

Midcoast California Coastal Trail – Pillar Point to Montara Beach

Update – 11/13/2013



Points to be Covered

- Review activity of the MCC Midcoast Parks committee (2012-2013)
- The area between Pillar Point Bluff and the Montara Lighthouse represent a large section of coastside to the west of Highway 1 needs a well defined trail.
- Recommendation: The committee's goals are best met by expanding the currently marked trail from Princeton to the Fitzgerald Marine Reserve with a two linked trails.
- Next Step: Request a meeting with San Mateo County Parks to discuss the proposed trail concept for this area

Key Committee Goal

The committee has a specific interest in identifying a walking trail that provides the closest access to the shoreline.

Beyond the effort to identify and document this trail segment, the committee believes it is important to publicize the route so that it gains public recognition and support.

After visiting the FMR tide pools, visitors walk the Dardenelle Trail and then look for Ocean Views and Access



FMR Tide Pools



View from Ocean Boulevard

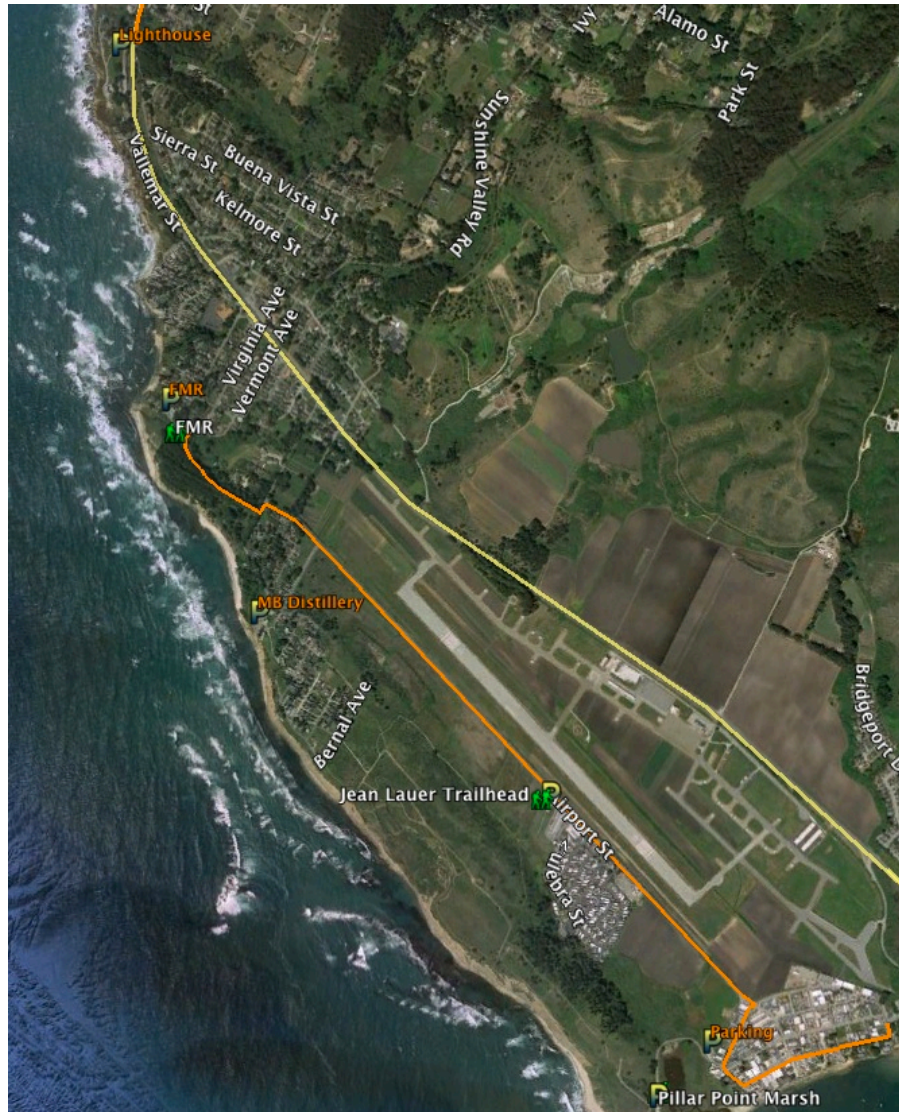


Pillar Point



Proposal
Discuss Trail Concept with SMC Parks

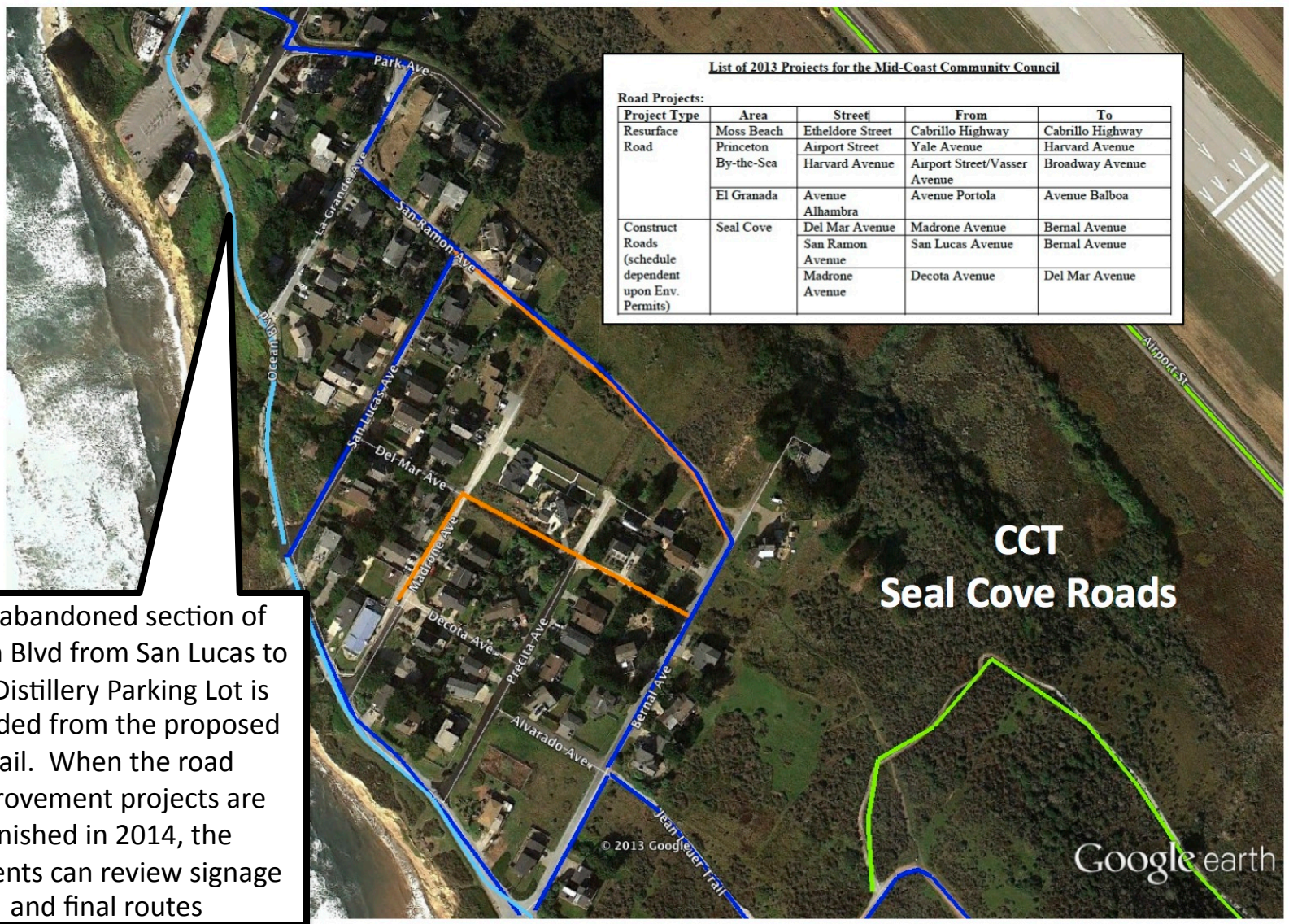
Current



Proposed Trail Concept



- Street Bicycle
- Connectors
- Walking



List of 2013 Projects for the Mid-Coast Community Council

Road Projects:

Project Type	Area	Street	From	To
Resurface Road	Moss Beach	Etheldore Street	Cabrillo Highway	Cabrillo Highway
	Princeton	Airport Street	Yale Avenue	Harvard Avenue
	By-the-Sea	Harvard Avenue	Airport Street/Vasser Avenue	Broadway Avenue
	El Granada	Avenue Alhambra	Avenue Portola	Avenue Balboa
Construct Roads (schedule dependent upon Env. Permits)	Seal Cove	Del Mar Avenue	Madrone Avenue	Bernal Avenue
		San Ramon Avenue	San Lucas Avenue	Bernal Avenue
		Madrone Avenue	Decota Avenue	Del Mar Avenue

The abandoned section of Ocean Blvd from San Lucas to the Distillery Parking Lot is excluded from the proposed trail. When the road improvement projects are finished in 2014, the residents can review signage and final routes

Clear signage is needed from the highway to parking, to parks and to the coastal trail



Clear signage for wayfaring need to be established as the key parts of initial trail definition as the trail will continue to see growing use.



Beyond the Lighthouse

- From the Montara Lighthouse to Beaches of Montara State Beach and Gray Whale Cove there is a need for four highway 1 safe crossings.
- The crossings are identified but beyond the scope of this report.