

# Midcoast Community Council

*An elected Advisory Council to the San Mateo County Board of Supervisors  
representing Montara, Moss Beach, El Granada, Princeton, and Miramar  
P.O. Box 248, Moss Beach, CA 94038-0248*

**Laura Stein**      **Lisa Ketcham**      **Bob Kline**      **Len Erickson**      **Dan Haggerty**      **Bill Kehoe**  
Chair              Vice-Chair              Secretary              Treasurer

Date: November 13, 2013

To: Parks Director Marlene Finley

Cc: Supervisor Don Horsley

Subject: **California Coastal Trail - Midcoast**

Welcome to San Mateo County and your new position as Director of the County's Parks and Recreation Department.

The Midcoast Community Council (MCC) has had a committee working with the County on establishing a signed California Coastal Trail through our Midcoast communities. There are many challenges to this, among them the gradual retreat of the coastal bluffs and the need for the trail to cross Highway 1 in Montara.

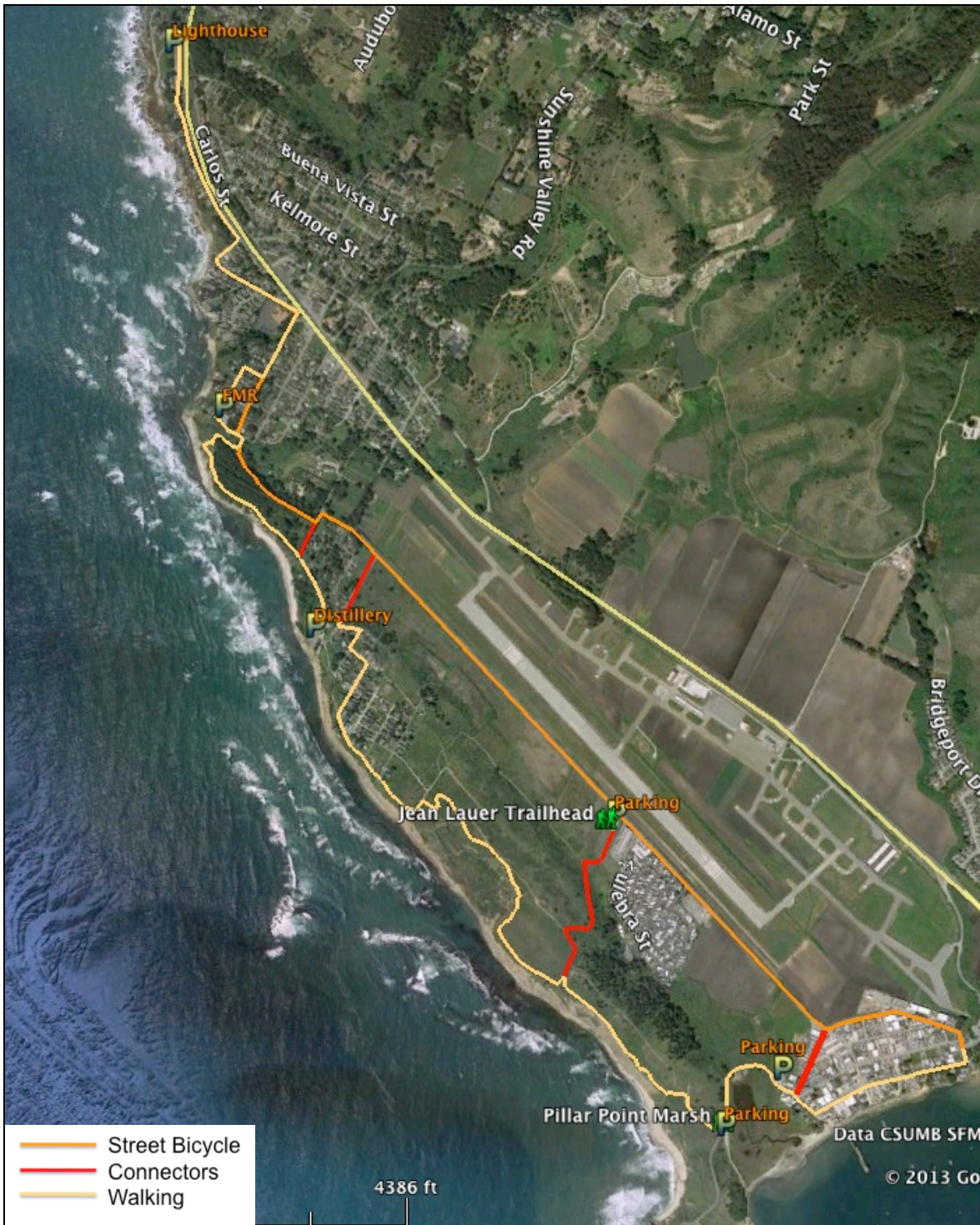
We believe that two signed coastal trails can be established between Pillar Point and the Montara Lighthouse, one primarily for bicycles along local streets and a second, a walkable coastline trail, along or near the bluffs on natural surfaces, but using local streets where necessary.

The maps on the following pages show the proposed and current trails. With the exception of the high bluff trail in the Fitzgerald Marine Reserve where bicycles are not allowed, this is not a recommendation for exclusive walking and exclusive bicycle use. It is an alignment that follows existing patterns of use for street bicycles and walkers.

We would appreciate the opportunity to discuss this approach with you and your staff when you have settled into your new job.

s/Laura Stein, Chair  
Midcoast Community Council

# Concept Plan: – Pillar Point – Montara Lighthouse



Current Signed Multi-Use Trail: – Pillar Point – Fitzgerald Marine Reserve

