



# Midcoast

## California Coastal Trail – Pillar Point to Montara Beach

Update – 5/8/2013

<div style="text-align: center;"> <h3>California Coastal Trail</h3> <h3>San Mateo County Midcoast</h3> <h3>Pillar Point to Mirada Surf</h3> <p>Trails Team – Midcoast Parks and Recreation Committee Final Report May 1, 2010</p> </div>  <div style="margin-top: 20px;"> <p><b>Table of Contents</b></p> <ul style="list-style-type: none"> <li>Introduction..... 2</li> <li>The Project: Pillar Point to Mirada Surf..... 3               <ul style="list-style-type: none"> <li>Pillar Point to Denniston Creek..... 4</li> <li>Denniston Creek to Boat Launch Ramp..... 8</li> <li>Boat Launch Ramp to Mirada Surf..... 11</li> </ul> </li> <li>Appendix..... 12</li> </ul> </div>	<div style="text-align: center;"> <h3>California Coastal Trail</h3> <h3>San Mateo County Midcoast</h3> <h3>Pillar Point to Montara Beach</h3> <p>CCT Committee – Midcoast Community Council <b>Draft Report – Not for Distribution</b> April 30, 2013</p> </div>  <p style="text-align: center; font-size: small;">The PP-FMR Walkable Coastline Trail (to be edited in)</p> <div style="margin-top: 20px;"> <p><b>Table of Contents</b></p> <ul style="list-style-type: none"> <li>Introduction..... 2</li> <li>Overview..... 3               <ul style="list-style-type: none"> <li>Pillar Point to Fitzgerald Marine Reserve – The Midcoast Walkable Coastline Trail..... 4</li> <li>Moss Beach – Fitzgerald Marine Reserve to Lighthouse..... 9</li> <li>Montara – Main Street to the State Beach..... 11</li> <li>Montara State Beach..... 12</li> <li>Highway 1 – Crossings and Roadside Safety..... 12</li> </ul> </li> <li>Appendix A – Local Coastal Program and the CCT..... 14</li> <li>Appendix B – CCT – Midcoast Community Council – 2001..... 15</li> </ul> </div>
--	---

## Primary Content for Each Section

- Route
- Issues – Joint focus
- Issues – Divided focus
- Parking
- Signage
- Vertical Coastal Access
- Jurisdiction / Responsibility



# Midcoast CCT and other CCT Segments

CCT – old Highway 1 roadbed converted to linear park

CCT through agency lands to tunnel south portal

CCT from north portal into beaches and Points of Pacifica

CCT along HMB with extension to FMR

**MCC CCT Committee:**  
Covering the bluffs, coves and beaches of the Midcoast

## Midcoast LCP and CCT Objectives

- (a) Provide a continuous walking and hiking trail as close to the ocean as possible
- (b) Provide maximum access for a variety of non-motorized uses by utilizing alternative trail segments where feasible
- (c) Maximize connections to existing and proposed local trail systems
- (d) Ensure that the trail has connections to trailheads, parking areas, interpretive kiosks, inland trail segments, etc., at reasonable intervals
- (e) Maximize ocean views and scenic coastal vistas

## Issues affecting CCT definition in the Midcoast

- The trail objectives and the nature of the Midcoast must deal with continuing change of the coast profile:
  - Eroding Coastline
  - Graceful Retreat
  - Fixed Property Lines
  - Rolling Easements

## Conflicitng Views: Where to put the trail

- As far from the eroding coast as possible
- Near the bluff edge for best views

## Conflicting Views: What type of trail

- Heavily improved, multi-use
- As natural as possible



# MCC CCT Reset – Primary Community Focus

Highway 1 Crossing and  
Roadside Trails

Montara State Beach

West Moss Beach and  
Vallemar Bluffs

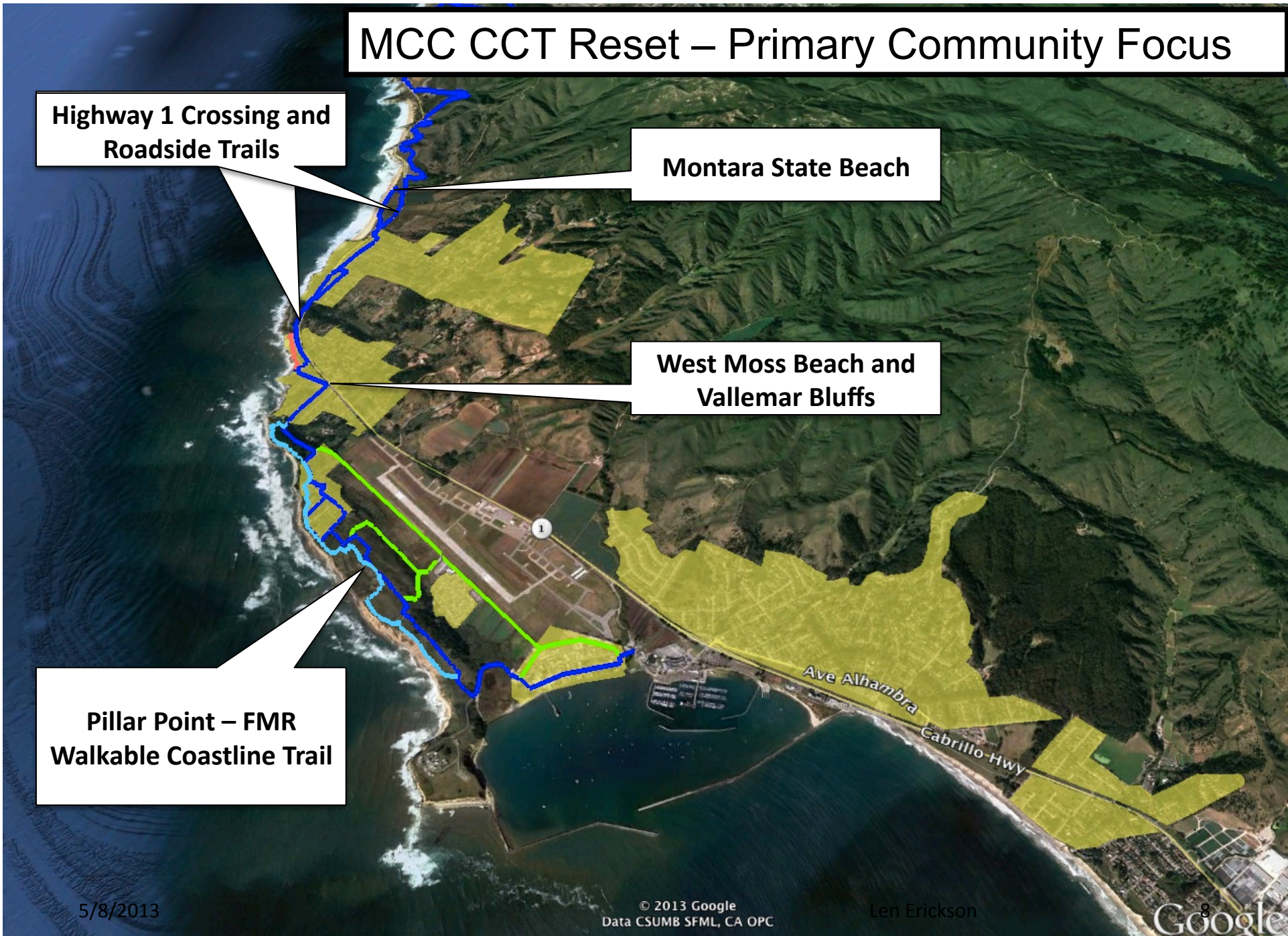
Pillar Point – FMR  
Walkable Coastline Trail

5/8/2013

© 2013 Google  
Data CSUMB SFML, CA OPC

Len Erickson

Google





## SMC Parks – Change of Management

- Prior to change – presentation of the Midcoast CCT was the joint responsibility of
  - Assistant Director of Planning
  - Director of DPW and Parks
- Going forward
  - Temporary Parks Director (next four months)
  - Permanent Parks Director

## MCC CCT Committee

- Focus – Pillar Point to Fitzgerald Marine Reserve
  - The Walkable Coastline Trail
  - The California Coastal Trail
- Timing for Bringing to the MCC
  - Establish a framework with SMC Parks
  - Four to six months for MCC readiness

# Midcoast

The Walkable Coastline Trail - California Coastal Trail  
(2 Minute Slide Show)\_





## Remaining Three Areas – MCC Approach

- West Moss Beach / Vallemar Bluffs
  - Report by MCC members
- Highway 1 Crossing and Roadside Trail Issues
  - Request action from Caltrans
  - Request higher priority for Highway 1 Crossing
  - Related Agencies (SMC DPW, CA State Parks, GGNRA)
- Montara State Beach
  - Report by MCC Members together with State Parks

## Other Related CCT Topics

- Comprehensive CCT Coastal Access Document
  - MCC member
- Midcoast Parking Study
  - Led by GGNRA – Next report in Summer
- Midcoast CCT South
  - Three projects – periodic reports form SMC Parks
- Transit Shuttle Opportunities
  - ?? Assess near term opportunities from Pacifica test
- Trails North of Montara State Beach
  - SMC Parks Responsibility – MCC Website links