

Dave Holland – Update to MCC

Presentation to MCC – August 25, 2010

Areas

- FMR – Dardenelle Trail/Reef Access
- Highway 1 – Tunnel Update
- Highway 1 – Traffic and Trails I & II
- Highway 1 – Hwy 1 Citizen's Team
- CA Coastal Trail Planning - MPRC
- Midcoast Action Plan - MPRC

Fitzgerald Marine Reserve Trail Improvement Projects

Fitzgerald Marine Reserve Views



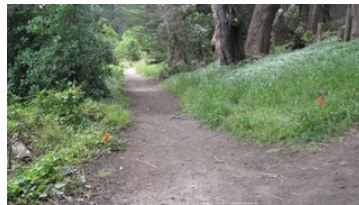
Beach Access – Improvement Project
Upgrade with new route and added view site

The Fitzgerald Marine Reserve has two projects in the current Neg Dec represents two different trail styles:

1. The beach access project upgrades a path that is integral to the FMR tide pool experience
2. The Dardenelle trail project integrates what were identified in the Master Plan as two separate trail types, a walk in the trees and the multi-use / all year segment of the California Coastal Trail.



Bluff Trail – No Change



Dardenelle Trail – Improvement Project
Upgrade to Multi-use California Trail Segment

Beach Access Improvement Project

- Considerations
 - **Multiuse – Meeting Diverse Demands**
 - Foot
 - Seal Rescue and other vehicles
 - Handicapped (Walking / Wheelchair)
 - Individuals – School Groups
- Trail Dimensions
 - Current Planned
 - Width – 14.5 feet (10.5 feet paved + 2 foot shoulders)
 - Surface - Impervious Asphalt
 - Alternate surface under review by County Parks
 - <http://www.invisiblestructures.com/gravelpave2.html#>
 - Permeable – GravelPave2
 - Width – 8 feet + shoulders (few inches)
 - Update expected in August 25

New Route: Takes an extra turn reduces Grade and provides a second view area.



Dardenelle Trail Improvement Project

- Considerations
 - FMR - Connecting Trail to New Beach access stairs
 - Community - Only north/south bicycle trail option west of CA 1
 - CCT – Provides multi-use strand – second strand is the high bluff foot path of FMR
 - **Multiuse – Meeting Diverse Demands**
 - Foot
 - Bicycle
 - Handicapped (Walking / Wheelchair)
 - Individuals – School Groups
- Trail Dimensions
 - Current Planned
 - Width – 14 feet (10 feet paved + 2 foot shoulders)
 - Surface - Impervious Asphalt
 - Alternate surface is being reviewed by County Parks
 - <http://www.invisiblestructures.com/gravelpave2.html#>
 - Permeable – GravelPave2
 - Width – 8 feet + shoulders (few inches)
 - Update expected in August 25

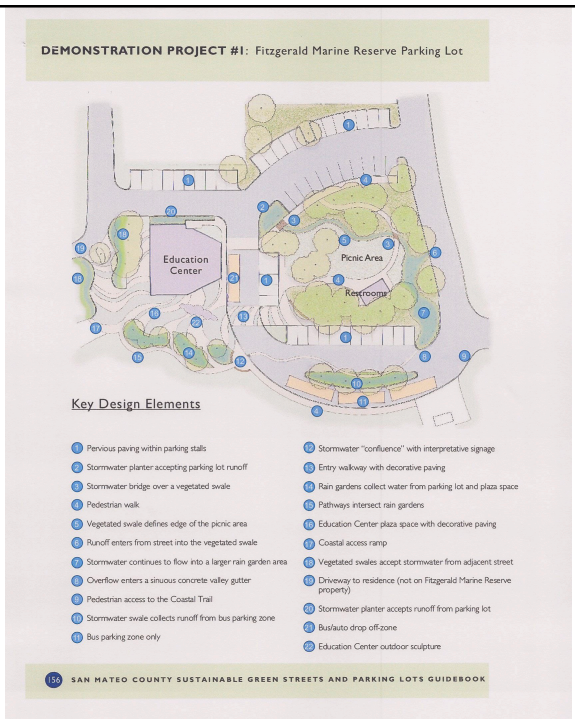
Dardenelle Trail Into the Trees



Dardenelle Trail
Straight Segment under Cypress
Marking flags show 10 foot paved portion of trail
Shoulders would be two feet additional on either side.



Fitzgerald Marine Reserve 2010
MCC endorsed Education Center and Parking Lot demonstration project emphasizing pervious surfaces



2011 – 2012
Devil's Slide Highway 1 replaced by Tunnel
Old Highway 1 Bypass Opens as Park
-- Midcoast Planning for the Future --

All the agencies have been working together with Caltrans to address traffic impacts, including bus stops, parking areas, increased trail access, restrooms and drinking fountain infrastructure, etc. But in reality, there will be increased traffic no matter what any agency does. You build it and they will come. This is the negative side effect of having a coastal road with beautiful views redesignated as a trail.

– Chris Powell
El Granada Resident / GGNRA / NPS

Assessment of Likely Use and Impacts from
Proposed Devil's Slide Trail



Devil's Slide Photo by Patrick Tierney

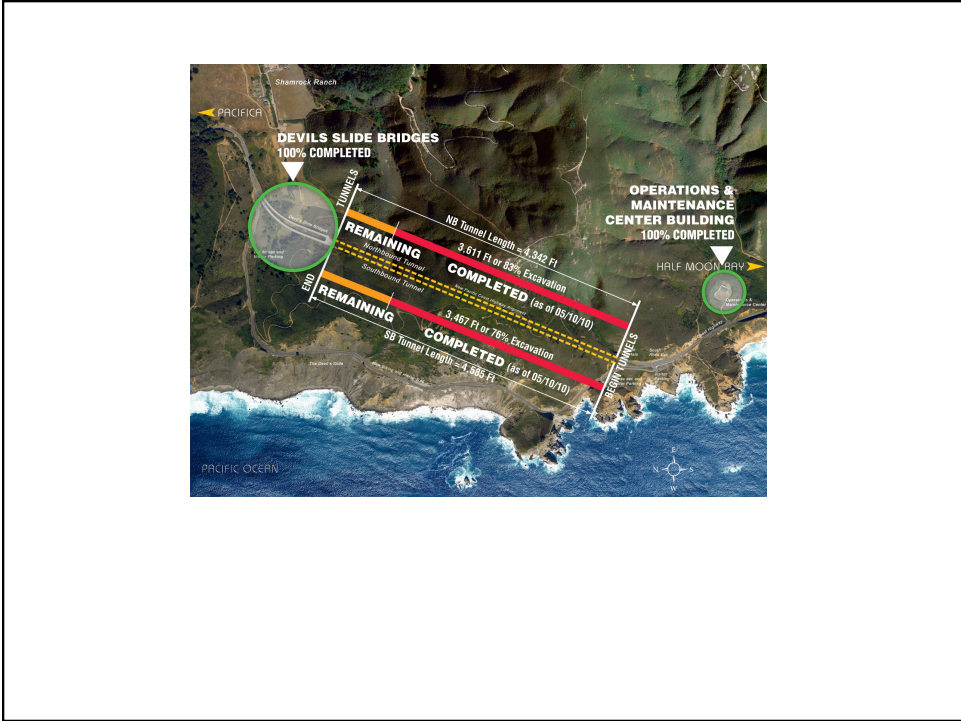
Prepared For: Tim Duff
California Coastal Conservancy

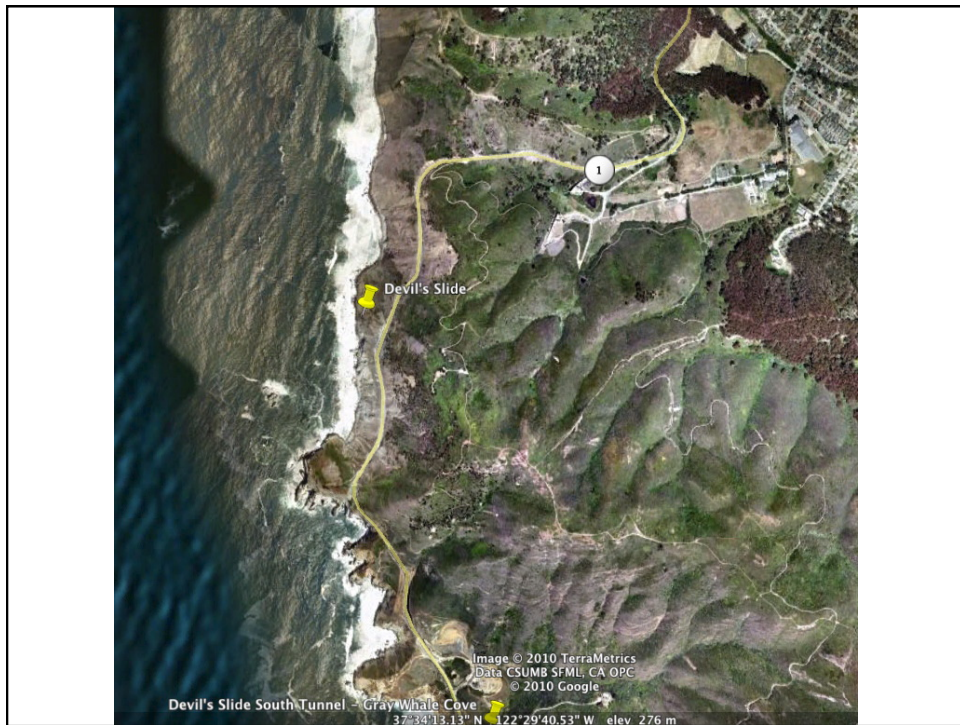
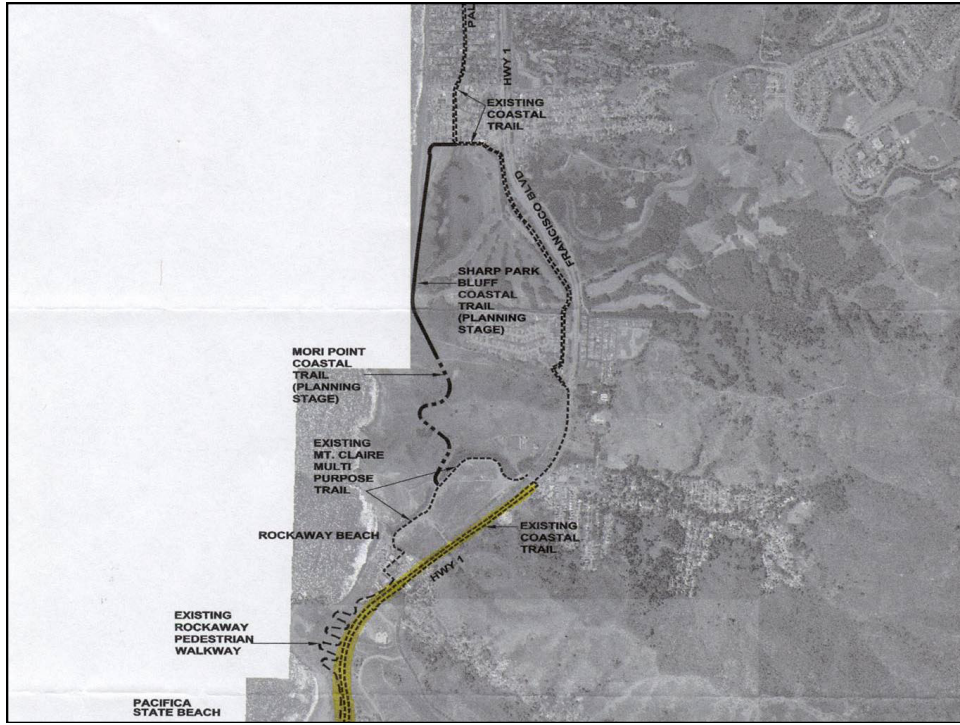
Prepared By: Patrick Tierney Ph.D.
Department of Recreation and Leisure Studies
San Francisco State University
ptierney@sfsu.edu

December 16, 2005

Devil's Slide Trail Site









Highway 1 Improvements

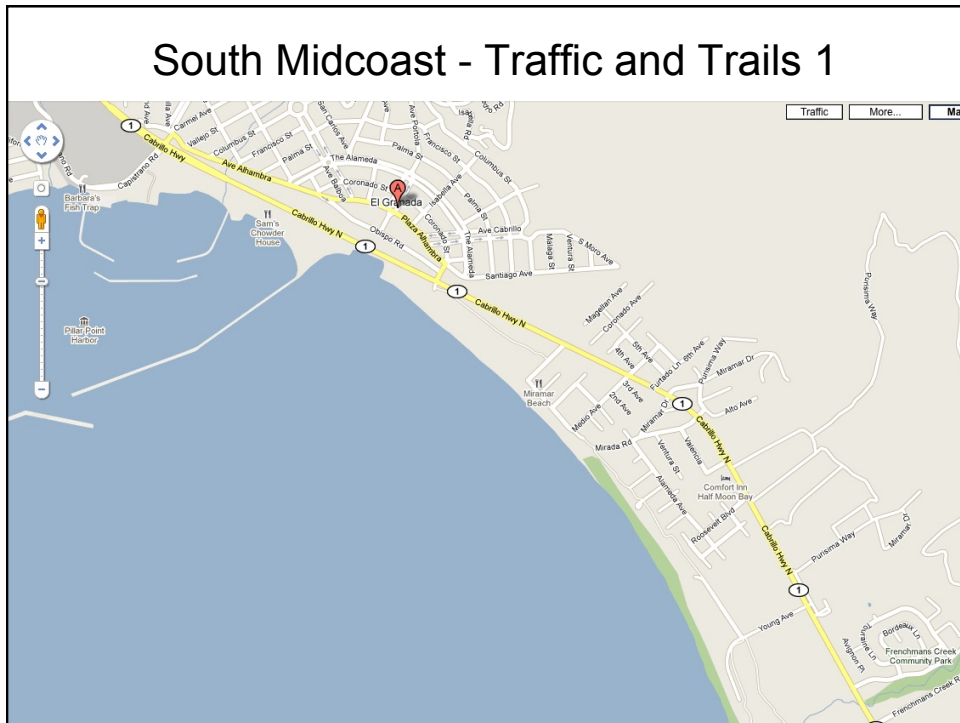
In 2009 two Midcoast efforts, featuring intense involvement by local citizens, were initiated to focus on highway and trail improvements.

One was initiated by a Caltrans funded planning session, "Traffic and Trails", which was held in June of 2009. The focus of the sessions was improving Highway 1 conditions for the southern portion of the unincorporated Midcoast (Frenchman's Creek to the north Capistrano – Highway 1 intersection). Background details are available at the [MPRC web site](#). The final report from that effort, the [Highway 1 Safety and Mobility Study](#) was adopted by the San Mateo County Board of Supervisors on May 25, 2010. There are two immediate follow up citizen involvement efforts that have been initiated following that approval:

1. One is the creation of a Highway 1 Citizen's Committee. Background and application information on this committee is available at the [MPRC web site](#).
2. The other is submission of an application for a second Caltrans funded study to examine the northern portion of Highway 1, from the airport to Devil's Slide and the new tunnel. The initial feedback on the application is positive, and if awarded the process would begin in the first half of 2011.

Key Objectives

1. Highway 1 Safe Crossings and Safe Driving
2. Multi-modal trail parallel to Highway 1
3. Adequate Plan for Parking on Peak Weekend Days

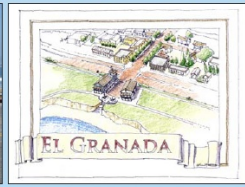


Highway 1 – Traffic and Trails



Highway 1 Safety and Mobility Improvement Study

San Mateo County Midcoast Communities: Princeton, El Granada and Miramar, CA

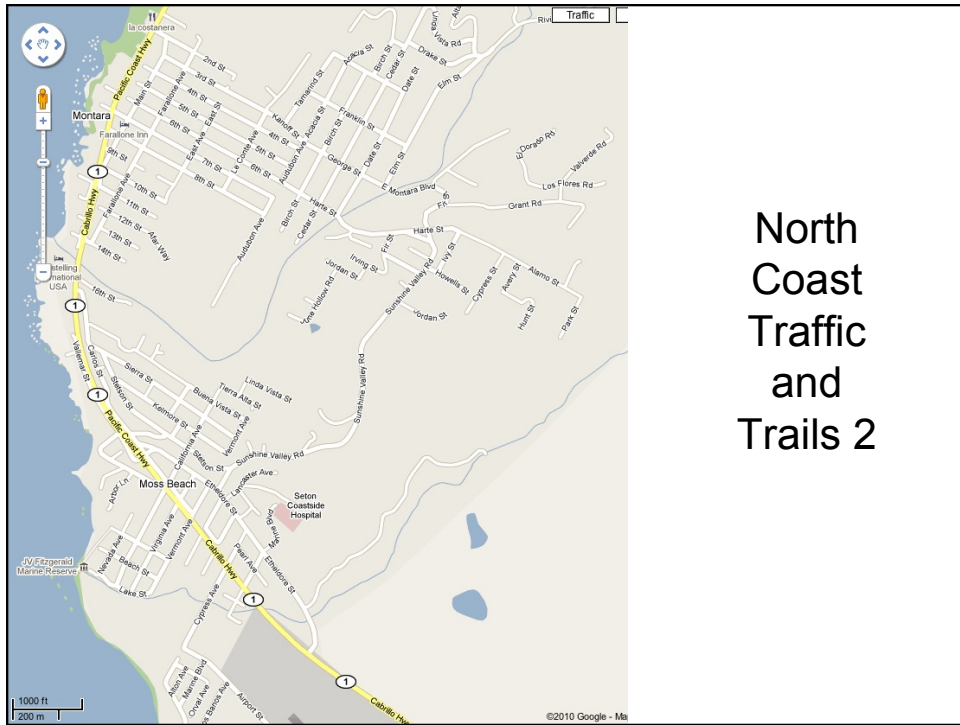


April 2010

Prepared By
Local Government Commission
Glatting Jackson/Walkable Communities
Opticos Design, Inc.

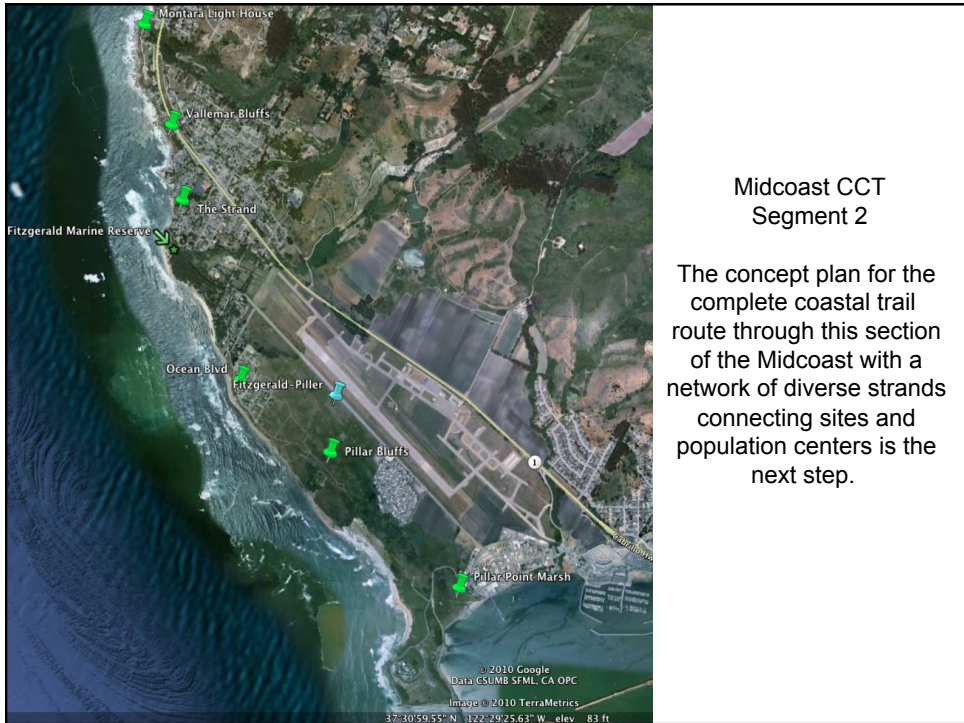
Citizens Implementation Team

The Citizens Planning Team will assist the County in developing implementable actions based on the report. This team will be composed of 8-10 local citizens representing a variety of interests and backgrounds.



North Coast Traffic and Trails 2







Midcoast Action Plan

**Parks, Toilets and Playfields
Trails**

Projects

- Moss Beach Park – Toilet, Improvements
- Quarry Park – Play Structures
- Elementary School Playfields

Midcoast Action Plan - Near Term Actions

- El Granada School field improvement - \$120,000
- Farallone View School field improvement - \$120,000
- Quarry Park Vault Toilet \$30,000
- Moss Beach Park flush Toilet - \$65,000
- Pillar Point Vault Toilet - \$30,000
- Mirada Surf West flush Toilet \$ 80,000

Midcoast CCT Segment 1 – Key Improvements



- | | | | | |
|--|--|---|--|--|
| 1 - Pillar Point <ul style="list-style-type: none">•Parking Upgrade•Toilet Upgrade | 2 – Princeton Ave <ul style="list-style-type: none">•Trail Marking•Beach Access•DPW Integration | 3 – Surfers Beach <ul style="list-style-type: none">•Parking Improvement•Toilet | 4 – Mirada-Surfers <ul style="list-style-type: none">•Trail Improvement•Beach Access | 5 – Surfers-Mirada <ul style="list-style-type: none">•Toilet•Beach Access•Mirada Road Improvement |
|--|--|---|--|--|