

MCC Committee
Midcoast California Coastal Trail
Update
Pillar Point – South Portal Segments

Len Erickson

Committee Meeting: August 28, 2012

Overview

This document presents information from the June 7 meeting and summer activities to provide input for creating a Concept Plan for Midcoast California Coastal Trail from Pillar Point to the Tunnel South Portal.

During the summer the committee walked key sections of the trail, discussed the findings from that walk and discussed breaking down the trail into separate segments. Len Erickson (committee chair) and Sam Herzberg (San Mateo County Parks) reviewed specifics of documenting the trail for public review and adoption by the Board of Supervisors.

Midcoast CCT Segments

The CCT is divided into a set of segments which are documented in the following slides with maps taken from Google Earth. Each segment has a reference name. Current and proposed trails are taken primarily from the Highway 1 Safety and Mobility Study draft document. Only the coastal trail strands are the direct concern of the committee's efforts going forward, except where specifically noted. The legend for the slides is provided in the next slide.

Comments need to be made on the following points if they apply to the segment:

- Trail Strands
- Signage
- Property rights
- Coastal access
- Walkways (for areas where there is no trail separate from the road)
- Highway 1 Crossing
- Parking

Legend – Trails and Segments

Legend

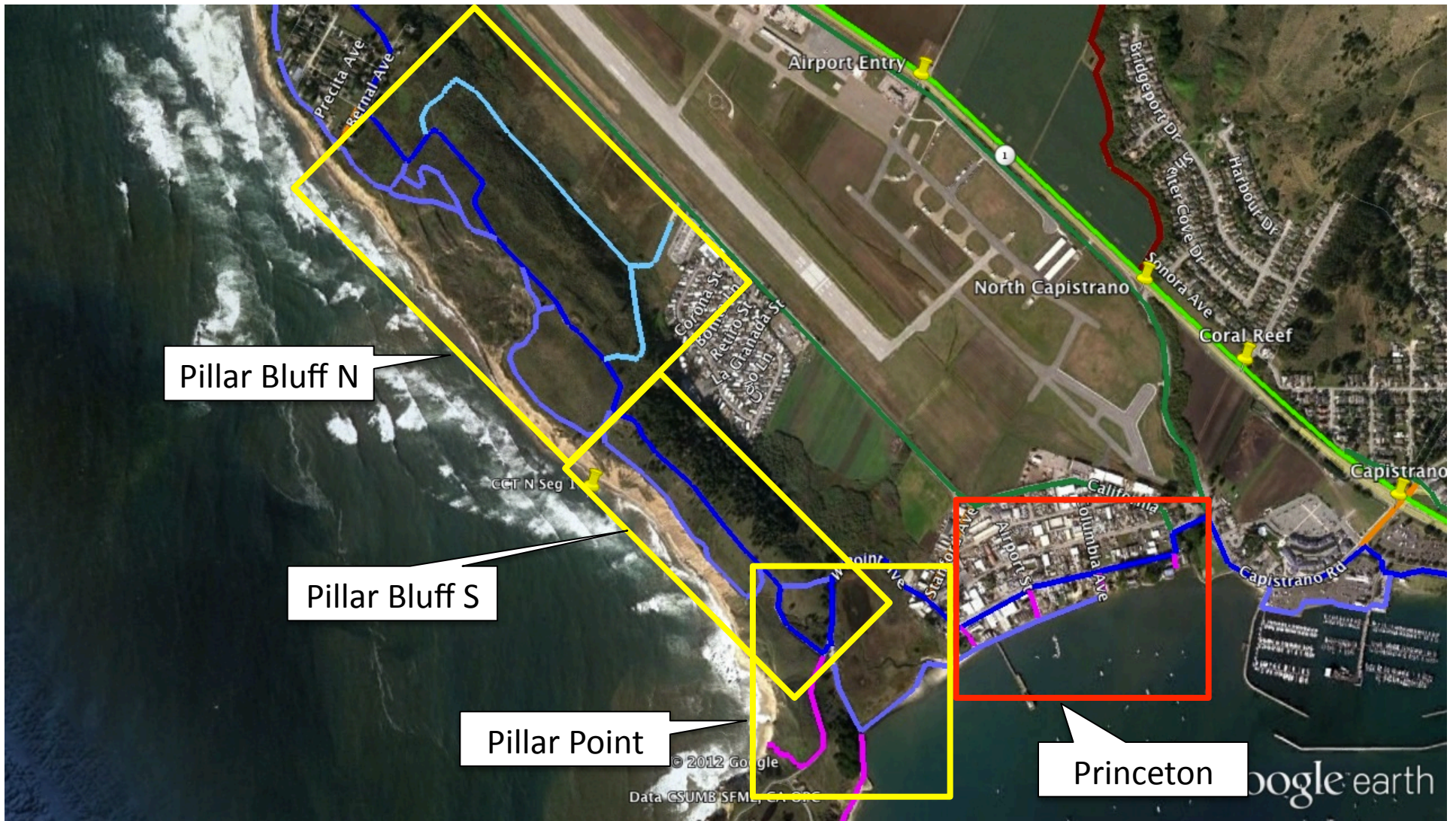
-  • California Coastal Trail
-  • Coastal Trails (Coastal Edge)
-  • Coastal Trail Access
-  • Beach Access
-  • Bike Lanes
-  • Connectors
-  • Parallel Trail
-  • Parallel Trail Connections / Alternates
-  • Mountain Trail Connections
-  • Mountain Trails

Segments

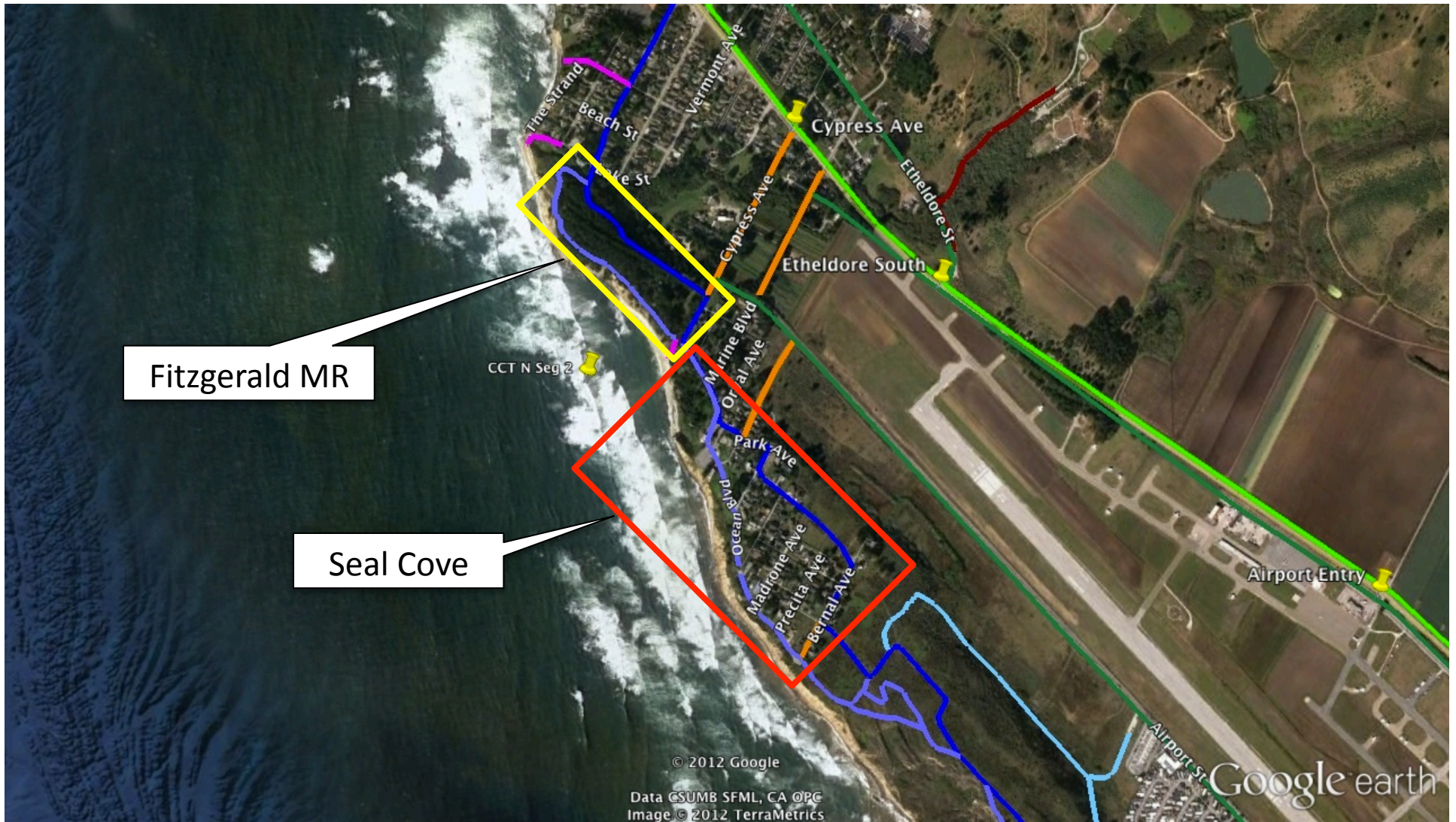
Trail in an area
that has
significant
housing

Trail in an
area that is
largely
park or
open space

Princeton | Pillar Point | Pillar Bluff S | Pillar Bluff N



Seal Cove | Fitzgerald Marine Reserve



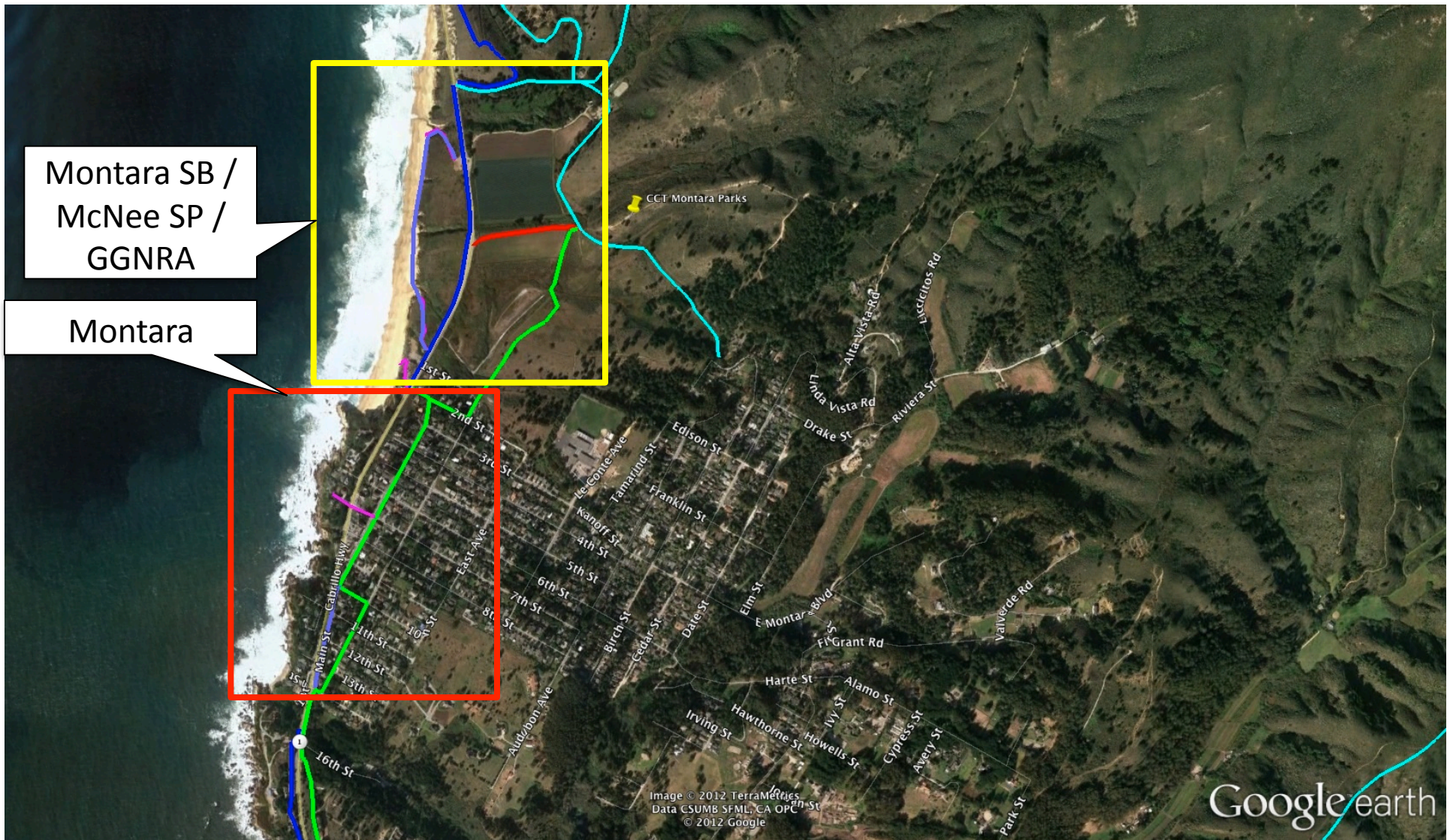
Fitzgerald MR

Seal Cove

Moss Beach W | Vallemar



Montara

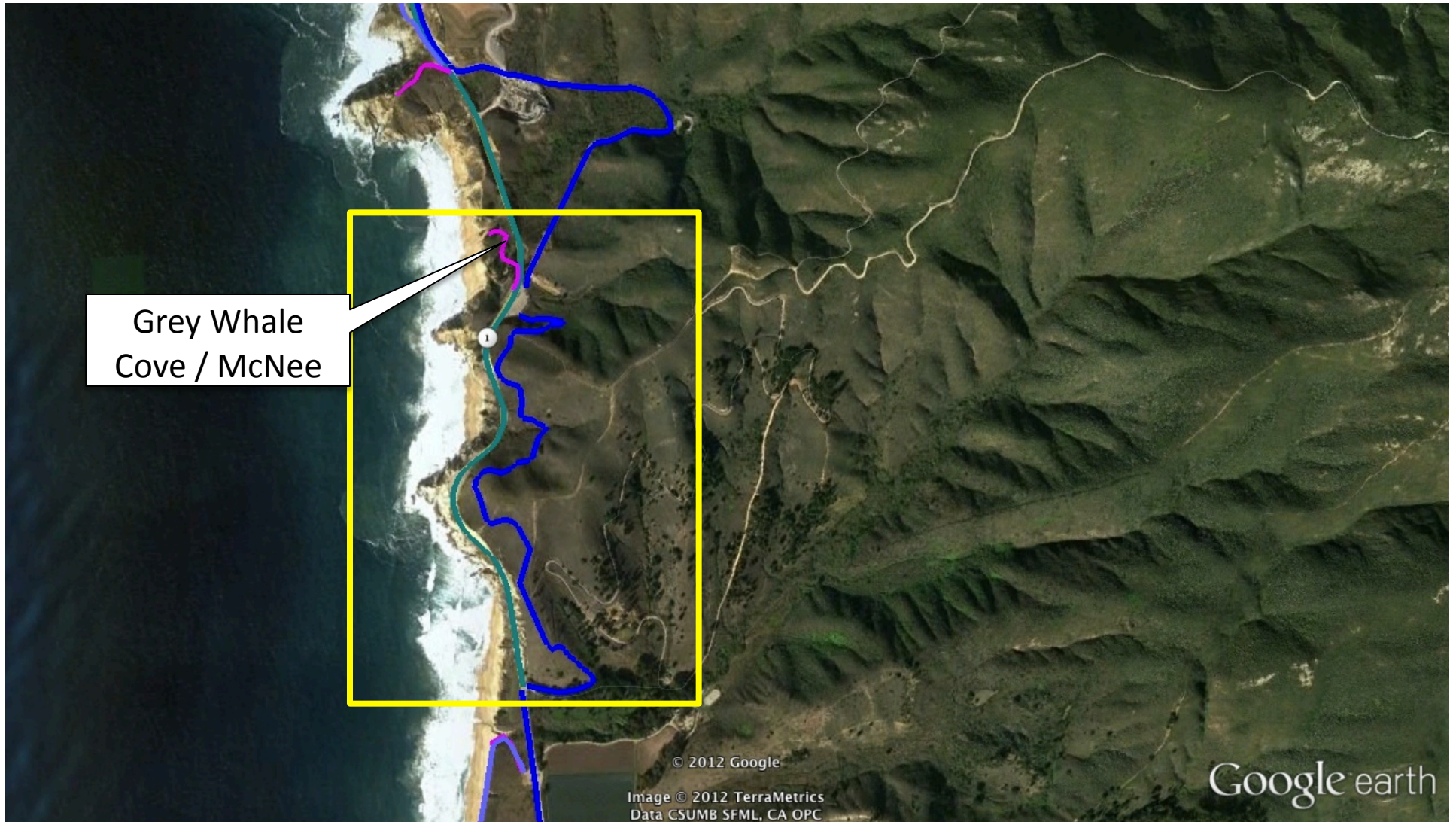


North of Montara State Beach

The trail segments north of Montara State Beach are all part of park land or planned park land property. The planning and coordination for this area has been managed by the participants in the Devil's Slide Task Force. Their goal is to have a continuous trail from Grey Whale Cove parking area to Pacifica available in 2014.

The MCC Coastal Trail Committee will publish summary plans for this effort but it is not an area where the committee plans to make recommendations.

McNee / Grey Whale Cove



Green Valley | Linear Park



North Portal | Pacifica



Walkable Strands of the Trail

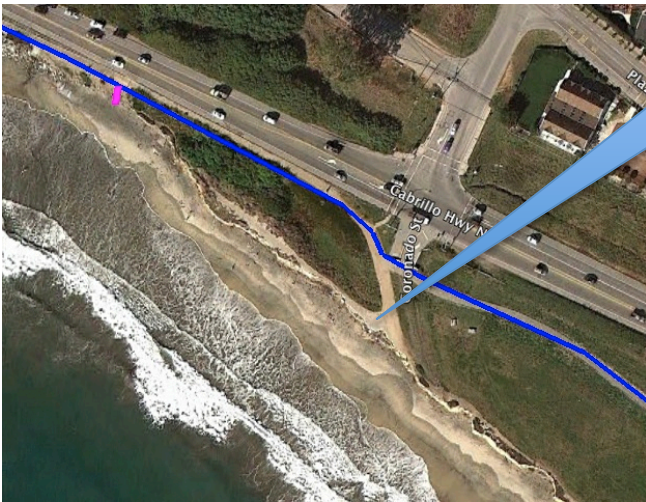
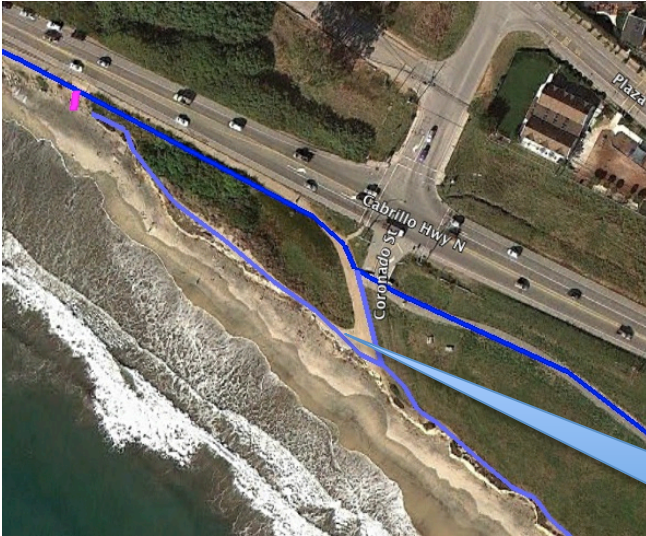
In considering the documentation of Midcoast California Coastal Trail, those present at the June 7, 2012, meeting of the committee, expressed the following concerning the coastal trail:

While recognizing the multiple strands that can comprise the trail, the committee wants to identify a walking trail that provides closest access to the shoreline. Beyond the effort to identify and document these trail strands, the committee feels it is important to publicize the route so that it gains public recognition and support.

For reference in Half Moon Bay there is a large no slope, paved surface for walking and bicycles. There is a formal parallel equestrian trail. For much of the route, small informal, walking segments closer to the coast than the formal paved trail have been created through use.



Examples: Walkable Strands in Addition to Multiuse



Created by
use



Created by
design

Signage

The pictures on the next slide depict current identification markers for the Coastal trail and the concept of using interpretive signs to indentify trail strands in certain areas.

Maps on Interpretive Signs & Path Markers



When is this



an effective alternative to




Path Markers



Property Issues

The following slides identify areas where there are property / ownership questions that impact the trail route.

Ownership / Access Issues

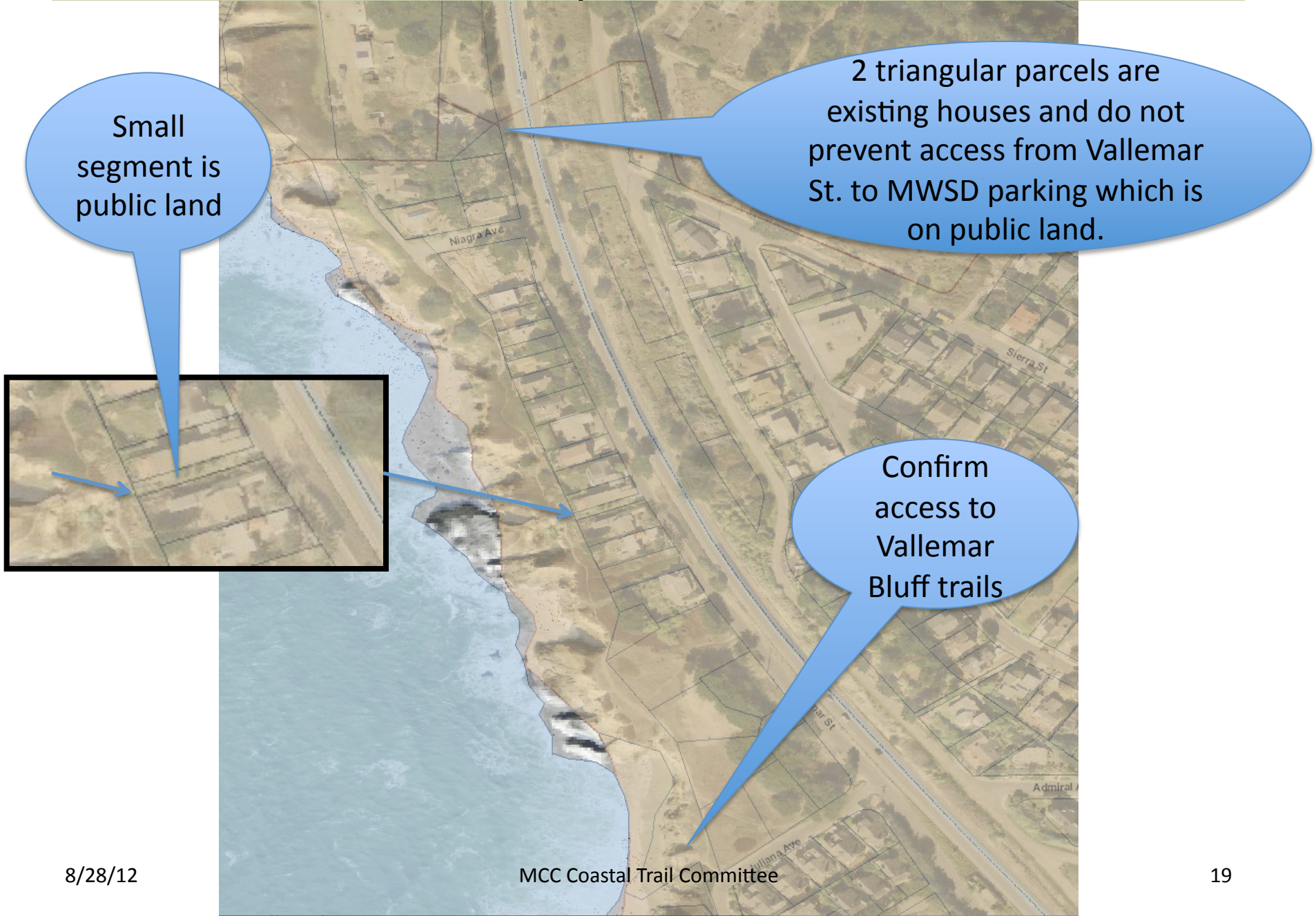


Ellendale/Strand – Public view access and access to unimproved trail to Sunshine Valley & beach

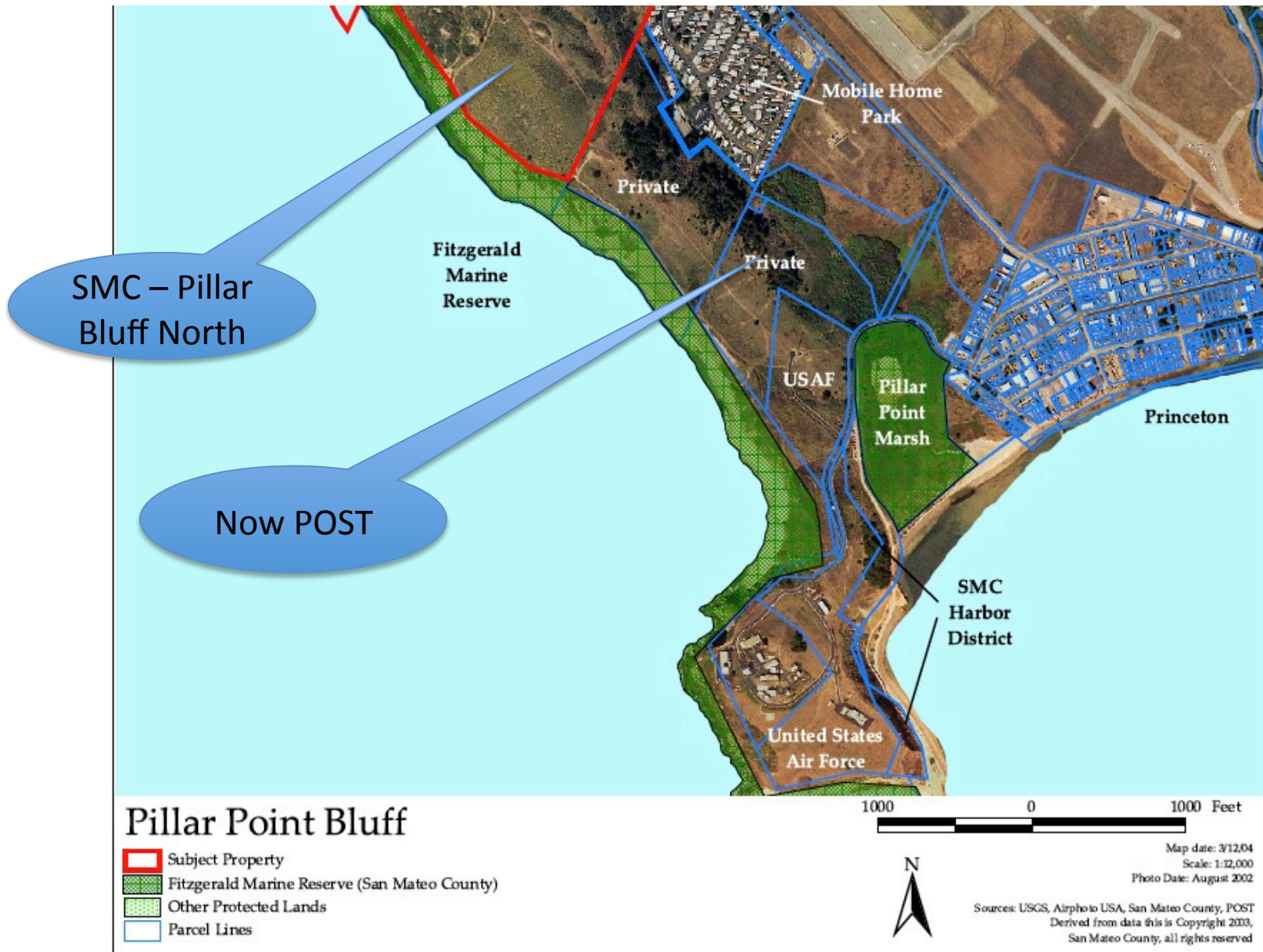
8/28/12

MCC Coastal Trail Committee

Ownership / Access Issues



Pillar Point / Pillar Bluff S



Access

Access to the coast is provided in communities as well as planned access in park lands.

ACCESS IN COMMUNITIES

Princeton

- Broadway (view only)
- Columbia
- Vassar
- West Point

Moss Beach West

- Ellendale (view / access trail opportunity)
- Valleamar Bluff (view / access trail opportunity Wienke Cove)

Montara

- 7th Street (view only)

ACCESS IN PARK LANDS

Pillar Bluff

Fitzgerald Marine Reserve

Grey Whale Cove

Walkways Trails, Sidewalks, etc.

Highway 1 Crossings

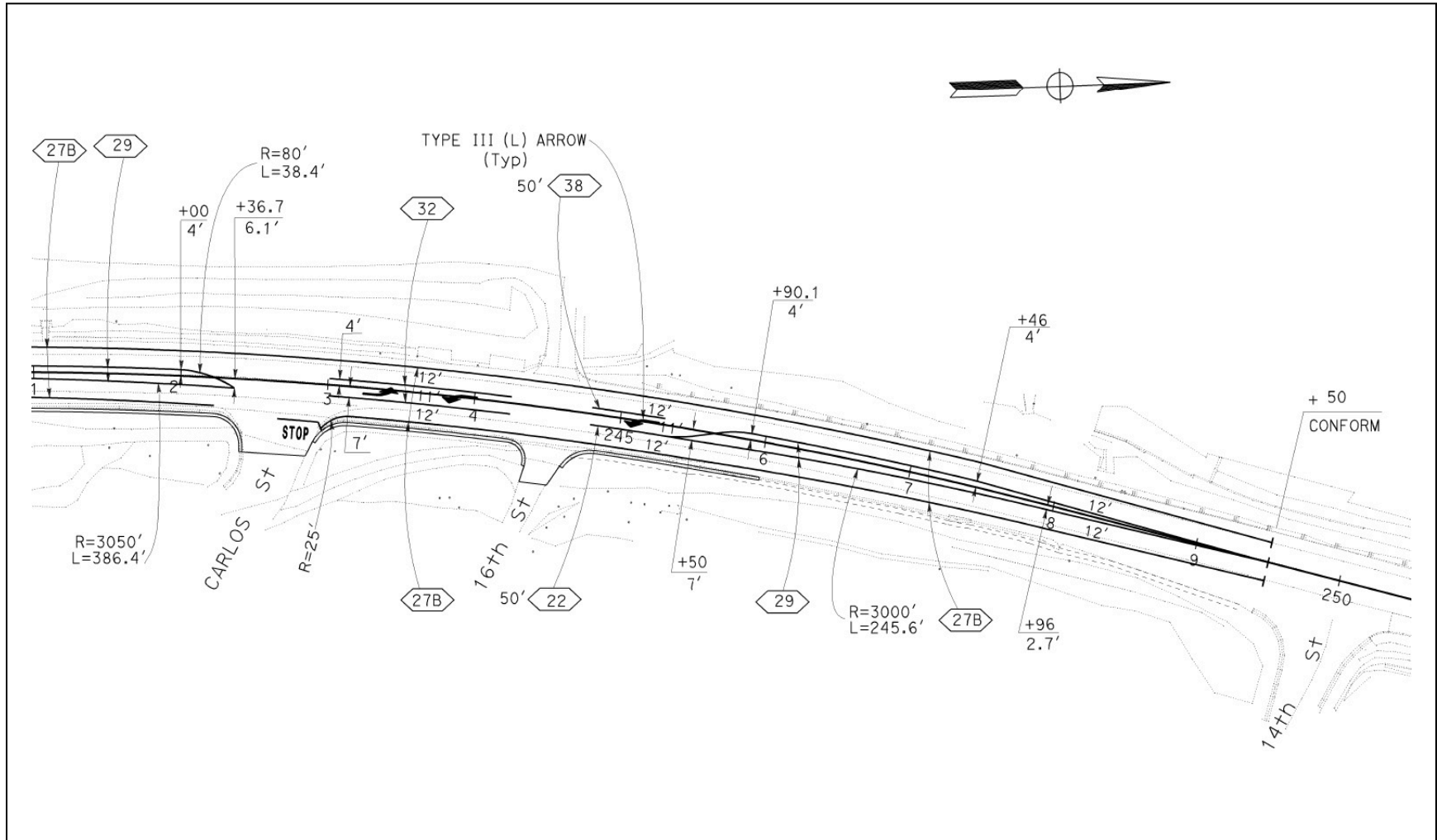
Two crossings are required at Montara State Beach

Crossing near the Montara Lighthouse has special consideration covered in the next slides

Overview of Area



Proposed Turns



Proposed treatment of area in
the Highway 1 Safety and
Mobility Study Phase 2
(Page 50)



Parking and the Coastal Trail

Parking near the coastal trail is a concern since the parking allows visitors the opportunity to leave their cars and walk. There are many small formal or informal parking opportunities. Two areas present special issues.

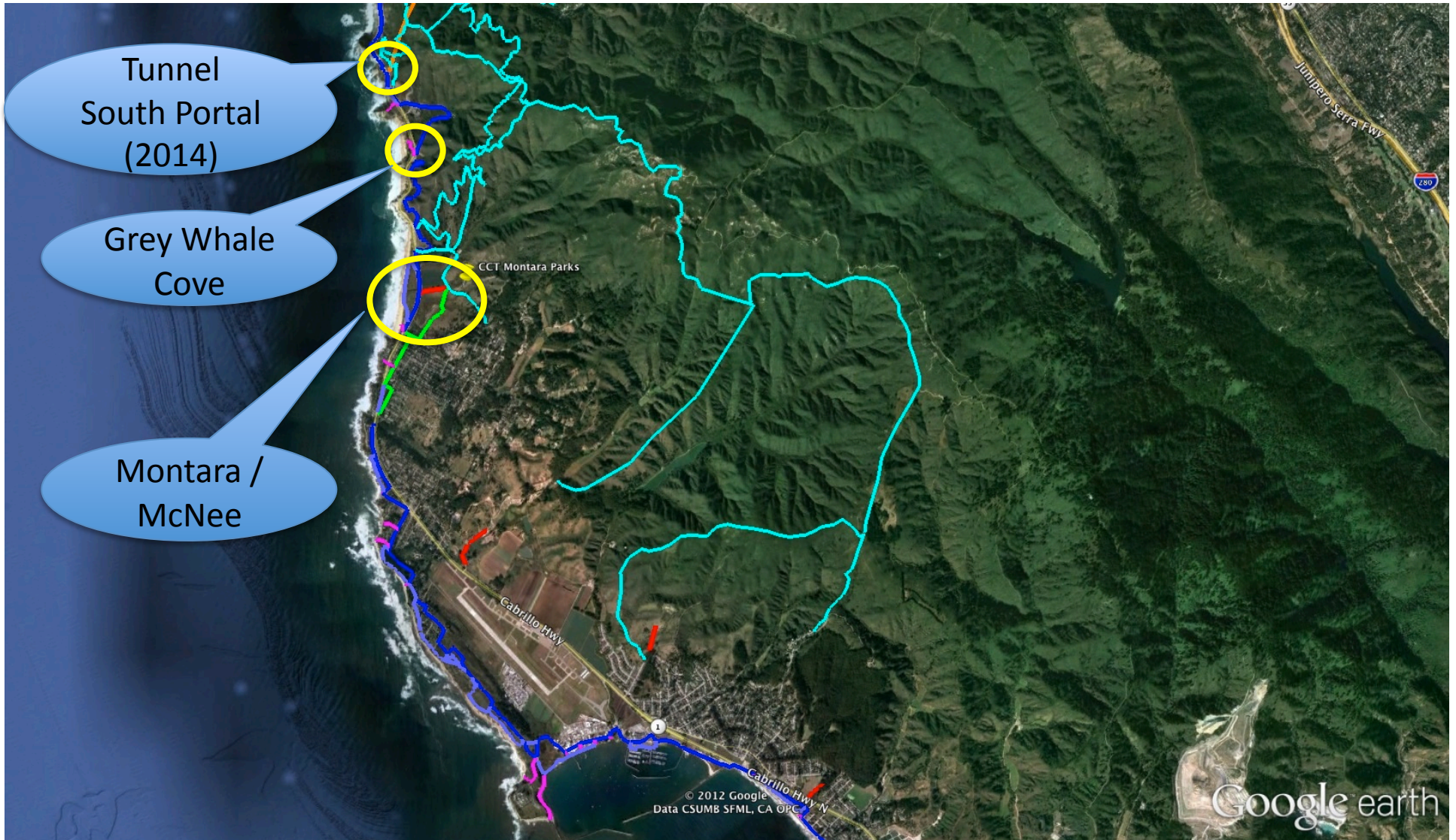
The area north of Montara has the Midcoast California Coastal Trail and visitor parking and Highway 1 in close proximity. Sites and analysis (current and proposed from the Highway 1 Safety and Mobility Study) are on the following pages.

The Coastal Trail plan should consider whether this combination of parking sites is the best solution to meet the access needs of users of the California Coastal Trail, Mountain trails and parks and Montara State Beach.

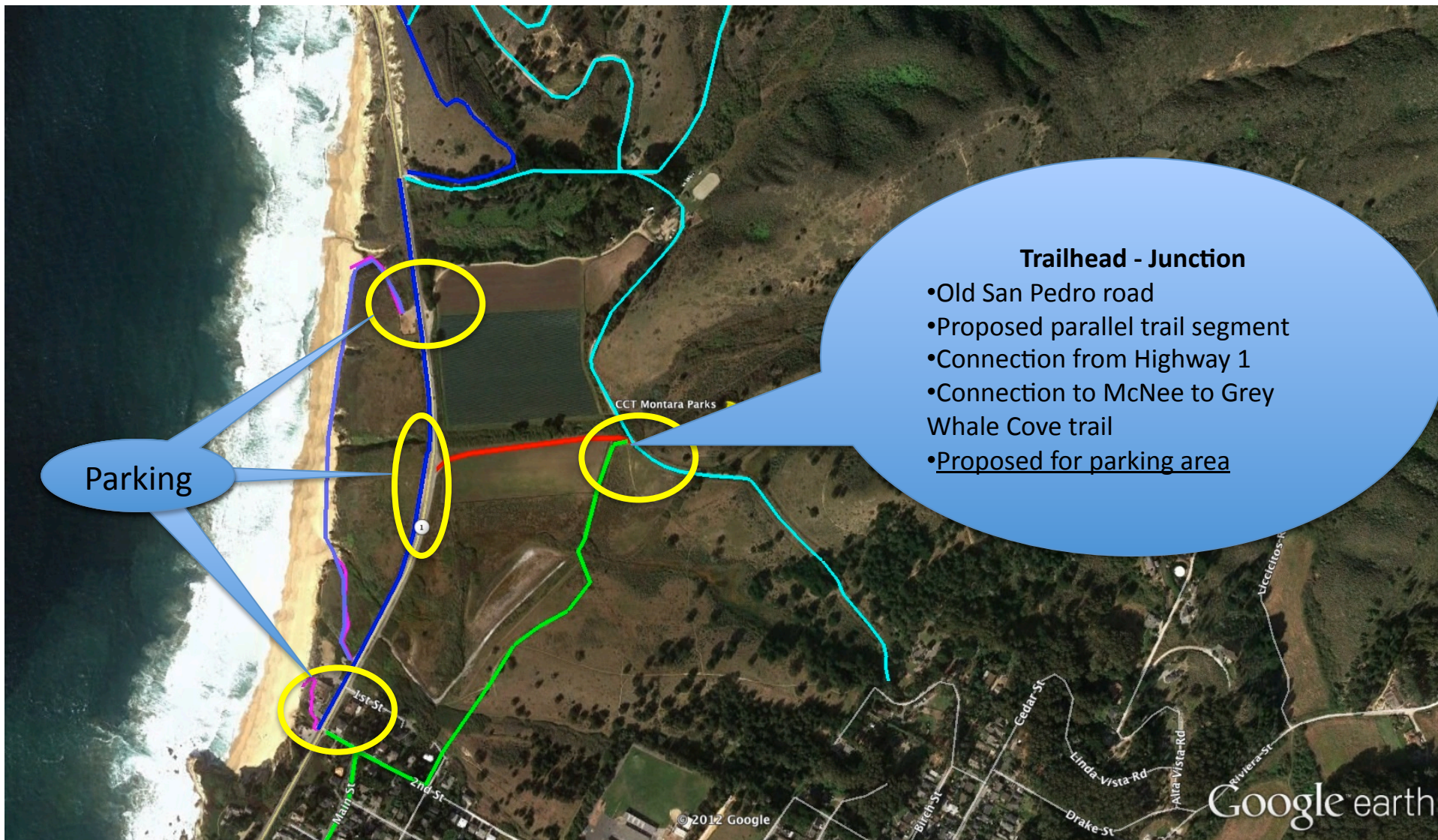
PROPOSED CONSIDERATION

Since multiple agencies (and private businesses) are involved in managing these parking sites, conducting a coordinated review of plans is in the best interest of all parties.

Parking North of Montara



Montara State Beach / McNee State Park / GGNRA

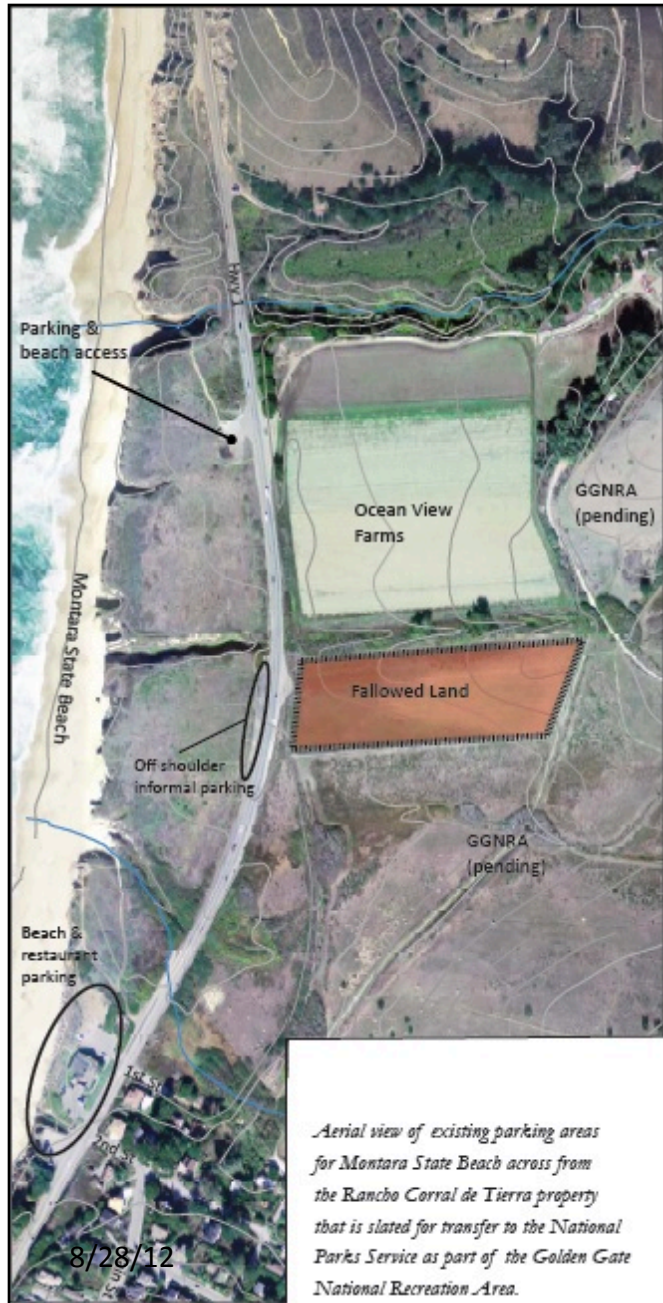


Parking Design - Highway 1 Safety & Mobility Study

Focus Area Design Proposals



Parking Options – Highway 1 Safety & Mobility Study



Focus Area Design Proposals

Existing Parking Supply: Montara Beach

Beach Parking	Spaces	Status
Montara State Beach - North Lot	37	Unpaved
Montara State Beach - South Lot	22	Paved
Restaurant North Lot	27	Paved (publicly available until 5:00 PM)
Restaurant South Lot	18	Paved (publicly available until 5:00 PM)
Subtotal: Legal Spaces	104	
Informal Parking ¹	59	Unpaved shoulder west side of highway
Total Spaces	163	

¹Estimate does not include parking off shoulder in areas restricted with noparking signs.

Proposed Parking Supply: Montara Beach

Beach Parking	Spaces	Status
Montara State Beach - North Lot ¹	37	Unpaved
Montara State Beach - South Lot	22	Paved
Restaurant North Lot	27	Paved (publicly available until 5:00 PM)
Restaurant South Lot	18	Paved (publicly available until 5:00 PM)
Formalized Parallel Parking ²	31	Currently unpaved, west side of hwy
Subtotal	135	

GGNRA Parking

New Off-Street Surface Lot	60	Fallow field 1/4 mile east of highway
Subtotal: Spaces for Trail Access	60	
Total Spaces	195	

¹Consider formalization and expansion of lot if surveys show that utilization at all 3 paved facilities regularly exceeds 90% occupancy AND if illegal on-street parking remains prevalent. ²Formalize dirt shoulder parking area west side of the hwy as parallel parking, with barrier separation from the hwy and one lane, one-way SB access lane extending approximately 600' from a one-way entrance on the north end to a one-way exit on the south end.