



Measure AA Update

August 2019



Midpen Mission



“To acquire a regional greenbelt of open space land in perpetuity, protect and restore the natural environment, and provide opportunities for ecologically sensitive public enjoyment and education.”



Midpen Jurisdiction and Open Space Preserves



#	Preserves
1	Bear Creek Redwoods Opening in 2019
2	Coal Creek
3	El Corte de Madera Creek
4	El Sereno
5	Foothills
6	Fremont Older
7	La Honda Creek
8	Long Ridge
9	Los Trancos
10	Miramontes Ridge
11	Monte Bello
12	Picchetti Ranch
13	Pulgas Ridge
14	Purisima Creek Redwoods
15	Rancho San Antonio
16	Ravenswood
17	Russian Ridge
18	Saratoga Gap
19	Sierra Azul
20	Skyline Ridge
21	St. Joseph's Hill
22	Stevens Creek Shoreline Nature Study Area
23	Teague Hill
24	Thornewood
25	Tunitas Creek
26	Windy Hill



About Midpen Open Space

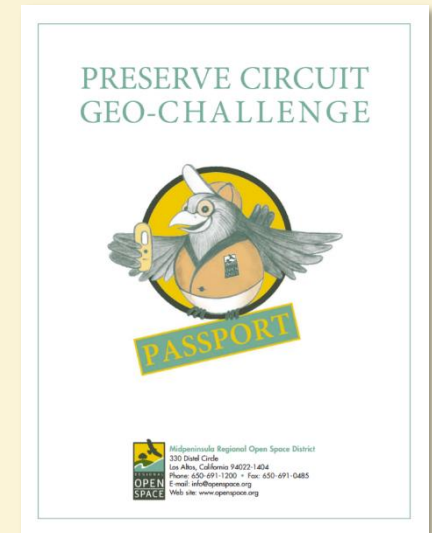
- Public agency, created in 1972 by a grassroots voter initiative
- Elected board: seven directors
- Funded primarily through property tax
- 26 preserves in Santa Clara, San Mateo and Santa Cruz counties
- Preserved nearly 65,000 acres, built/maintain 240+ miles of trails
- Preserves are free and open to the public
- Main office in Los Altos + field offices
- 180 employees, 600 volunteers





Free Open Space Activities

- 240 miles of open space **hiking** trails
- 16 preserves with **mountain bike** trails
- 11 preserve are **dog-friendly** (1 off-leash area)
- Black Mountain **Backpack Camp**
- Free **docent-led hikes**
- **Geocaching** challenge
- **Volunteer** opportunities
- **Equestrian** trails



Volunteer Programs



- ✦ Preserve Partner
- ✦ Trail Patrol Volunteer
- ✦ Nature Center Host
- ✦ Outdoor Activity Docent
- ✦ Outdoor Education Leader





Outdoor Education Areas

‡ Daniels Nature Center

- Skyline Ridge Preserve
- Learn about pond habitats
- Explore Alpine Pond
- Open on weekends, spring-fall



‡ Deer Hollow Farm

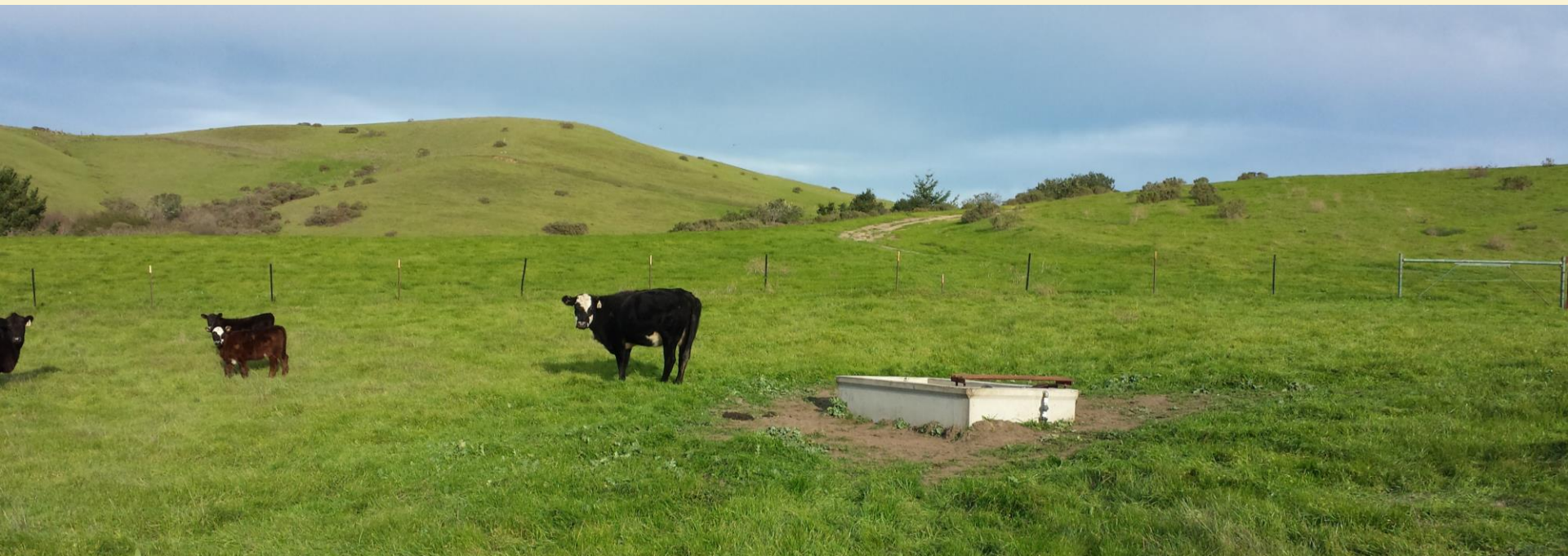
- Rancho San Antonio Preserve
- Working historic farm
- Goats, chickens, pigs & more





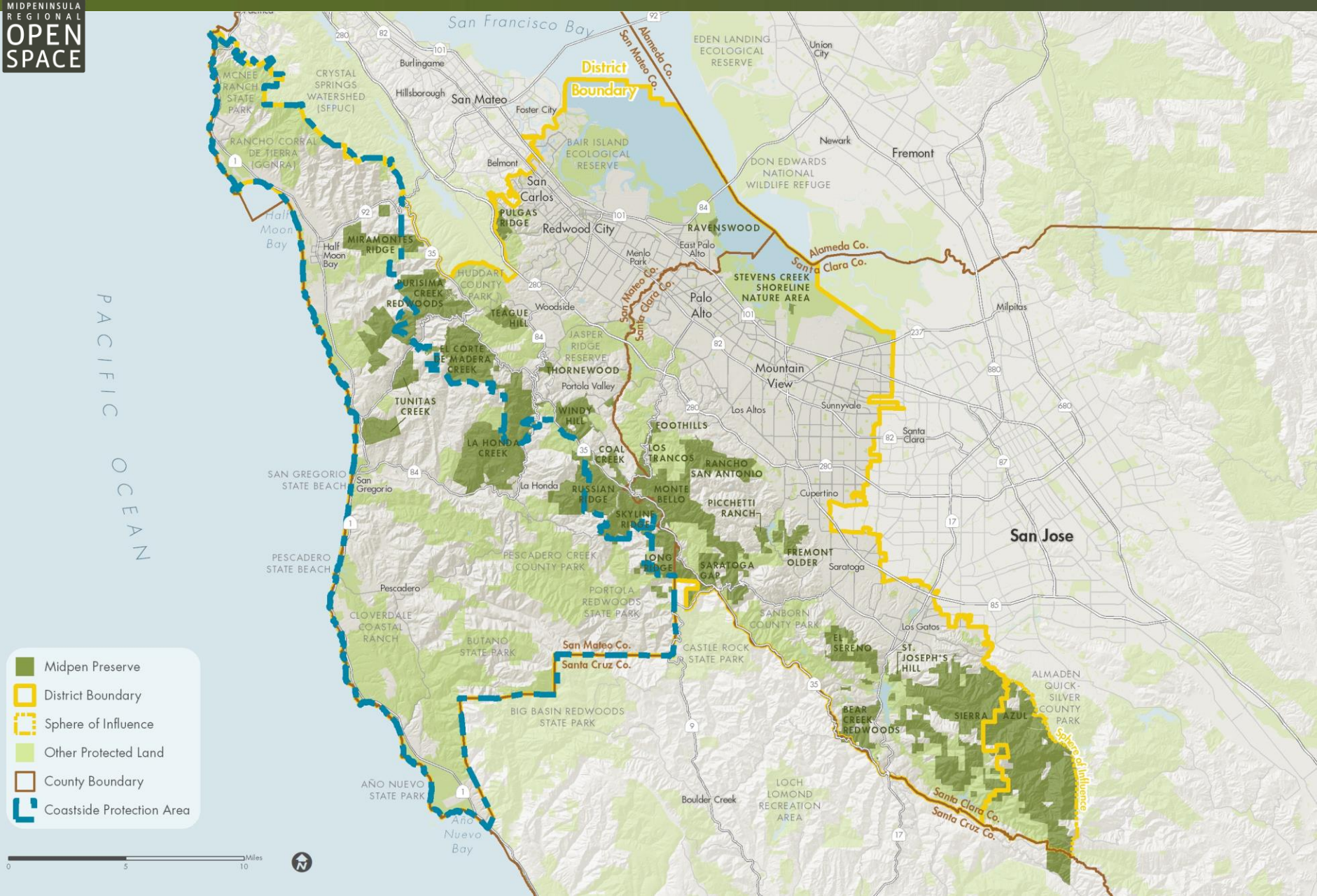
Background – Midpen Partnership on the Coast

- Local concerns about agriculture, open space protection
- Coastal advisory vote supporting Midpen extension into the coast
- 2003 Coastal Service Plan adopted; LAFCo approval in 2004
- Began purchasing lands with Driscoll Ranch as an early acquisition; has remained in active grazing since 2006 purchase





Coastside Protection Area





Coastside Mission

“To acquire and preserve in perpetuity open space land and agricultural land of regional significance, protect and restore the natural environment, preserve rural character, encourage viable agricultural use of land resources, and provide opportunities for ecologically sensitive public enjoyment and education.”





Purisima Creek Redwoods Open Space Preserve





La Honda Creek Open Space Preserve





Mindego Hill Trail in Russian Ridge Preserve





2012 Vision Plan & 2014 Measure AA Bond

- Vision Plan: informed by science, guided by public input; 54 priority actions
- Top 25 Priority Actions → Measure AA Expenditure Plan
- Voters approve Measure AA in 2014 (67.96%); \$300M General Obligation Bond



Celebrating 5 Years of Measure AA Accomplishments

\$16 Million of Measure AA Coastside Investments to Date

- Preservation of scenic and agricultural coastal lands
- Restoration of watersheds and native habitat for improved water quality and ecological health
- Opening of new coastal properties to public use with new public access facilities
- Installation and major repairs to grazing/ag infrastructure





Measure AA Portfolios*

↔ Regional Trail Connection Projects*

● Midpen Open Space Preserves

*Represents Generalized Locations



Measure AA Portfolios*

↔ Regional Trail Connection Projects*

● Midpen Open Space Preserves

*Represents Generalized Locations



Measure AA Funding - Coastside

Measure AA in the Coastside Protection Area	MAA Allocation
MAA 1 - Miramontes Ridge: Gateway to the Coast Public Access, Stream Restoration, and Agricultural Enhancement	\$27,774,000
MAA 3 - Purisima Creek Redwoods: Purisima-to-the Sea Trail, Watershed Protection, and Conservation Grazing	\$7,608,000
MAA 7 - La Honda Creek: Driscoll Ranch Public Access, Endangered Wildlife Protection and Conservation Grazing	\$14,825,000
MAA 8 - La Honda Creek/Russian Ridge: Preservation of Upper San Gregorio Watershed and Ridge Trail Completion	\$15,347,000
MAA 9 - Russian Ridge: Public Recreation, Grazing, and Wildlife Protection	\$5,560,000
MAA 13 - Cloverdale Ranch: Wildlife Protection, Grazing and Trail Connections	\$15,712,000
MAA 14 - Regional: Trail Connections and Campgrounds	\$3,966,000
MAA 15 - Regional: Redwood Protection and Salmon Fishery Conservation	\$50,728,000
Total	\$141,520,000



Measure AA Coastside Accomplishments to Date





More than 1,360 ac of Protected Open Space/Ag Land



Watershed and Habitat Restoration Work

Pond Restoration

Provides successful breeding habitat for California Red-legged Frog, and maintains grazing infrastructure



Failing pond



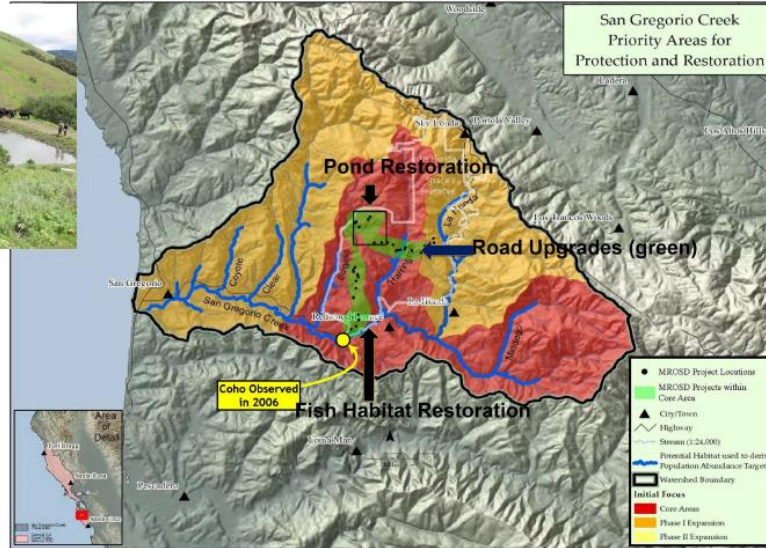
Pond reconstruction



Repaired pond



Adopted From: NOAA, National Marine Fisheries Service (2012, Final Central Coast Coho Recovery Plan)



Upslope Watershed Restoration: Roads



Road re-shaping, surfacing, and drainage upgrades to reduce sediment input to fish-bearing streams downslope



Fish Habitat Restoration: Streams



Steelhead rainbow trout



Coho salmon

San Gregorio Creek, 2015



Secured log fisheries habitat structure installations

Installed structures, 2017

Restoration Partners





Public Access – Lower La Honda Creek / Mindego Hill & New Facilities at Purisima Creek Redwoods



A Legacy of Grazing - Beautiful and Beneficial

Grazing is integral to the history of the San Mateo Coast. This protected acreage, once made up of private ranches, continues to be leased for cattle grazing as a method of land management at La Honda Creek Open Space Preserve. Livestock grazing promotes new growth of native plants and grasses. Grazing decreases fire danger by reducing the fuel and helps control invasive non-native vegetation.

La Honda History:

- Cattle have been present on the active remnants of the land for generations. Plant and animal resources are linked and dependent on each other to provide for food, fiber, commercial and medicinal needs.
- 1876 - 1881: Grazing and farming began on the property during the Mexican Land Grant period.
- 1890s - 1920s: Cattle and sheep were used for range and beef cattle, and wool raised for weaving. They also used for food, production of tallow and hides, or market skins for leather.
- 1920s - Present: Beef cattle produce for grazing and hides as a major source of income and an important element of the coastal economy, supporting the local ranch and continuing the agricultural heritage of the region.

Keep the Peace - Don't Disturb Cattle

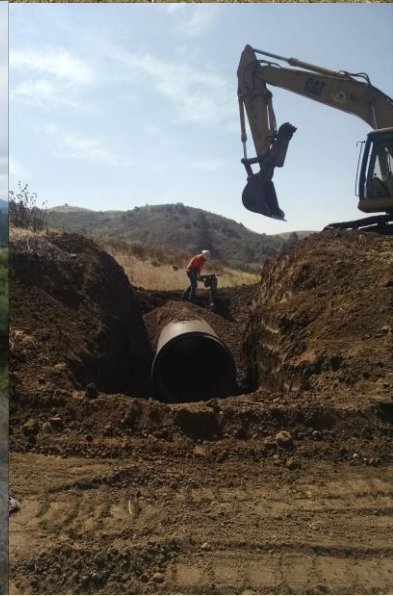
- Being in the distance, respect cattle space, normally and allow them to move away on their own.
- Cows are protective of their young - don't get between a calf and its mother and don't try to touch them.
- Cows are not aggressive by nature, but they do exhibit reactions if they are cornered or feel threatened.
- Please always use pedestrian gates.

Midpeninsula Regional Open Space District





Grazing Infrastructure – Fencing, Waterlines, Troughs, Water Pump, Stock Pond & Ranch Road Repairs





Example: Driscoll Ranch Grazing Improvements



3,681 acres, grazed year-round

Working with tenant, installed:

- 20 new concrete water troughs
- 7 new water storage tanks
- 3 solar powered pumps
- 29,000 feet of new pipe (5 ½ miles)
- One new corral
- And, completed repairs to fences, roads, springs, old troughs, and corrals.





2019 – Coastsiders Begin to Contribute to MAA

- 2019 Tax Rate = \$1.60 per \$100,000 of assessed value (AV)
- Equivalent to \$16.00 for \$1M of AV
- Well below the maximum of \$3.18 per \$100,000 AV
- Will begin to appear in county property tax bills starting fall 2019



Coastside Outreach and Communications

Meeting with numerous groups and issuing a mailer

- Half Moon Bay Town Mayor, Vice Mayor, City Manager
- San Mateo County Farm Bureau
- Supervisor Horsley
- Pescadero Municipal Advisory Council
- Midcoast Community Council
- Coastside mailing



Coastside Brochure



Legend	Preserves	Preserves	Preserves
Hiking	Bear Creek Redwoods	Miramontes Ridge*	Sierra Azul
Equestrian	Coal Creek	Monte Bello	Skyline Ridge
Cycling	El Corto de Madera Creek	Picchetti Ranch	St. Joseph's Hill
Dog walking	El Surano	Pulgas Ridges	Stevens Creek Shoreline Nature Study Area
Easy-access trails	Foothills	Purisima Creek Redwoods	Teague Hill
Restrooms	Fremont Older	Rancho San Antonio	Thomawood
	La Honda Creek	Ranzenwood	Tunitas Creek*
	Long Ridge	Russian Ridge	Windy Hill
	Los Trancos	Saratoga Gap	

15 FOREST, SALMON AND WATERSHED PROTECTION
Protect redwoods, Pescadero Creek watershed, wildlife habitat

14 TRAIL CONNECTIONS
Connect surrounding regional trail systems

13 CLOVERDALE RANCH
Protect endangered wildlife, expand grazing, connect trails

9 RUSSIAN RIDGE PRESERVE
Expand trails and grazing, interpret history, improve wildlife habitat

MEASURE AA-FUNDED COASTSIDE PROJECTS
See the complete list of Measure AA Vision Plan projects at www.top25.openspace.org.

1 MIRAMONTES RIDGE PRESERVE
Create access, restore streams, enhance agriculture

Mitpen staff

3 PURISIMA CREEK REDWOODS PRESERVE
Build Purisima-to-the-Sea Trail, protect watersheds, expand grazing

Sandy Sommer

7 LA HONDA CREEK PRESERVE
Protect endangered wildlife, expand public access and grazing

Reuben Garcia

8 RUSSIAN RIDGE PRESERVE
Preserve San Gregorio watershed, extend Bay Area Ridge Trail

Kenny Chen



Coastside Brochure

ENJOY YOUR COASTSIDE OPEN SPACE



Karl Gohl



Frances Freyberg

CONNECT

Free Nature Activities

Midpen offers free docent-led activities year round, including nature walks, hikes, mountain bike and equestrian rides. Activities are posted at preserves, online and in our newsletter.



Michael Crien

Volunteer

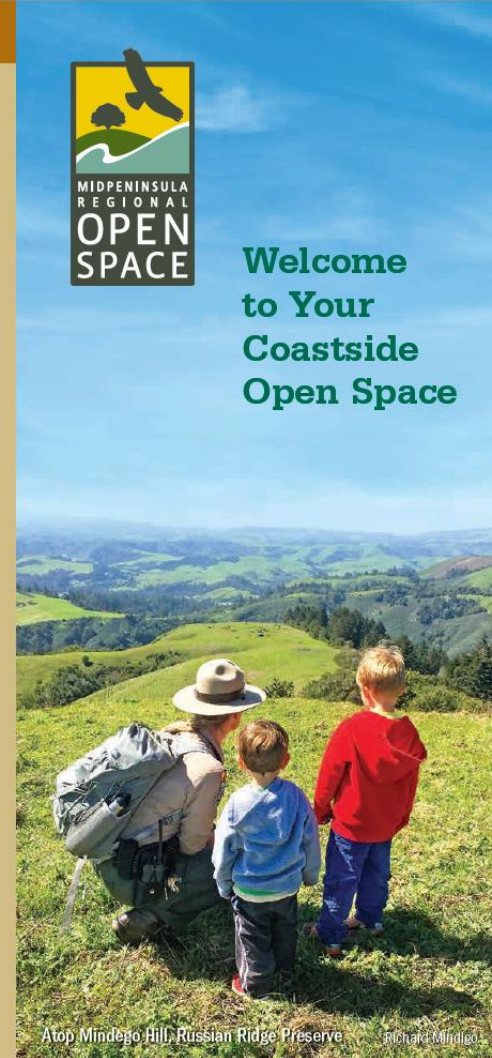
Over 600 volunteers support Midpen each year by guiding activities and school field trips, patrolling trails, assisting with land stewardship and trail maintenance, and more.

Contact Us

Midpeninsula Regional Open Space District
330 Distel Circle
Los Altos, CA 94022
650-691-1200
info@openspace.org
openspace.org



Welcome to Your Coastside Open Space



Atop Mindego Hill, Russian Ridge Preserve Richard Mindiga

Purisima Creek Redwoods Preserve



This preserve's centerpiece is Purisima Creek Canyon, with towering redwoods, rushing creeks and an understory of ferns, berries and wildflowers. Surrounding coastal scrub and mixed hardwood forests offer magnificent views of the coast. More than 24 miles of trails provide opportunities for visitors of all abilities.

La Honda Creek Preserve



This preserve offers 10 miles of trails through ranchland alongside grazing cattle and shaded creeks. Rolling grasslands to the south provide spectacular panoramic views, while the northern area features redwood forests. The preserve's size and diversity provide excellent wildlife habitat, making it a popular birding destination.

*Dog access by permit only on designated trails.



Charles Tu



Jack Gescheldt

Mindego Gateway Russian Ridge Preserve



The Mindego Hill Trail winds through a working cattle ranch and up to the summit of this iconic landmark, with sweeping 360-degree vistas of the coast and Santa Cruz Mountains. Views can also be enjoyed near the parking area from a wheelchair-accessible terrace. Reach this coastal area of Russian Ridge Preserve, known for its showy spring wildflowers, from Alpine Road.

Daniels Nature Center Skyline Ridge Preserve



The David C. Daniels Nature Center is open weekends spring through fall. Volunteers help you explore touchable wildlife skulls, skins and engaging displays about the surrounding environment. A self-guided tour and interpretive signs connect you with nature along the easy-access trail around Alpine Pond. Afterward, enjoy a picnic or explore the surrounding Skyline Ridge Preserve.



Thank You – More to Come!

