

An aerial photograph of Half Moon Bay Airport in San Mateo County, California. The image shows the airport's runways and taxiways, surrounded by a mix of green fields, residential areas, and the ocean coastline with waves breaking on the shore. The sky is a clear, light blue.

AIRPORT LAND USE COMPATIBILITY PLAN  
FOR THE ENVIRONS OF  
**HALF MOON BAY AIRPORT**  
*in San Mateo County, California*



CITY/COUNTY ASSOCIATION OF GOVERNMENTS OF SAN MATEO COUNTY

# HALF MOON BAY AIRPORT ALUCP

## PRESENTATION OUTLINE

1. **Opening Remarks** – Sandy Wong, C/CAG Executive Director
2. **Who is on the Airport Land Use Commission?**
3. **What an Airport Land Use Compatibility Plan (ALUCP) is and what it isn't.**
4. **Why is the ALUCP being updated?**
5. **Who is doing the ALUCP Update?**
6. **What goes into an ALUCP?**
7. **What is the ALUCP Update schedule?**
8. **How can I get more information?**
9. **Questions/Comments**

HALF MOON BAY AIRPORT ALUCP

**WHO IS ON THE AIRPORT LAND  
USE COMMISSION?**

# HALF MOON BAY AIRPORT ALUCP

Exhibit 1B

## CITY/COUNTY ASSOCIATION OF GOVERNMENTS OF SAN MATEO COUNTY

- City of Brisbane
- City of Burlingame
- City of Daly City
- City of Foster City
- City of Half Moon Bay
- City of Milbrae
- City of Redwood
- City of San Bruno
- City of San Carlos
- City of South San Francisco
- County of San Mateo
- Aviation Representative
- Half Moon Bay Airport Pilot Associations



HALF MOON BAY AIRPORT ALUCP

**WHAT AN AIRPORT LAND USE  
COMPATIBILITY PLAN IS AND  
WHAT IT ISN'T.**

# HALF MOON BAY AIRPORT ALUCP

## **What an Airport Land Use Compatibility Plan is:**

- Seeks to protect the public from the adverse effects of airport noise, to ensure that people and facilities are not concentrated in areas susceptible to aircraft accidents, and to ensure that no structures or activities encroach upon or adversely affect the use of navigable airspace.

## **What it isn't:**

- Has no authority over airport operations. (Pub. Util. Code, Section 21674[e])
- Does not designate specific land uses for any particular parcel or parcels of land.
- Is not intended to remove existing incompatible uses.

HALF MOON BAY AIRPORT ALUCP

**WHY IS THE ALUCP  
BEING UPDATED?**

## HALF MOON BAY AIRPORT ALUCP

- Previous Half Moon Bay Airport Land Use Plan was prepared in 1996. (*1996 San Mateo County Comprehensive Airport Land Use Plan* [previously referred to as a CLUP]).
- Half Moon Bay Airport's layout plan, aviation activity forecasts, and noise contour maps have been updated since 1996.
- California Department of Transportation, Division of Aeronautics updated its airport land use planning guidance document the *2011 California Airport Land Use Planning Handbook*.



HALF MOON BAY AIRPORT ALUCP

**WHO IS PREPARING THE  
ALUCP UPDATE?**

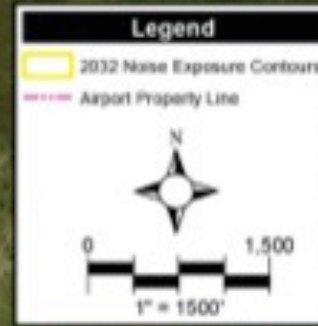
## HALF MOON BAY AIRPORT ALUCP

The ALUCP is being prepared by the City/County Association of Governments of San Mateo County (C/CAG) in its designated role as the Airport Land Use Commission for San Mateo County, under the authority of the State of California Aeronautics Law, State Aeronautics Act, Chapter 4, Article 3.5, California Public Utilities Code.

# WHAT GOES INTO AN AIRPORT LAND USE COMPATIBILITY PLAN?



# LONG RANGE NOISE CONTOURS



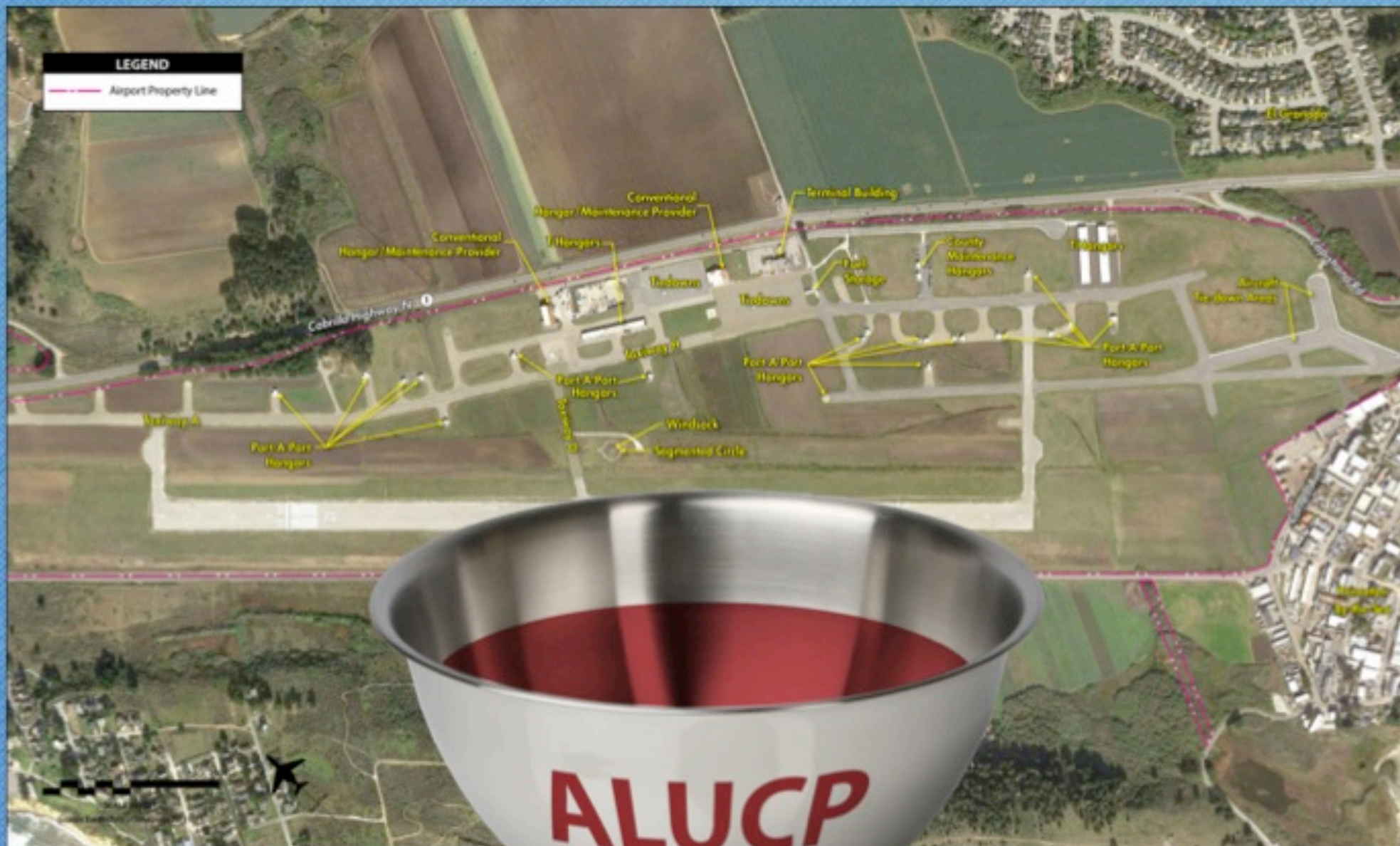
- In:
- Long Range Noise Contours



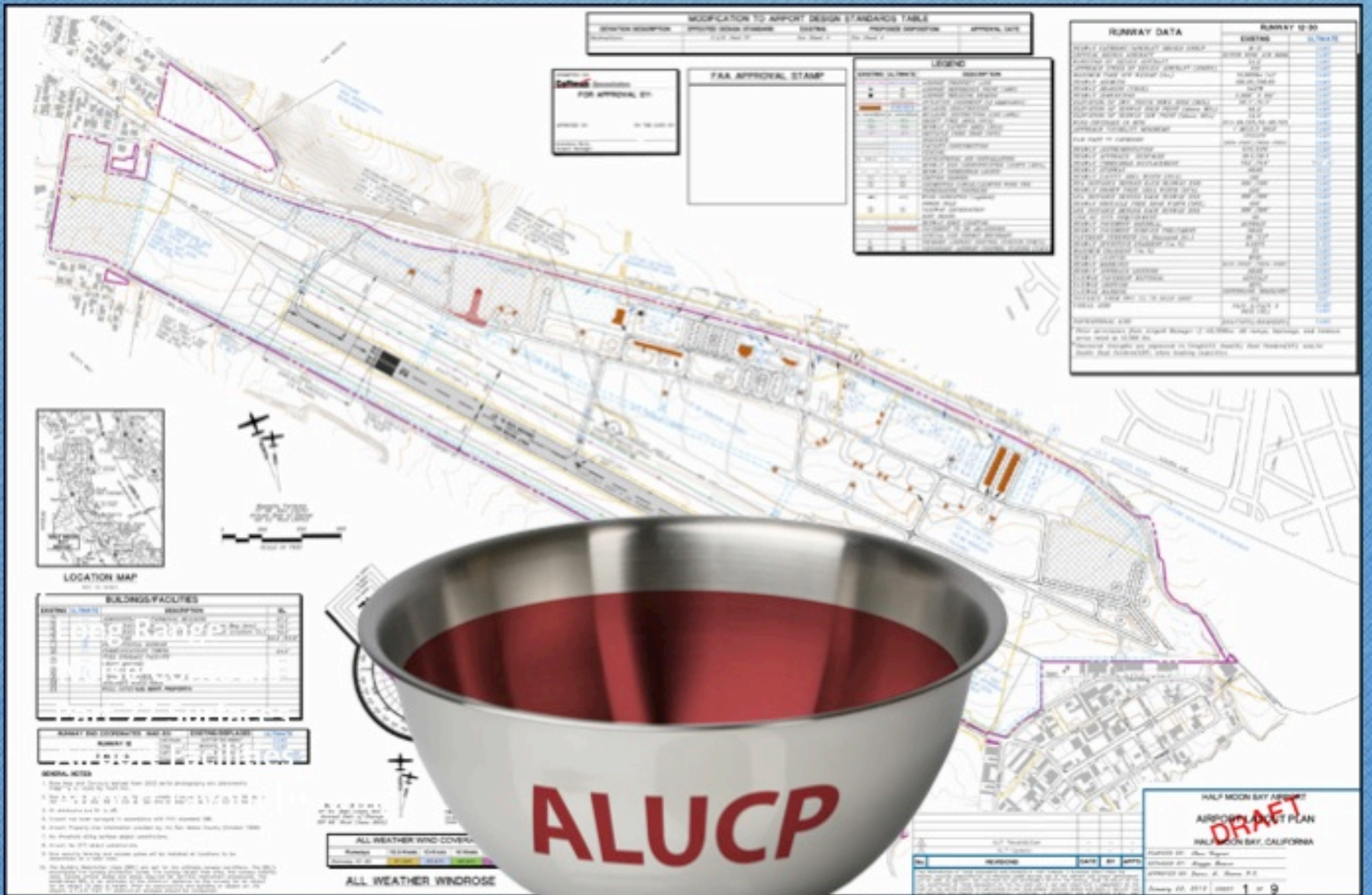
# PART 77 SURFACES



# AIRPORT FACILITIES



# AIRPORT LAYOUT DRAWING



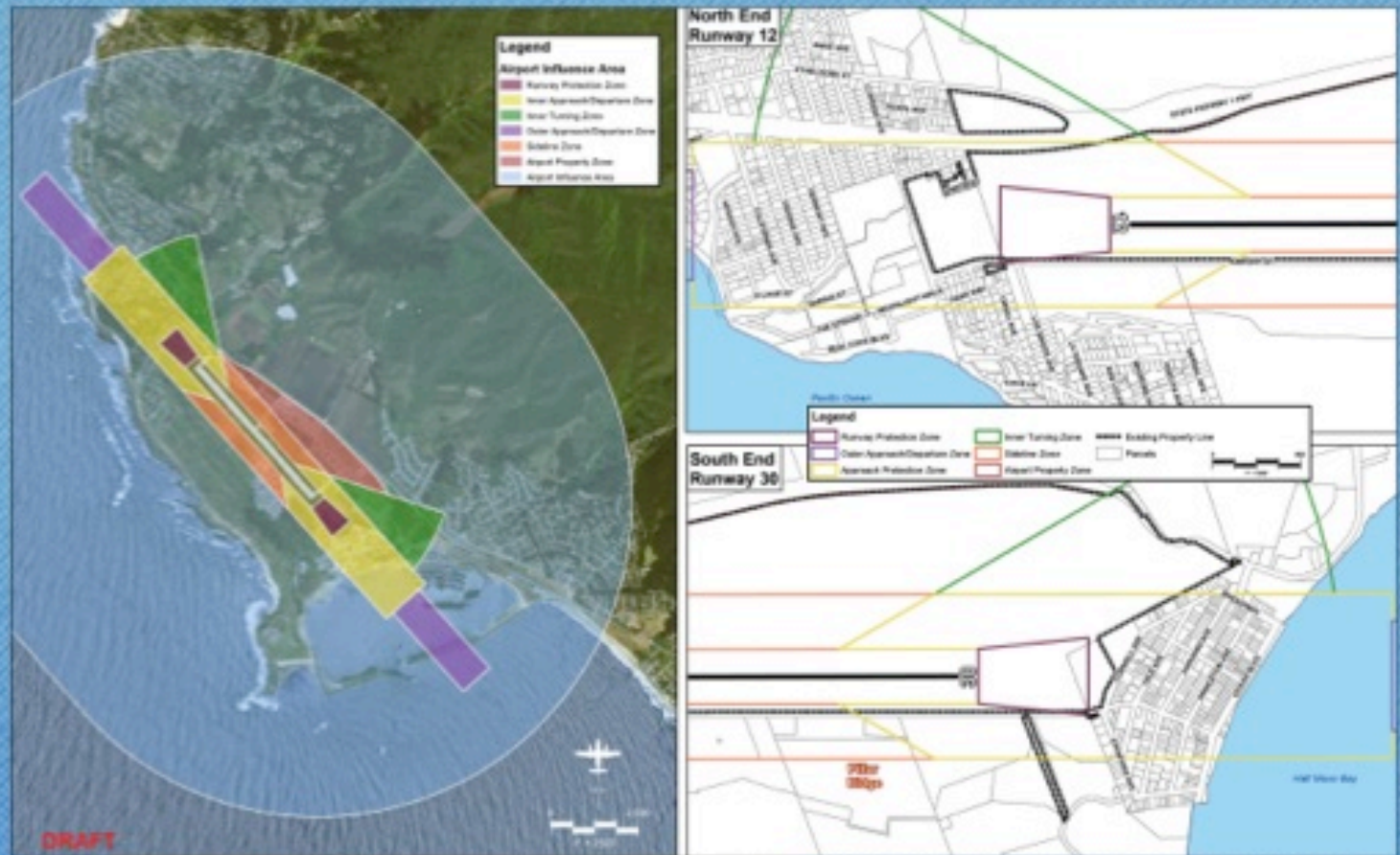
In:

- Long Range Noise Contours
- Part 77 Surfaces
- Airport Facilities
- Airport Layout Drawing
- California Airport Land Use Planning Handbook





# COMPATIBILITY ZONES



DRAFT

In:

- Long Range Noise Contours
- Part 77 Surfaces
- Airport Facilities
- Airport Layout Drawing
- California Airport Land Use Planning Handbook

Out:

- Compatibility Zones



# COMPATIBILITY CRITERIA

Zone	Maximum Densities (Disturbance) / Required Open Land			Additional Criteria	
	Dwelling Units per Acre <sup>1</sup>	Maximum Non-residential Intensity <sup>2</sup>	Required Open Land <sup>3</sup>	Prohibited Uses <sup>4</sup>	Other Development Conditions <sup>5</sup>
SP2	None	None	All around	<ul style="list-style-type: none"> <li>All structures except ones with location set by aeronautical function</li> <li>Assemblies of people</li> <li>Objects exceeding FAR Part 77 height limits</li> <li>Natural gas &amp; petroleum pipelines<sup>6</sup></li> <li>Dumps or landfills, other than those consisting entirely of earth &amp; rock</li> <li>Hazards to flight<sup>7</sup></li> </ul>	<ul style="list-style-type: none"> <li>Airport disclosure notice required</li> </ul>
MSM	1 d.u. per 10 acres	40 persons per acre	30%	<ul style="list-style-type: none"> <li>Residential, except for very low residential and infill in developed areas</li> <li>Hazardous uses (e.g., aboveground bulk fuel storage)</li> <li>Natural gas &amp; petroleum pipelines<sup>6</sup></li> <li>Office buildings greater than 3 stories</li> <li>Labor intensive industrial uses</li> <li>Children's schools, day care centers, libraries</li> <li>Hospitals, nursing homes</li> <li>Places of worship</li> <li>Schools</li> <li>Recreational uses, athletic fields, playgrounds, &amp; riding stables</li> <li>Theaters, auditoriums, &amp; stadiums</li> <li>Dumps or landfills, other than those consisting entirely of earth &amp; rock</li> <li>Waterways that create a bird hazard</li> <li>Hazards to flight<sup>7</sup></li> </ul>	<ul style="list-style-type: none"> <li>Airport disclosure notice required</li> <li>Locate structures maximum distance from extended runway centerline</li> <li>Airspace review required for objects &gt; 35 feet tall<sup>8</sup></li> </ul>
STZ	1 d.u. per 2 acres	100 persons per acre	20%	<ul style="list-style-type: none"> <li>Residential, except for low residential and infill in developed areas</li> <li>Hazardous uses (e.g., aboveground bulk fuel storage)</li> <li>Natural gas &amp; petroleum pipelines<sup>6</sup></li> <li>Buildings with more than 3 aboveground habitable floors</li> <li>Children's schools, day care centers, libraries</li> <li>Hospitals, nursing homes</li> <li>Places of worship</li> <li>Schools</li> <li>Recreational uses, athletic fields, playgrounds, &amp; riding stables</li> <li>Theaters, auditoriums, &amp; stadiums</li> <li>Dumps or landfills, other than those consisting entirely of earth &amp; rock</li> <li>Waterways that create a bird hazard</li> <li>Hazards to flight<sup>7</sup></li> </ul>	<ul style="list-style-type: none"> <li>Same as MSM zone</li> </ul>

In:

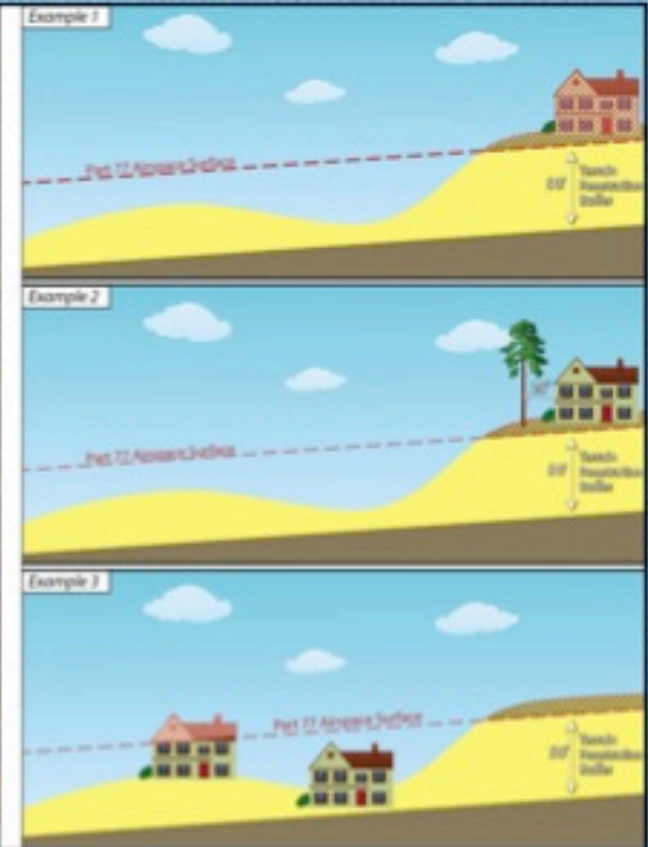
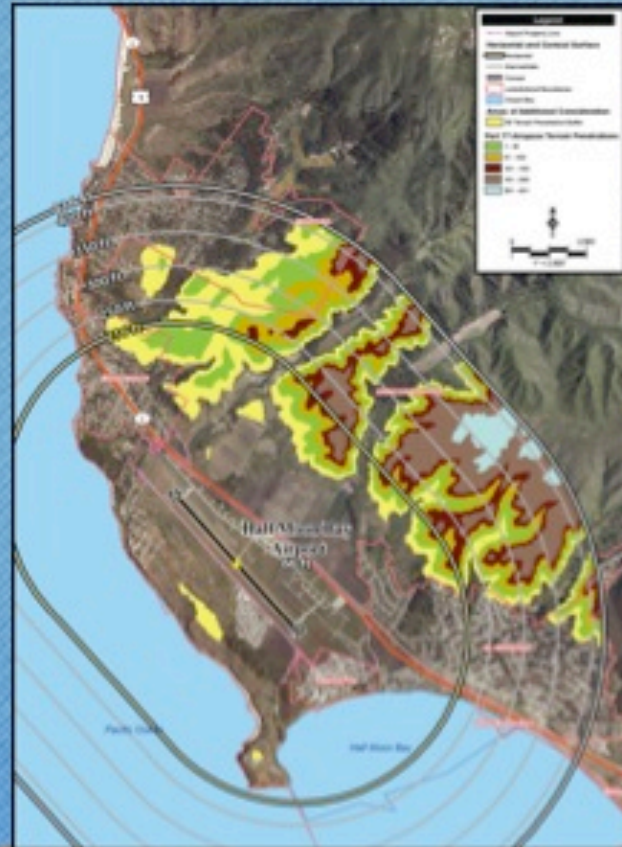
- Long Range Noise Contours
- Part 77 Surfaces
- Airport Facilities
- Airport Layout Drawing
- California Airport Land Use Planning Handbook



Out:

- Compatibility Zones
- Compatibility Criteria

# COMPATIBILITY POLICIES



## In:

- Long Range Noise Contours
- Part 77 Surfaces
- Airport Facilities
- Airport Layout Drawing
- California Airport Land Use Planning Handbook



## Out:

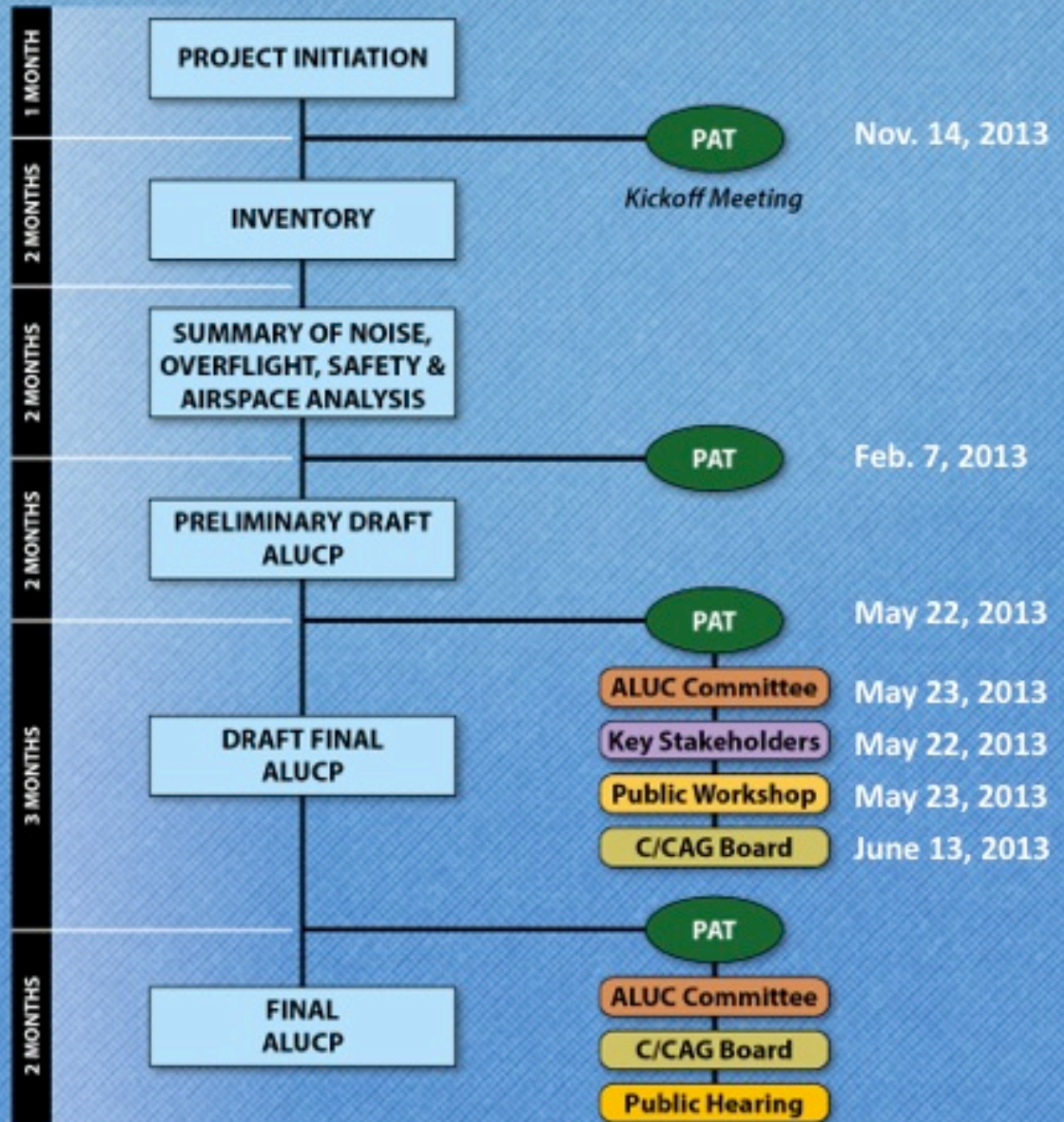
- Compatibility Zones
- Compatibility Criteria
- Compatibility Policies

# HALF MOON BAY AIRPORT ALUCP

## AIRPORT LAND USE COMPATIBILITY SCHEDULE

**WE ARE HERE** →

**KEY:**  
**ALUCP** - Airport Land Use Compatibility Plan  
**ALUC** - Airport Land Use Committee  
**PAT** - Planning Advisory Team  
**C/CAG** - City/County Association of Governments



\* An optional coordination meeting is also available if needed

HALF MOON BAY AIRPORT ALUCP

**HOW CAN I GET MORE  
INFORMATION?**

## HALF MOON BAY AIRPORT ALUCP

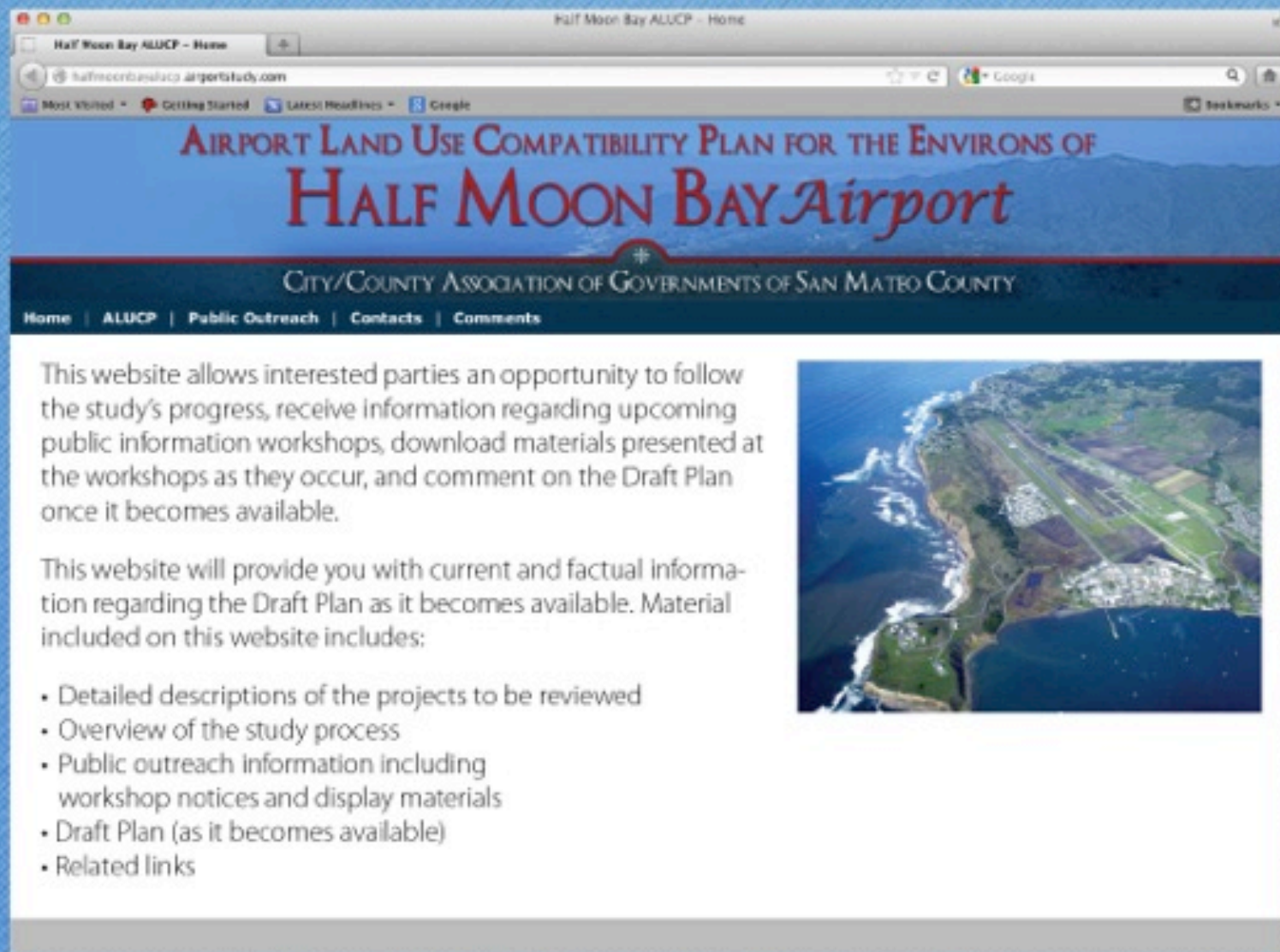
### **Public Information Workshop:**

May 23, 2013 from 7:30 to 9:30 p.m. at the  
Pillar Ridge Community Center  
164 Culebra Ln.  
Moss Beach, CA 94038

### **Study Website:**

<http://halfmoonbayalucp.airportstudy.com>

# HALF MOON BAY AIRPORT ALUCP CUSTOM WEBSITE SPECIFIC TO THIS AIRPORT STUDY



The screenshot shows a web browser window with the title "Half Moon Bay ALUCP - Home". The address bar contains "halfmoonbayalucp.airportstudy.com". The main heading reads "AIRPORT LAND USE COMPATIBILITY PLAN FOR THE ENVIRONS OF HALF MOON BAY Airport". Below this is the text "CITY/COUNTY ASSOCIATION OF GOVERNMENTS OF SAN MATEO COUNTY". A navigation menu includes "Home", "ALUCP", "Public Outreach", "Contacts", and "Comments". The main content area features two paragraphs of text and a bulleted list. To the right of the text is an aerial photograph of the Half Moon Bay Airport and surrounding coastal area.

This website allows interested parties an opportunity to follow the study's progress, receive information regarding upcoming public information workshops, download materials presented at the workshops as they occur, and comment on the Draft Plan once it becomes available.

This website will provide you with current and factual information regarding the Draft Plan as it becomes available. Material included on this website includes:

- Detailed descriptions of the projects to be reviewed
- Overview of the study process
- Public outreach information including workshop notices and display materials
- Draft Plan (as it becomes available)
- Related links

website address: [halfmoonbayalucp.airportstudy.com](http://halfmoonbayalucp.airportstudy.com)

CITY/COUNTY ASSOCIATION OF GOVERNMENTS OF SAN MATEO COUNTY

HALF MOON BAY AIRPORT ALUCP

**QUESTIONS/COMMENTS?**



HALF MOON BAY AIRPORT ALUCP

**THANK YOU!**

# HALF MOON BAY AIRPORT ALUCP