

Parallel Trail

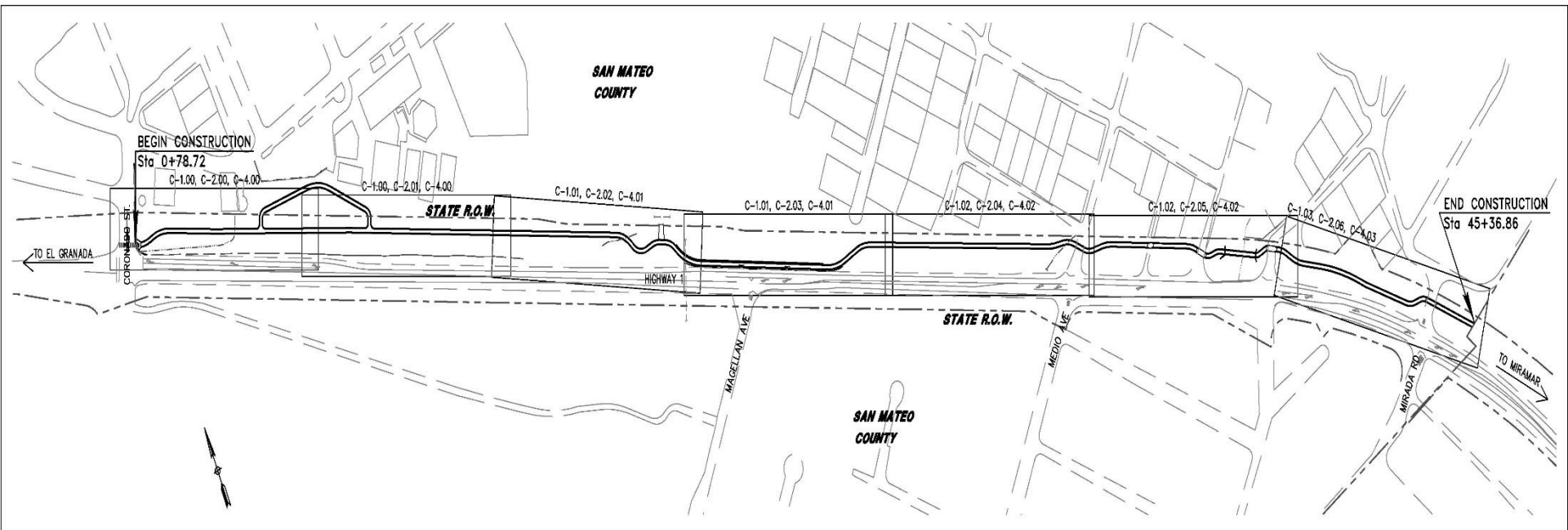
(Mid-Coast Multi-Modal Trail)

60% Plan submittal update

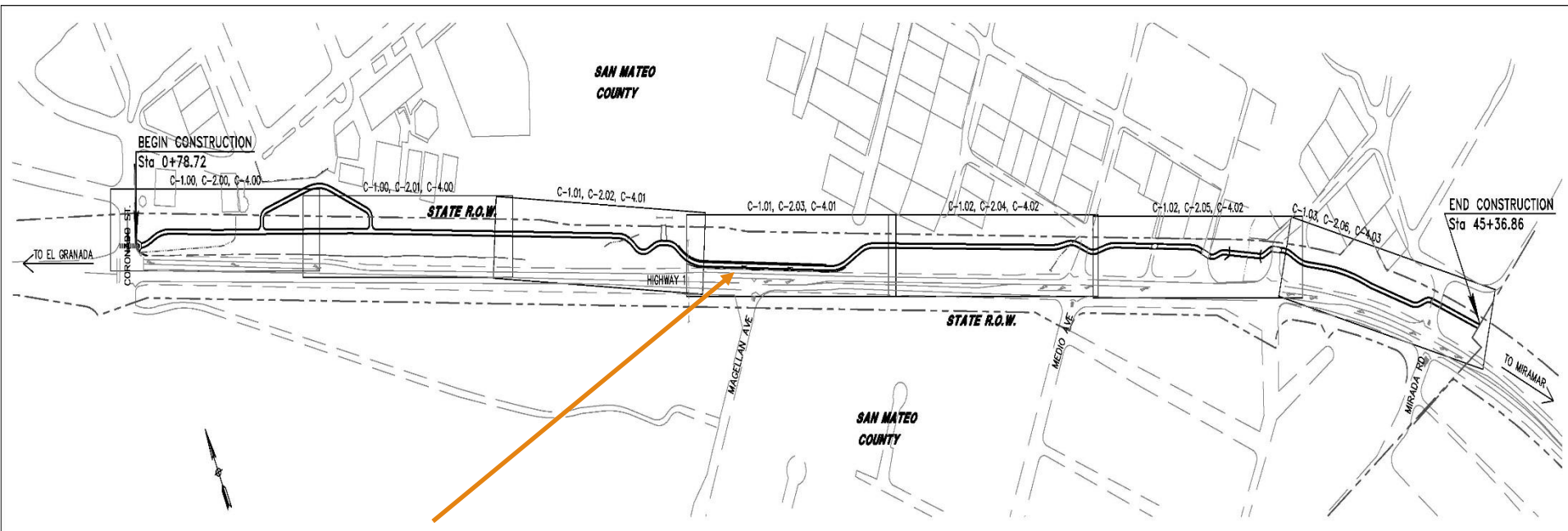
MID-COAST COMMUNITY COUNCIL

MARCH 14, 2018

Working Trail Alignment

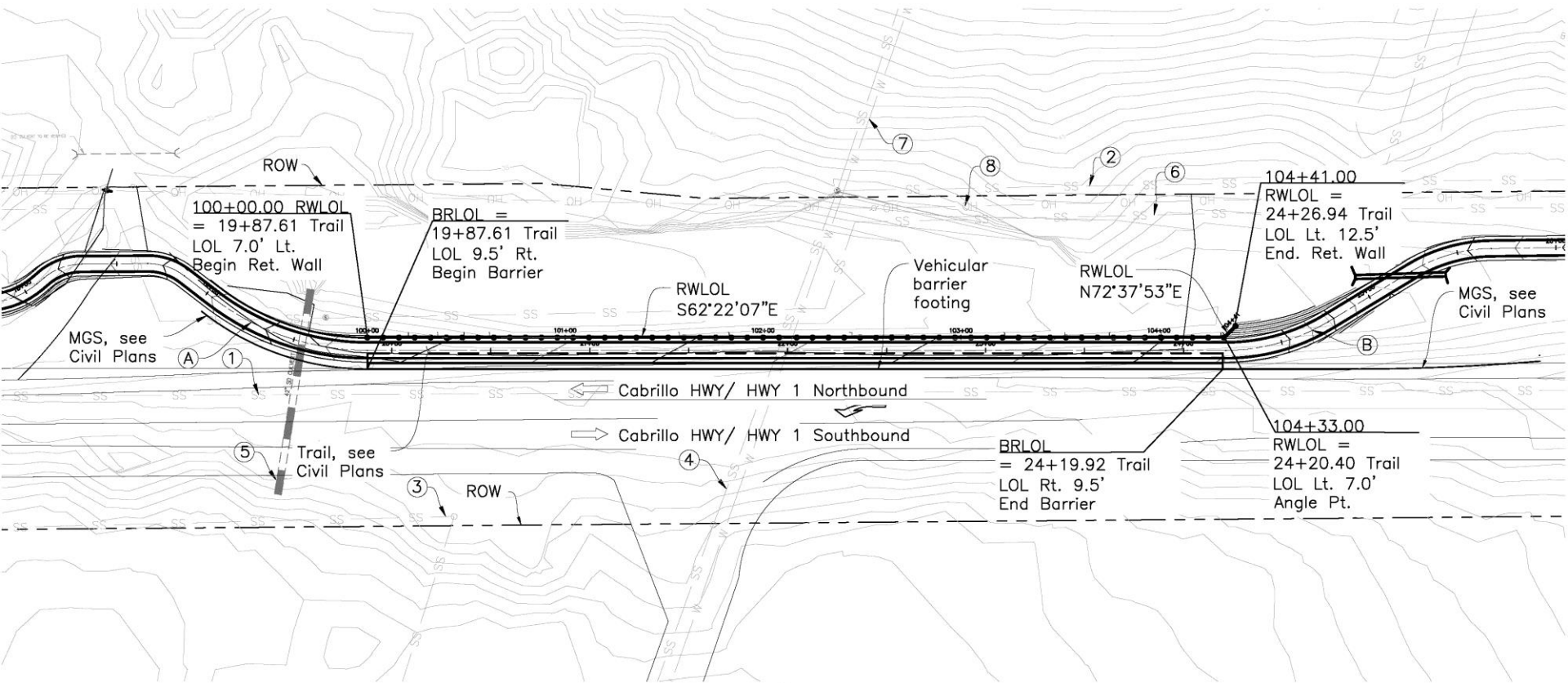


Proposed Trail Alignment

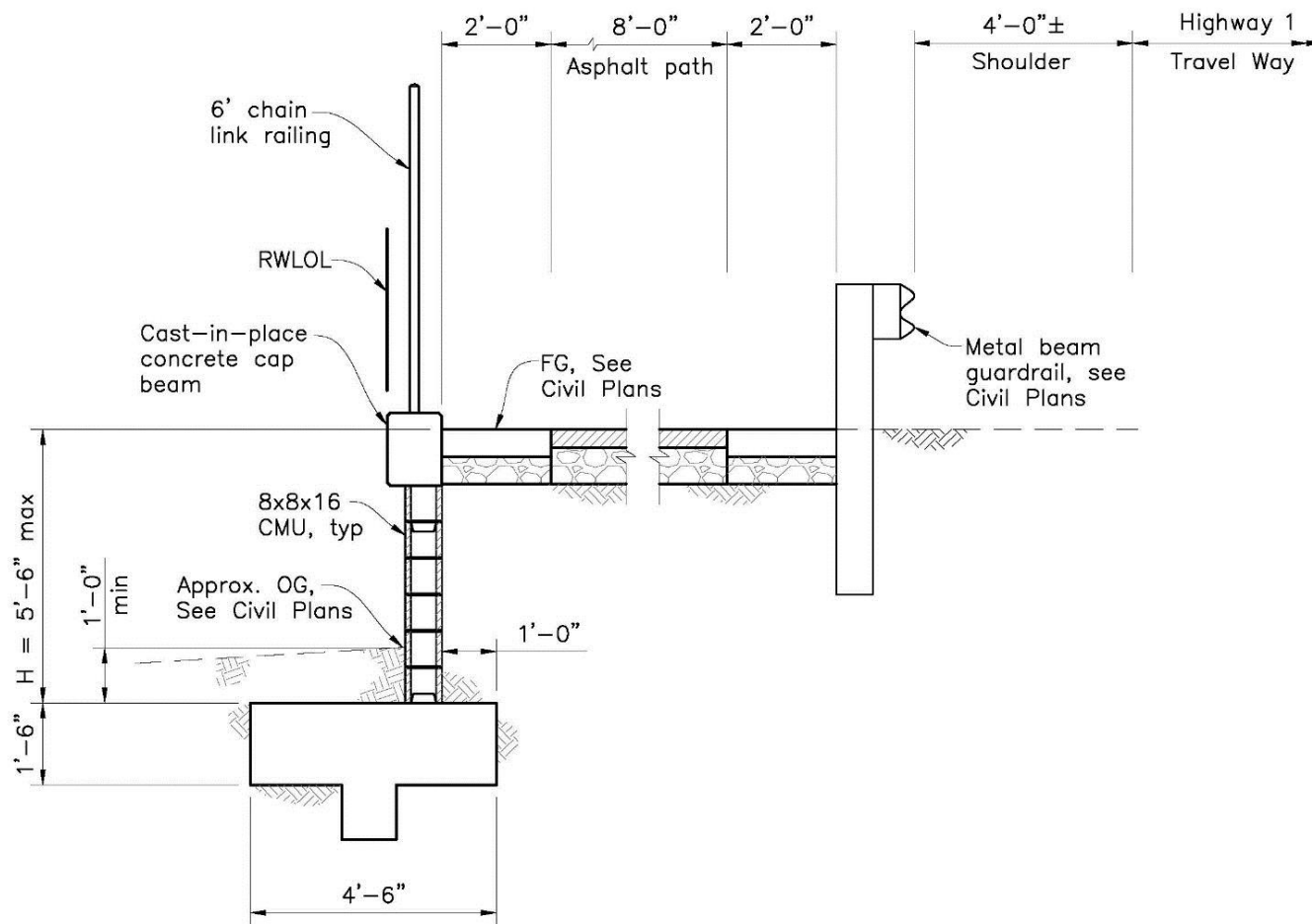


Willow Thicket Retaining Wall

Willow Thicket Retaining Wall



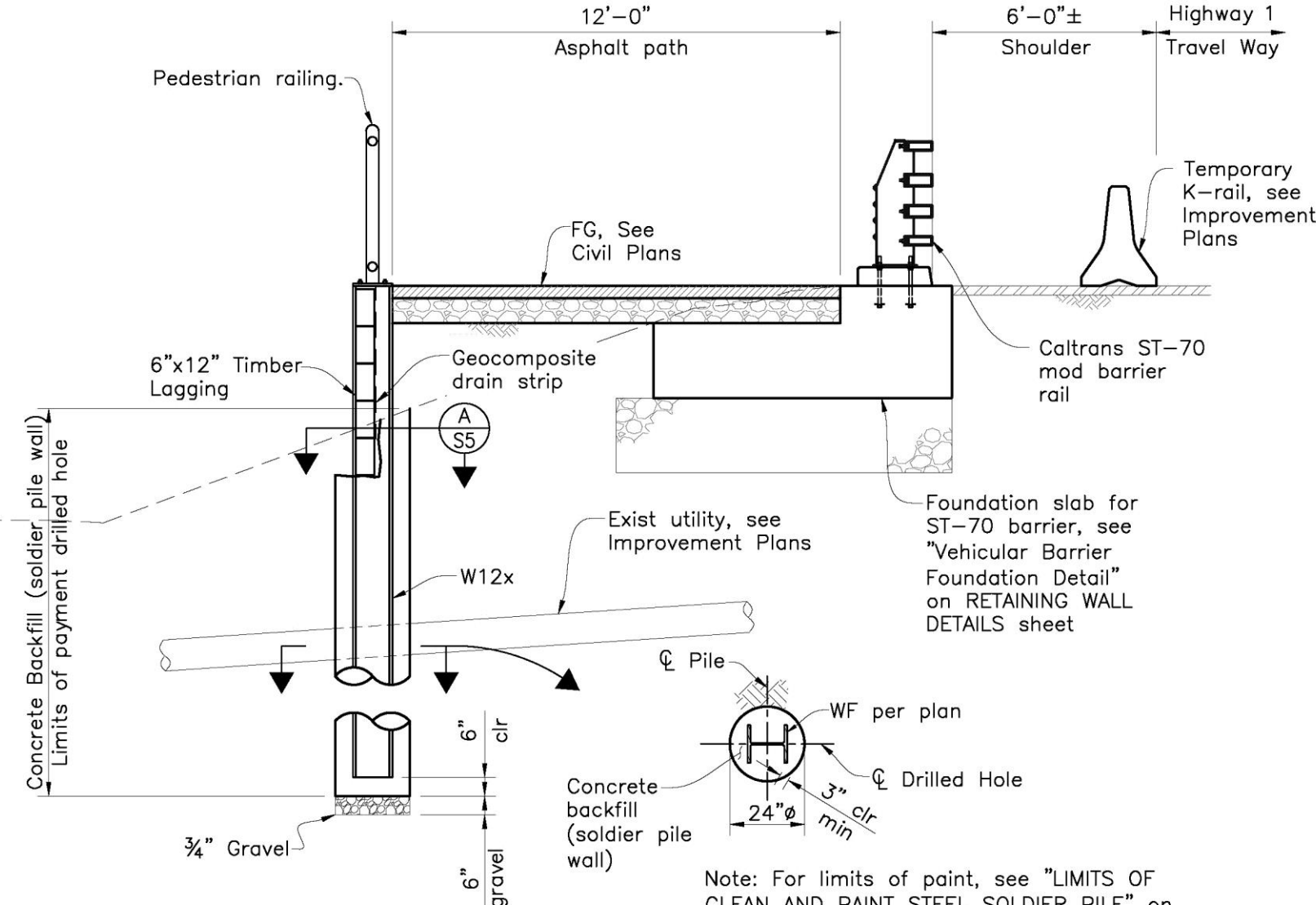
Original Retaining Wall Cross Section



TYPICAL SECTION

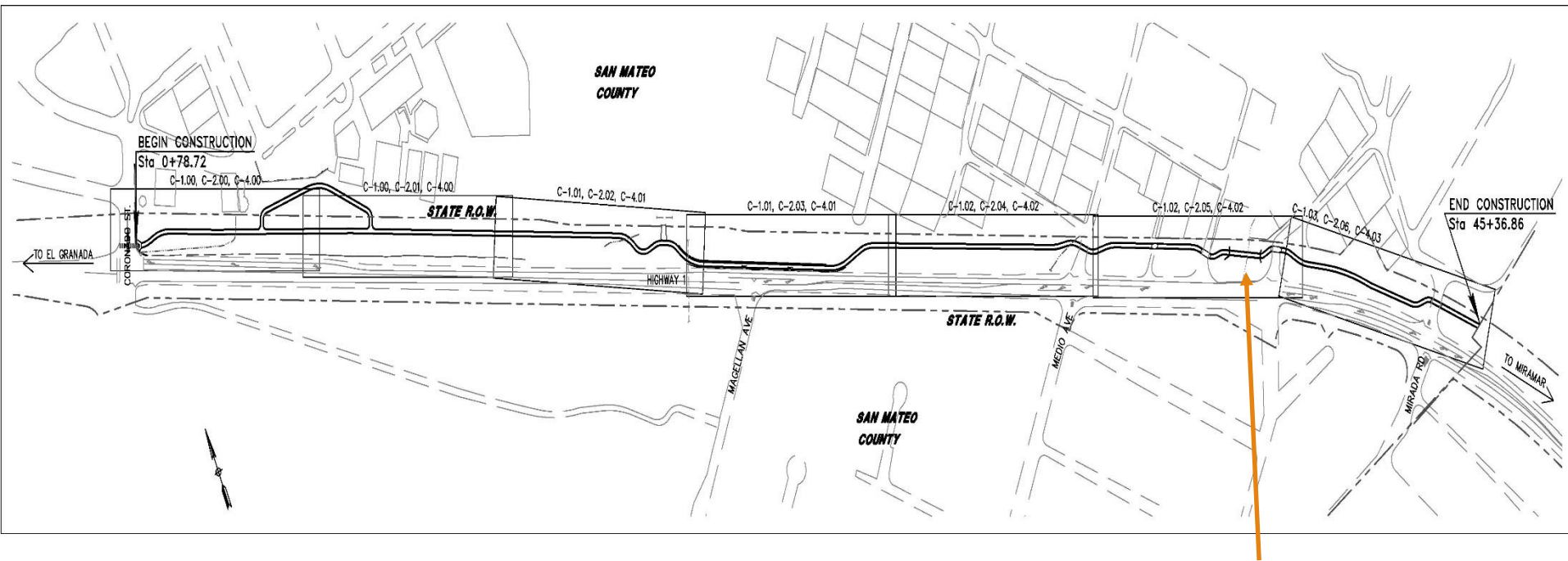
1/2" = 1'-0"

Revised Retaining Wall Cross Section



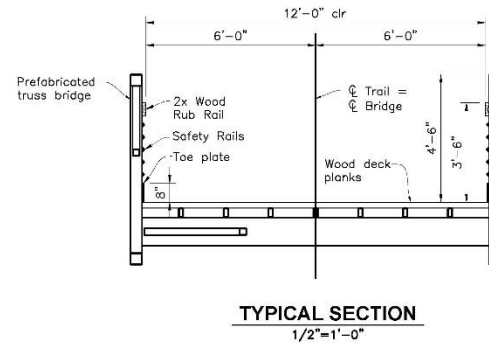
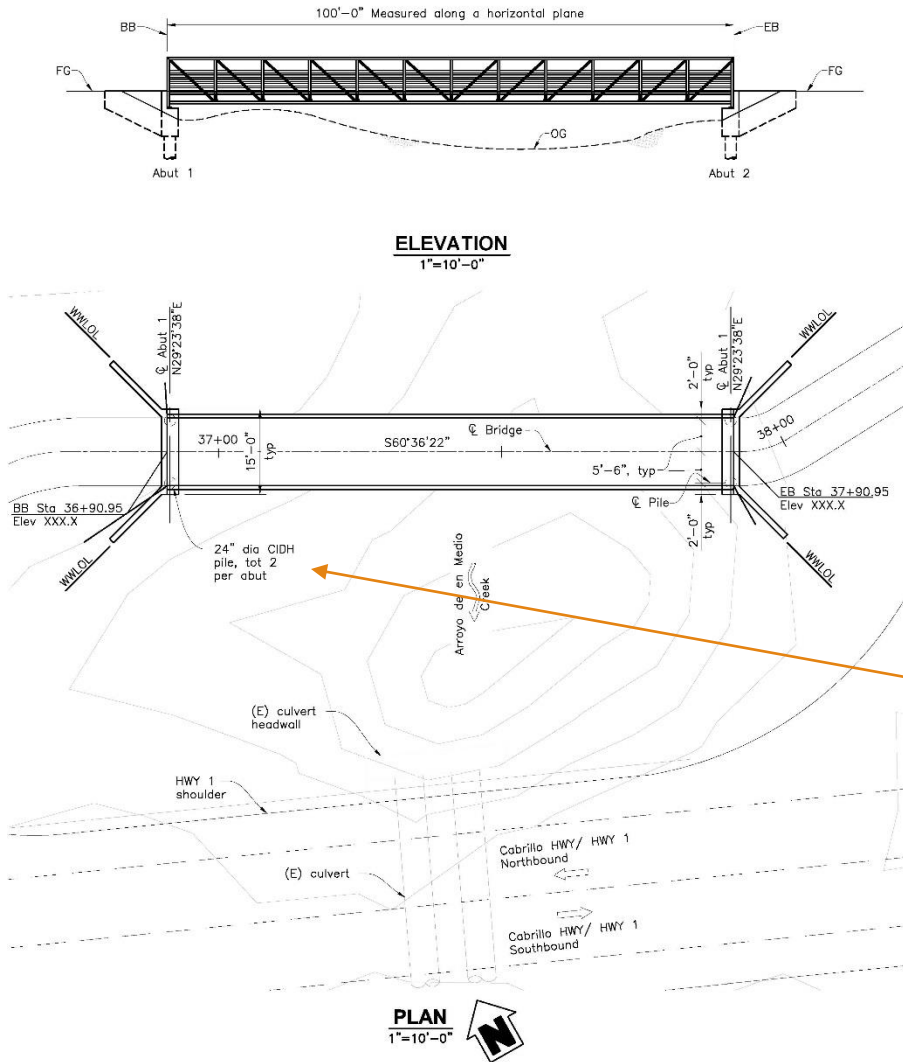
Note: For limits of paint, see "LIMITS OF CLEAN AND PAINT STEEL SOLDIER PILE" on RETAINING WALL DETAILS sheet.

Proposed Trail Alignment



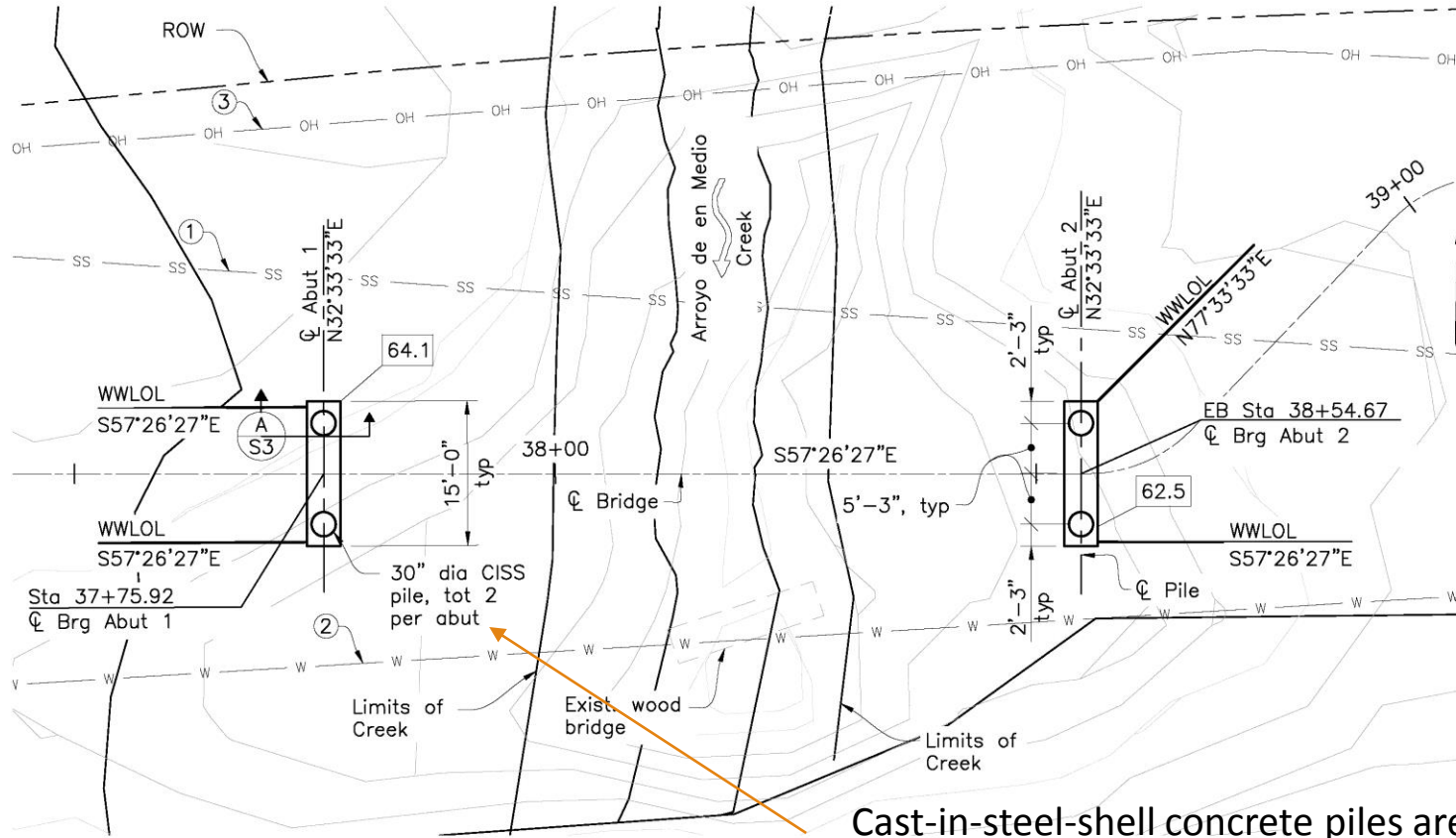
Pedestrian Bridge

Original Pedestrian Bridge Design



Cast-in-drilled-hole piles (CIDH piles) - a borehole is drilled into the ground, then concrete (and often some sort of reinforcing) is placed into the borehole to form the pile

Revised Pedestrian Bridge Design



PLAN
1"=10'-0"



Cast-in-steel-shell concrete piles are driven pipe piles that are filled with cast-in-place reinforced concrete no deeper than the shell tip elevation.

Environmental Review

- Initial Study is being revised.
- New Impacts:
 - Noise
 - Traffic
- Once revised, will be re-circulated

Questions?
