



**samTrans**



# SamTrans Coastside Services Midcoast Community Council



January 9, 2013

- **Coastside Service History**
- **Coastside Transportation Committee**
- **Service improvements to Route 17**
- **SamTrans Service Plan (SSP)**
- **Draft recommendations – Coastside Service**

# Coastside Service - History

samTrans

- **May 2000 - Route 15 pilot service augmented Route 17 by linking HMB and Pescadero.**
- **Fall 2002 - SamCoast created as a demand response service to better serve the remote & sparse South Coast population.**
- **Sep 2004 - Route 15 discontinued by District citing cost and productivity factors.**
- **Sep 2004 - HMB to Pescadero connection incorporated in Route 17.**
- **Route 17 operated with medium-duty body on chassis buses with limited seated/standee capacity.**

- **2006 Devil's slide major closure impacts travel patterns and traffic/delays on Hwy 1/92.**
- **Informal working group formed to look at options to reduce congestion, including access to HMB schools.**
  - **Cabrillo Unified, SamTrans, City of HMB, Coastside Hope, San Mateo County, Peninsula Traffic Congestion Relief Alliance**
- **Route 294 – temporary emergency supplemental service added to increase number of over the hill trips, plus Saturday/Sunday trips added. Supplemental service discontinued after Hwy 1 reopened.**
- **Working group decided to continue to meet to discuss potential solutions to improve transportation services.**

# Service Improvement to Route 17

samTrans

- **April 2006 - \$250k STA Lifeline funding received for Coastside service.**
- **Coastal Lifeline Transportation Needs Assessment completed November 2006**
- **Route 17 service improvements – July 2007:**
  - Service to Montara via Sunshine Valley Road
  - Added Sunday service
  - Extended daily service to 9 pm
  - Added additional school schedules (trippers)
  - Expedited new bus stop to serve Half Moon Bay High School

# Service Improvements to Route 17

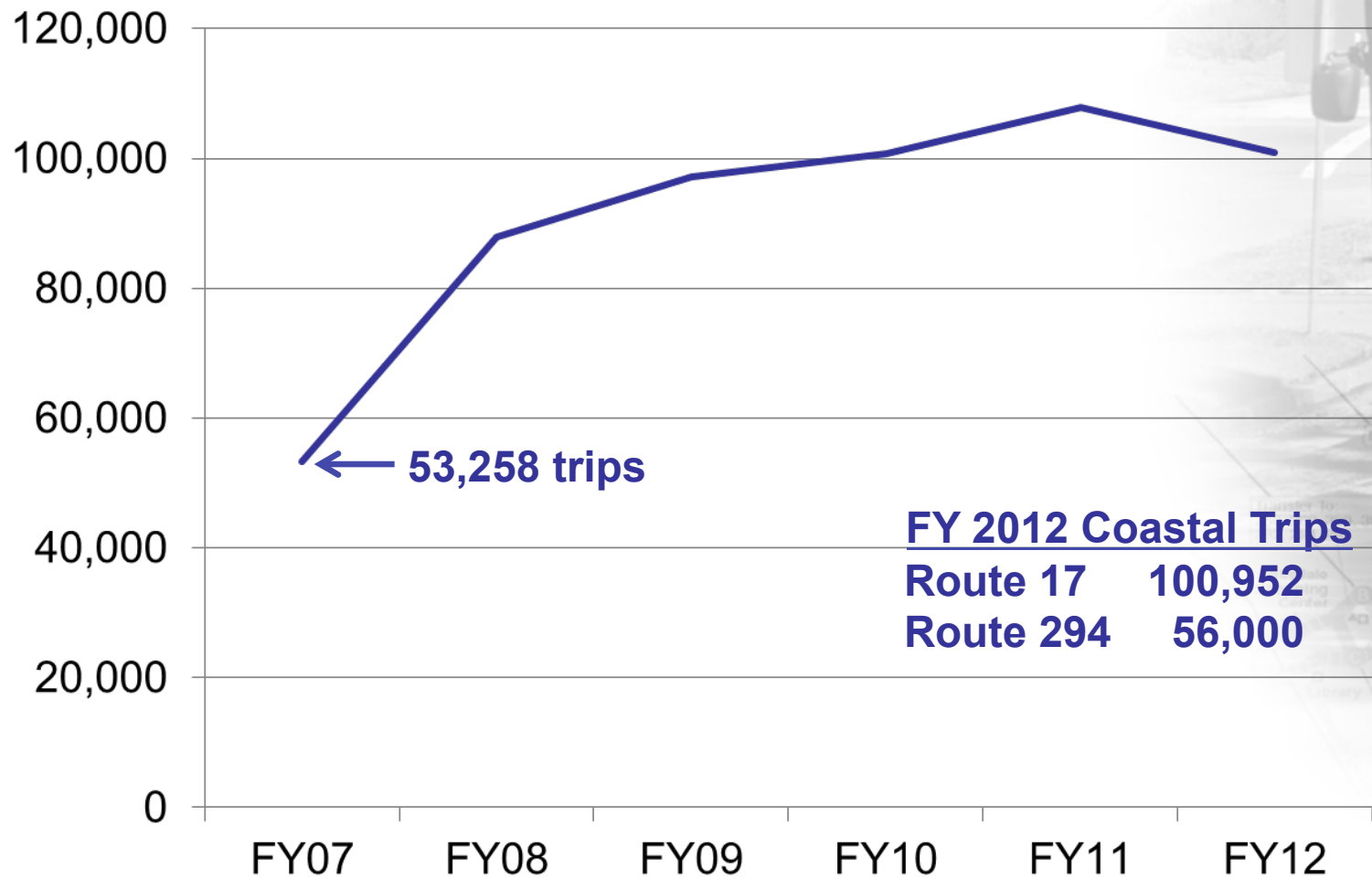
samTrans

- Feb 2010 - Introduction of 4 new 29-foot heavy-duty buses with increased seating and standee capacity
- STA \$407k lifeline grant for 3 years FY13 thru FY15, or \$135.7k per year.
- FY13 contract cost for Route 17 is \$647k.

# Ridership

samTrans

## Route 17



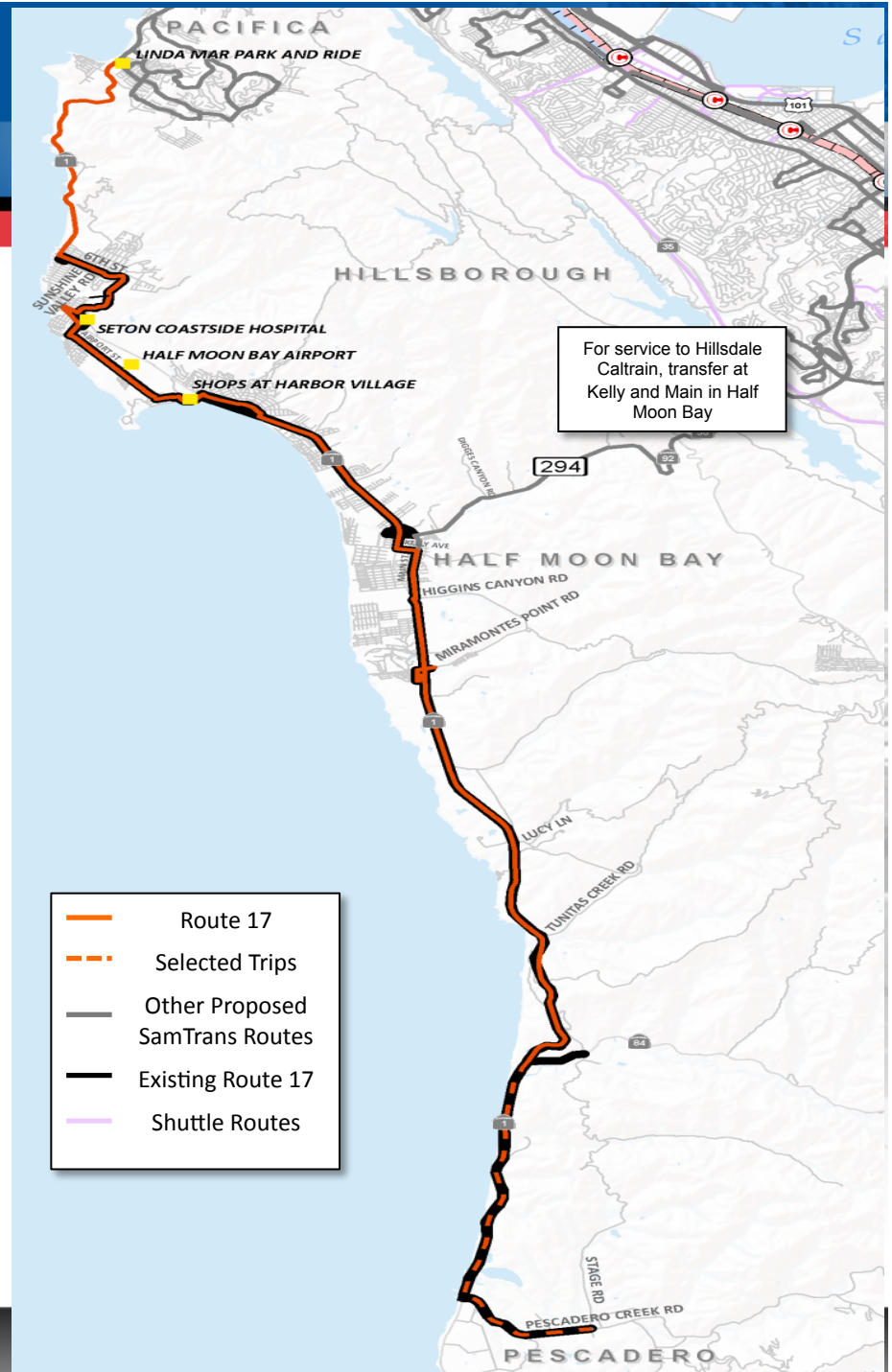
- **First in-depth study of SamTrans service since 1999 to:**
  - Understand service strengths and identify areas for improvement
  - Develop a road map for future SamTrans service
  - Build the most robust system of services possible within available resources
- **Transit District is facing an uncertain future**
  - Unresolved structural deficit
  - Loss of Federal and State funding
  - Declining ridership



- **SamTrans Service Plan (SSP) work began 2011**
  - Extensive data collection of existing system
  - Analysis of system efficiency and cost/trip by route
  - Draft service plan recommendations developed
  - Public outreach to discuss draft plan recommendations
- **Next steps**
  - Complete revisions to draft plan based on public and policy board feedback, release Final Draft Plan
  - Conduct formal Public Hearing on Final Draft Plan, receive additional public feedback
  - Board adoption of Final Plan with any adjustments
  - Implement service changes

# Route 17

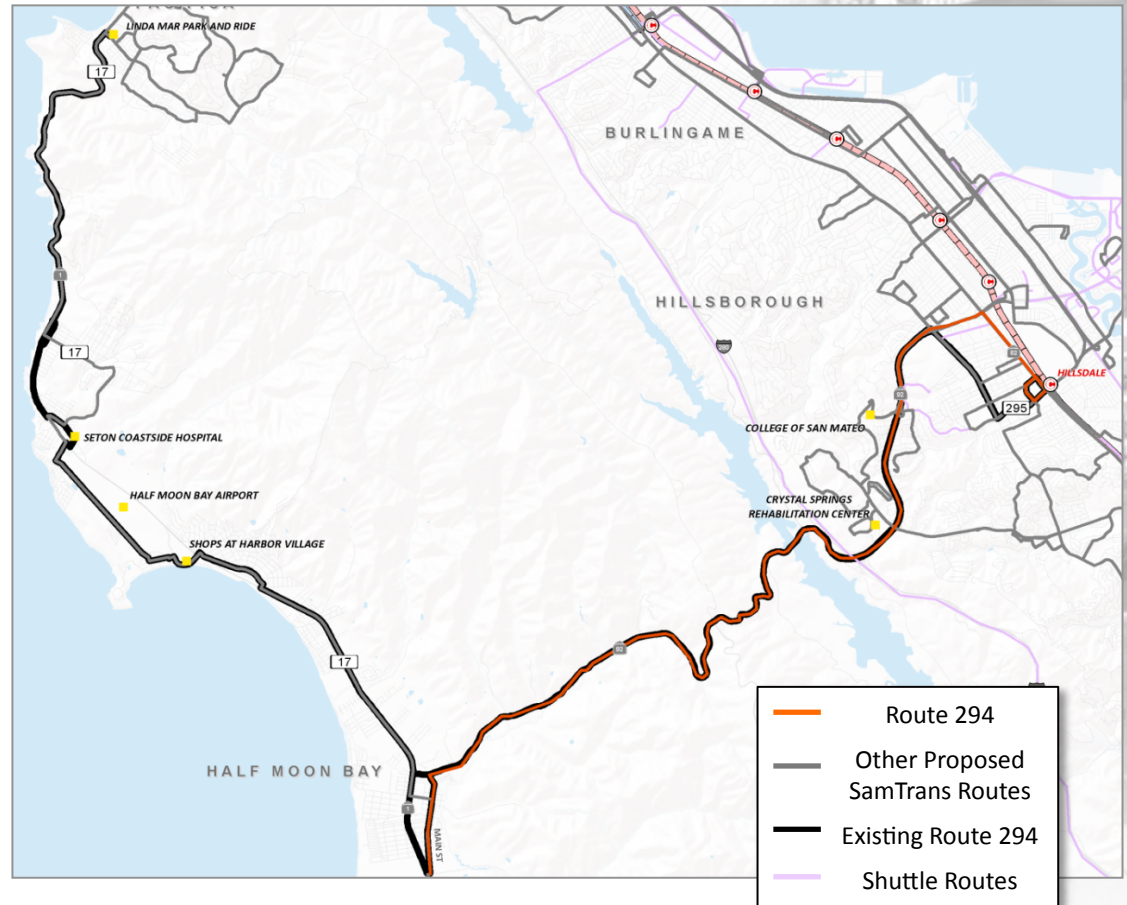
- **Route modifications**
  - Extend service north to Linda Mar Park & Ride 7 days a week
  - No proposed schedule changes



# Route 294

samTrans

- **Route Modifications**
  - Route will operate from Hillsdale to Half Moon Bay where riders can transfer to Route 17 (due to duplicative Coastside service)
  - Realigned to El Camino Real instead of Alameda de las Pulgas between Highway 92 and Hillsdale Shopping Center
- **Schedule Changes**
  - Improve weekday service frequency from approximately 120 minutes to 90 minutes
  - Add 90 minute Saturday/ Sunday service to provide weekend connection between coast and bayside



# SSP Proposal – Routes 17 and 294

**samTrans**

The logo for samTrans, featuring the text "samTrans" in a sans-serif font above a red horizontal bar, which is above a blue horizontal bar. The logo is set within a white rectangular border.

- **SSP team conducted public outreach presentation October 16 in Half Moon Bay**
- **Midcoast Community Council provided written comments to draft service plan to SSP team on November 12, 2012**
- **SSP team is considering MCC's comments as part of the development of the Final Draft Service Plan**
- **SamTrans representatives are here this evening to respond to any additional comments/questions**