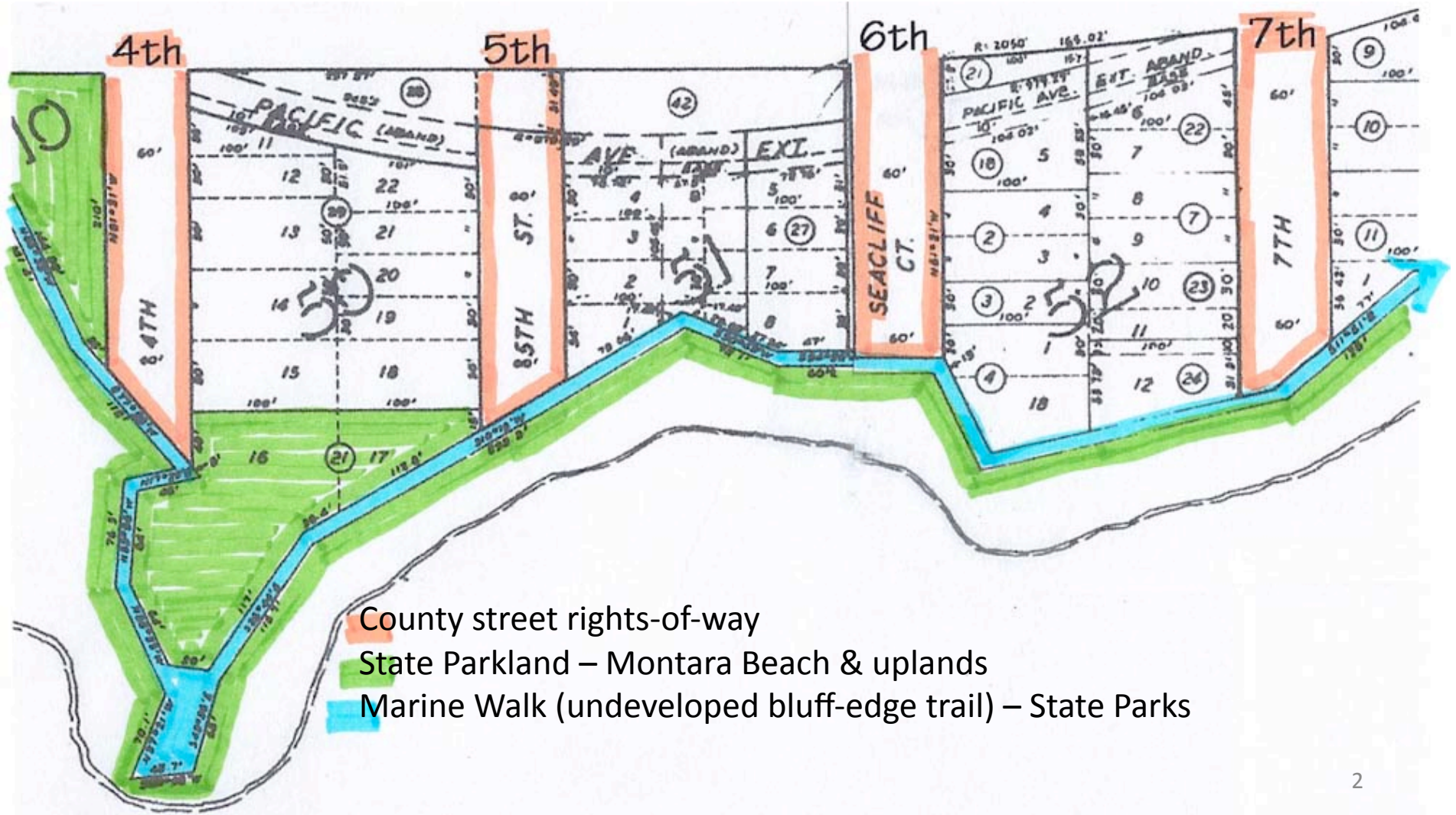


The coastline of Montara is varied & spectacular.  
Each street-end offers unique views.



By County Board of Supervisors' resolution in 1907, 4<sup>th</sup> thru 7<sup>th</sup> Streets were accepted "on behalf of the public as dedicated to public use." 4<sup>th</sup> & 5<sup>th</sup> are "paper streets". 6<sup>th</sup> (Seacliff) & 7<sup>th</sup> are county-maintained streets.

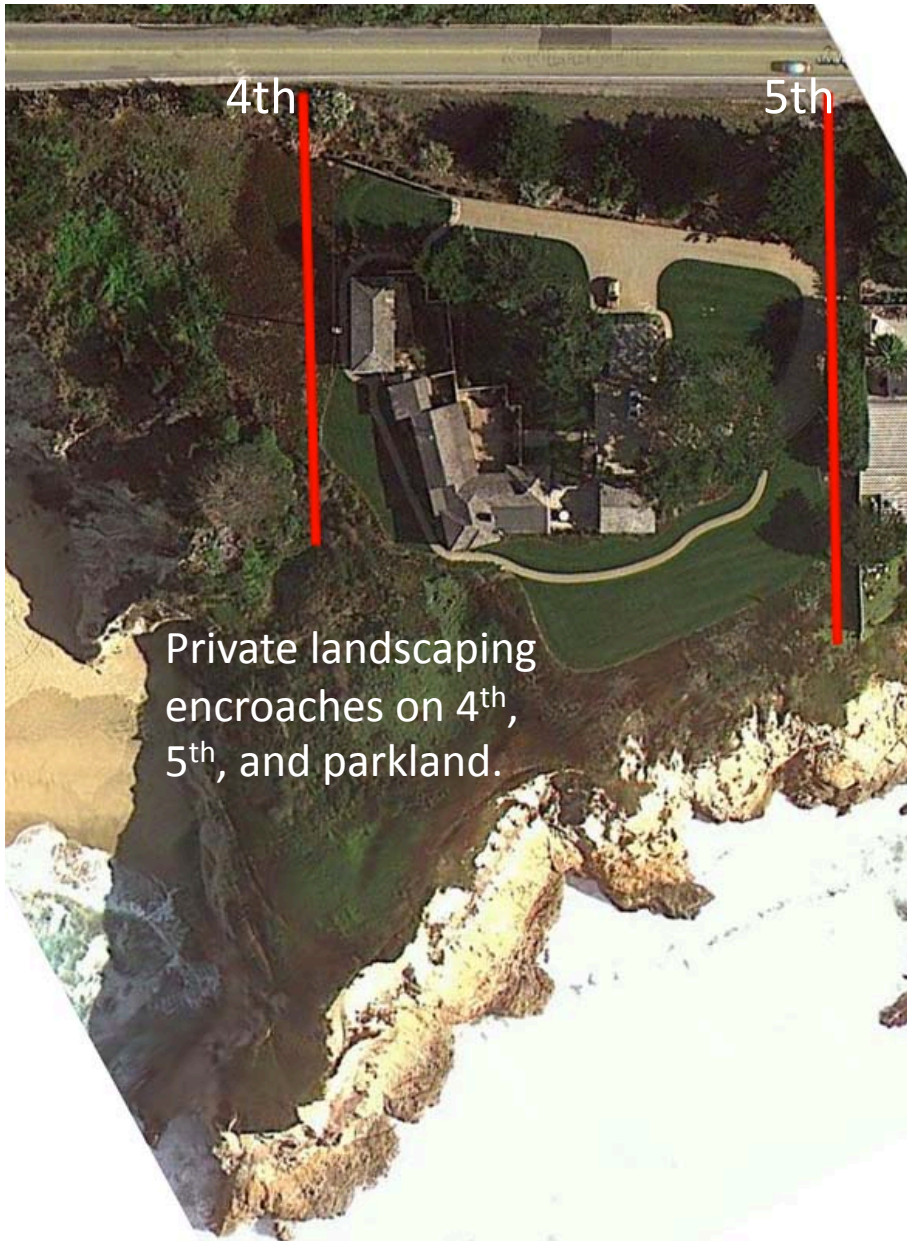




Upper 4<sup>th</sup> Street coastal views –  
Red outline indicates future blocked views by shrubs and trees  
planted across the 4<sup>th</sup> Street right-of-way.  
The County should not allow these encroachments.



4<sup>th</sup> & 5<sup>th</sup> are not county-improved streets, but these public rights-of-way must be preserved for non-motorized public access to the coastal bluff.







5<sup>th</sup> Street right-of-way provides level access from highway to coastal bluff. The County should not allow private property signage on this public right-of-way.



An aerial photograph showing a residential property on a steep, grassy cliffside. A long, dark wooden fence runs along the edge of the property. To the right, a house with a light-colored exterior and a balcony is visible. The word "Seacliff" is overlaid in white text in the center of the image.

# Seacliff

County has agreed to remove 5-ft wood fence  
at coastal end of Seacliff (6<sup>th</sup>)  
and install a guardrail instead.



Seacliff view peering over top of 5-foot fence





California Coastal Commissioner Steve Blank: “This is a public street. This public street is blocked off. This homeowner has been given a private gated part of the beach... Don’t we have an issue with the County about closing off a public street?”

Encroachment permits may be revoked at any time. The County agrees guard rails are needed for safety which the hedge and fence do not provide. Due to space constraints the fence and hedge must be removed in order to install the guardrails.



# Hidden coastline from 7<sup>th</sup> Street

