

When will the chipper be in my neighborhood?

Visit the SMC Fire safe website at www.firesafesanmateo.org to find out when the chipper will be in your neighborhood.

**Protect your home.
Create defensible space**



**FIRE SAFE
San Mateo
county**



**SAN MATEO
RESOURCE
CONSERVATION
DISTRICT**

80 Stone Pine Road
Half Moon Bay, CA 94019

For more information, visit:
www.firesafesanmateo.org

or contact us:
(650) 712-7765 x 115
fire@sanmateoRCD.org

This neighborhood chipper program is funded by San Mateo County through Measure K.

San Mateo Resource Conservation District

80 Stone Pine Road

Half Moon Bay, CA 94019



**FIRE SAFE
San Mateo
county**



**SAN MATEO
RESOURCE
CONSERVATION
DISTRICT**

NEIGHBORHOOD CHIPPER PROGRAM

YOU CUT IT—WE'LL CHIP IT



Prevent **CATASTROPHIC WILDFIRE** by
reducing the fuel load around your
home and neighborhood

CHIPPER PROGRAM

What is the Chipper Program?

The Chipper Program is a free wildfire prevention program to help decrease our community's threat from wildfire. Protect your home by creating fire safe defensible space. If you prune your woody vegetation, we'll dispose of it for you.

What can I do to help?

Stack your green waste materials such as branches and light brush at the roadside on your designated neighborhood day and we will take care of the rest.

When will the chipper be in my neighborhood?

Contact us or visit www.firesafesanteo.org to find out when the chipper will be in your neighborhood.



Turn this



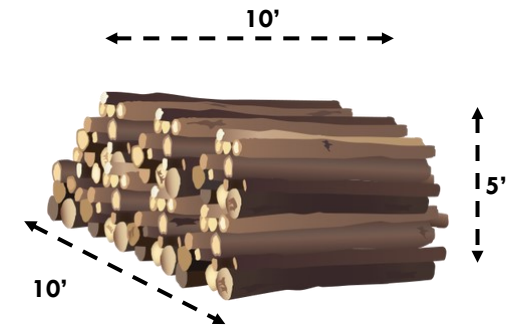
into this



before it becomes this.

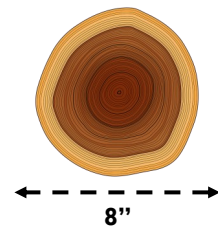


Size and Stacking



Vegetation should be piled along the roadside with all cut ends facing towards the street. Please limit your pile size to 10' wide by 10' long by 5' high. Please **do not** obstruct the roadway when stacking your material

What Kinds of Fuels can be chipped?



Light brush and **tree limbs** up to 8" can be chipped. Material **cannot contain** nails or screws, as they can damage equipment and endanger personnel. The chipper **cannot chip** Eucalyptus bark, vines, palm fronds, poison oak, or root balls. No lumber is allowed.

If piles contain prohibited items or are not stacked properly, they **WILL NOT** be chipped.