

National Park Service  
U.S. Department of the Interior  
Golden Gate National Recreation Area



# Midcoast Parks Forum



April 22, 2015

Christine FitzGerald, GGNRA San Mateo Coordinator

# Overview

- What we've been up to...
  - Trails/Maintenance
  - Resource Management
  - Stewardship
  - Planning
- Where we're headed...
  - Rancho Unit Management Plan

# TRAILS / Drainage improvements

San Vicente Trail, Moss Beach



Before



During



After

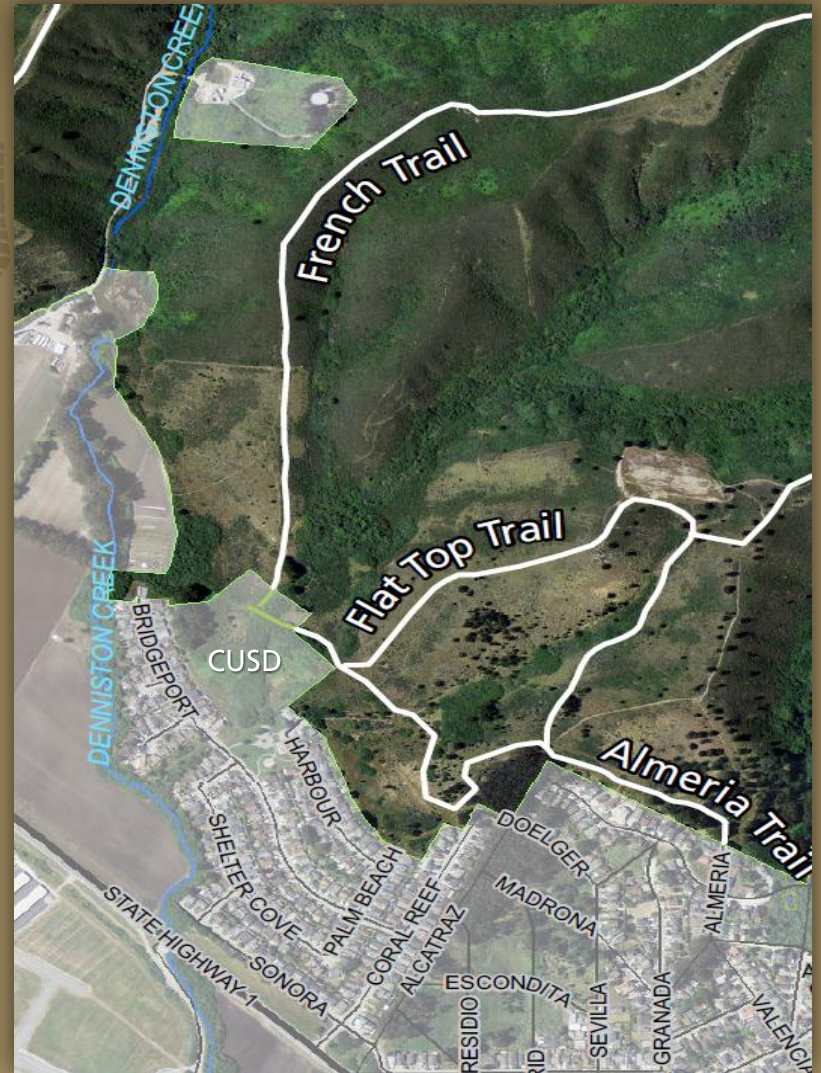
# TRAILS / Filling gullies

Alta Vista Trail, Montara



# TRAILS / Brushing

French Trail, El Granada



# TRAILS / Installing vehicle barriers



# TRAILS

- ☑ Completed mowing
- ☐ Preparing for summer SCA crew
- ☐ Preparing for National Trails Day 6/6/15



National Trails Day, Rancho 2014

# RESOURCES / Wildlife monitoring



Bushnell M SM-1 44°F6°C

03-18-2014 01:45:14



Bushnell M SM-1 46°F7°C

03-18-2014 20:17:44



Bushnell M SM-5 42°F5°C

03-17-2014 20:10:54



Bushnell M SM-3 50°F10°C

10-23-2014 01:52:20



# RESOURCES / Removing invasive plants



EXPERIENCE YOUR AMERICA

# RESOURCES / Planting native grasses



EXPERIENCE YOUR AMERICA

# RESOURCES / Lichen studies



EXPERIENCE YOUR AMERICA

# RESOURCES

- ☑ Mapping vegetation
- ☑ Monitoring CRLF & San Bruno elfin butterfly
- ☑ Leading hikes (Bay Nature, CGF)



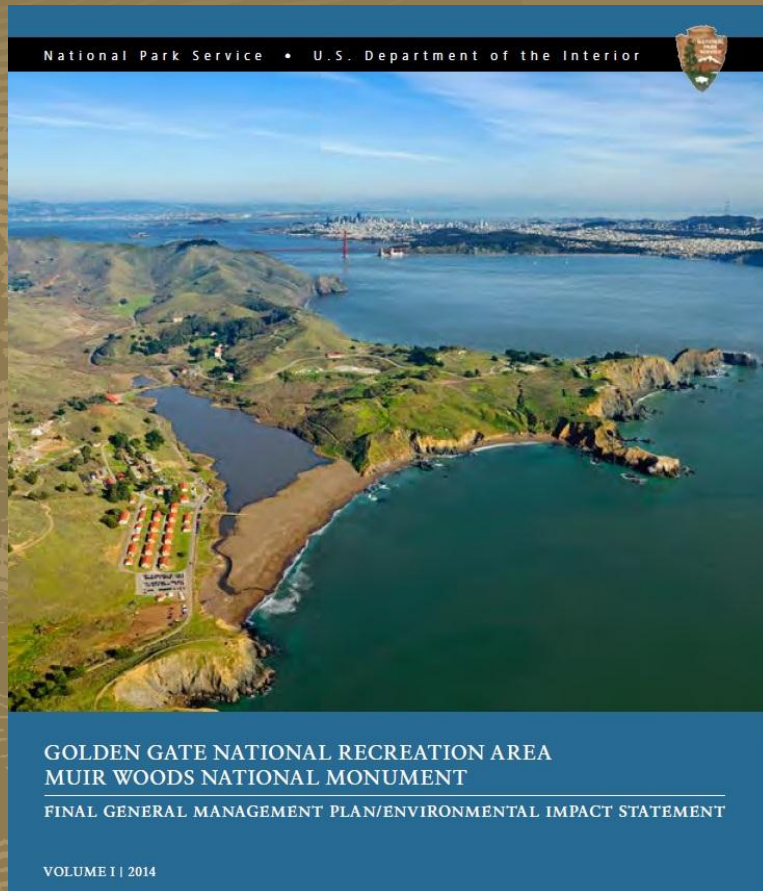
California red-legged frog,  
Montara

# STEWARDSHIP

- ☑ Hired new community programs manager, expanded scope to Rancho
- ☑ Monthly drop-in volunteer days – FIRST SATURDAYS
- ☐ Meeting with HEAL project to develop partnership/ summer camps
- ☐ Preparing for mini bioblitz



# PLANNING / Long-range planning & leadership

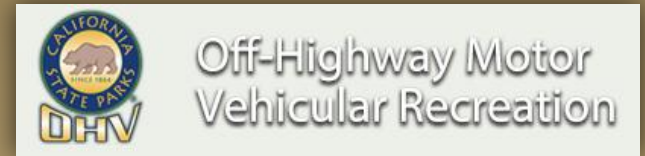


New General Superintendent  
Chris Lehnertz

GMP Record of Decision Signed

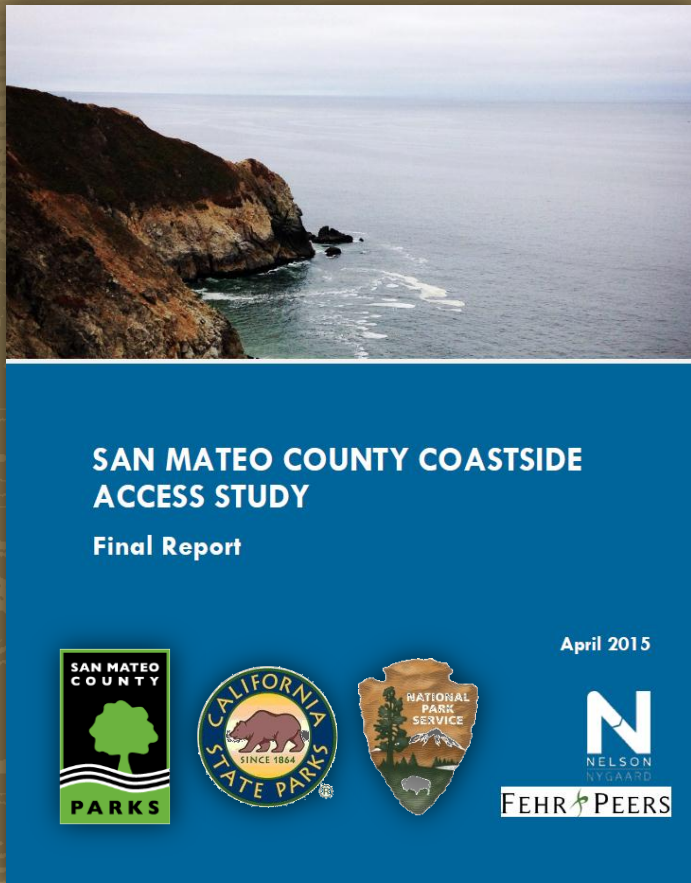
# PLANNING / Regional coordination

- ❑ Applying for OHV grant to address illegal motorcycle and vehicle use
- ❑ Coordinate with SFPUC for connections to Rancho via Peninsula watershed
- ❑ Portola trail planning



Portola route through Rancho

# PLANNING / Parking Demand Study



## PURPOSE

- Further Hwy 1 Safety & Mobility Study recommendations
- Evaluate parking demand for coastside destinations
- Inform GGNRA Rancho trailhead planning
- Consider opportunities to enhance access and minimize congestion



# PLANNING / Parking Demand Study

## SCOPE

- Review relevant studies
- Data collection
- Visitor & parking demand forecasts – 2030 & 2040
- Issues & Opportunities

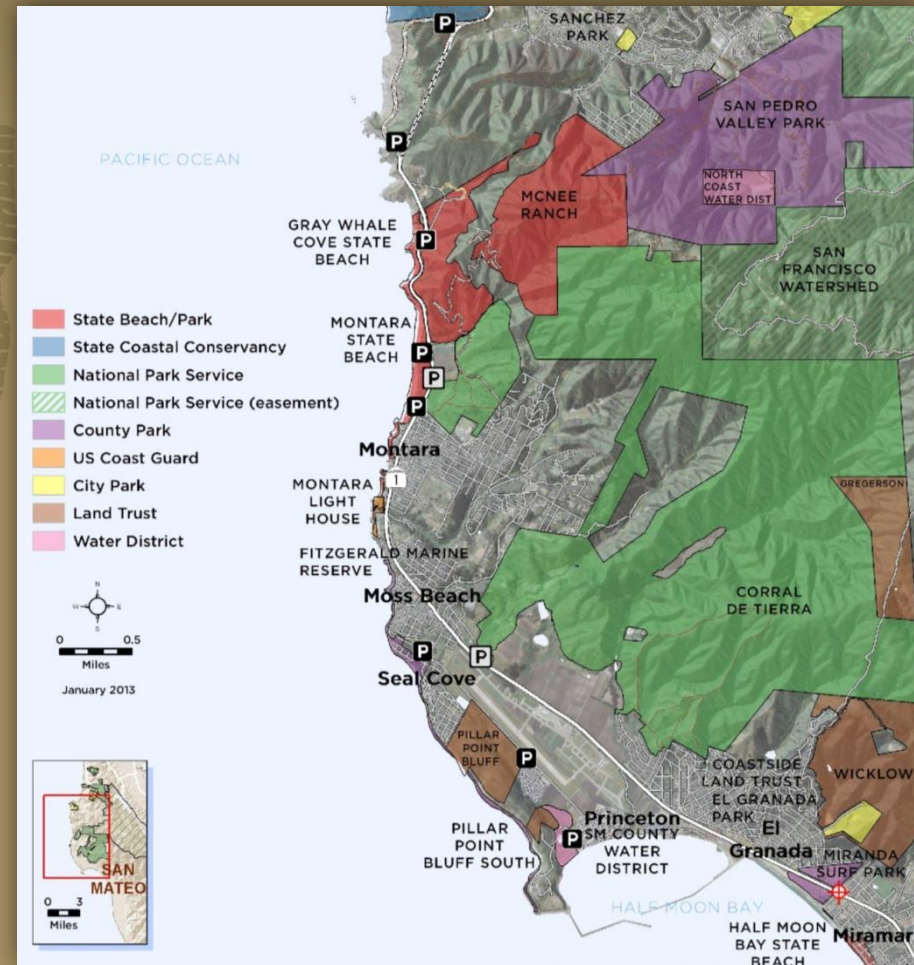


Table 3-11 Parking Demand Forecasts Summary

Parking Area	Formal Parking Capacity	Max Observed Parking Occupancy	Max Parking Occupancy Rate	2030 Forecast						2040 Forecast					
				Increase in Parking Demand by 2030		Total Forecast Parking Demand		Excess Demand for Formal Parking		Increase in Parking Demand by 2040		Total Forecast Parking Demand		Excess Demand for Formal Parking	
				Low	High	Low	High	Low	High	Low	High	Low	High	Low	High
<b>Study Area Public Lands Total</b>	<b>396</b>	<b>423</b>	<b>107%</b>	<b>12%</b>	<b>62%</b>	<b>473</b>	<b>686</b>	<b>77</b>	<b>290</b>	<b>19%</b>	<b>126%</b>	<b>504</b>	<b>956</b>	<b>108</b>	<b>560</b>
Devil's Slide	39	48	123%	16%	130%	55	110	16	71	27%	300%	61	192	22	153
Gray Whale Cove	107	88	82%	15%	128%	101	200	(6)	93	24%	259%	109	316	2	209
Montara State Beach and McNee Ranch	113	155	137%	15%	31%	178	203	65	90	24%	52%	192	236	79	123
Point Montara Light Station	25	12	48%	15%	146%	14	29	(11)	4	24%	305%	15	49	(10)	24
Fitzgerald Marine Reserve/Pillar Point Bluff	89	101	113%	2%	2%	103	103	14	14	2%	2%	103	103	14	14
Rancho Corral De Tierra	0	13	NA	15%	105%	15	27	15	27	24%	206%	16	40	16	40
Quarry+Wicklow +Mirada Surf	23	6	26%	13%	108%	7	12	(16)	(11)	22%	228%	7	20	(16)	(3)

# PLANNING / Parking Demand Study

## NEXT STEPS

- Collect additional data at key sites in 2015
- Monitor changes in use
- Enhance alternative modes
- Evaluate shared parking options
- Consider new parking as part of Rancho Plan

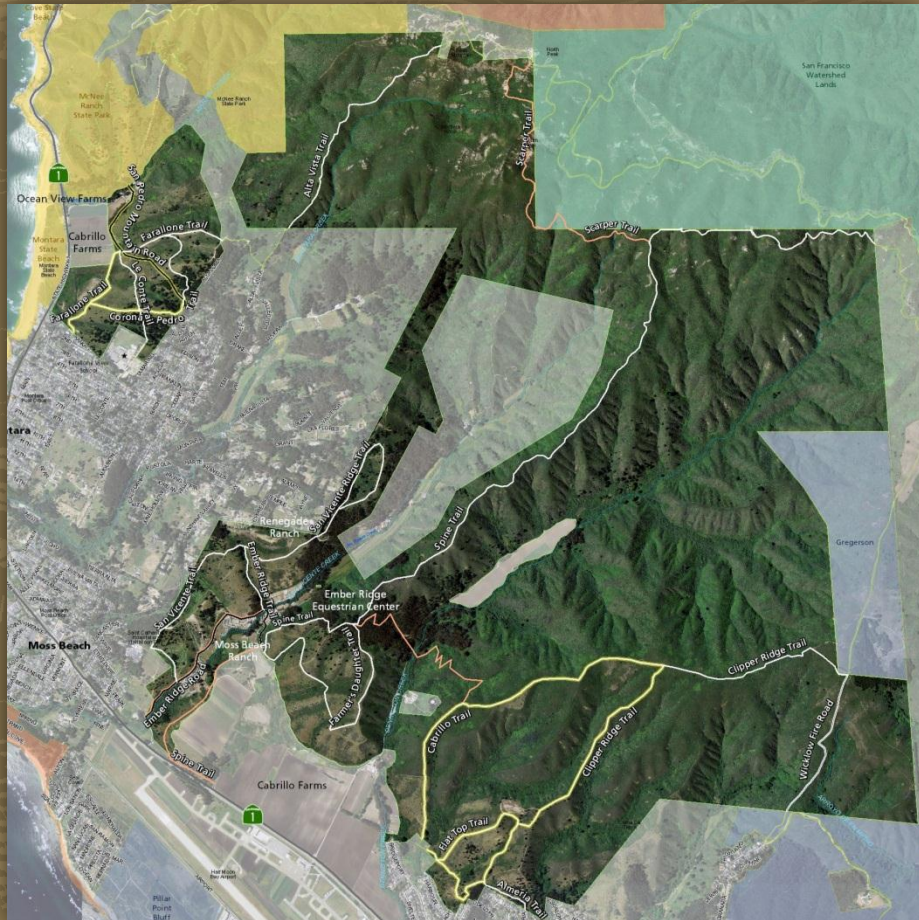
# Where we're headed...

- National Trails Day 6/6
- Centennial Planning
- Rancho Unit Management Plan



# Rancho Unit Management Plan

What will be included in the Plan?



- Trails  
*Removing old, adding new*
- Amenities  
*Restrooms, parking, benches, trash, signage*
- Resources  
*Vegetation management*
- Equestrian  
*Operations in leased areas*
- Maintenance  
*Long-term sustainability*

# Rancho Unit Management Plan

DRAFT schedule  
(subject to change)



# Rancho Unit Management Plan

## What's next?

- Walks & talks
- Monthly volunteer days
- Evening neighborhood get-togethers
- Meetings with stakeholders & agencies
- Initiate Mind Mixer



# Golden Gate National Recreation Area

Christine FitzGerald  
415-561-4745  
[cfitzgerald@nps.gov](mailto:cfitzgerald@nps.gov)



National Park Service  
U.S. Department of the Interior