



Midcoast

California Coastal Trail – Pillar Point to Montara Beach

Update – 5/8/2013

<div style="text-align: center;"> <h3>California Coastal Trail San Mateo County Midcoast Pillar Point to Mirada Surf</h3> <p>Trails Team – Midcoast Parks and Recreation Committee Final Report May 1, 2010</p> </div>  <div style="margin-top: 20px;"> <p>Table of Contents</p> <ul style="list-style-type: none"> Introduction..... 2 The Project: Pillar Point to Mirada Surf..... 3 <ul style="list-style-type: none"> Pillar Point to Denniston Creek..... 4 Denniston Creek to Boat Launch Ramp..... 8 Boat Launch Ramp to Mirada Surf..... 11 Appendix..... 12 </div>	<div style="text-align: center;"> <h3>California Coastal Trail San Mateo County Midcoast Pillar Point to Montara Beach</h3> <p>CCT Committee – Midcoast Community Council Draft Report – Not for Distribution April 30, 2013</p> </div>  <p style="text-align: center; font-size: small;">The PP-FMR Walkable Coastline Trail (to be edited in)</p> <div style="margin-top: 20px;"> <p>Table of Contents</p> <ul style="list-style-type: none"> Introduction..... 2 Overview..... 3 <ul style="list-style-type: none"> Pillar Point to Fitzgerald Marine Reserve – The Midcoast Walkable Coastline Trail..... 4 Moss Beach – Fitzgerald Marine Reserve to Lighthouse..... 9 Montara – Main Street to the State Beach..... 11 Montara State Beach..... 12 Highway 1 – Crossings and Roadside Safety..... 12 Appendix A – Local Coastal Program and the CCT..... 14 Appendix B – CCT – Midcoast Community Council – 2001..... 15 </div>
--	---

Primary Content for Each Section

- Route
- Issues – Joint focus
- Issues – Divided focus
- Parking
- Signage
- Vertical Coastal Access
- Jurisdiction / Responsibility

Midcoast CCT and other CCT Segments

CCT – old Highway 1 roadbed converted to linear park

CCT through agency lands to tunnel south portal

CCT from north portal to Pacifica beaches

CCT along HMB and extension to FMR

Covering the bluffs, coves and beaches of the Midcoast

Midcoast LCP and CCT Objectives

- (a) Provide a continuous walking and hiking trail as close to the ocean as possible
- (b) Provide maximum access for a variety of non-motorized uses by utilizing alternative trail segments where feasible
- (c) Maximize connections to existing and proposed local trail systems
- (d) Ensure that the trail has connections to trailheads, parking areas, interpretive kiosks, inland trail segments, etc., at reasonable intervals
- (e) Maximize ocean views and scenic coastal vistas

Issues affecting CCT definition in the Midcoast

- The trail objectives and the nature of the Midcoast must deal with continuing change of the coast profile:
 - Eroding Coastline
 - Graceful Retreat
 - Fixed Property Lines
 - Rolling Easements

Conflicitng Views: Where to put the trail

- As far from the eroding coast as possible
- Near the bluff edge for best views

Conflicting Views: What type of trail

- Heavily improved, multi-use
- As natural as possible

MCC CCT Reset – Primary Community Focus

Highway 1 Crossing and
Roadside Trails

Montara State Beach

West Moss Beach and
Vallemar Bluffs

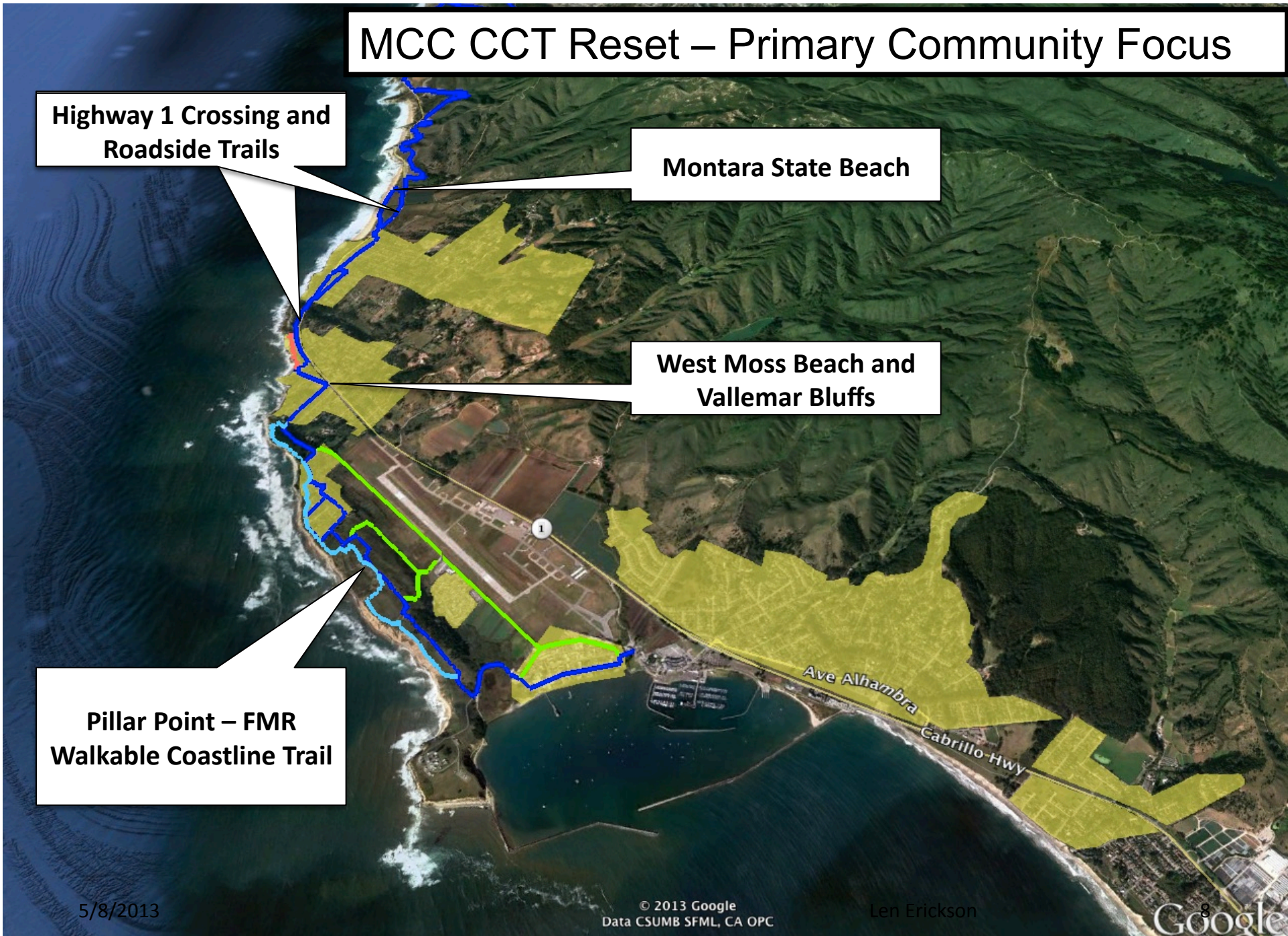
Pillar Point – FMR
Walkable Coastline Trail

5/8/2013

© 2013 Google
Data CSUMB SFML, CA OPC

Len Erickson

Google



SMC Parks – Change of Management

- Prior to change – presentation of the Midcoast CCT was the joint responsibility of
 - Assistant Director of Planning
 - Director of DPW and Parks
- Going forward
 - Temporary Parks Director (next four months)
 - Permanent Parks Director

MCC CCT Committee

- Focus – Pillar Point to Fitzgerald Marine Reserve
 - The Walkable Coastline Trail
 - The California Coastal Trail
- Timing for Bringing to the MCC
 - Establish a framework with SMC Parks
 - Four to six months for MCC readiness

Midcoast

The Walkable Coastline Trail - California Coastal Trail (2 Minute Slide Show)



Remaining Three Areas – MCC Approach

- West Moss Beach / Vallemar Bluffs
 - Report by MCC members
- Highway 1 Crossing and Roadside Trail Issues
 - Highway 1 Crossing at Lighthouse
 - Higher priority by County
 - Request action from Caltrans
 - Caltrans –
 - Old Main Street section in Highway 1 ROW
 - Safe bicycle lanes throughout Midcoast
 - Walking trail in ROW west of Highway 1 (Montara SB)
 - Related Agencies (SMC DPW, CA State Parks, GGNRA)
- Montara State Beach
 - Report by MCC Members together with State Parks

Other Related CCT Topics

- Comprehensive CCT Coastal Access Document
 - MCC member
- Midcoast Parking Study
 - Led by GGNRA – Next report in Summer
- Midcoast CCT South
 - Three projects – periodic reports from SMC Parks
- Transit Shuttle Opportunities
 - ?? Assess near term opportunities from Pacifica test
- Trails North of Montara State Beach
 - SMC Parks Responsibility – MCC Website links