



COVID-19 Vaccination Roll-out Update



SAN MATEO
COUNTY HEALTH

All together better.

Louise Rogers, Chief of Health, February 24, 2021

Guiding Principles

A safe and effective COVID-19 vaccine is one of the most important interventions to end the COVID-19 pandemic.

In active partnership with the state and federal government, San Mateo County Health is committed to being **safe**, **transparent**, and **equitable** in providing COVID-19 vaccines to everyone who needs and requests vaccination

Safety, Transparency, Equity



Ensuring equitable distribution of the vaccine

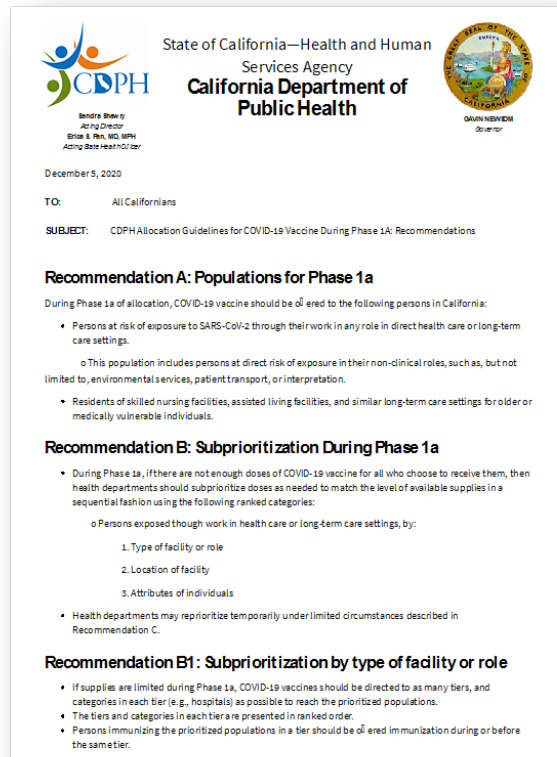
As we learn the timeline and federal and state guidance on the approach for distribution to the general public, we expect to tailor the outreach and the distribution strategy to assure reaching the most vulnerable communities, acknowledging the troubling history of health care research in communities of color. For community-wide vaccine distribution, we have developed a seven-point framework to guide our overall approach:

- 1) Provide transparency in the science, data, and vaccination process.
- 2) Prioritize those that shoulder the most risk.
- 3) Acknowledge explicitly the negative and painful history of health care in the US in communities of color and current health inequities that have led to distrust in healthcare, research, and government.
- 4) Engage community and stakeholders to better understand their concerns and needs and respond to concerns and needs as much as possible.
- 5) Communicate effectively in culturally sensitive ways through trusted partners.
- 6) Overcome as many barriers to accessing the vaccine as possible – geographic, linguistic, cultural, physical, technological, documentation, mistrust, and more.
- 7) Learn and improve as we go.



Who will be able to get a COVID-19 Vaccine?

Eventually there will be enough vaccine for everyone who lives in San Mateo County, and we are laying the foundation now to make access as easy as possible.

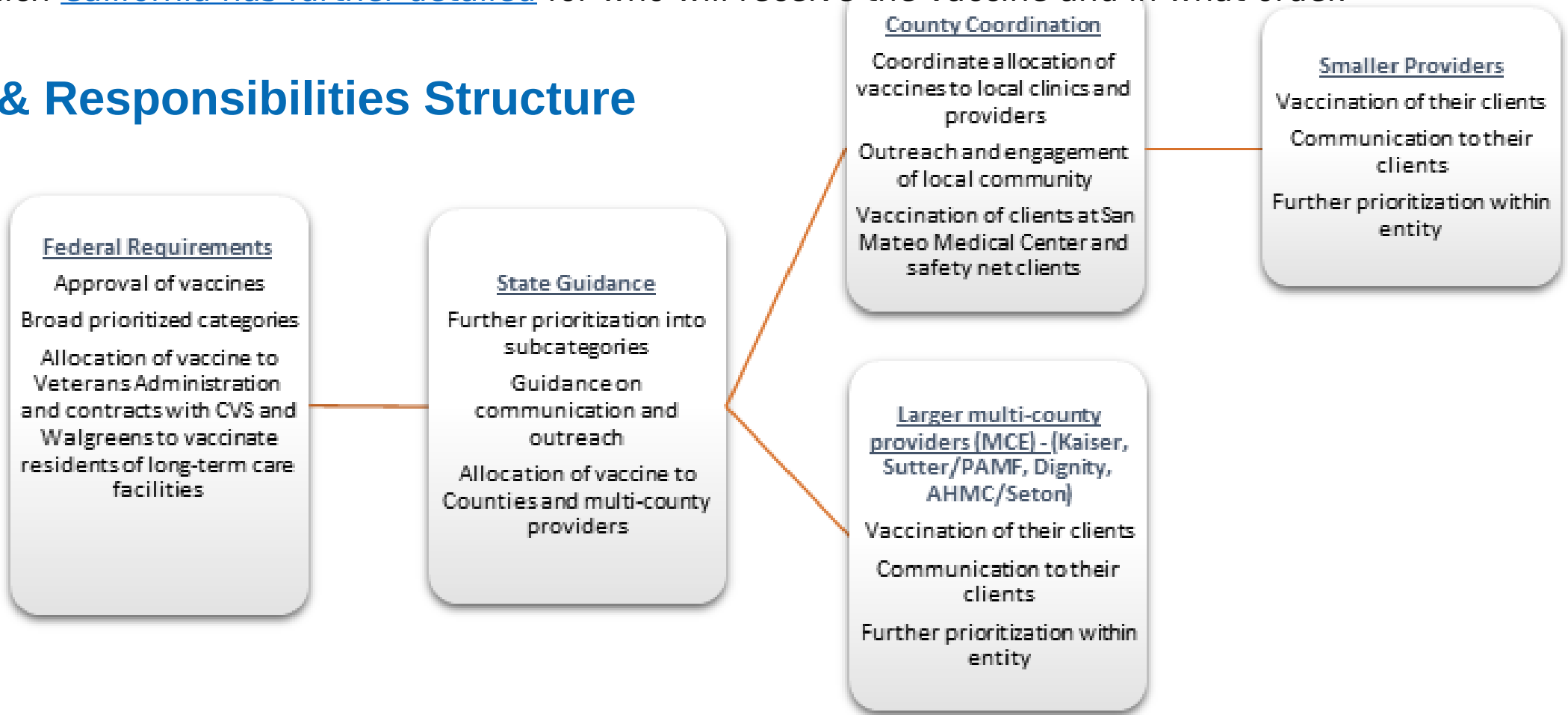


Because initial vaccine supplies are limited, [the federal government has created guidance](#), which [California has further detailed](#) for who will receive the vaccine and in what order.

Decision making authority: Who will be able to get a COVID-19 Vaccine?

- Eventually there will be enough vaccine for everyone who lives in San Mateo County, and we are laying the foundation now to make access as easy as possible.
- Because initial vaccine supplies are limited, [the federal government has created guidance](#), which [California has further detailed](#) for who will receive the vaccine and in what order.

Roles & Responsibilities Structure



Supply constraints: Who will be able to get a COVID-19 Vaccine and What do we need to do in the meantime?

- Eventually there will be enough vaccine for everyone who lives in San Mateo County but vaccine supply constraints impose need for prioritization
- State expansion of eligibility has not been accompanied by increases in vaccine supply
- Vociferous advocacy for groups to be at the “front of the line” as well as advocacy to maximize vaccine supply coming to California and San Mateo County
- Federal and State guidance has relayed that vaccinating educators does not need to precede in

Supply constraints: Who will be able to get a COVID-19 Vaccine and What do we need to do in the meantime?

- We have to keep protecting ourselves and each other through the essential mitigation actions

San Mateo County continues to make progress in reducing the spread of COVID-19, but we still need to take steps to protect public health.

Keep yourself, your loved ones, and your community safe by:



- WEARING A FACE COVERING
- STANDING AT LEAST SIX FEET APART
- AVOIDING GATHERINGS OF PEOPLE
- WASHING YOUR HANDS
- RESPONDING TO CALLS OR TEXTS FROM CONTACT TRACERS
- GETTING TESTED



- And, we have to build trust in getting vaccinated when its our turn...

Timeline



- Phase 1a
- Phase 1b

- To Be Determined

- General Public



Now- April

March- June?

June – September?

Estimated Timeframes

Federal officials continue to expect most residents eligible to be vaccinated to be offered the vaccine by the Fall

Who is able to get a COVID-19 Vaccine now*?

San Mateo County Health is prioritizing our limited supply of vaccine for members of Phase 1A and 1B, Tier 1 groups:

- **Healthcare Workers**

Estimated at 48,000 people in San Mateo County

- **Residents in Long Term Care Facilities**

Estimated at 12,000 people in San Mateo County

- **Older adults age 65+**

Estimated at 130,000 people in San Mateo County

- **Essential workers in education, child care, emergency services, food/ agriculture**

Estimated at 37,000 people in San Mateo County

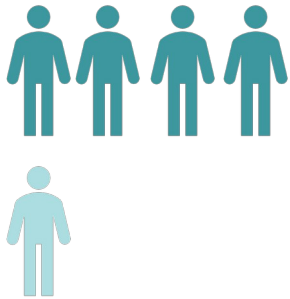
**SMC eligibility effective February 22nd, 2021*



**SAN MATEO
COUNTY HEALTH**
All together better.

Phase 1a

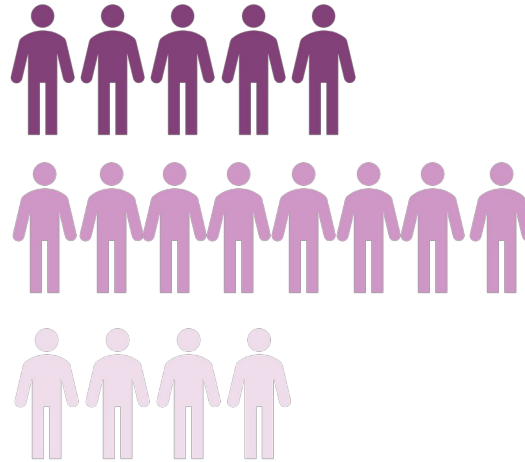
- Health Care Workers & medical first responders
- Long Term Care Residents



[60,000]

Phase 1b

- Adults 65+
- Essential workers in:
 - Teachers and School Staff
 - Childcare workers
 - First Responders
 - Food + Agriculture

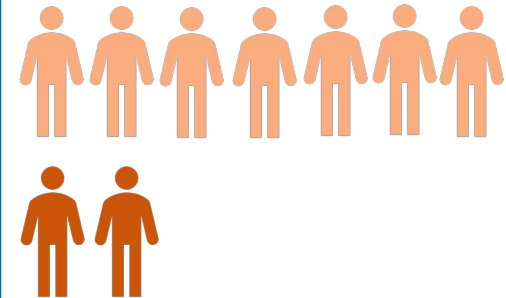


[167,000]

Next Phase

- Adults with significant chronic medical conditions

<https://www.cdph.ca.gov/Programs/CID/DCDC/Pages/COVID-19/VaccineAllocationGuidelines.aspx>



[TBD]

Where will residents be able to get vaccinated?

- Vast Majority of People - Existing healthcare provider
 - Kaiser, Dignity Health, PAMF/Sutter, AHMC/Seton
 - Northeast Medical Services, San Mateo Medical Center Clinics including Coastside, Ravenswood, local providers
- Providers are reaching out to their clients/patients on process for vaccination
- Mass sites sponsored by the County and other health care providers
- Some pharmacies including the federal partnership pharmacies 5 Rite Aids in Pacifica (2), Half Moon Bay, San Mateo and Redwood City and CVS in Daly City and Redwood City; other pharmacies being considered including Safeway in HMB
- Targeted small-scale local venues with partners including those targeted to farm/ag workers
- Residents of Long-term care facilities - Walgreens/CVS/Safeway
- Veterans - Veterans Administration

How should San Mateo County residents stay updated about available pathways?

- Sign up to be notified by State via MyTurn and County when you are eligible and there is opportunity to be vaccinated
<https://www.smchealth.org/covidvaccine>
- Continue to check with your healthcare provider if you are connected to one of the large systems
- You will see an additional link on this site to complete a form to “Receive Notification When You Are Eligible”.
 - We learned Friday that San Mateo County will be onboarded to the State “My Turn” platform in “wave 3”, slated for March 15
 - Until then, we will use our local form for outreach for upcoming vaccination opportunities

Tracking SM County's vaccination progress

Total individuals vaccinated
136,875
as of
2/23/2021
County Population: **780,273**
County Population 16+ years: **642,340**
%16+ years Vaccinated: **21.3%**

Date Administered from
1/4/2020 2/23/2021

Individuals Who Completed Vaccination Series
51,275

% Completed Vaccination Series
0.0% 37.5% 100.0%

COVID 19 Vaccinations of San Mateo County Residents

Age	Total Individuals Vaccinated	% of Individuals Vaccinated	Total Completed Vaccination Series	% of Vaccination Series Completed
16-24	2,873	2.1%	1,388	2.7%
25-34	11,406	8.3%	6,809	13.3%
35-44	13,821	10.1%	8,332	16.2%
45-54	14,064	10.3%	8,370	16.3%
55-64	14,082	10.3%	7,808	15.2%
65-74	42,710	31.2%	7,600	14.8%
75-84	26,429	19.3%	7,368	14.4%
85+	11,490	8.4%	3,600	7.0%
Total	136,875	100.0%	51,275	100.0%

Gender	Total Individuals Vaccinated	% of Individuals Vaccinated	Total Completed Vaccination Series	% of Vaccination Series Completed
Female	81,692	59.7%	32,443	63.3%
Male	55,104	40.3%	18,810	36.7%
Unknown	79	0.1%	22	0.0%
Total	136,875	100.0%	51,275	100.0%

Race/Ethnicity	Total Individuals Vaccinated	% of Individuals Vaccinated	Total Completed Vaccination Series	% of Vaccination Series Completed
American Indian / Alaska Native	160	0.1%	27	0.1%
Asian	28,522	20.8%	10,229	19.9%
Black / African American	1,665	1.2%	475	0.9%
American Hispanic	11,295	8.3%	3,623	7.1%
Multiracial	24,241	17.7%	13,901	27.1%
Native Hawaiian / Pacific Islander	826	0.6%	332	0.6%

Vaccinated Individuals by Age

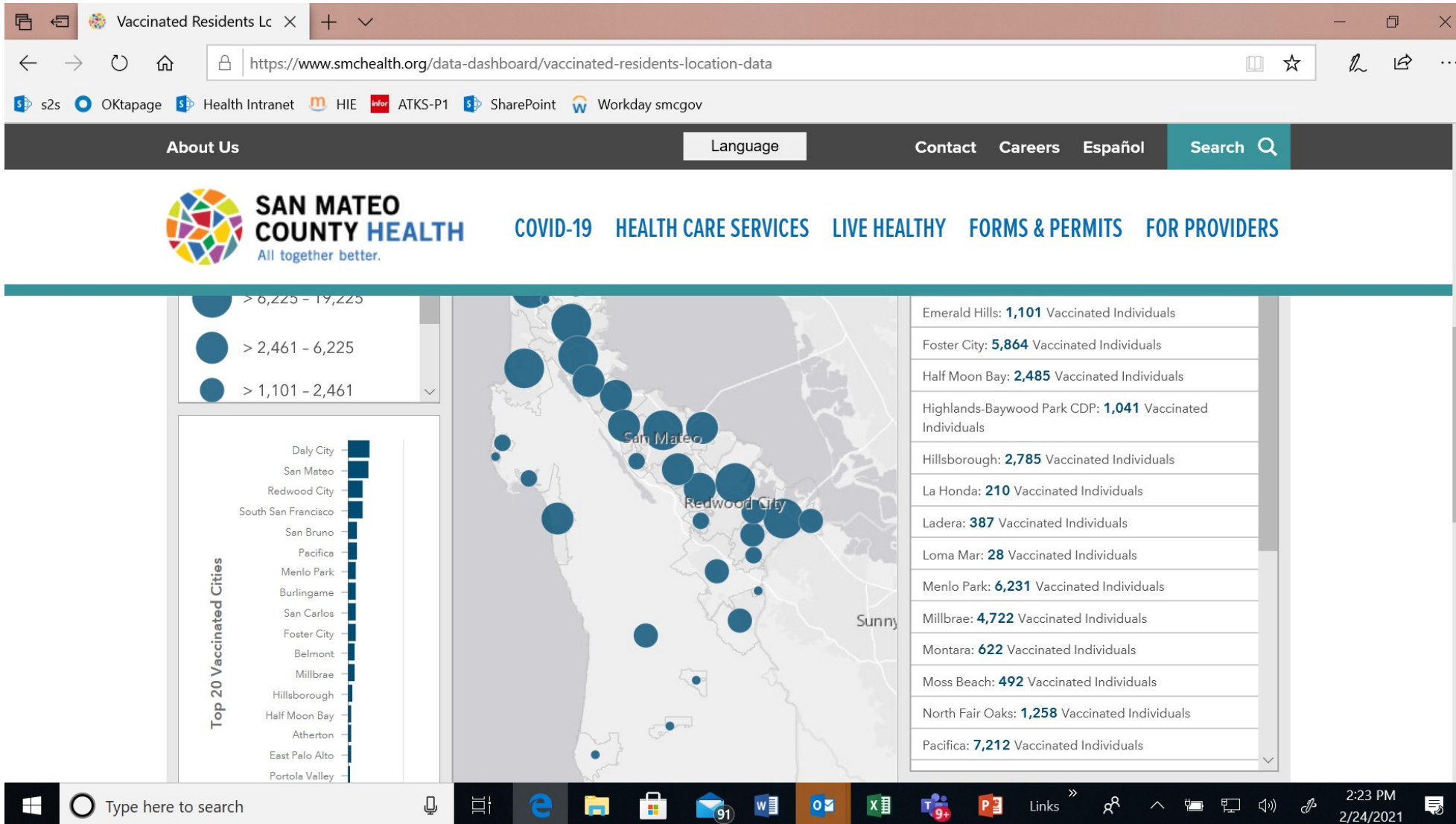
Vaccinated Individuals by Gender

Vaccinated Individuals by Race/Ethnicity

**Updated:
2/23/21**

*Can be found online
at: smchealth.org/data-dashboard/vaccination-totals-locations-data*

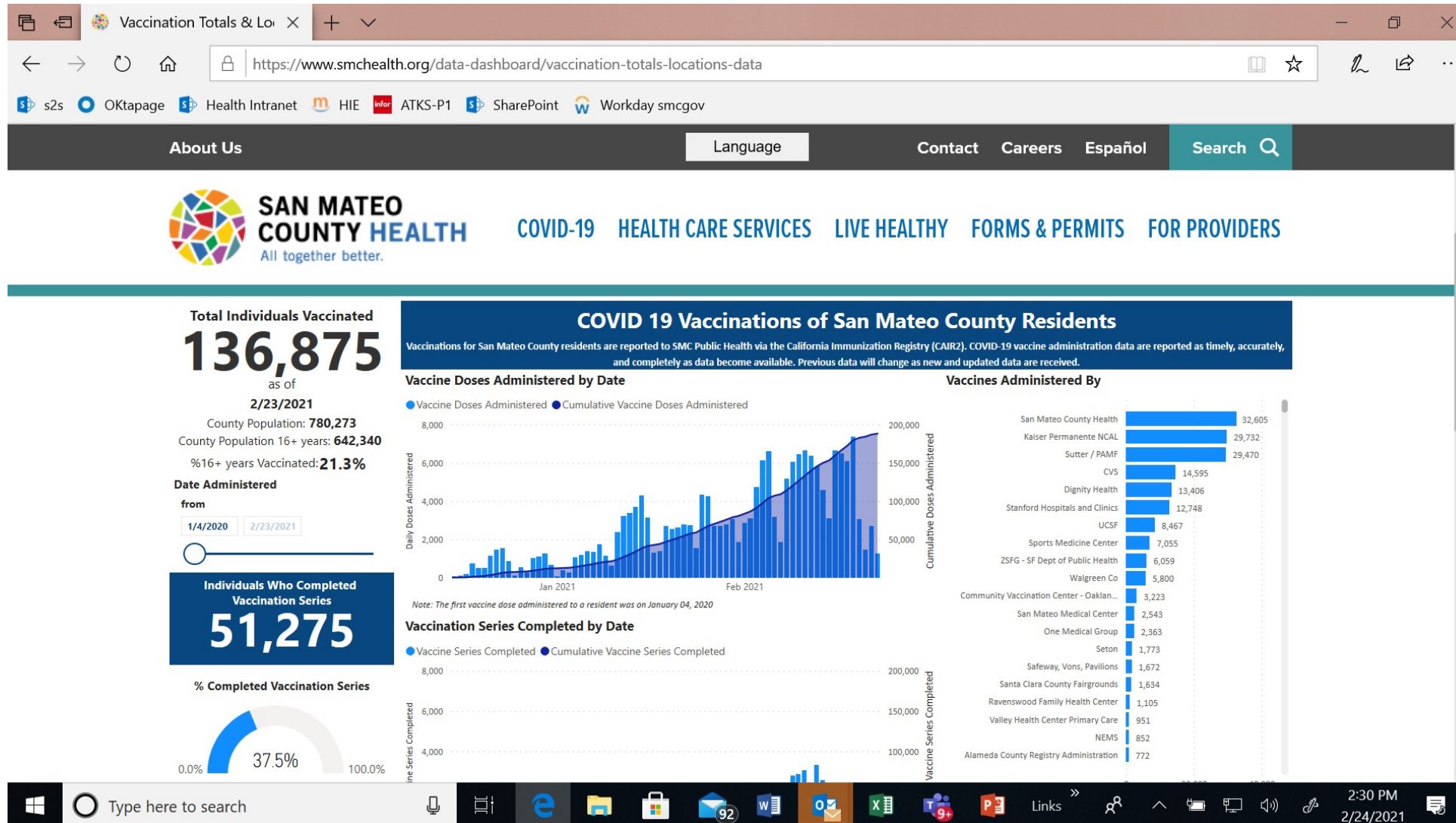
Tracking SM County's vaccination progress



Updated:
2/23/21

Can be found online
at: smchealth.org/data-dashboard/vaccination-totals-locations-data

Tracking SM County's vaccination progress



Updated:
2/23/21

Can be found online
at: [smchealth.org/data-dashboard/vaccination-totals-locations-data](https://www.smchealth.org/data-dashboard/vaccination-totals-locations-data)





SAN MATEO COUNTY HEALTH

All together better.



QUESTIONS?

THANK YOU



**SAN MATEO
COUNTY HEALTH**

All together better.