

# The Human History

## A Brief History and Key Events of the Coastside and Moss Beach

1. ~3000 BC-1776 Chiguans first human settlers/stewards
2. 1769 Gaspar de Portolà discovered San Francisco Bay
3. 1769-1821 Spanish built Missions & Presidios, took over the land and the Chiguans' way of life was destroyed
4. 1822 Mexican independence from Spain, took over the land and established huge ranchos on Coastside
5. 1848 California becomes part of US
6. 1849- Gold Rush: Americans and other immigrants took over Mexican lands on the Coastside
7. 1881 Encouraged by reports of a railroad to be built, J. F. Weinke buys 3,000 acres from ranchero Victoriano Guerrero, builds a hotel which brings tourism, planted cypress trees, named it Moss Beach



1. Replica of Ohlone (Chiguan) Hut in the graveyard of Mission San Francisco de Asis, San Francisco



2. Gaspar de Portolà



3. Mission Dolores (Mission San Francisco de Asis)



4: Rancho Corral de Tierra, was given in 1839 by Governor Pro-Tem Manuel Jimeno to Francisco Guerrero y Palomares. This rancho extended from Martini Creek south along the Pacific coast past Montara to Arroyo de en Medio just south of El Granada, and included the present-day communities of Moss Beach, and Princeton-by-the-Sea.

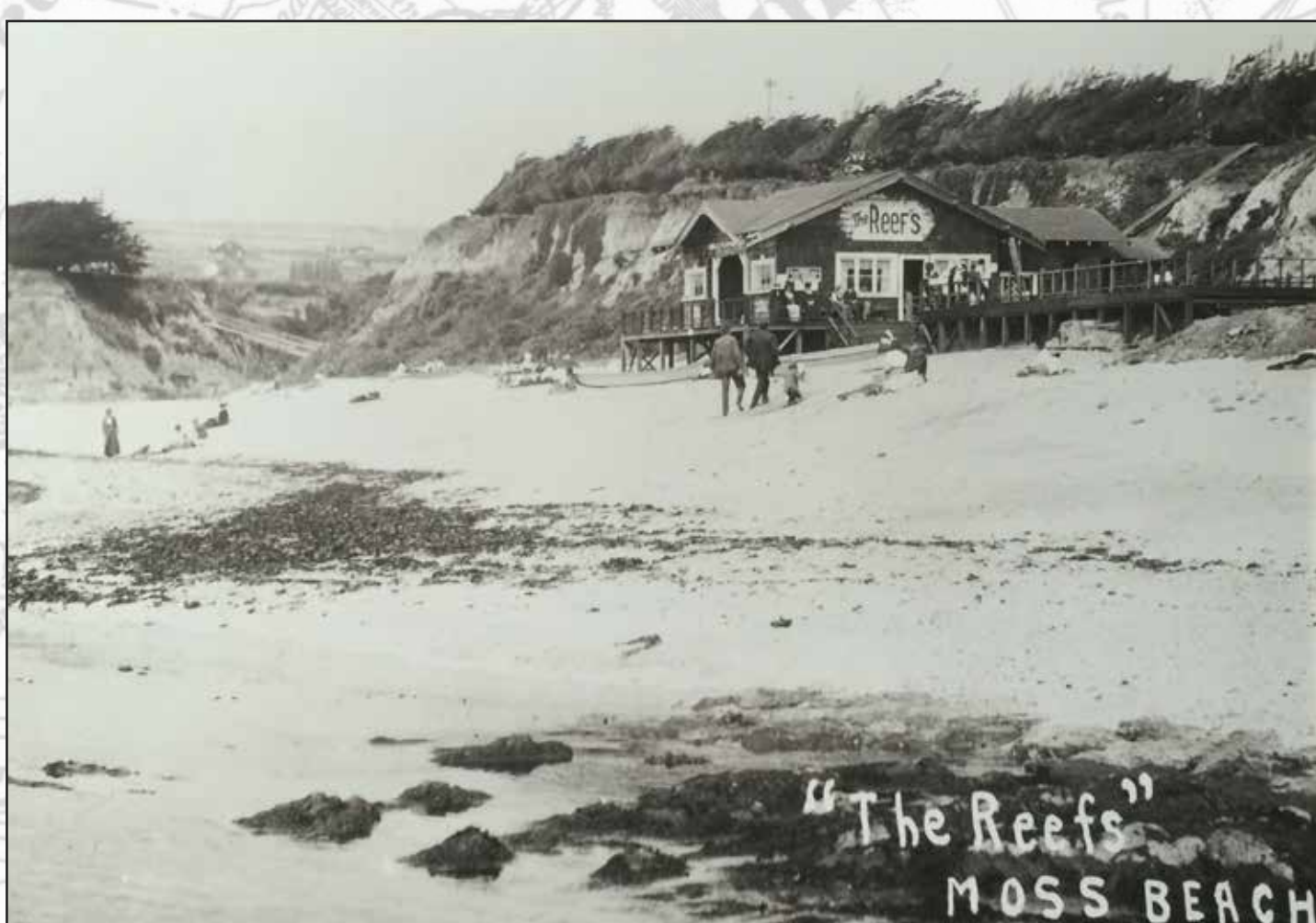


photo: 1906 The Coast Side Comet

7. J.F. Weinke, founder of Moss Beach, went out every morning to catch his breakfast eel. Eel fishing is still popular on the coast but it's illegal to do so in the reserve.



7. Weinke's Moss Beach Hotel built in 1882. It burned down in 1911.



San Mateo County Historical Society - courtesy Kathleen Baker

10. Nye's Reef Restaurant. Note all the abalone shells decorating the interior.

# Fitzgerald Marine Reserve - 50 Years of Stewardship 1969-2019



8. 1881–1969: Growth of private ownership both commercial and residential
9. 1908–1920 Railroad brings tourists
10. 1912 Charles Nye Sr. builds hotel, restaurant on what is now Reserve
11. 1934 State Route Hwy 1 provides vehicle access
12. 1947 Doelger bluff house, land developer
13. 1963-1968 Goldthorpe envisions marine reserve
14. 1969 San Mateo County establishes Reserve
15. 1970 >800 citations for removing sea life



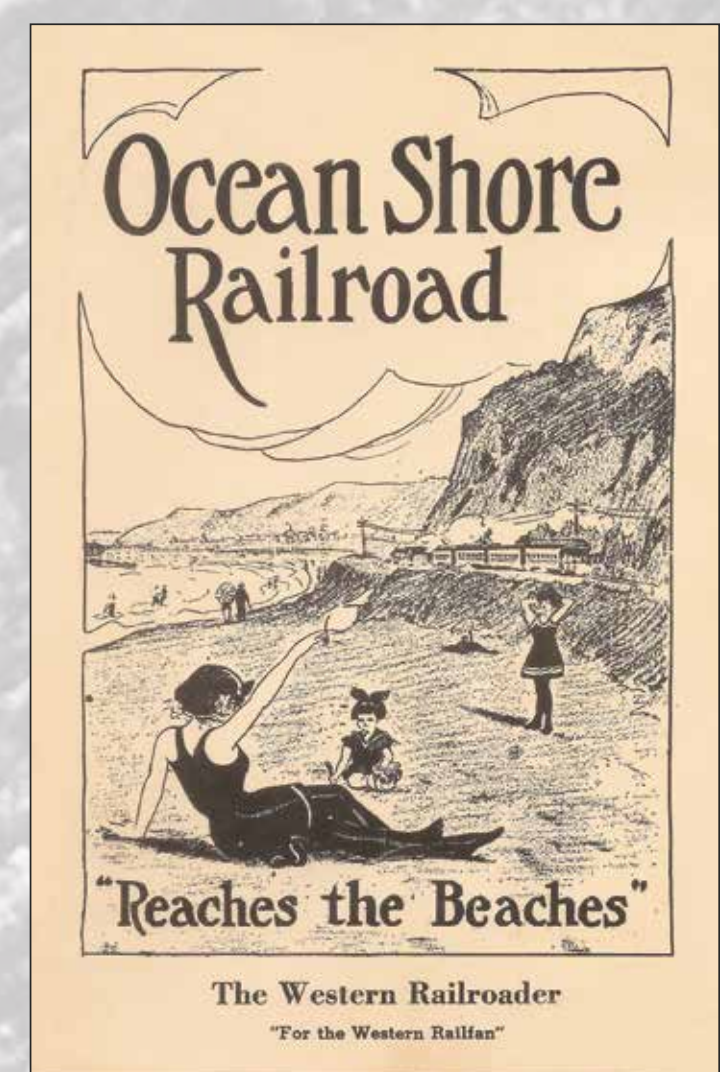
10. Update: Charley Nye and Nye's Reef II, June 1988. Nye says it's a different atmosphere now from those rousing days of the past when his father could collect enough abalone in a half hour on the reef to feed a big dinner crowd.



9. Wading at the Beach



9. Ocean Shore Railroad #8 at Moss Beach Station c 1915.



9. Advertising Brochure

# of Fitzgerald Marine Reserve

## Key Events of Fitzgerald Marine Reserve

1. April 1969 Bob Breen becomes Park Naturalist
2. August 1969 San Mateo County and the State establish the park as a Marine Life Refuge—restricted disturbing or taking of marine life
3. 1972 Marine Mammal Protection Act and 1st class of volunteer docents
4. 1994 Excavations uncover evidence of native presence
5. 1983 Added Seal Cove
6. 1985 Friends of FMR formed
7. 1987 First Junior Ranger Camp
8. 1990 Marine Resources Protection Act
9. 1999 Marine Life Protection Act
10. 2010 New stairway
11. May 1, 2010 Fitzgerald included in 18 new Marine Protected Areas (MPAs)
12. 2012 New parking/drainage
13. 2016-17 Upgraded Visitor Center



BETWEEN THE TIDES

FRIENDS OF FITZGERALD MARINE LIFE REFUGE

Vol. 2 No. 2

Summer, 1988

1988  
2nd Junior Ranger Camp  
Tidepool Quiz. Ranger Bob Breen is shown at Moss Beach reviewing a lesson on the food chain of marine animals with youngsters who participated in the recent Junior Ranger Program.



James V. Fitzgerald, a San Mateo County supervisor, led the county's effort to save a popular marine reserve in Moss Beach in 1969.



In 1994 Fitzgerald attended the 25-year celebration of the FMR. "I want to extend my thanks to all James Fitzgerald docents who have worked hard to help the public appreciate the value of this wonderful resource." He also thanked Bob Breen, supervising naturalist at the reserve who was the first and only county naturalist to manage the area, and other volunteer workers and supporters who have had a part in making the tidepool area a popular recreation facility.

### 8. New Seal Cove Stairway 2010

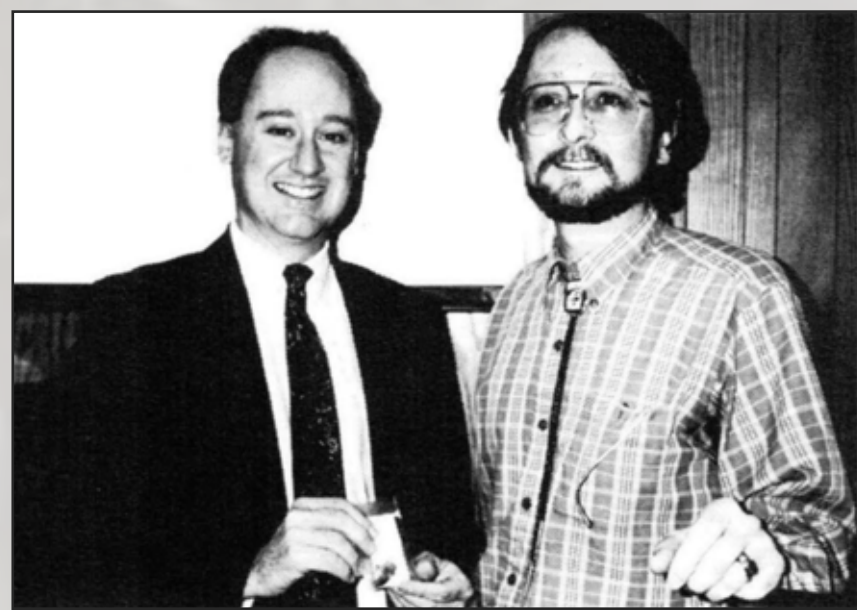


Cecily Harris, left, and Congresswoman Jackie Speier

### 9. MPA



Between the Tides, Winter 1995



COUNTY BOARD OF SUPERVISORS CHAIRMAN Ted Lempert (left), receives crescent-shaped relic from Mark Hylkema, the archeologist who uncovered the artifact at Fitzgerald Marine Reserve.

When Mark Hylkema, an archeologist, began working on a grant from the U.S. Geological Survey on an excavation project at the Fitzgerald Marine Reserve a year ago, he had no idea that he would uncover a rock chipped into a crescent that may be up to 10,000 years old, predating other artifacts previously discovered in San Mateo County.



In the spring of 1993 Hewlett Packard donated a Vectra workstation computer and deskjet 500C printer to the marine reserve. The computer unit, color monitor, accompanying mouse and printer were valued at \$4700.



In 2017 Hewlett Packard donated an interactive computer called a Sprout. Visitors can scan items and place them into a virtual tide pool.



Upgraded Visitor Center

