

The Resource Conservation District



Presented to
Midcoast Community Council
October 11, 2017



Since 1939

with

USDA Natural Resources
Conservation Service



- ◆ Non-regulatory
- ◆ Confidential
- ◆ Typically free



What We Do

- ◆ Technical Assistance
- ◆ Project Implementation
- ◆ Conservation Planning
- ◆ Education and Outreach



Partnerships



Water



Climate

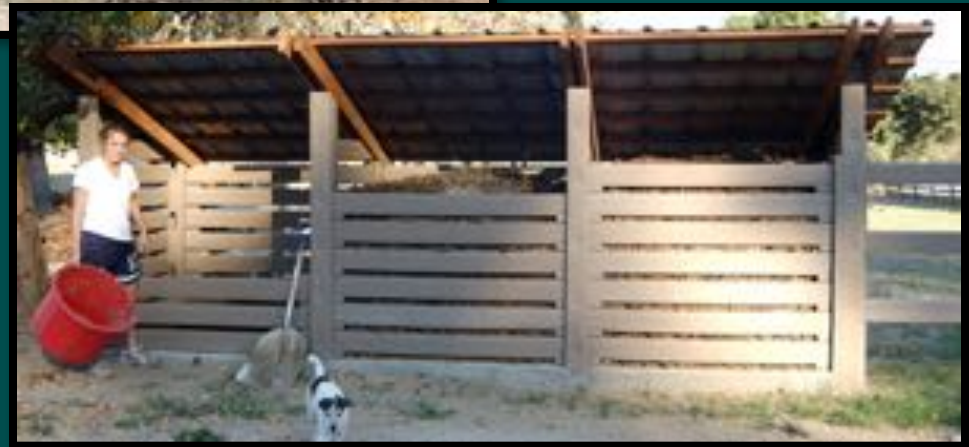
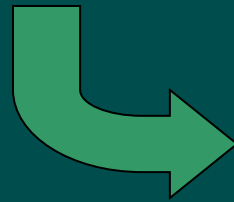
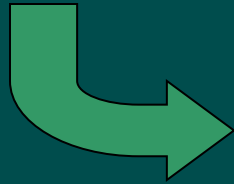


Wildlife



Agriculture











The San Mateo County Resource Conservation District delivers local solutions and real results for natural resource conservation in partnership with landowners, farmers, public agencies, non-profit organizations, and more.

[View this email in your browser](#)

ALERT

RAINS ARE COMING, TIME TO CLEAN UP PET WASTE!



Did you know:

- that recent water quality monitoring on the Coastside has shown that dog and other pet waste across the landscape, even in backyards, is affecting the health of our local creeks and the ocean?
- that we are expecting rain tonight?

NOW is the time to clean up pet waste in your backyard! Spend a few minutes today picking up what your pet left behind, and help prevent waste from entering creeks and the ocean!

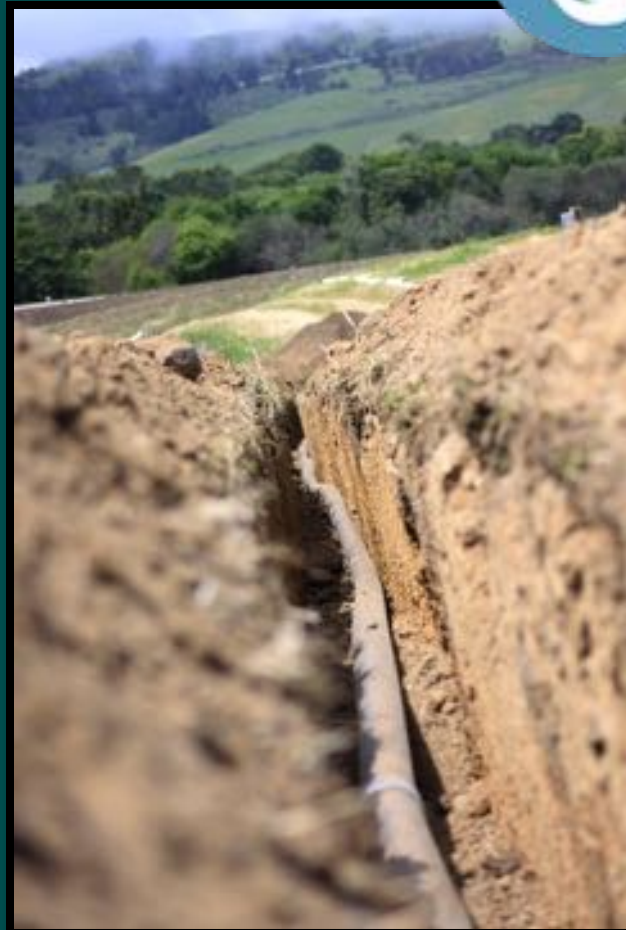


Notice
This area is a natural area and is protected by law. It is a sensitive area and is important to the health of the ecosystem. Please do not litter or remove any natural resources. If you see any litter, please report it to the nearest park ranger or lifeguard. Thank you for your cooperation.

Atención
Este área es un área natural y está protegida por la ley. Es un área sensible y es importante para la salud del ecosistema. Por favor, no arrojes basura ni elimines ningún recurso natural. Si ves basura, por favor reportalo al guardabosques o salvavidas más cercano. Gracias por su cooperación.

Para más información, consulte a los guardabosques o salvavidas más cercanos. Gracias por su cooperación.







SILICON VALLEY
Water Conservation
AWARDS





Water



Climate



Wildlife



Agriculture









Water



Climate



Wildlife



Agriculture









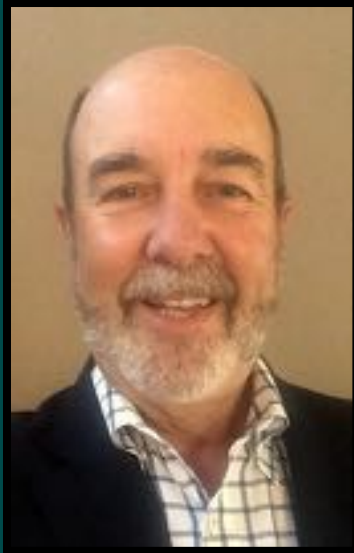
Working Across Boundaries



\$1 = \$42

property taxes

state & federal





Thank you!

Kellyx Nelson

Executive Director

kellyx@sanmateorcd.org

(650) 712-7765 x102

www.sanmateorcd.org

www.facebook.com/sanmateorcd

YouTube: “sanmateorcd”