

Moss Beach

STATE ROUTE 1 CONGESTION & SAFETY
IMPROVEMENTS PROJECT UPDATE

MIDCOAST COMMUNITY COUNCIL
OCTOBER 11, 2023



To learn more about this project, please visit: www.smcgov.org/planning/Moss-Beach-SR-1

Agenda

- Project Overview
- Open House and Presentation
- Summary of Questions and Comments Received
- Next Steps

Project Overview

Project Vicinity Map

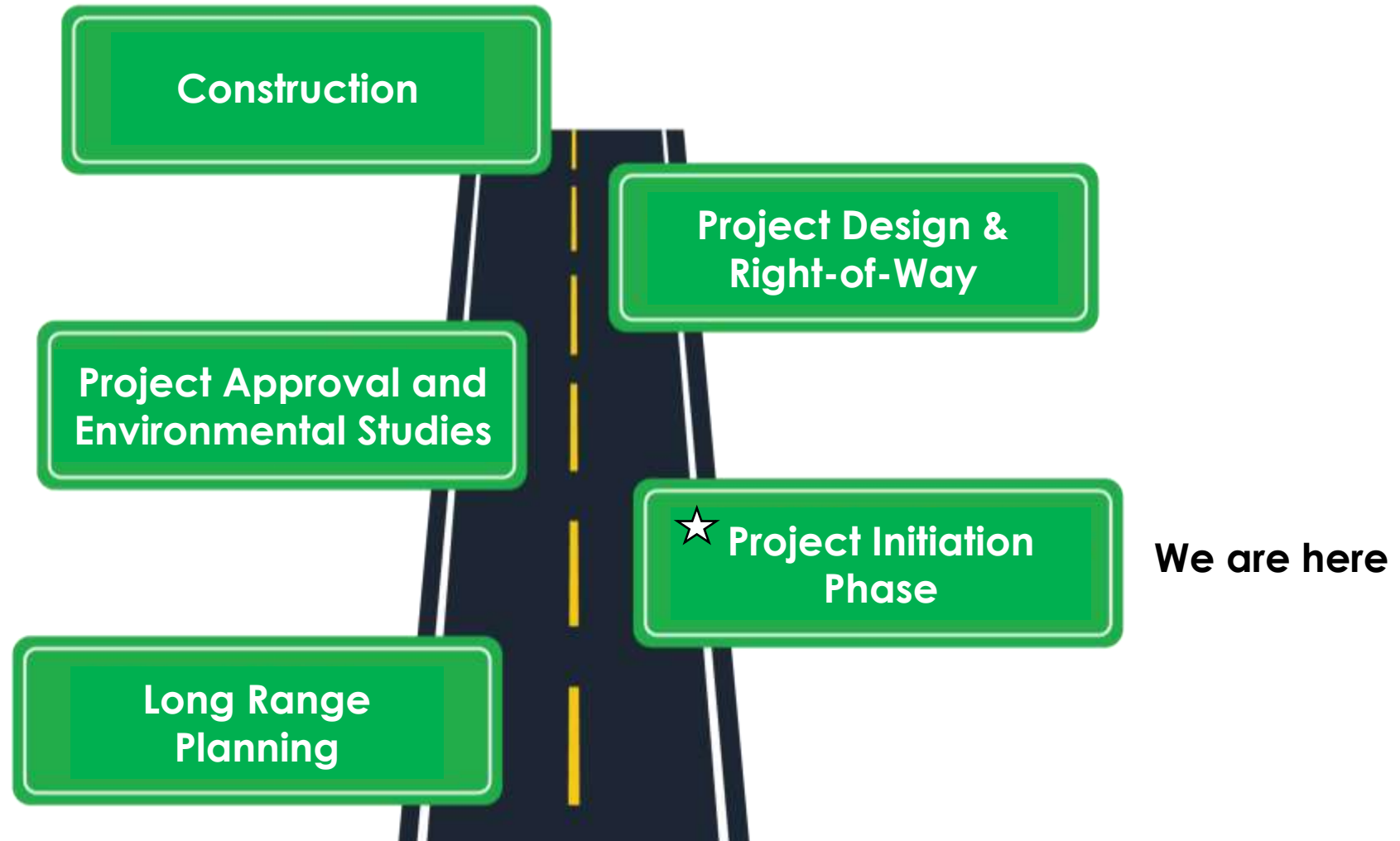


Project Goals

- Improve pedestrian and bicycle facilities
- Encourage environmentally friendly transportation options
- Improve multimodal connections to coastal resources
- Improve the operations and safety for all users at key intersections



Phases of a Project



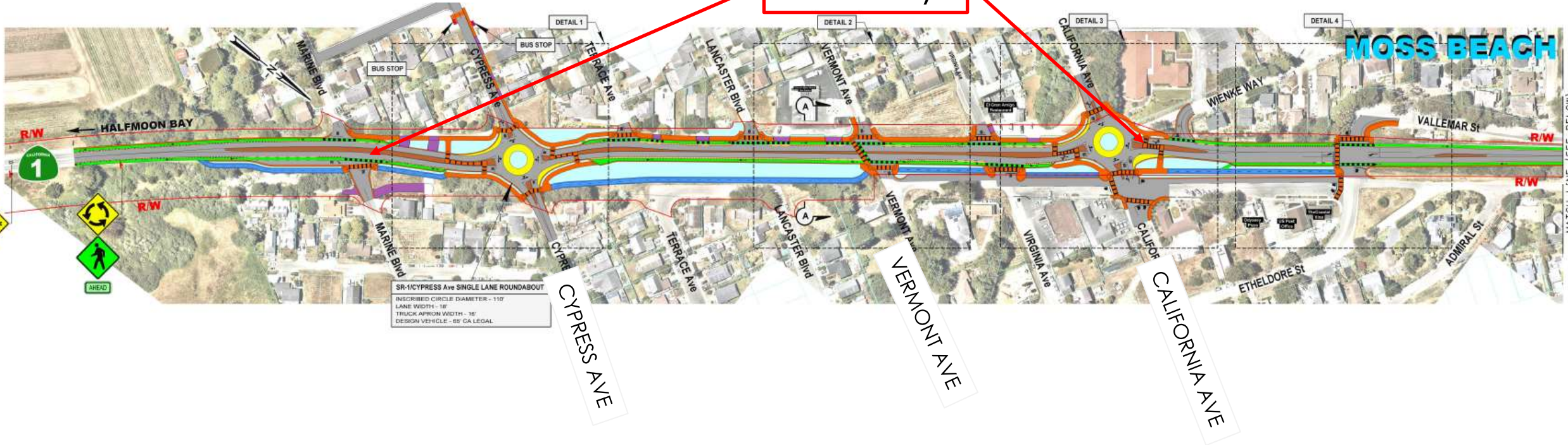
Project Alternatives

Review Details on Project Webpage

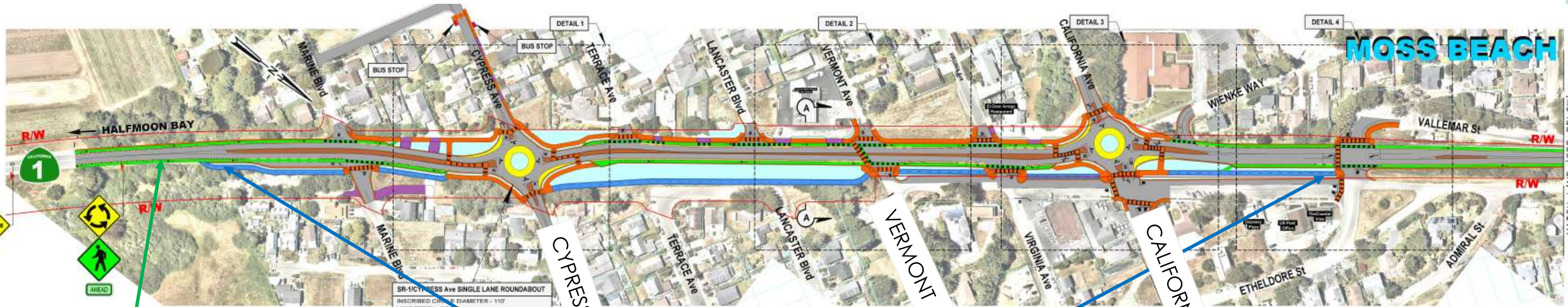
- **No project**
 - Do nothing
- **Project Build Alternative 1**
 - Signal at 16th St, Roundabouts at California Ave and Cypress Ave
- **Project Build Alternative 2**
 - Signals at 16th St, California Ave, and Cypress Ave
- **Two options** for addressing 16th St / Carlos St intersections with HWY 1
- **Build Alternative 1 has options** for raised center median or center turn lane
- **Both** alternatives include **pedestrian, bicycle, and transit** improvements

Pedestrian & Bicycle Features – All Alternatives

Walkways

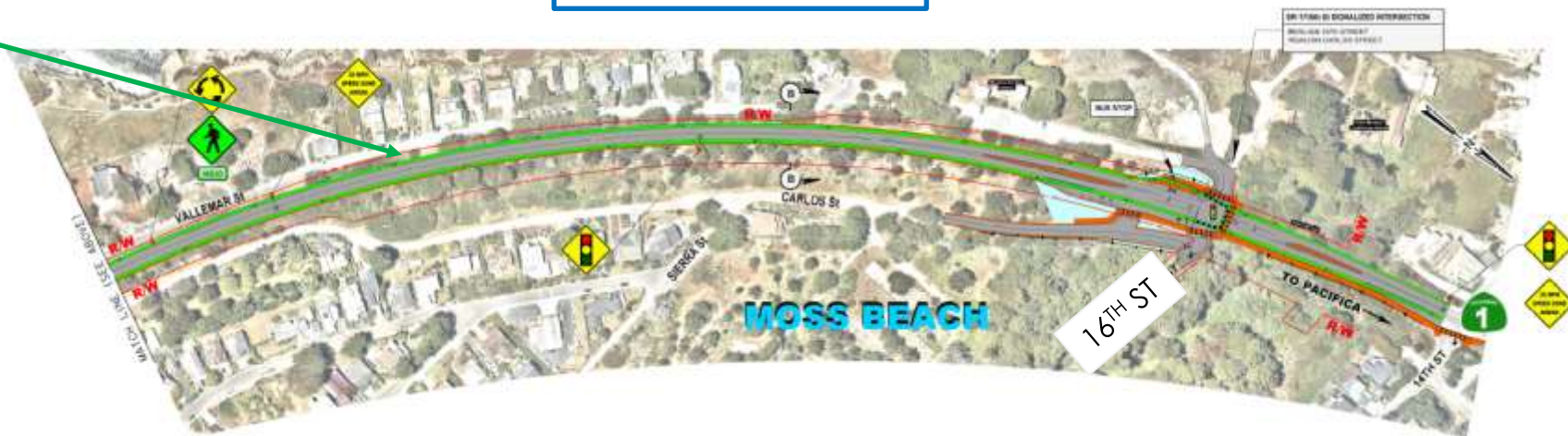


Pedestrian & Bicycle Features – All Alternatives

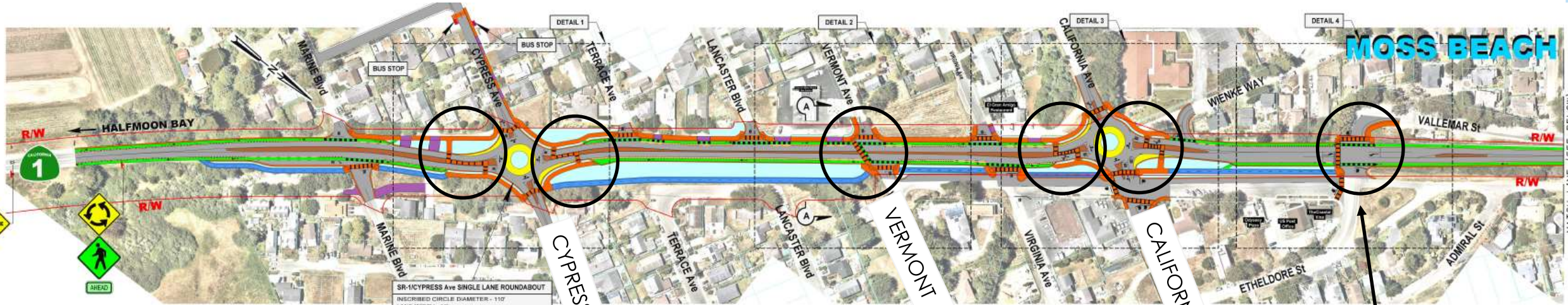


Bike Lane

Multimodal Trail



Pedestrian & Bicycle Features – All Alternatives

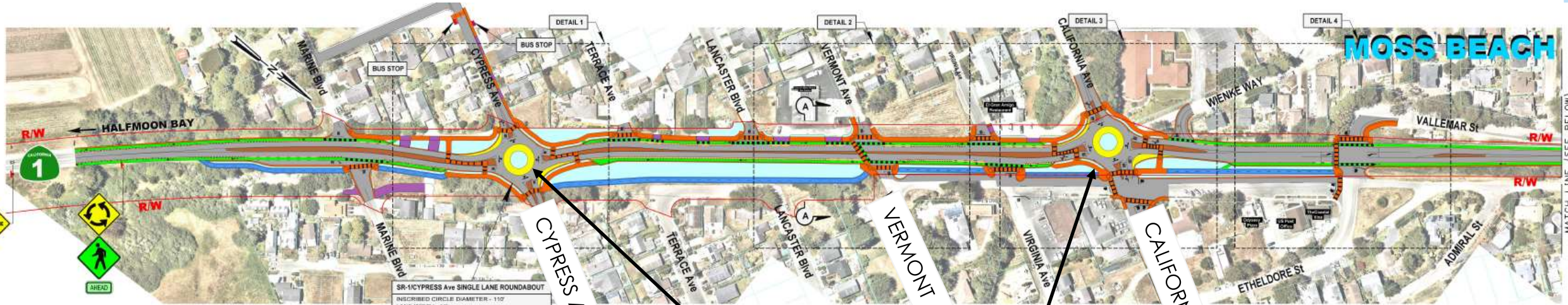


SR-1/CYPRESS Ave SINGLE LANE ROUNDABOUT
INSCRIBED CIRCLE DIAMETER - 110'
LANE WIDTH - 16'
TRUCK APPROACH WIDTH - 16'
DESIGN VEHICLE - 85' CA LEGAL

Crosswalks



Project Alternative 1, Options A & B



CYPRESS AVE

VERMONT AVE

CALIFORNIA AVE

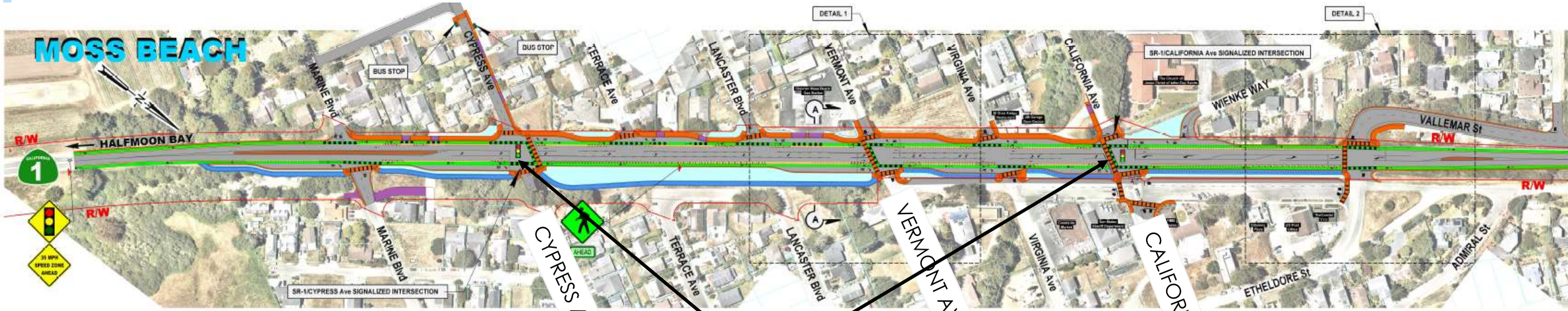
Roundabouts

Traffic Signal



16TH ST

Project Alternative 2

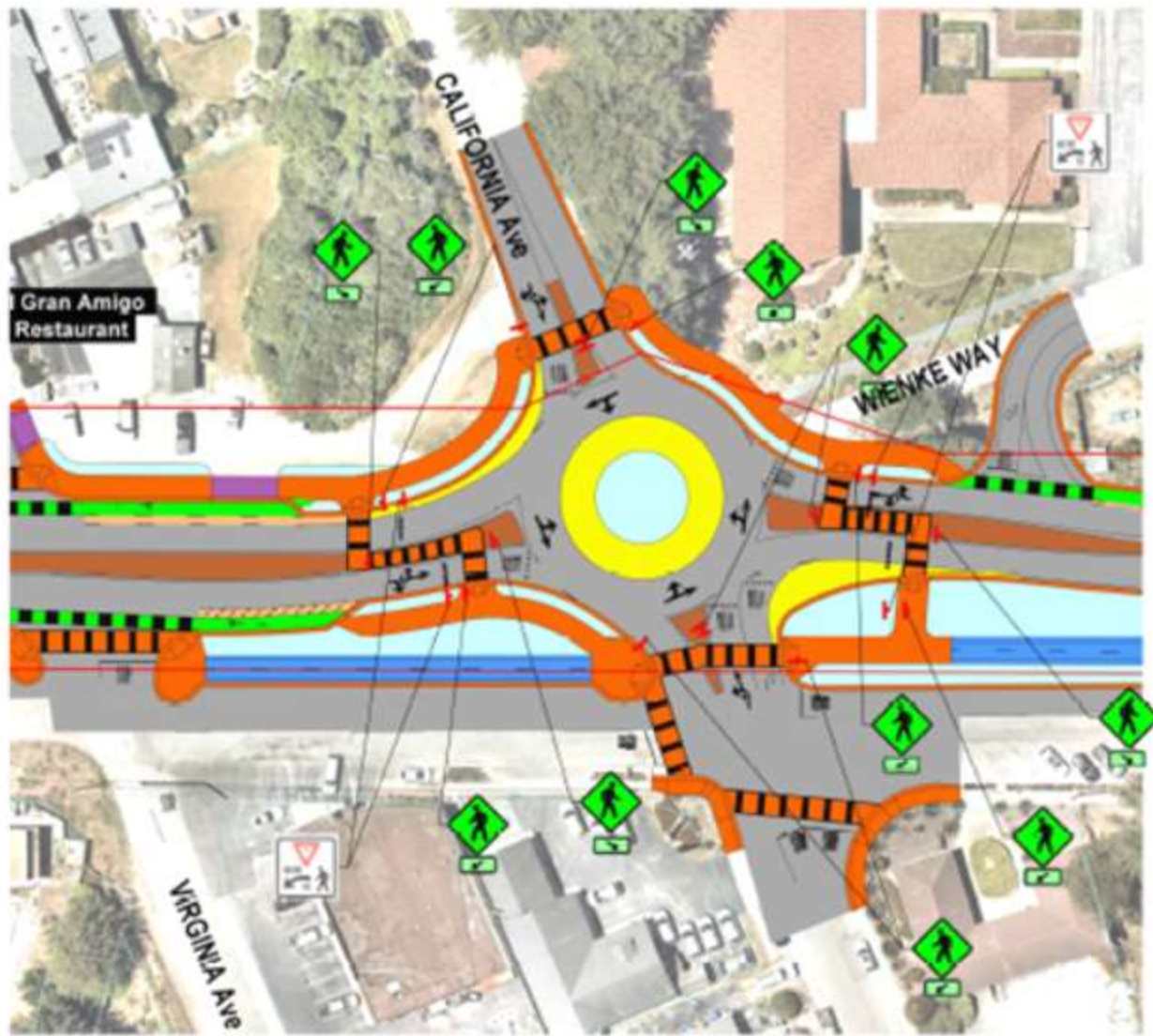


Traffic Signals

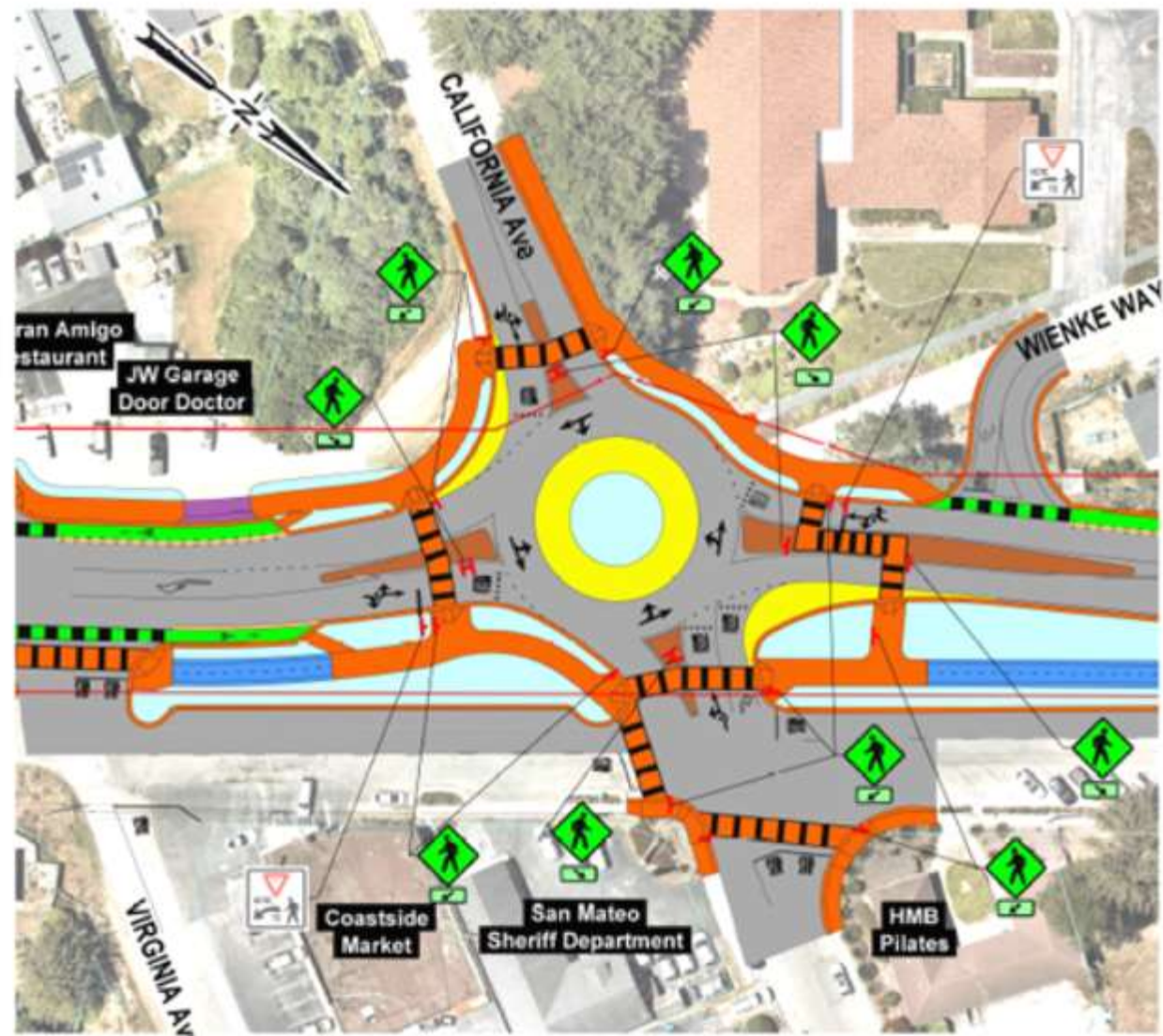


Alt 1, Option A (Raised Median)

Alt 1, Option B (No Raised Median)

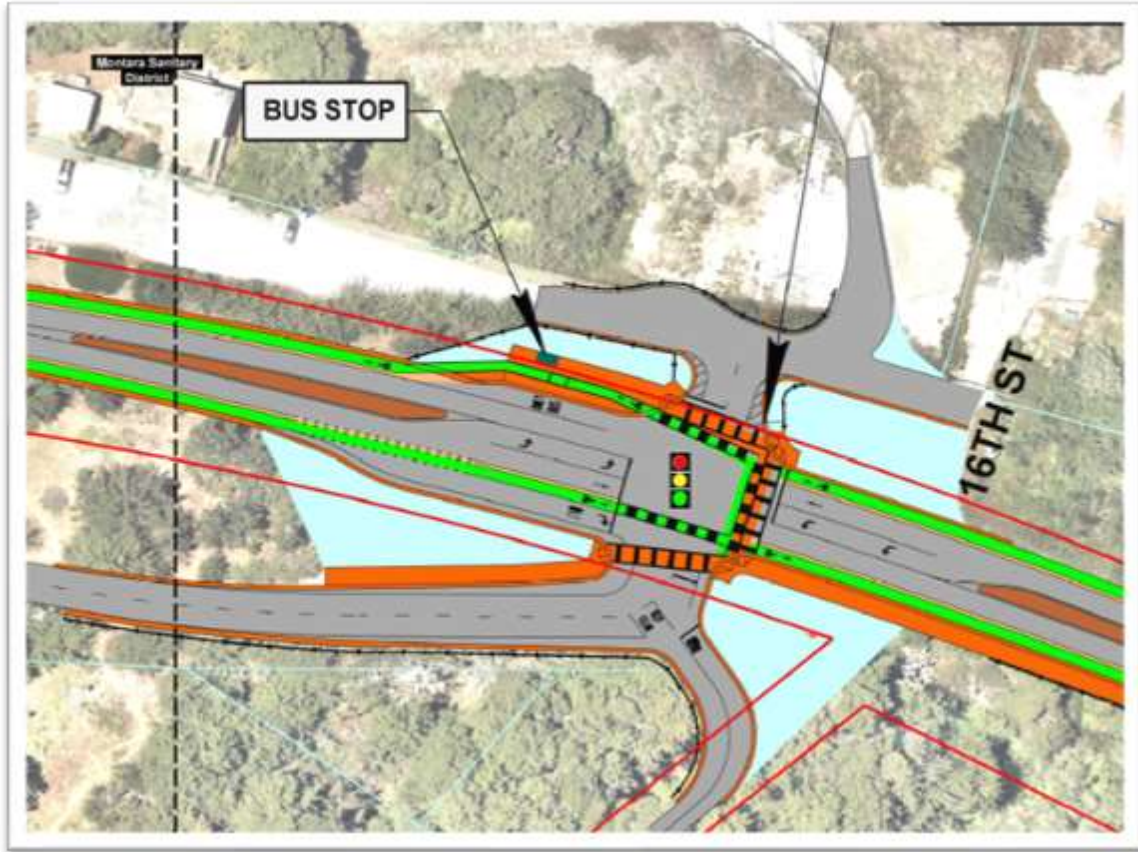


DETAIL 3
SR-1/CALIFORNIA Ave SINGLE LANE ROUNDABOUT

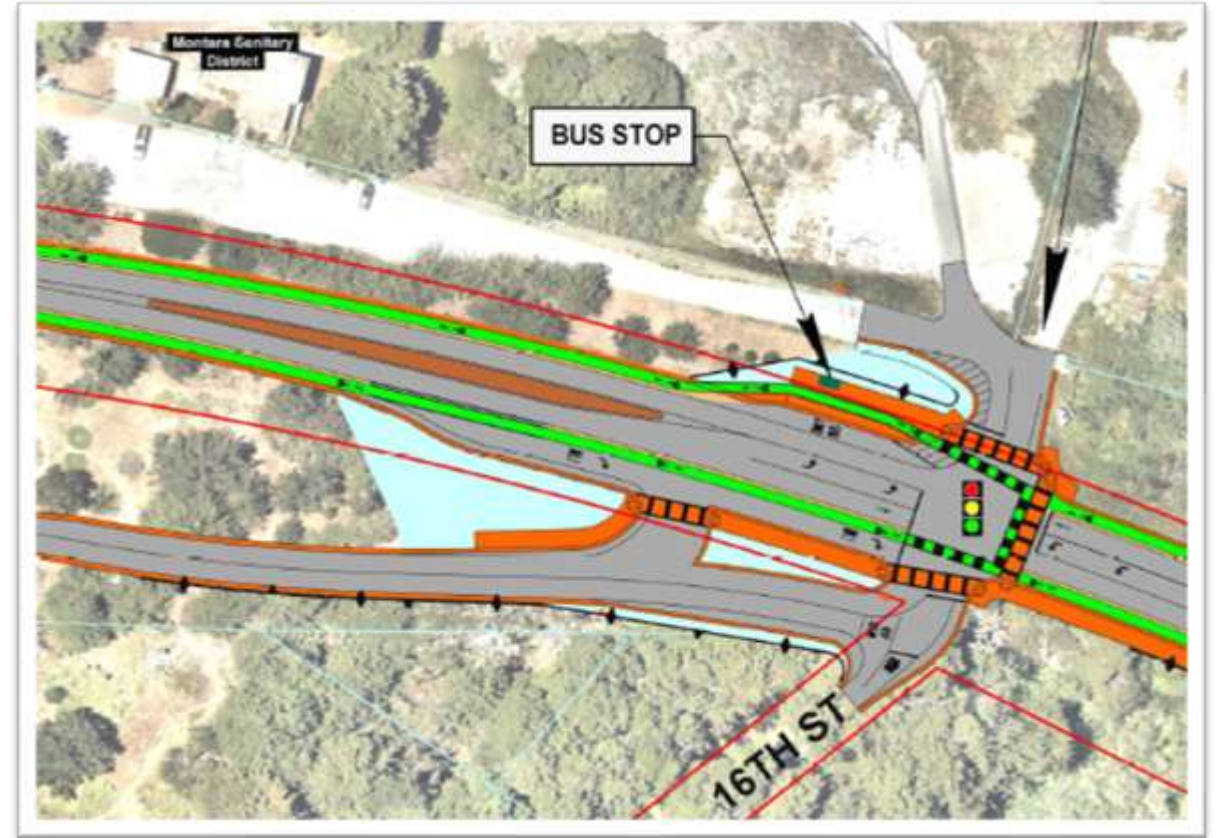


DETAIL 3
SR-1/CALIFORNIA Ave SINGLE LANE ROUNDABOUT

Project Alternative 1 at 16th Street



Project Alternative 2 at 16th Street



Open House and Presentation

Event Summary

- September 19, 2023, from 6:00 to 8:00 p.m. at Supervisor District 3 office in Princeton
- Noticed via postcard mailers, flyers, email blasts, webpage updates, and social media
- Format
 - Open house with large-scale exhibits
 - Interact with team members
 - Presentation and Q+A
 - Video simulations
- 69 people signed-in
- Post-meeting exhibition from 9/19/23 through 9/29/23







Meeting Evaluation

*"After the September 19, 2023 event, I have a better understanding of the **improvements being recommended for further study** for the Moss Beach SR-1 Congestion & Safety Improvements Project."*

- 5 people strongly agree
- 1 person slightly agrees
- 2 people are neutral
- 0 disagree

Meeting Evaluation

*"After the September 19, 2023 event, I have a better understanding of the **Caltrans process and next steps** for the Moss Beach SR-1 Congestion & Safety Improvements Project."*

- 1 person strongly agrees
- 5 people slightly agree
- 2 people are neutral
- 0 disagree

Feedback

- *Thank you for giving the residents most affected by the proposed changes a chance to view and comment on the plans at this stage of the process. I think the attendance at the meeting alone gives a good indication of our community.*
- *We appreciated being able to talk one on one with some of the representatives who were there.*
- *I liked being able to see the large printouts and ask questions of the designers.*
- *Staff was eager to assist and answer questions.*
- *The exhibits were excellent.*
- *Q&A should have been longer.*
- *Suggest you have folks submit their questions in writing, then we can avoid those that just want to hear themselves talk.*
- *The video was too simplistic.*
- *Convenient venue.*
- *Hard to hear.*

Summary of Questions and Comments Received

Questions & Comments

- Written
 - 9 before meeting via email/website
 - 15 comment cards submitted during meeting
 - 17 after meeting via email/website/comment cards
- Oral
 - 10 questions and/or comments after presentation
 - Discussion with individual team members

Themes

- **Overall desire for Project** - comments focused on project details
- **Safety** - lower speeds, fast track implementation, and provide better bike/ped facilities
- **Operations** - keep SR-1 moving while allowing cross traffic movements, 16th Street / SR-1
- **Impacts** - noise, light, species, watershed, construction, utilities
- **Preferences among alternatives**

Implementation approach and timeline

Key Questions / Comments

- How can implementation be sped up?
- Phasing implementation
 - Cypress Avenue first
- Interim solutions
 - Acceleration lanes, signal, trimming back trees
- Coordination with development projects

Raised By

- Attendees of 9/19/23 meeting with individual project team members
- 9/19/23 post-presentation Q+A
- Ellen K.
- Neighbor.
- Cid Y.
- Sandra B.

Lower speeds and speed limits on SR 1

Key Questions / Comments

- What additional features can the project include to lower speeds, especially from 14th Street to California Avenue?
- More enforcement
- Lower posted speed limit signs

Raised By

- Attendees of 9/19/23 meeting with individual project team members
- Len E.
- Ellen K.
- Dan K.
- Graham B.
- Joan D.

Increase bike/ped improvements

Key Questions / Comments

- Pedestrian safety
 - Flashing lights, median, roundabout, underpass
- Upgrading Class 2 bike lanes to Class 4 or path
- Adding path to westside of SR 1, north of Etheldore
- Ped pathway on Highway 1
- Improvements on local streets

Raised By

- Attendees of 9/19/23 meeting with individual project team members
- 9/19/23 post-presentation Q+A
- Dan K.
- Theresa M.
- Remi T.
- Kathryn S.
- Dan H.
- Michelle W.
- Balazs H.
- Graham B.

16th Street / SR 1 Intersection

Key Questions / Comments

- Why is an intervention needed at all?
- Concerns about a signal
 - Poor sight distance
 - How can project slow approach speeds?
 - Increase in rear-end collisions
 - Will traffic be stopped unnecessarily on SR 1?
- Request for roundabout

Raised By

- Attendees of 9/19/23 meeting with individual project team members
- 9/19/23 post-presentation Q+A
- Marco C.
- Theresa M.
- Elizabeth P.
- Todd E.

Impacts of project implementation

Key Questions / Comments

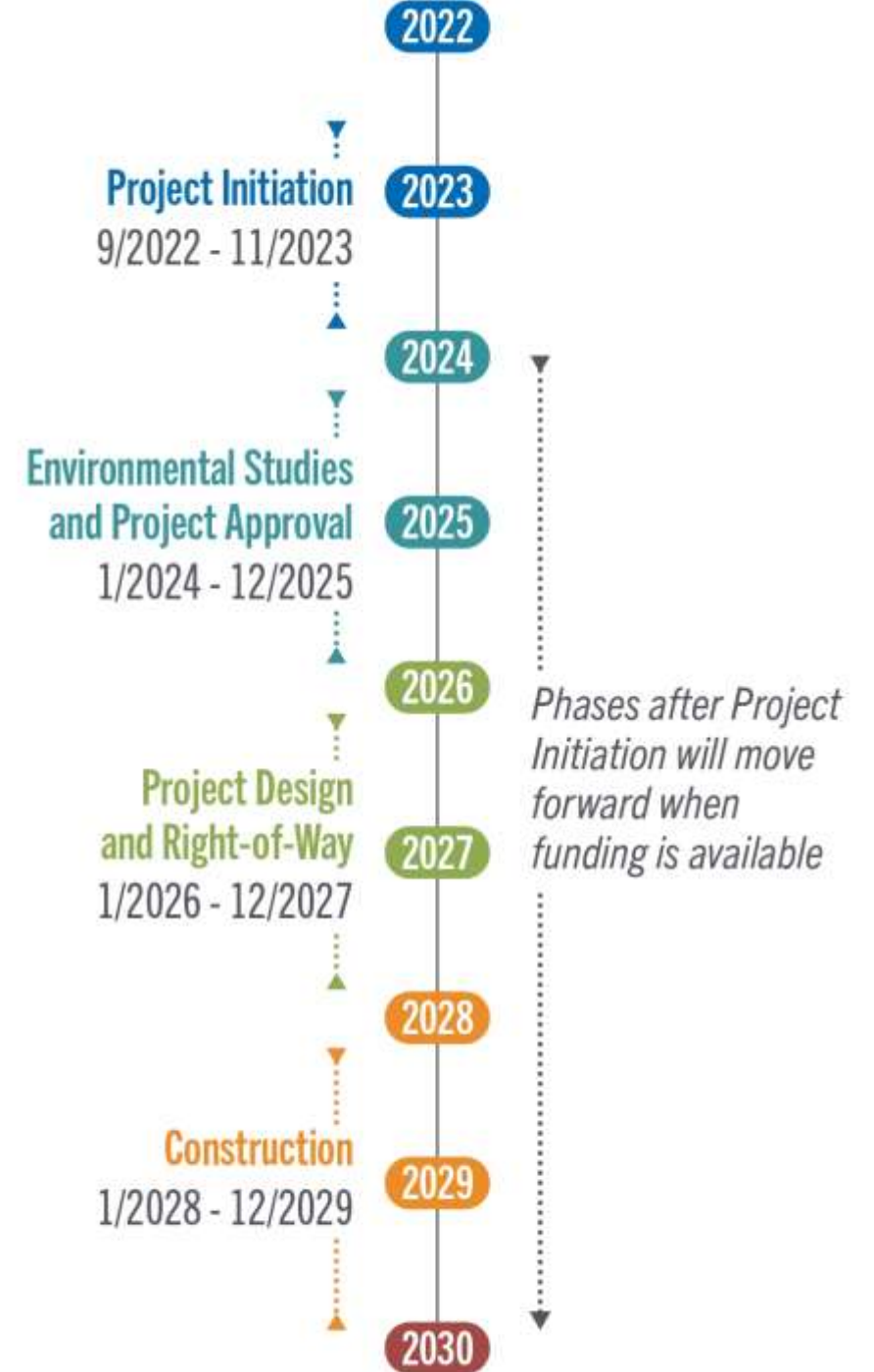
- Minimizing noise impacts
- Lighting impacts on adjacent properties and overall light pollution
- Addressing drainage, stormwater
- Utility relocation and cost
- Construction impacts

Raised By

- Attendees of 9/19/23 meeting with individual project team members
- Kathryn S.
- Theresa M.
- William and Janet
- David A.

Next Steps

- Finalize Project Initiation Document (PID) in November 2023
- Funding request submitted for Project Approval and Environmental Studies phase



Thank you!



For questions or comments about this project, please contact:

Chanda Singh
Senior Transportation Planner
County of San Mateo
csingh@smcgov.org

Lilliana Price
Project Manager
San Mateo County Transportation Authority
pricee@samtrans.com

To learn more about this project, please visit: www.smcgov.org/planning/Moss-Beach-SR-1