



Are You ReDI For Fall 2023?

#Volunteer at ReDI School NRW



Hayley Spire

Contact: volunteernrw@redi-school.org



We use tech to connect human potential and
opportunity with dignity & humility

We are ReDI



ReDI School of Digital Integration is a non-profit tech school for locals and newcomers without access to digital education.

Integration brings shared value



Our aim is to provide our students with valuable digital skills and a strong network of tech leaders, students and alumni to help create new opportunities for all.



“We are using technology to break down barriers and connect the leaders of tomorrow.”

— Anne Kjaer Bathel, CEO ReDI School

The ReDI Community

11.442
hrs. tech training
since 2016

6379+

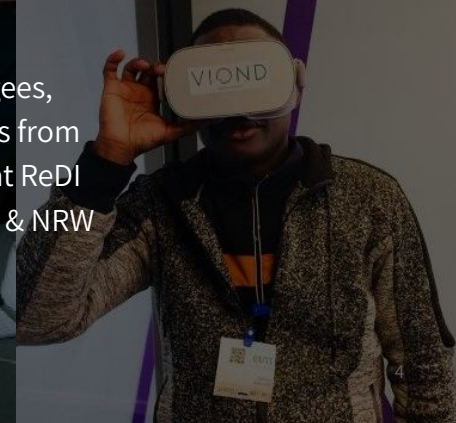
7596+

Tech Leaders & Volunteers

extraordinarily engaged
Tech-Experts, Coders,
Software-Engineers,
Data-Scientists, Designers,
HR-Experts and Leaders have
trained since 2016...

Tech Talents & Students

highly motivated refugees,
migrants and newcomers from
more than 50 countries at ReDI
School in Berlin & Munich & NRW
supported by...



ReDI School NRW + Talent Success Teams



NRW Admin



Takuya Furukawa
Educational Director



Muhammad Shehbaz
IT Infrastructure
Support

Digital Career Program



Anas Fawzy
Tech Education Lead



Hayley Spire
Head of Community
Development



Abdullah Albeedh
Student Community
Manager

Digital Women Program



Olena Buchak
Program Manager

Kids & Youth Program in Duisburg



Laura isabel Voss
Program Manager



Evrin Yilmaz
Course Lead



Pelin Öz
Course Lead



Dilara Oruc
Course Lead



Sema Nur Albayrak
Course Lead



Helin Kaya
Course Lead

UA Kids & Youth Program



Valeriia Kompaniets
Program Manager

Talent Success Team (for ReDI German locations)



Birgit Köbl
Team Lead



Jamie Johnston
Program Coordinator



Janis Janowsky
Career Partnerships
Manager



Jennifer Synan
Career Workshops and
Training Manager



Hadeer Mohamad
Mentorship Program
Manager



Paulina Munoz
Job Integration
Manager



Angela Bickmore
Tech Labs Manager

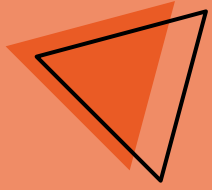


Digital Career Program

Tech Talents of Tomorrow

For students with all genders
from all cities in NRW





Digital Women Program

Digital Empowerment and Equal Opportunities for women with refugee and migration backgrounds

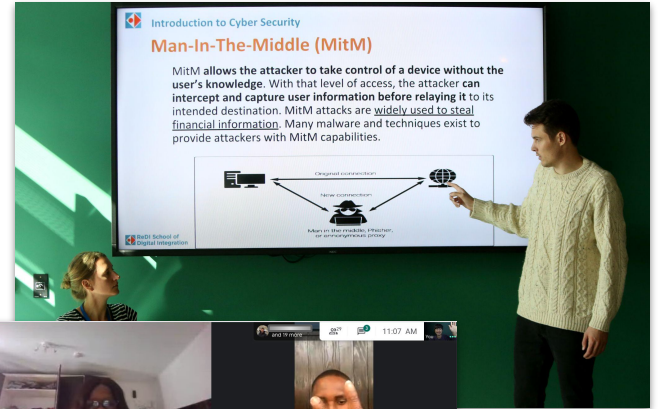


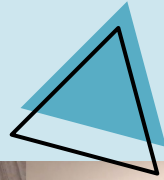


The Volunteers

ReDI heroes: rise by lifting others

Our mission at ReDI School is supported by the local tech community, who teaches, mentors, and supports our students along the way. We are looking for a variety of volunteers who can bring their professional experience to help our students grow.





How to become a teacher?

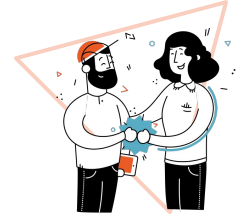
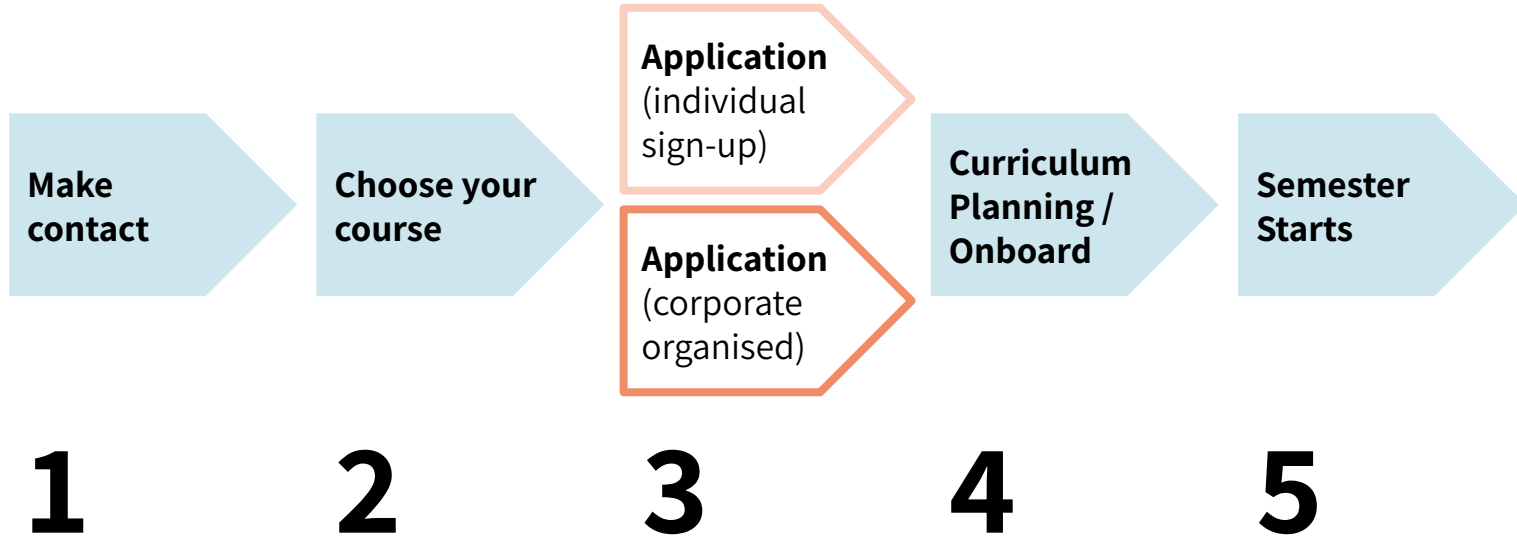


Volunteer Timeline Fall Semester 2023



July – August	Teacher recruitment, screening	Promote volunteering offers, arranging 1:1 meetings with volunteer applicants
DCP August 14 - August 31 DWP October 17 - October 19	Curriculum Planning Sessions / Onboarding	Teachers meet each other + ReDI staff, we go over material, calendar and sign up for lessons
September 11	Digital Career Program (DCP) Semester Starts!	DCP courses begin
September 15	Semester Kickoff event	Get to know teachers and students!
October 21	Digital Women Program (DWP) Semester Starts!	DWP courses begin
December 12	Semester Ends	Last lesson of the semester
December 14	Demo Day DCP + DWP!	ReDI graduation for students

Volunteer Process Overview



Hero time!

The process: get started!

Make contact

We figure out together who the designated contact is

- You can contact Hayley directly with your interest in volunteering for DCP
volunteernrw@redi-school.org
- We can choose a colleague responsible to relay the message of your interest in volunteering to me

1

Choose your course

You'll be given a list of courses and course material to choose the best course you feel confident teaching in or your team can suggest a new course!

- Think about something you would like to teach
- Check out the material
- Possibly suggest a course not offered that can be lead by your team!
- Commit to teaching min. 4 lessons

DCP:
2.5 hr commitment
per lesson taught

DWP:
3.5 hr commitment
per day taught

2

The process: application

Individual Sign-up

Congrats your company as agreed to let you sign up for volunteering individually!

- Sign up through our Global Volunteer form
<https://redischool.typeform.com/volunteer>
Select ReDI Location: NRW
- Hayley contacts you for a 1-1 meeting
- You decide which courses you're interested then schedule a meeting with Hayley!
- Hayley + you go over the courses, about ReDI, your availability over the semester
- Together we pick the best course for you to teach!
* Remember you don't teach alone, you're on a team and have support for other teachers + teacher's assistants that will be your future students
- Congrats you're a volunteer!

3

Corporate Organised Sign-up

Congrats your company as agreed to let you sign up for volunteering, and the company has an internal system to administrate corporate volunteers and hand over the personal information to ReDI!

- Establish your contact person to hand over personal information to ReDI (Hayley)
- ReDI needs the following information:
name, email, the city they are based, telephone as optional, course selection 1st and 2nd choices
- Information is then handed over to volunteer coordinator (Hayley) and she'll be in contact with each volunteer shortly with all of the information on the courses you're interested in
- Sign up for a 1-1 with Hayley
(optional, if email suits you more, that's fine!)
- Congrats you're a volunteer!

3

Individual Sign up: apply through a form!

Open: redischool.typeform.com/volunteer

Please make sure to check the following options!

ReDI location: NRW

1 → Which ReDI School location are you applying for? *

- A Berlin (online and on-site)
- B Munich (online and on-site)
- C NRW (online and on-site)
- D Copenhagen (onsite)
- E Aarhus (onsite)
- F Hamburg (mainly online)
- G Cyberspace (online)

Choose volunteer type We always need more Teachers :)

4 → There are several ways to volunteer at ReDI School. Which type of volunteering are you looking for? *

For volunteers in ReDI School **Berlin, Munich, NRW, Hamburg, Cyberspace**

Choose an option for you like

- A Teacher
- B Mentor
- C Career Workshop Trainer
- D Help designing and developing ReDI Connect and Talent Pool (RED Team)

Choose Program

27 → In **which program** would you like to teach?

For volunteer **teachers** in ReDI School **NRW**
Digital Career Program: mainly online
Digital Women Program: on-site in Düsseldorf

- A Digital Career Program
- B Digital Women Program

The process: onboarding

Curriculum planning / Onboarding

You can hold career workshops in the following topics:

- Meet the ReDI team + your teaching team
- Technical onboarding
- Go over curriculum
- Sign up for lessons
- Any additional questions answered

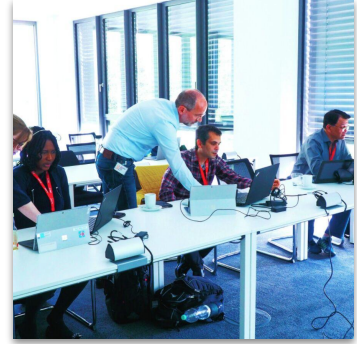
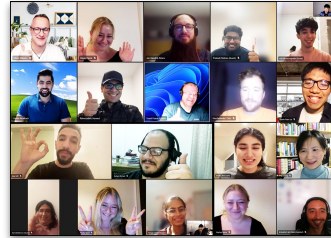
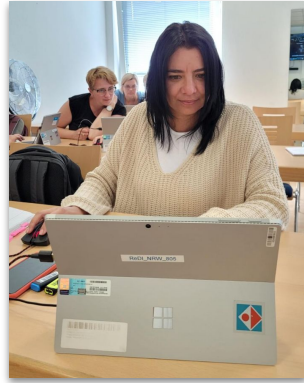
4

Semester Begins

Lessons begin!

- **DCP** Semester begins **September 11th** and ends **December 12th**
- **DWP** Semester begins **October 21st** and ends **December 12th**
- You have fun, you teach, you support!
- Join community events if you're in the area!
- Team meetings to share + receive student feedback

5



Courses

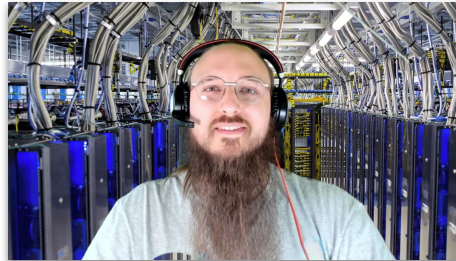
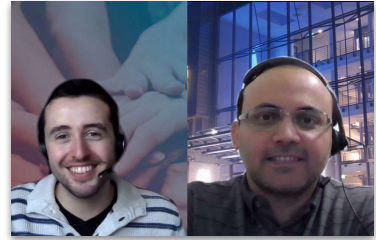
Infrastructure Basics Course in Fall 2022 at ReDI School NRW Learning Board

Warm-up
Mural practice
Tue, September 6

Network Sessions

Session #1
Network 101 Part 1
Tue, September 6

Session #2
Network 101 Part 2
Thu, September 8



Example of course types



Course Type	Course	Course Structure	Location
Corporate organised	Infrastructure Basics (Accenture lead course)	<ul style="list-style-type: none"> • Course content created by Accenture teachers • Only Accenture teachers • Teacher’s rotation is managed by a lead teacher (main contact) • ReDI supports student selection, teachers onboarding, technical onboarding, teachers meetings 	Online (taught remotely) Students join online and learn remotely
ReDI organised	Cloud Computing (Taught by corporate and non-corporate volunteer teachers)	<ul style="list-style-type: none"> • Course content created by Microsoft and coordinated by ReDI • Teachers from different companies • Teacher’s rotation is managed by ReDI • ReDI supports student selection, teachers onboarding, technical onboarding, teachers meetings 	Online (taught remotely) Students join online and learn remotely

Onsite courses in Düsseldorf for Women digital beginners



		Digital Women Program German	Digital Women Program English	Digital Women Program Ukrainian
Digital Literacy 1	Career Support	Computer im Alltag		
Digital Literacy 2		Computer für Arbeit	Computer for Work	Computer for Work
Advanced			Social Media Marketing	

 ReDI-organised courses  Career support (available in the future)

2 semesters per year, each student takes 1 course per semester, 1 semester = appx. 4 months, 1 course = 1 day per week

Course Overview and Teaching materials



Program	Location	Language	Course	Course Materials	In-Class Coding / Designing
DCP	Online	English	Introduction to Python	GitHub	VSCode
DCP	Online	English	Data Analytics	GitHub	Google Colab
DCP	Online	English	Machine Learning	GitHub	Jupyter notebooks or Google Colab
DCP	Online	English	HTML and CSS	GitHub	VS Code + Chrome
DCP	Online	English	JavaScript	GitHub	VS Code + Chrome
DCP	Online	English	React	GitHub	codesandbox & VS Code
DCP	Online	English	Infrastructure Basics	Organised by Accenture	No (theory only)
DCP	Online	English	Cloud Computing	GitHub	Azure Portal
DCP	Online	English	UX/UI Design Basics	PowerPoint in MS Teams	Figma
DCP	Online	English	UX/UI Design Intermediate	PowerPoint in MS Teams	Figma
DCP	Online	English	Salesforce Pathfinder Program	Salesforce will offer onboarding sessions for our teachers and provide us with material for two certifications: Salesforce Associate & Salesforce Administrator. We unfortunately are not allowed to share this material with externals	Trailhead
DCP	Online	English	AI Fundamentals	Mentioned in the course sheet	Azure Portal

Course Overview and Teaching materials



Program	Location	Language	Course	Course Materials	In-Class Coding / Designing
DWP	Onsite in Düsseldorf	German	Computer im Alltag	Course Material	Students learn how to use a laptop
DWP	Onsite in Düsseldorf	German	Computer für Arbeit	Course Material	Students learn how to use Google Workspace
DWP	Onsite in Düsseldorf	English	Computer for Work	Course Material	Students learn how to use Google Workspace
DWP	Onsite in Düsseldorf	Ukrainian	Computer for Work	Course Material	Students learn how to use Google Workspace
DWP	Onsite in Düsseldorf	English	Social Media Marketing	Course Material	Students learn about Marketing, specifically SMM

Timetable

Monday	Tuesday	Wednesday	Thursday	Saturday
Introduction to Python 19:00 – 21:00	Infrastructure Basics 18:30 – 20:30	Introduction to Python 19:00 – 21:00	Infrastructure Basics 18:30 – 20:30	Computer im Alltag DE (women) 10:00 – 13:30
Data Analytics 19:00 – 21:00	Cloud Computing 19:00 – 21:00	Data Analytics 19:00 – 21:00	Cloud Computing 19:00 – 21:00	Computer für Arbeit DE (women) 10:00 – 13:30
Machine Learning 19:00 – 21:00	AI Fundamentals (AI-900) 19:00 – 21:00	Machine Learning 19:00 – 21:00	HTML and CSS 19:00 – 21:00	Computer for Work EN (women) 10:00 – 13:30
UX/UI Design Basics 19:00 – 21:00	HTML and CSS 19:00 – 21:00	UX/UI Design Basics 19:00 – 21:00	JavaScript 19:00 – 21:00	Computer for Work UA (women) 14:30 – 18:00
UX/UI Design Intermediate 19:00 – 21:00	JavaScript 19:00 – 21:00		Salesforce Pathfinder* 19:00 – 21:00	Social Media Marketing EN (women) 14:30 – 18:00
	React 19:00 – 21:00			Social Events

Online
 Hybrid
 Onsite in Düsseldorf

*For the Salesforce Pathfinder course, we need volunteer teachers only for Thursdays

Mentors

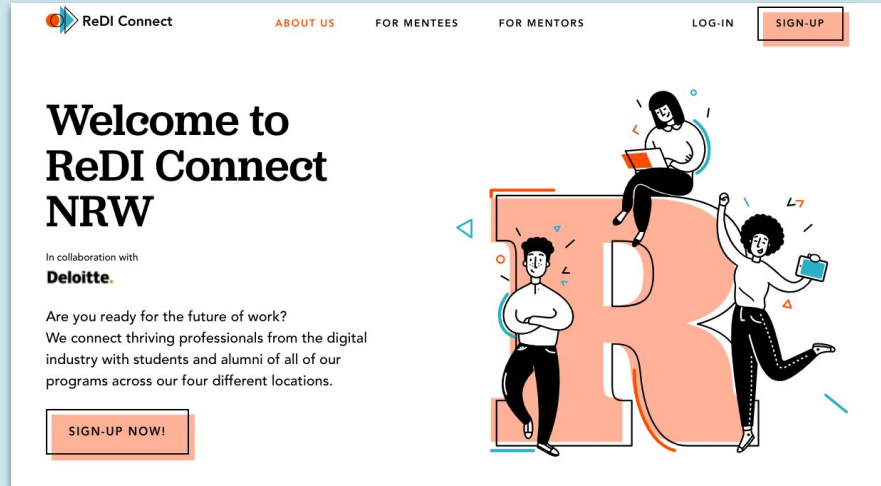
If you have limited time and want to help our students be successful in their career, join our mentorship program!

Our students need 1:1 advice from thriving professionals from the digital industry, like you!


1. Get career and personal advice and support
2. Get support with your ReDI Course/ Coding & technical skills
3. Grow your personal and professional network

Register as a mentor:

<https://connect.nrw.redi-school.org/>



The screenshot shows the landing page for ReDI Connect NRW. At the top, there is a navigation bar with the ReDI Connect logo, links for 'ABOUT US', 'FOR MENTEES', 'FOR MENTORS', 'LOG-IN', and a 'SIGN-UP' button. The main heading reads 'Welcome to ReDI Connect NRW'. Below this, it states 'In collaboration with Deloitte.' and asks 'Are you ready for the future of work? We connect thriving professionals from the digital industry with students and alumni of all of our programs across our four different locations.' A 'SIGN-UP NOW!' button is prominently displayed. To the right, there is a colorful illustration of three people interacting with a large orange letter 'R'. One person is sitting on top of the 'R' with a laptop, another is standing next to it with arms crossed, and a third is running towards it holding a briefcase.



HALIL ESMER, STUDENT OF THE DIGITAL CAREER PROGRAM, BERLIN

I joined the mentorship program in 2019. My mentor gave me important incentives how I can start a career in IT. He showed me how a recruiter would look at my application and how to create specific applications for each position I apply for.

The block features a portrait of Halil Esmer, a young man with a beard wearing a red polo shirt. To the right of the portrait is his name and title, followed by a short testimonial about his experience in the mentorship program. At the bottom of the testimonial, there are three small colored dots (grey, grey, red).



Career Trainers

Are you an expert in HR, recruiting and management? As a Career Trainer, you will be organising one of four Career Workshops to help students develop their soft skills.

- IT Market in Germany
- How to tune your CV
- Fine-tune your LinkedIn Profile
- Surviving the job interview

Students said they liked the following parts of the workshops...



The interactive aspect



What is strong CV

the practice session



The breakout rooms with the employees - that allowed to raise personal and practical career questions, and hear their own take as ppl from the infield.

listening the experience of other participants

Does it work?



Success stories of NRW students



Sayed Hashimi
IT-Network Consultant
Accenture

What did help you the most to find a new job?
My ReDI tech course

What courses did you graduate from in ReDI?
**Infrastructure Basics, Cloud Computing,
Internet of Things**



Adijat Ajoke Sulaimon
UX-UI Designer
Perfect-iD GmbH

What did help you the most to find a new job?
My ReDI mentor

What courses did you graduate from in ReDI?
**UX/UI Design Basics, UX/UI Design
Intermediate**

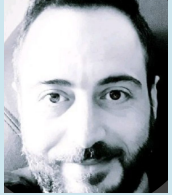
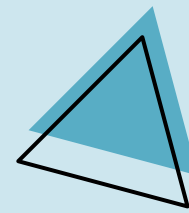


Mesut Gençtürk
Junior Cloud Consultant
Arvato Systems

What did help you the most to find a new job?
My ReDI mentor

What courses did you graduate from in ReDI?
**HTML and CSS, JavaScript, Infrastructure
Basics**

ReDI role models



Mohammad
ServiceNOW
Developer
Accenture



Rami
Full-stack Developer
kloeckner.i



Rita
Solutions Systems
Engineer
Cisco



Omar
Gründer der
App Bureaucrazy



Abdulsalam
Start up! Trainee
Deutsche Telekom



Amro
IT Consultant
Accenture



Natalia
Web Designer
Ellusion



Mohamed
Azubi
Fachinformatiker
ProSiebenSat.1



Abdullahi
Software Engineer
Moxa
Ada Fellowship
Allianz



Idlir
IT Support
Specialist /
Microsoft 365
Beck et al.



Parisa
Data Scientist
MHP - Porsche



Ferdous
Netzwerk-Admin.
Intel / Experis



Sajjad
Software Ingenieur
Amazon



Amr
Blockchain
Developer
Capgemini



Tung
Developer Associate
SAP



Yasaman
Business Analytics
Werkstudentin
Kloeckner.i



Welcome! VIPs visiting ReDI School



António Guterres
General Secretary
United Nations



Angela Merkel
Former Chancellor of Germany



Annette Widmann-Mauz
State Minister and Member of
the German Bundestag



Margrethe Vestager
EVP European Commission



Mark Zuckerberg
CEO, Facebook



Sheryl Sandberg
COO, Facebook



Ahmed Hussen
Minister of refugees,
migrants, integration
Canada



Are you ReDI?



Contact

Hayley Spire
Head of Community
Development

+49 1 76 64 36 14 45

volunteernrw@redi-school.org

www.redi-school.org

Apply as Volunteer!

Scan the QR code or open
<http://tiny.cc/redi-volunteer>
and apply as a volunteer!
**Please choose the ReDI
School location as NRW!**

