

# ROBINSON S.P.A.C.E.



ONE	YEAR
-----	------



**A look  
back at  
our first  
year.**





# We took a risk.

In August of last year, a small group of us took a risk and signed the lease for 104 Robinson St. Going into it, we knew it was going to be a \*big\* project and that we would learn a lot. But we felt the need to connect with each other and share space.

We found this SPACE which was much bigger than we could imagine. Almost a year later, its proven that this need to connect was felt by many others.





# Our Mission.

Is to build **community power** by maintaining an accessible venue for events, meetings, workshops, fundraisers, or other needs of local community organizations or not-for-profit groups that are **fighting for a more equitable and transformative Los Angeles.**



**The  
impact.**



**Over 3,000  
Angelenos have  
walked through  
the doors**



**OUR  
IMPACT**





# 40 key partners use the space regularly



## OUR IMPACT









**Some  
highlights.**





# Youth led orgs and movements



**HIGH-  
LIGHTS**







# Unhoused led orgs and events



4/28  
6:30PM

PRESENTS A  
CANDIDATE TOWNHALL WITH:

Albert Corado Council District 13	Gill Faisal City Attorney	Kenneth Mejia City Controller	Bryant Odega Council District 15	Gina Viola Mayor

"NOTHING FOR US WITHOUT US"      RSVP: [bit.ly/TownHallWTU](https://bit.ly/TownHallWTU)



# Filipino and Historic Filipinotown focused



**HIGH-  
LIGHTS**





# Community Vendors



HIGH-  
LIGHTS







# Game changers and Rock N' Rollers



**HIGH-  
LIGHTS**







## HIGH- LIGHTS



# CIVIC ENGAGEMENT

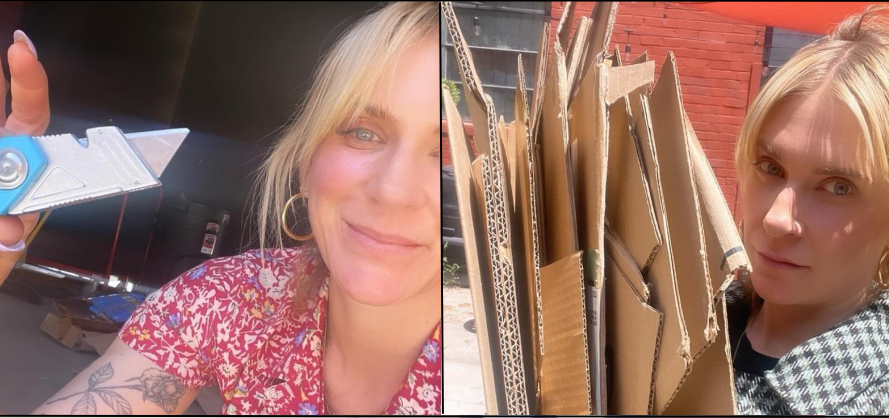
The Robinson SPACE served as a resource to break barriers and increase accessibility by providing space for traditionally under resourced candidates and overlooked constituents to engage locally. Although this is a small portion of the efforts that contributed to the outcomes of the recent elections, we are proud to have supported closing gaps between historically disenfranchised community members and policymakers.

# Making the SPACE.





# Behind the scenes



# Cost of doing business

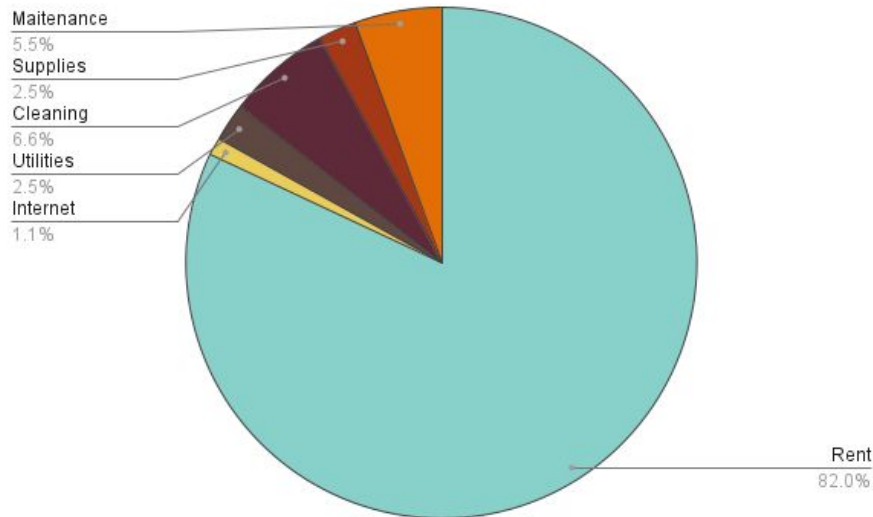


**PER MONTH: \$6,000**

Rent	\$4,800
Internet	\$65
Utilities	\$144
Cleaning	\$384
Supplies	\$144
Maintenance	\$320
<b>Total</b>	<b>\$6,101</b>

**ANNUALLY: \$75,000**

(includes ~\$3,000 of annual costs such as web domains, insurance, licensing)







# Fundraising plan



**GRANTS. DONATIONS.** Sliding scale suggested donation for use of space and biannual donation drives. **MEMBERSHIP.** Patreon to launch soon! Aiming for 200 members.

FUNDRAISING GOALS BREAKDOWN		
	Month	Annual
Total	\$7,531	\$90,372
Membership	\$1,500	\$18,000
Grants	\$3,333	\$40,000
Donations	\$2,698	\$17,372





# HOW WE WANT TO GROW



Living garden - mutual aid hub

Reinforce our efforts with local community

Expanding Our Collective

Grow our programming -  
speaker stipends

Grow our dissemination and  
reach

Eliminate our reliance on  
private events

# HOW WE CAN GROW

## VOLUNTEERS

We need volunteers to support events, general space support, and programming efforts.

## SHARE OUR MEMBERSHIP

We will launch our patreon in the next month. Please share with your network.

## HELP FUNDRAISING

We plan on doing biannual fundraising drives and we would love your support.





