

# DELUXE YAKINIKU SET MENU



**Tajimaya Karubi Set** \$25.90  
Australia Wagyu Short Ribs (60gm)  
Australia Wagyu Flap Meat (60gm)



**Kimchi Negi Shio Set** \$22.90  
US Kurobuta Belly (60gm)  
Australia Wagyu Short Plate (60gm)



**Garlic Miso Set** \$19.90  
Iberico Pork Collar (60gm)  
Iberico Pork Jowl (60gm)



**Teriyaki Sesame Set** \$16.90  
Chicken Thighs (100gm)  
Fresh Salmon (50gm)

## ALA CARTE



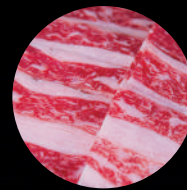
**Gyu Tan  
Negi Shio (100gm)**  
\$14.90



**Australian Wagyu  
Oysterblade (100gm)**  
\$16.90



**Australian Wagyu Chuck  
Short Ribs (100gm)**  
\$16.90



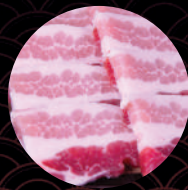
**Australian Wagyu  
Karubi Plate (100gm)**  
\$16.90



**A5 Ibaraki  
Striploin (60gm)**  
\$29.90



**A5 Ibaraki  
Karubi Plate (60gm)**  
\$19.90



**US Kurobuta  
Belly (60gm)**  
\$10.90



**US Kurobuta  
Collar (60gm)**  
\$10.90



**Teriyaki  
Chicken (100gm)**  
\$9.90

**MAKE IT A SET**

**\$4.90**

Includes miso soup  
and rice.