

Cottam Solar Project and West Burton Solar Project

Phase One Community Consultation Leaflet
November 2021



Introduction

Welcome to our phase one consultation on our early-stage proposals for two new solar and energy storage projects that would cross the county border between Lincolnshire and Nottinghamshire.

These proposals involve the generation of renewable power through solar photovoltaic (PV) panels. This clean energy would then be connected to the National Grid at Cottam and West Burton Power Stations with the facility to store some of this energy on site for when it is needed most.

The aim of our phase one consultation is to introduce ourselves, present our emerging proposals at this early stage, set out the opportunity for the projects, and receive feedback from the community to help identify and understand any local impacts. We are also keen to hear about other potential local needs or initiatives that we could facilitate or deliver directly, and we look forward to receiving your suggestions through the consultation.

Our consultation starts on **Wednesday 03 November 2021**. It will run for 6 weeks, closing on **Wednesday 15 December 2021**.

This consultation leaflet introduces who we are, our proposals for the Cottam and West Burton Solar Projects, and how you can get involved in our phase one consultation.

Feedback can be provided through our website, completing and submitting a feedback form, or contacting us through our communication channels. More information on this is set out on pages 13-14 of this leaflet.

About us

Cottam and West Burton Solar Projects are being developed by Island Green Power, who are a leading international developer of renewable energy projects, established in 2013.

Island Green Power has delivered 26 solar projects worldwide totalling more than 1GW of capacity. This includes 14 solar projects in the UK and Republic of Ireland. Their mission is to increase solar energy usage, making more renewable energy possible and saving thousands of tonnes of CO₂ in the process.

Island Green Power is committed to responsible land use and believe that the development and delivery of large-scale solar farms can be achieved in harmony with their surroundings.



Island Green Power solar project in Trethosa, Cornwall

The Opportunity

From October 2024, Great Britain will no longer use coal to generate electricity. As part of this, the existing coal powered Cottam and West Burton Power Stations are due to close next year (2022).

At the same time, we know demand for electricity is continuing to increase and that the UK faces some of the highest electricity costs in Europe. There is a clear need for **renewable, affordable, and reliable** energy.

The decommissioning of Cottam and West Burton Power Stations presents the opportunity to repower the region with clean, green energy.

Opportunities of the Cottam and West Burton Solar Projects include:



The Cottam Solar Project could replace around 30% of the former generation capacity of the coal powered Cottam Power Station and generate enough clean energy to power 180,000 homes



The West Burton Solar project could replace around 24% of the generation capacity of the coal powered West Burton Power Station and generate enough clean energy to power 144,000 homes



Supporting regional and national targets for reducing carbon emissions to net zero by 2050



Improving energy resilience by diversifying energy production and storing energy for when it is needed most



Contributing towards strategic improvements to local ecology and biodiversity



Delivering affordable energy, as the electricity generated from solar is already cheaper than electricity generated from fossil fuels and the project would be subsidy free without taxpayer funding

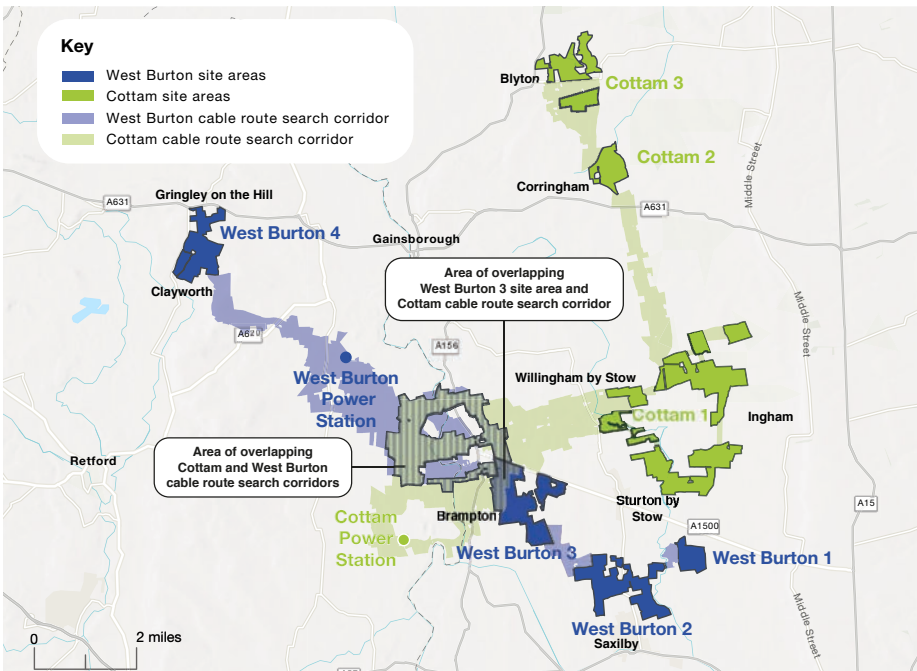
Facilitating or directly delivering other potential local needs or initiatives, which could be suggested by you through our consultation

The Projects

Both projects are named after their grid connection points at the existing National Grid substations at the Cottam Power Station and West Burton Power Station.

We recognise the proximity of these projects and are looking to develop the proposals in parallel.

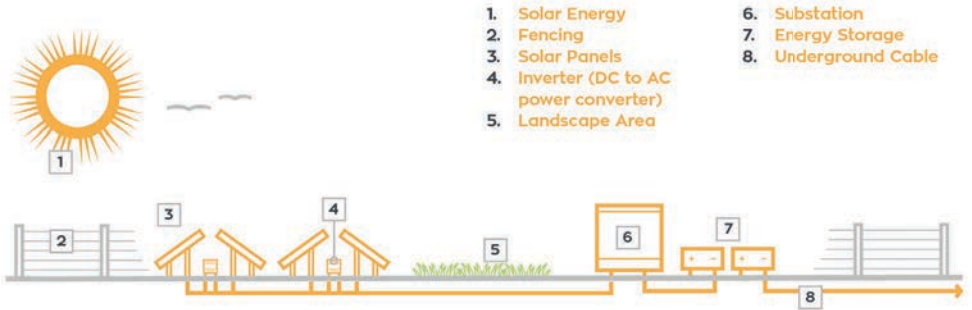
Each of the projects involves a series of areas of land which would host ground-mounted solar panels and be connected by underground cables. We are currently working with relevant landowners to refine the search corridors for the routes of these cables. Our cable routes will avoid residential properties and businesses, as well as other important local areas, such as heritage features or Sites of Special Scientific Interest (SSSIs).



Map of the proposed Cottam and West Burton site areas and cable route search corridors connecting to the National Grid

Although the exact technology and type of solar arrays to be used for the projects have yet to be decided, in part due to their rapid and ongoing development, the figure below shows the typical components involved in a solar project. For these projects, the infrastructure is spread over multiple sites.

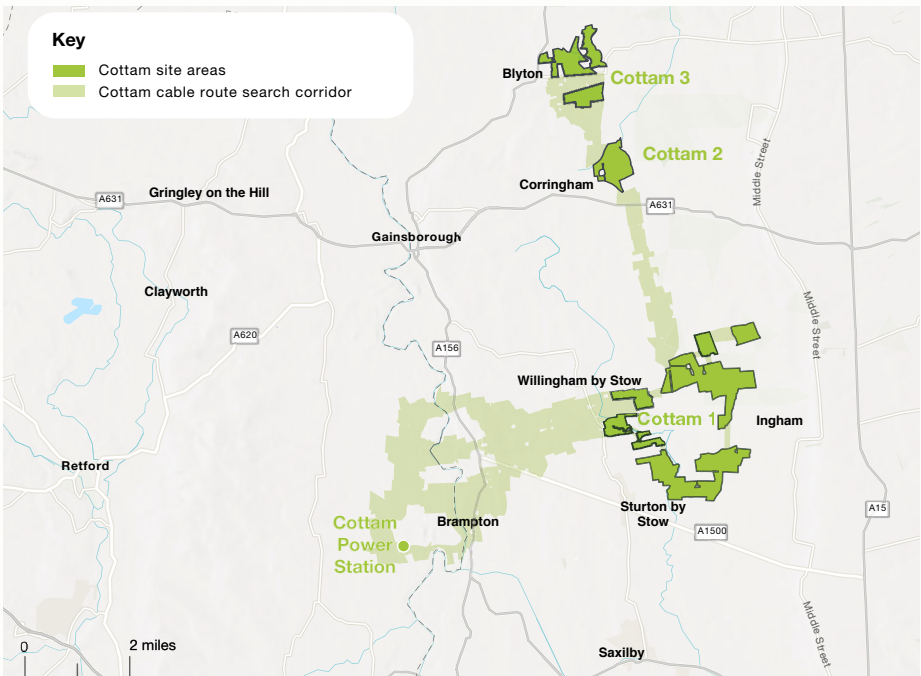
Components of a typical solar project



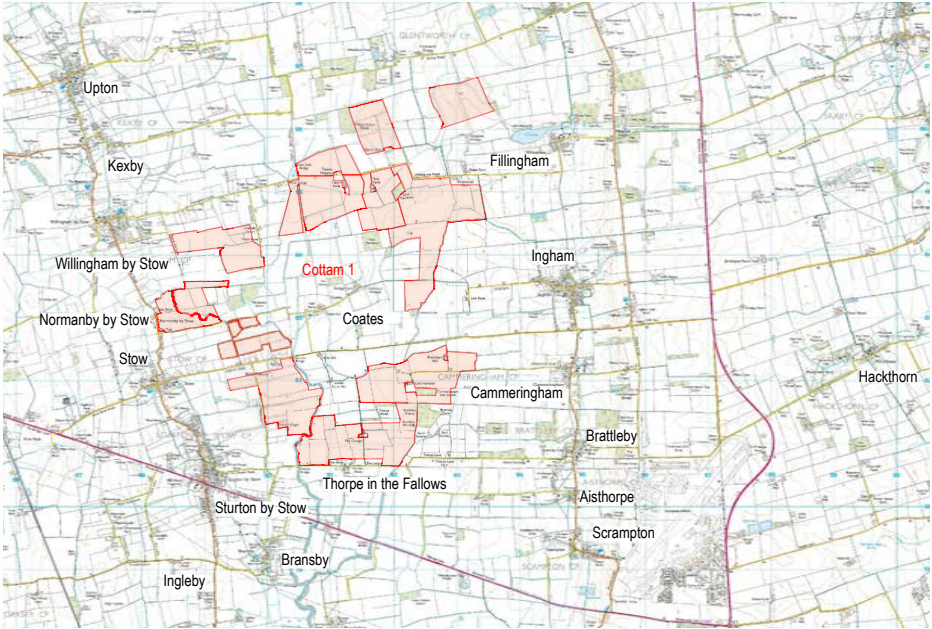
Cottam Solar Project

The proposals for Cottam Solar Project involve a series of three areas of land (these sites are named Cottam 1-3) which would host the ground-mounted solar panels to be connected by underground cable. The project crosses the county boundary between Lincolnshire and Nottinghamshire.

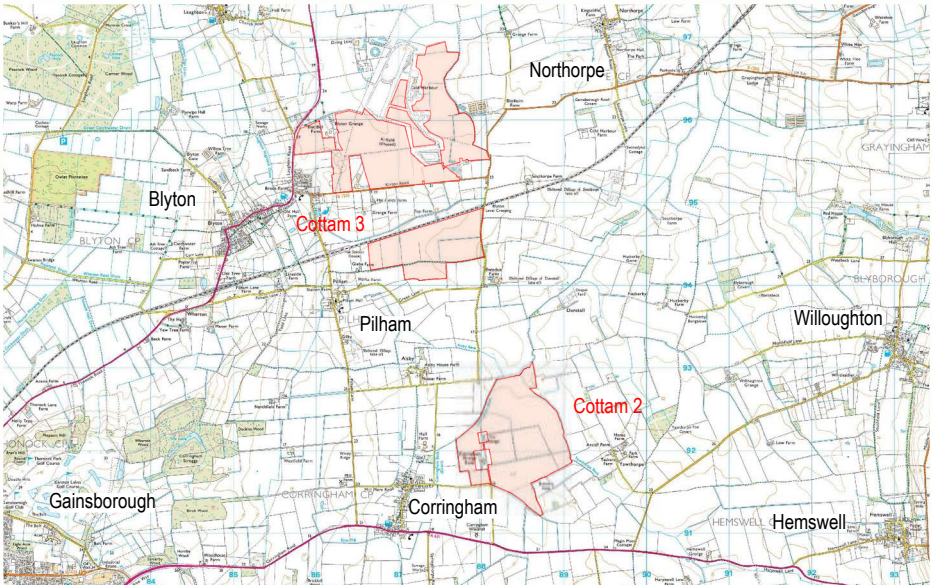
The project would generate around 600 MW of renewable energy, as well as having the capacity to store this energy for when it is needed most. The maps below show the proposed areas for solar development.



Map of the proposed Cottam site areas and cable route search corridor connecting to the National Grid



Cottam 1 (around 875 hectares)

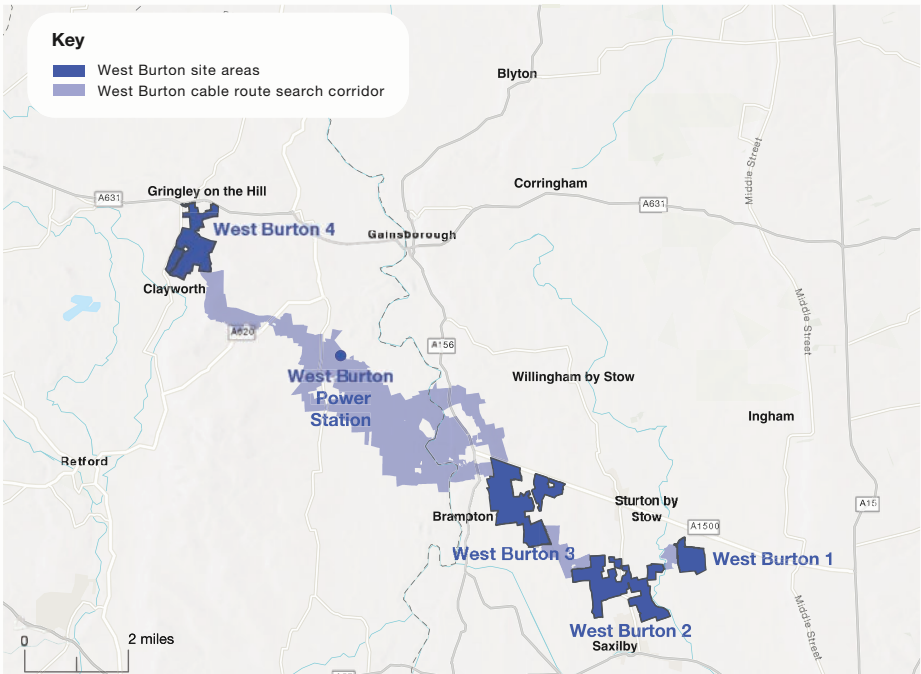


Cottam 2 (around 132 hectares) and Cottam 3 (around 138 hectares)

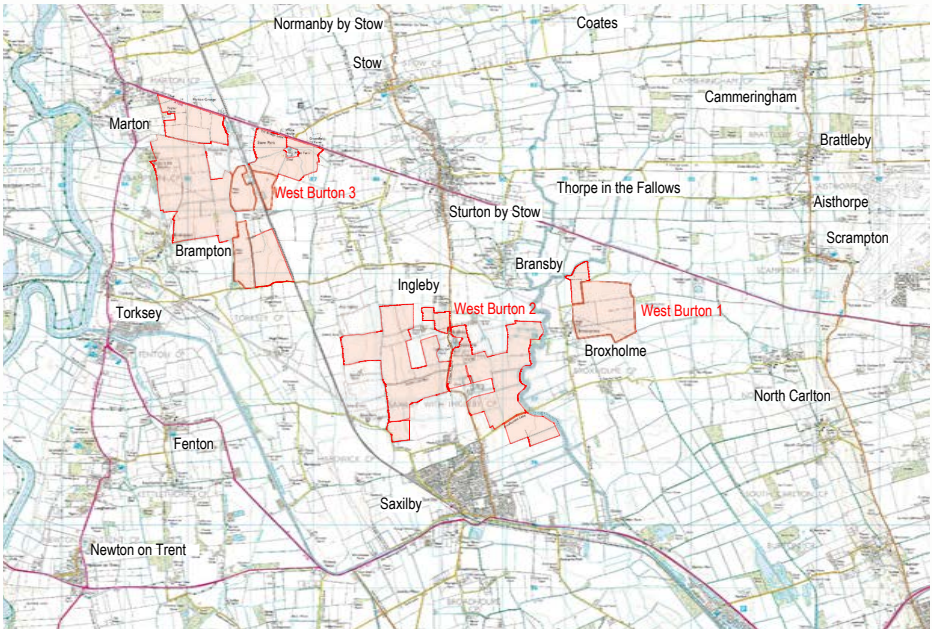
West Burton Solar Project

The proposals for West Burton Solar Project involve a series separate land parcels. The sites which would host the ground-mounted solar panels to be connected by underground cable are named West Burton 1-4. The project also crosses the county boundary between Lincolnshire and Nottinghamshire.

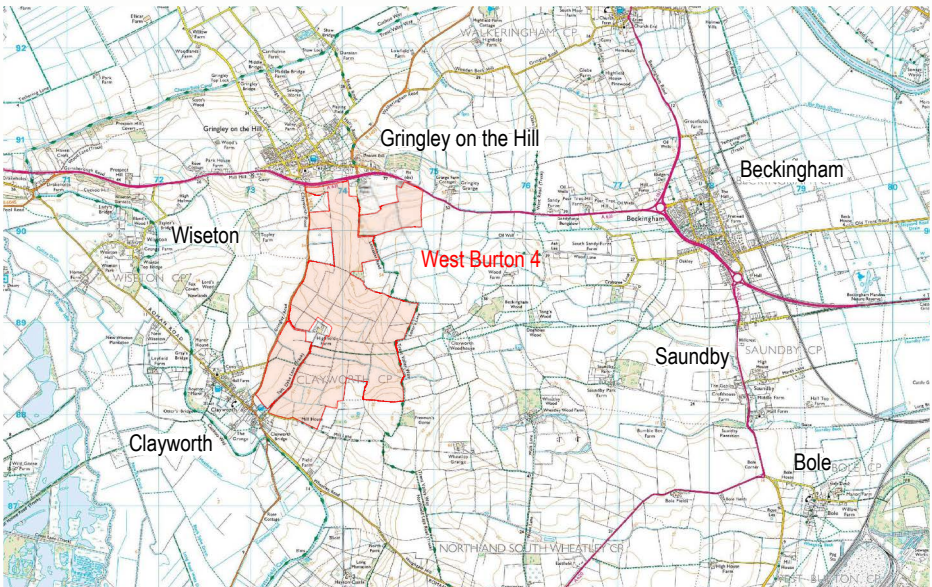
The project would generate around 480 MW of renewable energy and have the facility to store 20 MW of energy for when it is needed most. The maps below show the proposed areas for solar development and connecting to the National Grid.



Map of the proposed West Burton site areas and cable route search corridor connecting to the National Grid



West Burton 1 (around 90 hectares), West Burton 2 (around 330 hectares) and West Burton 3 (around 371 hectares)



West Burton 4 (around 248 hectares)

The Planning Process

Given the amount of renewable energy each of the projects would generate, they will each be classified as a separate Nationally Significant Infrastructure Project (NSIP). This means that, to gain permission to build both projects, we will be submitting two Development Consent Order (DCO) applications, one for each project, to the Planning Inspectorate (PINS).

For each application to be accepted, we must satisfy PINS that our pre-application consultation for the projects, both with statutory consultees (such as the local planning authorities) and with local communities, has been undertaken properly in accordance with the relevant legislation (the Planning Act 2008). The applications will be determined by the Secretary of State for the Department for Business, Energy, and Industrial Strategy (BEIS).

You can read more information about the DCO planning process on the PINS website here: <https://infrastructure.planninginspectorate.gov.uk/application-process/the-process/>

Our DCO applications are planned to be submitted in Q4 2022. Prior to this we will be commencing a series of community and statutory consultations on our plans for the projects.

Although we will be submitting two DCO applications we recognise the proximity of these projects and are looking to develop the proposals in parallel. This includes coordinating our consultation activities on both projects with joint information events and opportunities to provide feedback so that communities interested in both projects don't have to submit feedback twice.

We are committed to working with communities throughout the development of our proposals for both projects. Throughout the process we will be engaging with communities and plan on presenting and refining our proposals across two phases of consultation. Our phase one community consultation starts on **Wednesday 03 November 2021**. It will run for over 6 weeks, closing on **Wednesday 15 December 2021**.

Ahead of our phase two consultation, which will be a statutory consultation, we will also publish a Statement of Community Consultation (SoCC) for each project, outlining how we are engaging throughout the development of both the Cottam and West Burton Solar Projects, and how we will seek and consider feedback as part of our phase two consultation. Our second phase of consultation will include sharing the findings of our Preliminary Environmental Information Report (PEIR).

Have Your Say

Our phase one consultation is intended to create open communication channels with local communities. We value local knowledge and are confident that this consultation will result in a strong set of proposals that respects the neighbouring community while generating clean energy. Learn more about our proposals and provide your feedback to our phase one consultation in the following ways:



Join us at our information events to meet the project team, learn about our proposals, and provide your feedback



Visit our dedicated project websites to view the latest project information and provide your feedback



Contact our communication lines via phone, post or email

Details of our project websites and communication lines are available on the back page of this leaflet.

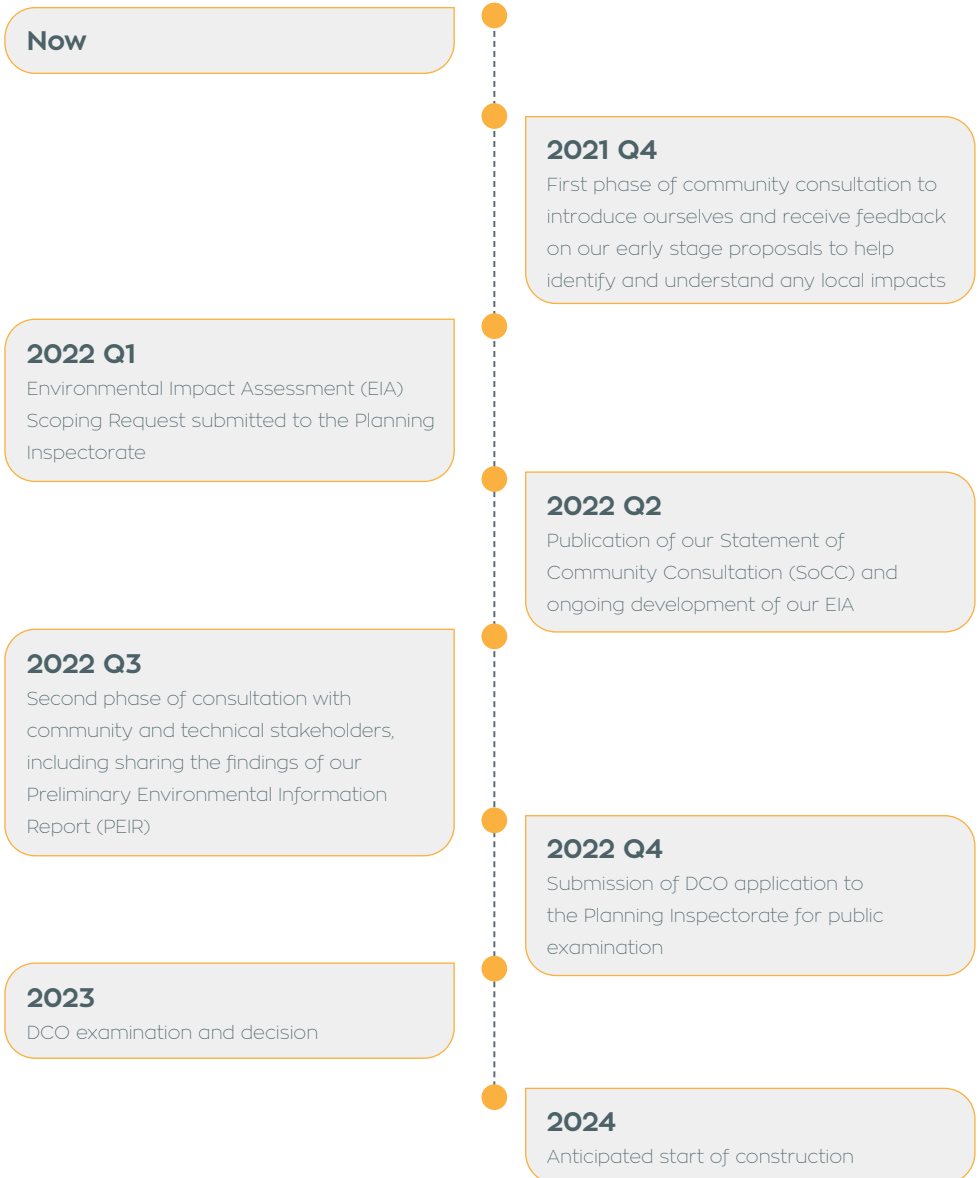
Phase One Information Events

As part of our phase one consultation, we are holding a series of five public information events in the local area. These offer the opportunity to view and discuss our plans for both the Cottam and West Burton Solar Projects with members of the project team.

These events will be an early opportunity to view our emerging proposals for the projects and provide your views. We encourage anyone with an interest in either, or both, of the solar projects to come along.

Event	Date	Time
Gringley on the Hill Community Centre , West Wells Lane, Gringley on the Hill, DN10 4QY	Tuesday 16 November	2:30pm - 6:30pm
Willingham Village Hall , High Street, Willingham by Stow, DN21 5JZ	Thursday 18 November	10:30am - 2:30pm
Marton and Gate Burton Village Hall , Trent Port Road, Marton, DN21 5AR	Saturday 20 November	12:30pm - 4:30pm
Blyton Memorial Hall , Church Lane, Blyton, DN21 3JZ	Wednesday 24 November	2:30pm - 6:30pm
Saxilby Village Hall , High Street, Saxilby, LN1 2HA	Thursday 25 November	10:30am - 2:30pm
Or join our webinar by video call or by phone. Get in touch to register.	Tuesday 30 November	6:30pm - 7:30pm

Project Timeline



All dates are indicative and remain subject change

Get in Touch


We want to keep you informed and hear your views on the Cottam and West Burton Solar Projects.

We have set up dedicated project websites, email addresses and Freephone information lines for both Cottam and West Burton Solar Projects. Our communication lines will be available throughout the phase one consultation and will remain open after the consultation period has closed on 15 December. If you have any questions about either project, please don't hesitate to contact the project team using the details below.

Cottam Solar Project

 **Visit our website:** www.cottamsolar.co.uk

 **Email:** info@cottamsolar.co.uk

 **Call:** 0808 1691848


 **Write to:** FREEPOST: CAWB Solar Projects



West Burton Solar Project

 **Visit our website:** www.westburtonsolar.co.uk

 **Email:** info@westburtonsolar.co.uk

 **Call:** 0808 1691858

 **Write to:** FREEPOST: CAWB Solar Projects



If you would like this document in large print, audio or braille formats, please contact us using the details above.

All graphics and maps in this document are for illustrative purposes.