

**TABLE R401.2(a)**  
FOR USE WITH SOLS CONTAINING EFFECTIVE PLASTICITY INDEX OF 3-16<sup>2</sup>

AREA OF TOTAL REINFORCEMENT (SQUARE FEET)	NUMBER OF STORIES	DEPTH	MINIMUM WIDTH OF SLAB (INCHES)	SIZE & SPACING OF REINFORCING BARS (TOP & BOTTOM)	DEPTH OF CONCRETE COVER (INCHES)	MINIMUM REBAR SIZE & SPACING OF REINFORCEMENT
UP TO 7,400 SQ. FT.	1	24'	12	2-#4	8/8	2-#4
	2	24'	12	2-#5 or 3-#4	8/8	2-#5 or 3-#5
	3	24'	12	2-#5 or 3-#4	12/12	2-#5 or 3-#5
7,400-15,000 SQ. FT.	1	24'	12	2-#5 or 3-#4	8/8	2-#5
	2	24'	12	2-#5 or 3-#4 or 2-#5	10/10	2-#5 or 3-#4
	3	24'	12	2-#5	12/12	3-#5
15,000 SQ. FT. UNDESIGNATED	1	24'	12	2-#5	12/16	2-#5
	2	24'	12	2-#5	12/16	2-#5
OVER 15,000 SQ. FT.	RESIDENTIAL DESIGN PROFESSIONAL REQUIRED: 6:1					

a) Reinforcement required top and bottom of footing in accordance with ACI-318  
 b) At intersections and corners, the #5 reinforcing bars can be tied using two bonded #4 L's with minimum leg length of 3'  
 c) Design Professionals are required to be licensed as an Architect or Engineer in the State of Texas in accordance with applicable laws  
 d) Covering of Over 5,000 sq. ft. - Designed by a Residential Design Professional approved by the City of Amarillo Building Official

**TABLE R602.4(2)**  
CEILING JOIST SPANS FOR COMMON LUMBER SPECIES (UNINHABITABLE ATTICS WITH LIMITED STORAGE, LIVE LOAD = 10 PSF, L/A, 240)

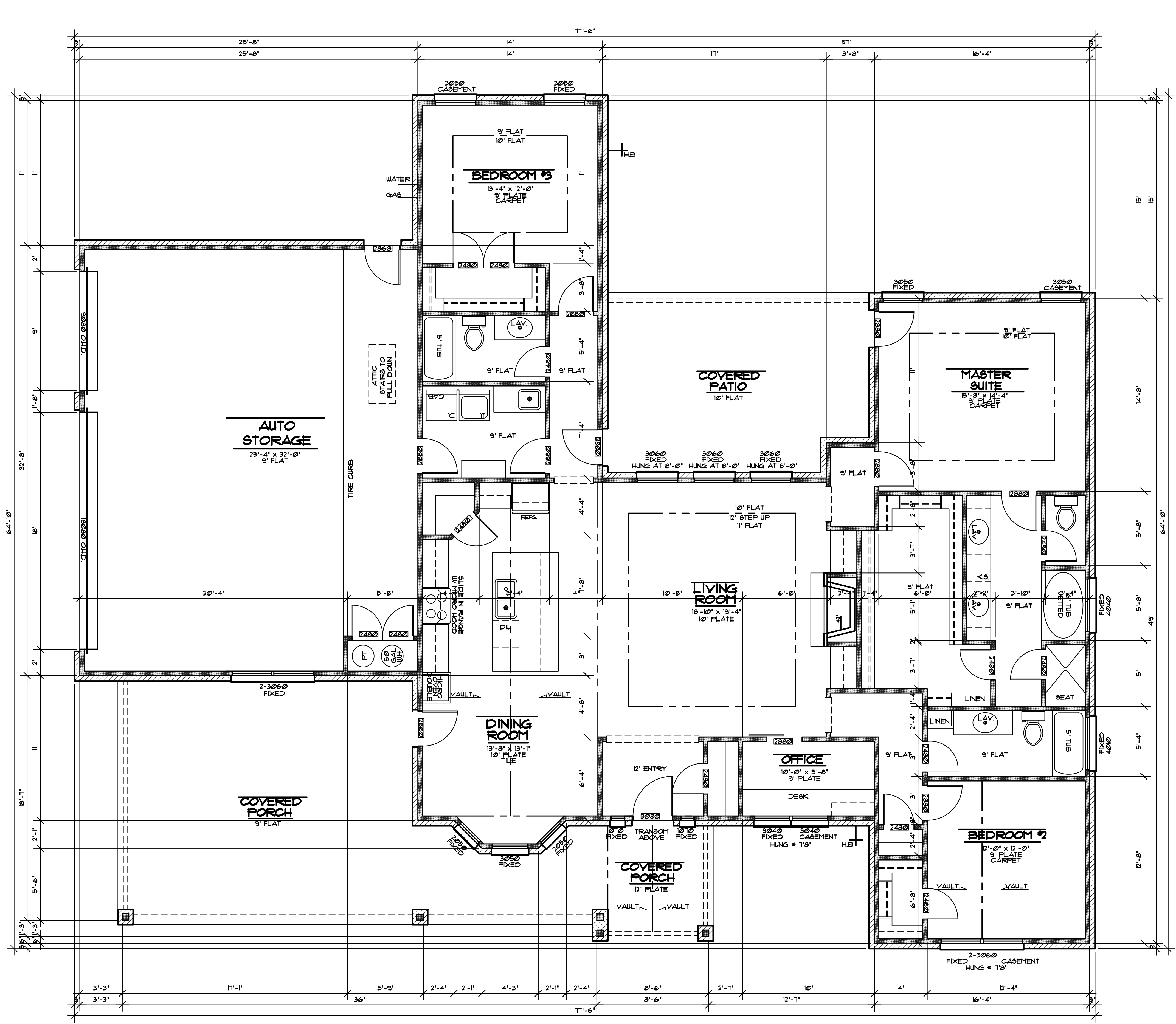
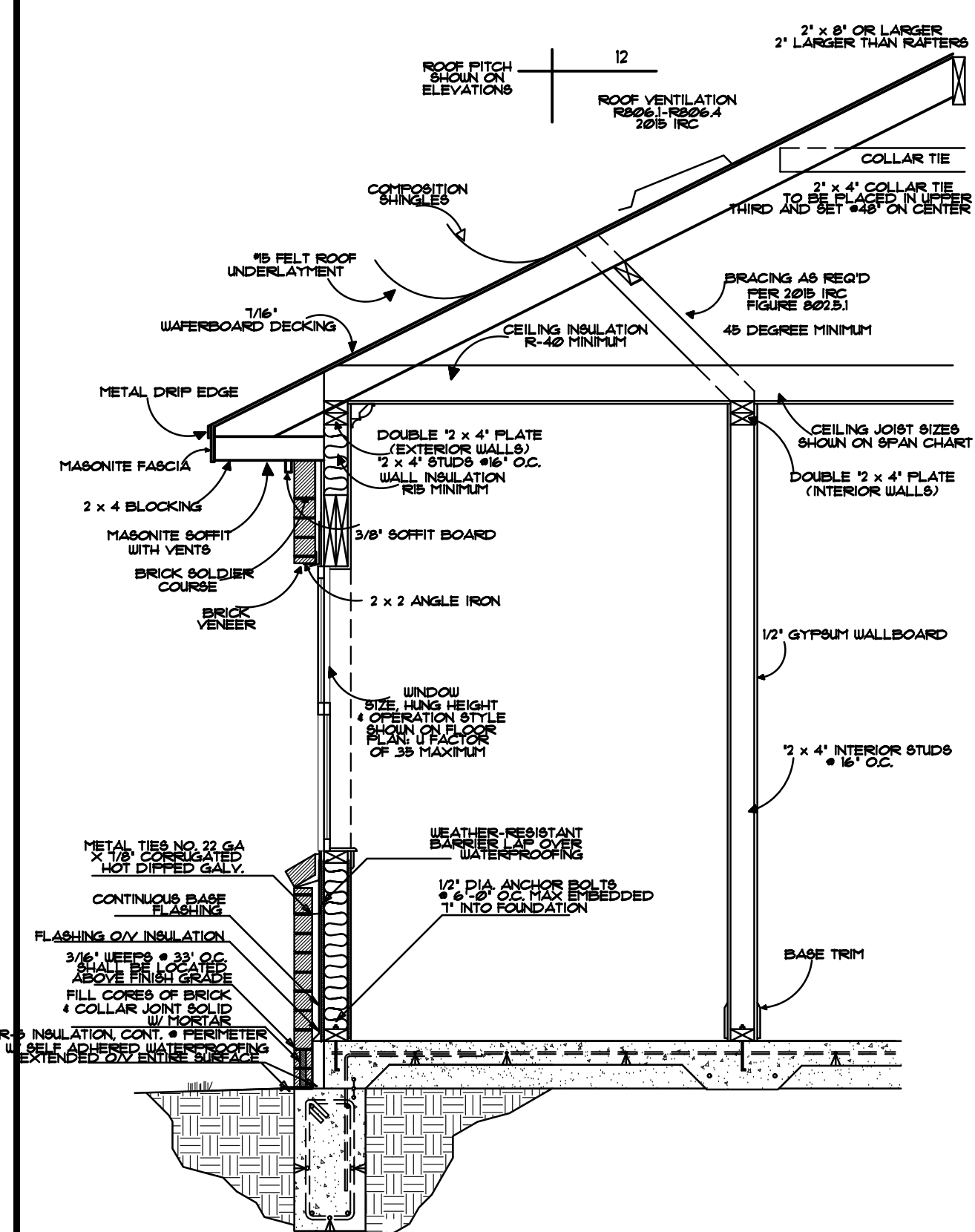
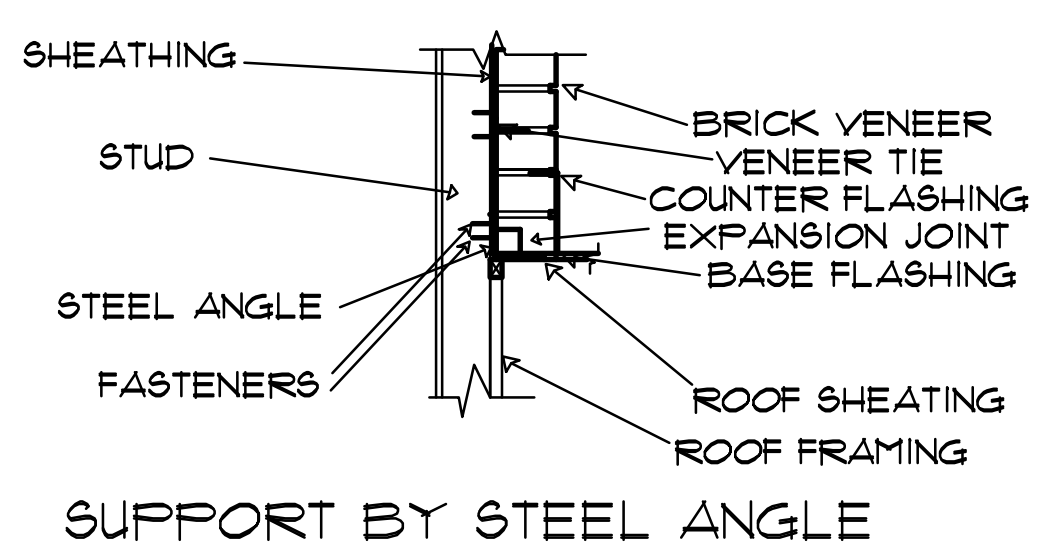
2 x 4	2 x 6	2 x 8	2 x 10	
SPECIES AND GRADE	12' OC 16' OC 24' OC 32' OC 40' OC 48' OC 56' OC 64' OC 72' OC 80' OC 88' OC 96' OC 104' OC 112' OC 120'	12' OC 16' OC 24' OC 32' OC 40' OC 48' OC 56' OC 64' OC 72' OC 80' OC 88' OC 96' OC 104' OC 112' OC 120'	12' OC 16' OC 24' OC 32' OC 40' OC 48' OC 56' OC 64' OC 72' OC 80' OC 88' OC 96' OC 104' OC 112' OC 120'	12' OC 16' OC 24' OC 32' OC 40' OC 48' OC 56' OC 64' OC 72' OC 80' OC 88' OC 96' OC 104' OC 112' OC 120'
#2 HEM FIR	9'-2" 8'-4" 7'-1" 6'-5" 5'-8" 5'-1" 4'-5" 3'-10" 3'-3" 2'-8" 2'-1" 1'-6" 1'-0" 0'-5" 0'-0"	11'-1" 10'-6" 9'-2" 8'-7" 7'-3" 6'-8" 5'-4" 4'-10" 3'-7" 2'-11" 1'-11" 1'-1" 0'-6" 0'-1"	13'-1" 12'-8" 11'-4" 10'-11" 8'-7" 7'-4" 6'-0" 4'-7" 3'-4" 2'-10" 1'-10" 0'-10" 0'-5" 0'-0"	15'-1" 14'-8" 13'-4" 12'-11" 10'-7" 9'-4" 8'-0" 6'-7" 5'-4" 4'-0" 3'-0" 2'-0" 1'-5" 1'-0"

**TABLE R602.4(1)**  
CEILING JOIST SPANS FOR COMMON LUMBER SPECIES (UNINHABITABLE ATTICS WITHOUT STORAGE, LIVE LOAD = 10 PSF, L/A, 240)

2 x 4	2 x 6	2 x 8	2 x 10	
SPECIES AND GRADE	12' OC 16' OC 24' OC 32' OC 40' OC 48' OC 56' OC 64' OC 72' OC 80' OC 88' OC 96' OC 104' OC 112' OC 120'	12' OC 16' OC 24' OC 32' OC 40' OC 48' OC 56' OC 64' OC 72' OC 80' OC 88' OC 96' OC 104' OC 112' OC 120'	12' OC 16' OC 24' OC 32' OC 40' OC 48' OC 56' OC 64' OC 72' OC 80' OC 88' OC 96' OC 104' OC 112' OC 120'	12' OC 16' OC 24' OC 32' OC 40' OC 48' OC 56' OC 64' OC 72' OC 80' OC 88' OC 96' OC 104' OC 112' OC 120'
#2 HEM FIR	11'-1" 10'-6" 9'-2" 8'-7" 7'-3" 6'-8" 5'-4" 4'-10" 3'-7" 2'-11" 1'-11" 1'-1" 0'-6" 0'-1"	13'-1" 12'-8" 11'-4" 10'-11" 8'-7" 7'-4" 6'-0" 4'-7" 3'-4" 2'-10" 1'-10" 0'-10" 0'-5" 0'-0"	15'-1" 14'-8" 13'-4" 12'-11" 10'-7" 9'-4" 8'-0" 6'-7" 5'-4" 4'-0" 3'-0" 2'-0" 1'-5" 1'-0"	17'-1" 16'-8" 15'-4" 14'-11" 12'-7" 11'-4" 10'-0" 8'-7" 7'-4" 6'-0" 5'-0" 4'-0" 3'-5" 3'-0"

**TABLE R602.3(2)**  
RAFTER SPANS FOR COMMON LUMBER SPECIES (ROOF LIVE LOAD = 20 PSF, CEILING ATTACHED TO RAFTERS, L/A, 240)

2 x 4	2 x 6	2 x 8	2 x 10	
SPECIES AND GRADE	12' OC 16' OC 24' OC 32' OC 40' OC 48' OC 56' OC 64' OC 72' OC 80' OC 88' OC 96' OC 104' OC 112' OC 120'	12' OC 16' OC 24' OC 32' OC 40' OC 48' OC 56' OC 64' OC 72' OC 80' OC 88' OC 96' OC 104' OC 112' OC 120'	12' OC 16' OC 24' OC 32' OC 40' OC 48' OC 56' OC 64' OC 72' OC 80' OC 88' OC 96' OC 104' OC 112' OC 120'	12' OC 16' OC 24' OC 32' OC 40' OC 48' OC 56' OC 64' OC 72' OC 80' OC 88' OC 96' OC 104' OC 112' OC 120'
#2 HEM FIR	9'-2" 8'-4" 7'-1" 6'-5" 5'-8" 5'-1" 4'-5" 3'-10" 3'-3" 2'-8" 2'-1" 1'-6" 1'-0" 0'-5" 0'-0"	11'-1" 10'-6" 9'-2" 8'-7" 7'-3" 6'-8" 5'-4" 4'-10" 3'-7" 2'-11" 1'-11" 1'-1" 0'-6" 0'-1"	13'-1" 12'-8" 11'-4" 10'-11" 8'-7" 7'-4" 6'-0" 4'-7" 3'-4" 2'-10" 1'-10" 0'-10" 0'-5" 0'-0"	15'-1" 14'-8" 13'-4" 12'-11" 10'-7" 9'-4" 8'-0" 6'-7" 5'-4" 4'-0" 3'-0" 2'-0" 1'-5" 1'-0"



**AREAS:**

FIRST FLOOR L.A.	2220 SQ. FT.
GARAGE	873 SQ. FT.
COVERED PORCH	572 SQ. FT.
REAR PATIO	261 SQ. FT.
TOTAL UNDER ROOF	3926 SQ. FT.
ALL AREAS APPROXIMATE	

**FLOOR PLAN**

SCALE: 1/4" = 1'-0"

**DRAWN BY:**  
**RENAISSANCE DESIGN**  
 ZACHARY SALDIYAR  
 6666 AMARILLO BLVD. W  
 AMARILLO, TX  
 79106 (806) 510-3489

**A NEW RESIDENCE BY:**  
**B&M AMARILLO HOMES**  
 910 COPPER CREEK  
 AMARILLO, TX

**REVISIONS:**

**PAGE#**  
 48

**PLAN #1929**  
**DATE 10/21/21**