

Erosion & Sediment Control



Stabilize bare soil areas.

1

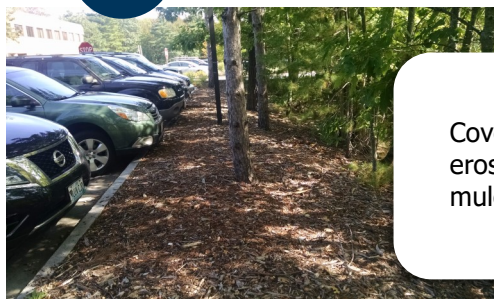
Revegetate area.



Add loam, regrade, and reseed.

2

Protect heavy-use areas.



Cover areas with erosion control mulch or riprap.

3

Reinforce areas.



Prevent exposing soil.

4

Divert runoff.



Send runoff to stormwater systems or reinforced areas.

5

Capture runoff.



Collect runoff in cisterns, rain gardens, or roof dripline trenches.



Long Creek Watershed Management District

Implemented with Assistance from:
Cumberland County Soil & Water Conservation District
35 Main Street, Suite 3, Windham, ME 04062
(207) 892-4700 | www.restorelongcreek.org