

tradizione italiana, amore per le cose belle,  
expertise artigiana radicata nella storia, culla  
del rinascimento, gusto per la qualità: tutto  
questo è

**caporali**  
**2016**



**ITALIAN IRON LAB**





Leader nella lavorazione del ferro battuto, **Caporali** nasce dalla tradizione italiana, dall'amore per le belle cose, dalla cultura del rinascimento, dal gusto per la qualità. I suoi prodotti si adeguano nel tempo agli stili e alla domanda dei suoi clienti senza perdere il gusto per la tradizione grazie ad **Italian Iron Lab**: un laboratorio interno di design e produzione in cui sviluppo, innovazione ed esplorazione di tecniche contemporanee permettono la realizzazione di questi pezzi straordinari.

Leader in wrought iron manufacturing, Caporali was born from Italian tradition, love for beauty, Renaissance culture and a taste for quality. Its products follow the change of style in time and the taste of its customers while keeping faithful to tradition thanks to Italian Iron Lab: a in-house design and manufacturing lab where research, innovation and the use of contemporary techniques lead to the creation of such extraordinary pieces.

[www.italianironlab.com](http://www.italianironlab.com)  
[www.caporali.it](http://www.caporali.it)

## SOMMARIO/SUMMARY

### COLLECTION:

#### -LEGAMI

Table

Small Table

#### -EROICA

Bookcase

Bed

Canopy

#### -VENAS

Bed

Small table

Chair

#### -RUNNER

Chest of drawers

Small table

and more...









caporali

**LEGAMI TABLE  
COLLECTION**



caporali




**PASSIONE INOSSIDABILE**  
**inoxida**




The logo for the brand 'caporali' is positioned at the top center of the page. It consists of the word 'caporali' in a lowercase, sans-serif font, enclosed within a thin, dark rectangular border.

caporali

A close-up photograph of a table leg, showing a polished metal frame with a curved, arched design. The leg is attached to a wooden top with visible grain and knots. The background is a plain, light-colored surface.

T111  
TAVOLO LEGAMI LEVIGATO  
PIANO ABETE DI RECUPERO

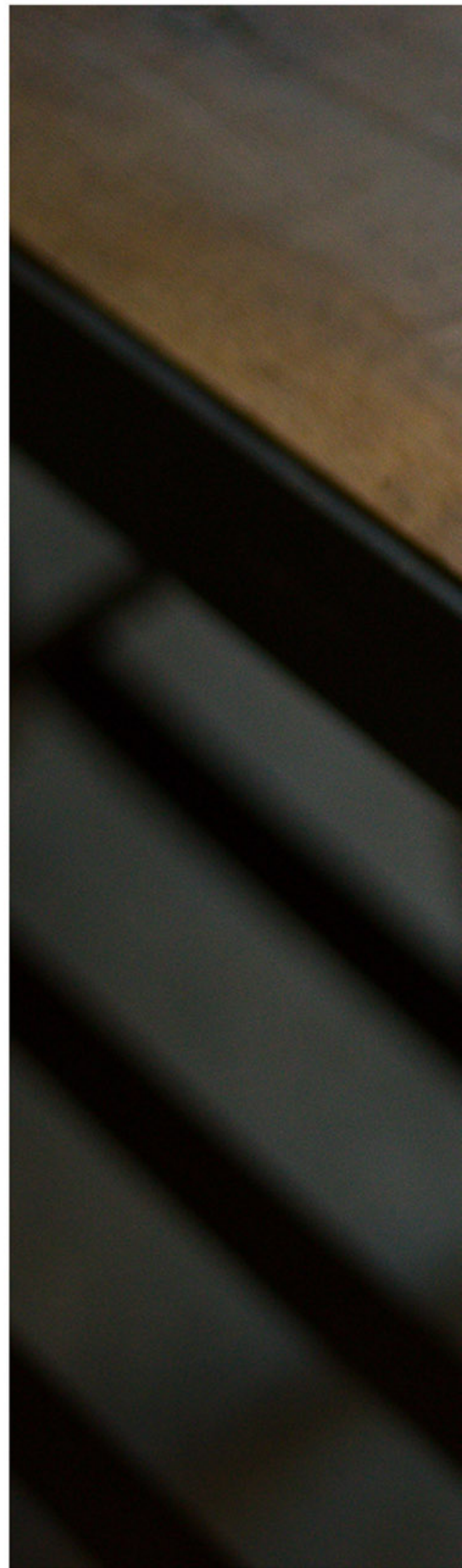
A close-up photograph of the table's top surface, showing the natural grain and texture of reclaimed fir wood. The wood is light brown with darker knots and grain patterns. The edge of the table is visible, showing a smooth, polished finish.

POLISHED LEGAMI TABLE  
TOP IN RECLAIMED FIR WOOD

A large photograph showing the table's top surface and a dark, possibly black, base or underside. The wood grain is prominent, and the overall aesthetic is modern and minimalist. The text 'table passion' is overlaid on the wood surface.

table passion





**T111**  
**TAVOLO LEGAMI FERRO NATURALE**  
**PIANO QUERCIA ANTICA**

**LEGAMI TABLE NATURAL IRON**  
**TOP IN ANTIQUE OAK**





TENSIONE DI SUPERFICIE

surface tension







caporali





caponali

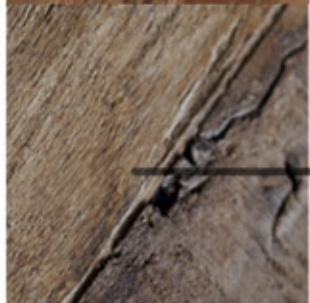
# LEGAMI DINING TABLES



# WOOD



**ABETE DI RECUPERO**



**QUERCIA ANTICA**



**ESTERNO DOGA**



**INTERNO DOGA**



**CUORE DI DOGA**







caporali

# IRON

LEVIGATO



BIANCO ASSOLUTO



ROSSO VIOLACEO



LAVAGNA



FERRO NATURALE





caporali





# EROICA COLLECTION

Design Tommaso Lanini

caporali











## FREE SPIRITS



**LB1**  
LIBRERIA EROICA BIANCO ASSOLUTO  
PIANI QUERCIA ANTICA  
290X36 H220

EROICA BOOKCASE TOTAL WHITE  
SHELVES IN ANTIQUE OAK  
290X36 H220



# NEW SOLUTIONS



PARTICOLARE TESTATA COMODINO  
SPORGENZA 35cm

DETAIL OF HEADBOARD NIGHTSTAND  
HANGING 35cm





**AR148**  
LETTO EROICA FERRO NATURALE  
QUERCIA ANTICA  
210X240 H90 - PER RETE 180X200

EROICA BED NATURAL IRON  
ANTIQUE OAK - 210X240 H90  
FOR SPRUNG BED BASE DI 180X200





AR149  
BALDACCHINO EROICA BIANCO ASSOLUTO  
QUERCIA ANTICA  
210X240 H220 - PER RETE 180X200

EROICA BED CANOPY TOTAL WHITE  
ANTIQUO OAK  
210X240 H220 - FOR SPRUNG BED BASE 180X200



caporali

**VENAS COLLECTION**  
MASTER'S WORKS





**AR142**  
 LETTO VENAS  
 FERRO NATURALE  
 ROVERE ESTERNO DOGA  
 181X209 H122  
 PER RETE 165X190

VENAS BED  
 NATURAL IRON  
 EXTERNAL OAK STAVE  
 181X209 H122  
 FOR SPRUNG BED BASE 165X190

**T130**  
 COMODINO VENAS  
 FERRO NATURALE  
 PIANO ROVERE BARRIQUE  
 Ø55 H60

VENAS NIGHTSTAND  
 NATURAL IRON  
 TOP IN CASK OAK  
 Ø55 H60





AR144  
LETTO VENAS  
FERRO NATURALE  
ROVERE CUORE DI DOGA  
181X209 H122 - PER RETE 165X190

VENAS BED  
NATURAL IRON  
OAK STAVES CORE  
181X209 H122  
FOR SPRUNG BED BASE 165X190



Rielaborazioni del pregiato  
legno delle barriques  
rivestono i prodotti  
conferendo un impatto  
naturale e raffinato.

**A creative use of the finest  
cask wood makes the  
products more valuable, with  
a natural and refined effect.**

S36  
SEDIA  
DOGA  
BIANCO ASSOLUTO  
43X46 H91

CHAIR  
STAVE  
TOTAL WHITE  
43X46 H91







caporali

# RUNNER COLLECTION

L'ESUBERANZA DEL LEGNO  
THE EXUBERANCE OF WOOD.





**MB1**  
CASSETTONE RUNNER  
FERRO NATURALE - CILIEGIO OSSIDATO  
140X62 H99

RUNNER CHEST OF DRAWERS  
NATURAL IRON - OXIDIZED CHERRY  
140X62 H99







# BLADERUNNER

**T133**  
COMODINO RUNNER RETTANGOLARE  
FERRO NATURALE - CILIEGIO OSSIDATO  
50X48 H54

RECTANGULAR RUNNER NIGHTSTAND  
NATURAL IRON - OXIDIZED CHERRY  
50X48 H54

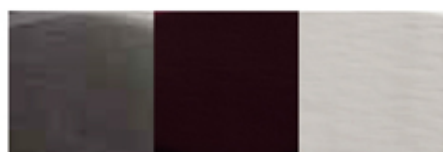






### NATURAL IRON

It is the traditional finishing of our lab, an exclusive iron colouring treatment with oxide and earths achieved through several steps realized by hand. The final water-based gloss layer and the beeswax protect the surface giving iron the typical gloss of our products.



### SLATE - PURPLE RED - TOTAL WHITE

The novelty of freshness. A chromatic range of original colours created by our in-house lab. The elegant freshness of contemporary iron. Acrylic enamels, non-toxic, eco-friendly, unscented. Resistant to detergents, oils, grease and inorganic acids. Semi-glossy look (50 gloss) with an extraordinary conservation of the gloss along time.



### POLISHED

It is the natural colour of iron. It is achieved by an accurate treatment of the iron surface where the slag is removed with thinner and thinner abrasive grains. This particularly sophisticated treatment makes it possible to model in a unique way the surfaces of Pizzo Collection products. The drying is guaranteed by a high performance transparent acrylic material with a low solvent content. Resistant to detergents, oils, grease and inorganic acids. Resistant to scratches.



### RUST BROWN

The spontaneous oxidation process is controlled and enhanced by our experienced finished department. The natural colour shades are the trademark of this finish. Fixed with acrylic gloss and polished with hot beeswax.



### CLEAR/SMOKED GLASS

Float glass, available in the transparent and smoked versions, the edges are finished with gloss. Upon request stratified and tempered glass are available.



### STAINED GLASS

Float glass covered with high quality lacquer gives the products a unique look and a long-lasting beauty. Painted with eco-friendly enamels free of chemical that may damage the environment. Resistance to humidity, light and UV rays prevent colours from fading.



### NATURAL ACRYLIC STONE

It is a new generation mix made of stone powder, acrylic resin and natural pigments. The mixture of these elements creates a smooth and non porous surface, reaching higher technical standards than the traditional materials. In everyday use it is more resistant to shocks, scratches and wearing.



### BLACK BRUSHED GRANITE

It is an igneous stone formed from a slow magma cooling. It has good physical and mechanical qualities and it had a very good resistance to acid and corrosive substances. Our products are made with selected slabs of granite modelled with CNC machines, hand-brushed and treated with a double water-repellent protection.



### RECLAIMED FIR WOOD

Old prima patina fir boards, accurately cut into staves, plastered, brushed and protected with water-based eco-friendly products, become elegant tops for tables and coffee tables.



### ANTIQUE OAK

Tops realized with antique oak boards from the external part of old beans, hand modeled and assembled then brushed and protected with water-based eco-friendly products.

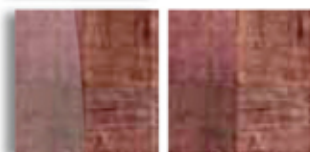
### VENAS

From a creative reclaim of the finest wood from casks, here is Venas. The staves are cut lengthwise and across to obtain oak plugs. Three colours are available:



### -EXTERNAL STAVE

It is the external part of the cask, with the marks of age and of the iron hoops which for years restrained its pressure. The selected plugs are assembled into a mosaic and finally protected with a gloss.



### - INTERNAL STAVE

It is the internal part of the cask. Its fascinating nuances are created by the natural colouring of wine that was absorbed by the wood. The selected plugs are assembled into a mosaic and finally protected with a gloss.



### - OAK STAVE CORE

It is the core of the stave where the cut in the wood is most visible; the oak is then bleached, assembled and fixed with transparent protective enamel 0 gloss.



### STAVES

The material is once again the oak from old casks. The staves cut into splints are had worked and composed into dovetail joints.



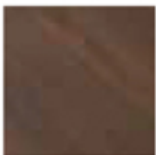
## SOLID WOOD

**OLIVE WOOD**

Olive wood had an extremely fine texture, it is very hard, compact and smooth, resistant to woodworms. It does not absorb liquids and odours, it is resistant to scratching, no bacteria can penetrate it. For the protection of the environment and of centuries-old olive trees, only branches or already uprooted trees. Finished with natural oil.

**ELM**

Elm wood is one of the hardest and heaviest. Its main feature is its stringy grain which makes it ideal for stressful processing. Resistance to wearing makes it ideal for supporting surfaces. Finished with natural oil.

**OXIDIZED CHERRY**

Cherry wood is hard, compact and resistant. Ideal for elements in solid wood it can be used for different kinds of processing. Our sandpaper treatment gives it the uniqueness of a live material, three-dimensional, with a warm and smooth feel. Its natural oxidizing process is enhanced and fixed with transparent protective enamel 0 gloss.

**NATURAL CHERRY**

Cherry wood is hard, compact and resistant. Ideal for elements in solid wood it can be used for different kinds of processing, turning, smoothing, etc... Our sandpaper treatment gives it the uniqueness of a live material, three-dimensional, with a warm and smooth feel. Its natural oxidizing process is enhanced and fixed with transparent protective enamel 0 gloss.

**CANALETTO WALNUT**

It is a mid-sized walnut tree, with a straight trunk and wrinkled bark, its name comes from the ducts that convey chlorophyll. It is very solid and durable, has a medium-high hardness and is easy to process.

**ANTIQUE OAK**

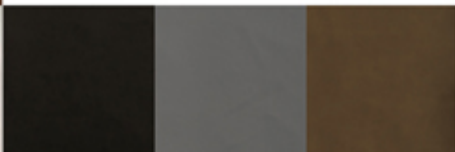
Antique reclaimed oak boards are smoothed and brushed by hand, treated with a particular finish that protects wood while enhancing its beauty. The result is so natural that it looks like unvarnished wood: the grain, the colour and the light of this extraordinary material are well visible to the eye. The finish is very natural, almost 0 gloss, from any point of view. After the brushing process the signs of polishing, usually visible in opaque finishes, are completely absent. The finish gives it an extraordinary transparency and a smooth feel.

## UPHOLSTERY

**ECO-FRIENDLY LEATHER**

Eco-friendly leather had a low impact on the environment and it complies with UNI 11427:2011 regulations.

It respects consumers' health and safety and complies with the technical requirements for its intended use. Clean with mild soap and water. Do NOT use alcohol and solvents. Suitable as an interior material.



## TEXTILES

**LINEN**

One of the most ancient fibres shows its contemporary soul in a new naturally creased version. A special processing removes the creased look of the material. Eco-friendly thanks to the use of non-allergenic dyes.

**COTTON**

It is a vegetable textile fibre with thin white filaments made by almost pure cellulose (80%). It had a good compatibility with leather, it easily disperses heat and is very hygienic

**CASENTINO CLOTH**

Made from the wool of the sheep from the Casentino area, it is fulled to make it waterproof and then brushed to make one side woolly. The curls were traditionally made through a particular process, first the brushing that pulled out the hair, then a stone was rubbed on the wool. The main features of this material are a high resistance to wearing, perfect thermal insulation and high transpiring.





**CAPORALI, FABBRI, ARTIGIANI, UOMINI**  
CAPORALI, BLACKSMITHS, CRAFTSMEN, PEOPLE

È VIETATA QUALSIASI FORMA DI RIPRODUZIONE.  
ALL RIGHT RESERVED. NO PARTS OF THIS PUBLICATION MAY BE  
REPRODUCED IN ANY FORM.  
LE RIPRODUZIONI DEI COLORI SONO DA CONSIDERARSI INDICATIVE.  
THE COLOUR REPRODUCTIONS MUST BE CONSIDERED APPROXIMATE.

**THANKS**  
PASHÀ - MERCANTE D'ORIENTE - NEÒ - DAL PRÀ  
KARTELL - MIHO - SELETTI - MAURIZIO MARCATO  
CRUSSEVIG

**CAPORALI**  
ITALIAN IRON LAB

SANTA MAMA 110A/B  
AREZZO - ITALIA  
T. +39 0575 487033  
F. +39 0575 487233  
P.IVA 02019580519  
[www.caporali.it](http://www.caporali.it)  
[info@caporali.it](mailto:info@caporali.it)  
[www.italianironlab.com](http://www.italianironlab.com)