

REAL
HOMES

THE owners

British-Canadian television presenter and interior designer Debbie Travis and her husband divide their time between a Georgian three-storey terraced house in London and homes in Canada and Italy. They have two grown-up sons.

Personalised requirements, such as the bookshelves and workstation below, make this kitchen a truly versatile space, yet still manage to look perfectly at home in the overall context of the kitchen.

BOLTHOLE BEAUTY

This elegant, Shaker-style kitchen combines traditional period design with every modern convenience

The classically styled furniture suits the Georgian home beautifully, but with contemporary, clean line design cues and finishes that make for a bright and practical 21st-century living space.

A

s the presenter of TV programmes intended to inspire viewers to revamp their homes and the author of several books on the subject, Debbie Travis has no shortage of interior design ideas.

“Our three-storey home in Wandsworth was built in 1805 and is an ideal bolt-hole in London, with its vibrant neighbourhood and easy access to the city,” recalls Debbie. “We bought it seven years ago and knew it needed total renovation, but our two sons were based there at the time and they were not particularly bothered about the state of décor - as is the case with most youngsters of their age!”

Debbie was keen to tackle the house, however, and while her sons were distracted by their careers, she began to consider a full redesign and renovation project, aiming for an interior design scheme that would be traditional with a contemporary twist.

“The kitchen was a focal point,” she explains. “It needed to be in keeping with the period and personality of the property, but also in tune with modern daily life and our own tastes. I will be the first to confess that I’m quite demanding, because I know exactly what I want to achieve - I quickly realised that an ‘off-the-shelf’ furniture solution wasn’t going to be the answer.”

Debbie turned to Jason Smith, designer at Ray Munn Kitchens, to translate her ideas into reality using the company’s bespoke, in-frame furniture service. To give Debbie the clean, contemporary, yet period look she could see in her mind’s eye, Jason recommended narrower furniture frames and tall units scaled to the height of the room. He suggested removing the cornice for a cleaner line and customising many of the accessories, including copper-plating the knobs and handles, for coherence. Pendant lighting and floating shelves add to the fuss-free look.

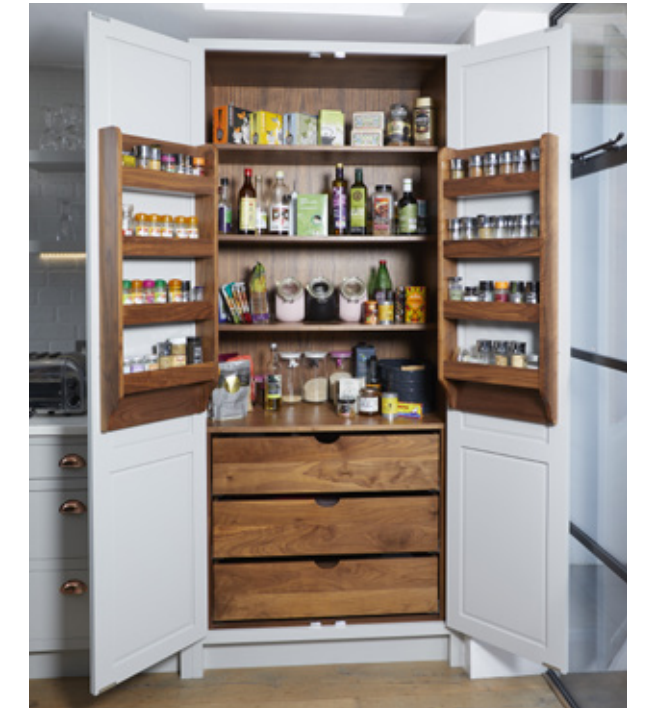
A bespoke copper finish to handles and knobs gives a warm feeling and ties in with the pendant lighting and many of Debbie’s styling accessories. The porcelain worktop provides the look of marble but with a more practical finish, while the floating shelves offer plenty of storage.



THE designer

“If building and renovations works have already been instructed by the customer, it’s imperative that, as a designer, you work closely with them to ensure services and plug points are in exactly the right place.”

Jason Smith, designer, Ray Munn Kitchens





72

This, combined with Crittall-glazed doors and Farrow & Ball's Pavilion Grey paint for the wall-mounted furniture, makes the room feel bright and spacious despite the low ceilings and narrow proportions typical of Georgian terraced homes. Debbie's choice of the same oak flooring throughout the house serves to tie the lounge and kitchen together.

"I'm so happy with the result; Jason's flexible approach means the space works perfectly for us - both on a visual and practical level - providing us with all the storage and food preparation capacity we wanted," says Debbie.

Particularly practical is the kitchen island, with its concealed, integrated appliances and breakfast bar, in Raven by Little Greene. The Neolith porcelain worktop reflects the available light and also creates a visual contrast to the furniture's paint finish.

Not only the look and practicality of the kitchen impresses Debbie – she is delighted by its durability.

"The build quality of the furniture means it's 'son proof'," she concludes. "This is most important when we are not here and they have their friends round!"

THE details

Kitchen design by Jason Smith, designer, Ray Munn Kitchens, using in-frame Shaker, walnut dovetailed drawers and walnut finished cabinetry in Farrow & Ball Pavilion Grey and Little Greene with Neolith Estatuario worktops. Kitchens start from £10,000. raymunnkitchens.co.uk

Fisher & Paykel RF540ADUSX4 French-style fridge-freezer fisherpaykel.com

Miele G6660SCVi dishwasher, WKG120 washing machine and TKG840WP tumble dryer miele.co.uk

Liebherr WTES4177 Vinidor wine cooler liebherr.com

Mercury 98140 Slab Canopy extractor and 1082 D/F S/S 93200 range cooker mercuryappliances.co.uk

Kohler K-3838-1 Vault Smart Divide sink kohler.co.uk

Dornbracht Elio tap with spray dornbracht.com

Original BTC DP7164 polished copper interior pendants originalbtc.com