



Project partner

4Days

SACEE

SACEE is an **11352 certified E.S.Co** that provides Energy Management, Consulting and **integrated BIM Design services**.

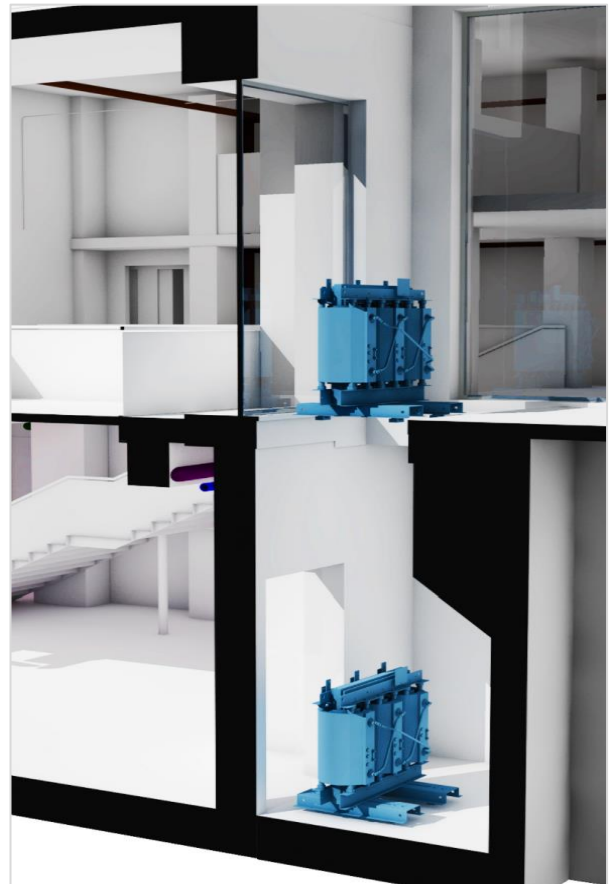
SACEE's core business is **the design, construction, testing, management and monitoring of energy saving projects, also with EPC** (Energy Performance Contract) contracts.

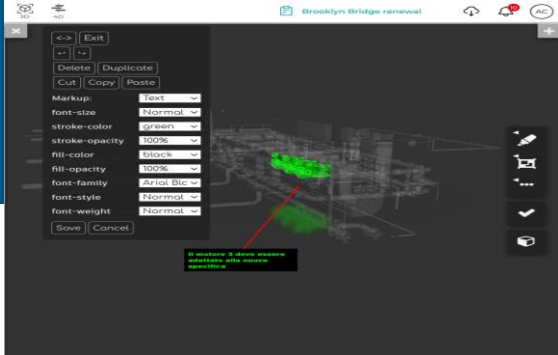
SACEE, in its constant search for innovation and the provision of cutting-edge services, has chosen Truspace as a platform to deliver efficiency. SACEE is characterized by an **integrated multidisciplinary approach amongst internal departments** (Architectural, Plant, Structural, Energy Design and Acoustics, Energy Management).

Alongside the adoption of the platform with cloud web solution for the management of all internal projects, SACEE has chosen to establish a partnership with 4Days for the **R&D of specific advanced solutions for energy management** and for the solution of complex problems of its customers.



Overview





Project

The constant evolution of SACEE's services and consulting models has led over the years to develop an **integrated and multidisciplinary approach to technical design**, and to adopt international BIM methodologies and processes in advance of competitors in the sector. Following some examples of the change driven by the Founder and CEO Maria Grazia Costa to evolve both the organization and its handling of information, especially in the innovation process:

- rolling out the adoption of a **BIM organizational model** and structuring of internal processes consistent with international standards;
- supporting change through the introduction of an **advanced CDE technology**, which would allow the logic improvement of integrated multidisciplinary design and collaboration with suppliers and customers;
- target the introduction of monitoring and maintenance services according to a **Digital Twin model**;

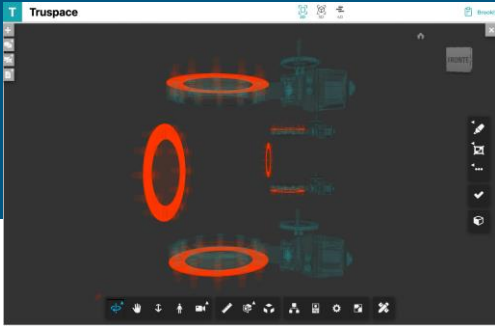
- achieve further certification in 2022 in terms of **BIM compliance**;
- introduce R&D logic for the customization of solutions focused on Energy Management.

The company decided to adopt Truspace, with the introduction of the platform at the beginning of 2021 and the management of some pilot orders with important customers (for example Nidec and Terna), successfully experimenting with clients the features of digital collaboration within Truspace.

The implementation process provides for generalized adoption by 2022 for all orders and their management phases.

PROJET TEAM

Maria Grazia Costa, Diego Ratti, Gianluca Abbiati (Sacee),
Marcello Vezzelli, Alessandra Commisso,
Marco Lotti (Truspace)



Outcome



Process of adopting the solution and operational testing on pilot orders **within 4 weeks.**



Positive online and active **collaboration testing and digital delivery** with important clients.



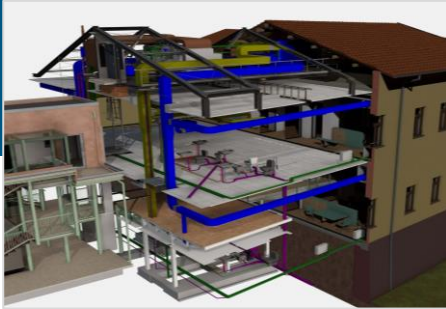
Modelling of **internal processes and document coding** through platform management tools and work-flows, making their certification concrete and achievable.

1

Single tool for management, collaboration and analysis of all study orders.



Immediate testing of asset monitoring and management processes and services.



People



"As an entrepreneur, I am constantly looking for solutions to offer our customers services characterized by two dimensions above the others: innovation and sustainability. One of the roads we are following in this direction is the world of Building Information Modeling, and the adoption of Truspace insists on this direction of development. We believe we have found an advanced technological solution and, above all, a partner to design together areas of development."

Maria Grazia Costa
Founder and CEO Sacee



"SACEE is an organization that strives for excellence; and it is a pleasure to collaborate with the people who inhabit it, from BIM Managers to Project Managers to discipline specialists. The project focus we are pursuing together is to push the adoption of the Truspace platform into BIM process logic and collaboration with end clients. This is as motivating as it is challenging."

Marcello Vezzelli
BIM Manager, PM 4Days



"We are flattered by SACEE's choice to adopt Truspace and collaborate as a partner. It is vital for us to develop relationships with highly qualified and technically advanced organizations, making available our solution but above all our expertise in designing, testing and implementing concrete solutions."

Marco Lotti
Founder 4Days

Truspace

Integrating possibilities

