

Project partner

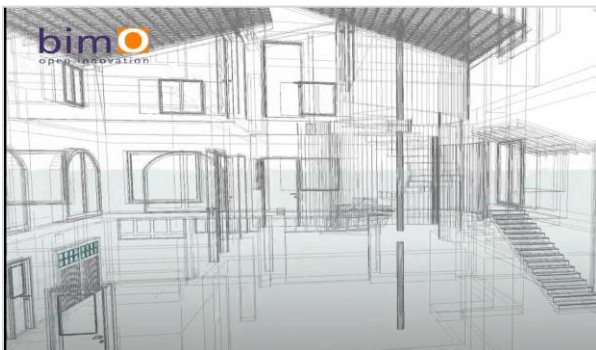
RS2  
architetti

## BimO

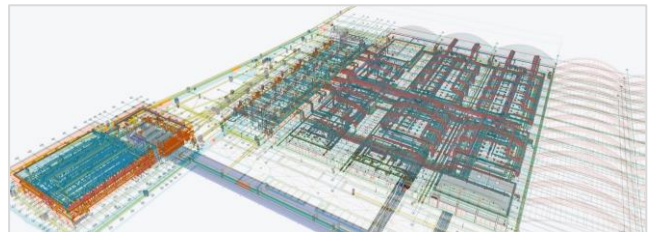
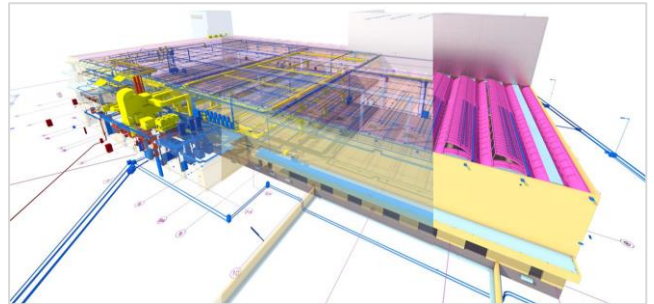
BimO is a **technological start-up** born in 2016 to provide **innovative digital services** to the AECO sector and apply them through its subsidiary RS2, which has been operating as a professional studio in the sector for over 20 years, in Italy and abroad.

**BimO** chose Truspace as a transversal application for the **management of all their Design & Built projects**, with the aim of having a single web solution that would support the study activities, integrate the technical and management applications, guarantee the carrying out of orders according to BIM processes, integrate external designers and allow innovative digital delivery for its customers.

At the same time, BimO has decided to propose Truspace in its Standard and Enterprise versions to partner studios and as a technological basis for complex projects.



## Overview





The decision to adopt the Truspace platform by BimO and the RS2 studio stems from the participation in a technical demo at a common customer.

**CEO Franco Rebecchi's** assessment of the results and flexibility of Truspace's technological model led the company to choose to invest in the solution as a reference application for project management. There are several objectives behind the choice:

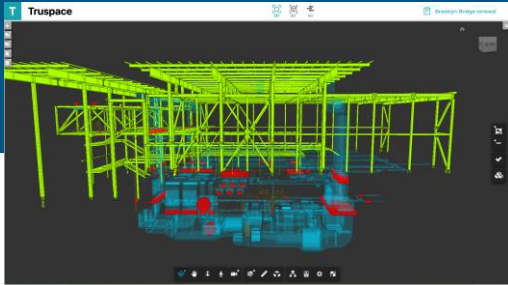
- Support **study activities** with a **single methodology**, compliant with international BIM standards, simplifying and standardizing them, ultimately making them more efficient;
- Have a **single web and cloud environment** for the management of all projects, data, information, documents, updated in real time and always available for all internal and external stakeholders;
- Trace and **structurally record the relevant phases** of order management, from variations to customer approval cycles, eliminating the dispersion linked to the use of emails, directories and other non integrated tools;

## Project

- Integrate the different applications in a **single horizontal collaboration solution**;
- Offer customers an advanced technological solution, able to provide a **complete Digital Delivery**;
- Innovate with customers on the potential of **extending BIM processes beyond the Design & Build phases**, through the construction of Digital Twins capable of integrating asset management, their maintenance, and the integration of intelligent sensors;
- Having a partner able to work on process re- engineering as well as on application development, to tackle complex projects that can only be reached with the integration of skills.

### PROJECT TEAM

Franco Rebecchi, Gianluca Savazza (BimO), Emanuele Barlottini, Elettra Pacchioni (RS2), Marcello Vezzelli, Alessandra Commisso, Giovanni Carta, Marco Lotti (Truspace)



## Outcome



Time management of any job order was a clear win. BimO observed a **20% reduction in time to completion.**



**Customer appreciation of digital delivery** and the potential for extension in asset management. Examples include AEC, the State Property Office, Korus International, Emerson, Philip Morris.



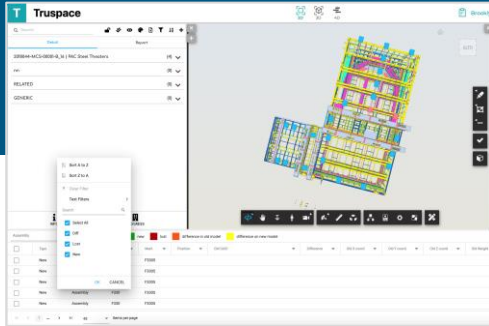
Issue handling, approval workflow flexibility and easy **management reduced drastically errors in the design phase** delivery notes (-30%). The transition between design and worksite became seamless for all clients.



The adoption of a purely Web-based solution, incorporating Cloud document management, which allows the addition of users such as suppliers or clients without further cost, **has significantly reduced the cost/time/complexity of the firm's Information Technology**, while simultaneously increasing security.



The introduction of structured, internationally compliant and information-supported processes **has significantly reduced the training cycle for new staff, the risk of turnover, and external quality standards**, and makes it possible to achieve BIM certification of the firm's processes soon.



## People



*"Two are the objectives we have set ourselves through the adoption of Truspace and the collaboration with 4Days: to reorganize the RS2 studio with BIM 4.0 processes and to propose advanced technological solutions to BimO clients. To date, I believe, although there is still a long way to go, that we have achieved both objectives and have found a quality partner with whom to go forward."*

**Franco Rebecchi**  
Founder e CEO  
RS2 and BimO



*"As the person in charge of coordinating all the design activities, I needed to focus on an evolved management of the orders, which would allow me to keep control of them in a simple way and without wasting time, according to purely BIM methodologies. The adoption of Truspace, the easy integration with our authoring software, the marked process orientation, allowed us step by step to realize this leap in management, progressively involving our design partners and our customers."*

**Gianluca Savazza**  
Founder and COO BimO



*"As a BIM Coordinator, I have dealt with some complex orders related to important clients with the help of the Truspace solution, particularly in the management of construction sites. This has allowed me to appreciate its completeness and flexibility, finding specific solutions to the problems encountered from time to time. I have also had the opportunity to appreciate the technical quality and availability of Truspace staff and in particular of Marcello Vezzelli, with whom I constantly collaborate in the search for solution strategies."*

**Emmanuele Barlottini**  
BIM Coordinator BimO

# Truspace

Integrating possibilities

