

CRESCENT

NOB HILL

PENTHOUSE FOUR

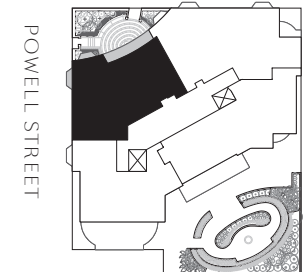
LOWER LEVEL

2 BEDROOMS | 2 BATHROOMS
POWDER ROOM

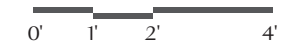
INTERIOR 1,807 SQ FT
EXTERIOR 1,054 SQ FT

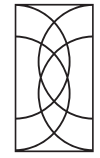


CALIFORNIA STREET



Scale 5/16" = 1'





CRESCENT

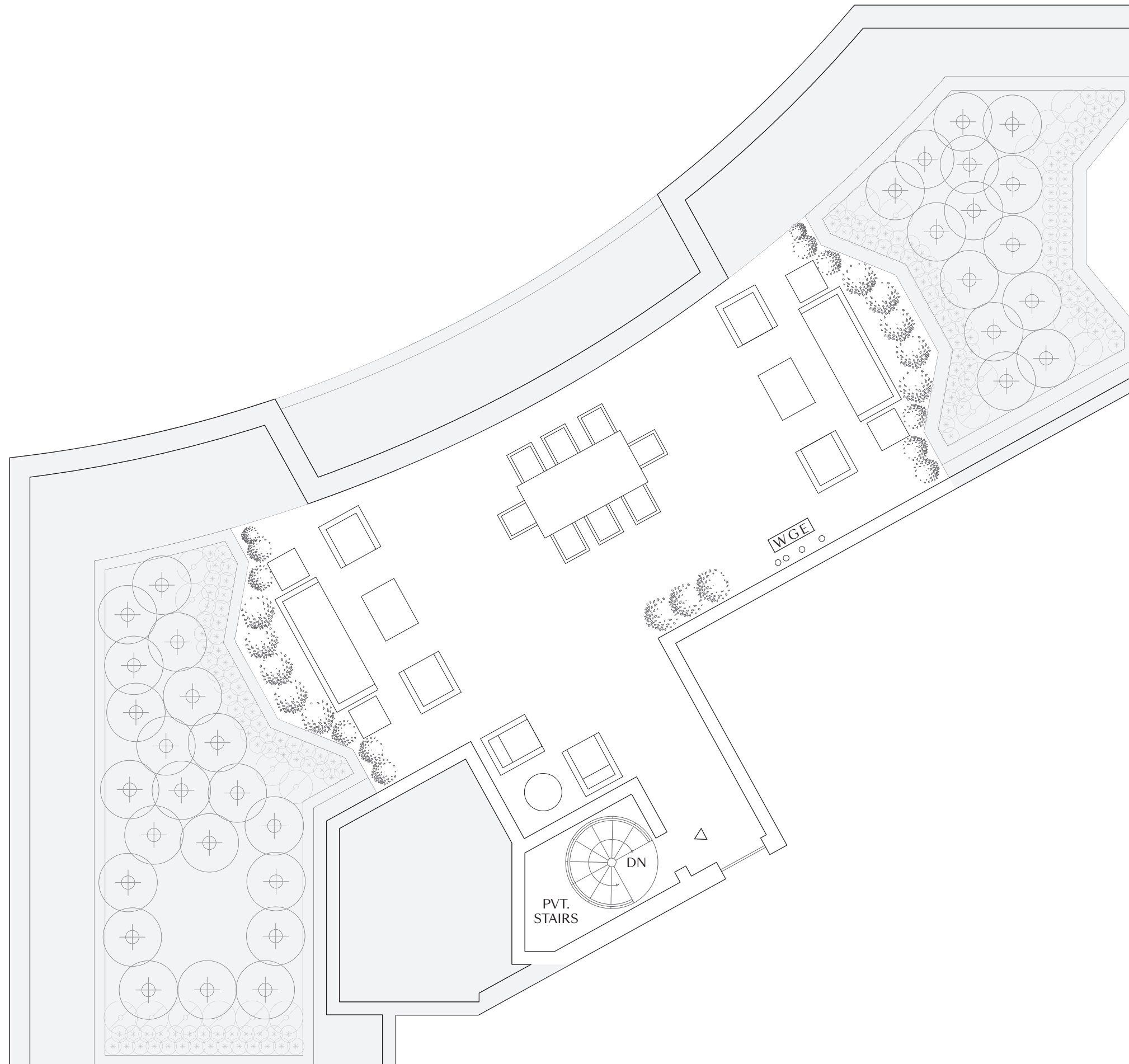
NOB HILL

PENTHOUSE FOUR

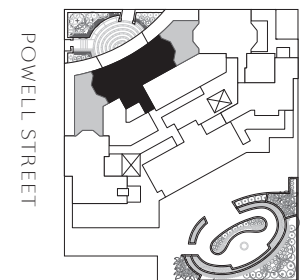
UPPER LEVEL

2 BEDROOMS | 2 BATHROOMS
POWDER ROOM

INTERIOR 1,807 SQ FT
EXTERIOR 1,054 SQ FT



CALIFORNIA STREET



POWELL STREET

Scale 5/16" = 1'

