

THE HAIRING #4

KNOW YOUR ENEMY

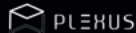
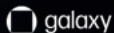
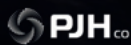
REAL BEDFORD V
CHATHAM TOWN



THE LEDGER STADIUM

SUN 8TH SEP • 2PM KICK OFF

THE FA WOMEN'S NATIONAL LEAGUE
DIVISION ONE SOUTH EAST





Galaxy proudly champions Real Bedford Ladies FC



galaxy.com

THE PIRATES

CHAIRMAN
PETER MCCORMACK

VICE CHAIRMAN
CONOR MCCORMACK

CHIEF EXECUTIVE
EMMA FIRMAN

CLUB SECRETARY
NEIL MCCORMACK

MEDIA
SEB HENDRIX
CURTIS TAYLOR

CLUB HISTORIAN
GEOFF SEAGRAVE

WOMEN'S FIXTURE SECRETARY
JENNY YILDIZ

HONORARY SECRETARIES
LUI LA MURA
ANDY GOODWIN

MANAGER
CHARLIE BILL

ASSISTANT MANAGER
MARK DASS
LAURA BRIGHT

COACHES
ED CAKE (GK)
IAN BIGGADIKE (GK)

PHYSIOS
BETH ADAMS
ALEC MILLER

KITMAN
GEZZA

GROUNDSMAN
JACK MUDGE

CLUB HONOURS

23/24 EASTERN REGION LEAGUE WINNERS
23/24 LEAGUE CUP WINNERS
23/24 BEDS COUNTY CUP WINNERS

REAL BEDFORD FC LTD
COMPANY NUMBER 13774571
UNINCORPORATED MEMBERS CLUB

If you're pushing the
boundaries of what
Bitcoin can do – we
want you.

8-Week Accelerator Program in NYC

WOLFNYC.COM



CONTENTS



7

CHAIRMAN'S NOTES
PETER MCCORMACK

10

MANAGER'S NOTES
CHARLIE BILL

12

CHIEF EXEC NOTES
EMMA FIRMAN

14

CAPTAIN'S NOTES
GEMMA BIGGADIKE

15

MATCH REPORT
PIRATES 3 - 0 MK DONS 🤔

17

MATCH REPORT
QPR 0 - 2 PIRATES

19

THE BIG INTERVIEW
JESS EVANS

22

TEAMMATES
CHIARA MEOLA

24

PLAYER PROFILE
ABBIE BENSTED

25

THE AWAY TEAM
CHATHAM TOWN

26

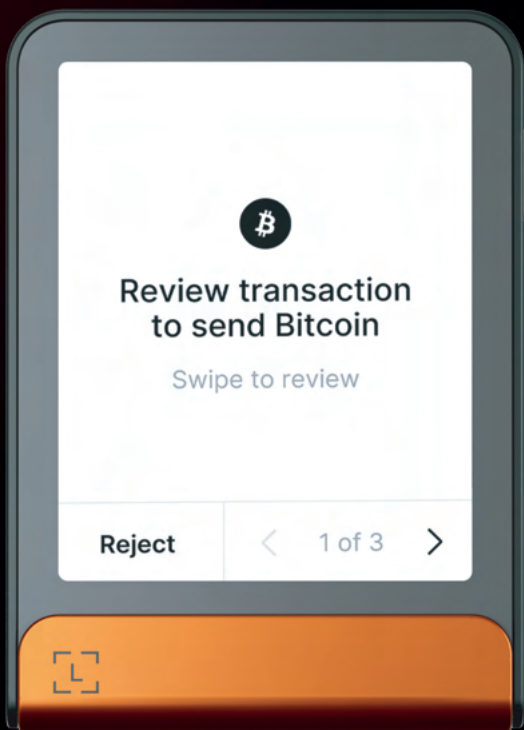
FIXTURES/TABLE
FAWNL SOUTH EAST DIV ONE

28

MATCHDAY SQUADS
PIRATES V CHATHAM



Not your keys, not your Bitcoin.



CHAIRMAN'S NOTES



Welcome back to The Ledger Stadium! It's fantastic to see you all here, and I'd like to extend a warm welcome to the manager, players, directors, and fans of Chatham Town. We hope you enjoy your visit today.

Chatham Town have had a good start to the season too, and despite their defeat to Actonians, they have clocked up two good wins against London Bees and AFC Sudbury, scoring nine goals in those two games. We expect a very tough game but are looking forward to the test..

We return to our home ground after a demanding schedule of three games in just eight days—a real test of our squad. Despite the challenge, our team rose to the occasion, securing three wins, scoring eight goals, and conceding only two. Among these victories was a standout 3-0 win against MK Dons in the League Cup and a memorable 2-0 away victory at Loftus Road against QPR. This marked -

the first time our women's side played in a stadium, and I was proud to see us defend well in the first half before Laura Mitchell and Alex Dicks capitalised on their late opportunities to seal the points.

A special shoutout to everyone who turned out for the MK Dons game at The Ledger Stadium, where we set a record crowd with over 340 in attendance and 1,000 tuning in via the livestream—our highest numbers ever for a women's match, both on and off the pitch. Your support is helping our mission and I want to thank each of you for making the effort to support our team.

It's been an excellent start to the season with four wins in four games across all competitions and three clean sheets. Whether in defence or attack, the team has performed exceptionally well, and the dedication shown by everyone involved is a testament to their hard work.

Unfortunately, we received a complaint from MK Dons regarding two incidents following our game against them. I believe it's important to address these here to give you insight into the culture we are building at our club. The first issue was about my tweet referring to their manager as a "24 Carat ****." Throughout the game, their manager directed abusive comments from the sidelines, particularly toward one of our players. I will always stand up for and protect our team, and I'm not shy about calling out bad behaviour when I see it. While my direct approach might not suit everyone, I'm prepared to take a fine from the FA if it means holding people accountable. Football can be an emotional sport but I won't accept any of our players or staff being abused by the opposition.

The second complaint involved the photo accompanying my notes, taken during a shooting trip in Vegas while on holiday in the US. I'm not entirely sure why this was an issue, but I think it's a great photo.

At the heart of these complaints is a broader debate about free speech, an essential principle that faces increasing challenges today. In the UK, restrictive speech laws can lead to people being harassed, sued, or even jailed simply for speaking their minds. I've recently completed a five-year lawsuit for publicly calling out a fraudster—had I lost, I would have been financially ruined. Thankfully, I won, and the fraud was exposed.

Free speech also touches on the complexities of hate speech laws. While these regulations often stem from good intentions, they can have unintended negative effects. Free speech is a fundamental pillar of liberty, embodied by the First Amendment in the US, which protects the right to express even unpopular or offensive opinions. We must accept that people will sometimes say things we don't like, but curbing speech through legal means often leads to greater harm.

A perfect example is how Russian oligarchs have used UK libel laws to silence journalists and suppress critical reporting. This abuse of power undermines the free press and stifles accountability. That's why I won't be removing the photo—it's about standing firm on the principle of free speech.

I want to clarify that I am not advocating for widespread gun legalisation in the UK, nor do I align myself with a pro-gun stance. However, I understand and respect the cultural importance of the Second Amendment in the US.

Our club is about more than just football; we stand for liberty—freedom of expression, association, and speech—and we are committed to pushing back against big government and the oppression it often brings. History repeatedly shows that when governments are given too much power, it's the electorate who suffer.

These are challenging and sometimes controversial topics, and I appreciate that not everyone will agree or fully understand. I am always available to discuss these issues, so please feel free to reach out if you'd like to chat.

Finally, I want to wish our team the best of luck today, and thank you, our incredible supporters, for your unwavering support.

Peace 🌿 🙌



CHAIRMAN



www.botanixlabs.xyz

Botanix Labs
is proud to be
Real Bedford
FC's partner.

 BotanixLabs

MANAGER'S NOTES



Welcome to Ledger Stadium for our second home game in the FA Women's National League as we take on Chatham Town Women.

We're coming off a fantastic week that saw us create some unforgettable moments early in the season. We've set high expectations for ourselves, especially with the tough challenges we've been handed right from the start.

Last Wednesday was a brilliant showcase for the women's game—a local derby full of emotion with over 340 fans in the stands and an additional 1,000 tuning in online. The match began tentatively, and we struggled to find our rhythm in the first half. However, our second-half performance was a true reflection of our identity and the work we've put in, especially our third goal, which captured our spirit. The feedback on the evening was incredible, highlighting the character and heart of this squad from start to finish.

We then faced another major test on Sunday with a quick turnaround, traveling to QPR to play at Loftus Road. The physical demands of the week were evident as the tempo dropped, but we remained focused, defended resolutely, and trusted our quality up front. As the game wore on,

we capitalised, scoring two superb goals that secured us three points and extended our perfect start to four wins from four. It truly showcased the depth and quality of our squad, with every player making a vital contribution.

Today, we wrap up this intense four-week period against Chatham Town, a team we know well. They boast a squad full of talent, many with experience in Tier 3 and beyond. Chatham is organised, disciplined, and will be one of our toughest challenges this season; I fully expect them to be competing at the top end of the league.

We've had a full week to prepare, and we've left no stone unturned as we look for another three points.

Your support last Wednesday was phenomenal—we heard you every step of the way. Let's bring that same energy today to help drive us forward once again.

Come on, you Pirates!

Charlie Bill
MANAGER

The global leader in bitcoin recruitment.



PLEXUS

www.plexusrs.com

CHIEF EXEC NOTES



The season has kicked off in spectacular fashion for our Women's team, with a strong start in both League and Cup competitions. Under the expert leadership of Charlie and his management team, the squad has had a great start to the season.

It's been fantastic to welcome our new players, who have seamlessly integrated into the team. Their quick adaptation and chemistry have been pivotal to our early success, demonstrating that they are not only talented individuals but also a cohesive unit driven by a shared purpose.

As proud members of the Women in Football Association, this is an exciting time to be part of women's football, especially with our recent promotion to the Women's National League (WNL). The heightened level of competition presents an opportunity to compete against some of the best teams in the region.

We owe a special thanks to Jenny, our fixture secretary and Women's Welfare Officer, whose dedication behind the scenes keeps the women's side of the club running smoothly.

Last week was a landmark moment for the club, as we played at Loftus Road against QPR. The match was not only a fantastic experience for the team but also a memorable day for the entire club, topped off with a 2-0 victory. I would like to thank

the large group of traveling supporters providing vocal support throughout the afternoon. It was a day that will live long in the memory, highlighting the progress we have made as a team.

Looking ahead, we are excited to announce our new partnership with Her Game Too, an organisation dedicated to promoting gender equality in sports. They approached us at the end of last season and we now look forward to working together to continue growing the women's game. This partnership aligns perfectly with our values and commitment to supporting women in football.

Today also marks the debut of our new Brewpoint Beer Hut, which will be open for the first time, enhancing the matchday experience for our supporters. A big thank you to Brewpoint for their partnership.

With so much positive momentum behind us, we look forward to continuing our strong start to the season and building on these early successes. The future looks bright for our Women's team, and we are excited for what lies ahead.

A stylized, handwritten signature of Emma Firman in black ink.

CHIEF EXECUTIVE



Gemini is Proud to Sponsor Real Bedford and Their Journey to the Premier League

Football and digital assets share a common spirit of innovation and community, and our five year partnership with Real Bedford showcases how digital assets can play a crucial role in the traditional world of sports. Real Bedford sets a pioneering example for other clubs and businesses, demonstrating the revolutionary potential of digital currencies to provide growth opportunities, and the collaboration signifies a major step forward in the convergence of football and digital assets.

Gemini's sponsorship, paid in Bitcoin, is one of the longest multi-year shirt deals outside of the UK's professional leagues. This innovative approach helps safeguard against high inflation while supporting the club's plans for a new training center and a youth academy for underprivileged children in Bedford.

Last year, our Co-Founders invested \$4.5 million into the club, and since then we've seen Real Bedford achieve two consecutive league promotions and multiple cup wins, boasting an impressive 81% win rate. This partnership reaffirms our belief in Real Bedford's potential to defy the odds and challenge the establishment, and we are excited for the club's future achievements.

Gemini is honored to be part of Real Bedford's journey and look forward to supporting the club's continued success both on and off the pitch!

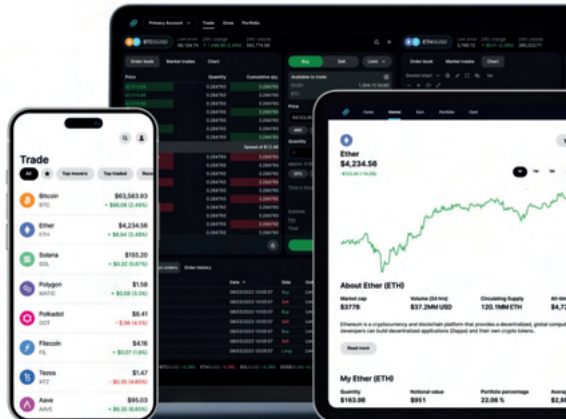
Onward and Upward!
The Gemini Team



**Buy, sell, and store
bitcoin and 90+ cryptos**
Get started today at gemini.com

Cryptoassets remain high risk. Don't invest unless you're prepared to lose all the money you invest. This is a high-risk investment and you should not expect to be protected if something goes wrong.

Cryptoasset services are provided by Gemini Intergalactic UK, Ltd. You should note that your crypto asset profits may be subject to capital gains tax.



CAPTAIN'S NOTES



What an incredible week it's been! The team, both players and staff, have faced a demanding schedule, but coming out on top in all three matches speaks volumes about our hard work and commitment.

Wednesday's game against MK Dons was particularly emotional for many, and it wasn't easy. Despite the high emotions, we maintained our standards, especially in the second half, where we really demonstrated our ability to control, create, and dictate the game. It was a pivotal moment that gave us great momentum heading to QPR.

Then came Sunday at Loftus Road—a truly memorable occasion! Playing in front of an amazing crowd, we delivered some really exciting football. While we know there's still more to come, we've started the season the way we intended: by winning, and that's what counts.

I couldn't be prouder of the team. Every player has played a vital role in our success so far. Our chemistry is building week by week, and the bonds we've created are becoming stronger both on and off the pitch. This unity has been crucial to our performances.

Looking ahead to Chatham, we know it'll be another tough challenge, but we're ready. Many of us know them from tier 3, and we're aware of their strengths. But I have full confidence in our ability to rise to the occasion once again.

We've been working hard in training to adapt, and we're prepared to execute our game plan to secure another positive result.

It's great to be back at home, and we're excited to see as many fans as possible in the stands. The support so far has been incredible, making a real difference for us. With every game, we're growing stronger, and it's becoming clearer what our goals are this season. The fans have been a driving force behind us, and we hope their support continues to grow as we move forward on this journey together.

Gemma Biggadike

CAPTAIN

RECORD CROWD SEES REAL BEDFORD WOMEN DEFEAT MK DONS 3-0

THE LEDGER STADIUM
LEAGUE CUP • 28TH AUGUST 2024



A record crowd of 342 for a women's game at The Ledger Stadium watched Real Bedford claim a 3-0 victory over MK Dons in a fiercely contested cup derby. Second-half goals from Mitchell, Warren, and Meola, and a player of the match performance from Jess Evans, put The Pirates into the next round of the League Cup.

MK Dons arrived at The Ledger Stadium for this hotly anticipated cup derby match, with an air of tension surrounding the fixture. Real Bedford's new manager and his staff, along with several players, had only joined The Pirates over the summer, bringing added spice to the encounter.

Both teams had points to prove. MK Dons' players were eager to show they could compete with their old teammates, while Real Bedford were determined to knock out a Tier 3 side from the cup. As the players took to the pitch, they were greeted by a record crowd for a women's game at The Ledger Stadium of nearly 350, with over 1,000 more tuning in via the live stream. With one eye on their upcoming game against QPR on Sunday, and amidst a hectic schedule of three games in eight days, manager Charlie Bill made a number of changes to keep his players fresh.

From the first whistle, MK Dons came out with intensity, supported by a boisterous group of travelling fans. Throwing themselves into challenges and pressed hard, they set out to disrupt Real Bedford's possession play. Their aggressive approach paid dividends early on, as they stifled The Pirates' efforts to build from the back.

Real Bedford had the first significant chance in the 5th minute when Gemma Biggadike's free-kick was met by Stovold, who could only direct her effort wide. Moments later, another free-kick from Biggadike saw Dicks glance a header just out of reach of McLean at the far post, setting the tone for a game defined by set-pieces.

Despite the early pressure from the visitors, The Pirates' defence held firm, with Jess Evans, the eventual player of the match, leading by example to repel numerous MK Dons attacks. Tyana Nee-Chambers was a constant threat in midfield, creating space in the middle to open channels on either wing.

The Dons came closest to breaking the deadlock in the 39th minute when Nee-Chambers skipped past

several defenders and set Byrom free on the left. Her shot was tipped over the bar by Darcy Guy, leaving the teams to head into halftime goalless.

Second Half

Charlie Bill made a tactical switch at halftime, bringing on Laura Mitchell for Amy McLean, and the change paid immediate dividends. Just six minutes after the restart, a deep free-kick from Milly Hayes was well controlled by Mitchell, who blasted the ball into the net, sparking wild celebrations from the home fans.

Real Bedford thought they had doubled their lead shortly after. Mitchell, continuing to make an impact, played a clever backheel to Biggadike, who crossed deep into the box. The ball was cleared by MK Dons but only as far as Sofia Stovold, whose strike from 25 yards rattled the underside of the bar and bounced out. Replays suggested the ball had crossed the line, but the goal was not given.

Undeterred, The Pirates did eventually double their lead, with a goal that mirrored the first. Another deep free-kick from Hayes was brought down by

Alex Dicks, who found Hannah Warren in space to poke the ball home, for a rare goal for the defender.

Undeterred, The Pirates did eventually double their lead, with a goal that mirrored the first. Another deep free-kick from Hayes was brought down by Alex Dicks, who found Hannah Warren in space to poke the ball home, for a rare goal for the defender.

Charlie Bill's subsequent substitutions, introducing Abbie Bensted and Chiara Meola, allowed Real Bedford to take full control of the game. In the 80th minute, they finished off the contest in style. A slick one-touch move involving Mitchell, Warren, and Meola set Emily Wilson free down the right. She clipped the ball over an oncoming defender and crossed into the box where Meola struck first-time past the keeper, sealing a memorable 3-0 victory.

RBFC Women: Guy, Warren, Puddick, Biggadike, Evans, Stovold, Newman, Hayes (Wilson 76'), McLean (Mitchell 46'), Gould (Meola 66'), Dicks (Bensted 66').

Unused Subs: Price.



PIRATES' PERFECT RUN CONTINUES WITH HARD-FOUGHT WIN OVER QPR

LOFTUS ROAD
LEAGUE • 1ST SEPTEMBER 2024



Real Bedford secured a hard-fought 2-0 victory over QPR at Loftus Road, preserving their perfect start to the season. QPR dominated the better chances of the first half, hitting the bar, but late strikes from Mitchell and Dicks sealed the victory for The Pirates.

Real Bedford marked a historic moment in their club history as they stepped into Loftus Road for their first-ever match in a senior league club stadium. The club's historic aura was palpable, with photos of QPR legends like Terry Venables, Les Ferdinand, and Ray Wilkins decorating the walls of this historic stadium.

The Pirates were looking to maintain their 100% start to the season while QPR were eager to pick up their first win. Both teams came into the match off the back of impressive cup victories against higher-level opposition; Bedford defeated their local rivals MK Dons 3-0, while QPR had won against last season's level 4 winners, Wimbledon.

With both teams playing their third game in eight days and the temperature soaring, fatigue was always likely to be a factor, and it showed in a cagey first half. Much of the opening 30 minutes was contested in the midfield as both sides cautiously felt each other out, leading to a goalless and largely uneventful first 45 minutes.

QPR had the better chances of the half and would have felt aggrieved not to go into the break ahead. Darcy Guy, in goal for Bedford, was called into action early on in the 7th minute when Ash Goddard set up Alana Munro, but Guy was quick to smother the effort and concede a corner. The Pirates' first real sight of goal came in the 16th minute when Chiara Meola's long-range effort curled narrowly wide of the far post.

Courtney Ward-Chambers, a constant threat in midfield for QPR, found space from 25 yards out, but her shot fizzed just wide of the target. QPR came agonisingly close again in the 25th minute -

when Georgie Lewin's header from Laura Hennessey's corner was cleared off the line by Hannah Warren. Ward-Chambers continued to test Bedford's resolve with another long-range strike, this time rattling the bar with a half-volley from 25 yards. QPR headed into halftime feeling unlucky not to be ahead, having dominated the better chances.

Second Half

The second half started in a similar fashion, but as substitutions were made to bring on fresh legs, the game opened up. The introduction of Alex Dicks, Milly Hayes, and Tricia Gould injected new life into The Pirates, who began to create more meaningful opportunities. Dicks made an immediate impact, finding space down the left and testing the QPR defence with two dangerous efforts, though both narrowly missed the target.

Despite Bedford now creating the better chances, QPR continued to press well from midfield, but they found themselves up against a resilient defensive display from Warren, Stovold, Evans, and the outstanding Kerry Newman, who was named Player of the Match.

The breakthrough finally came in the 82nd minute when Hannah Warren broke down the right, reaching the byline before cutting the ball back to Alex Dicks. Her mis-hit found Laura Mitchell, who was in the right place at the right time to fire home from eight yards and give The Pirates a crucial lead.

As QPR desperately pushed for an equaliser, Bedford struck again in stoppage time to seal the victory. A loose clearance found Amy McLean, who ran at the QPR defence before cutting back and squaring the ball to Dicks. The forward made no mistake this time, slotting home to open her account for The Pirates and secure the three points.

Real Bedford maintained their 100% start to the season, but QPR will feel frustrated and unlucky not to have taken something from the match.

RBFC Women: Guy, Warren, Puddick (Hayes 66'), Biggadike, Stovold, Mitchell (Price 88'), Wilson (Gould 66'), Bensted (Dicks 66'), Meola (McLean 82').



THE BIG INTERVIEW WITH JESS EVANS



Q: How have your first few months at Real Bedford been?

A: It's been fantastic! I've really enjoyed my time at Real Bedford. A new era is coming and I feel very privileged to be apart of it. UP THE PIRATES!

Q: What convinced you to join Real Bedford?

A: I was torn between a couple of clubs during pre-season, but what persuaded me about Real Bedford was two things. Firstly, Charlie & his staff have been nothing but phenomenal. They are driving such professional standards as well as developing us into champions. It's exciting to be apart of. Secondly, the girls are amazing! Everyone brings something to the table and everyone is valued. They are a group of players that are willing to die for the badge. I've never played with such a determined & resilient group of players.

Q: The Real Bedford squad looks very different this year; how has the team gelled?

A: Many of us have played together before, along with some new faces, and the squad has put in tremendous effort both on and off the pitch throughout pre-season. We've made significant improvements week after week, and I'm excited to see how we continue to progress in the coming months.

Q: Who have you connected with the most in the squad?

A: I've naturally gelled the most with the defensive unit—players like Hannah, Kerry, Puds, Sofia, and others. Each of them has taught me so much, and their understanding of the game has been eye-opening. It's been great developing alongside them and learning from their experience.

Q: How did it feel to play on the main stage at Loftus Road last week?

A: It was truly a bucket-list moment. Playing at Loftus Road with the team was an amazing experience, but what made it even more special was having my little boy, Finley, there. Sharing that moment with him on the pitch after the game was unforgettable. Not every day do you get to kick a few passes with your son on the turf at Loftus Road!

Q: After your first four games, how do you see the rest of the season unfolding?

A: We're building something really special at Real Bedford. Although we're a tier 4 club, we're operating with tier 3 standards, and everyone at the club is working tirelessly to be successful.

It's all about the fine margins, and I can confidently say that everyone involved with the Pirates is ready to give everything to this project. I have no doubt this season will be a successful one.

Q: Do you often score goals from defense?

A: I've scored a few, mainly from set pieces. I'm strong in the air and not afraid to throw my weight around to make sure I get on the end of the ball.

Q: Have you played or can you play in positions other than centre-back?

A: I'd consider myself a versatile player who can adapt to whatever the team needs. I've played centre-back, full-back, and even as a CAM. But in the last couple of seasons, I've mostly played CDM.

Q: What do you know about Chatham Town?

A: We know a bit about Chatham Town, as some of our squad have faced them in previous seasons. They're an aggressive team that will come at us right from the first whistle. We're ready for the battle and hungry to take all three points.

Q: What are your hopes for the season?

A: I'm hoping we can achieve promotion this season. The support for the women's team has been incredible, and it would be amazing to lift the trophy—not just for us as players, but for Charlie and his staff, the fans, and especially for Pete and his team. We're very fortunate to have Pete, and it would mean a lot to give something back to him at the end of the season. Right now, not many people know about Real Bedford, but that's fine by us. Champions are made when no one is watching. See you at the end of the season!

Jess Evans





What happens to your bitcoin if you die?

Since we haven't figured out how to live forever — you need a plan to pass your bitcoin to your loved ones.

It used to be confusing and complex to inherit bitcoin — a treasure map and a “bitcoin friend” they could call were all most families were left with.



Now — **with Casa Inheritance** — in just a few minutes you can set up a digital vault and ensure your family has easy access to your bitcoin, without reducing your security in life.

To learn more and receive 10% off your first year of Casa Standard go to casa.io/realbedford and use code **RBFC** when you sign up



TEAMMATES

CHIARA MEOLA

Who is most likely to be late for training?

Loz or Kerry.

Who is the most skilful player in the squad?

Tricia Gould, without a doubt!

Who has the worst dress sense?

Kerry, mainly because of her terrible football boots.

Who is the biggest coach's pet?

Darcy—she's going to hate me for saying that!



If you were stranded on a desert island, which teammate would you want to be stuck with?

Gemma. We might not survive, but we'd have the best time ever.

Who is the messiest in the changing room?

Puds. She's always doing something, like eating in the changing room.

Who is most likely to become a manager?

Jess. She's a natural leader and very motherly —having a kid helps!

Who has the best banter in the squad?

Gem, hands down. Sorry to all the other girls!



FOLD

Personal finance powered by bitcoin

PLAYER PROFILE

ABBIE BENSTED

Nickname:

Flabby (Thanks to Soph).

Favourite Team:

Arsenal.

Favourite Player:

Martin Ødegaard.

Favourite Footballing Memory:

Winning the league and BUCS gold with Loughborough Uni!

Hobby:

Golf—I'm obsessed! I picked it up two years ago after rupturing my ACL, and it turns out I'm pretty decent at it—currently playing off a 10.7 handicap. Anyone up for a round?

Favourite Song:

Anything by Khalid.

Footballing Idol:

Thierry Henry.

Previous Clubs:

London Bees, Loughborough Lightning, Oxford United. I'm embarrassed to admit it, but I also played for Spurs at one point...

Abbie Bensted





CHATHAM TOWN



Chatham Town women's team is an integral part of the club, embodying the same spirit and passion that has characterised the wider club for over a century. While the men's side has long been recognised for its contributions to non-league football, the women's team is rapidly building its own legacy, steadily growing in stature through hard work, dedication, and a commitment to the game.

The women's team began from modest beginnings but has gained momentum, striving to compete at higher levels while nurturing talent from the grassroots. Their journey reflects the increasing importance and recognition of women's football in the broader football community.

Known for their resilience on the pitch, the team often displays tactical discipline and a strong defensive setup, combined with an energetic midfield that seeks to control the tempo of the game. They play with the ethos that defines the entire club—hard work, community spirit, and a never-give-up attitude.

Community engagement is a core part of Chatham Town FC's philosophy, and the women's team actively participates in local events, supporting initiatives that encourage young girls to take up football. The club's commitment to promoting women's football in the region is evident, focusing on development and providing opportunities for female players of all ages. Their ambition is clear: to climb the ranks of women's football and make Chatham Town a respected name in the sport.

Chatham Town FC's vision extends beyond the pitch, with the women's team playing a crucial role in showcasing that football is a game for everyone. The club is continuously working towards providing better facilities, coaching, and opportunities for its women's side, reflecting a commitment to equality and the growth of the sport. As they continue to develop, Chatham Town FC Women are a team to watch, bringing pride to their fans and setting a strong example of what can be achieved with passion, community support, and a relentless drive to improve.

FIXTURES

AUGUST '24

18	ASHFORD TOWN	3 - 0 (W)
25	LONDON BEES	2 - 3 (W)
28	MK DONS *	3 - 0 (W)

JANUARY '24

5	QUEENS PARK RANGERS	H
12	CHATHAM TOWN	A

SEPTEMBER '24

1	QUEENS PARK RANGERS	0 - 2 (W)
8	CHATHAM TOWN	H
22	AFC SUDBURY	H
25	CAMBRIDGE UNITED	H

FEBRUARY '24

2	NORWICH CITY	H
13	CAMBRIDGE UNITED	A
23	AFC SUDBURY	A

OCTOBER '24

6	NORWICH	A
27	CHESHAM	H

MARCH '24

9	ACTONIANS	H
23	CHESHAM	A

NOVEMBER '24

10	LONDON SEAWARD	A
17	DULWICH HAMLET	H

APRIL '24

13	LONDON SEAWARD	H
27	DULWICH HAMLET	A

DECEMBER '24

8	ASHFORD TOWN	A
15	LONDON BEES	H

* LEAGUE CUP

TABLE

FAWNL - DIVISION ONE SOUTH EAST



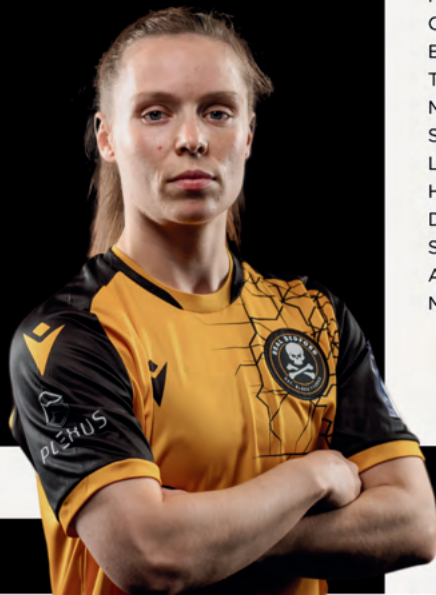
	CLUB	P	W	D	L	GF	GA	+/-	PTS
1	NORWICH CITY	3	3	0	0	10	2	8	9
2	REAL BEDFORD	3	3	0	0	8	2	6	9
3	ACTONIANS	3	2	1	0	4	2	2	7
4	CHATHAM TOWN	3	2	0	1	9	2	7	6
5	DULWICH HAMLET	3	2	0	1	10	3	7	6
6	AFC SUDBURY LADIES	3	1	1	1	4	7	-3	4
7	CAMBRIDGE UNITED	3	1	0	2	6	4	2	3
8	CHESHAM UNITED	3	1	0	2	5	9	-4	3
9	LONDON SEAWARD	3	1	0	2	2	7	-5	3
10	HOUNSLOW WFC	3	0	1	2	2	5	-3	1
11	LONDON BEES LADIES	3	0	1	2	4	9	-5	1
12	ASHFORD TOWN	3	0	0	3	1	13	-12	0

MATCHDAY SQUADS



BEDFORD

CHLOE SANSOM (GK)
LIBBY STRATTON (GK)
DARCY GUY (GK)
HANNAH WARREN
KERRY NEWMAN
JESS EVANS
ERIN PRICE
SOFIA STOVOLD
NICOLA PUDDICK
AMBER GAYLOR
GEMMA BIGGADIKE ©
MILLY HAYES
CHIARA MEOLA
EMILY WILSON
SYDNE NAYLOR
HANNAH DAVIES
MACEY HERD
LAURA MITCHELL
TRICIA GOULD
AMY MCLEAN
LEYLA O'BRIEN
ALEX DICKS
ABBIE BENSTED
SOPHIE BILLING



MANAGER Charlie Bill



CHATHAM

SIMONE AMELIA ELIGON (GK)
JASMINE AUGUSTE
OTESHA CHARLES
LOIS COLLEY
GRACE COOMBS
FAITH GILSON
MOLLYANNE HERBERT-SMITH
LACEY HERGEST
LIBBY HOMES
CIARA HYNES
ELLIE JEFFKINS
LUCY JONES
JESSICA KING
CHIEDZA MADAMOMBE
MEGAN MASLAK
OLIVIA MCGREGOR
ELLIE PERKINS
TYRA POOLE
MILLIE RAYNER
SALENA SAREEN
LOTTIE MAE SHARP
HOLLY THEOBALD
DARCY WELLS
SUMMER-LOUISE WIFFEN
AMELIA WOODGATE
MADISON WOODGATE

MANAGER Keith Boanas