

# THE HALVING #II

KNOW YOUR ENEMY

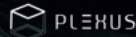
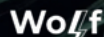
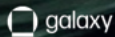
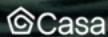
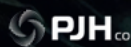
REAL BEDFORD V  
NORWICH



THE LEDGER STADIUM / THE EYRIE

SUN 2ND FEB '25 • 4:30PM KICK OFF

THE FA WOMEN'S NATIONAL LEAGUE  
DIVISION ONE SOUTH EAST





# Galaxy proudly champions Real Bedford Ladies FC

---



[galaxy.com](http://galaxy.com)



# THE PIRATES

CHAIRMAN  
**PETER MCCORMACK**

VICE CHAIRMAN  
**CONOR MCCORMACK**

CHIEF EXECUTIVE  
**EMMA FIRMAN**

CLUB SECRETARY  
**NEIL MCCORMACK**

MEDIA  
**SEB HENDRIX**  
**CURTIS TAYLOR**

CLUB HISTORIAN  
**GEOFF SEAGRAVE**

WOMEN'S FIXTURE SECRETARY  
**JENNY YILDIZ**

HONORARY SECRETARIES  
**LUI LA MURA**  
**ANDY GOODWIN**

MANAGER  
**CHARLIE BILL**

ASSISTANT MANAGER  
**MARK DASS**  
**LAURA BRIGHT**

COACHES  
**ED CAKE (GK)**  
**ETHAN WALLBANK (GK)**

PHYSIOS  
**BETH ADAMS**  
**ALEC MILLER**

KITMAN  
**GEZZA**

GROUNDSMAN  
**JACK MUDGE**

## CLUB HONOURS

23/24 EASTERN REGION LEAGUE WINNERS  
23/24 LEAGUE CUP WINNERS  
23/24 BEDS COUNTY CUP WINNERS

REAL BEDFORD FC LTD  
COMPANY NUMBER 13774571  
UNINCORPORATED MEMBERS CLUB

If you're pushing the  
boundaries of what  
Bitcoin can do – we  
want you.

---

**8-Week Accelerator Program in NYC**

WOLFNYC.COM





# CONTENTS



6

**CHAIRMAN'S NOTES**  
PETER MCCORMACK

9

**MANAGER'S NOTES**  
CHARLIE BILL

10

**CAPTAIN'S NOTES**  
GEMMA BIGGADIKE

14

**MATCH REPORT**  
V LONDON BEES

16

**MATCH REPORT**  
V CHATHAM

18

**MATCH REPORT**  
V AFC SUDBURY

21

**TEAMMATES**  
TAYLOR O'LEARY

25

**THE AWAY TEAM**  
NORWICH

26

**FIXTURES/TABLE**  
FAWNL SOUTH EAST DIV ONE

28

**MATCHDAY SQUADS**  
PIRATES V NORWICH

## CHAIRMAN'S NOTES



I'd like to extend a warm welcome to the players, staff, committee members, and fans of Norwich City as they join us at the Ledger Stadium today. Earlier this season, we faced off at The Nest in what was a hard-fought O-O draw. Both sides had their chances to win, but ultimately, a draw felt like the fair result on the day. However, we know today's match is a different occasion, with everything to play for as we enter the business end of the season.

At the start of the season, I set Charlie and the team a clear goal—compete for the league and push for back-to-back promotions. We've always believed Step 3 is the level where we should be. When we made our preparations, we fully expected Norwich to have similar ambitions, and they proved us right by flying out of the blocks and leading the league in the early stages. But football is a game of fine margins. While we both have dropped points along the way, certain moments stand out—

—such as our late goals against QPR and Actonians, which snatched crucial wins.

Norwich will have their own moments where they feel points got away, and if those results had gone differently, the table could look very different today. As it stands, we hold a four-point lead over Norwich with a game in hand, but we take nothing for granted.

We are under no illusions about how big this game is. Norwich know that if they win today, they close the gap to just one point. That result would not only bring them right back into the title race, but also allow Chatham to leapfrog us if they win their games, applying even more pressure with only eight matches to go. This is why I know Charlie will have the girls prepared for a battle today—we expect Norwich to come at us with everything they have, and we'll need to be at our best to ensure we take something from this game.



As we push towards the end of the season, we made an important addition to the squad last week with the signing of Breon Grant. Breon arrives from Billerica with a wealth of experience at higher levels, and she made an immediate impact on her debut against AFC Sudbury, stretching the opposition and creating two goals. While there's often talk about our budget, we actually operate within it carefully—but we are willing to strengthen the squad when the opportunity is right, and Breon is a perfect example of that.

With just nine league games to go, our target is clear: nine wins. If we achieve that, we win the league—simple as that. It's been an incredible effort to get to this stage of the season unbeaten, but we know that being unbeaten isn't enough. Too many draws can kill a promotion charge, and we've seen it happen to others before. That's why our mindset is clear—relentless pursuit of wins.

That brings me to a wider point about the structure of this league. Only one promotion place is simply not enough. It limits opportunity and distorts the competitiveness of the league. A playoff system—even a 2nd vs 3rd playoff—would keep teams fighting for something deeper into the season and create a more exciting end to the campaign.

Some worry about too many teams being involved in relegation battles, but I see it differently. A more competitive environment means clubs have to step up, invest, and improve, which only benefits the women's game in the long run.

Similarly, I believe the league should expand. Twelve teams is not enough, and it results in too many blank weekends without fixtures. A 14 or even 16-team league would add depth and ensure players get a full, competitive season. Yes, there may be a little more travel, but I've yet to meet a player unwilling to go the extra mile for more competitive football.

Finally, I just want to thank all of you for your support throughout this season. We've made huge strides as a club, and your backing has been vital. Hopefully, we can put in a strong performance today and keep the three points in Bedford.

Enjoy the game!



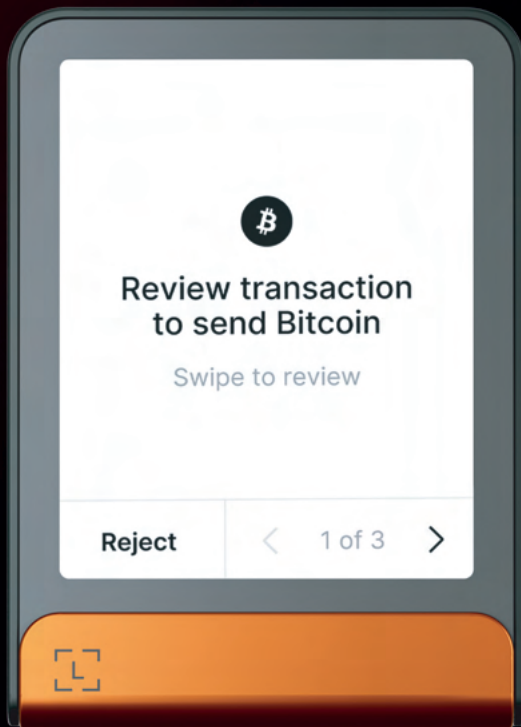
CHAIRMAN







# Not your keys, not your Bitcoin.



## MANAGER'S NOTES



Afternoon all, and welcome back to The Ledger Stadium as we prepare for another huge fixture, this time against Norwich City Women. We know the quality they bring, as one of the top sides at this level, and today promises to be another big test in our league campaign.

We come into this match on the back of a fantastic win last weekend against a strong Sudbury side. They hadn't lost in the league since August and had the chance to close the gap on us, so taking all three points was a massive result. More importantly, the manner in which we won was particularly pleasing—right from the first minute, we controlled the game and restricted them to not even registering a shot on target. With a long run of league fixtures ahead, consistency is key, and we must maintain those high standards every week.

Today, we welcome Norwich City, another top-three side who finished runners-up last season. We had a hard-fought battle against them earlier in the campaign, ending in a closely contested draw, so we know exactly what they're capable of. It's another tough challenge, but one we are fully prepared for.

From the first day of pre-season, we analysed what it would take to win this league. Looking at the data from the past four or five seasons, we knew we had to set the right mentality from the start. We also identified the teams that would likely be our biggest challengers.

Norwich, after last season's strong finish and with an experienced coach like Andy Cook at the helm, were always going to be up there. Chatham, having dropped down from Tier 3 and retained much of their squad, were another. Now, as we enter the final stretch, the table reflects what we expected— a three-team title race, with us building a points gap ahead of the rest.

We are fully motivated to push for another three points today. However, regardless of the result, we have put ourselves in a fantastic position to achieve our goal. By the end of today, we will have faced, in my opinion, the three best teams in the league twice—Norwich, Chatham, and London Bees—which will set us up well for the remainder of the season.

As with any title race, there will be twists and turns, particularly with a busy period ahead where we will play three games in 12 days. For now, though, our focus is solely on today—delivering our best performance and maintaining our momentum. With just four home league games left, we hope to continue building on the fantastic support from you all as the title race heats up.

Come on you Pirates!

*Charlie Bill*  
MANAGER

## CAPTAIN'S NOTES



Welcome back to the Ledger Stadium as we host Norwich City Women today! We knew from the start of the season that Norwich would be one of our toughest challenges. While we approach every game with the same mentality, we recognise that this fixture will test us in different ways, demanding adaptability and focus to come out on top. The squad were buzzing after our 4-0 win at the weekend, but as soon as we stepped into training, the focus immediately shifted to the task ahead. We have an excellent team of staff who have worked hard to prepare for this game, identifying ways to break Norwich down and put us in the best possible position to take all three points.

The last time we faced Norwich was much earlier in the season, away from home. They had a strong crowd and a great atmosphere, and you could feel that both teams understood the importance of the game. I expect the same intensity today. Looking back, a draw was probably a fair result on the day—we dominated large spells but lacked the clinical edge in the final third. That's something we've worked hard to improve on, and our recent results and goal difference are proof of that progress. The squad has really clicked in recent weeks, and with the addition of some fantastic new players, we're confident we have what it takes to get the win.

Norwich have had a strong season, and although they experienced a slight dip in form, they look to be finding their rhythm again. From the start of the campaign, we knew they'd be in the title race, and with experienced players and staff, they'll still have their eyes on the prize. For them, this game is huge if they want to stay in contention, and with that comes added pressure. For us, we're determined to stay unbeaten and maintain our position at the top.

Last weekend's performance against AFC Sudbury was another big step forward. The conditions were far from ideal, but the team showed resilience, playing some excellent football despite the rain and mud. It was fantastic to see Breon settle in so quickly, creating some great chances on her debut, and Leyla marking her return to the starting XI with a well-deserved goal. Every player gave their all, digging deep to secure another important win and keep our momentum going.

Now, all eyes are on today's challenge. We know what we need to do, and we're ready to give everything to get the result we want. Let's go out there, play our game, and keep pushing forward. Up the Pirates!

*Gemma Biggadike*

CAPTAIN





[www.botanixlabs.xyz](http://www.botanixlabs.xyz)

**Botanix Labs  
is proud to be  
Real Bedford  
FC's partner.**

 **Botanix**Labs

# The global leader in bitcoin recruitment.



**PLEXUS**

[www.plexusrs.com](http://www.plexusrs.com)



## What happens to your bitcoin if you die?

Since we haven't figured out how to live forever — you need a plan to pass your bitcoin to your loved ones.

It used to be confusing and complex to inherit bitcoin — a treasure map and a “bitcoin friend” they could call were all most families were left with.



Now — **with Casa Inheritance** — in just a few minutes you can set up a digital vault and ensure your family has easy access to your bitcoin, without reducing your security in life.

To learn more and receive 10% off your first year of Casa Standard go to [casa.io/realbedford](https://casa.io/realbedford) and use code **RBFC** when you sign up





# LATE EQUALISER DENIES REAL BEDFORD VICTORY AGAINST LONDON BEES

LEDGER STADIUM  
FA WOMENS NATIONAL LEAGUE • 15TH DECEMBER 2024



**Real Bedford were left frustrated as a late equaliser from London Bees denied them all three points in a 2-2 draw at The Ledger Stadium. Despite a strong start, the Pirates couldn't hold on to their lead, leaving the team to reflect on what felt like a missed opportunity.**

The game began with intensity, and Bedford wasted no time in asserting themselves. In just the 3rd minute, Tricia Gould dazzled the opposition with a sensational solo run, dribbling past several defenders and the goalkeeper before coolly slotting the ball into the net to give Bedford an early 1-0 lead.

The visitors responded quickly, though. In the 10th minute, a corner led to a scramble in the Bedford box, and London Bees' Burrows pounced, lashing the ball into the net to equalise.

Bedford pushed forward again, looking to regain their advantage. After 15 minutes, McLean released Gould down the left wing. Gould delivered a low-driven cross into the box for Meola, who struck first-time, but Hotiet's crucial block saved the Bees.

The visitors had a golden opportunity in the 34th minute when Heil split the Bedford defence with a perfectly timed through ball to Burrows. One-on-one with Sansom, Burrows rounded the keeper and looked certain to score, but Hannah Warren produced a heroic block to deny what seemed a certain goal.

The teams went into the break level at 1-1, with both sides showing flashes of quality.

## Second Half

Real Bedford came out of half time slowly, with Durn testing Sansom in the 47th minute. Her shot from the edge of the box was heading for the bottom corner, but Sansom made a fantastic save to push it wide.

Bedford began to apply more pressure, and in the 51st minute, Meola played a delightful through ball to Bensted, whose weak-footed shot narrowly missed the target. Substitute Milly Hayes almost produced a moment of magic in the 70th minute, unleashing a speculative effort from distance that beat the keeper but rattled the crossbar.

Moments later, Warren drove down the right and delivered a pinpoint cross for Gould, who was unmarked in the box. However, her shot from close range flew over the bar.

Bedford finally regained the lead in the 74th minute. Hayes floated a perfectly delivered corner into the box, where O'Leary was waiting at the back post to fire the Pirates into a 2-1 lead.

The goal was dedicated to Courtney Clarke who has just had to receive surgery after a bad injury she received recently.

As the game approached its conclusion, Amber Gaylor made her long-awaited debut in the 85th minute, returning from injury to a warm reception from the crowd. However, just as Bedford looked to be closing out the game, disaster struck in the 89th minute. Hoare sent a dangerous cross into the Bedford box, and Affri expertly volleyed it past Sansom to level the game at 2-2.

The full-time whistle blew, and while both teams earned a point, it felt more like a defeat for Real Bedford, who had worked so hard to hold their lead until the dying moments.

**RBFC Women: Sansom, Warren, Puddick, Biggadike, Evans, Stovold, McLean (O'Leary 71'), Gould, Mitchell (Gaylor 85'), Meola, Bensted (Hayes 64').**

**Unused subs: Guy.**





## REAL BEDFORD REMAIN SECOND AFTER 0-0 DRAW WITH CHATHAM TOWN

MAIDSTONE ROAD  
FA WOMENS NATIONAL LEAGUE • 12TH JANUARY 2025



In a highly anticipated top-of-the-table clash, Real Bedford and Chatham played out a goalless draw in a match with intensity but lacking a decisive breakthrough. Both sides showcased moments of quality, but defences held firm to deny any scoring opportunities.

Real Bedford began the game strongly, creating the better chances early on. In the 20th minute, Gould released Puddick down the left, but her effort soared over the crossbar.

Bedford continued to threaten, and in the 32nd minute, a goal kick was headed forward by Biggadike to Gould, who carried the ball towards the box and curled a shot towards goal. The Chatham keeper, however, was equal to it with a comfortable save.

The best chance of the half came deep into stoppage time when Puddick launched a brilliant solo counter-attack, charging from her own half into the penalty area. After rounding the goalkeeper, her goal-bound shot was denied by an incredible goal-line clearance, leaving the teams level at the break.

### Second Half

The second half saw Bedford push for a breakthrough, with Emily Wilson creating an early chance in the 54th minute. After a scrappy exchange in the box, Amy McLean's close-range effort was saved, leading to a corner.



Chatham began to grow into the game after the hour mark. Their first real chance came in the 61st minute, as a through ball for Woodgate was slightly overhit, allowing Sansom to intervene. Moments later, Jones fired a shot narrowly wide, and Augustine's cross from the left was well defended by Evans in the 68th minute.

Bedford pressed for a late winner, with Meola's shot from the edge of the box in the 75th minute just grazing the bar. Abbie Bensted had the best chance of the second half as her long range shot hit the crossbar. Deep into stoppage time, Amber Gaylor came close with a left-footed strike from the edge of the area, but it was saved by Eligon.

Despite their efforts, both teams had to settle for a point in a hard-fought 0-0 draw. Real Bedford will feel frustrated after creating the better chances.

**RBFC Women: Sansom, Warren, Puddick, Biggadike (Gaylor 87'), Evans, Stovold, McLean (O'Brien 69'), Mitchell (Wilson 45+1'), Meola, Gould, Bensted (Hayes 77').**

**Unused subs: Newman.**



## THE PIRATES GO TOP OF THE TABLE AFTER DOMINANT HOME WIN

LEDGER STADIUM

FA WOMENS NATIONAL LEAGUE • 26TH JANUARY 2025

BY WILL MURRAY



**Real Bedford moved to the top of the FAWNL Division One South East table with a 4-0 win against AFC Sudbury. Goals from Abbie Bensted, Leyla O'Brien and Amy Mclean secured the three points for the Pirates at The Ledger Stadium.**

Bedford dominated the early stages with new signing Breon Grant causing problems in behind Sudbury's backline. The deadline was broken in the sixth minute when Grant was released on the right wing before squaring it to Bensted, who dribbled past two defenders and smartly finished past the goalkeeper.

Charlie Bill's side didn't settle after the opener - creating numerous chances. Gemma Biggadike's corner found an unmarked Jess Evans in the 17th minute, but she could not divert her header goalwards. They came close again three minutes later when Bensted's cross found Grant in the box, but her first-time volley just over the bar.

Bedford made their pressure count in the 22nd minute as a lofted ball from Evans put Bensted one-on-one with the goalkeeper, and she calmly slotted the into the bottom left corner to double advantage.

The lead became three in the 29th minute when Grant intercepted a pass from a Sudbury defender before playing the ball through to O'Brien, who dribbled into the box and tucked the ball past Nina Meollo. O'Brien and Grant continued to link up with each other in the closing stages of the first half - both coming close to making it four - but the Pirates had to settle for a three-goal advantage at the break.



## Second Half

Sudbury frustrated Bedford in the first 15 minutes of the second half, with Lina Nagib holding the ball up well for the visitors. Despite this, O'Brien came close to doubling her tally in the 67th minute, as she was played through on goal by Biggadike, but she dragged her left-footed shot narrowly wide.

Seven minutes later, Emily Wilson played the ball through to Grant, who squared the ball to Bensted in the box, but she was unable to secure her hat-trick, grazing the top of the bar with her right foot.

Sudbury survived another Bedford attack in the 81st minute when a mistimed clearance allowed Grant to run through on goal, but she was denied by an impressive goalline clearance from Sheryce Slater. After missing a flurry of chances in the second half, it looked like the game was set to finish 3-0. McLean had other ideas, though, breaking through on the counter and hitting a left-footed shot in off the post to add a fourth for the Pirates, just before the final whistle.

After the game, Bill said:

*"We know being top of the league - you can't afford to not win games of football, so it'll be reset, review this game, and then be ready to go Tuesday, back in Thursday, and ready for another massive game on Sunday."*

**RBFC Women: Sansom, Warren (Newman 86'), Puddick, Biggadike, Evans, Stovold, Gaylor (Wilson 59'), O'Brien (McLean 72'), Meola (Hayes 81'), Bensted, Grant.**





PROPERTY REPAIRS,  
MAINTENANCE AND INSTALLATIONS

**CALL US - 0808 175 0987**



## TEAMMATES

# TAYLOR O'LEARY

**Who doesn't stop running during a game?**

Hannah Warren or Chi

**Who's got the fanciest haircut?**

Coach Ethan

**Who's always last to leave the training pitch?**

I'm not sure. A couple keen Karens get the cones out for an extra drill if the lights stay on

**Who's the worst driver?**

I have no idea... but, I'd like to shout out myself for saving a deer on the roadside!



**Who's most likely to become a manager when they retire?**

Puds

**Who has the worst dress sense?**

I don't socialise enough with these people to notice

**You're stranded on a desert island. Which teammate would you want with you?**

Bensted

**Who's the biggest joker?**

Gemma

**Who's your best mate in the squad?**

I'm tied between Bensted and Tricia

**Who's the biggest coaches pet?**

I'd say we all keep a safe distance



# Gemini is Proud to Sponsor Real Bedford and Their Journey to the Premier League

Football and digital assets share a common spirit of innovation and community, and our five year partnership with Real Bedford showcases how digital assets can play a crucial role in the traditional world of sports. Real Bedford sets a pioneering example for other clubs and businesses, demonstrating the revolutionary potential of digital currencies to provide growth opportunities, and the collaboration signifies a major step forward in the convergence of football and digital assets.

Gemini's sponsorship, paid in Bitcoin, is one of the longest multi-year shirt deals outside of the UK's professional leagues. This innovative approach helps safeguard against high inflation while supporting the club's plans for a new training center and a youth academy for underprivileged children in Bedford.

Last year, our Co-Founders invested \$4.5 million into the club, and since then we've seen Real Bedford achieve two consecutive league promotions and multiple cup wins, boasting an impressive 81% win rate. This partnership reaffirms our belief in Real Bedford's potential to defy the odds and challenge the establishment, and we are excited for the club's future achievements.

Gemini is honored to be part of Real Bedford's journey and look forward to supporting the club's continued success both on and off the pitch!

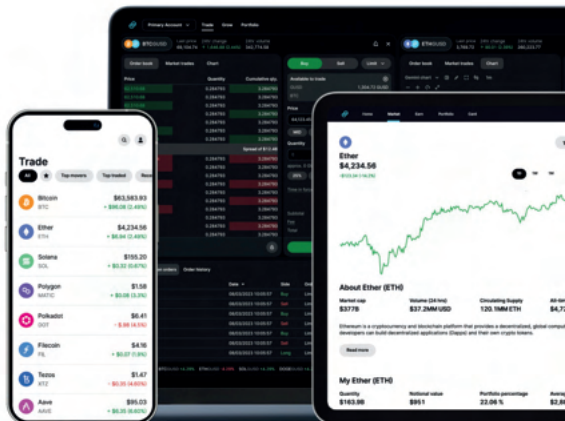
**Onward and Upward!  
The Gemini Team**



**Buy, sell, and store  
bitcoin and 90+ cryptos**  
Get started today at [gemini.com](https://gemini.com)

Cryptoassets remain high risk. Don't invest unless you're prepared to lose all the money you invest. This is a high-risk investment and you should not expect to be protected if something goes wrong.

Cryptoasset services are provided by Gemini Intergalactic UK, Ltd. You should note that your crypto asset profits may be subject to capital gains tax.





# ASHFORD TOWN V REAL BEDFORD

SUN 9TH FEB • 2PM KICK OFF • HANWORTH VILLA



VS







# FOLD

Personal finance powered by bitcoin



# NORWICH



Norwich City Women currently play in the FA Women's National League Division One South East; the fourth tier of English women's football, under head coach Shaun Howes.

The Canaries were formed in 1998 when local rivals Norwich Ladies and Norwich Racers joined forces. The former team are still the only Norwich side to have lifted the FA Cup trophy, which was won in 1986 after a dramatic last-gasp winner against the favourites, Doncaster Belles.

The club moved to its current home ground The Nest in the 2020/21 season, after moving out of the previous home of Plantation Park.

The 2021/22 season saw the club formally integrate into the men's first team under the guidance of executive director Zoe Webber. This strategic move saw overall operation and control of the Norwich City Women team brought in-house with the aim of driving further development and progress in this area.

The appointment of general manager Flo Allen has provided structure and organisation to the club, supporting the squad on a day-to-day basis.

The Canaries have collected plenty of silverware to their name, including six Norfolk County Cup trophies, last won in 2021 after a 7-0 final win over Mulbarton Belles.

The club were particularly proud to follow the 2022 Women's Euros coverage, especially of Norfolk-born Lauren Hemp, who started her youth footballing career under the guidance of Norwich City Girls Centre of Excellence.

The 2022/23 season saw seven new signings to the squad, following the return of some familiar faces and specially selected individuals brought in to further the squad's talent.

The 2023/24 campaign City's highest finish in Division One South East, missing out on promotion by one place and seven points. They remained unbeaten all season until the final day, where they lost out 1-0 to Ashford Town.

In 2024/25, the Canaries appointed head coach Andy Cook, who joined City from Newcastle United Women as assistant head coach. The club also made ninety new signings, six of which all came through Norwich City's academy development programme.

# FIXTURES

## AUGUST '24

18	ASHFORD TOWN	3 - 0 (W)
25	LONDON BEES	2 - 3 (W)
28	MK DONS *	3 - 0 (W)

## SEPTEMBER '24

1	QUEENS PARK RANGERS	0 - 2 (W)
8	CHATHAM TOWN	1 - 1 (D)
22	AFC SUDBURY	P - P
25	CAMBRIDGE UNITED	0 - 0 (D)
25	GWALIA UNITED *	1 - 2 (W)

## OCTOBER '24

6	NORWICH	0 - 0 (D)
13	CAMBRIDGE UNITED **	3 - 1 (L)
20	MONEYFIELDS *	1 - 5 (W)
27	CHESHAM	12 - 2 (W)

## NOVEMBER '24

10	LONDON SEAWARD	1 - 7 (W)
17	DULWICH HAMLET	3 - 0 (W)

## DECEMBER '24

1	HASHTAG UNITED *	4 - 0 (L)
8	ASHFORD TOWN	P - P
15	LONDON BEES	2 - 2 (D)

## JANUARY '25

5	QUEENS PARK RANGERS	P - P
12	CHATHAM TOWN	0 - 0 (D)
26	AFC SUDBURY	0 - 4 (W)

## FEBRUARY '25

2	NORWICH CITY	H
13	CAMBRIDGE UNITED	A
23	AFC SUDBURY	A

## MARCH '25

9	ACTONIANS	H
23	CHESHAM	A

## APRIL '25

13	LONDON SEAWARD	H
27	DULWICH HAMLET	A

\* LEAGUE CUP

\*\* FA CUP



TABLE

FAWNL - DIVISION ONE SOUTH EAST



	TEAM	P	W	D	L	GF	GA	+/-	PTS
1	REAL BEDFORD	13	8	5	0	39	9	30	29
2	CHATHAM TOWN	13	8	4	1	24	8	16	28
3	NORWICH CITY	14	7	4	3	36	14	22	25
4	ACTONIANS	14	7	4	3	27	16	11	25
5	LONDON BEES	13	5	5	3	34	22	12	20
6	AFC SUDBURY	12	5	5	2	20	21	-1	20
7	CAMBRIDGE UNITED	14	6	1	7	26	22	4	19
8	QPR	12	5	4	3	17	15	2	19
9	DULWICH HAMLET	13	5	2	6	22	20	2	17
10	CHESHAM UNITED	14	3	2	9	22	50	-28	11
11	LONDON SEAWARD	15	1	1	13	9	41	-32	4
12	ASHFORD TOWN (MIDDLESEX)	13	1	1	11	14	52	-38	4

# MATCHDAY SQUADS



## PIRATES

CHLOE SANSOM (GK)  
DARCY GUY (GK)  
HANNAH WARREN  
KERRY NEWMAN  
JESS EVANS  
COURTNEY CLARKE  
SOFIA STOVOLD  
NICOLA PUDDICK  
ROSIE MCDONNELL  
AMBER GAYLOR  
GEMMA BIGGADIKE ©  
MILLY HAYES  
TAYLOR O'LEARY  
CHIARA MEOLA  
EMILY WILSON  
SYDNE NAYLOR  
HANNAH DAVIES  
MACEY HERD  
LAURA MITCHELL  
TRICIA GOULD  
AMY MCLEAN  
LEYLA O'BRIEN  
ALEX DICKS  
ABBIE BENSTED  
SOPHIE BILLING  
BREON GRANT

**MANAGER** Charlie Bill



## NORWICH

SARAH QUANTRILL (GK)  
CHARDONNAY JOHNSTON  
ELLIE BISHOP  
CERI FLYE  
ELOISE MORRAN  
MEGAN TODD ©  
MILLIE DAVISS  
ELLIE SMITH  
NATASHA SNELLING  
TAMSIN MEDD-GILL  
ELLA POWELL  
KATIE KNIGHTS  
LARA DENSLEY  
FREYA SYMONDS  
LAUREN HAILES  
ISSY MOORE  
LAUREN TOMLINSON  
SHANNON SHAW  
OLIVIA COOK  
JESS BARNES  
HOPE STRAUSS  
SIENNA BOOTY  
HOLLY KENNARD  
AMBER LOCKER (GK)  
DREW WILSON  
POPPY FRANCIS

**MANAGER** Andy Cook