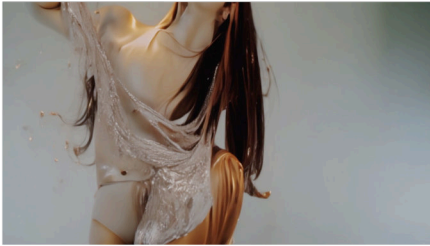


A Tender Limb

Ibuki Kuramochi, Marley White, Allison Arkush

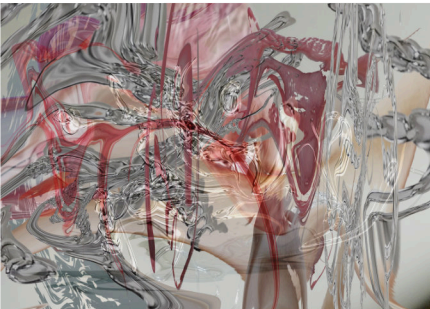
January 27 - February 24, 2024



Ibuki Kuramochi
Liquid Senses
2024
Video (Displayed on Ipad)
1920 x 1080 HD, 1 min 51 sec
Edition 2/2



Ibuki Kuramochi
Down to Me
2024
Video (Displayed on TV)
1920 x 1080 HD, 3 min 16 sec



Ibuki Kuramochi
Surrender to the Flow
2024
Digital Media, Printed on Acrylic, Chain
20 x 30 in
Edition 1/1



Ibuki Kuramochi
Between the Tides
2024
Digital Media, Printed on Acrylic, Chain
16 x 20 in
Edition 1/1



Ibuki Kuramochi
Where Souls Mingle
2024
Digital Media, Printed on Acrylic, Chain
12 x 16 in
Edition 2/2

REISIG AND TAYLOR CONTEMPORARY

+1 323.819.7990

reisigandtaylorcontemporary.com

2680 S. La Cienega Blvd, Los Angeles, CA 90005 galler@reisigandtaylorcontemporary.com

A Tender Limb

Ibuki Kuramochi, Marley White, Allison Arkush

January 27 - February 24, 2024



Marley White
Little girl
2024
Wood, tile, red clay, string, rubber gloves, plastic clover,
steel, joint compound
14 x 38 x 20 in



Marley White
Goes it alone
2024
Pine, tile, concrete finial
91 x 22 x 28 in



Marley White
View of a woman bathing
2024
Wood, tile, string, red clay (dug up in Travelers Rest, SC),
nails, cubic zirconia, bathtub plug
70 x 23 x 98 in



Marley White
Inside of a window (1, 2, 3 of 3)
2024
Steel
3.5 x 8.5 x 4 in
4 x 5 x 4 in
4.5 x 8 x 5 in



Marley White
Sheep with broken leg
2024
Steel
39 x 29 x 28 in



Marley White
Thank you kindly
2024
Steel
30 x 18 x 24 in

A Tender Limb

Ibuki Kuramochi, Marley White, Allison Arkush

January 27 - February 24, 2024



Allison Arkush

Ceramic Paper Chain (manganese grey arc), 2022

Nebraska brick clay with paper fiber, glaze, tip-ties.

13 x 15 x 2 inches

Ceramic Paper Chain (copper green arc), 2022

Nebraska brick clay with paper fiber, glaze, hemp rope.

22 x 12 x 2 inches



Allison Arkush

Ceramic Paper Chain Bunting

2022

Nebraska brick clay with paper fiber, glazed ends.

Measurements variable



Allison Arkush

Fence Mold

2016

Latex, burlap, hydrocal traces

22.5 x 23 in

Allison Arkush

Endicott Egg Sack

2022

Nebraska Endicott brick clay, iron nails

20 x 6 x 2 in



Allison Arkush

Rusty + Knitting Composition

2018

Porcelain slip burnout with glaze, rusty iron, cotton rope, waxed linen thread, nails

Measurements variable



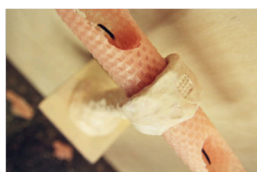
Allison Arkush

Multitool with base, on Post-In-Bucket

2024

Nebraska brick clay, glaze, scrap wood, hemp rope, plasti dip, heat shrink tube, pencil nub, apoxie clay, colored pencil, brad nails. Perforated steel L-tube, pitcher plant pruning [species: Sarracenia (Dana's Delight x (gilpinii x rubra) x minor okefenokeensis) Clone B], quikcrete, plastic bucket.

48 x 17 x 12 in



Allison Arkush

Both Ends Candle and Holder

2015

Beeswax sheet, cotton wick, earthenware with underglaze.

4 x 2.5 x 8 in

REISIG AND TAYLOR CONTEMPORARY

+1 323.819.7990

reisigandtaylorcontemporary.com

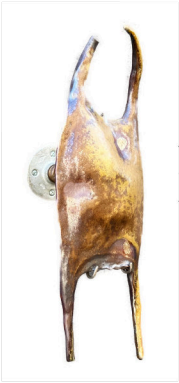
2680 S. La Cienega Blvd, Los Angeles, CA 90005

gallery@reisigandtaylorcontemporary.com

A Tender Limb

Ibuki Kuramochi, Marley White, Allison Arkush

January 27 - February 24, 2024



Allison Arkush
Eight Days Egg Sack
2017
North Carolina stoneware wood-fired for eight days, welded steel, steel hardware
16 x 6 x 7 in

Allison Arkush
Egg Sack Festoon 1, 2, 3 of 3
2022
Porcelain casting slip, glaze, hemp rope, stainless steel hardware.
16 x 5.25 x 2 in each



Allison Arkush
Three Then Two
2016
Found window-mirror, beeswax, dried beta fish, dried discus fish, dried frogs, sea sponge, hardware
16.5 x 16 x 2.5 in



Allison Arkush
Window Box
2018
Found wooden box, found wooden shutters, earthenware slip burnout of muslin curtains, milk paint, fabric, encaustic medium, LED.
18.75 x 14 x 7.5 in



Allison Arkush
Ceramic Fence
2017
North Carolina stoneware wood-fired for eight days on oyster shells, aluminum mesh, vinyl coated wire rope, zip-ties.
21 in tall, 27 x 16 in variable circumference

Allison Arkush
Ceramic Burnout Studies, 1 through 9
2019-2020

Porcelain slip burnouts of muslin or linen or paper.
Some with stains, some with glaze, some with nichrome wire.
Measurements vary



Allison Arkush
Ceramic Burnout (hanging muslin bundle)
2019
Porcelain slip burnout, iron oxide, glaze, nichrome wire.
10 x 4.5 x 3 in

Allison Arkush
Ceramic Burnout (black waffle fabric)
2019
Porcelain slip with black mason stain burnout, glaze, nichrome wire rod.
6 x 10 x 2 in



REISIG AND TAYLOR CONTEMPORARY

+1 323.819.7990

reisigandtaylorcontemporary.com

2680 S. La Cienega Blvd, Los Angeles, CA 90005

gallery@reisigandtaylorcontemporary.com