



Community Engagement Live Webinars

March & April 2022

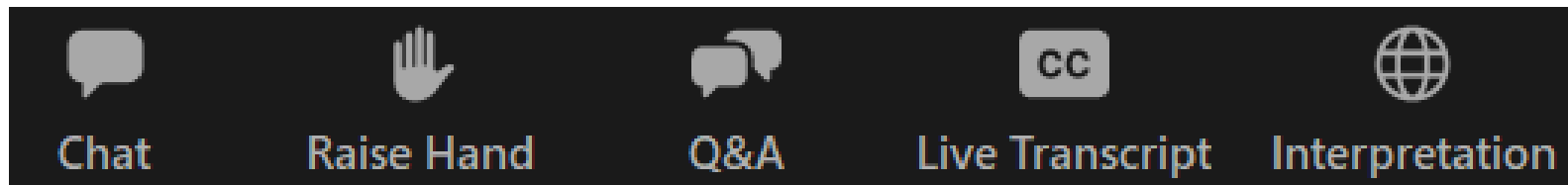
Welcome!

Thank you for attending your region's
Community Engagement Live Webinar.

Tonight's session will be recorded and shared on YouTube.

We will be offering live Spanish interpretation this evening.

Please submit your questions into the Q&A box.



Vision

Reimagining a more **equitable** Early Childhood Education and Care (ECEC) system that ensures **family and community voice is centered and prioritized** at every level of decision-making in Illinois.



Mission

To create a statewide regional infrastructure that will amplify input from communities in the development of policies and funding priorities. We mobilize communities to build and sustain equitable access to inclusive, high-quality early childhood services for all children and families in the state of Illinois.



www.birthtofiveil.com



Values/Goals

- Family Voice
- Racial Equity
- Collective Impact



Our State Team



SHE/HER

Cicely Fleming

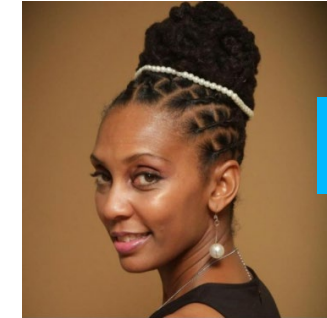
STATE DIRECTOR



SHE/HER

Sonja Clark

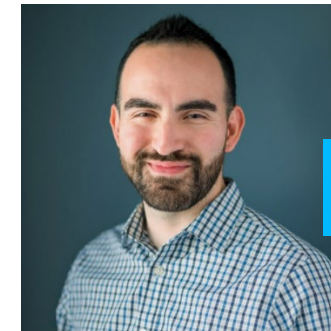
DIRECTOR OF
OPERATIONS



SHE/HER

Dena Chapman

FAMILY & COMMUNITY
ENGAGEMENT MANAGER



HE/HIM

David Quiroz

FAMILY & COMMUNITY
ENGAGEMENT COORDINATOR



THEY/THEM

Jes Scheinflug

PROJECT
COORDINATOR



SHE / HER

Maggie Koller

COMMUNICATIONS
MANAGER



SHE/HER

Angela Hubbard

GRANTS & RELATIONSHIPS
MANAGER

Area Coordinators



SHE/HER

Karen M. Nunnally

AREA 1



SHE/HER

Diana Merdian

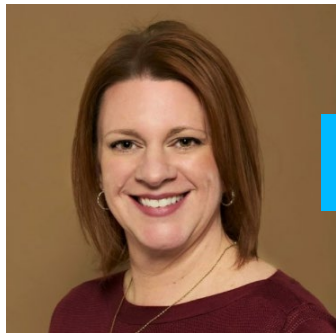
AREA 2



SHE/HER

Jacqui Jones

AREA 3



SHE/HER

Dana David

AREA 4



SHE / HER

Kim Hunt

AREA 5



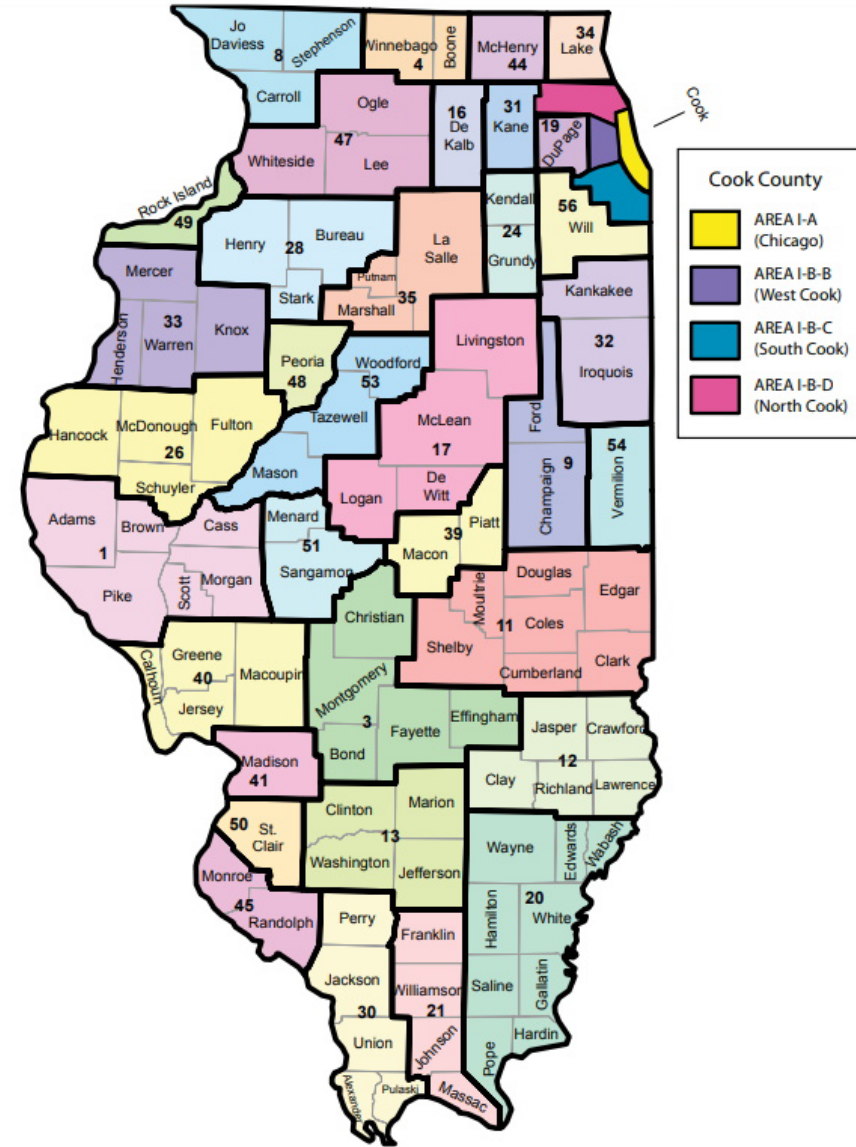
SHE/HER

Lori Longueville

AREA 6

Birth to Five Illinois

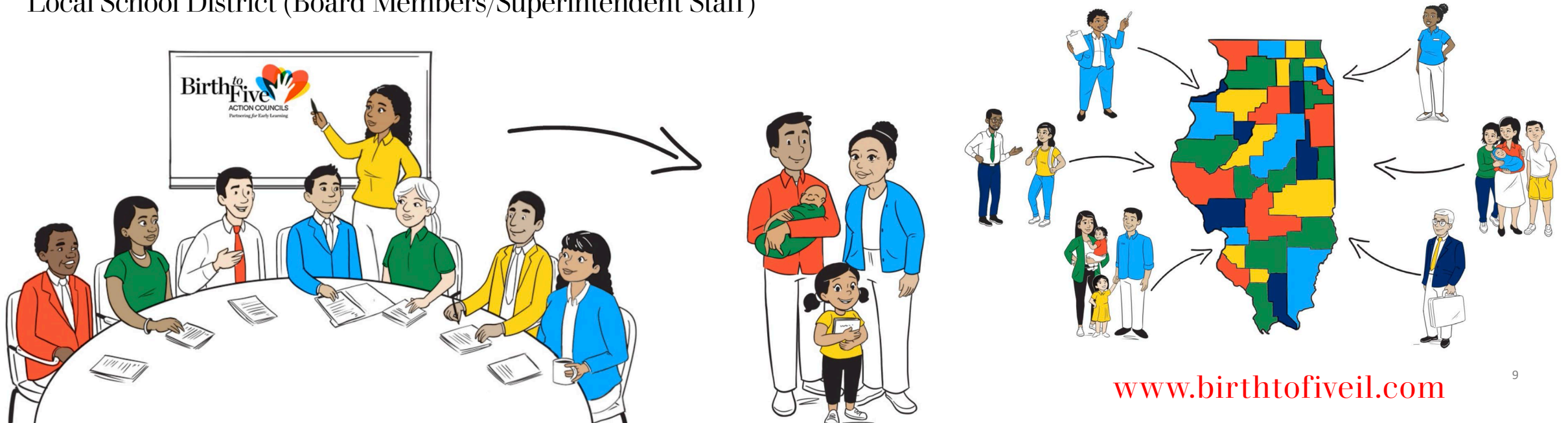
- In partnership with INCCRRA
- 39 Action & Family Councils that operate independently but share existing ISBE Regional Offices of Education boundaries
- Efforts aim to match policy making & funding distribution at the state level with local needs
- Dedicated staff in each region



Serving on Your Birth to Five Action Council

Key roles for Birth to Five Action Councils include:

- Parents/Family Members
- Community Members from an Underrepresented Population
- Local Early Childhood or Education Collaboration Members
- Head Start or Child Care Center Staff
- Family Child Care Staff
- Early Educators/Home Visitors/Early Intervention Providers
- Staff from a Regional Office of Education
- Local School District (Board Members/Superintendent Staff)
- Local or County Elected Officials
- Healthcare Employees
- Higher Education Employees
- CCR&R/Coordinated Intake Staff
- Business Representatives/Chamber of Commerce Members
- Members of the Faith Community
- Other



What will Action Councils do?

- Identify gaps
- Amplify family voice
- Work with local coalitions
- Communicate with the community
- Collaborate with the State Team
- Conduct a Regional Scan
- Create an Annual Report



Requirements & Commitments: Action Council Members

- Must live, work, or receive early childhood services in the region
- Volunteer leadership role
 - Meetings anticipated 2x per month
 - 1-2 year commitment
- Stipend for family members



Serving on Your Birth to Five Family Council

- Families with children under age 8 and/or experience with Illinois' early childhood education and care services are eligible
- Family Councils will each have around 15 members



What will Family Councils do?

- Serve as an advisory committee to the Action Council
- Share critical input
- Give feedback
- Advocate for family needs
- Identify gaps
- Raise issues of concern from the community



Requirements & Commitments: Family Council Members

- Seeking diverse family representation
- Paid leadership role
 - Meetings anticipated 2x per month
 - 1-2 year commitment



Serving on a Birth to Five Selection Committee

- Volunteer opportunity for local residents
- Requirements:
 - Live, work, or receive services in the region
 - Not have applied to be on a Council
- Anticipated commitment 2-3 weeks once applications close



Partnering with Community Collaborations

- Complementary
- Efforts to align
- Regional planning underway
- Enhanced family engagement
- \$1M funding opportunity Spring 2022



Next Steps & How to Get Involved

- Complete an Interest Form
 - Action Council: www.birthtofiveil.com/action
 - Family Council: www.birthtofiveil.com/family
 - Selection Committee: www.birthtofiveil.com/selection
- Visit our website: www.birthtofiveil.com
 - Check out our FAQs: www.birthtofiveil.com/faqs

Next Steps & How to Get Involved

- Apply for an Open Position: www.birthtofiveil.com/jobs
- Subscribe to email communications: www.birthtofiveil.com/#newsletter
- Connect with us on social media:
 - [Facebook](#)
 - [Twitter](#)
 - [Instagram](#)
 - [LinkedIn](#)
 - [YouTube](#)





Q&A

Next Steps & How to Get Involved

- Complete an Interest Form
 - Action Council: www.birthtofiveil.com/action
 - Family Council: www.birthtofiveil.com/family
 - Selection Committee: www.birthtofiveil.com/selection
- Visit our website: www.birthtofiveil.com
 - Check out our FAQs: www.birthtofiveil.com/faqs



Thank you!

