

30TH

Since 1992

LISCO & M DIAMOND

ANGUS BULL SALE

FRI 25 MARCH 2022 - 1 PM

☆☆☆ OFFERING

120 ANGUS BULLS

OVER 50 BULLS SUITABLE FOR USE ON
FIRST-CALF HEIFERS

ALL BULLS PAP TESTED FOR USE ON
HIGH-ALTITUDE RANCHES

30 YEARLING
HEIFERS

LOCATION: **M DIAMOND ANGUS RANCH**

GLENROCK, WYOMING | VISIT WWW.MDIAMONDANGUS.COM AND LISCOANGUS.COM

SALE BROADCAST LIVE VIA INTERNET ON

DVAuction
Broadcasting Real-Time Auctions

Welcome Cattleman and Friends!

We would like to invite you to our 30th annual Bull Sale March 25, 2022 at M Diamond Angus Ranch @1:00pm. It's hard to believe that the Boner and Lisco families are going to host our 30th Bull Sale. Friendship and a common view point about raising good functional cattle brought our two families together, but it is the support and belief in our programs from our customers that have kept us going for 30 years. We would like to thank those who have supported our programs and welcome those of you attending for the first time. The friendships we have made over the last 30 years are one of the true treasures of this business. Brad and I have had the opportunity to watch each of our families grow and are proud to have Brad's son Ryan, and nephew, Trent, along with my two sons, Jordan and Taylor, join our programs, what a blessing they have been.

The sale will be held at M Diamond Angus Ranch. Directions to the ranch are included on the inside back cover of this catalog. Plan to be our guests for lunch starting at 11 :00 a.m., and please join us for the hospitality afterward.

Our Registered Angus cattle are truly BORN and BRED to THRIVE under the tough range conditions known to Wyoming. That being so true with the limited amount of moisture we had last summer and the sub-zero temperatures we typically experience in throughout calving season. The calves are raised on mama's milk, grass and lots of Wyoming scenery. Mother Nature is allowed to take its course so we can identify those with the "DRIVE to THRIVE." With fluctuating markets and ever changing range and weather conditions, the Angus female is and will always be at the forefront of our breeding programs. We demand our cows utilize the available forage and convert it efficiently in order to breed back on time and bring in a big, healthy calf at weaning. We also place a great deal of emphasis on the traits not measured by EPDs, fertility, fleshing ability, mothering ability, udder quality, disposition and structural soundness.

The yearling bulls are again being fed in Hemingford, NE, at the Bolek Feedlot, Gary and Brad do an outstanding job of allowing the bulls to express their genetic potential, yet maintain their functionality and soundness as range bulls. If you are in the area please feel free to stop in and take a look. Once again we will be offering some excellent "long aged" bulls (summer calved) from M Diamond Angus and an outstanding set of 2 year old bulls from Lisco Angus. These bulls are at the ranch and can be viewed anytime. Videos of the bulls should be viewable the first week in March by going to dvauction.com or mdiamondangus.com. The bulls have also been PAP tested by Dr. Lanny Weddle and he would be glad to answer any of your questions at 970-723-8314.

All the bulls in the sale have passed a breeding soundness exam, tested negative for PI BVD and have been PAP scored. The bulls will be at M-Diamond Angus Ranch by noon on March 22, 2022, for inspection prior to the sale. If you have any questions, please feel free to call or e-mail.



Dick and Brad standing in front of their "vintage" sign from the Glenrock sale barn where the sale was held until 2013



LISCO & M DIAMOND

ANGUS BULL SALE

FRIDAY MARCH 25, 2022

1 P.M. | AT M DIAMOND RANCH

361 COLE CREEK RD. • GLENROCK, WY 82637

SIGHT UNSEEN PURCHASES

If for some reason you are unable to attend the sale, but wish to place a bid, feel free to call us and we will handle your bid as if you were here. If you wish to be on the phone during the sale, we will do our best to accommodate your request. Please let us know in advance so arrangements can be made. We have also partnered with DV Auction to offer online bidding and purchasing options. All sight unseen purchases are fully guaranteed.

George Marcy - 308-430-2005

Dick Lisco - 307-359-0167

Brad Boner - 307-359-1162

AUCTIONEER - LEX MADDEN

(307) 532-1580

LIVESTOCK PRESS

REPRESENTATIVES

Wyoming Livestock Roundup

Curt Cox (307) 630-4604

Tri State Livestock News

Scott Dirk (605) 380-6024

SALE CATALOG & SUPPLEMENTAL INFORMATION

To view the online catalog, supplement sheets for weights and scrotals, video of selected lots and sale order, go to mdiamondangus.com or liscoangus.com

LISCO & M DIAMOND ANGUS. CATTLE BORN & BRED WITH THE DRIVE TO THRIVE

Welcome and we hope to see you Friday March 25th, 2022 for the Lisco/M Diamond 30th Annual Bull and Female Sale.

This is a great set of balanced beef bulls that will provide the genetics to positively impact your bottom line. The genetics bred into these cattle for generations will provide you with a uniform, balanced genetic package to sire deep, thick, easy doing cows with great udders.

It's easy to breed extremes, but these cattle are bred for balance to work in ALL IMPORTANT TRAITS under tough range conditions.

They produce females that truly do have the DRIVE TO THRIVE under the demanding range of the high plains and mountains.

Please give me a call if I can help with your selections or assist you in any way.

GEORGE MARCY, MARCY LIVESTOCK SERVICES, CELL: (308) 430-2005

SALE INFORMATION

SALE TIME: 1:00 p.m.

INSPECTION: Cattle are available anytime at Bolek Feedlot in Nebraska and will be at the ranch March 22 through the sale date.

RETAINED INTEREST: All bulls selling will have 1/3 semen interest and 1/3 revenue-sharing interest retained by Lisco or M Diamond Angus. Full possession sells on all bulls.

WINTERING: Yearlings will be delivered starting the first week of April. Two-year-olds and summer bulls must be taken immediately. Note the discount for bulls taken on sale day.

DELIVERY: Free on all bulls within a 500-mile radius. For further distances please call; arrangements can be made for assistance if Lisco/M Diamond is contacted ahead of time. Deduct \$50 per bull from purchase price if you haul yourself. Females are the responsibility of the buyer, but we will assist with arrangements for females.

SEMEN EVALUATION: Bulls have passed fertility testing and are guaranteed breeders.

PAP SCORES: All bulls have been PAP tested. **Yearling and summer bulls will have a supplement sheet of the scores sale day and we will have them up on our website as soon as possible.**

ULTRASOUND: All bulls have been ultrasounded. Results are included in the catalog.

DESIGNATED CALVING EASE: We have marked the bulls we think will work on heifers. Please use your own judgment.

- ** Should work on all heifers
- * Should work on larger heifers

SALE DAY WEIGHT: All bull weights will be listed on a supplement sheet that will include their actual weight and scrotal measurement the week of the sale. Video of all lots, supplement sheets and sale order can be viewed at www.mdiamondangus.com or www.dvauction.com. Just click on "Sale Catalogs" and then "Lisco/M Diamond" to view.

HERD HEALTH: All cattle sell with proper health papers for interstate shipment. A rigid herd health program has been followed. All bulls sell guaranteed or tested free of all known genetic defects by DNA test or pedigree. All bulls tested negative for PI BVD.

TERMS AND CONDITIONS: These cattle sell

Catalog designed by:



KROSECOMPANY.COM

CAN'T MAKE THE SALE?

Buyers unable to attend the sale may send bids to Dick Lisco, Brad Boner or Marcy Livestock Services.

Satisfaction guaranteed on all phone bids.

OR

DVAuction
Broadcasting Real-Time Auctions

VISIT WWW.DVAUCTION.COM AND REGISTER!

1. Create and account at www.dvauction.com under the "create new account" tab.
2. Apply for bidding by clicking "apply for bidding" in the upper left corner, at least 24 hours prior to the auction.
3. Tune into the sale and make your purchases.

FIRST YEAR BREEDING SEASON GUARANTEE

Lisco/M Diamond will cover 50 percent of the value of bulls selling for \$3,000 or more if they are injured during their first breeding season. Breeding season is defined as the 90-day period following the first turnout of the bulls.

Fifty percent of the value of the injured bull, minus one-half salvage value, will be given as credit in a following sale or toward a replacement bull if one is available. Salvage value, if any, will be split equally between Lisco/M Diamond and the buyer. All injured bulls must be diagnosed by a veterinarian. Please notify us as soon as possible should injury occur and prior to the injured bull being sold for salvage. All claims must be made by Sept. 1, 2022.

Example: A \$5,000 bull is injured and will not heal. A credit of \$2,500 minus one-half of any salvage value will be given to the buyer.

Example 2: A \$3,000 bull is injured and will not heal. A credit of \$1,500 minus one-half of any salvage value will be given to the buyer.

Example 3: A \$2,900 bull is injured and will not heal. No credit is given. Buyer retains all salvage value.

THIS GUARANTEE DOES NOT COVER MISMANAGEMENT OR NEGLIGENCE.

GENOMIC-ENHANCED EPDS

As some of you may have heard, the American Angus Association has changed from a “Multi-Step” process to a “One-Step” process for Genomic-Enhanced EPDs. Having witnessed firsthand the tremendous inaccuracies with the Multi-Step process, it seems prudent, at least right out of the gate, to be suspect of the accuracy of the new One-Step process. Many in academia are claiming it’s an accurate selection tool, but they made the same claims of the Multi-Step process.

Providing our CUSTOMERS with ACCURATE data in order to help you in your bull-buying decisions is of the UTMOST importance to us. We take the responsibility of providing you with quality seedstock very seriously. Therefore, we believe it’s in our customers’ best interest to take a wait-and-see stance on the new One-Step process. For these reasons we have not printed any Genomic-Enhanced EPDs in our catalog.

In an effort to study, monitor and learn about the new One-Step process, we have DNA tested specific lot numbers and that information will be available sale day. You can view their One-Step Enhanced EPDs two ways. We will have them available sale day or a few days prior to the sale. They should also be available if you type in the bull’s name or registration number at www.angus.org/Animal/EpdPedSearch.aspx.

Please feel free to call us prior to the sale if you want to discuss this topic further.



REFERENCE SIRES

A

U-2 COALITION

DOB: 1/23/2015 REG: 18626847

CONNEALY CONSENSUS 7229

HF SYNDICATE 213Z

HF MISS BLACKCAP 27R

YOUNG DALE XCLUSIVE 25X

U2 ERELITE 109Z

U-2 ERELITE 1X

CONNEALY CONSENSUS
BLUE LILLY OF CONANGA 16
TC FREEDOM 104
HF MISS BLACKCAP 50N
YOUNG DALE KNOCK OUT 134U
YOUNG DALE POLLYANNA 60T
S A V FINAL ANSWER 0035
U-2 ERELITE 8109U



CED	BW	WW	MILK	YW	SC	\$M	\$W	\$F	MARB	RE
+9	+80	+58	+24	+117	+.93	+54	+53	+103	+.35	+57

30 SONS & GRANDSONS SELL!

Coalition's ability to sire like phenotype is uncanny. The sons he sires are consistently good hiped, expressively muscled, correct in their structure and rich in Angus breed character. More impactful than his sons will be the legacy he leaves through his daughters. With the backing of his picturesque and powerful dam, Erelite 109Z, he consistently passes on her exquisite phenotype, refined teats, and well attached udder. Our Coalition daughters are the kind to build a program around. They are herd builders, carrying unparalleled maternal strength with enough muscle, power, and phenotype to thrive across all facets of the beef industry.

B

TEHAMA TAHOE B767

BULL DOB: 09/06/2013 REG: 17817177

SITZ UPWARD 307R

TEHAMA UPWARD Y238

TEHAMA ELITE BLACKBIRD T735

S A V FINAL ANSWER 0035

TEHAMA MARY BLACKBIRD Y684

TEHAMA MARY BLACKBIRD T073

CONNEALY ONWARD
SITZ HENRIETTA PRIDE 81M
TEHAMA GRIDMAKER L234
TEHAMA ELITE BLACKBIRD K592
SITZ TRAVELER 8180
S A V EMULOUS 8145
G A R RETAIL PRODUCT
TEHAMA MARY BLACKBIRD R704



CED	BW	WW	MILK	YW	SC	\$M	\$W	\$F	MARB	RE
+10	+0	+78	+33	+134	+1.21	+92	+108	+91	+.89	+.96

13 SONS SELL!

The epitome of balance this widely used Select Sires bull is a proven calving ease sire with explosive growth who also excels for maternal value and outstanding carcass merit. Tahoe combines a progeny birth ratio of 100 with a progeny weaning and yearling ratios of 102 along with were progeny IMF and Ribeye ratios of 103 and 102 respectively. In addition his daughters post collective progeny weaning ratios of 102.

REFERENCE SIRES

C S WRANGLER 830

BULL DOB: 02/25/2018 REG: 19198304
 CONNEALY CONSENSUS 7229
 HF MISS BLACKCAP 27R
 YOUNG DALE XCLUSIVE 25X
 U-2 ERELITE 1X
 S CHISUM 6175
 S PRIDE ANNA 709
 S CHISUM 6175
 S ERICA 1565

HF SYNDICATE 213Z
U-2 COALITION 206C
 U2 ERELITE 109Z
 S WHITLOCK 179
S ERICA 6196
 S ERICA 3441



CED	BW	WW	MILK	YW	SC	\$M	\$W	\$F	MARB	RE
+11	-.4	+74	+24	+128	+.34	+81	+80	+102	+.36	+.80

S Wrangler 830 is a calving ease Coalition son with a dominating phenotypic presence and a pedigree stacked with performance and maternal patriarchs. Wrangler's dam is double bred to the popular Genex sire, Chisum, who consistently sires muscle, mass and power, while enhancing maternal production. Wrangler was retained from his calf crop by Spickler South, and an interest was later sold to M Diamond Angus, WY. He has been used successfully on a large number of both registered and commercial heifers. Wrangler himself is a very good structured, exceptionally quiet bull, with a poise and presence about himself that further separates him as an elite herd bull. He is seeing heavy use at both M Diamond and Spickler South. The consistency and quality he sired in his first calf crop has him marked early as an elite producing sire. Leased to Beef 360. **7 SONS SELL!**

D LISCO GRAND FINALE 4103

BULL DOB: 02/03/2014 REG: 18051615
 SITZ TRAVELER 8180
 S A V EMULOUS 8145
 BALDRIDGE NEBRASKA 901
 LA SHOSHONE LASS 210
 O C C EMBLAZON 854E
 REDLAND HENRIETTA PRIDE 1812
 BALDRIDGE NEBRASKA 901
 LA LASS 407

S A V FINAL ANSWER 0035
LISCO FINALE 902
 LA SHOSHONE LASS 4101
 REDLAND EMBLAZON 2134
LISCO LASS 201
 LISCO LASS 812

What can you say about Grand Finale! He did it the old fashioned way, he earned it. He was the high selling bull in our 2015 sale at \$13000.00. Produced from a perfect pathfinder dam, Finale has the highest 205 day weight ever at Lisco Angus at 835#. Females in production have perfect well balanced udders, and the bulls are phenotypic standouts and will push down the scale. He is the complete package. **8 SONS SELL!**

CED	BW	WW	MILK	YW	SC	\$M	\$W	\$F	MARB	RE
+10	-.2	+90	+24	+155	+.85	+77	+88	+112	+.74	+.64

E K G JUSTIFIED 3023

BULL DOB: 1/21/2013 REG: 17707279
 CONNEALY CONSENSUS 7229
 BLUE LILLY OF CONANGA 16
 RITO 6EMA OF 4L3 EMBLAZON
 ENTRANCE OF CONANGA 206
 CONNEALY ONWARD
 SITZ ELLUNA ELITE 94P
 KG TRAVELER 8180 8171
 KG MISS MAGIC 6560

CONNEALY JUDGMENT
 ENTRINE OF CONANGA 9876
 SITZ WISDOM 481T
KG MISS MAGIC 1443
 KG MISS MAGIC 3528



CED	BW	WW	MILK	YW	SC	\$M	\$W	\$F	MARB	RE
+11	-.2	+61	+30	*198	+17	+99	+88	+71	+1.06	+.29

A Widely used Select Sires bull who features an outstanding combination of proven calving ease and an excellent EPD profile. The daughters are tidy uddered with a lot of spring of rib. His sons are very consistent. Easy calving, moderate framed, with excellent thickness, and very good feet and legs. **10 SONS SELL!**

REFERENCE SIRES

F M DIAMOND BUSINESSMAN 727

BULL DOB: 03/02/2017 REG: 19054953

S A V FINAL ANSWER 0035

CONNEALY CAPITALIST 028

PRIDES PITA OF CONANGA 8821

GDAR GAME DAY 449

S GLORIA 1194

S GLORIA 464

SITZ TRAVELER 8180

S A V EMULOUS 8145

C R A BEXTOR 872 5205 608

PRIDES TRAV OF CONANGA 6499

BOYD NEW DAY 8005

G D A R MISS WIX 474

S ECLIPSE 169

S GLORIA 209



CED	BW	WW	MILK	YW	SC	\$M	\$W	\$F	MARB	RE
+16	-.2	+76	+23	+132	+.34	+101	+86	+107	+.32	+.64

Businessman progeny have proven to come small and show explosive growth to weaning. They are deep, thick and wide with exceptional structural integrity. His first females will calve for us this spring and appear to be the kind with the "Drive to Thrive" in our environment. His calves at M Diamond post progeny birth ratio of 97 combined with progeny weaning ratio of 104. **6 SONS SELL!**

G S CORNERSTONE 607

BULL DOB: 02/12/2016 REG: 18601521

S CHISUM 6175

S WHITLOCK 179

S PRIDE ANNA 709

SHIPWHEEL CHINOOK

S BLOSSOM 0278

S BLOSSOM 8378

S ALLIANCE 3313

S GLORIA 464

R&S EXPEDITION 1404

S PRIDE ANNA 567

H A IMAGE MAKER 0415

APEX ERISKAY 5506

R&S EXPEDITION 1404

S BLOSSOM 4190



CED	BW	WW	MILK	YW	SC	\$M	\$W	\$F	MARB	RE
+5	+.9	+72	+33	+121	+1.2	+84	+86	+93	-.09	+.44

Cornerstone was the high selling bull at the 2017 Spickler Ranch South sale. He presents a phenotypic, performance and maternal package that is second to none. His dam, S Blossom 0278, is a tremendous cow that will continue to leave her mark on the Angus breed for years to come. His 3-generation pedigree is composed of 12 pathfinders. His progeny ratios are as follows birth 99, weaning and yearling 101. 60 daughters in 8 herds show a combined weaning ratio of 102 on 80 calves. **16 SONS & GRANDSONS SELL!**

H U2 BOARDWALK 407G

BULL DOB: 02/05/2019 REG: 19843490

COLEMAN CHARLO 0256

COLEMAN BRAVO 6313

COLEMAN DONNA 714

YOUNG DALE XCLUSIVE 25X

U-2 MS MORRISON 259Z

U-2 MS MORRISON 134X

O C C PAXTON 730P

BOHI ABIGALE 6014

CONNEALY ONWARD

COLEMAN DONNA 386 AMF

YOUNG DALE KNOCK OUT 134U

YOUNG DALE POLLYANNA 60T

S A V FINAL ANSWER 0035

U-2 MS MORRISON 8003U



CED	BW	WW	MILK	YW	SC	\$M	\$W	\$F	MARB	RE
+1	+3	+66	+23	+127	+1.27	+56	+59	+104	+.19	+.72

Boardwalk is a powerful individual with tremendous capacity and thickness along with a impeccable structure. The maternal greatness in his pedigree are second to none. His dam had high selling bull at U2's 2021 bull sale. He stamped his first calves with a phenotype that is proven to excel in our tough range conditions here in eastern Wyoming. **4 SONS SELL!**

REFERENCE SIRES

MARCYS SCALE BREAKER N PLUS

BULL DOB: 02/10/2015 REG: 18219249

SITZ UPWARD 307R

MARCYS SCALE CRUSHER

MARCYS ERICA 393

REDLAND EMBLAZON 2021

MARCYS TREASURE 227

MARCYS TREASURE 947

CONNEALY ONWARD
SITZ HENRIETTA PRIDE 81M
LEACHMAN RIGHT TIME
G MARCY ERICA 118
O C C EMBLAZON 854E
REDLAND BLACKCAP 1289
SITZ ALLIANCE 6595
MARCYS TREASURE 496



CED	BW	WW	MILK	YW	SC	\$M	\$W	\$F	MARB	RE
+7	+1.6	+71	+13	+121	+55	+29	+56	+108	+34	+80

Scale Breaker N Plus sires deep soggy cattle that are a load. He excels in deep ribbed, easy fleshing cattle that are long, stout & full of muscle. With live kill data, he is a high marbling sire that shows his steers fitting the criteria for CAB. Expect his progeny to hold up in tough country with extra do ability. His pathfinder dam is an ET donor with M Diamond Angus. She is deep-ribbed and very easy fleshing. She AI bred every year and Scale Breaker N Plus daughters are doing an outstanding job.

BOWMAN UPROAR 608

BULL DOB: 01/09/2016 REG: 18879537

SITZ UPWARD 307R

BRUIN UPROAR 0070

FALCON BLACKBIRD 6071

S CHISUM 6175

BOWMAN ZUNI B53XY69

BOWMAN ZUNI Y69 X P23

CONNEALY ONWARD
SITZ HENRIETTA PRIDE 81M
CONNEALY DATELINE
VERMILION BLACKBIRD 5044
S ALLIANCE 3313
S GLORIA 464
BOWMAN EXXON 1U
BOWMANS ZUNI LASS P23

Uproar continues to provide us with calving ease along with adequate growth in his progeny. His first daughters are doing a good job for us.

CED	BW	WW	MILK	YW	SC	\$M	\$W	\$F	MARB	RE
+7	+4	+63	+34	+121	+1.48	+68	+75	+111	+19	+52



2 - YEAR - OLD BULLS

1 LISCO 536 CEDAR RIDGE 0041

DOB: 04/08/20 REG: 19965670 TAT: 0041

Cole Creek Cedar Ridge 1V

Marcys Cedar Ridge 536

Marcys Erica 864

Cole Creek Cedar Ridge 1V

Lisco Erica 4108

Lisco Erica 205

Cole Creek Black Cedar 46P

Cole Creek Clovanada 49S

Baldrige Kaboom K243 KCF

Marcys Erica 629

Cole Creek Black Cedar 46P

Cole Creek Clovanada 49S

Big Rok Ole 450

LA Erica 230

SALE DAY DATA

SALE WT	
SC	
PAP	45

BW	205 WT	IND	CED	BW	WW	MILK	YW	MARB	RE
75	696	EPDs	10	-0.1	58	29	104	3.65	13.4

Calving Ease: **

Dam's Production: 5@103

A well made complete two star calving ease 536 son. Deep and stout with a moderate frame.



LOT 1

2 LISCO CORNERSTONE 005

DOB: 02/15/20 REG: 19965634 TAT: 005

S Whitlock 179

S Cornerstone 607

S Blossom 0278

Lisco No Question 802

Lisco Lass 411

Lisco Lass 6104

S Chisum 6175

S Pride Anna 709

Shipwheel Chinook

S Blossom 8378

S A V Final Answer 0035

LA Lass 419

Baldrige Nebraska 901

LA Lass 421

SALE DAY DATA

SALE WT	
SC	
PAP	38

BW	205 WT	IND	CED	BW	WW	MILK	YW	MARB	RE
74	665	EPDs	9	-0.3	65	27	111	4.35	10.8

Calving Ease: **

Dam's Production: 6@101

A bigger frame, powerful Cornerstone. Balanced in his type, should work on heifers. High IMF ratio.



LOT 2

3 LISCO F333 RENOWN 091

DOB: 02/27/20 REG: 19970641 TAT: 091

S A V Renown 3439

Pine Coulee Renown F333

SCR Everelda Entense 852

Connealy Capitalist 028

Lisco Ethelda 762

Lisco Ethelda 816

Rito 707 of Ideal 3407 7075

S A V Blackcap May 4136

Sitz Alliance 6595

BT Everelda Entense 613L

S A V Final Answer 0035

Prides Pita of Conanga 8821

Baldrige Nebraska 901

L A Ethelda 819 G N

SALE DAY DATA

SALE WT	
SC	
PAP	44

BW	205 WT	IND	CED	BW	WW	MILK	YW	MARB	RE
80	616	EPDs	4	1.5	59	21	108	4.61	10.4

Calving Ease:

Dam's Production: 3@98

A stout made deep ribbed moderate framed PC Renown son. Stands out on all the corners. Highest IMF of the 2 year olds.



LOT 3

2 - YEAR - OLD BULLS

4 LISCO 316 CAPITALIST 088

DOB: 02/27/20 REG: 19965656 TAT: 088

Connealy Capitalist 028

LD Capitalist 316

LD Dixie Erica 2053

Redland Emblazon 2134

Lisco Sasquatch 368

LA Sasquatch 528

S A V Final Answer 0035
Prides Pita of Conanga 8821
C A Future Direction 5321
LD Dixie Erica Oar 0853
O C C Emblazon 854E
Redland Henrietta Pride 1812
Sitz Alliance 6595
L A Sasquatch 630 M

SALE DAY DATA

SALE WT	
SC	
PAP	39

BW	205 WT	IND	CED	BW	WW	MILK	YW	MARB	RE
78	580	EPDs	8	0.8	54	24	98	2.74	11

Calving Ease: *

Dam's Production: 5@99

A well balanced smooth made 316 son that should work on larger heifers.



LOT 4

5 LISCO CORNERSTONE 0026

DOB: 03/24/20 REG: 19965665 TAT: 0026

S Whitlock 179

S Cornerstone 607

S Blossom 0278

Cole Creek Cedar Ridge 1V

Lisco Miss Baros 5112

Lisco Miss Baros 331

S Chisum 6175
S Pride Anna 709
Shipwheel Chinook
S Blossom 8378
Cole Creek Black Cedar 46P
Cole Creek Clovanada 49S
Lisco Finale 902
LA Miss Baros 564

SALE DAY DATA

SALE WT	
SC	
PAP	44

BW	205 WT	IND	CED	BW	WW	MILK	YW	MARB	RE
82	736	EPDs	4	1.7	74	28	123	3.07	12.4

Calving Ease:

Dam's Production: 5@101

A powerful Cornerstone, a ton of rib and muscle in a larger frame. A stout cow bull here.

6 LISCO 536 CEDAR RIDGE 0043

DOB: 04/12/20 REG: 19965671 TAT: 0043

Cole Creek Cedar Ridge 1V

Marcys Cedar Ridge 536

Marcys Erica 864

Thomas Up River 1614

Lisco Girl 437

Lisco Girl 9102

Cole Creek Black Cedar 46P
Cole Creek Clovanada 49S
Baldrige Kaboom K243 KCF
Marcys Erica 629
Sitz Upward 307R
Thomas Carol 7595
S A V Final Answer 0035
Lisco Girl 721

SALE DAY DATA

SALE WT	
SC	
PAP	39

BW	205 WT	IND	CED	BW	WW	MILK	YW	MARB	RE
78	726	EPDs	9	0.6	65	28	112	3.24	12.2

Calving Ease: **

Dam's Production: 5@106

A deep middled easy fleshing 536 that stands out on the corners. Put these two 536 sons to work on a set of heifers.

7 LISCO 4604 SUMMIT 081

DOB: 02/25/20 REG: 19965655 TAT: 081

S Summit 956

S Summit 4604

S Lass 8245

Big Rok Ole 450

Lisco Bardella 237

Lisco Bardella 629

GDAR Game Day 449
S Pride Anna 709
S Chisum 6175
S Lass 627
G D A R Traveler 044
Big Rok Heather Lass 152
G A R Integrity
LA Bardella 121

SALE DAY DATA

SALE WT	
SC	
PAP	45

BW	205 WT	IND	CED	BW	WW	MILK	YW	MARB	RE
88	627	EPDs	4	2.5	55	29	102	3.5	10.2

Calving Ease:

Dam's Production: 6@108

A stout made beef bull here out of the Beef 360 Sire S Summit 4604. Strong maternal package.



LOT 7

2 - YEAR - OLD BULLS

8

LISCO CORNERSTONE 0108

DOB: 01/27/20 REG: 19967268 TAT: 0108

S Whitlock 179
S Cornerstone 607
 S Blossom 0278

S Chisum 255
Lisco Girl 8105
 Lisco Girl 639

S Chisum 6175
 S Pride Anna 709
 Shipwheel Chinook
 S Blossom 8378
 S Chisum 6175
 S Blossom 0278
 Cole Creek Cedar Ridge 1V
 Lisco Girl 335

SALE DAY DATA

SALE WT	
SC	
PAP	50+

BW	205 WT	IND	CED	BW	WW	MILK	YW	MARB	RE
73	656	EPDs	7	0.8	69	30	113	3.02	11.8

Calving Ease: **

Dam's Production: 2@106

A powerfully made Cornerstone. Long hiped and loaded with muscle.

9

LISCO CORNERSTONE 0012

DOB: 03/15/20 REG: 19965662 TAT: 0012

S Whitlock 179
S Cornerstone 607
 S Blossom 0278

Sitz 4 Aces 4551
Lisco Blueblood Lady 708
 LA Blueblood Lady 566

S Chisum 6175
 S Pride Anna 709
 Shipwheel Chinook
 S Blossom 8378
 Jauer 353 Traveler 589 27
 Sitz Pride 2561
 Moore Forefront 717
 LA Blueblood Lady 201

SALE DAY DATA

SALE WT	
SC	
PAP	37

BW	205 WT	IND	CED	BW	WW	MILK	YW	MARB	RE
83	648	EPDs	1	2.3	67	28	112	2.22	13

Calving Ease:

Dam's Production: 3@102

A beef bull here, deep ribbed with a big top. Cornerstone daughters in production are doing a great job.

10

LISCO JUSTIFIED 076

DOB: 02/25/20 REG: 19967172 TAT: 076

Connealy Judgment
KG Justified 3023
 KG Miss Magic 1443

Thomas Up River 1614
Lisco Girl 452
 Lisco Girl 721

Connealy Consensus 7229
 Entrine of Conanga 9876
 Sitz Wisdom 481T
 KG Miss Magic 3528
 Sitz Upward 307R
 Thomas Carol 7595
 Sitz Alliance 6595
 LA Girl 353

SALE DAY DATA

SALE WT	
SC	
PAP	44

BW	205 WT	IND	CED	BW	WW	MILK	YW	MARB	RE
78	575	EPDs	9	-0.7	50	30	91	4.6	11

Calving Ease: **

Dam's Production: 4@99

A moderate frame smooth made Justified with a ton of rib. A two star calving ease with a high IMF ratio.



LOT 10

11

LISCO CORNERSTONE 0044

DOB: 04/14/20 REG: 19965672 TAT: 0044

S Whitlock 179
S Cornerstone 607
 S Blossom 0278

Redland Emblazon 2134
Lisco Wrangler 247
 Lisco Wrangler 6103

S Chisum 6175
 S Pride Anna 709
 Shipwheel Chinook
 S Blossom 8378
 O C C Emblazon 854E
 Redland Henrietta Pride 1812
 Sitz Alliance 6595
 LA Wrangler 4107

SALE DAY DATA

SALE WT	
SC	
PAP	50+

BW	205 WT	IND	CED	BW	WW	MILK	YW	MARB	RE
82	734	EPDs	4	2.2	67	33	115	3.56	11.9

Calving Ease:

Dam's Production: 6@108

A complete made, deep ribbed Cornerstone with a big top. Power bull.

2022 GROW SAFE

SUMMER BULLS: This is the second year for M Diamond to offer these 20 month old bulls. Our June calving herd is run as a completely separate herd from the spring calving herd. All 16 of these bulls are from our Embryo Transfer program. 11 of these bulls are maternal brothers out of the great Marcys 13 Ethelda E 15-3. Top end genetics here with the convenience offered by older bulls.

WHY FEED EFFICIENCY DATA? At M Diamond Angus we believe the most economically relevant trait in the beef industry is feed efficiency. Feed efficiency is described as being moderately heritable. It is expected to have a 25% to 30% chance of being passed on to the next generation. Therefore, we believe that we need to put selection pressure on this trait. By doing so we can create more feed efficient cattle. For this reason we decided that we needed to find a way to obtain feed efficiency data on the genetics that we are providing our customers.

THE FEED TEST EXPLAINED:

The summer bulls were tested using a GrowSafe testing facility for 60 days. A growing diet was fed, consisting of cracked corn, ground alfalfa hay, corn silage, and protein supplement. The ration was formulated for an estimated daily gain of 3.25 lb/day. Individual weight gain and feed intakes were collected on each bull. The following calculations were measured:

Average Daily Gain (ADG) – Total weight gain divided by 60 days.

RFI – Residual Feed Intake. RFI is the preferred method of evaluating efficiency in seedstock animals, because it is an efficiency measurement that adjusts for the size of the animal. Using traditional feed efficiency measurements (to select cattle) would cause you to indirectly select for larger animal size because larger frame animals tend to be more efficient. RFI is a feed efficiency index independent of animal size. RFI numbers refer to the comparison between actual feed intake vs. expected feed intake (based on the ration fed and animal size). A negative number is preferable, indicating a more efficient animal that consumed less feed than predicted. Positive RFI indicate a less efficient animal that consumed more feed than expected.

Feed:Gain – A measurement of feed efficiency, listed as the lbs of feed required to achieve 1 lb of weight gain for each bull. This is calculated using the daily feed intake and ADG for each bull. A lower number indicates a more efficient bull (less feed required to achieve weight gain).

SUMMER BULLS GROWSAFE TEST RESULTS:

LOT #	RANCH TAG	ADG	RFI	FEED TO 1 LB. OF GAIN	TEST RANK
12	2100	5.167	0.89	6.73	6
13	70-0	4.167	-1.31	7.73	7
14	2140	3.083	-3.11	9.49	11
15	2050	5.083	-2.01	5.94	1
16	68-0	5	4.96	7.72	7
17	73-0	3.417	0.31	9.7	14
18	81-0	3.083	4.04	11.61	16
19	2030	4.583	3.87	7.78	10
20	69-0	4.667	-3.29	6.35	2
21	79-0	4.333	2.63	7.98	13
22	2070	4.417	-3.23	6.32	3
23	76-0	4.583	-2.76	6.5	4
24	2080	3	-1.33	10.07	15
25	67-0	3.5	3.87	7.78	12
26	2090	3.833	-1.36	7.93	7
27	78-0	4.917	-0.47	6.34	5

SUMMER BULLS

MARCYS 13 ETHELDA E 15-3



Marcys 13 Ethelda E 15-3 was selected as the top selling cow of the 2017 Marcy Female Sale and has since went on to prove herself as an elite cow. Garnering over \$150,000 in progeny sales she records a progeny weaning ratio of 105 on four natural calves along with progeny IMF and ribeye ratios of 106 and 104, respectively, on 15 head with 14 daughters in production who post a collective progeny weaning ratio of 103. 15-3 is a powerful female with a ton of performance and end product value. She has proven to be the type of cow that you want to build a herd around.

She is still being used very heavily in the M Diamond Angus embryo program. She is proving to produce very attractive cattle with lots of rib, a long hip, and plenty of muscle while being exceptional for both IMF and ribeye area. However, the best part of 15-3 are the females in production. They are feminine, functional, clean fronted individuals with a ton of capacity and exceptional udder quality. They flat out produce as is reflected by their collective progeny weaning ratio of 103. Son's of 15-3 sell as Lots 12, 13, 14, 16, 17, 18, 20, 21, 24, 25, 26 and 68.

12 M DIAMOND RECHARGE 2100

DOB: 06/07/20 REG: 20268258 TAT: 2100

Rito 707 of Ideal 3407 7075

R R Rito 707
Ideal 3407 of 1418 076

S A V Recharge 3436

S A V Blackcap May 4136

S A V 8180 Traveler 004
S A V May 2397

Sitz Upward 307R

Connealy Onward
Sitz Henrietta Pride 81M

Marcys 13 Ethelda E 15-3

Marcys 01 Ethelda E 82-1

Marcys Traveler 1148 132-9
Marcys 99 Ethelda E 929

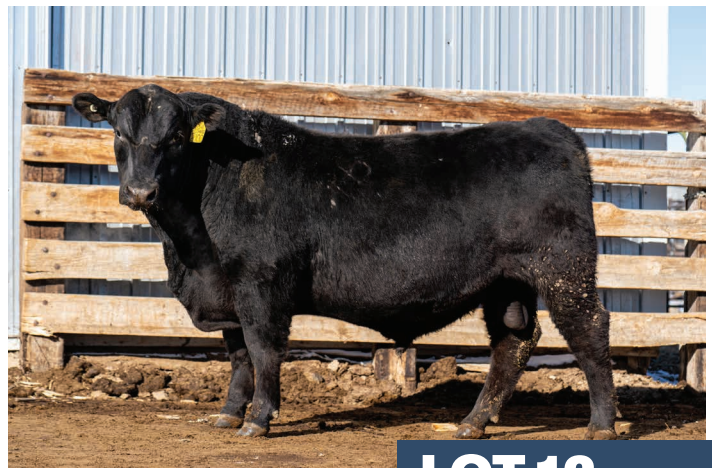
SALE DAY DATA

SALE WT	
SC	

BW	205 WT	IND	CED	BW	WW	MILK	YW	MARB	RE
ET-85	ET-655	EPDs	3	2.9	66	24	118		

Calving Ease:

Dam's Production: 4@105



LOT 12

This flush by Recharge has far exceeded our expectations. We think high enough of this set of bulls that we are going to use these bloodlines back in our program. These bulls are thick and deep with a ton of muscle in a structurally correct package. We think that the females out of this set of bulls will be second to none and look forward to what the future holds. Here is an opportunity to tie into some of the best genetics M Diamond Angus has offered. Recharge is a full brother to Resource and Renown and in our opinion is possibly the best bull of the flush. He is an extremely long made bull with plenty of muscle, rib, and capacity. His structure is as good as any bull we have laid eyes on and he moves extremely well. Flush brothers sell as Lots 13, 16, 17, 18.

SUMMER BULLS

13 M DIAMOND 20 RECHARGE 70-0

DOB: 06/04/20 REG: 19942262 TAT: 700

Rito 707 of Ideal 3407 7075

S A V Recharge 3436

S A V Blackcap May 4136

Sitz Upward 307R

Marcys 13 Ethelda E 15-3

Marcys 01 Ethelda E 82-1

R R Rito 707
Ideal 3407 of 1418 076

S A V 8180 Traveler 004

S A V May 2397

Connealy Onward

Sitz Henrietta Pride 81M

Marcys Traveler 1148 132-9

Marcys 99 Ethelda E 929

SALE DAY DATA

SALE	
WT	
SC	

BW	205 WT	IND	CED	BW	WW	MILK	YW	MARB	RE
ET-679		EPDs	3	2.9	66	24	118	3.61	11.8

Calving Ease:

Dam's Production: 4@105

Flush brothers sell as Lots 12, 16, 17 and 18.



LOT 13

14 M DIAMOND CAP 316 2140

DOB: 06/09/20 REG: 20268562 TAT: 2140

Connealy Capitalist 028

LD Capitalist 316

LD Dixie Erica 2053

Sitz Upward 307R

Marcys 13 Ethelda E 15-3

Marcys 01 Ethelda E 82-1

S A V Final Answer 0035
Prides Pita of Conanga 8821

C A Future Direction 5321

LD Dixie Erica Oar 0853

Connealy Onward

Sitz Henrietta Pride 81M

Marcys Traveler 1148 132-9

Marcys 99 Ethelda E 929

SALE DAY DATA

SALE	
WT	
SC	

BW	205 WT	IND	CED	BW	WW	MILK	YW	MARB	RE
ET-78	ET-585	EPDs	8	1.3	67	30	114	4.49	12.1

Calving Ease: *

Dam's Production: 4@105

These Capitalist 316 by 15-3 flush brothers will leave behind females that you will wish you had more of. These flush brothers are extremely attractive bulls with a ton of rib and a long and square hip. The heifer mates to these bulls have been in the top end of the replacement pen. The carcass data that has been coming back on the progeny of this mating has been exceptional and these bulls can be expected to improve end product value. Flush brothers sell as Lots 24, 25, 26 and 68.



LOT 14

15 M DIAMOND COALITION 2050

DOB: 06/05/20 REG: 20268390 TAT: 2050

HF Syndicate 213Z

U-2 Coalition 206C

U2 Erelite 109Z

LD Capitalist 316

Musgrave Barbara Lass 1416

Musgrave Barbara Lass 273

Connealy Consensus 7229

HF Miss Blackcap 27R

Young Dale Xclusive 25X

U-2 Erelite 1X

Connealy Capitalist 028

LD Dixie Erica 2053

Musgrave Boulder

MCATL Barbara Lass 931-719

SALE DAY DATA

SALE	
WT	
SC	

BW	205 WT	IND	CED	BW	WW	MILK	YW	MARB	RE
ET-70	ET-535	EPDs	12	-0.3	63	34	119	3.92	11

Calving Ease: **

Dam's Production: 3@102

This Coalition son was purchased as an embryo from the well known Musgrave program in Illinois. The dam of this bull is sired by LD Capitalist 316 and is a maternal sister to ABS sire Musgrave Mediator. Her Pathfinder dam by Boulder holds a NR of 3@109 and stems from one of the most productive cow lines at Musgrave Angus. Her combination of phenotype, maternal strengths, and EPD tabulation has earned her donor status.



LOT 15

SUMMER BULLS

16 M DIAMOND 20 RECHARGE 68-0

DOB: 06/05/20 REG: 19942254 TAT: 680

Rito 707 of Ideal 3407 7075
Ideal 3407 of 1418 076

S A V Recharge 3436

S A V Blackcap May 4136

Sitz Upward 307R

Marcys 13 Ethelda E 15-3

Marcys 01 Ethelda E 82-1

R R Rito 707
S A V 8180 Traveler 004
S A V May 2397

Connealy Onward
Sitz Henrietta Pride 81M

Marcys Traveler 1148 132-9
Marcys 99 Ethelda E 929

SALE DAY DATA

SALE WT	
SC	

BW	205 WT	IND	CED	BW	WW	MILK	YW	MARB	RE
ET-730	EPDs	3	2.9	66	24	118	3.22	12.2	

Calving Ease:

Dam's Production: 4@105

Flush brothers sell as Lots 12, 13, 17 and 18.

17 M DIAMOND 20 RECHARGE 73-0

DOB: 06/05/20 REG: 19942270 TAT: 730

Rito 707 of Ideal 3407 7075
Ideal 3407 of 1418 076

S A V Recharge 3436

S A V Blackcap May 4136

Sitz Upward 307R

Marcys 13 Ethelda E 15-3

Marcys 01 Ethelda E 82-1

R R Rito 707
S A V 8180 Traveler 004
S A V May 2397

Connealy Onward
Sitz Henrietta Pride 81M

Marcys Traveler 1148 132-9
Marcys 99 Ethelda E 929

SALE DAY DATA

SALE WT	
SC	

BW	205 WT	IND	CED	BW	WW	MILK	YW	MARB	RE
ET-668	EPDs	3	2.9	66	24	118	4.06	11.3	

Calving Ease:

Dam's Production: 4@105

Flush brothers sell as Lots 12, 13, 16 and 18.

18 M DIAMOND 20 RECHARGE 81-0

DOB: 06/12/20 REG: 19942315 TAT: 810

Rito 707 of Ideal 3407 7075
Ideal 3407 of 1418 076

S A V Recharge 3436

S A V Blackcap May 4136

Sitz Upward 307R

Marcys 13 Ethelda E 15-3

Marcys 01 Ethelda E 82-1

R R Rito 707
S A V 8180 Traveler 004
S A V May 2397

Connealy Onward
Sitz Henrietta Pride 81M

Marcys Traveler 1148 132-9
Marcys 99 Ethelda E 929

SALE DAY DATA

SALE WT	
SC	

BW	205 WT	IND	CED	BW	WW	MILK	YW	MARB	RE
ET-670	EPDs	3	2.9	66	24	118	2.99	12.1	

Calving Ease:

Dam's Production: 4@105

Flush brothers sell as Lots 12, 13, 16, and 17

19 M DIAMOND RENOWN 2030

DOB: 06/03/20 REG: 20275133 TAT: 2030

Rito 707 of Ideal 3407 7075
Ideal 3407 of 1418 076

S A V Renown 3439

S A V Blackcap May 4136

Sitz Alliance 6595

SCR Everelda Entense 852

BT Everelda Entense 613L

S A V 8180 Traveler 004
S A V May 2397

Sitz Traveler 8180
Sitz Barbaramere Jet 269H

Sitz Traveler 6802
BT Everelda Entense 567H

SALE DAY DATA

SALE WT	
SC	

BW	205 WT	IND	CED	BW	WW	MILK	YW	MARB	RE
ET-92	ET-599	EPDs	0	3.3	62	25	111	3.09	10.9

Calving Ease:

Dam's Production: 5@104

A thick made Renown son that came from embryos purchased from Pine Coulee Angus in Montana. This bulls dam is a beautiful daughter of Sitz Alliance 6595 who boast a weaning ratio of 5 calves at 104. Lisco Angus purchased a full brother to this bull as their pick out of the 2019 Pine Coulee sale.



MUSGRAVE BARBARA LASS 1416 DAM TO LOT 15



SCR EVERELDA ENTENSE 852 DAM TO LOT 19

SUMMER BULLS

20 M DIAMOND 20 LOGO 69-0

DOB: 06/06/20 REG: 19945278 TAT: 690

Sitz Tebow 11860

SITZ Logo 12964

SITZ Shauna 3152

Sitz Upward 307R

Marcys 13 Ethelda E 15-3

Marcys 01 Ethelda E 82-1

Sitz New Design 458N
Sitz Emma E 2738

Sitz Game Day 9470
Sitz Shauna 1590

Connealy Onward
Sitz Henrietta Pride 81M

Marcys Traveler 1148 132-9
Marcys 99 Ethelda E 929

SALE DAY DATA

SALE	WT	
SC		

BW	205 WT	IND	CED	BW	WW	MILK	YW	MARB	RE
ET-665	EPDs	10	0.4	69	27	112	4.18	11.9	

Calving Ease: **

Dam's Production: 4@105

This pair of bulls by the popular Sitz Logo 12964 are extremely soft made bulls that have the maternal look to them. Just like their sire these bulls will be known for the females that they produce. These bulls will put together a set of females with longevity that are easy fleshing, problem free, and raise a big calf year in and out. Flush brother sells as Lot 21.

21 M DIAMOND 20 LOGO 79-0

DOB: 06/10/20 REG: 19945280 TAT: 790

Sitz Tebow 11860

SITZ Logo 12964

SITZ Shauna 3152

Sitz Upward 307R

Marcys 13 Ethelda E 15-3

Marcys 01 Ethelda E 82-1

Sitz New Design 458N
Sitz Emma E 2738

Sitz Game Day 9470
Sitz Shauna 1590

Connealy Onward
Sitz Henrietta Pride 81M

Marcys Traveler 1148 132-9
Marcys 99 Ethelda E 929

SALE DAY DATA

SALE	WT	
SC		

BW	205 WT	IND	CED	BW	WW	MILK	YW	MARB	RE
ET-716	EPDs	10	0.4	68	27	111	4.07	11.5	

Calving Ease: **

Dam's Production: 4@105

Flush brother sell as Lot 20.

22 M DIAMOND BANK NOTE 2070

DOB: 06/05/20 REG: 20268306 TAT: 2070

Connealy Earnan 076E

Brooking Bank Note 4040

E A Rose 918

Leachman Right Time

Coleman Dixie Erica 8273

Coleman Dixie Erica 143

Connealy Consensus
Brazila of Conanga 3991 839A

S A V Final Answer 0035
E A Rose 738

N Bar Emulation EXT
Leachman Erica 0025

D H D Traveler 6807
Dixie Erica of R R 6203

SALE DAY DATA

SALE	WT	
SC		

BW	205 WT	IND	CED	BW	WW	MILK	YW	MARB	RE
ET-85	ET-591	EPDs	4	1.4	57	21	94	3.78	12.1

Calving Ease:

Dam's Production: 5@102

These two Bank Note sons have a little more scale to them and are very long made bulls. They had exceptional performance to weaning and will sire a set of calves that really smash down the scales at weaning time. Flush brother sells as Lot 23

23 M DIAMOND 20 BANK NOTE 76-0

DOB: 06/07/20 REG: 19942359 TAT: 760

Connealy Earnan 076E

Brooking Bank Note 4040

E A Rose 918

Leachman Right Time

Coleman Dixie Erica 8273

Coleman Dixie Erica 143

Connealy Consensus
Brazila of Conanga 3991 839A

S A V Final Answer 0035
E A Rose 738

N Bar Emulation EXT
Leachman Erica 0025

D H D Traveler 6807
Dixie Erica of R R 6203

SALE DAY DATA

SALE	WT	
SC		

BW	205 WT	IND	CED	BW	WW	MILK	YW	MARB	RE
ET-766	EPDs	4	1.9	57	21	94	3.52	11.3	

Calving Ease:

Dam's Production: 5@102

Flush brother sells as Lot 22.



COLEMAN DIXIE ERICA 8273 DAM TO LOT 22 & 23

SUMMER BULLS

24 M DIAMOND CAP 316 2080

DOB: 06/06/20 REG: 20268556 TAT: 2080

Connealy Capitalist 028

LD Capitalist 316

LD Dixie Erica 2053

Sitz Upward 307R

Marcys 13 Ethelda E 15-3

Marcys 01 Ethelda E 82-1

S A V Final Answer 0035
Prides Pita of Conanga 8821

C A Future Direction 5321
LD Dixie Erica Oar 0853

Connealy Onward

Sitz Henrietta Pride 81M

Marcys Traveler 1148 132-9
Marcys 99 Ethelda E 929

SALE DAY DATA	
SALE WT	
SC	

BW	205 WT	IND	CED	BW	WW	MILK	YW	MARB	RE
ET-85	ET-529	EPDs	8	1.3	67	30	114	3.82	12.1

Calving Ease: *

Dam's Production: 4@105

Flush brothers sell as Lots 14, 25, 26 and 68. See Lot 14 for comments

25 M DIAMOND 20 CAP 316 67-0

DOB: 06/05/20 REG: 19929335 TAT: 670

Connealy Capitalist 028

LD Capitalist 316

LD Dixie Erica 2053

Sitz Upward 307R

Marcys 13 Ethelda E 15-3

Marcys 01 Ethelda E 82-1

S A V Final Answer 0035
Prides Pita of Conanga 8821

C A Future Direction 5321
LD Dixie Erica Oar 0853

Connealy Onward

Sitz Henrietta Pride 81M

Marcys Traveler 1148 132-9
Marcys 99 Ethelda E 929

SALE DAY DATA	
SALE WT	
SC	

BW	205 WT	IND	CED	BW	WW	MILK	YW	MARB	RE
ET-614	EPDs	8	1.3	67	30	114	3.91	10.8	

Calving Ease: *

Dam's Production: 4@105

Flush brothers sell as Lots 14, 24, 26 and 68. See Lot 14 for comments.

26 M DIAMOND CAP 316 2090

DOB: 06/06/20 REG: 20268559 TAT: 2090

Connealy Capitalist 028

LD Capitalist 316

LD Dixie Erica 2053

Sitz Upward 307R

Marcys 13 Ethelda E 15-3

Marcys 01 Ethelda E 82-1

S A V Final Answer 0035
Prides Pita of Conanga 8821

C A Future Direction 5321
LD Dixie Erica Oar 0853

Connealy Onward

Sitz Henrietta Pride 81M

Marcys Traveler 1148 132-9
Marcys 99 Ethelda E 929

SALE DAY DATA	
SALE WT	
SC	

BW	205 WT	IND	CED	BW	WW	MILK	YW	MARB	RE
ET-80	ET-641	EPDs	8	1.3	67	30	114	3.52	11.5

Calving Ease: *

Dam's Production: 4@105

Flush brothers sell as Lots 14, 24, 25, and 68. See Lot 14 for comments

27 M DIAMOND CUTTING EDGE 78-0

DOB: 06/08/20 REG: 19933909 TAT: 780

S A V Harvester 0338

SA V Cutting Edge 4857

S A V Blackcap May 5530

Jauer 353 Traveler 589 27

Pine Coulee Ever Entense X64

Sitz Everelda Entense 2198

S A V Heritage 6295
S A V Emblynette 7749

B C C Bushwacker 41-93
S A V May 7238

Jauer 7111 Traveler 353 719

Jauer 6807 Traveler 27 085

N Bar Emulation EXT
Sitz Everelda Entense 1137

SALE DAY DATA	
SALE WT	
SC	

BW	205 WT	IND	CED	BW	WW	MILK	YW	MARB	RE
ET-636	EPDs	1	4.8	54	25	100	4.1	10.2	

Calving Ease:

Dam's Production: 4@100

This bull has an outcross pedigree and can be expected to produce the easy keeping kind of females who stick around the place for a while. This bulls Dam derives from the Pine Coulee cow herd and was a highlight of their donor pen for many years. She is a very well balanced cow standing on a perfect set of feet with very bold rib and beautiful front third.



PINE COULEE EVER ENTENSE X64 DAM TO LOT 27

YEARLING BULLS

U2 ERELITE 109Z

The dam of "Coalition" is a unique blend of massive power and exquisite femininity along with an udder quality and structural soundness that is beyond compare. She is touted by U2 Ranch as "the most influential cow to walk their pastures". We agree! U2 Erelite 109Z epitomizes what we envision as the "perfect" angus cow. 109Z has natural progeny weaning and yearling ratios of 4@109 and 3@113 respectively. We have been looking for this cow ever since we entered the registered Angus business 30 years ago. When the opportunity came to own her, we were determined to bring her to Wyoming thus making her the \$140,000 high seller of the historic U2 Ranch Complete Dispersion. We are offering her first ET progeny to sell at M Diamond Angus in this sale. Flush brothers by Tehama Tahoe B767 sell as Lots 28, 29, 51 and 84. Co-owned with Spickler Ranch South.



28 M DIAMOND ALCOVA 341

DOB: 02/25/21 REG: 20258272 TAT: 341

Tehama Upward Y238

Tehama Tahoe B767

Tehama Mary Blackbird Y684

Young Dale Xclusive 25X

U2 Erelite 109Z

U-2 Erelite 1X

Sitz Upward 307R
Tehama Elite Blackbird T735
S A V Final Answer 0035
Tehama Mary Blackbird T073
Young Dale Knock Out 134U
Young Dale Pollyanna 60T
S A V Final Answer 0035
U-2 Erelite 8109U

SALE DAY DATA

SALE	
WT	
SC	

BW	205 WT	IND	CED	BW	WW	MILK	YW	MARB	RE
ET-85	ET-691	EPDs	6	0.6	70	31	129	2.9	13

Calving Ease: *

Dam's Production: 4@109

A real stud! This bull has, "HERD BULL" stamped all over him. A phenotypic and performance standout that sports an exceptionally wide and long hip along with a lot of base width and capacity. He carries himself very proud like you expect from a herd bull. He moves like a cat and stands on a perfect set of feet. His dam is the great U2 Erelite 109Z, the dam of U-2 Coalition 206C. Every one of her bull calves to date is working in a registered angus herd in either Canada or the United States. She is the perfect angus cow and will continue to have a tremendous impact on our herd for years to come. His sire is the well-known Tehama Tahoe B767. Tahoe is arguably one of the most complete Angus bulls in the breed. Few sires can match his combination of Calving Ease, performance, maternal traits and carcass merit all while improving type and longevity. If you, are looking for a new herd sire you will drive the wheels off your truck looking for one better than this fella! Flush brothers sell as Lots 29, 51 and 84



LOT 28

29 M DIAMOND PATHFINDER 321

DOB: 02/26/21 REG: 20258273 TAT: 321

Tehama Upward Y238

Tehama Tahoe B767

Tehama Mary Blackbird Y684

Young Dale Xclusive 25X

U2 Erelite 109Z

U-2 Erelite 1X

Sitz Upward 307R
Tehama Elite Blackbird T735
S A V Final Answer 0035
Tehama Mary Blackbird T073
Young Dale Knock Out 134U
Young Dale Pollyanna 60T
S A V Final Answer 0035
U-2 Erelite 8109U

SALE DAY DATA

SALE	
WT	
SC	

BW	205 WT	IND	CED	BW	WW	MILK	YW	MARB	RE
ET-93	ET-740	EPDs	6	1.1	75	31	129	2.55	14.3

Calving Ease:

Dam's Production: 4@109

Like his flush brother above this bull has tons of width and length in his hip. He is long bodied and stands on a very good foot. Another performance standout that has herd bull potential. Flush brothers sell as Lots, 28, 51 and 84



LOT 29

YEARLING BULLS

30 LISCO TAHOE 183

DOB: 02/24/21 REG: 20259612 TAT: 183

Tehama Upward Y238

Tehama Tahoe B767

Tehama Mary Blackbird Y684

Marcys Trailblazer 757

Lisco Bardella 046

LA Bardella 4103

Sitz Upward 307R

Tehama Elite Blackbird T735

S A V Final Answer 0035

Tehama Mary Blackbird T073

Redland Emblazon 2021

G Marcys Erica 835

Baldrige Nebraska 901

LA Bardella 222

SALE DAY DATA

SALE	
WT	
SC	

BW	205 WT	IND	CED	BW	WW	MILK	YW	MARB	RE
88	718	EPDs	3	2.7	65	29	111	3.85	12

Calving Ease:

Dam's Production: **10@101**

A Powerful Tahoe son out of a very productive Trailblazer daughter.



LOT 30

31 M DIAMOND WRANGLER 111

DOB: 02/18/21 REG: 20258264 TAT: 111

U-2 Coalition 206C

S Wrangler 830

S Erica 6196

Lisco Grand Finale 4103

M Diamond Erica 049

M Diamond Erica 907

HF Syndicate 213Z

U2 Erelite 109Z

S Whitlock 179

S Erica 3441

Lisco Finale 902

Lisco Lass 201

Mystic Hill Balance 4134

M Diamond Erica 764

SALE DAY DATA

SALE	
WT	
SC	

BW	205 WT	IND	CED	BW	WW	MILK	YW	MARB	RE
78	741	EPDs	8	1	81	26	139	3.54	16.6

Calving Ease: *

Dam's Production: **1@115**

Have your cake and eat it too with this heavy weaning and yearling weight bull that is a real meat wagon! A potential herd bull who combines calving ease in an extremely well-muscled, wide based and deep ribbed package. He displays all the things everyone wants in a calving ease bull but seldom are able to find. As an added bonus he has the largest ribeye in our offering. His dam is a striking Grand Finale daughter that has a big future ahead of her. Should work on bigger heifers.



LOT 31



YEARLING BULLS

32 M DIAMOND 21 COALITION 155-1

DOB: 03/08/21 REG: 20249995 TAT: 1551

HF Syndicate 213Z

U-2 Coalition 206C

U2 Erelite 109Z

S Summit 956

S Clova Pride 465

S Clova Pride 0185

Connealy Consensus 7229

HF Miss Blackcap 27R

Young Dale Xclusive 25X

U-2 Erelite 1X

GDAR Game Day 449

S Pride Anna 709

S Chisum 6175

Basin Clova Pride 933L

SALE DAY DATA

SALE	
WT	
SC	

BW	205 WT	IND	CED	BW	WW	MILK	YW	MARB	RE
95	804	EPDs	4	2	77	28	138	2.74	13.9

Calving Ease:

Dam's Production: 5@107

This bull is a flat out stud! Touting an adjusted weaning weight of 804 to ratio 121 this bull has performed from Day 1. He has continued to perform and will be at the top end for yearling as well. He is loaded with muscle and does not give up structural integrity, he moves extremely well. Backed by his Pathfinder dam this bull is destined to sire exceptional females who raise the type of calves you wish you had more of.



LOT 32

33 M DIAMOND BUSINESSMAN 62-1

DOB: 02/19/21 REG: 20250001 TAT: 621

Connealy Capitalist 028

M Diamond Businessman 727

S Gloria 1194

Lisco Grand Finale 4103

M Diamond 19 Emma E 1049

M Diamond Emma E 543

S A V Final Answer 0035

Prides Pita of Conanga 8821

GDAR Game Day 449

S Gloria 464

Lisco Finale 902

Lisco Lass 201

Sitz Dash 10277

M Diamond Emma E 1170

SALE DAY DATA

SALE	
WT	
SC	

BW	205 WT	IND	CED	BW	WW	MILK	YW	MARB	RE
74	766	EPDs	13	-0.4	78	26	132	2.25	12.9

Calving Ease: **

Dam's Production: 1@116

A top notch heifer bull prospect this one puts it all together. Standing on an exceptional set of feet and legs this bull is good from the ground up. A moderate framed bull with an outstanding disposition, he is very easy to be around. If you are looking for a heifer bull that doesn't sacrifice performance here is your ticket.



LOT 33

34 M DIAMOND OPERATOR 551

DOB: 03/03/21 REG: 20258280 TAT: 551

Connealy Capitalist 028

M Diamond Businessman 727

S Gloria 1194

Mystic Hill Balance 4134

M Diamond Duchess 528

M Diamond Duchess 883

S A V Final Answer 0035

Prides Pita of Conanga 8821

GDAR Game Day 449

S Gloria 464

Tosu Mick 9301

Mystic Hill Rose 050

Redland Emblazon 2134

M Diamond Dutchess 410

SALE DAY DATA

SALE	
WT	
SC	

BW	205 WT	IND	CED	BW	WW	MILK	YW	MARB	RE
87	813	EPDs	10	1.9	83	29	142	2.59	15.3

Calving Ease:

Dam's Production: 2@113

This bull has been a standout since he was a very young calf. Exceptional thickness in his top and hindquarter. The Businessman calves will have a lot of friends, on sale day. They are the kind that will really work for our Eastern Wyoming customers. The Businessman daughters are proving to be exceptional females. Herd bull potential in this one.



YEARLING BULLS

35 M DIAMOND 21 BOARDWALK 85-1

DOB: 03/06/21 REG: 20250584 TAT: 851

Coleman Bravo 6313

U2 Boardwalk 407G

U-2 Ms Morrison 259Z

Connealy Packer 547

Marcys Erica 544

Marcys Erica 390

Coleman Charlo 0256
Coleman Donna 714

Young Dale Xclusive 25X
U-2 Ms Morrison 134X

Feltons Meat Packer 62
Bestrelle of Conanga 539

Leachman Right Time
G Marcy Erica 118

SALE DAY DATA

SALE WT	
SC	

BW	205 WT	IND	CED	BW	WW	MILK	YW	MARB	RE
98	679	EPDs	0	3.7	61	25	112	3.44	13.9

Calving Ease:

Dam's Production: 5@100

An excellent Boardwalk son that just continues to impress us more and more as time goes on. A very attractive bull that is hard to fault, he puts it all together. His dam has nearly a perfect udder so count on this bull to improve udder quality. We are very excited about our Boardwalk females and think they will be pretty special



LOT 35

36 LISCO GRAND FINALE 192

DOB: 02/26/21 REG: 20259617 TAT: 192

Lisco Finale 902

Lisco Grand Finale 4103

Lisco Lass 201

Marcys Dash 111

Lisco Eileen 377

LA Eileen 537

S A V Final Answer 0035
LA Shoshone Lass 4101

Redland Emblazon 2134
Lisco Lass 812

Sitz Dash 10277
Marcys Forever Lady 935

K C F Bennett Coalition SCC
LA Eileen 930

SALE DAY DATA

SALE WT	
SC	

BW	205 WT	IND	CED	BW	WW	MILK	YW	MARB	RE
82	779	EPDs	8	0.4	82	24	137	3.01	12.9

Calving Ease: *

Dam's Production: 5@100

A high performance Grand Finale. Should work on larger heifers.



LOT 36

37 LISCO GRAND FINALE 181

DOB: 02/23/21 REG: 20259611 TAT: 181

Lisco Finale 902

Lisco Grand Finale 4103

Lisco Lass 201

Cole Creek Cedar Ridge 1V

Lisco Miss Wrangler 4107

Lisco Miss Wrangler 231

S A V Final Answer 0035
LA Shoshone Lass 4101

Redland Emblazon 2134
Lisco Lass 812

Cole Creek Black Cedar 46P
Cole Creek Clovanada 49S

Big Rok Ole 450
LA Miss Wrangler 307

SALE DAY DATA

SALE WT	
SC	

BW	205 WT	IND	CED	BW	WW	MILK	YW	MARB	RE
86	694	EPDs	8	0.6	65	30	118	2.35	11.5

Calving Ease:

Dam's Production: 6@100

A complete made Grand Finale. Out of a productive, easy fleshing Cedar Ridge. A 3/4 brother to lot 39.



LOT 37

YEARLING BULLS

38 LISCO GRAND FINALE 119

DOB: 02/18/21 REG: 20259582 TAT: 119

Lisco Finale 902
Lisco Grand Finale 4103

Lisco Lass 201

S Summit 4604

Lisco Queen Lady 799

Lisco Queen Lady 225

S A V Final Answer 0035
LA Shoshone Lass 4101

Redland Emblazon 2134

Lisco Lass 812

S Summit 956

S Lass 8245

Redland Emblazon 2134

LA Queen Lady 334

SALE DAY DATA

SALE WT	
SC	

BW	205 WT	IND	CED	BW	WW	MILK	YW	MARB	RE
85	748	EPDs	7	0.8	80	26	137	2.88	11.9

Calving Ease:

Dam's Production: 2@106

A Grand Finale with a power packed EPD profile. Out of a young 4604 that should receive pathfinder status next year.

39 LISCO GRAND FINALE 151

DOB: 02/21/21 REG: 20259594 TAT: 151

Lisco Finale 902
Lisco Grand Finale 4103

Lisco Lass 201

Cole Creek Cedar Ridge 1V

Lisco Girl 639

Lisco Girl 335

S A V Final Answer 0035
LA Shoshone Lass 4101

Redland Emblazon 2134

Lisco Lass 812

Cole Creek Black Cedar 46P

Cole Creek Clovanada 49S

Connealy Front Page 0228

Lisco Girl 9102

SALE DAY DATA

SALE WT	
SC	

BW	205 WT	IND	CED	BW	WW	MILK	YW	MARB	RE
88	763	EPDs	7	0.6	77	28	131	2.32	13.3

Calving Ease:

Dam's Production: 4@108

A 3/4 brother to the lot 37 Grand Finale. Complete in his type and smooth made.

40 LISCO TAHOE 1106

DOB: 02/01/21 REG: 20261262 TAT: 1106

Tehama Upward Y238
Tehama Tahoe B767

Tehama Mary Blackbird Y684

D A R Capitalist P211

Lisco Girl 932

Lisco Girl 437

Sitz Upward 307R
Tehama Elite Blackbird T735

S A V Final Answer 0035

Tehama Mary Blackbird T073

Connealy Capitalist 028

DAR Althea N846

Thomas Up River 1614

Lisco Girl 9102

SALE DAY DATA

SALE WT	
SC	

BW	205 WT	IND	CED	BW	WW	MILK	YW	MARB	RE
79	669	EPDs	10	0.8	68	31	120	3.09	14

Calving Ease: **

Dam's Production: 1@102

A two star calving ease out of a moderate framed perfect uddered P211 first calf heifer.



LOT 39

41 M DIAMOND BUSINESSMAN 152-1

DOB: 03/08/21 REG: 20250614 TAT: 1521

Connealy Capitalist 028
M Diamond Businessman 727

S Gloria 1194

S Cornerstone 607

M Diamond 18 Erica 13-8

Marcys 10 Erica 83-0

S A V Final Answer 0035
Prides Pita of Conanga 8821

GDAR Game Day 449

S Gloria 464

S Whitlock 179

S Blossom 0278

Connealy Freightliner

Marcys 99 Erica 739

SALE DAY DATA

SALE WT	
SC	

BW	205 WT	IND	CED	BW	WW	MILK	YW	MARB	RE
83	731	EPDs	12	0.2	75	29	129	2.95	13.6

Calving Ease: *

Dam's Production: 2@107

This bull has a little more scale than most of the Businessman progeny but does not give up the rib and fleshing ability we have come to expect out of Businessman. His impressive young Cornerstone Dam is on her way to being a second generation Pathfinder.

42 M DIAMOND BUSINESSMAN 66-1

DOB: 02/20/21 REG: 20250002 TAT: 661

Connealy Capitalist 028
M Diamond Businessman 727

S Gloria 1194

S Cornerstone 607

M Diamond Stacked Lady 709

Marcys Stacked Lady 23-1

S A V Final Answer 0035
Prides Pita of Conanga 8821

GDAR Game Day 449

S Gloria 464

S Whitlock 179

S Blossom 0278

G D A R Oscar 734

Marcys Stacked Lady 54-3

SALE DAY DATA

SALE WT	
SC	

BW	205 WT	IND	CED	BW	WW	MILK	YW	MARB	RE
74	714	EPDs	13	-0.5	69	29	117	4.28	12.7

Calving Ease: **

Dam's Production: 1@108

Another impressive two star heifer bull out of the Businessman by Cornerstone mating. This mating has proven very successful and should leave behind outstanding females. This bull is deep and easy fleshing. He should sire females that get the job done in tough conditions.

YEARLING BULLS

43 M DIAMOND N PLUS 1161

DOB: 03/03/21 REG: 20258286 TAT: 1161

Marcys Scale Crusher
Marcys Scale Breaker N Plus
 Marcys Treasure 227
 GGRR Peacemaker 5U
U-2 Erica 495B
 U2 Erica 70Y

Sitz Upward 307R
 Marcys Erica 393
 Redland Emblazon 2021
 Marcys Treasure 947
 S A V Peacemaker 3179
 SCA Lady Ann 03K
 S A V Final Answer 0035
 U-2 Erica 570R

SALE DAY DATA	
SALE WT	
SC	

BW	205 WT	IND	CED	BW	WW	MILK	YW	MARB	RE
80	615	EPDs	9	0.3	55	17	93	2.18	14.1

Calving Ease: ** Dam's Production: 2@96

This bull offers calving ease without giving up on muscle and rib shape. He is easy doing and his dam is an older cow with an exceptional udder.

44 M DIAMOND WRANGLER 171

DOB: 02/21/21 REG: 20258267 TAT: 171

U-2 Coalition 206C
S Wrangler 830
 S Erica 6196

HF Syndicate 213Z
 U2 Erelete 109Z
 S Whitlock 179
 S Erica 3441
 Tosu Mick 9301
 Mystic Hill Rose 050
 Redland Emblazon 2134
 M Diamond Dutchess 410

SALE DAY DATA	
SALE WT	
SC	

BW	205 WT	IND	CED	BW	WW	MILK	YW	MARB	RE
72	656	EPDs	10	0	67	28	118	2.61	11.7

Calving Ease: ** Dam's Production: 1@101

A calving ease prospect whose appeal doesn't stop at just easy calving. Thick, deep and wide just like the other Wrangler sons in the sale. Heifer bull.

45 LISCO TAHOE 1102

DOB: 01/28/21 REG: 20261261 TAT: 1102

Tehama Upward Y238
Tehama Tahoe B767
 Tehama Mary Blackbird Y684
 S Summit 4604
Lisco Shoshone Lass 955
 Lisco Shoshone Lass 178

Sitz Upward 307R
 Tehama Elite Blackbird T735
 S A V Final Answer 0035
 Tehama Mary Blackbird T073
 S Summit 956
 S Lass 8245
 Marcys Trailblazer 757
 LA Shoshone Lass 210

SALE DAY DATA	
SALE WT	
SC	

BW	205 WT	IND	CED	BW	WW	MILK	YW	MARB	RE
86	729	EPDs	4	2.6	75	30	130	2.49	12.4

Calving Ease: Dam's Production: 1@111

Out of a first calf 4604 daughter. A well balanced Tahoe son.

46 LISCO CORNERSTONE 137

DOB: 02/19/21 REG: 20259586 TAT: 137

S Whitlock 179
S Cornerstone 607
 S Blossom 0278

S Chisum 6175
 S Pride Anna 709
 Shipwheel Chinook
 S Blossom 8378
 S A V Final Answer 0035
 Prides Pita of Conanga 8821
 Baldrige Nebraska 901
 L A Ethelda 819 G N

SALE DAY DATA	
SALE WT	
SC	

BW	205 WT	IND	CED	BW	WW	MILK	YW	MARB	RE
80	698	EPDs	7	0.7	67	26	116	2.64	12.8

Calving Ease: * Dam's Production: 3@98

The first of the Cornerstones. Smooth made and should work on larger heifers. Out of an easy fleshing Capitalist daughter. 3/4 brother to lot 47.

47 LISCO CORNERSTONE 147

DOB: 02/22/21 REG: 20259591 TAT: 147

S Whitlock 179
S Cornerstone 607
 S Blossom 0278
 Connealy Capitalist 028
Lisco Blueblood Lady 668
 LA Blueblood Lady 566

S Chisum 6175
 S Pride Anna 709
 Shipwheel Chinook
 S Blossom 8378
 S A V Final Answer 0035
 Prides Pita of Conanga 8821
 Moore Forefront 717
 LA Blueblood Lady 201

SALE DAY DATA	
SALE WT	
SC	

BW	205 WT	IND	CED	BW	WW	MILK	YW	MARB	RE
89	723	EPDs	3	2.4	66	29	109	3.03	12.2

Calving Ease: Dam's Production: 4@103

A 3/4 brother to the lot 46 bull. Our Cornerstone daughters are the right kind for our western environments.

48 LISCO 971 CORNERSTONE 1011

DOB: 03/06/21 REG: 20259622 TAT: 1011

S Cornerstone 607
Lisco Cornerstone 971
 Lisco Lass 125
 S Summit 956
Lisco Mary 781
 Lisco Mary 965

S Whitlock 179
 S Blossom 0278
 Redland Emblazon 2134
 Lisco Lass 6104
 GDAR Game Day 449
 S Pride Anna 709
 Marcys Trailblazer 757
 Lisco Mary 643

SALE DAY DATA	
SALE WT	
SC	

BW	205 WT	IND	CED	BW	WW	MILK	YW	MARB	RE
85	743	EPDs	5	1.5	67	29	117	2.15	14.6

Calving Ease: Dam's Production: 3@105

A stout made deep ribbed Cornerstone grandson. Out of a picture perfect pathfinder Summit daughter. With a big ribeye.

YEARLING BULLS

49 LISCO COALITION 198

DOB: 02/27/21 REG: 20267107 TAT: 198

HF Syndicate 213Z

U-2 Coalition 206C

U2 Erelite 109Z

S Summit 956

Lisco Blueblood Lady 5105

Lisco Blue blood Lady 337

Connealy Consensus 7229

HF Miss Blackcap 27R

Young Dale Xclusive 25X

U-2 Erelite 1X

GDAR Game Day 449

S Pride Anna 709

Connealy Front Page 0228

Lisco Blueblood Lady 738

SALE DAY DATA

SALE	
WT	
SC	

BW	205 WT	IND	CED	BW	WW	MILK	YW	MARB	RE
86	716	EPDs	7	1	58	27	107	3.92	13.4

Calving Ease:

Dam's Production: 5@103

A very complete made Coalition. A full brother sold to Cheryl Lund in last years sale. Above average for both IMF and Ribeye.



LOT 49

50 M DIAMOND COALITION 1181

DOB: 03/10/21 REG: 20258288 TAT: 1181

HF Syndicate 213Z

U-2 Coalition 206C

U2 Erelite 109Z

Bartels Columbus 310

M Diamond Pride 1267

M Diamond Pride 364

Connealy Consensus 7229

HF Miss Blackcap 27R

Young Dale Xclusive 25X

U-2 Erelite 1X

Connealy Earnan 076E

Exec Elmay 6537 1008 Bartels

Sitz 4 Aces 4551

M Diamond Pride 441

SALE DAY DATA

SALE	
WT	
SC	

BW	205 WT	IND	CED	BW	WW	MILK	YW	MARB	RE
94	660	EPDs	2	3.4	61	26	118	2.6	13.6

Calving Ease:

Dam's Production: 3@101

A really big butted, deep ribbed and stylish Coalition son. The Coalition daughters are easy fleshing with impeccable udders.



LOT 50



LOT 48

51 M DIAMOND SEMINOE 1141

DOB: 03/06/21 REG: 20258285 TAT: 1141

Tehama Upward Y238

Tehama Tahoe B767

Tehama Mary Blackbird Y684

Young Dale Xclusive 25X

U2 Erelite 109Z

U-2 Erelite 1X

Sitz Upward 307R

Tehama Elite Blackbird T735

S A V Final Answer 0035

Tehama Mary Blackbird T073

Young Dale Knock Out 134U

Young Dale Pollyanna 60T

S A V Final Answer 0035

U-2 Erelite 8109U

SALE DAY DATA

SALE	
WT	
SC	

BW	205 WT	IND	CED	BW	WW	MILK	YW	MARB	RE
ET-93	ET-751	EPDs	6	0.9	73	31	129	3.02	13

Calving Ease:

Dam's Production: 4@109

The third Tahoe X 109Z flush brother. This bull was my favorite of the 4 at weaning. Again lot of thickness, length and base width just like his brothers. All 4 of these brothers will have unmatched maternal femininity and power. You will want to keep every female out of these brothers! Flush brothers sell as Lots 28, 29 and 84

YEARLING BULLS

52 LISCO JUSTIFIED 120

DOB: 02/18/21 REG: 20259583 TAT: 120

Connealy Judgment

KG Justified 3023

KG Miss Magic 1443

Sitz 4 Aces 4551

Lisco Miss Baros 601

Lisco Miss Baros 331

Connealy Consensus 7229

Entrine of Conanga 9876

Sitz Wisdom 481T

KG Miss Magic 3528

Jauer 353 Traveler 589 27

Sitz Pride 2561

Lisco Finale 902

LA Miss Baros 564

SALE DAY DATA

SALE	
WT	
SC	

BW	205 WT	IND	CED	BW	WW	MILK	YW	MARB	RE
83	680	EPDs	6	0.3	67	25	117	3.36	12.3

Calving Ease:

Dam's Production: 4@106

A stout made wide based Justified. 3/4 brother to lots 54 and 103.



LOT 52

53 LISCO JUSTIFIED 189

DOB: 02/25/21 REG: 20259615 TAT: 189

Connealy Judgment

KG Justified 3023

KG Miss Magic 1443

Big Rok Ole 450

Lisco Girl 245

LA Girl 353

Connealy Consensus 7229

Entrine of Conanga 9876

Sitz Wisdom 481T

KG Miss Magic 3528

G D A R Traveler 044

Big Rok Heather Lass 152

PHA Quantum 015

LA Girl 041

SALE DAY DATA

SALE	
WT	
SC	

BW	205 WT	IND	CED	BW	WW	MILK	YW	MARB	RE
92	655	EPDs	3	1.9	55	29	98	2.69	11.8

Calving Ease:

Dam's Production: 7@99

The Justified bred females are moderate framed and extremely easy fleshing.

54 LISCO JUSTIFIED 139

DOB: 02/21/21 REG: 20259587 TAT: 139

Connealy Judgment

KG Justified 3023

KG Miss Magic 1443

Sitz 4 Aces 4551

Lisco Shoshone Majestic 653

Lisco Shoshone Majestic 7105

Connealy Consensus 7229

Entrine of Conanga 9876

Sitz Wisdom 481T

KG Miss Magic 3528

Jauer 353 Traveler 589 27

Sitz Pride 2561

B C Matrix 4132

LA Shoshone Majestic 513

SALE DAY DATA

SALE	
WT	
SC	

BW	205 WT	IND	CED	BW	WW	MILK	YW	MARB	RE
89	666	EPDs	4	1.3	61	25	108	2.93	12.3

Calving Ease:

Dam's Production: 3@99

3/4 brother to lots 52 and 103. Put a set of closely related Justified to work in you pasture.

55 M DIAMOND WRANGLER 121

DOB: 02/19/21 REG: 20258265 TAT: 121

U-2 Coalition 206C

S Wrangler 830

S Erica 6196

K C F Bennett Fortress

M Diamond Gloria

S Gloria 1194

HF Syndicate 213Z

U2 Erelite 109Z

S Whitlock 179

S Erica 3441

Connealy Consensus

Thomas Patricia 9705

GDAR Game Day 449

S Gloria 464

SALE DAY DATA

SALE	
WT	
SC	

BW	205 WT	IND	CED	BW	WW	MILK	YW	MARB	RE
82	689	EPDs	8	1.1	76	24	134	2.41	13.1

Calving Ease: *

Dam's Production: 1@106

Another thick made, deep ribbed Wrangler son. A bull that is the complete package.

56 M DIAMOND 21 WRANGLER 169-1

DOB: 03/13/21 REG: 20250607 TAT: 1691

U-2 Coalition 206C

S Wrangler 830

S Erica 6196

LD Capitalist 316

M Diamond 19 Erica 22-9

M Diamond 17 Erica 01-7

HF Syndicate 213Z

U2 Erelite 109Z

S Whitlock 179

S Erica 3441

Connealy Capitalist 028

LD Dixie Erica 2053

S A V Resource 1441

Marcy's 10 Erica 83-0

SALE DAY DATA

SALE	
WT	
SC	

BW	205 WT	IND	CED	BW	WW	MILK	YW	MARB	RE
74	727	EPDs	12	-1.1	75	26	127	4.5	14

Calving Ease: **

Dam's Production: 1@110

Don't miss out on this young bull! A very fancy made two star heifer bull out of a first calf heifer who was one of the best of her age group. This bull has an attractive head and front end with a thick top and a big hind quarter. His carcass data came back outstanding and put him in a league of his own. The way that Wrangler has proven himself by siring an attractive phenotype with plenty of muscle in a calving ease package is uncommon and this bull is no exception.

YEARLING BULLS

57 M DIAMOND WRANGLER 151

DOB: 02/21/21 REG: 20258266 TAT: 151

U-2 Coalition 206C

S Wrangler 830

S Erica 6196

Lisco Grand Finale 4103

M Diamond Susie 069

M Diamond Susie 957

HF Syndicate 213Z

U2 Erelite 109Z

S Whitlock 179

S Erica 3441

Lisco Finale 902

Lisco Lass 201

Mystic Hill Balance 4134

M Diamond Susie 705

SALE DAY DATA

SALE	WT
SC	

BW	205 WT	IND	CED	BW	WW	MILK	YW	MARB	RE
83	738	EPDs	8	1.2	80	27	139	3.57	13

Calving Ease: *

Dam's Production: 1@114

This Wrangler son is proof positive of why we are so excited about what the Wrangler progeny have to offer. Wrangler stamps his progeny as heavy muscled, deep and wide, high performing individuals. In addition, he proving to be a calving ease bull that is working very well on first calf heifers. If your breeding goals include calving ease without giving up performance make sure you add these Wrangler progeny to your must-see list. Should work on bigger heifers.

58 M DIAMOND 21 COALITION 68-1

DOB: 02/24/21 REG: 20250003 TAT: 681

HF Syndicate 213Z

U-2 Coalition 206C

U2 Erelite 109Z

Sitz 4 Aces 4551

M Diamond Emma E 396

M Diamond Emma E 111

Connealy Consensus 7229

HF Miss Blackcap 27R

Young Dale Xclusive 25X

U-2 Erelite 1X

Jauer 353 Traveler 589 27

Sitz Pride 2561

S A V Final Answer 0035

M Diamond Emma E 229

SALE DAY DATA

SALE	WT
SC	

BW	205 WT	IND	CED	BW	WW	MILK	YW	MARB	RE
74	602	EPDs	11	-0.9	53	24	102	2.88	12.7

Calving Ease: **

Dam's Production: 4@99

Here is another very attractive Coalition son who is moderate framed and very long bodied. A full sister to this bull was a top replacement heifer who sold to Marcy Livestock. The females behind these Coalition bloodlines are proving to be some of the best maternal cattle we have been around.

59 M DIAMOND TAHOE 371

DOB: 02/27/21 REG: 20258275 TAT: 371

Tehama Upward Y238

Tehama Tahoe B767

Tehama Mary Blackbird Y684

Mystic Hill Balance 4134

M Diamond Duchess 678

M Diamond Dutchess 172

Sitz Upward 307R

Tehama Elite Blackbird T735

S A V Final Answer 0035

Tehama Mary Blackbird T073

Tosu Mick 9301

Mystic Hill Rose 050

SALE DAY DATA

SALE	WT
SC	

BW	205 WT	IND	CED	BW	WW	MILK	YW	MARB	RE
80	743	EPDs	10	0.3	75	32	128	3.08	13.7

Calving Ease: **

Dam's Production: 1@115

Like his sire this Tahoe son offers the complete package. Calving ease, performance and maternal excellence fill this bull pedigree. This is another good one! Will work well on heifers.



LOT 59

60 LISCO JUSTIFIED 148

DOB: 02/22/21 REG: 20259592 TAT: 148

Connealy Judgment

KG Justified 3023

KG Miss Magic 1443

S Chisum 0263

Lisco Eileen 478

LA Eileen 537

Connealy Consensus 7229

Entrine of Conanga 9876

Sitz Wisdom 481T

KG Miss Magic 3528

S Chisum 6175

S Spring Creek Lady 428

SALE DAY DATA

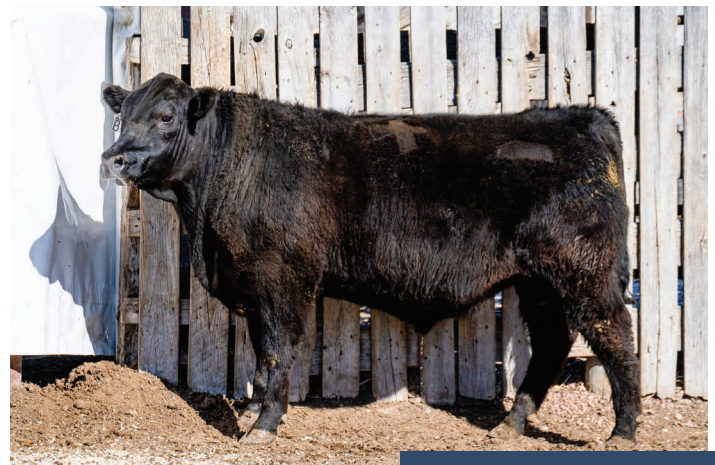
SALE	WT
SC	

BW	205 WT	IND	CED	BW	WW	MILK	YW	MARB	RE
85	745	EPDs	8	-0.9	64	28	107	2.75	13.4

Calving Ease: *

Dam's Production: 5@103

A smooth made, deep ribbed Justified son that should work on larger heifers.



LOT 60

YEARLING BULLS

61 LISCO JUSTIFIED 146

DOB: 02/21/21 REG: 20259590 TAT: 146

Connealy Judgment
KG Justified 3023
 KG Miss Magic 1443
 S Chisum 6175
Lisco Blueblood Lady 520
 Lisco Blueblood Lady 005

Connealy Consensus 7229
 Entrine of Conanga 9876
 Sitz Wisdom 481T
 KG Miss Magic 3528
 S Alliance 3313
 S Gloria 464
 S A V Final Answer 0035
 LA Blueblood Lady 566

SALE DAY DATA	
SALE WT	
SC	

BW	205 WT	IND	CED	BW	WW	MILK	YW	MARB	RE
87	699	EPDs	6	1.1	64	26	110	3.34	12.8

Calving Ease: **Dam's Production: 4@102**

A great maternal match up here, Justified x Chisum.

62 LISCO JUSTIFIED 175

DOB: 02/23/21 REG: 20259608 TAT: 175

Connealy Judgment
KG Justified 3023
 KG Miss Magic 1443
 Connealy Front Page 0228
Lisco Girl 335
 Lisco Girl 9102

Connealy Consensus 7229
 Entrine of Conanga 9876
 Sitz Wisdom 481T
 KG Miss Magic 3528
 Connealy Forefront
 Ebony Lit of Conanga 840
 S A V Final Answer 0035
 Lisco Girl 721

SALE DAY DATA	
SALE WT	
SC	

BW	205 WT	IND	CED	BW	WW	MILK	YW	MARB	RE
88	693	EPDs	7	0.2	59	28	103	2.88	12.9

Calving Ease: **Dam's Production: 6@102**

A balanced and complete Justified that is gaining well on feed. Out of a easy fleshing Front Page daughter.

63 LISCO TAHOE 107

DOB: 02/15/21 REG: 20259578 TAT: 107

Tehama Upward Y238
Tehama Tahoe B767
 Tehama Mary Blackbird Y684
 S A V Final Answer 0035
Lisco Queen Lady 301
 Lisco Queen Lady 810

Sitz Upward 307R
 Tehama Elite Blackbird T735
 S A V Final Answer 0035
 Tehama Mary Blackbird T073
 Sitz Traveler 8180
 S A V Emulous 8145
 Sitz Alliance 6595
 LA Queen Lady 941

SALE DAY DATA	
SALE WT	
SC	

BW	205 WT	IND	CED	BW	WW	MILK	YW	MARB	RE
78	652	EPDs	11	-0.9	57	30	100	3.5	13.6

Calving Ease: ** **Dam's Production: 7@99**

A sleep at night heifer bull with above average IMF and ribeye. 3/4 brother to lots 81 and 112.

64 M DIAMOND COALITION 451

DOB: 03/02/21 REG: 20258276 TAT: 451

HF Syndicate 213Z
U-2 Coalition 206C
 U2 Erelite 109Z
 GDAR Game Day 449
S Gloria 1194
 S Gloria 464

Connealy Consensus 7229
 HF Miss Blackcap 27R
 Young Dale Xclusive 25X
 U-2 Erelite 1X
 Boyd New Day 8005
 G D A R Miss Wix 474
 S Eclipse 169
 S Gloria 209

SALE DAY DATA	
SALE WT	
SC	

BW	205 WT	IND	CED	BW	WW	MILK	YW	MARB	RE
ET-69	ET-619	EPDs	10	0.3	60	23	115	2.88	13.4

Calving Ease: ** **Dam's Production: 1@101**

A ET son of Coalition out of the 1194 cow who is also the mother of our Businessman herd sire. Tremendous calving ease and maternal power are bred deep into this bull. His dam is a Game Day daughter out of Chisum's dam. Big potential wrapped up in this one! This one works on heifers. Flush brother sells as Lot 66.

65 LISCO COALITION 157

DOB: 02/20/21 REG: 20259598 TAT: 157

HF Syndicate 213Z
U-2 Coalition 206C
 U2 Erelite 109Z
 S Summit 956
Lisco Mary 8109
 Lisco Mary 626

Connealy Consensus 7229
 HF Miss Blackcap 27R
 Young Dale Xclusive 25X
 U-2 Erelite 1X
 GDAR Game Day 449
 S Pride Anna 709
 Cole Creek Cedar Ridge 1V
 Lisco Mary 1105

SALE DAY DATA	
SALE WT	
SC	

BW	205 WT	IND	CED	BW	WW	MILK	YW	MARB	RE
80	755	EPDs	8	0.7	62	32	113	2.27	13.3

Calving Ease: * **Dam's Production: 2@114**

Complete, smooth and balanced. 3/4 brother to lot 49,67,80,92 and 104.

66 M DIAMOND 21 COALITION 83-1

DOB: 03/06/21 REG: 20250975 TAT: 831

HF Syndicate 213Z
U-2 Coalition 206C
 U2 Erelite 109Z
 GDAR Game Day 449
S Gloria 1194
 S Gloria 464

Connealy Consensus 7229
 HF Miss Blackcap 27R
 Young Dale Xclusive 25X
 U-2 Erelite 1X
 Boyd New Day 8005
 G D A R Miss Wix 474
 S Eclipse 169
 S Gloria 209

SALE DAY DATA	
SALE WT	
SC	

BW	205 WT	IND	CED	BW	WW	MILK	YW	MARB	RE
ET-74	ET-630	EPDs	10	0.3	60	23	115	2.42	12.7

Calving Ease: ** **Dam's Production: 1@101**

This bull was also produced in the ET program and is sired by Coalition who needs no introduction and out of the 1194 cow known for producing Businessman. This clean fronted smooth made calving ease prospect has maternal written all over him. If you want females out of your heifers to make the replacement pen, this bull will be one you need to find. Flush brother sells as Lot 64.

YEARLING BULLS

67 LISCO COALITION 1001

DOB: 02/27/21 REG: 20259621 TAT: 1001

HF Syndicate 213Z

U-2 Coalition 206C

U2 Erelite 109Z

S Summit 956

Lisco Queen Lady 6107

Lisco Queen Lady 4112

Connealy Consensus 7229

HF Miss Blackcap 27R

Young Dale Xclusive 25X

U-2 Erelite 1X

GDAR Game Day 449

S Pride Anna 709

Lisco Finale 902

Lisco Queen Lady 225

SALE DAY DATA

SALE	WT
SC	

BW	205 WT	IND	CED	BW	WW	MILK	YW	MARB	RE
88	639	EPDs	6	1.7	57	28	108	2.94	12.9

Calving Ease:

Dam's Production: 3@109

Out of a highly productive Summit daughter with a picture perfect udder. Our First Coalitions are calving now and they fit the mold.

68 M DIAMOND 21 CAP 316 69-1

DOB: 02/26/21 REG: 20250860 TAT: 691

Connealy Capitalist 028

LD Capitalist 316

LD Dixie Erica 2053

Sitz Upward 307R

Marcys 13 Ethelda E 15-3

Marcys 01 Ethelda E 82-1

S A V Final Answer 0035

Prides Pita of Conanga 8821

C A Future Direction 5321

LD Dixie Erica Oar 0853

Connealy Onward

Sitz Henrietta Pride 81M

Marcys Traveler 1148 132-9

Marcys 99 Ethelda E 929

SALE DAY DATA

SALE	WT
SC	

BW	205 WT	IND	CED	BW	WW	MILK	YW	MARB	RE
ET-82	ET-706	EPDs	8	1.3	66	30	114	3.47	13

Calving Ease: *

Dam's Production: 4@105

An outstanding individual out of the ET program who has not disappointed. Out of Cap 316 who has garnered the attention of cattleman all over the world by the prized 15-3 cow who continues to produce progeny who are at the top end year in and out. Full brothers sell as Lots 14, 24, 25 and 26 and will sire females who will be at the top end of any replacement pen.

69 LISCO GRAND FINALE 110

DOB: 02/16/21 REG: 20259579 TAT: 110

Lisco Finale 902

Lisco Grand Finale 4103

Lisco Lass 201

Cole Creek Cedar Ridge 1V

Lisco Miss Baros 5112

Lisco Miss Baros 331

S A V Final Answer 0035

LA Shoshone Lass 4101

Redland Emblazon 2134

Lisco Lass 812

Cole Creek Black Cedar 46P

Cole Creek Clovanada 49S

Lisco Finale 902

LA Miss Baros 564

SALE DAY DATA

SALE	WT
SC	

BW	205 WT	IND	CED	BW	WW	MILK	YW	MARB	RE
75	675	EPDs	10	-0.4	70	24	121	2.8	12.4

Calving Ease: **

Dam's Production: 5@101

A sure fire heifer bull with an outstanding EPD profile.

70 M DIAMOND BOARDWALK 471

DOB: 03/02/21 REG: 20258278 TAT: 471

Coleman Bravo 6313

U2 Boardwalk 407G

U-2 Ms Morrison 259Z

Redland Emblazon 2134

M Diamond Beauty 446

Ox Bow Beauty 622

Coleman Charlo 0256

Coleman Donna 714

Young Dale Xclusive 25X

U-2 Ms Morrison 134X

O C C Emblazon 854E

Redland Henrietta Pride 1812

Hyline Right Time 338

Ox Bow Beauty 142

SALE DAY DATA

SALE	WT
SC	

BW	205 WT	IND	CED	BW	WW	MILK	YW	MARB	RE
89	616	EPDs	2	2.9	55	26	102	2.64	13.6

Calving Ease:

Dam's Production: 2@102

This bull is a brute. He has muscle and rib shape to burn. The kind that Thrive in our Wyoming pastures. He has really turned the crank since weaning. We are excited with what we are seeing in the Boardwalk progeny

71 M DIAMOND WRANGLER 191

DOB: 02/22/21 REG: 20258268 TAT: 191

U-2 Coalition 206C

S Wrangler 830

S Erica 6196

Marcys Scale Breaker N Plus

M Diamond Emma E 659

M Diamond Emma E 625

HF Syndicate 213Z

U2 Erelite 109Z

S Whitlock 179

S Erica 3441

Marcys Scale Crusher

Marcys Treasure 227

S Rainmaker 110

M Diamond Emma E 368

SALE DAY DATA

SALE	WT
SC	

BW	205 WT	IND	CED	BW	WW	MILK	YW	MARB	RE
84	669	EPDs	3	2.7	74	23	129	3.15	14.5

Calving Ease:

Dam's Production: 1@103

Powerful performance in a thick and deep package. Add in the maternal strength in this bulls pedigree and he is a must see sale day.

72 M DIAMOND TAHOE 271

DOB: 02/25/21 REG: 20258270 TAT: 271

Tehama Upward Y238

Tehama Tahoe B767

Tehama Mary Blackbird Y684

S Cornerstone 607

M Diamond Erica 829

Marcys Erica 72-1

Sitz Upward 307R

Tehama Elite Blackbird T735

S A V Final Answer 0035

Tehama Mary Blackbird T073

S Whitlock 179

S Blossom 0278

G D A R Oscar 734

Marcys 03 Erica 113-3

SALE DAY DATA

SALE	WT
SC	

BW	205 WT	IND	CED	BW	WW	MILK	YW	MARB	RE
92	681	EPDs	0	4	75	31	130	3.94	12.6

Calving Ease:

Dam's Production: 1@105

A higher performing Tahoe son out of a Cornerstone daughter that is doing a very nice job. Cornerstone daughters have been exceptional in our herd. Cornerstone records 60 daughters in production that have recorded 80 calves ratioing 102 at weaning!

YEARLING BULLS

73 LISCO GRAND FINALE 117

DOB: 02/18/21 REG: 20259581 TAT: 117

Lisco Finale 902

Lisco Grand Finale 4103

Lisco Lass 201

Marcys Dash 111

Lisco Majestic 348

Lisco Majestic 828

S A V Final Answer 0035
LA Shoshone Lass 4101

Redland Emblazon 2134
Lisco Lass 812

Sitz Dash 10277
Marcys Forever Lady 935

Baldridge Nebraska 901
LA Majestic 344

SALE DAY DATA	
SALE WT	
SC	

BW	205 WT	IND	CED	BW	WW	MILK	YW	MARB	RE
79	691	EPDs	10	-0.4	68	24	120	4.01	12.7

Calving Ease: **

Dam's Production: 7@100

Another two star Grand Finale with a High IMF ratio. Smooth made and balanced.

74 LISCO 971 CORNERSTONE 1026

DOB: 03/21/21 REG: 20259624 TAT: 1026

S Cornerstone 607

Lisco Cornerstone 971

Lisco Lass 125

Marcys Cedar Ridge 536

Lisco Cora 879

Lisco Cora 5124

S Whitlock 179
S Blossom 0278

Redland Emblazon 2134
Lisco Lass 6104

Cole Creek Cedar Ridge 1V
Marcys Erica 864

G A R Composure
XLAR Cora A07

SALE DAY DATA	
SALE WT	
SC	

BW	205 WT	IND	CED	BW	WW	MILK	YW	MARB	RE
80	767	EPDs	7	0.7	70	29	125	2.63	13.1

Calving Ease: *

Dam's Production: 2@108

A one star Cornerstone grandson out of a Cedar Ridge grand daughter that will be pathfinder next year.

75 LISCO GRAND FINALE 1005

DOB: 03/02/21 REG: 20259620 TAT: 1005

Lisco Finale 902

Lisco Grand Finale 4103

Lisco Lass 201

GDAR Game Day 449

Lisco Bardella 235

LA Bardella 222

S A V Final Answer 0035
LA Shoshone Lass 4101

Redland Emblazon 2134
Lisco Lass 812

Boyd New Day 8005
G D A R Miss Wix 474

Sitz Alliance 6595
L A Bardella 671 M

SALE DAY DATA	
SALE WT	
SC	

BW	205 WT	IND	CED	BW	WW	MILK	YW	MARB	RE
84	715	EPDs	6	0.6	75	24	128	2.8	13.3

Calving Ease: *

Dam's Production: 8@101

Out of a proven low birth weight Game Day daughter, should work on larger heifers. Maternal package here.

76 LISCO GRAND FINALE 153

DOB: 02/20/21 REG: 20259595 TAT: 153

Lisco Finale 902

Lisco Grand Finale 4103

Lisco Lass 201

Leachman Right Time

Marcys 15 Ethelda E 26-5

Marcys O1 Ethelda E 82-1

S A V Final Answer 0035
LA Shoshone Lass 4101

Redland Emblazon 2134
Lisco Lass 812

N Bar Emulation EXT
Leachman Erica 0025

Marcys Traveler 1148 132-9
Marcys 99 Ethelda E 929

SALE DAY DATA	
SALE WT	
SC	

BW	205 WT	IND	CED	BW	WW	MILK	YW	MARB	RE
86	760	EPDs	6	0.7	71	28	120	2.15	12.2

Calving Ease:

Dam's Production: 4@104

A high performing Grand Finale out of a perfectly uddered Right Time daughter.

77 M DIAMOND 21 LANDMARK 164-1

DOB: 03/10/21 REG: 20249999 TAT: 1641

Circle L Gus

Circle L Landmark

Circle L Queen 307B

Redland Emblazon 2134

M Diamond Duchess 883

M Diamond Dutchess 410

S Chisum 6175
Circle L PRIDE X097

S A V Angus Valley 1867
CIRCLE L Queen 158z

O C C Emblazon 854E
Redland Henrietta Pride 181z

Sitz Alliance 6595
M Diamond Dutchess 528

SALE DAY DATA	
SALE WT	
SC	

BW	205 WT	IND	CED	BW	WW	MILK	YW	MARB	RE
95	675	EPDs	1	3.7	63	26	114	3.84	11.6

Calving Ease:

Dam's Production: 7@104

Here in an interesting breeding piece with an outcross pedigree on the top side out of a very productive Emblazon 2134 dam. This bull is a deep ribbed, easy fleshing bull with an attractive phenotype that is sure to catch your eye. His dam has been very productive and is bred back AI every year.

78 M DIAMOND CORNERSTONE 1081

DOB: 03/06/21 REG: 20258283 TAT: 1081

S Whitlock 179

S Cornerstone 607

S Blossom 0278

Basin Payweight 1682

M Diamond Gloria 867

S Gloria 1194

S Chisum 6175
S Pride Anna 709

Shipwheel Chinook
S Blossom 8378

Basin Payweight 006S
21AR O Lass 7017

GDAR Game Day 449
S Gloria 464

SALE DAY DATA	
SALE WT	
SC	

BW	205 WT	IND	CED	BW	WW	MILK	YW	MARB	RE
86	685	EPDs	7	0.8	70	30	120	2.54	12.7

Calving Ease:

Dam's Production: 3@101

This is a good Cornerstone son out of a moderate framed Payweight 1682 daughter. Excellent maternal genetics here.

YEARLING BULLS

79 M DIAMOND WRANGLER 1171

DOB: 03/10/21 REG: 20258287 TAT: 1171

U-2 Coalition 206C

S Wrangler 830

S Erica 6196

Lisco Grand Finale 4103

M Diamond Susie 209

M Diamond Susie 087

HF Syndicate 213Z

U2 Erelite 109Z

S Whitlock 179

S Erica 3441

Lisco Finale 902

Lisco Lass 201

Mystic Hill Balance 4134

M Diamond Susie 335

SALE DAY DATA

SALE	WT
SC	

BW	205 WT	IND	CED	BW	WW	MILK	YW	MARB	RE
82	661	EPDs	8	0.9	72	24	127	2.99	14.1

Calving Ease: *

Dam's Production: 1@102

Another thick made, easy doing Wrangler son that should work very well on larger heifers.

80 LISCO COALITION 128

DOB: 02/18/21 REG: 20259585 TAT: 128

HF Syndicate 213Z

U-2 Coalition 206C

U2 Erelite 109Z

S Summit 956

Lisco Wrangler 505

Lisco Wrangler 247

Connealy Consensus 7229

HF Miss Blackcap 27R

Young Dale Xclusive 25X

U-2 Erelite 1X

GDAR Game Day 449

S Pride Anna 709

Redland Emblazon 2134

Lisco Wrangler 6103

SALE DAY DATA

SALE	WT
SC	

BW	205 WT	IND	CED	BW	WW	MILK	YW	MARB	RE
82	659	EPDs	8	1	53	28	102	2.36	13.8

Calving Ease: *

Dam's Production: 5@101

Another Coalition x Summit combination. Balanced, complete with above average ribeye.

81 LISCO TAHOE 174

DOB: 02/23/21 REG: 20259607 TAT: 174

Tehama Upward Y238

Tehama Tahoe B767

Tehama Mary Blackbird Y684

S A V Final Answer 0035

Marcys 15 Pride 58-5

Marcys 13 Pride 33-3

Sitz Upward 307R

Tehama Elite Blackbird T735

S A V Final Answer 0035

Tehama Mary Blackbird T073

Sitz Traveler 8180

S A V Emulous 8145

G D A R Oscar 734

Marcys 08 Pride 162-8

SALE DAY DATA

SALE	WT
SC	

BW	205 WT	IND	CED	BW	WW	MILK	YW	MARB	RE
88	715	EPDs	6	1.2	70	27	122	4.81	12

Calving Ease:

Dam's Production: 5@98

A smooth made big topped Tahoe son with a high IMF ratio.

82 LISCO 971 CORNERSTONE 1015

DOB: 03/08/21 REG: 20259623 TAT: 1015

S Cornerstone 607

Lisco Cornerstone 971

Lisco Lass 125

Sitz 4 Aces 4551

Lisco Bardella 602

Lisco Bardella 304

S Whitlock 179

S Blossom 0278

Redland Emblazon 2134

Lisco Lass 6104

Jauer 353 Traveler 589 27

Sitz Pride 2561

Lisco Finale 902

LA Bardella 4103

SALE DAY DATA

SALE	WT
SC	

BW	205 WT	IND	CED	BW	WW	MILK	YW	MARB	RE
85	723	EPDs	4	1.9	69	23	123	2.09	12.9

Calving Ease:

Dam's Production: 4@96

A Cornerstone grandson that is deep ribbed with a big top.

83 LISCO TAHOE 187

DOB: 02/25/21 REG: 20259613 TAT: 187

Tehama Upward Y238

Tehama Tahoe B767

Tehama Mary Blackbird Y684

Redland Emblazon 2134

Lisco Eileen 145

LA Eileen 930

Sitz Upward 307R

Tehama Elite Blackbird T735

S A V Final Answer 0035

Tehama Mary Blackbird T073

O C C Emblazon 854E

Redland Henrietta Pride 1812

Marcys 93 734 7

L A Eileen 026 21

SALE DAY DATA

SALE	WT
SC	

BW	205 WT	IND	CED	BW	WW	MILK	YW	MARB	RE
80	722	EPDs	8	0.2	66	28	110	2.48	13.1

Calving Ease: *

Dam's Production: 9@101

Out of a 2134 daughter that never misses, bred A.I. every year. Should work on larger heifers.

84 M DIAMOND GLENDO 351

DOB: 02/27/21 REG: 20258274 TAT: 351

Tehama Upward Y238

Tehama Tahoe B767

Tehama Mary Blackbird Y684

Young Dale Xclusive 25X

U2 Erelite 109Z

U-2 Erelite 1X

Sitz Upward 307R

Tehama Elite Blackbird T735

S A V Final Answer 0035

Tehama Mary Blackbird T073

Young Dale Knock Out 134U

Young Dale Pollyanna 60T

S A V Final Answer 0035

U-2 Erelite 8109U

SALE DAY DATA

SALE	WT
SC	

BW	205 WT	IND	CED	BW	WW	MILK	YW	MARB	RE
ET-82	ET-677	EPDs	6	0.9	73	31	129	2.17	12.7

Calving Ease: *

Dam's Production: 4@109

Flush brother to lots 28, 29 and 51. Just like his brothers he is deep and thick. Keep all the daughters out of this one! Should work on bigger heifers.

YEARLING BULLS

85

DOB: 03/27/21 REG: PENDING TAT: 1431

Pending Parentage Test

Connealy Capitalist 028
M Diamond Gloria 577
 S Gloria 1194

S A V Final Answer 0035
 Prides Pita of Conanga 8821
 GDAR Game Day 449
 S Gloria 464

SALE DAY DATA	
SALE WT	RE
SC	

BW	205 WT	IND	CED	BW	WW	MILK	YW	MARB	RE
89	670	EPDs	4	2.3	67	22	126	2.25	13.3

Calving Ease:

Dam's Production: 3@103

Lots of hindquarter, rib shape and performance in this younger bull.

86

LISCO POWERPOINT 1122

DOB: 02/28/21 REG: 20261264 TAT: 1122

S Powerpoint WS 5503
S Powerpoint 986
 S Elcona 7110

Tehama Revere
 S Queen Essa 248
 U-2 Coalition 206C
 S Elcona 698

JMB Traction 292

Lisco Miss Baros 961
 Lisco Miss Baros 4106

Sitz Top Game 561X
 JMB Emulota 013
 Lisco No Question 802
 Lisco Miss Baros 251

SALE DAY DATA	
SALE WT	RE
SC	

BW	205 WT	IND	CED	BW	WW	MILK	YW	MARB	RE
84	721	EPDs	6	1.6	74	23	129	4.31	13.8

Calving Ease:

Dam's Production: 1@110

A high IMF and big ribeye son of our Power Point Herd sire. Out of a first calf Traction daughter.

87

LISCO CORNERSTONE 115

DOB: 02/17/21 REG: 20259580 TAT: 115

S Whitlock 179
S Cornerstone 607
 S Blossom 0278

S Chisum 6175
 S Pride Anna 709
 Shipwheel Chinook
 S Blossom 8378

HA Cowboy Up 5405

Lisco Erica 817
 Lisco Erica 4108

HA Outside 3008
 HA Blackcap Lady 1602
 Cole Creek Cedar Ridge 1V
 Lisco Erica 205

SALE DAY DATA	
SALE WT	RE
SC	

BW	205 WT	IND	CED	BW	WW	MILK	YW	MARB	RE
77	683	EPDs	9	0.3	68	29	119	2.47	12.2

Calving Ease: **

Dam's Production: 1@103

A two star Cornerstone son out of a deep ribbed wide body Cowboy Up daughter. 3/4 brother to lot 88.

88

LISCO CORNERSTONE 178

DOB: 02/23/21 REG: 20259609 TAT: 178

S Whitlock 179
S Cornerstone 607
 S Blossom 0278

S Chisum 6175
 S Pride Anna 709
 Shipwheel Chinook
 S Blossom 8378

HA Cowboy Up 5405

Lisco Mary 826
 Lisco Mary 521

HA Outside 3008
 HA Blackcap Lady 1602
 Cole Creek Cedar Ridge 1V
 Lisco Mary 965

SALE DAY DATA	
SALE WT	RE
SC	

BW	205 WT	IND	CED	BW	WW	MILK	YW	MARB	RE
80	742	EPDs	6	1.1	73	29	125	3.16	13.7

Calving Ease: *

Dam's Production: 1@111

3/4 brother to lot 87. Should work on larger heifers.

89

M DIAMOND BOARDWALK 1261

DOB: 03/18/21 REG: 20258289 TAT: 1261

Coleman Bravo 6313
U2 Boardwalk 407G
 U-2 Ms Morrison 259Z

Coleman Charlo 0256
 Coleman Donna 714
 Young Dale Xclusive 25X
 U-2 Ms Morrison 134X

Sitz 4 Aces 4551

M Diamond Susie 624
 M Diamond Susie 607

Jauer 353 Traveler 589 27
 Sitz Pride 2561
 Sitz Rainmaker 6169
 M Diamond Susie 609

SALE DAY DATA	
SALE WT	RE
SC	

BW	205 WT	IND	CED	BW	WW	MILK	YW	MARB	RE
98	665	EPDs	-2	4.7	67	24	121	2.07	13.4

Calving Ease:

Dam's Production: 5@104

Wide based with a big spring of rib. The kind that can thrive in our environment.

90

LISCO TAHOE 142

DOB: 02/21/21 REG: 20259588 TAT: 142

Tehama Upward Y238
Tehama Tahoe B767
 Tehama Mary Blackbird Y684

Sitz Upward 307R
 Tehama Elite Blackbird T735
 S A V Final Answer 0035
 Tehama Mary Blackbird T073

Redland Emblazon 2134

M Diamond Beauty 646
 Ox Bow Beauty 622

O C C Emblazon 854E
 Redland Henrietta Pride 1812
 Hyline Right Time 338
 Ox Bow Beauty 142

SALE DAY DATA	
SALE WT	RE
SC	

BW	205 WT	IND	CED	BW	WW	MILK	YW	MARB	RE
87	688	EPDs	6	1.5	65	30	113	2.94	12.3

Calving Ease:

Dam's Production: 3@103

A well balanced, smooth made Tahoe son. 3/4 brother to lot 83.

YEARLING BULLS

91 M DIAMOND COALITION 281

DOB: 02/25/21 REG: 20258271 TAT: 281

HF Syndicate 213Z

U-2 Coalition 206C

U2 Erelite 109Z

Sitz 4 Aces 4551

M Diamond Emma E 627

M Diamond Emma E 330

Connealy Consensus 7229

HF Miss Blackcap 27R

Young Dale Xclusive 25X

U-2 Erelite 1X

Jauer 353 Traveler 589 27

Sitz Pride 2561

Sitz Alliance 6595

M Diamond Emma E 385

SALE DAY DATA

SALE	WT
SC	

BW	205 WT	IND	CED	BW	WW	MILK	YW	MARB	RE
81	658	EPDs	6	1.2	59	25	110	2.55	14.3

Calving Ease:

Dam's Production: 2@104

Another thick butted Coalition that looks like an Angus bull should look.

92 LISCO COALITION 169

DOB: 02/22/21 REG: 20259606 TAT: 169

HF Syndicate 213Z

U-2 Coalition 206C

U2 Erelite 109Z

S Summit 956

Lisco Blueblood Lady 8116

Lisco Blueblood Lady 668

Connealy Consensus 7229

HF Miss Blackcap 27R

Young Dale Xclusive 25X

U-2 Erelite 1X

GDAR Game Day 449

S Pride Anna 709

Connealy Capitalist 028

LA Blueblood Lady 566

SALE DAY DATA

SALE	WT
SC	

BW	205 WT	IND	CED	BW	WW	MILK	YW	MARB	RE
78	718	EPDs	8	0.9	57	28	106	2.83	12.3

Calving Ease: **

Dam's Production: 2@105

A two star Coalition x Summit. Moderate framed and very complete.

93 LISCO JUSTIFIED 196

DOB: 02/26/21 REG: 20259618 TAT: 196

Connealy Judgment

KG Justified 3023

KG Miss Magic 1443

Connealy Front Page 0228

Lisco Mary 1105

Lisco Mary 941

Connealy Consensus 7229

Entrine of Conanga 9876

Sitz Wisdom 481T

KG Miss Magic 3528

Connealy Forefront

Ebony Lit of Conanga 840

Sitz Alliance 6595

LA Mary 951

SALE DAY DATA

SALE	WT
SC	

BW	205 WT	IND	CED	BW	WW	MILK	YW	MARB	RE
88	724	EPDs	7	0.5	57	32	97	3.03	12.2

Calving Ease:

Dam's Production: 9@104

A moderate framed big topped Justified son that is easy fleshing.

94 M DIAMOND 21 COALITION 88-1

DOB: 03/07/21 REG: 20250835 TAT: 881

HF Syndicate 213Z

U-2 Coalition 206C

U2 Erelite 109Z

S Cornerstone 607

M Diamond 18 Emma E 12-8

M Diamond Emma E 025

Connealy Consensus 7229

HF Miss Blackcap 27R

Young Dale Xclusive 25X

U-2 Erelite 1X

S Whitlock 179

S Blossom 0278

Cole Creek Cedar Ridge 1V

M Diamond Emma E 1283

SALE DAY DATA

SALE	WT
SC	

BW	205 WT	IND	CED	BW	WW	MILK	YW	MARB	RE
93	696	EPDs	4	2.3	63	29	117	2.65	13.2

Calving Ease:

Dam's Production: 2@106

Another powerful Coalition son who is destined to leave behind attractive and productive females. This bull has a thick top and a long hip that the Coalition progeny are known for. His Dam is another cow who is on track to become a second generation Pathfinder with a weaning ratio of 2 @ 106.

95 M DIAMOND 21 COALITION 158-1

DOB: 03/09/21 REG: 20249996 TAT: 1581

HF Syndicate 213Z

U-2 Coalition 206C

U2 Erelite 109Z

S Chisum 6175

M Diamond Emma E 597

M Diamond Emma E 330

Connealy Consensus 7229

HF Miss Blackcap 27R

Young Dale Xclusive 25X

U-2 Erelite 1X

S Alliance 3313

S Gloria 464

Sitz Alliance 6595

M Diamond Emma E 385

SALE DAY DATA

SALE	WT
SC	

BW	205 WT	IND	CED	BW	WW	MILK	YW	MARB	RE
75	637	EPDs	10	0	54	24	101	2.22	11.9

Calving Ease: **

Dam's Production: 3@95

A Coalition son whose Dam is derived from the ET program. Once again, this bull is destined to produce great females as some of the greatest female sires of the breed are in his pedigree.

96 M DIAMOND COALITION 541

DOB: 03/03/21 REG: 20258279 TAT: 541

HF Syndicate 213Z

U-2 Coalition 206C

U2 Erelite 109Z

Mystic Hill Balance 4134

M Diamond Beauty 018

M Diamond Beauty 366

Connealy Consensus 7229

HF Miss Blackcap 27R

Young Dale Xclusive 25X

U-2 Erelite 1X

Tosu Mick 9301

Mystic Hill Rose 050

Sitz 4 Aces 4551

M Diamond Beauty 332

SALE DAY DATA

SALE	WT
SC	

BW	205 WT	IND	CED	BW	WW	MILK	YW	MARB	RE
80	646	EPDs	10	0.2	56	25	107	3.56	12.4

Calving Ease: **

Dam's Production: 1@100

Should work well on all heifers.

YEARLING BULLS

97 LISCO COALITION 1110

DOB: 02/03/21 REG: 20261263 TAT: 1110

HF Syndicate 213Z
U-2 Coalition 206C
 U2 Erelite 109Z
 Musgrave Fundamental
Lisco Miss Wrangler 9119
 Lisco Miss Wrangler 7126

Connealy Consensus 7229
 HF Miss Blackcap 27R
 Young Dale Xclusive 25X
 U-2 Erelite 1X
 LD Capitalist 316
 MA Black Bess 642
 S Summit 956
 Lisco Miss Wrangler 581

SALE DAY DATA	
SALE WT	RE
SC	

BW	205 WT	IND	CED	BW	WW	MILK	YW	MARB	RE
83	682	EPDs	5	2.6	64	26	119	3.96	14.1

Calving Ease: **Dam's Production: 1@104**

Out of a first calf Musgrave Fundamental daughter. High IMF and Ribeye.

98 LISCO JUSTIFIED 155

DOB: 02/22/21 REG: 20259597 TAT: 155

Connealy Judgment
KG Justified 3023
 KG Miss Magic 1443
 Big Rok Ole 450
Lisco Erica 205
 LA Erica 230

Connealy Consensus 7229
 Entrine of Conanga 9876
 Sitz Wisdom 481T
 KG Miss Magic 3528
 G D A R Traveler 044
 Big Rok Heather Lass 152
 S A F Focus of E R
 L A Erica 506 Os

SALE DAY DATA	
SALE WT	RE
SC	

BW	205 WT	IND	CED	BW	WW	MILK	YW	MARB	RE
79	648	EPDs	9	-0.6	53	30	96	3.04	12

Calving Ease: ** **Dam's Production: 8@99**

A two star calving ease Justified son with balanced EPD's.

99 M DIAMOND BUSINESSMAN 161-1

DOB: 03/09/21 REG: 20250636 TAT: 1611

Connealy Capitalist 028
M Diamond Businessman 727
 S Gloria 1194
 Redland Emblazon 2021
Marcys Treasure 227
 Marcys Treasure 947

S A V Final Answer 0035
 Prides Pita of Conanga 8821
 GDAR Game Day 449
 S Gloria 464
 O C C Emblazon 854E
 Redland Blackcap 1289
 Sitz Alliance 6595
 Marcys Treasure 496

SALE DAY DATA	
SALE WT	RE
SC	

BW	205 WT	IND	CED	BW	WW	MILK	YW	MARB	RE
ET-85	ET-713	EPDs	8	1.6	67	26	112	1.92	14

Calving Ease: **Dam's Production: 5@105**

Here is another bull that derives from the ET program. His Pathfinder Dam was purchased from Marcy Livestock and is known for producing Marcys Scale Breaker N Plus. The mating of 227 and Businessman is very intriguing and will produce thick butted, soggy calves at weaning time and females that are the easy keeping kind.

100 M DIAMOND UPROAR 1321

DOB: 03/23/21 REG: 20258291 TAT: 1321

Bruin Uproar 0070
Bowman Uproar 608
 Bowman Zuni B53xY69
 Marcys Scale Crusher
M Diamond Stacked Lady 198
 Marcys Stacked Lady 23-1

Sitz Upward 307R
 Falcon Blackbird 6071
 S Chisum 6175
 Bowman Zuni Y69 X P23
 Sitz Upward 307R
 Marcys Erica 393
 G D A R Oscar 734
 Marcys Stacked Lady 54-3

SALE DAY DATA	
SALE WT	RE
SC	

BW	205 WT	IND	CED	BW	WW	MILK	YW	MARB	RE
76	681	EPDs	9	0.5	60	34	111	2.43	12

Calving Ease: ** **Dam's Production: 2@105**

Should work on heifers.

101 M DIAMOND 21 UPROAR 175-1

DOB: 03/25/21 REG: 20250000 TAT: 1751

Bruin Uproar 0070
Bowman Uproar 608
 Bowman Zuni B53xY69
 S Rainmaker 110
M Diamond Enchantress 365
 M Diamond Enchantress 271

Sitz Upward 307R
 Falcon Blackbird 6071
 S Chisum 6175
 Bowman Zuni Y69 X P23
 S Rainmaker 9216
 S Cora 949
 Redland Emblazon 2134
 G K A F Enchantress 2056

SALE DAY DATA	
SALE WT	RE
SC	

BW	205 WT	IND	CED	BW	WW	MILK	YW	MARB	RE
100	696	EPDs	1	3.1	66	30	119	2.16	12.2

Calving Ease: **Dam's Production: 5@100**

One of the younger calves in sale but he has no shortage of performance. This bull has continued to grow at a very fast pace catching up to and surpassing many of the older bulls. He is maturing into a very attractive bull with plenty of muscle and a good barrel.

102 M DIAMOND 21 LOGO 162-1

DOB: 03/09/21 REG: 20249998 TAT: 1621

SITZ Logo 12964
JCH Logo 8017
 JCH Beauty 6287
 S Cornerstone 607
M Diamond Blackcap Lady 789
 M Diamond Blackcap Lady 984

Sitz Tebow 11860
 SITZ Shauna 3152
 HF Upgrade 34Z
 JCH Beauty 2244
 S Whitlock 179
 S Blossom 0278
 Sitz 4 Aces 4551
 Ox Bow Blackcap Lady 156

SALE DAY DATA	
SALE WT	RE
SC	

BW	205 WT	IND	CED	BW	WW	MILK	YW	MARB	RE
80	730	EPDs	9	0.6	76	26	122	3.38	13.4

Calving Ease: ** **Dam's Production: 1@110**

Another younger bull who is a second cycle calf out of a first calf heifer. Only the really good bulls out of this group make the sale. His Dam is an extremely feminine female who demands your attention. She moved up in her cycle after her first calf and is bred back AI. This Logo grandson flat out grew and boasts a weaning ratio of 110. He continues to grow and will catch your eye on sale day.

YEARLING BULLS

103 LISCO JUSTIFIED 159

DOB: 02/22/21 REG: 20259600 TAT: 159

Connealy Judgment
KG Justified 3023

KG Miss Magic 1443

Sitz 4 Aces 4551

Lisco Ellen 438

Lisco Ellen 757

Connealy Consensus 7229
 Entrine of Conanga 9876

Sitz Wisdom 481T
 KG Miss Magic 3528

Jauer 353 Traveler 589 27
 Sitz Pride 2561

Baldrige Nebraska 901
 LA Ellen 908

SALE DAY DATA

SALE	WT
SC	

BW	205 WT	IND	CED	BW	WW	MILK	YW	MARB	RE
87	755	EPDs	4	1.4	67	27	119	3.77	11.7

Calving Ease:

Dam's Production: 6@103

A deep ribbed stout made Justified x 4 Aces.

104 LISCO COALITION 188

DOB: 02/25/21 REG: 20259614 TAT: 188

HF Syndicate 213Z
U-2 Coalition 206C

U2 Erelite 109Z

S Summit 956

Lisco Ethelda 5110

Lisco Ethelda 364

Connealy Consensus 7229
 HF Miss Blackcap 27R

Young Dale Xclusive 25X
 U-2 Erelite 1X

GDAR Game Day 449
 S Pride Anna 709

S Chisum 6175
 Lisco Ethelda 615

SALE DAY DATA

SALE	WT
SC	

BW	205 WT	IND	CED	BW	WW	MILK	YW	MARB	RE
86	645	EPDs	6	1.5	53	25	101	3.17	12.2

Calving Ease:

Dam's Production: 5@102

You will really like the females out of these Coalition x Summit bred bulls. Strong maternal with solid performance.

105 M DIAMOND COALITION 1061

DOB: 03/05/21 REG: 20258282 TAT: 1061

HF Syndicate 213Z
U-2 Coalition 206C

U2 Erelite 109Z

Big Rok Ole 450

M Diamond Pride 412

M Diamond Pride 408

Connealy Consensus 7229
 HF Miss Blackcap 27R

Young Dale Xclusive 25X
 U-2 Erelite 1X

G D A R Traveler 044
 Big Rok Heather Lass 152

Redland Emblazon 2134
 M Diamond Pride 285

SALE DAY DATA

SALE	WT
SC	

BW	205 WT	IND	CED	BW	WW	MILK	YW	MARB	RE
96	600	EPDs	4	2.5	47	28	93	2.96	13.2

Calving Ease:

Dam's Production: 7@98

Another thick butted Coalition son. His mother is a 10 year old, moderate framed, easy doing cow with and exceptional udder.

106 M DIAMOND BUSINESSMAN 1041

DOB: 03/05/21 REG: 20258281 TAT: 1041

Connealy Capitalist 028
M Diamond Businessman 727

S Gloria 1194

Marcys 07 Broadband 1-7

M Diamond Blackcap Mary 792

Baldrige Blackcap Mary N92

S A V Final Answer 0035
 Prides Pita of Conanga 8821

GDAR Game Day 449
 S Gloria 464

Kahn Broadband R A 94L
 Schurrtop 9447 C968

Sitz Alliance 6595
 Baldrige Blackcap Mary 145K

SALE DAY DATA

SALE	WT
SC	

BW	205 WT	IND	CED	BW	WW	MILK	YW	MARB	RE
71	646	EPDs	15	-1.3	58	28	100	2.61	13.9

Calving Ease: **

Dam's Production: 7@100

Make all the kids or grandkids basketball games using this bull on your heifers!

107 M DIAMOND BOARDWALK 201

DOB: 02/22/21 REG: 20258269 TAT: 201

Coleman Bravo 6313
U2 Boardwalk 407G

U-2 Ms Morrison 259Z

Marcys Scale Breaker N Plus

M Diamond Beauty 408

G K A F Beauty 4161

Coleman Charlo 0256
 Coleman Donna 714

Young Dale Xclusive 25X
 U-2 Ms Morrison 134X

Marcys Scale Crusher
 Marcys Treasure 227

Vermilion Dateline 7078
 V D A R Beauty 5061

SALE DAY DATA

SALE	WT
SC	

BW	205 WT	IND	CED	BW	WW	MILK	YW	MARB	RE
73	600	EPDs	7	0.9	57	20	104	3.6	12.3

Calving Ease: **

Dam's Production: 2@101

This bull will work well on first calf heifers

108 M DIAMOND UPROAR 1291

DOB: 3/19/21 REG: 626614074 TAT: 1291

Bruin Uproar 0070
Bowman Uproar 608

Bowman Zuni B53xY69

Baldrige Conductor C794

M Diamond Erica 928

Marcys 14 Erica 98-4

Sitz Upward 307R
 Falcon Blackbird 6071

S Chisum 6175
 Bowman Zuni Y69 X P23

Baldrige Waylon W34
 Baldrige Forever Lady T269

Sitz 4 Aces 4551
 Marcys Erica 72-1

SALE DAY DATA

SALE	WT
SC	

BW	205 WT	IND	CED	BW	WW	MILK	YW	MARB	RE
78	565	EPDs							

Calving Ease: *

Dam's Production: @

A younger born heifer bull. Very structurally sound and good on his feet.

YEARLING BULLS

109 LISCO COALITION 145

DOB: 02/21/21 REG: 20259589 TAT: 145

HF Syndicate 213Z
U-2 Coalition 206C
 U2 Erelite 109Z
 S Summit 956
Lisco Pride 7123
 Marcys 15 Pride 24-5

Connealy Consensus 7229
 HF Miss Blackcap 27R
 Young Dale Xclusive 25X
 U-2 Erelite 1X
 GDAR Game Day 449
 S Pride Anna 709
 S A V Final Answer 0035
 Marcys 13 Pride 78-3

SALE DAY DATA	
SALE WT	
SC	

BW	205 WT	IND	CED	BW	WW	MILK	YW	MARB	RE
86	724	EPDs	8	1.1	63	27	119	2.56	13.1

Calving Ease: * **Dam's Production: 3@106**

Out of a perfect uddered Summit that should be a pathfinder. Should work on larger heifers.

110 LISCO CORNERSTONE 161

DOB: 02/20/21 REG: 20259601 TAT: 161

S Whitlock 179
S Cornerstone 607
 S Blossom 0278
 HA Cowboy Up 5405
Lisco Jamie 863
 Lisco Jamie 208

S Chisum 6175
 S Pride Anna 709
 Shipwheel Chinook
 S Blossom 8378
 HA Outside 3008
 HA Blackcap Lady 1602
 Marcys 07 Broadband 1-7
 L A Jamie 750 A

SALE DAY DATA	
SALE WT	
SC	

BW	205 WT	IND	CED	BW	WW	MILK	YW	MARB	RE
85	680	EPDs	5	1.5	70	27	118	3.35	11.4

Calving Ease: **Dam's Production: 2@99**

Balanced and complete in this Cornerstone's type and kind.

111 LISCO7102 COWBOY 164

DOB: 02/19/21 REG: 20259604 TAT: 164

HA Cowboy Up 5405
OCC Montana Cowboy 7102
 OCC Montana Dream 809
 S Chisum 255
Lisco Girl 8105
 Lisco Girl 639

HA Outside 3008
 HA Blackcap Lady 1602
 Sitz Upward 307R
 OCC Montana Dream 526
 S Chisum 6175
 S Blossom 0278
 Cole Creek Cedar Ridge 1V
 Lisco Girl 335

SALE DAY DATA	
SALE WT	
SC	

BW	205 WT	IND	CED	BW	WW	MILK	YW	MARB	RE
87	698	EPDs	5	2.7	71	22	124	3.3	12

Calving Ease: **Dam's Production: 2@106**

Out of a beautiful 255 daughter that should be pathfinder next year.

112 LISCO TAHOE 124

DOB: 02/18/21 REG: 20259584 TAT: 124

Tehama Upward Y238
Tehama Tahoe B767
 Tehama Mary Blackbird Y684
 S A V Final Answer 0035
Marcys 15 Pride 24-5
 Marcys 13 Pride 78-3

Sitz Upward 307R
 Tehama Elite Blackbird T735
 S A V Final Answer 0035
 Tehama Mary Blackbird T073
 Sitz Traveler 8180
 S A V Emulous 8145
 Baldridge Sledgehammer S621
 Marcys 09 1l2 16-6 147-9

SALE DAY DATA	
SALE WT	
SC	

BW	205 WT	IND	CED	BW	WW	MILK	YW	MARB	RE
80	638	EPDs	10	0	65	28	114	3.19	12

Calving Ease: ** **Dam's Production: 5@98**

Another Tahoe x Final Answer that should work on heifers with double digit CED.

113 M DIAMOND 21 XCLUSIVE 156-1

DOB: 03/09/21 REG: PENDING TAT: 1561

Young Dale Knock Out 134U
Young Dale Xclusive 25X
 Young Dale Pollyanna 60Y
 Dryland Alliance 259
U2 Everblack Rose Bud 80Y
 DWAJO Rose Bud 1J

LaGrand MAF Antidote 5775
 Young Dale Erica 26N
 S A V Net Worth 4200
 Young Dale Pollyanna 22P
 T D M Alliance 904
 Dryland Tierra 725
 Everblack Masterplan 007
 Anders Rose 20G

SALE DAY DATA	
SALE WT	
SC	

BW	205 WT	IND	CED	BW	WW	MILK	YW	MARB	RE
ET-96	ET-630	EPDs		3.8	46	22	89		

Calving Ease: **Dam's Production: @**

A complete outcross pedigree who comes from the U2 Ranch in Canada that is known for producing 109Z and Coalition. This ET calf has a ton of bone and is square made. The females out of this mating should be tremendous. Here is great way to introduce new genetics.

114 LISCO COALITION 1003

DOB: 03/01/21 REG: 20259619 TAT: 1003

HF Syndicate 213Z
U-2 Coalition 206C
 U2 Erelite 109Z
 SITZ Logo 12964
Lisco Mary 773
 Lisco Mary 114

Connealy Consensus 7229
 HF Miss Blackcap 27R
 Young Dale Xclusive 25X
 U-2 Erelite 1X
 Sitz Tebow 11860
 SITZ Shauna 3152
 Connealy Front Page 0228
 Lisco Mary 823

SALE DAY DATA	
SALE WT	
SC	

BW	205 WT	IND	CED	BW	WW	MILK	YW	MARB	RE
75	672	EPDs	12	-0.8	61	23	106	2.63	11.3

Calving Ease: ** **Dam's Production: 3@102**

A sure fire heifer bull with balanced performance. Out of a n easy fleshing, moderate framed Logo daughter.

YEARLING BULLS

115 M DIAMOND 21 COALITION 72-1

DOB: 03/01/21 REG: 20250004 TAT: 721

HF Syndicate 213Z
U-2 Coalition 206C
 U2 Erelite 109Z
 S A V Final Answer 0035
M Diamond Duchess 254
 M Diamond Dutchess 528

Connealy Consensus 7229
 HF Miss Blackcap 27R
 Young Dale Xclusive 25X
 U-2 Erelite 1X
 Sitz Traveler 8180
 S A V Emulous 8145
 N Bar Emulation EXT
 Shanigan 567 of IDEAL215 385

SALE DAY DATA	
SALE WT	
SC	

BW	205 WT	IND	CED	BW	WW	MILK	YW	MARB	RE
77	649	EPDs	10	-0.7	56	25	102	3.51	13

Calving Ease: ** Dam's Production: 6@103

If you want maternal predictability, here is calf that will sire it. His Dam stems from the ET program and is a product of a very successful flush. This calf will sire problem free cattle with great maternal instinct that is too often overlooked.

116 M DIAMOND COALITION 1121

DOB: 3/6/21 REG: 626581255 TAT: 1121

HF Syndicate 213Z
U-2 Coalition 206C
 U2 Erelite 109Z
 Sitz 4 Aces 4551
Marcys 14 Erica 98-4
 Marcys Erica 72-1

Connealy Consensus 7229
 HF Miss Blackcap 27R
 Young Dale Xclusive 25X
 U-2 Erelite 1X
 Juauer 353 Traveler 589 27
 Sitz Pride 2561
 GDAR Oscar 734
 Marcys 03 Erica 113-3

SALE DAY DATA	
SALE WT	
SC	

BW	205 WT	IND	CED	BW	WW	MILK	YW	MARB	RE
83	635	EPDs						2.39	13.2

Calving Ease: * Dam's Production: @

A very complete made Coalition son out of a great cow we purchased from Marcy Cattle Company in 2017. This bull will raise some great daughters that will work in any herd. Foot fixer.

117 M DIAMOND CORNERSTONE 1131

DOB: 03/06/21 REG: 20258284 TAT: 1131

S Whitlock 179
S Cornerstone 607
 S Blossom 0278
 S Rainmaker 110
M Diamond Erica 1183
 M Diamond Erica 826

S Chisum 6175
 S Pride Anna 709
 Shipwheel Chinook
 S Blossom 8378
 S Rainmaker 9216
 S Cora 949
 O C C Great Plains 943G
 G Marcy Erica 118

SALE DAY DATA	
SALE WT	
SC	

BW	205 WT	IND	CED	BW	WW	MILK	YW	MARB	RE
88	604	EPDs	6	0.5	50	33	87	2.17	13

Calving Ease: Dam's Production: 6@99

This bulls pedigree is filled with great cows.

118 M DIAMOND 21 COALITION 160-1

DOB: 03/09/21 REG: 20249997 TAT: 1601

HF Syndicate 213Z
U-2 Coalition 206C
 U2 Erelite 109Z
 S Cornerstone 607
M Diamond Ethelda E 538
 Marcys 09 Ethelda E 141-9

Connealy Consensus 7229
 HF Miss Blackcap 27R
 Young Dale Xclusive 25X
 U-2 Erelite 1X
 S Whitlock 179
 S Blossom 0278
 SIMONSON Front Page 7256
 Marcys 00 Ethelda E 133-0

SALE DAY DATA	
SALE WT	
SC	

BW	205 WT	IND	CED	BW	WW	MILK	YW	MARB	RE
84	681	EPDs	8	0.6	57	28	107	2.54	10.1

Calving Ease: * Dam's Production: 2@106

Another Coalition by Cornerstone mating that has proven to be very successful. This bull is a little behind because he was very quick maturing and weaned himself early to go chase cows on the other side of the fence in heat. He is out of another young cow that is on her way to becoming Pathfinder.

119 LISCO JUSTIFIED 154

DOB: 02/20/21 REG: 20259596 TAT: 154

Connealy Judgment
KG Justified 3023
 KG Miss Magic 1443
 S Chisum 0263
Lisco Queen Lady 211
 LA Queen Lady 409

Connealy Consensus 7229
 Entrine of Conanga 9876
 Sitz Wisdom 481T
 KG Miss Magic 3528
 S Chisum 6175
 S Spring Creek Lady 428
 Sitz Alliance 6595
 LA Queen Lady 105

SALE DAY DATA	
SALE WT	
SC	

BW	205 WT	IND	CED	BW	WW	MILK	YW	MARB	RE
82	632	EPDs	7	-0.6	47	30	83	3.01	11.1

Calving Ease: ** Dam's Production: 8@104

A moderate framed Justified son that should work on heifers with a negative Calving Ease Direct. Out of a productive 0263.

120 LISCO CORNERSTONE 105

DOB: 02/14/21 REG: 20259577 TAT: 105

S Whitlock 179
S Cornerstone 607
 S Blossom 0278
 HA Cowboy Up 5405
Lisco Miss Baros 803
 Lisco Miss Baros 5112

S Chisum 6175
 S Pride Anna 709
 Shipwheel Chinook
 S Blossom 8378
 HA Outside 3008
 HA Blackcap Lady 1602
 Cole Creek Cedar Ridge 1V
 Lisco Miss Baros 331

SALE DAY DATA	
SALE WT	
SC	

BW	205 WT	IND	CED	BW	WW	MILK	YW	MARB	RE
80	686	EPDs	7	1	67	27	116	2.73	11.3

Calving Ease: * Dam's Production: 2@103

A smooth made Cornerstone that should work on larger heifers.

30 YEARLING HEIFERS

PRICE _____ BUYER _____

PRICE _____ BUYER _____

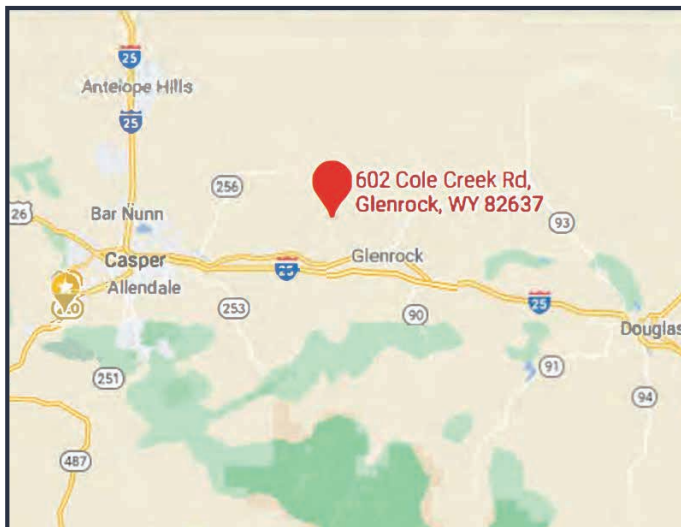
PRICE _____ BUYER _____

PRICE _____ BUYER _____

PRICE _____ BUYER _____

PRICE _____ BUYER _____

SALE LOCATION | M DIAMOND ANGUS RANCH 602 COLE CREEK RD | GLENROCK, WY 82637



LOCATION CAN NOT BE ACCESSED FROM I-25

PLEASE SEE DIRECTIONS BELOW

FROM CASPER

From the east side of Casper (Hat Six Rd) get on US Highway 20-26 (old Glenrock Highway). Head east on the old Glenrock Hwy for approximately 13 miles. Turn left on County Road 22 (aka Cole Creek Rd) and go north for 6 miles. Turn right at the "Boner" ranch sign and follow road into ranch and sale facility.

FROM GLENROCK

From the 4-way stop intersection in Glenrock head west towards Casper on 20-26 (old Glenrock Highway) for approximately 5.5 miles. Turn right on County Road 22 (aka Cole Creek Rd). Go north for 6 miles. Turn right at the "Boner" ranch sign and follow road into ranch and sale facility.

NOTE - You will pass the turn off to Brad and Laurie Boner's house at 3 miles - keep going north for 3 more miles.

DO NOT USE GOOGLE MAPS FOR DIRECTIONS. YOU WILL BE LOST!!



LISCO AND M DIAMOND ANGUS

Cattle BORN and BRED to with the DRIVE to THRIVE

LISCOANGUS.COM | MDIAMONDANGUS.COM



In Loving Memory of
CARROLL JAY “CORKY” LISCO

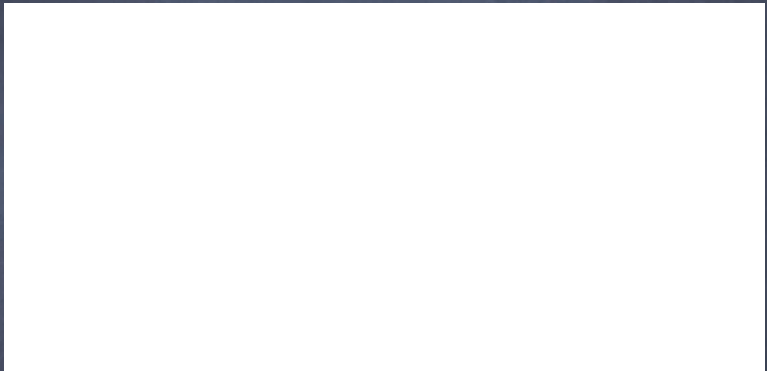
MAY 7, 1931 - OCTOBER 27, 2021



The Prayer

I PRAY YOU'LL BE OUR EYES
AND WATCH US WHERE WE GO
AND HELP US TO BE WISE
IN TIMES WHEN WE DON'T KNOW
LET THIS BE OUR PRAYER WHEN WE LOSE OUR WAY
LEAD US TO A PLACE
GUIDE US WITH GOD'S GRACE
TO A PLACE WHERE WE'LL BE SAFE
I PRAY WE'LL FIND YOUR LIGHT
AND HOLD IT IN OUR HEARTS
WHEN STARS GO OUT EACH NIGHT
REMIND US WHERE YOU ARE
LET THIS BE OUR PRAYER
WHEN SHADOWS FILL OUR DAY
LEAD US TO A PLACE
GUIDE US WITH GOD'S GRACE
GIVE US FAITH SO WE'LL BE SAFE





120 ANGUS Sired BY:

U-2 COALITION 206C | S WRANGLER 830 | TEHAMA TAHOE B767 | K G JUSTIFIED 3023 | M DIAMOND BUSINESSMAN

LISCO & M DIAMOND

30TH ANNUAL ANGUS BULL SALE



FRIDAY MARCH 25, 2022 | 1 PM | M DIAMOND ANGUS RANCH | GLENROCK, WY

