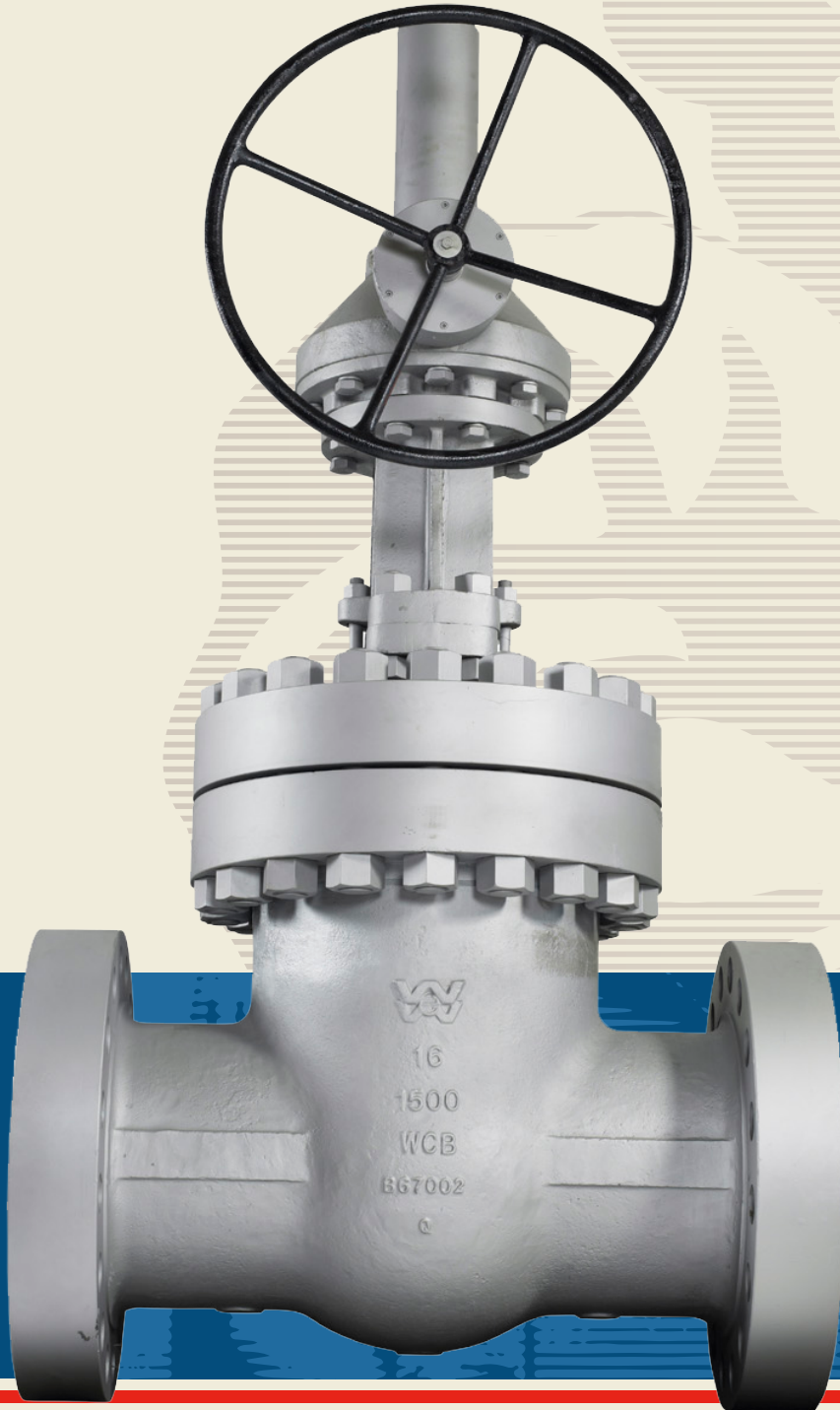




WILLIAMS

VALVE CORPORATION



PRODUCT LINE OVERVIEW

“Our goal is to produce high quality valves, fully traceable, at prices competitive in the global marketplace.”

A MESSAGE FROM THE PRESIDENT

Founded in 1918, William E. Williams Valve Corporation has continuously produced high quality valves for industrial and commercial applications including: oil refining, chemical processing, power generation, mining, paper, pharmaceutical processes, as well as, commercial and military shipbuilding.

Product improvements exceeding the latest environmental standards are constantly being implemented. Recently, we initiated a totally contained bonnet gasket design, which, with our standard stem packing, exceeds most fugitive emission requirements.

Williams' valves are designed, manufactured and tested to meet and exceed all applicable specifications to which they are constructed. Our goal is to produce high quality valves, fully traceable, at prices competitive in the global marketplace deliveries to match the “just in time” requirements of today's business world. In order to accomplish this goal, we maintain large inventories of finished products to support our distribution network.

All products are completely traceable to chemical, physical and pressure test records. Additional non-destructive testing is offered when specified.

We have years of experience working on special requirements: electric, hydraulic or pneumatic automation, gear operators emergency shut-off valves, soft seats and discs, by-pass valve installations and extended bonnets.

We believe that William E. Williams has a record of quality equal to or better than any in the valve industry. We are a privately owned company whose accomplishments have been achieved by the dedication and commitment of our employees to provide a standard of excellence in all our products for you, our present and future customers.

This condensed catalog is intended to provide an overview of our products. Detailed drawings are available in several formats. We appreciate your business and want to be your primary valve source.

Sincerely,



Nick Sherman
President



WILLIAMS PROFILE

Rugged Reliable Valves since 1918

LOCATIONS:

HEAD OFFICE: Long Island City, NY

TEXAS BRANCH: Houston, TX

CARBON STEEL GGC & BALL: Dafeng, China

STAINLESS & ALLOY GGC: Busan, Korea

DOMESTIC & NAVY PRODUCTS: LIC, NY

PRODUCT LINE:

- Cast & Forged Steel Gate, Globe, & Check Valves
- Forged Trunnion mounted Ball Valves
- Marine Valves for Commercial Vessels
- 100% made in the USA Valves for US Navy
- API-6D Pipeline Slab and Expanding Gate Valves
- Cast & Forged Stainless and Alloy Steel Valves for corrosive service
- Pressure seal bonneted valves for power and high-pressure applications
- Emergency Shutoff Valves for Tanks and Terminals
- Cryogenic service valves with extended bonnets

TABLE OF CONTENTS

- **Scope Size and Class** 4
- **Ball Valve Products** 5
- **Gate Valve Products** 7
- **Globe Valve Products** 10
- **Check Valve Products** 13
- **Specialty Valve Products** 15



Industry leading inventory of Stainless Steel GGC in Houston



Manufacturing and testing at our Williams' New York Location



6D

SCOPE SIZE AND CLASS

VALVE TYPE	ASME CLASS	SIZE																								
		0.50	0.75	1.0	1.5	2	3	3	4	5	6	8	10	12	14	16	18	20	22	24	26	30	36	42	48	60
BB GATE	150	✓	✓	✓	✓	✓	✓	✓	✓	✓	✓	✓	✓	✓	✓	✓	✓	✓	✓	✓	✓	✓	✓	✓	✓	✓
	300	✓	✓	✓	✓	✓	✓	✓	✓	✓	✓	✓	✓	✓	✓	✓	✓	✓	✓	✓	✓	✓	✓	✓	✓	✓
	600	✓	✓	✓	✓	✓	✓	✓	✓	✓	✓	✓	✓	✓	✓	✓	✓	✓	✓	✓	✓	✓	✓	✓	✓	✓
	800	✓	✓	✓	✓	✓	✓	✓	✓	✓	✓	✓	✓	✓	✓	✓	✓	✓	✓	✓	✓	✓	✓	✓	✓	✓
	900	✓	✓	✓	✓	✓	✓	✓	✓	✓	✓	✓	✓	✓	✓	✓	✓	✓	✓	✓	✓	✓	✓	✓	✓	✓
	1500	✓	✓	✓	✓	✓	✓	✓	✓	✓	✓	✓	✓	✓	✓	✓	✓	✓	✓	✓	✓	✓	✓	✓	✓	✓
	2500	✓	✓	✓	✓	✓	✓	✓	✓	✓	✓	✓	✓	✓	✓	✓	✓	✓	✓	✓	✓	✓	✓	✓	✓	✓
BB GLOBE	150	✓	✓	✓	✓	✓	✓	✓	✓	✓	✓	✓	✓	✓	✓	✓	✓	✓	✓	✓	✓	✓	✓	✓	✓	
	300	✓	✓	✓	✓	✓	✓	✓	✓	✓	✓	✓	✓	✓	✓	✓	✓	✓	✓	✓	✓	✓	✓	✓	✓	
	600	✓	✓	✓	✓	✓	✓	✓	✓	✓	✓	✓	✓	✓	✓	✓	✓	✓	✓	✓	✓	✓	✓	✓	✓	
	800	✓	✓	✓	✓	✓	✓	✓	✓	✓	✓	✓	✓	✓	✓	✓	✓	✓	✓	✓	✓	✓	✓	✓	✓	
	900	✓	✓	✓	✓	✓	✓	✓	✓	✓	✓	✓	✓	✓	✓	✓	✓	✓	✓	✓	✓	✓	✓	✓	✓	
	1500	✓	✓	✓	✓	✓	✓	✓	✓	✓	✓	✓	✓	✓	✓	✓	✓	✓	✓	✓	✓	✓	✓	✓	✓	
	2500	✓	✓	✓	✓	✓	✓	✓	✓	✓	✓	✓	✓	✓	✓	✓	✓	✓	✓	✓	✓	✓	✓	✓	✓	
BB CHECK	150	✓	✓	✓	✓	✓	✓	✓	✓	✓	✓	✓	✓	✓	✓	✓	✓	✓	✓	✓	✓	✓	✓	✓	✓	
	300	✓	✓	✓	✓	✓	✓	✓	✓	✓	✓	✓	✓	✓	✓	✓	✓	✓	✓	✓	✓	✓	✓	✓	✓	
	600	✓	✓	✓	✓	✓	✓	✓	✓	✓	✓	✓	✓	✓	✓	✓	✓	✓	✓	✓	✓	✓	✓	✓	✓	
	800	✓	✓	✓	✓	✓	✓	✓	✓	✓	✓	✓	✓	✓	✓	✓	✓	✓	✓	✓	✓	✓	✓	✓	✓	
	900	✓	✓	✓	✓	✓	✓	✓	✓	✓	✓	✓	✓	✓	✓	✓	✓	✓	✓	✓	✓	✓	✓	✓	✓	
	1500	✓	✓	✓	✓	✓	✓	✓	✓	✓	✓	✓	✓	✓	✓	✓	✓	✓	✓	✓	✓	✓	✓	✓	✓	
	2500	✓	✓	✓	✓	✓	✓	✓	✓	✓	✓	✓	✓	✓	✓	✓	✓	✓	✓	✓	✓	✓	✓	✓	✓	
API-608 FLOATING BALL	150			✓	✓	✓	✓	✓	✓	✓	✓	✓	✓	✓	✓	✓	✓	✓	✓	✓	✓	✓	✓	✓	✓	
	300			✓	✓	✓	✓	✓	✓	✓	✓	✓	✓	✓	✓	✓	✓	✓	✓	✓	✓	✓	✓	✓	✓	
	600			✓	✓	✓	✓	✓	✓	✓	✓	✓	✓	✓	✓	✓	✓	✓	✓	✓	✓	✓	✓	✓	✓	
	1500			✓	✓	✓	✓	✓	✓	✓	✓	✓	✓	✓	✓	✓	✓	✓	✓	✓	✓	✓	✓	✓	✓	
API-6D FORGED TRUNNION	150				✓	✓	✓	✓	✓	✓	✓	✓	✓	✓	✓	✓	✓	✓	✓	✓	✓	✓	✓	✓	✓	
	300				✓	✓	✓	✓	✓	✓	✓	✓	✓	✓	✓	✓	✓	✓	✓	✓	✓	✓	✓	✓	✓	
	600				✓	✓	✓	✓	✓	✓	✓	✓	✓	✓	✓	✓	✓	✓	✓	✓	✓	✓	✓	✓	✓	
	900				✓	✓	✓	✓	✓	✓	✓	✓	✓	✓	✓	✓	✓	✓	✓	✓	✓	✓	✓	✓	✓	
	1500				✓	✓	✓	✓	✓	✓	✓	✓	✓	✓	✓	✓	✓	✓	✓	✓	✓	✓	✓	✓	✓	
	2500				✓	✓	✓	✓	✓	✓	✓	✓	✓	✓	✓	✓	✓	✓	✓	✓	✓	✓	✓	✓	✓	
PRESSURE SEAL GGC	600				✓	✓	✓	✓	✓	✓	✓	✓	✓	✓	✓	✓	✓	✓	✓	✓	✓	✓	✓	✓	✓	
	900				✓	✓	✓	✓	✓	✓	✓	✓	✓	✓	✓	✓	✓	✓	✓	✓	✓	✓	✓	✓	✓	
	1500				✓	✓	✓	✓	✓	✓	✓	✓	✓	✓	✓	✓	✓	✓	✓	✓	✓	✓	✓	✓	✓	
	2500				✓	✓	✓	✓	✓	✓	✓	✓	✓	✓	✓	✓	✓	✓	✓	✓	✓	✓	✓	✓	✓	
API 6D SLAB/CHECK	150				✓	✓	✓	✓	✓	✓	✓	✓	✓	✓	✓	✓	✓	✓	✓	✓	✓	✓	✓	✓	✓	
	300				✓	✓	✓	✓	✓	✓	✓	✓	✓	✓	✓	✓	✓	✓	✓	✓	✓	✓	✓	✓	✓	
	600				✓	✓	✓	✓	✓	✓	✓	✓	✓	✓	✓	✓	✓	✓	✓	✓	✓	✓	✓	✓	✓	
	900				✓	✓	✓	✓	✓	✓	✓	✓	✓	✓	✓	✓	✓	✓	✓	✓	✓	✓	✓	✓	✓	

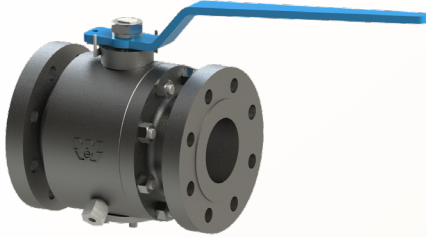
- For valves larger than 42" CL150 and 24" CL600 wall thicknesses will be per ASME B16.34
- API-602 available in Bolted and Welded Bonnet

Designs:

- API-603 / 600
- ASME B16.34 / API-594
- API-600
- API-594
- ASME B16.34 / API-623
- API-602
- API-623



TRUNNION MOUNTED BALL VALVE 2 PC BODY



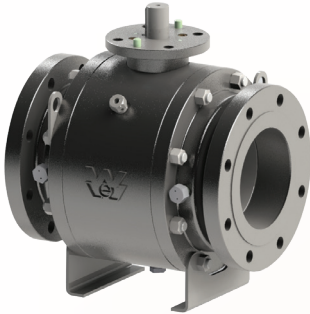
FEATURES

Size: 2" – 4"
 Class: ASME 150-300-600
 Two Piece Forged Steel Body
 Trunnion Mounted Ball, Full & Reduced Bore
 Anti-Static Device
 Blow-out Proof Stem
 Fire Safe Design
 Centre Cavity Emergency sealant injection port
 Low Emission
 DB & B

SPECIFICATIONS

Design: ASME B16.34/API 6D
 Face to Face: API 6D
 End Flange: ASME B16.5
 BW End: ASME B16.25
 Test: API 6D
 Fire Safe Test: API 6FA
 NACE MR0175
 DIB Optional

TRUNNION MOUNTED BALL VALVE 3 PC BODY



FEATURES

Size: 2" – 56"
 Class: ASME 150-300-600-900-1500-2500
 Three Piece Forged Steel Body
 Trunnion Mounted Ball, Full & Reduced Bore
 Anti-Static Device
 Blow-out Proof Stem
 Fire Safe Design
 Emergency Sealant Injector (6" & Larger)
 Low Emission
 DB & B

SPECIFICATIONS

Design: ASME B16.34/API 6D
 Face to Face: API 6D
 End Flange: ASME B16.5
 BW End: ASME B16.25
 Test: API 6D
 Fire Safe Test: API 6FA
 NACE MR0175
 DIB Optional

WELDED BODY BALL VALVE



FEATURES

Size: 2" – 48"
 Class: ASME 150-300-600-900-1500-2500
 Fully Welded Forged Steel Body
 Trunnion Mounted Ball, Full & Reduced Bore
 Anti-Static Device
 Blow-out Proof Stem
 Double Block and Bleed
 Fire Safe Design
 Emergency Sealant Injector (6" & Larger)
 Lifting Lugs (8" & Larger)
 Low Emission
 DB & B

SPECIFICATIONS

Design: ASME B16.34/API 6D
 Face to Face: API 6D
 End Flange: ASME B16.5
 BW End: ASME B16.25
 Fire Safe Test: API 6FA
 NACE MR0175
 DIB Optional

METAL SEATED BALL VALVE



FEATURES

Size: 2" – 24"
 Class: ASME 150-300-600-900-1500-2500
 Three Piece Forged Steel Body
 Trunnion Mounted Ball
 Full & Reduced Bore
 Anti-Static Device
 Blow-out Proof Stem
 Fire Safe Design
 Low Emission
 DB & B

SPECIFICATIONS

Design: ASME B16.34/API 6D
 Face to Face: API 6D
 End Flange: ASME B16.5
 BW End: ASME B16.25
 Test: API 6D
 Fire Safe Test: API 607/API 6FA
 Higher temperature optional
 NACE MR0175

FLOATING BALL VALVE 2 PC BODY



FEATURES

Size: 1" – 12"
 Class: ASME 150-300
 Two Pieces Cast Steel Body
 Floating Ball, Full & Reduced Bore
 Anti-Static Device
 Blow-out Proof Stem
 Fire Safe Design
 Low Emission

SPECIFICATIONS

Design: ASME B16.34/API 608
 Face to Face: ASME B16.10
 End Flange: ASME B16.5
 BW End: ASME B16.25
 Test: API 598
 Fire Safe Test: API 607
 NACE MR0175

CAST TRUNNION MOUNTED BALL VALVE



FEATURES

Size: 2" – 24"
 Class: ASME 150-300-600
 Two Piece Cast Steel Body
 Trunnion Mounted Ball
 Full & Reduced Bore, Anti-Static Device
 Blow-out Proof Stem
 Fire Safe Design
 Emergency Sealant Injector (6' & Larger)
 Low Emission
 DB & B

SPECIFICATIONS

Design: ASME B16.34/API 6D
 Face to Face: API 6D
 End Flange: ASME B16.5
 BW End: ASME B16.25
 Test: API 6D
 Fire Safe Test: API 6FA
 NACE MR0175
 DIB Optional

TOP ENTRY BALL VALVE



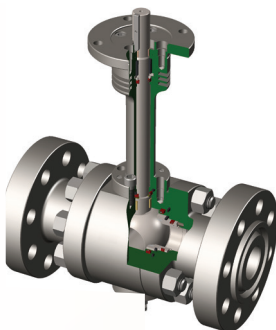
FEATURES

Size: 2" – 48"
 Class: ASME 150-300-600-900-1500-2500
 1 Piece Forged Steel Body
 Trunnion Mounted Ball, Full & Reduced Bore
 Anti-Static Device
 Blow-out Proof Stem
 Double Block and Bleed
 Fire Safe Design
 Emergency Sealant Injector (6" & Larger)
 Vent Valve (6" & Larger)
 Lifting Lugs (8" & Larger)
 Low Emission

SPECIFICATIONS

Design: ASME B16.34/API 6D
 Face to Face: API 6D
 End Flange: ASME B16.5
 BW End: ASME B16.25
 Test: API 6D
 Fire Safe Test: API 6FA
 NACE MR0175

CRYOGENIC SERVICE BALL VALVE



FEATURES

Size: 1/2" – 24"
 Class: ASME 150-300-600-900
 Cryogenic Service to -196°C
 Forged or Cast Steel Body
 Floating & Trunnion Mounted Ball
 Full & Reduced Bore
 Extended Bonnet, Lip Seal
 Cavity Pressure Relief
 Anti-Static Device
 Blow-out Proof Stem
 Fire Safe Design

SPECIFICATIONS

Design: ASME B16.34/API 608/MSS SP-134
 Face to Face: API 6D
 End Flange: ASME B16.5
 BW End: ASME B16.25
 Test: API 6D
 Fire Safe Test: API 6FA
 NACE MR0175



BOLTED BONNET WEDGE GATE



FEATURES

Size: 2" – 60"
 ASME Class: 150-300-600-900-1500-2500
 Cast Steel Bolted Bonnet, OS&Y Rising Stem
 Full Port to API-600
 API 624 Certified Graphite Packing
 Ground and Lapped Renewable Seat rings
 Semi-metallic bonnet gasket (CL150-300)
 Ring Joint bonnet gasket (CL600-900-1500-2500)
 Fully Guided discs
 End Connections: RF, RTJ, BW

SPECIFICATIONS

Design: API-600 / ASME B16.34
 Face to Face: ASME B16.10
 End Flange: ASME B16.5 / B16.47
 BW End: ASME B16.25
 Test: API-598
 NACE: MR0175 / MR0103
 Fugitive Emissions: API-622 / API-624
 Bosses for bypasses & Drains
 Available Materials: WCB-LCC-WC6-WC9-C12-316SS-CD3MN

CORROSION RESISTANT BOLTED BONNET WEDGE GATE



FEATURES

Size: 2" – 36"
 ASME Class: 150-300-600-900-1500-2500
 Cast Bolted Bonnet, OS&Y Rising Stem
 API 624 Certified Graphite Packing
 Ground and Lapped Renewable Seat rings
 Semi-metallic bonnet gasket
 Fully Guided discs
 Teflon Packing Optional
 End Connections: RF, RTJ, BW

SPECIFICATIONS

Design: API-603 / ASME B16.34
 Face to Face: ASME B16.10
 End Flange: ASME B16.5 / B16.47
 BW End: ASME B16.25
 Test: API-598
 Fugitive Emissions: API-622 / API-624
 Bosses for bypasses & Drains
 Available materials: 304SS-316SS-347SS-CD3MN-Inconel 625-Monel 400-Alloy 20
 NACE by request

API-6D THROUGH CONDUIT GATE



FEATURES

Size: 2" – 42"
 ASME Class: 150-300-600-900-1500
 Cast Steel Bolted Bonnet, OS&Y Rising Stem
 Adjustable Low Emission Graphite Packing
 3 Mil ENP coated seat rings / slab / stem
 Slab & Expanding Styles
 Through conduit full bore for pigs & Scrapers
 Double Block and Bleed (Optional DIB)
 Independent Coil seat springs
 End Connections: RF, RTJ, BW

SPECIFICATIONS

Design: API-6D
 Face to Face: API-6D
 End Flange: ASME B16.5 / B16.47
 BW End: ASME B16.25
 Test: API-6D
 Fugitive Emissions: API-622
 Bosses for bypasses & Drains
 Available materials: WCC-WCB-LCC-316SS
 Firesafe API-6FA
 NACE MR-0175

PRESSURE SEAL BONNET WEDGE GATE & PARALLEL SLIDE GATE



FEATURES

Size: 2" – 36"
 ASME Class: 600-900-1500-2500
 Cast Steel PS Bonnet, OS&Y Rising Stem
 Low Emission Graphite Packing to API-622
 Ground and Lapped Renewable Seat rings
 Graphoil or Metal PS Gasket
 Fully Guided discs
 Parallel Slide – Position Seated
 Wedge Gate – Torque Seated
 End Connections: RF, RTJ, BW

SPECIFICATIONS

Design: ASME B16.34 / MSS-SP144 / API-600
 Face to Face: ASME B16.10
 End Flange: ASME B16.5 / B16.47
 BW End: ASME B16.25
 Test: API-598
 Fugitive Emissions: API-622 / API-624
 Bosses for bypasses & drains
 Available materials: WCB-LCC-WC6-WC9-C12-316SS
 NACE by request

FORGED STEEL BOLTED BONNET WEDGE GATE



FEATURES

Size: 0.5" – 3"
ASME Class: 150-300-600-800-900-1500-2500
Forged Steel Bolted Bonnet, OS&Y Rising Stem
Ground and lapped pressed in Seat Rings
Spiral Wound Bonnet gasket
Full Port or Standard port
API 624 Certified Graphite Packing
NACE MR0175 / MR0103
Options: Extended Bonnet / Extended Body
End Connections: RF, RTJ, BW, SW, Threaded

SPECIFICATIONS

Design: API-602
Face to Face: MFG standard
End Flange: ASME B16.5
BW End: ASME B16.25
SW ends to ASME B16.11
Screwed end to ASME B1.20.1
Test: API-598
Fugitive Emissions: API-622 / API-624
Available materials: A105-LF2-F5-F9-F11-F22-F91-304SS-316SS-317SS-347SS-F51-F53-Inconel-Monel

FORGED STEEL WELDED BONNET WEDGE GATE



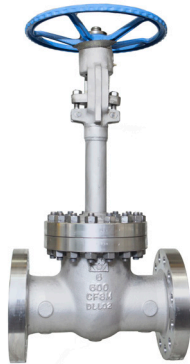
FEATURES

Size: 0.5" – 3"
ASME Class: 150-300-600-800-900-1500-2500
Forged Steel Welded Bonnet (Strength Weld)
Ground and lapped pressed in Seat Rings
Full Port or Standard port
OS&Y Rising Stem
API 624 Certified Graphite Packing
NACE MR0175
Options: Extended Bonnet / Extended Body
End Connections: RF, RTJ, BW, SW, Threaded

SPECIFICATIONS

Design: API-602
Face to Face: MFG standard
End Flange: ASME B16.5
BW End: ASME B16.25
SW ends to ASME B16.11
Screwed end to ASME B1.20.1
Test: API-598
Fugitive Emissions: API-622 / API-624
Available materials: A105-LF2-F5-F9-F11-F22-F91-304SS-316SS-317SS-347SS-F51-F53-Inconel-Monel

CRYOGENIC CAST STEEL BOLTED BONNET WEDGE GATE



FEATURES

Size: 2" – 24"
ASME Class: 150-300-600-900-1500
Cast Steel Bolted Bonnet, OS&Y Rising Stem
Fully Guided discs
Spiral Wound bonnet gasket
Extended Bonnet, Equalization vent holes
Major components receive Cryogenic subzero conditioning before machining to ensure high quality standards for cryogenic service
End Connections: RF, RTJ, BW

SPECIFICATIONS

Design: API-603 / ASME B16.34
Face to Face: ASME B16.10
End Flange: ASME B16.5
BW End: ASME B16.25
Test: API-598 / MSS SP-134
Fugitive Emissions: API-622 / API-624
Available materials: 316SS
Optional: Cryogenic testing to ISO or BS code

CRYOGENIC FORGED STEEL BOLTED BONNET WEDGE GATE



FEATURES

Size: 0.5" – 2"
ASME Class: 150-300-600-800-900-1500
Forged body with one-piece extended bonnet
OS&Y Rising Stem
Low Emission Graphite Packing to API-622
Ground and lapped pressed in Seat Rings
Spiral Wound bonnet gasket
Extended Bonnet
Equalization vent holes
End Connections: RF, RTJ, BW, SW, Threaded

SPECIFICATIONS

Design: API-602
Face to Face: MFG standard
End Flange: ASME B16.5
BW End: ASME B16.25
SW ends to ASME B16.11
Screwed end to ASME B1.20.1
Test: API-598 / MSS SP-134
Fugitive Emissions: API-622 / API-624
Available materials: F316SS



CAST STEEL MARINE WEDGE GATE ABS TYPE APPROVED



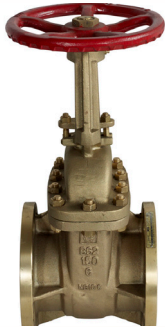
FEATURES

Size: 2" – 24"
 ASME Class: 150-300
 Bolted Bonnet
 Rising or Non-Rising Stem
 Fully Guided disc
 Calibrated position indicator
 Standard trim: Bronze or 13Cr/HF
 Graphoil Packing
 Adaptable for reach-rod systems
 End Connections: RF, BW

SPECIFICATIONS

Design: API600 / ASME B16.34
 Face to Face: ASME B16.10
 End Flange: ASME B16.5
 BW End: ASME B16.25
 Test: API-598
 Fugitive Emissions: API-622
 Bosses for bypasses & drains
 Available materials: WCB-316SS

BRONZE MARINE WEDGE GATE ABS TYPE APPROVED



FEATURES

Size: 2" – 12"
 ASME Class: 150
 Bolted Bonnet
 OS&Y or Non-Rising
 Fully Guided discs
 Calibrated position indicator
 Standard Bronze Trim
 Adaptable for reach-rod systems
 Integral backseat
 End Connections: RF

SPECIFICATIONS

Design: ASME B16.24
 Face to Face: MFG standard
 End Flange: ASME B16.5
 Test: MSS SP-80
 Available materials: B61-B62-Monel-Titanium

MIL-SPEC WEDGE GATE



FEATURES

Size: 1" – 12"
 ASME Class: 150-300
 Bolted Bonnet
 OS&Y
 Mil-Spec valves are special orders for U.S. government only
 Valves are made in the USA
 Shock & Vibe tested
 Connections: RF

SPECIFICATIONS

Design: ASME B16.34
 Face to Face: ASME B16.10
 End Flange: ASME B16.5
 BW End: ASME B16.25
 Test: API-598
 Bosses for bypasses & drains
 Available materials: Composition A, B, C, D & E
 Per MIL-V-18110F

BOLTED BONNET T-PAT & Y-PAT GLOBE



FEATURES

Size: 2" – 30"
 ASME Class: 150-300-600-900-1500-2500
 Cast Steel Bolted Bonnet, OS&Y Rising Stem
 API 624 Certified Graphite Packing
 Ground and Lapped Renewable Seat rings
 Semi-metallic bonnet gasket (CL150-300)
 Ring Joint bonnet gasket (CL600-900-1500-2500)
 Body Guided discs
 Optional Stop Check Feature
 End Connections: RF, RTJ, BW

SPECIFICATIONS

Design: API-623 / ASME B16.34
 Face to Face: ASME B16.10
 End Flange: ASME B16.5 / B16.47
 BW End: ASME B16.25
 Test: API-598
 NACE: MR0175 / MR0103
 Fugitive Emissions: API-622 / API-624
 Bosses for bypasses & Drains
 Available Materials: WCB-LCC-WC6-WC9-C12-316SS-CD3MN

CORROSION RESISTANT BOLTED BONNET GLOBE



FEATURES

Size: 2" – 30"
 ASME Class: 150-300-600-900-1500-2500
 Cast Bolted Bonnet, OS&Y Rising Stem
 API 624 Certified Graphite Packing
 Ground and Lapped Renewable Seat rings
 Semi-metallic bonnet gasket
 Fully Guided discs
 Optional Teflon Packing
 End Connections: RF, RTJ, BW

SPECIFICATIONS

Design: ASME B16.34
 Face to Face: ASME B16.10
 End Flange: ASME B16.5 / B16.47
 BW End: ASME B16.25
 Test: API-598
 Fugitive Emissions: API-622 / API-624
 Bosses for bypasses & Drains
 Available materials: 304SS-316SS-347SS-CD3MN-Inconel 625-Monel 400-Alloy 20
 NACE by request

PRESSURE SEAL BONNET T-PAT & Y-PAT GLOBE



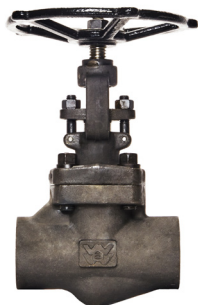
FEATURES

Size: 2" – 24"
 ASME Class: 600-900-1500-2500
 Cast Steel PS Bonnet, OS&Y Rising Stem
 Ground and Lapped Renewable Seat rings
 Body Guided Discs
 Graphoil or Metal PS Gasket
 Non-rotating stem
 Low Emission Graphite Packing to API-622
 Optional Stop Check Feature
 End Connections: RF, RTJ, BW

SPECIFICATIONS

Design: ASME B16.34 / MSS-SP144
 Face to Face: ASME B16.10
 End Flange: ASME B16.5 / B16.47
 BW End: ASME B16.25
 Test: API-598
 Fugitive Emissions: API-622 / API-624
 Bosses for bypasses & drains
 Available materials: WCB-LCC-WC6-WC9-C12-316SS
 NACE by request

FORGED STEEL BOLTED BONNET GLOBE



FEATURES

Size: 0.5" – 2"
 ASME Class: 150-300-600-800-900-1500-2500
 Forged Steel Bolted Bonnet, OS&Y Stem
 Ground and lapped pressed in Seat Rings
 Spiral Wound Bonnet gasket
 API 624 Certified Graphite Packing
 NACE MR0175 / MR0103
 Options: Extended Bonnet / Extended Body
 End Connections: RF, RTJ, BW, SW, Threaded

SPECIFICATIONS

Design: API-602
 Face to Face: MFG standard
 End Flange: ASME B16.5
 BW End: ASME B16.25
 SW ends to ASME B16.11
 Screwed end to ASME B1.20.1
 Test: API-598
 Fugitive Emissions: API-622 / API-624
 Available materials: A105-LF2-F5-F9-F11-F22-F91-304SS-316SS-317SS-347SS-F51-F53-Inconel-Monel



FORGED STEEL WELDED BONNET GLOBE



FEATURES

Size: 0.5" – 2"
 ASME Class: 150-300-600-800-900-1500-2500
 Forged Steel Welded Bonnet (Strength Weld)
 Ground and lapped pressed in Seat Rings
 OS&Y Rising Stem
 API 624 Certified Graphite Packing
 NACE MR0175 / MR0103
 Options: Extended Bonnet / Extended Body
 End Connections: RF, RTJ, BW, SW, Threaded

SPECIFICATIONS

Design: API-602
 Face to Face: MFG standard
 End Flange: ASME B16.5
 BW End: ASME B16.25
 SW ends to ASME B16.11
 Screwed end to ASME B1.20.1
 Test: API-598
 Fugitive Emissions: API-622 / API-624
 Available materials: A105-LF2-F5-F9-F11-F22-F91-304SS-316SS-317SS-347SS-F51-F53-Inconel-Monel

CRYOGENIC CAST STEEL BOLTED BONNET GLOBE



FEATURES

Size: 2" – 24"
 ASME Class: 150-300-600-900-1500
 Cast Steel Bolted Bonnet, OS&Y Rising Stem
 Fully Guided discs
 Spiral Wound bonnet gasket
 Extended Bonnet
 Major components receive Cryogenic subzero conditioning before machining to ensure high quality standards for cryogenic service
 End Connections: RF, RTJ, BW

SPECIFICATIONS

Design: ASME B16.34
 Face to Face: ASME B16.10
 End Flange: ASME B16.5
 BW End: ASME B16.25
 Test: API-598 / MSS SP-134
 Fugitive Emissions: API-622 / API-624
 Bosses for bypasses & Drains
 Available materials: 316SS
 Optional: Cryogenic testing to ISO or BS code

CRYOGENIC FORGED STEEL BOLTED BONNET GLOBE



FEATURES

Size: 0.5" – 2"
 ASME Class: 150-300-600-800-900-1500
 Forged body, one-piece extended bonnet
 OS&Y Rising Stem
 Low Emission Graphite Packing to API-622
 Ground and lapped pressed in Seat Rings
 Spiral Wound bonnet gasket
 Extended Bonnet
 End Connections: RF, RTJ, BW, SW, Threaded

SPECIFICATIONS

Design: API-602
 Face to Face: MFG standard
 End Flange: ASME B16.5
 BW End: ASME B16.25
 SW ends to ASME B16.11
 Screwed end to ASME B1.20.1
 Test: API-598 / MSS SP-134
 Fugitive Emissions: API-622 / API-624
 Available materials: F316SS

CAST STEEL MARINE T-PAT & ANGLE GLOBE - ABS TYPE APPROVED



FEATURES

Size: 2" – 16"
 ASME Class: 150
 Bolted Bonnet
 Rising Hand wheel
 Fully Guided disc
 Trim: Aluminum Bronze
 Graphoil Packing
 Stop Check Feature (Optional)
 End Connections: RF, BW

SPECIFICATIONS

Design: ASME B16.34
 Face to Face: ASME B16.10
 End Flange: ASME B16.5
 BW End: ASME B16.25
 Test: API-598
 Fugitive Emissions: API-622
 Bosses for bypasses & drains
 Available materials: WCB

BRONZE MARINE T-PAT & ANGLE GLOBE - ABS TYPE APPROVED



FEATURES

- Size: 1½" – 12"
- ASME Class: 150
- Bolted Bonnet
- Rising Hand wheel
- Trim: Bronze
- Optional Monel Trim
- Graphoil Packing
- Stop Check Feature (Optional)
- End Connections: RF

SPECIFICATIONS

- Design: ASME B16.24
- Face to Face: MFRS Std.
- End Flange: ASME B16.5
- Test: MSS SP-80
- Available materials: B62-B61 Bronze

MIL-SPEC T-PAT & ANGLE GLOBE



FEATURES

- Size: 2" – 12"
- ASME Class: 150-300-600
- Bolted Bonnet
- Mil-Spec valves are special orders for U.S. government only
- Valves are made in the USA
- Shock & Vibe tested
- End Connections: RF

SPECIFICATIONS

- Design: ASME B16.34
- Face to Face: ASME B16.10
- End Flange: ASME B16.5
- BW End: ASME B16.25
- Test: API-598
- Bosses for bypasses & drains
- Available materials: Composition A, B, & D
- Per MIL-V-22052



BOLTED BONNET SWING & PISTON CHECK



FEATURES

Size: 2" – 42"
 ASME Class: 150-300-600-900-1500-2500
 Cast Steel Bolted Cap
 Ground and Lapped Renewable Seat rings
 Semi-metallic bonnet gasket (CL150-300)
 Ring Joint bonnet gasket (CL600-900-1500-2500)
 Dual secured Disc Nut
 Anti-rotation pins
 End Connections: RF, RTJ, BW

SPECIFICATIONS

Design: API-594 / ASME B16.34
 Face to Face: ASME B16.10
 End Flange: ASME B16.5 / B16.47
 BW End: ASME B16.25
 Test: API-598
 Available Materials: WCB-LCC-WC6-WC9-C12-316SS-CD3MN
 NACE: MR0175 / MR0103

CORROSION RESISTANT BOLTED BONNET SWING CHECK



FEATURES

Size: 2" – 36"
 ASME Class: 150-300-600
 Cast Steel Bolted Cap
 Ground and Lapped Renewable Seat rings
 Semi-metallic bonnet gasket (CL150-300)
 Ring Joint bonnet gasket (CL600-900-1500-2500)
 Dual secured Disc Nut
 Anti-rotation pins
 End Connections: RF, RTJ, BW

SPECIFICATIONS

Design: ASME B16.34
 Face to Face: ASME B16.10
 End Flange: ASME B16.5 / B16.47
 BW End: ASME B16.25
 Test: API-598
 Available materials: 304SS-316SS-347SS-CD3MN-Inconel 625-Monel 400-Alloy 20
 NACE by request

PRESSURE SEAL BONNET SWING & TILTING DISK CHECK



FEATURES

Size: 2" – 30"
 ASME Class: 600-900-1500-2500
 Cast Steel Pressure Seal Cap
 Ground and Lapped Renewable Seat rings
 PS Gasket knock out holes
 Graphoil / Metal Bonnet gasket
 Swing check or Tilting Disc designs
 Optional live loaded draw bolts
 End Connections: RF, RTJ, BW

SPECIFICATIONS

Design: ASME B16.34 / MSS-SP-144 / API-600
 Face to Face: ASME B16.10
 End Flange: ASME B16.5 / B16.47
 BW End: ASME B16.25
 Test: API-598
 Available materials: WCB-LCC-WC6-WC9-C12-316SS
 NACE by request

THROUGH CONDUIT SWING CHECK



FEATURES

Size: 2" – 42"
 ASME Class: 150-300-600-900-1500
 Cast Steel Bolted Cap
 Semi-metallic bonnet gasket (CL150-300)
 Ring Joint bonnet gasket (CL600-900-1500-2500)
 Through conduit full bore for pigs & Scrapers
 Available in soft and metal seats
 Dual secured Disc Nut
 Anti-rotation pins
 End Connections: RF, RTJ, BW

SPECIFICATIONS

Design: API-6D
 Face to Face: ASME B16.10
 End Flange: ASME B16.5 / B16.47
 BW End: ASME B16.25
 Test: API-6D
 Available materials: WCC-WCB-LCC-316SS
 NACE by request

FORGED STEEL SWING, PISTON & BALL CHECK



FEATURES

Size: 0.5" – 2"
 ASME Class: 150-300-600-800-900-1500-2500
 Bolted Cap or Welded Cap (Strength Weld)
 Ground and lapped pressed in Seat Rings
 Spiral Wound Bonnet gasket
 Full Port or Standard port
 Standard 304SS Springs
 End Connections: RF, RTJ, BW, SW, Threaded

SPECIFICATIONS

Design: API-602
 Face to Face: MFG standard / ASME B16.10
 End Flange: ASME B16.5
 BW End: ASME B16.25
 SW ends to ASME B16.11
 Screwed end to ASME B1.20.1
 Test: API-598
 Available materials: A105-LF2-F5-F9-F11-F22-F91-304SS-316SS-317SS-347SS-F51-F53-Inconel-Monel
 NACE: MR0175 / MR0103

CRYOGENIC BOLTED BONNET CHECK



FEATURES

Size: 0.5" – 24"
 ASME Class: 150-300-600-900-1500
 Cast Steel & Forged steel options
 Ground and Lapped Renewable Seat Rings
 Spiral Wound bonnet gasket
 Full Port or Standard Port
 Major components receive Cryogenic subzero conditioning before machining to ensure high quality standards for cryogenic service
 End Connections: RF, RTJ, BW, SW, Threaded

SPECIFICATIONS

Design: ASME B16.34 / API-602
 Face to Face: ASME B16.10
 End Flange: ASME B16.5
 BW End: ASME B16.25
 Standard Test: API-598 / MSS SP-134
 Available materials: 316SS
 Optional: Cryogenic testing to ISO or BS code

MARINE SWING CHECK - ABS TYPE APPROVED



FEATURES

Size: 1.5" – 16"
 ASME Class: 150
 Bolted Cap
 Ground and Lapped Renewable Seat rings
 Semi-metallic bonnet gasket
 Dual secured Disc Nut
 Anti-rotation pins
 End Connections: RF

SPECIFICATIONS

Design: ASME B16.34 / ASME B16.24
 Face to Face: ASME B16.10 or MFG Std
 End Flange: ASME B16.5
 BW End: ASME B16.25
 Test: API-598-MSS SP-80
 Available materials: WCB-B61-B62
 Trims: Bronze-Aluminum Bronze-Monel

MIL-SPEC SWING CHECK



FEATURES

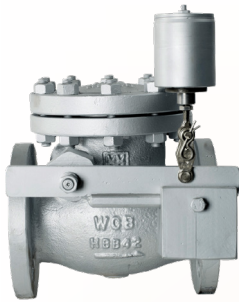
Size: ½" – 12"
 ASME CL: 150-300-600
 Bolted Cap
 Mil-Spec valves are special orders for U.S. government only
 Valves are made in the USA
 Shock & Vibe tested
 End Connections: RF

SPECIFICATIONS

Design: ASME B16.34
 Face to Face: ASME B16.10
 End Flange: ASME B16.5
 BW End: ASME B16.25
 Test: API-598
 Bosses for bypasses & drains
 Available materials: Group C, TYPE III, STYLE A
 Per MIL-V-18436F



EMERGENCY SHUT-OFF VALVES



FEATURES

Size: 2" – 30"
 Class: ASME 150-300-600-900-1500
 Bolted Bonnet
 Local and/or remote actuation
 Fire-Safe fusible link
 Back pressure ensures a tight seal between the disc and seat. Once closed, the valve can ONLY be reset manually as a safety feature
 End Connections: RF, RTJ, BW

SPECIFICATIONS

Design: API-594
 Face to Face: ASME B16.10
 End Flange: ASME B16.5
 BW End: ASME B16.25
 Test: API-598
 Available materials: WCB-LCC-WC6-WC9-CF8M

EMERGENCY SHUT-OFF VALVES – FULL PORT



FEATURES

Size: 2" – 30"
 Class: ASME 150-300-600-900-1500
 Bolted Bonnet, Through Conduit Full Port Body
 Local and/or remote actuation
 Fire-Safe fusible link
 Back pressure ensures a tight seal between the disc and seat. Once closed, the valve can ONLY be reset manually as a safety feature
 End Connections: RF, RTJ, BW

SPECIFICATIONS

Design: API-6D
 Face to Face: API-6D
 End Flange: ASME B16.5
 BW End: ASME B16.25
 Test: API-6D / API-598
 Available materials: WCB-LCC-WC6-WC9-CF8M



WILLIAMS

VALVE CORPORATION

WILLIAMS VALVE CORPORATION

38-52 Review Ave | Long Island City, NY 11101

Phone: 1.800.221.1115 | Fax: 718.729.5106 | Email: Wew@williamsvalve.com

WILLIAMSVALVE.COM