



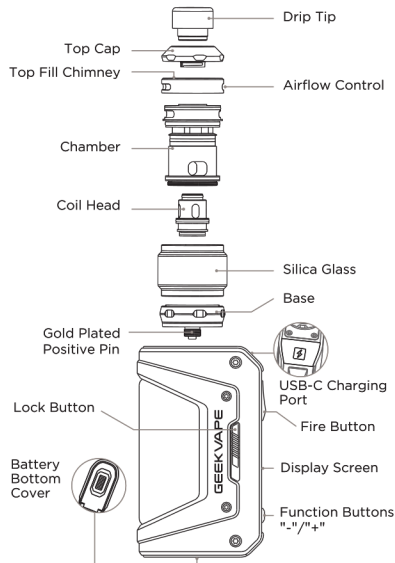
Aegis Legend 2 KIT  
User Manual

封面

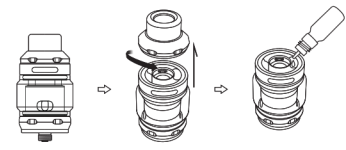
### Thank you for choosing GEEKVAPE

- \* For better user experience, please read the user manual before starting your vape journey.
- \* Please keep the user manual for future reference.

#### OVERVIEW

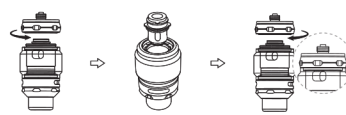


#### FILLING THE E-LIQUID



- Get the product.
- Turn the atomizer cap counter clock wise to lift it, opening the atomizer.
- Fill the pod with e-liquid through the fill port hole. (Do not overfill the tank to avoid any leakage.)
- Place back the top cap as shown in picture. (After filling, wait 5 minutes before using the device.)

#### REPLACE THE COIL



- Turn the atomizer base counterclockwise to remove it.
- Remove the base and replace the coil.
- Turn the atomizer base clockwise and place it back.

#### PRODUCT PARAMETERS

- Output power: 5W~200W
- Maximum output current: 45A
- Maximum output voltage: 12V
- Power display: Battery icon on the screen
- Charging port: Type-C Port
- Resistance of atomizer: 0.1 ohm - 3 ohm
- Battery specification: 7.4V, external double battery 18650
- Display screen: 1.08 inch, TFT color screen
- Operating temperature: 0°C~45°C
- Storage temperature: -20°C~60°C
- Relative humidity: 45%RH~75%RH
- Cooling mode: Natural cooling

#### INSTRUCTIONS

- Inserting battery cell:** The device flash "Geek vape" one time and then screen out when you inset battery cell.
- Turn on:** Press the Fire button 5 times in quick succession within 2s to turn on the device. (Enter the standby screen after the boot animation.)
- Turn off:** Press the Fire button 5 times in quick succession within 2s to turn off the device. (The screen turns off while the shutdown animation is displayed.)
- Power adjustment:** In the Power adjustment mode, press the "+" or "-" button to adjust the power, the increment is 0.5W, toggle between 5-100W, and long pressing and holding the button to enter the quick adjustment mode.
- Temperature control mode:** ① In the Temperature control mode, press the "+" or "-" button to adjust the temperature. The increment is 5°F/1°C each time, toggle between 100°C~315°C or 200°F~600°F, and long pressing and holding the button to enter the quick adjustment mode. ② When the present temperature model has been adjusted to the maximum or minimum value, pressing the button once again, the Fahrenheit and Celsius unit will be switched automatically at the same time.
- Setting mode:** Press the Fire button 3 times in quick succession to enter the setting mode.
- Exiting setting mode:** Long press the Fire button for 0.8s to exit the setting mode (Device will automatically exit the setting mode after 5s without operation).
- Switch operation mode:** ① Press the Fire button 3 times in quick succession to enter the setting mode. ② When the cursor stays at the working mode in the upper left corner, press the "+" or "-" button to adjust the corresponding setting item. ③ Optional work modes include: POWER, NI, TI, SS, TCR, VPC, BYPASS.
- Setting the wattage:** ① Press the Fire button 3 times in quick succession to enter the setting mode. ② Press the Fire button to toggle the cursor and select the WAT. ③ Press the "+" or "-" button to adjust the WAT parameters, long press the button to enter the quick adjustment mode.
- Reset the puff:** ① Press the Fire button 3 times in quick succession to enter the setting mode. ② Press the Fire button to toggle the cursor and select the PUFF. ③ Press the "+" button to clear the current value. ④ Press the "+" button again to recover the current value.
- Change TCR parameters:** ① Press the Fire button 3 times in quick succession to enter the setting mode. ② Press the Fire button to toggle the cursor and select the TCR. ③ Press the "+" or "-" button to adjust the TCR parameters, long press the button to enter the quick adjustment mode.
- Change VPC parameters:** ① Press the Fire button 3 times in quick succession to enter the setting mode. ② Press the Fire button to toggle the cursor to P1. ③ Press the "+" or "-" button to adjust the P1 power value, long press the button to enter the quick adjustment mode. ④ Continue to press the Fire button to toggle the cursor to the P2. ⑤ Press the "+" or "-" button to adjust the P2 power value, long press the button to enter the quick adjustment mode. ⑥ Repeat the same operation to adjust the P3, P4, P5 power value.
- Prompts:** ① Anti-reverse battery protection. (Reverse battery connection does not damage chip) ② While the resistance of tank  $\leq 0.08\Omega$ , the device prompts short circuit for 2s. ③ While the resistance of tank  $\geq 3.5\Omega$ , the device prompts high resistance for 2s. ④ Single battery voltage  $< 3.2V$  before use or  $< 2.8V$  during use, the device will stop output automatically and prompt low voltage for 2s. ⑤ When the temperature of circuit board  $> 65^{\circ}C$  before use or  $> 85^{\circ}C$  during use, the device prompts high temperature for 2s. ⑥ No atomizer: press the fire button, the device prompts no atomizer for 2s. ⑦ Single output is over 10s timeout, the device stops output and prompts timeout for 2s. ⑧ In the locked state, press the "+" or "-" button to adjust the parameters, the device prompts screen lock for 2s.
- Resistance lock:** When the cursor is toggle to the resistance value of coil, press the "-" button to lock/unlock the resistance value, press the "-" button to update resistance value and unlock.
- New atomizer:** ① In the standby interface, it will monitor whether the atomizer is replaced and update the latest atomizer resistance. ② When a new atomizer is inserted, the screen will jump to the interface for selecting new and old atomizer and prompt the user to select new and old atomizer. ③ Click the "+" key to select the new atomizer, and click the "-" key to select the old atomizer. ④ When the original atomizer is removed, the resistance value will be automatically cleared.
- Bypass mode:** The constant output voltage is 4.15V. The power does not exceed 200W.

- Version information display:** ① Press the fire button 5 times in quick succession to turn off the device, press the "+" and "-" buttons simultaneously for 2 seconds, the screen displays the version information of the current system and latest time of upgrade. ② Version information display: Aegis legend 2 Kit / GV20200918 V10 (20200918V10 is the update time and version of software, GV is Geek vape, please contact me for the supplier code and USB version number to prevent version conflicts and user upgrade failures)
- Configuration Reset:** After entering the version information interface, press and hold the "Fire", "+" and "-" buttons simultaneously for 2s to restore factory settings, the screen prompts to restore the factory interface, user releases the buttons for 2S to exit the prompt interface.
- Stealth mode:** ① Press the Fire button, "+" button and "-" button simultaneously for 2s, entering Stealth mode. ② Do the same, and exit the stealth mode.
- Switch display style:** On the setting mode, press the "+" and "-" buttons simultaneously for 1s to switch to the next theme.
- Child lock function:** ① Toggle the child lock button left/right to turn on/off the child lock function, prompt lock/ unlock interface for 2S, the child lock icon is updated to the corresponding locked/ unlocked state when returning to the main interface. ② When the child lock function is turned on, the output is stopped, and other operations are invalid except for switching on and off. ③ Turn on the child lock function and in the boot state, prompt the child lock locking interface for 2S when press the buttons.
- Screen brightness adjustment:** In the standby interface, press and hold the fire key and the "+" key for 1 second at the same time to display the brightness adjustment icon and turn the screen brightness step by step. Press and hold the fire key and "-" key at the same time to dim the screen brightness.
- Using while recharging:** ① Normal charging process and the ignition condition is satisfied, press the Fire button, charging is suspended, ignition output. ② Normal charging is restored after the ignition output is finished.
- Upgrade:** User terminal can upgrade, USB HID mode.

#### ATTENTION

- \* The product is not intended for pregnant women and those who are under the age of 21.
- \* Keep away from fire or extreme heat.
- \* Avoid impact.

#### CUSTOMER SERVICE

- Service in China**  
Main Page: [www.geekvape.com](http://www.geekvape.com)  
Address: 7th Floor, No.3 West Block, LaoBing Building, XingYe Road #3012, Xixiang Street, Bao'An District, Shenzhen, Guangdong, China. P.R.C.  
Phone: 1-866-985-6876  
Email: [support@geekvape.com](mailto:support@geekvape.com)  
Available time: 24/7
- Service in USA**  
Website: [www.geekvape.com](http://www.geekvape.com)  
Address: 7464 Nineteen Mile Road, Sterling Heights, MI, 48314 USA  
Phone: (866) 877-4335  
Email: [service@geekvapeusa.com](mailto:service@geekvapeusa.com)  
Available time: Mon-Fri, 9AM to 5PM EST

#### Service in PH

Website: [www.geekvape.com](http://www.geekvape.com)  
Email: [GeekvapePH@gmail.com](mailto:GeekvapePH@gmail.com)  
Available time: Mon-Fri, 9AM to 6PM GMT+8

#### ANTI-COUNTERFEITING CHECK

- Visual Method**
  - Sway the label gently under the light.
  - The logo will look gradually varied from different angles.
- Website Authenticity Check**
  - Go to [www.geekvape.com](http://www.geekvape.com) and find AUTHENTICITY CHECK at the bottom of the main page.
  - Scratch the code bar under the label on the box and enter the 12-digit security number in the blank on the webpage.
  - Click "Go" and a pop-up window shall appear confirming if your product is authentically made.
- Authenticity Check**

Your code has been verified by our system, thank you for purchasing Authentic Geek Vape!  
If you have any question on your product, please submit a ticket here!