

Christmas

AT The Little Scarlet Door



IT WAS OUR VISION FOR THE PERFECT HOUSE PARTY...

A place where people could meet in an unpretentious environment and have whatever party they wanted; from chilling in the kitchen to playing Mario Kart to getting wild and dancing the night away in the living room. It was where we would hang out with our friends and it's where we did.

And so the story began...

Nestled away amongst the hustle and bustle of Soho's Greek Street, step behind a bright Scarlet Door into a vibrant and colourful living room for canapés and cocktails by the Christmas tree.

Shake cocktails with our bartender at the Kitchen bar, or lounge about on one of our many gorgeous seating arrangements with your friends and colleagues. Afterwards, head downstairs into the Basement Studio for a boogie-inducing house party until late. From lounging under the mezzanine bedroom to getting wild and dancing, you'll be forgiven for feeling transported to NYC's iconic loft party scene.



HELLO FROM THE FLATMATES

We are an award-winning bar and restaurant group that creates beautiful venues to make you feel like you're walking into someone's home, styling it on a fictional flatshare. We're best known for throwing weekly house parties, dinner parties and private events.

Our story started eight years ago when we began as a pop-up in Notting Hill. Since then, we've opened four amazing, permanent venues across London and won multiple awards, including Best Bar in London by *Tatler Magazine* and Best Bottomless Brunch by the *Evening Standard*. We're incredibly proud of what we have created and would love to show you around!

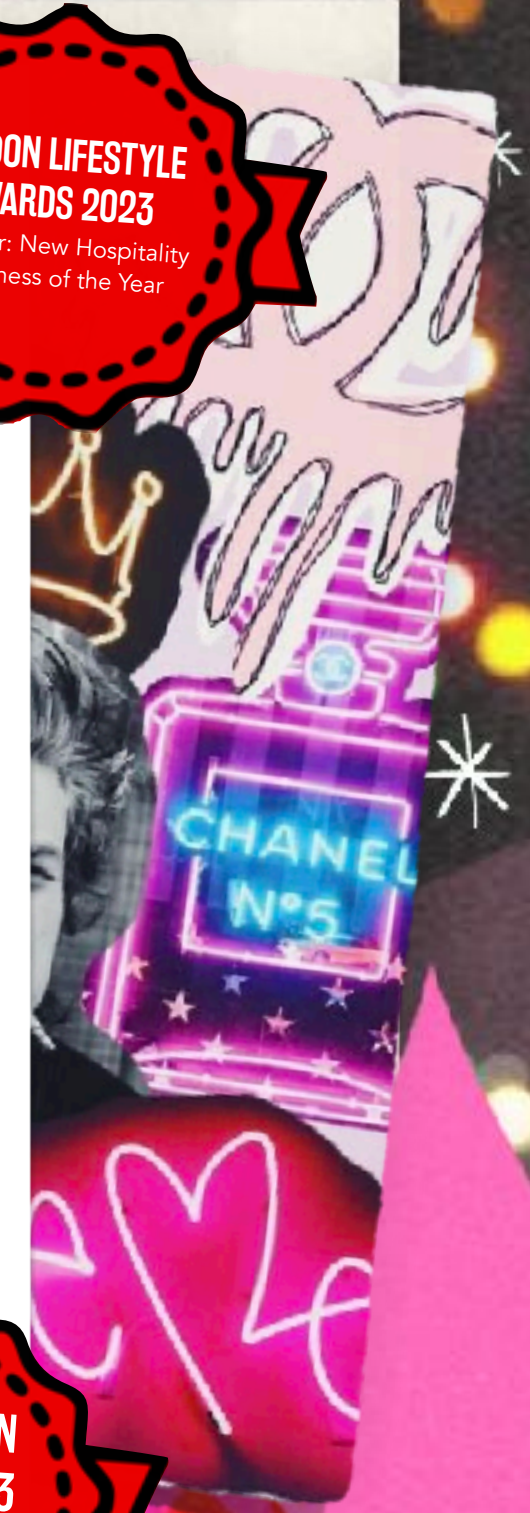
Having thrown countless house parties and dinner parties over the years, we've now moved into the beating heart of Soho to recreate London's ultimate house party destination: The Little Scarlet Door. Here, we aim to create an authentic, homely, and unpretentious environment for guests to eat, drink and dance in the setting of an epic house party.

We also have three other homes in [Clapham](#), [Fulham](#) and [Notting Hill](#).

**OUR HOUSE,
YOUR CHRISTMAS PARTY!**

"Like all their flats, the vibes are warm and homely – and with shareable cocktails and NYC loft-inspired interiors, this place has all the ingredients for a killer Soho house party."

- The Handbook



OUR FLAT

We are a 243 capacity late night cocktail bar located on Greek Street in the heart of London's Soho.

License (N.B. All days are available for private hire):

- Monday to Tuesday: 4pm - 1am
- Wednesday: 12pm - 1am
- Thursday: 12pm - 2am
- Friday to Saturday: 12pm - 3am
- Sunday: 12pm - 11pm



LIVING ROOM AND KITCHEN

Up to 60 standing

Perfect for a homely cocktail party. This is the main thoroughfare of the venue so cannot be fully exclusive.

BASEMENT STUDIO

Up to 130 standing

With its own decks and sound system and private bar, this is the perfect space to throw your own house party.

VAULT

Up to 12 seated

Your own private room just off the dance floor.

COURTYARD

Up to 24 seated

This cannot be hired on its own and is available for hire with another room at extra cost.

THE LIVING ROOM AND KITCHEN

OVERVIEW

Our vibrant and colourful open plan Living Room and Kitchen sits on the ground floor with gorgeous sofas and a beautiful kitchen bar where guests can enjoy cocktails, surrounded by incredible works of art curated by Soho Revue Gallery. This is the ideal spot for laidback dining and drinking.

FEATURES

Kitchen bar, comfy sofas, cloakroom, private WC, surround sound and access to the Courtyard.

LAYOUT

On the left is a group seating area by the living room bookcase that opens up to a large dining room table. Opposite is the kitchen bar with bar seating. There is also the 'nook' area to the right of the entrance.

SIZE

50m²

CAPACITY

Up to 60 Standing



FURTHER IMAGERY



BASEMENT STUDIO

OVERVIEW

With its industrial exposed pillars, long bar and open-plan layout, the basement is the perfect space to host your very own house party. Explore our homely quirks, from the fancy dress box to the Nintendo 64, relax by the fireplace, or dance the night away to our resident DJs! The Little Scarlet Door Resident DJ is available at extra cost.

FEATURES

Long bar, Nintendo 64, comfy sofas, Vinyl station DJ booth, surround sound, a fireplace, sound system and plenty of space to dance!

LAYOUT

Enter down the stairs to reveal an open plan living area with sofas and a large bar area. On the left there are pillars with a sofa / DJ space and mezzanine (non-accessible) with a bed. Opposite is the walk-in shower. To the right of the stairs are the loos and the laundry area leading to the Vault.

SIZE

70m²

CAPACITY

Up to 130 standing



FURTHER IMAGERY



THE VAULT

OVERVIEW

Paying homage to Warhol's factory, the aluminium walls have made their way to our Vault at The Little Scarlet Door. Hidden away from the rest of the venue behind the laundry room, this spot is the ideal private setting for cocktails and conversation.

LAYOUT

Push past the bras and knickers in the laundry room to access the Vault, just off the basement studio dance floor. It has two large comfortable sofas and fur rugs behind a privacy curtain to host an intimate gathering.

SIZE

14m²

CAPACITY

Up to 12 seated



THE COURTYARD

OVERVIEW

Nestled just behind Greek Street in James Court, our Courtyard can seat up to 24 guests. Surrounded by beautiful blue tiling and greenery, you will be whisked away from the hustle and bustle of central London for al fresco drinks, complete with heaters and blankets for the winter months.

LAYOUT

Through the French doors from the open plan Living Room and Kitchen, step outside into the Courtyard where there are tables and chairs set up for small groups.

CAPACITY

Up to 24 seated

The Courtyard is included in full venue private hires and cannot be hired on its own. It can be added to a room hire at extra cost.



FOOD & DRINKS

Our food draws inspiration from our most popular home-style dishes from our favourite flatmates, past and present. Designed with sharing and bonding in mind, our menus are compiled of deliciously recognisable **comfort food with a twist**, bringing you a fantastic selection of **nostalgic favourites** using **seasonal ingredients to warm your winter cockles**.

Whether sitting or standing amongst the revelry of a private house party, expect an eclectic selection of sharing mezze and toasties. Be sure to check out our **Flatmates Recommended** list of our top food, drink and entertainment suggestions too.

For private hires, we offer only the bowl food and canapé menus.

FESTIVE MENUS

THE FLATMATES RECOMMEND

DRINKS MENU

**WANT A SIT-DOWN LUNCH OR DINNER?
OUR SISTER FLATS CAN HELP!**

The Little Orange Door
The Little Blue Door



ENQUIRIES

Click [here](#) to get in touch for rates and further info.

12-13 Greek Street
London
W1D 4DL
020 4513 2429



We have a full list of FAQs [here](#) to answer any initial queries you may have.

A stylized graphic of a red door with a black outline, set against a background of red and pink brushstrokes. The text 'The Little SCARLET Door' is written across the door. 'The' and 'Little' are in a cursive font, 'SCARLET' is in a large, bold, black sans-serif font, and 'Door' is in a cursive font. The door has a handle and a keyhole on the right side.

The
Little
SCARLET
Door

TAKE A LOOK AROUND OUR OTHER FLATS...



The Little Yellow Door

Notting Hill

[Click here](#)



The Little Orange Door

Clapham Common

[Click here](#)



The Little Blue Door

Fulham

[Click here](#)

**MERRY CHRISTMAS
FROM THE FLATMATES!**

