

# SAMPLE BALLOT

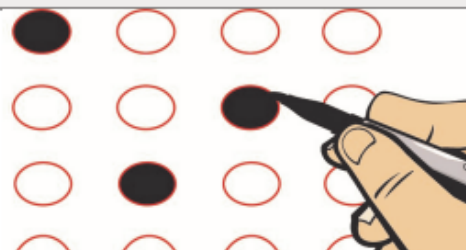


**Vote for Kids** is a nonpartisan campaign aimed at elevating issues that impact children, youth, and families and making them core to candidate's platforms.

## RANKED CHOICE VOTING

**Instructions: Vote by ranking the options of your choice.**

- Rank as many or as few candidates as you like
- Completely fill in no more than one oval for each candidate or column
- For your 1st choice, fill in the oval in the 1st choice column
- For your 2nd choice, fill in the oval in the 2nd choice column
- For your 3rd choice, fill in the oval in the 3rd choice column, and so on
- **If you make a mistake you can ask for a new ballot**



## SUMMER ACTIVITIES TO DO AS A FAMILY

	1st Choice	2nd Choice	3rd Choice	4th Choice	5th Choice
Going for a walk	<input type="radio"/>	<input type="radio"/>	<input type="radio"/>	<input type="radio"/>	<input type="radio"/>
Playing a game	<input type="radio"/>	<input type="radio"/>	<input type="radio"/>	<input type="radio"/>	<input type="radio"/>
Reading together	<input type="radio"/>	<input type="radio"/>	<input type="radio"/>	<input type="radio"/>	<input type="radio"/>
Swimming	<input type="radio"/>	<input type="radio"/>	<input type="radio"/>	<input type="radio"/>	<input type="radio"/>
Write-in:	<input type="radio"/>	<input type="radio"/>	<input type="radio"/>	<input type="radio"/>	<input type="radio"/>

## AFTERSCHOOL ACTIVITIES

	1st Choice	2nd Choice	3rd Choice	4th Choice	5th Choice
Doing science, engineering, computer, or math projects	<input type="radio"/>	<input type="radio"/>	<input type="radio"/>	<input type="radio"/>	<input type="radio"/>
Learning about the outdoors	<input type="radio"/>	<input type="radio"/>	<input type="radio"/>	<input type="radio"/>	<input type="radio"/>
Cooking or baking together	<input type="radio"/>	<input type="radio"/>	<input type="radio"/>	<input type="radio"/>	<input type="radio"/>
Making new friends and meeting fun adults	<input type="radio"/>	<input type="radio"/>	<input type="radio"/>	<input type="radio"/>	<input type="radio"/>
Write-in:	<input type="radio"/>	<input type="radio"/>	<input type="radio"/>	<input type="radio"/>	<input type="radio"/>

## SUBSISTENCE ACTIVITIES TO DO AS A FAMILY

	1st Choice	2nd Choice	3rd Choice	4th Choice	5th Choice
Pick (and eat) berries!	<input type="radio"/>	<input type="radio"/>	<input type="radio"/>	<input type="radio"/>	<input type="radio"/>
Fish for salmon	<input type="radio"/>	<input type="radio"/>	<input type="radio"/>	<input type="radio"/>	<input type="radio"/>
Fish for another kind of fish (tell a staff member which kind!)	<input type="radio"/>	<input type="radio"/>	<input type="radio"/>	<input type="radio"/>	<input type="radio"/>
Harvest plants for tea or basket-making or another use	<input type="radio"/>	<input type="radio"/>	<input type="radio"/>	<input type="radio"/>	<input type="radio"/>
Write-in:	<input type="radio"/>	<input type="radio"/>	<input type="radio"/>	<input type="radio"/>	<input type="radio"/>

## FAVORITE MEAL TO EAT TOGETHER

	1st Choice	2nd Choice	3rd Choice	4th Choice
Breakfast and talk about an exciting day ahead	<input type="radio"/>	<input type="radio"/>	<input type="radio"/>	<input type="radio"/>
Lunch and take a break from a busy day together	<input type="radio"/>	<input type="radio"/>	<input type="radio"/>	<input type="radio"/>
Dinner and tell my family all about my day	<input type="radio"/>	<input type="radio"/>	<input type="radio"/>	<input type="radio"/>
Write-in:	<input type="radio"/>	<input type="radio"/>	<input type="radio"/>	<input type="radio"/>

Continue Voting on Next Side

# SAMPLE BALLOT

## PROTECTIVE FACTORS- rank 1st what your family excels at!

	1st Choice	2nd Choice	3rd Choice	4th Choice	5th Choice
Parental resilience- can manage & bounce back from challenges	<input type="radio"/> <sup>1</sup>	<input type="radio"/> <sup>2</sup>	<input type="radio"/> <sup>3</sup>	<input type="radio"/> <sup>4</sup>	<input type="radio"/> <sup>5</sup>
Social connections- parents have a network of support	<input type="radio"/> <sup>1</sup>	<input type="radio"/> <sup>2</sup>	<input type="radio"/> <sup>3</sup>	<input type="radio"/> <sup>4</sup>	<input type="radio"/> <sup>5</sup>
Knowledge of parenting and child development	<input type="radio"/> <sup>1</sup>	<input type="radio"/> <sup>2</sup>	<input type="radio"/> <sup>3</sup>	<input type="radio"/> <sup>4</sup>	<input type="radio"/> <sup>5</sup>
Concrete supports in times of need- basic needs are provided	<input type="radio"/> <sup>1</sup>	<input type="radio"/> <sup>2</sup>	<input type="radio"/> <sup>3</sup>	<input type="radio"/> <sup>4</sup>	<input type="radio"/> <sup>5</sup>
Social & emotional competence of children	<input type="radio"/> <sup>1</sup>	<input type="radio"/> <sup>2</sup>	<input type="radio"/> <sup>3</sup>	<input type="radio"/> <sup>4</sup>	<input type="radio"/> <sup>5</sup>

**Instructions:** To vote the following choices, completely fill in the oval to the right of your choice, like this:

### QUESTION NO. 1

Would you invite a moose to dinner?

Yes  | No

### QUESTION NO. 2

Have you been fishing before?

Yes  | No

### QUESTION NO. 3

Are mosquitos friendly?

Yes  | No

Learn more about the Strengthening Families Protective Factors:  
[alaskachildrenstrust.org/strengthening-families](http://alaskachildrenstrust.org/strengthening-families)

