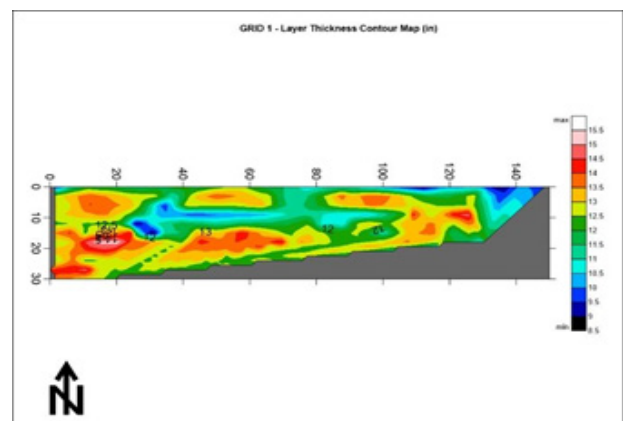
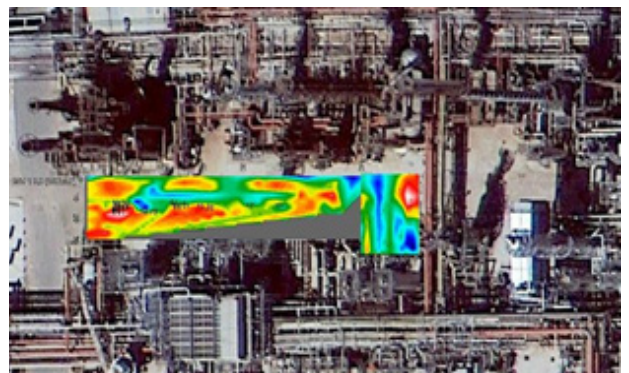




## 3D LAYER THICKNESS MAPPING

Crane or heavy machinery placement requires high risk assessment in Refineries or Chemical Plants. Concrete or asphalt pavement that must be assessed in a proper way to lower the possibility of risk prior to lifting or hoisting. The best way to do it is to perform a comprehensive assessment with a mid-frequency GPR system.

- Conducting a formal 3D GPR survey (1-4' scan line increment)
- Data Interpolation, digital model creation
- Data assessment, top layer determination and mark out
- Numeric data export in ASCII
- Creating digital contour map that indicates layer thickness variations through the scan area
- Marking out sections on the concrete pad where.



### Contact Us

☎ 281-702-7648

✉ Gabe.Enekes@omnivuendt.com

🌐 omnivuendt.com

📍 210 Derrick Drive, Humble, TX 77338