



# The regreening of 209 South Broadway

Phase 1 – July 2022 to July 2024

A progress report in before & after pictures.

[www.sobroconservancy.org](http://www.sobroconservancy.org)



**SoBro closed on the parcel on July 14, 2022.  
The degraded soil supported little life.**

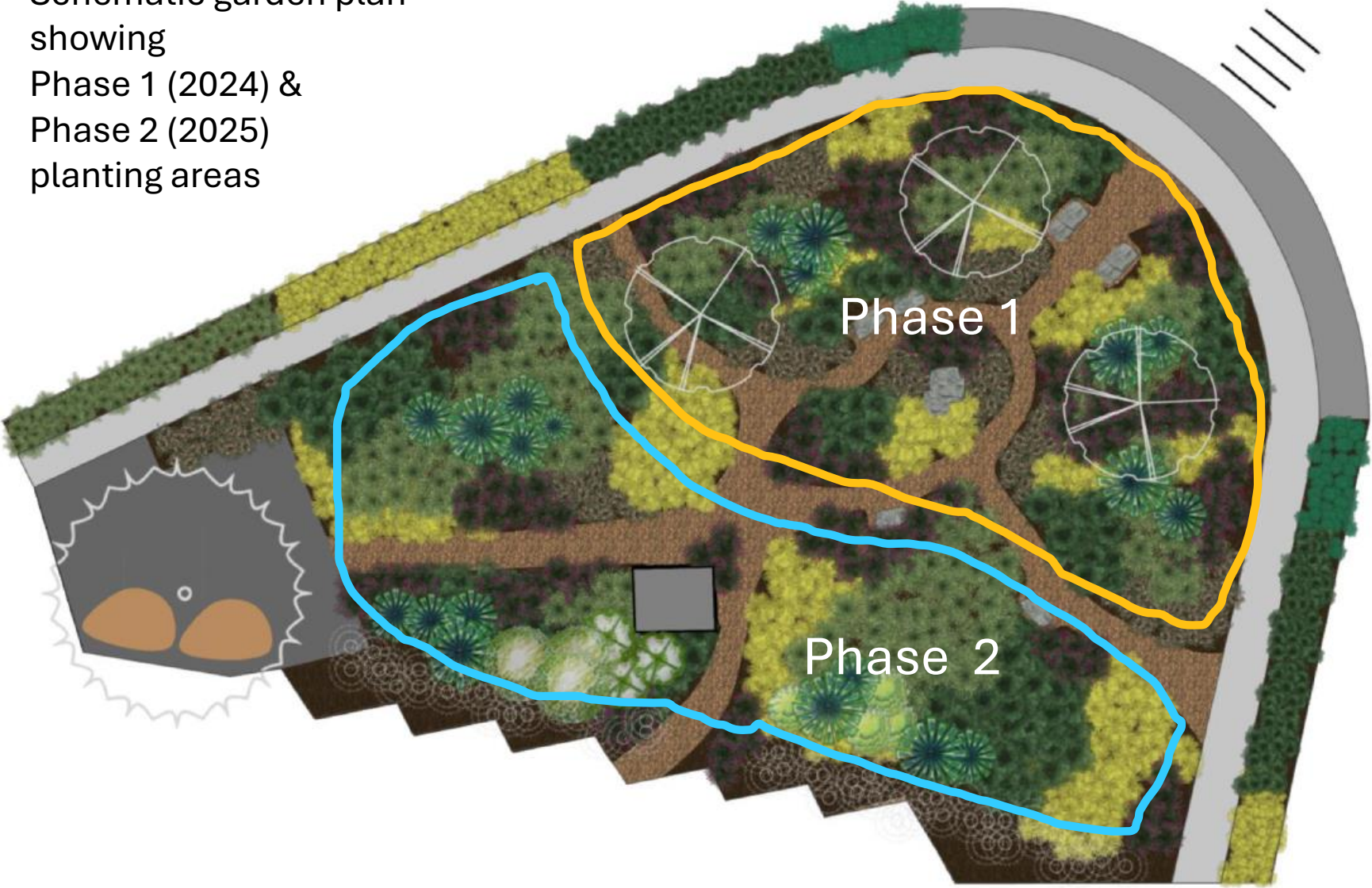


**2022 – the barren parcel had long been used as a parking lot**



**Early 2022 – when SoBro was in negotiations to acquire the parcel**

Schematic garden plan showing Phase 1 (2024) & Phase 2 (2025) planting areas





**Two years of prep work by volunteers**



May 11, 2024 – 55 volunteers plant 600 plants

May 11, 2024 – newly planted beds

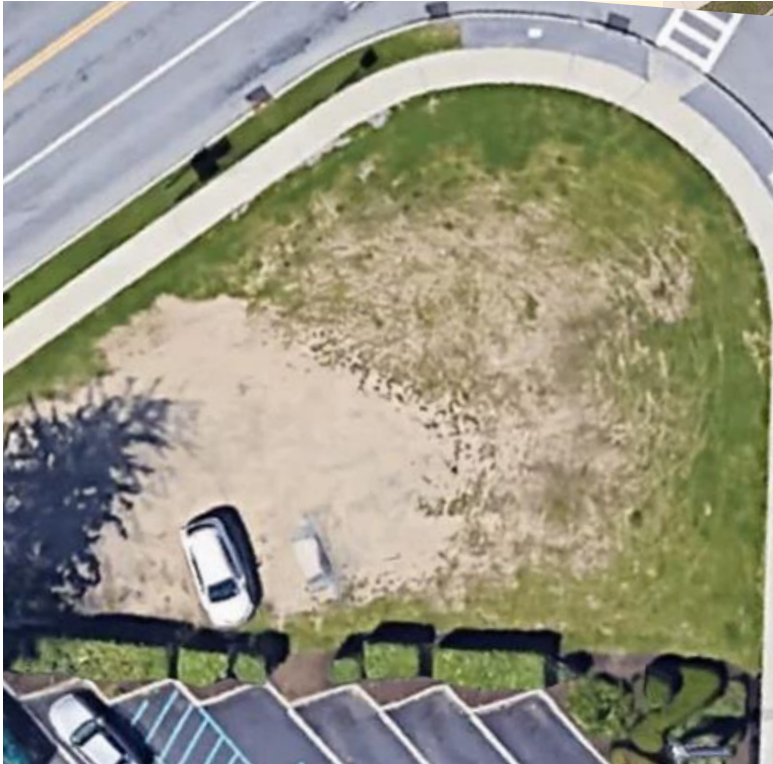


Photo: Ben Trudell





May 2024 – four garden beds fully planted



2021

Just before SoBro  
Conservancy took  
ownership



May 11, 2024

Beds have been prepped,  
soil has been amended,  
&  
Phase 1 planting completed



**June 2024 – the new plants come to life**

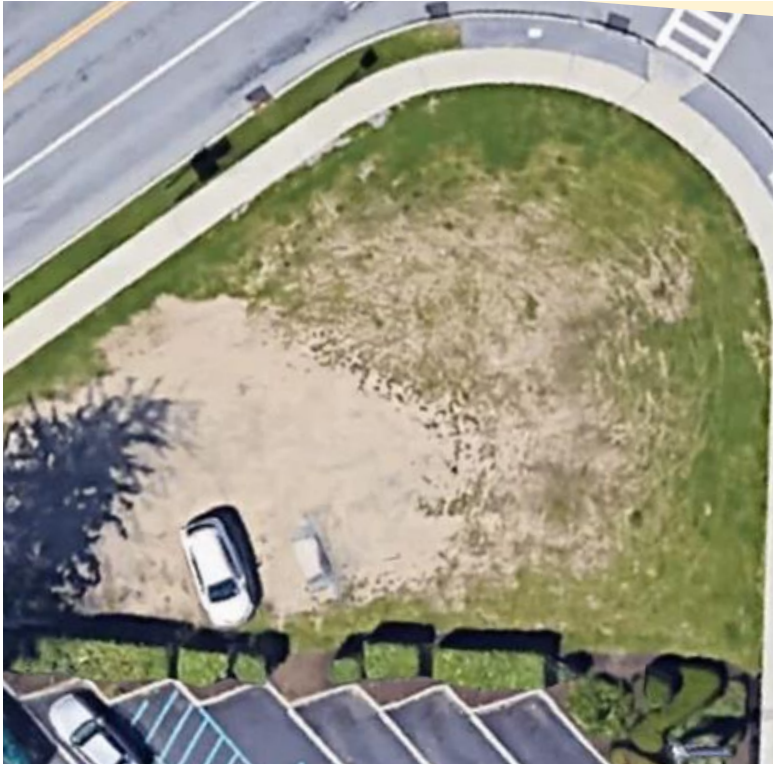


**June 2024 – the garden comes to life**



**June 2024 – the  
garden in the  
morning**

BEFORE



2021

Just before SoBro  
Conservancy took  
ownership

AFTER



July, 2024

Beds have been prepped,  
soil has been amended,  
&  
Phase 1 plantings  
established



**BEFORE**  
**2022 – view towards Citizens Bank**



**AFTER**  
**July 2024 – view towards Citizens Bank**





**BEFORE**  
**2022 – view east toward Stewart's**



**AFTER**  
**July 2024 – view east toward Stewart's**



**BEFORE**

**2022 – view from the intersection towards Dunkin' Donuts**



Conserving vacant urban parcels  
& transforming them into  
pollinator-friendly green spaces

Project #1  
Creating the Gateway to South Brimley

2021-2024

2024

**AFTER**

**July 2024 – view from the intersection towards Dunkin’ Donuts**

June 2024 –  
a young  
basswood tree  
reaches upward  
over the blooming  
penstemon



July 2024 –  
a young  
basswood tree  
reaches upward  
over the next  
wave of flowers





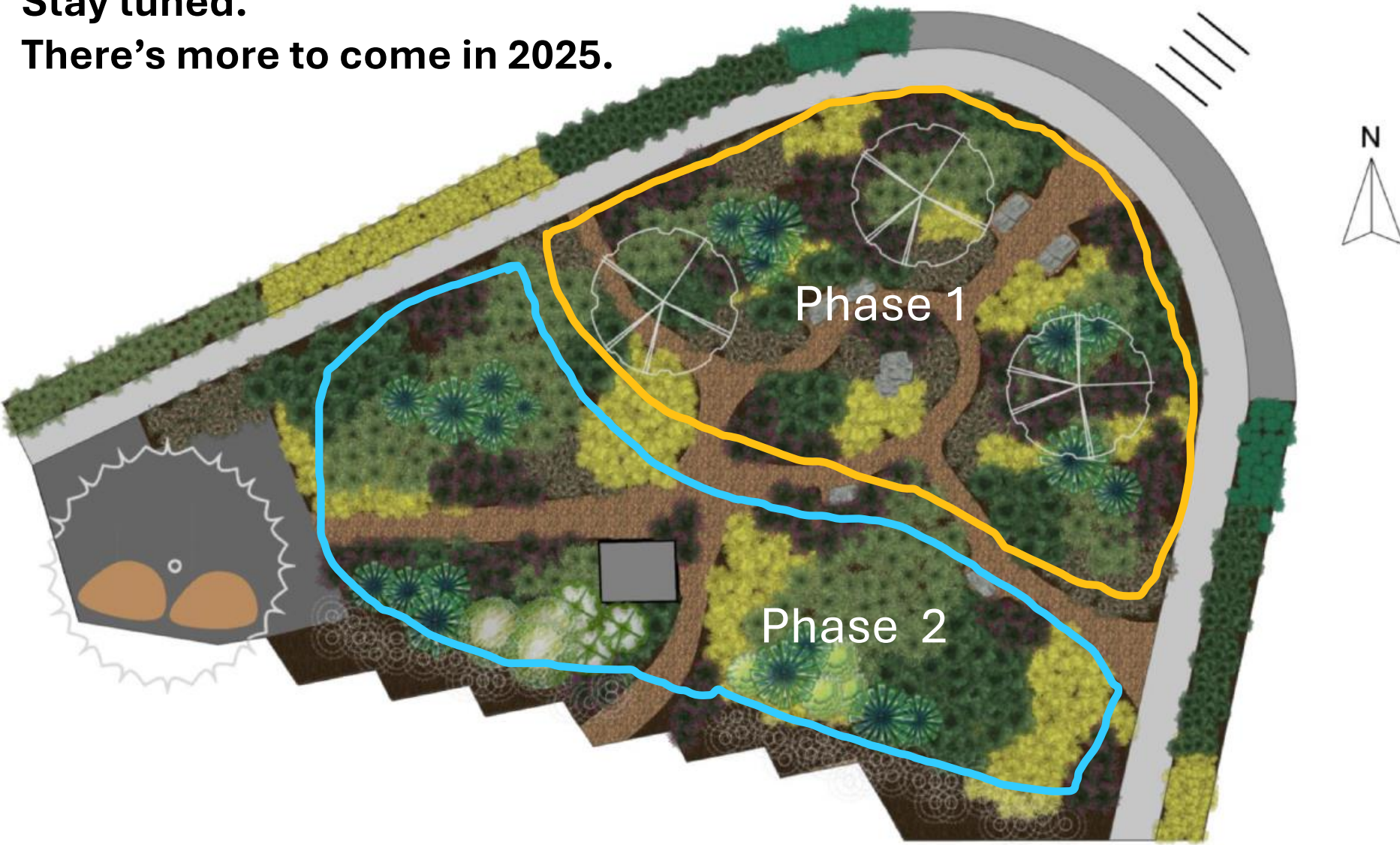
July 2024 – the garden fills in

A photograph of a garden in July 2024. A large, dark grey rock is prominent on the left side. The garden is filled with lush green plants. Several tall, slender plants with pink flowers are visible, along with a dense cluster of bright yellow flowers in the foreground. The scene is brightly lit, suggesting a sunny day.

**July 2024 –  
the garden fills in**



**Stay tuned.  
There's more to come in 2025.**



# Credits

The progress to date on the transformation of 209 South Broadway has only been possible because of the great outpouring of support from a broad community of volunteers, donors, supporters, neighbors, and advisors.

SoBro Conservancy thanks all who generously gave of their time, talents, wisdom, and support, both financial and in-kind.

As we move on to Phase 2 and beyond, we look forward to continuing our work together.

Garden Design by Design Wild  
[www.designwildny.com](http://www.designwildny.com)

Unless otherwise indicated, photos by Tom Denny.

May 11, 2024 aerial photo: Ben Trudell  
July 2024 aerial photo: Neil Hannon  
2021 aerial photo: Google Earth