

# Content



**Ontdek onze Acsento collecties in meer detail via deze interactieve catalogus.** Door in de inhoudstafel te klikken op de naam van het gewenste tapijt, navigeer je automatisch naar de correcte pagina. Daar tonen we voor elk tapijt wat de mogelijke kleuren, maten en vormen zijn.



**Découvrez nos collections Acsento plus en détail grâce à ce catalogue interactif.** En cliquant sur le nom du tapis souhaité dans la table des matières, vous accéderez automatiquement à la bonne page. Nous vous y présentons les couleurs, les tailles et les formes possibles de chaque tapis.



**Discover our Acsento collections in more detail through this interactive catalogue.** By clicking on the name of the desired carpet in the table of contents, you will automatically navigate to the correct page. There, we show you the possible colours, sizes and shapes of each carpet.



**Entdecken Sie unsere Acsento-Kollektionen in diesem interaktiven Katalog genauer.** Wenn Sie im Inhaltsverzeichnis auf den Namen des gewünschten Teppichs klicken, werden Sie automatisch auf die richtige Seite weitergeleitet. Dort zeigen wir Ihnen die möglichen Farben, Größen und Formen der einzelnen Teppiche.

## FLANDERS

Bolzano	70
Chiara 826	20
Chiara 949	22
Chiara 1016	16
Chiara 1018	18
Chiara 1097	10
Chiara Ivory	12
Chiara Waves	14
Classico 961-963	38
Curzo	52
Diamo	74
Ecstasy	78
Faro 880	24
Faro 884	26
Freek	76
Geometrics	72
Grunge	62
Himalaya	36
Loni 105	32
Loni 3128	34
Meda	66
Merron	50
Mila 011	28
Mila 016	30
Mystic	54
Nuance	60
Rabat	58
Tara Deluxe	44
Venice	40

## HANDMADE

Elba	82
Kingstown	92
Kreta	84
Madeira	98
Napoli	90
Newton	94
Pella	86
Ravenna	88
Westport	96



# Flanders collection

09



Timeless perfection,  
ecological products  
woven in local weaving mills.



# Chiara 1097

## QUALITY

- viscose, wool
- 1550g/m<sup>2</sup> - 4 mm
- machine made - Belgium

## STANDARD SIZES

- 160x230 cm
- 200x290 cm
- 240x340 cm
- 280x380 cm

## SPECIAL SIZES

- max width 280 cm
- max length 380 cm

## SHAPES



[back to index](#)

## DELIVERY

- standard sizes: 2 weeks
- special sizes: 3 weeks



beige /taupe green



beige/stone



ivory /warm beige



Ivory/ivory





# Chiara Ivory

## QUALITY

- viscose, wool
- 1550g/m<sup>2</sup> - 4 mm
- machine made - Belgium

## STANDARD SIZES

- 160x230 cm
- 200x290 cm
- 240x340 cm
- 280x380 cm

## SPECIAL SIZES

- max width 280 cm
- max length 380 cm

## SHAPES



## DELIVERY

- standard sizes: 2 weeks
- special sizes: 3 weeks



quadra - ivory/ivory



diabolo - ivory/ivory



horizon - ivory/ivory



waves - ivory/ivory





[back to index](#)

# Chiara Waves

## QUALITY

- viscose, wool
- 1550g/m<sup>2</sup> - 4 mm
- machine made - Belgium

## STANDARD SIZES

- 160x230 cm
- 200x290 cm
- 240x340 cm
- 280x380 cm

## SPECIAL SIZES

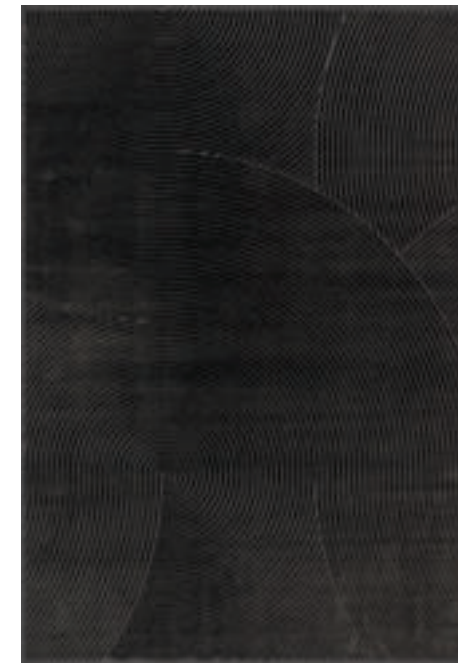
- max width 280 cm
- max length 380 cm

## SHAPES



## DELIVERY

- standard sizes: 2 weeks
- special sizes: 3 weeks



grey/grey



grey/cognac



grey/gold



ivory/ivory





# Chiara 1016

## QUALITY

- viscose, wool
- 1550g/m<sup>2</sup> - 4 mm
- machine made - Belgium

## STANDARD SIZES

- 160x230 cm
- 200x290 cm
- 240x340 cm
- 280x380 cm

## SPECIAL SIZES

- max width 280 cm
- max length 380 cm

## SHAPES



## DELIVERY

- standard sizes: 2 weeks
- special sizes: 3 weeks



beige/beige



grey/anthracite



grey/blue



beige/gold





# Chiara 1018

## QUALITY

- viscose, wool
- 1550g/m<sup>2</sup> - 4 mm
- machine made - Belgium

## STANDARD SIZES

- 160x230 cm
- 200x290 cm
- 240x340 cm
- 280x380 cm

## SPECIAL SIZES

- max width 280 cm
- max length 380 cm

## SHAPES



[back to index](#)

## DELIVERY

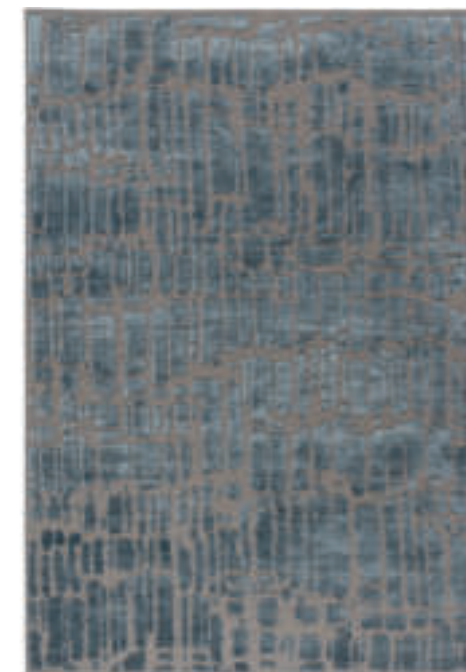
- standard sizes: 2 weeks
- special sizes: 3 weeks



beige/beige



grey/tobacco



grey/blue



beige/gold





[back to index](#)

# Chiara 826

## QUALITY

- viscose, wool
- 1550g/m<sup>2</sup> - 4 mm
- machine made - Belgium

## STANDARD SIZES

- 160x230 cm
- 200x290 cm
- 240x340 cm
- 280x380 cm

## SPECIAL SIZES

- max width 280 cm
- max length 380 cm

## SHAPES



## DELIVERY

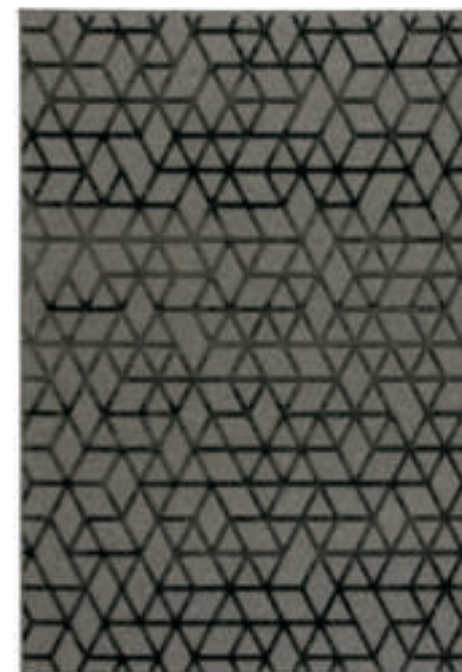
- standard sizes: 2 weeks
- special sizes: 3 weeks



grey/red



beige/off-white



grey/anthracite



beige/grey





# Chiara 949

## QUALITY

- viscose, wool
- 1550g/m<sup>2</sup> - 4 mm
- machine made - Belgium

## STANDARD SIZES

- 160x230 cm
- 200x290 cm
- 240x340 cm
- 280x380 cm

## SPECIAL SIZES

- max width 280 cm
- max length 380 cm

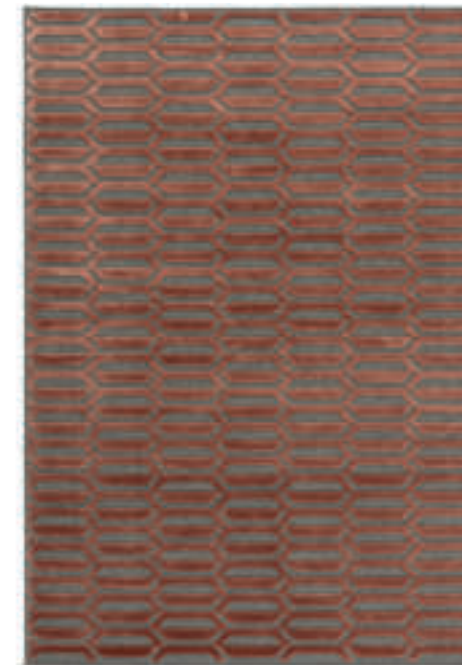
## SHAPES



[back to index](#)

## DELIVERY

- standard sizes: 2 weeks
- special sizes: 3 weeks



grey/red



grey/beige



grey/anthracite



beige/beige





# Faro 880

## QUALITY

- viscose, polyester
- 1600g/m<sup>2</sup> - 3,5 mm
- machine made - Belgium

## STANDARD SIZES

- 160x230 cm
- 200x300 cm
- 240x340 cm
- 280x380 cm

## SPECIAL SIZES

- max width 280 cm
- max length 380 cm

## SHAPES



[back to index](#)

## DELIVERY

- standard sizes: 2 weeks
- special sizes: 3 weeks



olive



brown/black



grey/silver



beige/gold





# Faro 884

## QUALITY

- viscose, polyester
- 1600g/m<sup>2</sup> - 3,5 mm
- machine made - Belgium



[back to index](#)

## STANDARD SIZES

- 160x230 cm
- 200x300 cm
- 240x340 cm
- 280x380 cm

## SPECIAL SIZES

- max width 280 cm
- max length 380 cm

## SHAPES



## DELIVERY

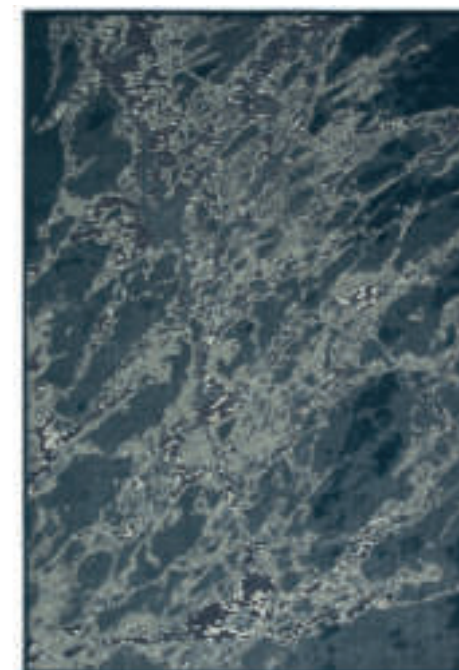
- standard sizes: 2 weeks
- special sizes: 3 weeks



silver



grey



blue



brown/black





# Mila 011

## QUALITY

- wool, viscose
- 1600g/m<sup>2</sup> - 4 mm
- machine made - Belgium



[back to index](#)

## STANDARD SIZES

- 160x230 cm
- 200x290 cm
- 240x340 cm
- 280x380 cm

## SPECIAL SIZES

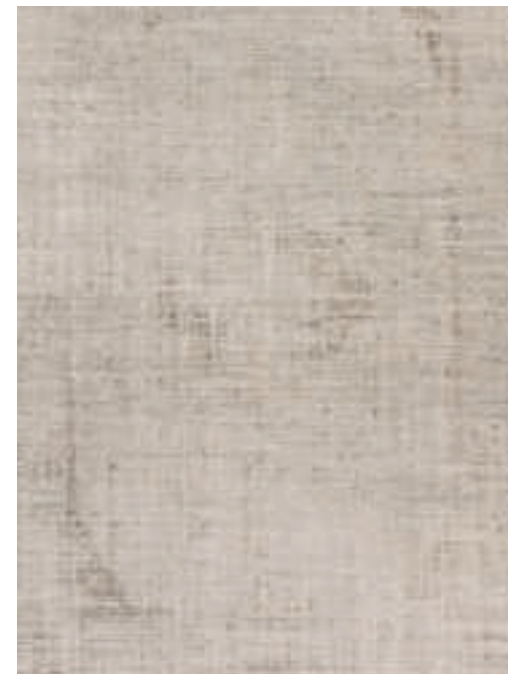
- max width 280 cm
- max length 380 cm

## SHAPES



## DELIVERY

- standard sizes: 2 weeks
- special sizes: 3 weeks



beige



silver



grey



red





# Mila 016

## QUALITY

- wool, viscose
- 1600g/m<sup>2</sup> - 4 mm
- machine made - Belgium

## STANDARD SIZES

- 160x230 cm
- 200x290 cm
- 240x340 cm
- 280x380 cm

## SPECIAL SIZES

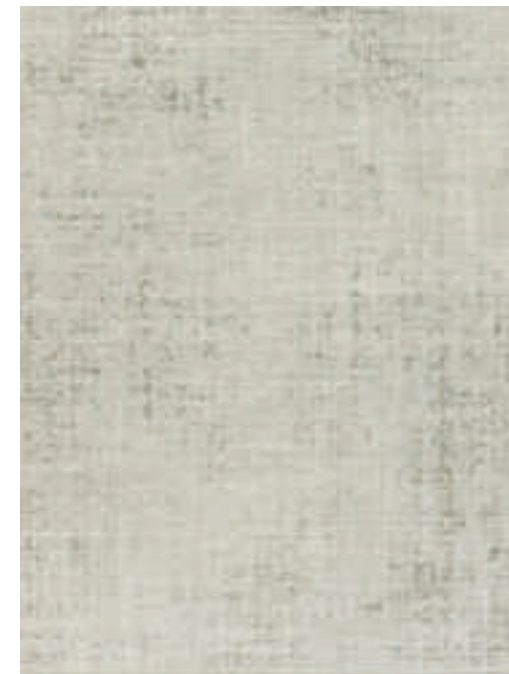
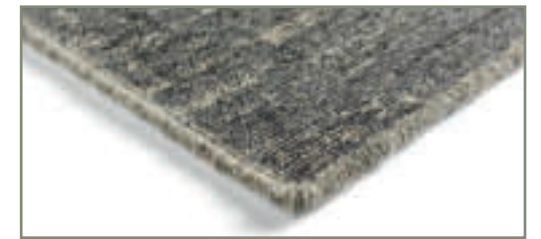
- max width 280 cm
- max length 380 cm

## SHAPES



## DELIVERY

- standard sizes: 2 weeks
- special sizes: 3 weeks



beige



silver



grey



blue





# Loni 105

## QUALITY

- viscose, wool
- 1600g/m<sup>2</sup> - 4 mm
- machine made - Belgium

## STANDARD SIZES

- 160x230 cm
- 200x290 cm
- 240x340 cm
- 280x380 cm

## SPECIAL SIZES

- max width 280 cm
- max length 380 cm

## SHAPES



## DELIVERY

- standard sizes: 2 weeks
- special sizes: 3 weeks



beige



grey



bronze



blue





# Loni 3128

## QUALITY

- viscose, wool
- 1600g/m<sup>2</sup> - 4 mm
- machine made - Belgium

## STANDARD SIZES

- 160x230 cm
- 200x290 cm
- 240x340 cm
- 280x380 cm

## SPECIAL SIZES

- max width 280 cm
- max length 380 cm

## SHAPES



## DELIVERY

- standard sizes: 2 weeks
- special sizes: 3 weeks



beige



grey



bronze



ocher





# Himalaya

## QUALITY

- viscose, polyester
- 2200g/m<sup>2</sup> - 7,5 mm
- machine made - Belgium

## STANDARD SIZES

- 160x230 cm
- 200x300 cm
- 240x340 cm
- 280x380 cm

## SPECIAL SIZES

- max width 280 cm
- max length 380 cm

## SHAPES



## DELIVERY

- standard sizes: 2 weeks
- special sizes: 3 weeks

[back to index](#)



809 beige/off-white



810 beige/off-white



840 off-white/blue



878 grey/beige





# Classico 961-963

## QUALITY

- viscose
- 1700g/m<sup>2</sup> - 3,5 mm
- machine made - Belgium

## STANDARD SIZES

- 160x230 cm
- 200x290 cm
- 240x340 cm
- 280x380 cm

## DELIVERY

- standard sizes: 2 weeks



des. 961 – stone 475



des. 961 – stone 477



des. 963 – stone 475



des. 963 – stone 477





# Venice

## QUALITY

- viscose
- 840g/m<sup>2</sup> - 3,5 mm
- machine made - Belgium

## STANDARD SIZES

- 160x230 cm
- 200x290 cm

## DELIVERY

- standard sizes: 2 weeks

[back to index](#)



des. 9792 – beige/aqua



des. 9810 – beige/grey



des. 9883 – anthracite/multicolour



des. 9898 – beige/grey





# Venice

## QUALITY

- viscose
- 840g/m<sup>2</sup> - 3,5 mm
- machine made - Belgium

## STANDARD SIZES

- 160x230 cm
- 200x290 cm

## DELIVERY

- standard sizes: 2 weeks

[back to index](#)



des. 9930 – stone/anthracite



des. 9937 – red multicolour



des. 9994 – beige



des. 9994 – stone





[back to index](#)

# Tara Deluxe

## QUALITY

- polyester microfiber
- 3000g/m<sup>2</sup> - 7,5 mm
- machine made - Belgium

## STANDARD SIZES

- 160x230 cm
- 200x290 cm

## SPECIAL SIZES

- minimum 3 m<sup>2</sup>
- max width 390 cm

## DELIVERY

- standard sizes: 2 weeks
- special sizes: 3 weeks

## OPTIONAL

- volume finish

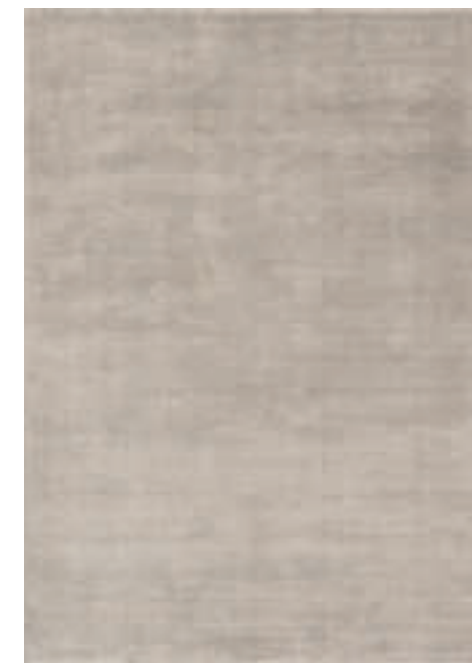
## SHAPES



beige



light grey



taupe



anthracite





# Tara Deluxe

## QUALITY

- polyester microfiber
- 3000g/m<sup>2</sup> - 7,5 mm
- machine made - Belgium

## STANDARD SIZES

- 160x230 cm
- 200x290 cm

## SPECIAL SIZES

- minimum 3 m<sup>2</sup>
- max width 390 cm

## OPTIONAL

- volume finish

## SHAPES



[back to index](#)

## DELIVERY

- standard sizes: 2 weeks
- special sizes: 3 weeks



gold



olive green



rust



navy



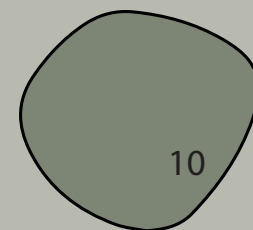
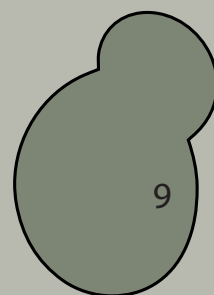
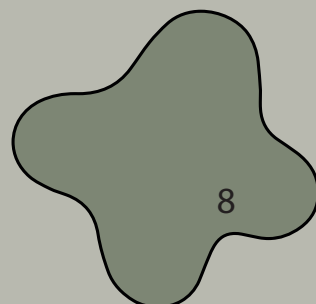
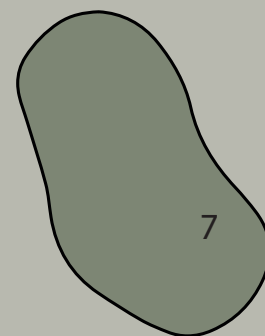
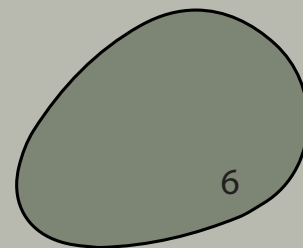
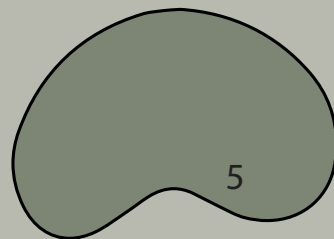
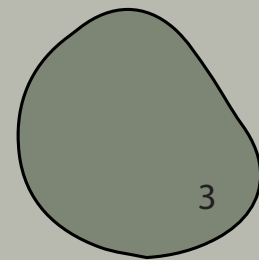
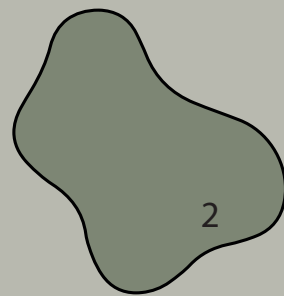
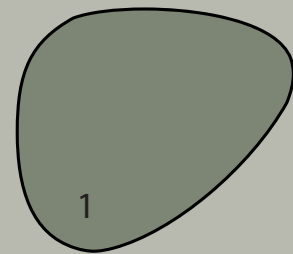


# Organic shapes

## Let your imagination run wild

All rugs with the remark "custom size" can be custom made in the shapes below.

*Feel free to ask for a quotation or other specific shapes.*





# Merron

## QUALITY

- acrylic, polyester, viscose, cotton
- chenille - 1540g/m<sup>2</sup> - 3,5 mm
- machine made - Belgium

## STANDARD SIZES

- 170x230 cm
- 200x300 cm
- 240x340 cm

## DELIVERY

- standard sizes: 2 weeks

[back to index](#)



beige



gold



graphite



grey





# Curzo

## QUALITY

- acrylic, polyester, viscose, cotton
- chenille - 1540g/m<sup>2</sup> - 3,5 mm
- machine made - Belgium

## STANDARD SIZES

- 170x230 cm
- 200x300 cm
- 240x340 cm

## DELIVERY

- standard sizes: 2 weeks

[back to index](#)



taupe



basalt



stone



natural





# Mystic

## QUALITY

- acrylic, polyester, viscose, cotton
- chenille - 1540g/m<sup>2</sup> - 3,5 mm
- machine made - Belgium



[back to index](#)

## STANDARD SIZES

- 170x230 cm
- 200x300 cm
- 240x340 cm
- 320x420 cm

## SPECIAL SIZES

- max width 320 cm
- max length 420 cm

## SHAPES



## DELIVERY

- standard sizes: 2 weeks
- special sizes: 3 weeks



silver



taupe



olive



bronze





# Mystic

## QUALITY

- acrylic, polyester, viscose, cotton
- chenille - 1540g/m<sup>2</sup> - 3,5 mm
- machine made - Belgium

## STANDARD SIZES

- 170x230 cm
- 200x300 cm
- 240x340 cm
- 320x420 cm

## SPECIAL SIZES

- max width 320 cm
- max length 420 cm

## SHAPES



[back to index](#)

## DELIVERY

- standard sizes: 2 weeks
- special sizes: 3 weeks



navy



anthracite



grey



aubergine





# Rabat

## QUALITY

- acrylic, polyester, viscose, cotton
- chenille - 1540g/m<sup>2</sup> - 3,5 mm
- machine made - Belgium

## STANDARD SIZES

- 170x230 cm
- 200x300 cm
- 240x340 cm

## SPECIAL SIZES

- max width 240 cm
- max length 340 cm

## SHAPES



[back to index](#)

## DELIVERY

- standard sizes: 2 weeks
- special sizes: 3 weeks



silver grey



blue taupe



green taupe



gold





[back to index](#)

# Nuance

## QUALITY

- acrylic, polyester, viscose, cotton
- chenille - 1540g/m<sup>2</sup> - 3,5 mm
- machine made - Belgium

## STANDARD SIZES

- 170x230 cm
- 200x300 cm
- 240x340 cm

## SPECIAL SIZES

- max width 240 cm
- max length 340 cm

## SHAPES



## DELIVERY

- standard sizes: 2 weeks
- special sizes: 3 weeks



green



olive



silver



grey





# Grunge

## QUALITY

- acrylic, polyester, viscose, cotton
- chenille - 1540g/m<sup>2</sup> - 3,5 mm
- machine made - Belgium

## STANDARD SIZES

- 170x230 cm
- 200x300 cm
- 240x340 cm
- 320x420 cm

## SPECIAL SIZES

- max width 320 cm
- max length 420 cm

## SHAPES



[back to index](#)

## DELIVERY

- standard sizes: 2 weeks
- special sizes: 3 weeks



old pink



beige



metallic



anthracite





# Grunge

## QUALITY

- acrylic, polyester, viscose, cotton
- chenille - 1540g/m<sup>2</sup> - 3,5 mm
- machine made - Belgium

## STANDARD SIZES

- 170x230 cm
- 200x300 cm
- 240x340 cm
- 320x420 cm

## SPECIAL SIZES

- max width 320 cm
- max length 420 cm

## SHAPES



## DELIVERY

- standard sizes: 2 weeks
- special sizes: 3 weeks



silver



aqua



rust



wine red





# Meda

## QUALITY

- acrylic, polyester, viscose, cotton
- chenille - 1540g/m<sup>2</sup> - 3,5 mm
- machine made - Belgium

## STANDARD SIZES

- 170x230 cm
- 200x300 cm
- 240x340 cm

## DELIVERY

- standard sizes: 2 weeks

[back to index](#)



beige



rust



denim



wine red





# Meda

## QUALITY

- acrylic, polyester, viscose, cotton
- chenille - 1540g/m<sup>2</sup> - 3,5 mm
- machine made - Belgium

## STANDARD SIZES

- 170x230 cm
- 200x300 cm
- 240x340 cm

## DELIVERY

- standard sizes: 2 weeks

[back to index](#)



silver



grey



metallic



old pink





# Bolzano

## QUALITY

- acrylic, polyester, viscose, cotton
- chenille - 1540g/m<sup>2</sup> - 3,5 mm
- machine made - Belgium



[back to index](#)

## STANDARD SIZES

- 170x230 cm
- 200x300 cm
- 240x340 cm

## SPECIAL SIZES

- max width 240 cm
- max length 340 cm

## SHAPES



## DELIVERY

- standard sizes: 2 weeks
- special sizes: 3 weeks



beige



bronze



army green



grey





# Geometrics

## QUALITY

- acrylic, polyester, viscose, cotton
- chenille - 1540g/m<sup>2</sup> - 3,5 mm
- machine made - Belgium

## STANDARD SIZES

- 170x230 cm
- 200x300 cm
- 240x340 cm

## DELIVERY

- standard sizes: 2 weeks

[back to index](#)



coates grey



infini taupe



rombina beige/black



nika silver





[back to index](#)

# Diamo

## QUALITY

- acrylic, polyester
- chenille - 1150g/m<sup>2</sup> - 3,5 mm
- machine made - Belgium

## STANDARD SIZES

- 155x230 cm
- 200x300 cm

## SPECIAL SIZES

- max width 200 cm
- max length 300 cm

## SHAPES



## DELIVERY

- standard sizes: 2 weeks
- special sizes: 3 weeks



IN- AND OUTDOOR USE



brown



cognac



ice



silver





# Freek

## QUALITY

- polypropylene, PES
- chenille - 1080g/m<sup>2</sup> - 3 mm
- machine made - Belgium

## STANDARD SIZES

- 160x230 cm
- 200x300 cm

## DELIVERY

- standard sizes: 2 weeks

[back to index](#)



IN- AND OUTDOOR USE



carbon



green



silver



taupe





# Ecstasy

## QUALITY

- polypropylene, PES
- chenille - 1080g/m<sup>2</sup> - 3 mm
- machine made - Belgium

## STANDARD SIZES

- 160x230 cm
- 200x300 cm

## DELIVERY

- standard sizes: 2 weeks

[back to index](#)



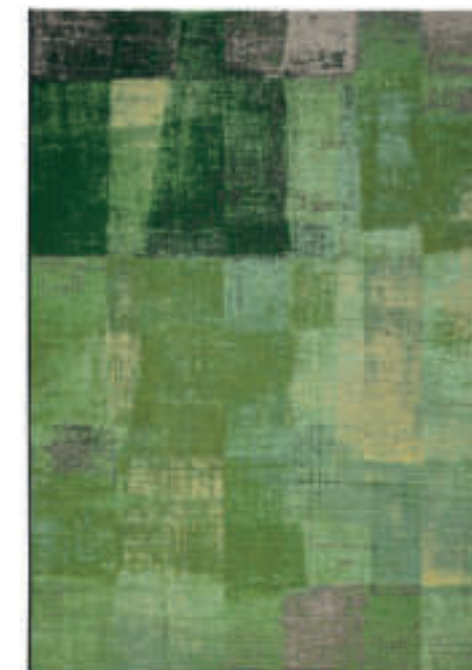
IN- AND OUTDOOR USE



grey/black



red



green



multicolour







# Handmade collection

81



Unique, luxury, handwoven,  
honest and ecological products



# Elba

## QUALITY

- wool, cotton
- handloom - 2500g/m<sup>2</sup> - 10 mm
- handwoven - India

## STANDARD SIZES

- 160x230 cm
- 200x290 cm
- 240x340 cm

## DELIVERY

- standard sizes : 2 weeks

[back to index](#)



white



beige



brown



dark brown





# Kreta

## QUALITY

- modified polyester, PET, cotton
- handloom - 4920g/m<sup>2</sup> - 22 mm
- handwoven - India



[back to index](#)

## STANDARD SIZES

- 160x230 cm
- 200x290 cm
- 240x340 cm

## SPECIAL SIZES

- minimum 3m<sup>2</sup>
- max width 390 cm

## SHAPES



## DELIVERY

- standard sizes: 2 weeks
- special sizes: 3 weeks



beige



cream



mouse grey



warm grey





# Pella

## QUALITY

- modified polyester, PET, cotton
- handloom - 3000g/m<sup>2</sup> - 42 mm
- handwoven - India



[back to index](#)

## STANDARD SIZES

- 160x230 cm
- 200x290 cm
- 240x340 cm

## SPECIAL SIZES

- minimum 3m<sup>2</sup>
- max width 390 cm

## SHAPES



## DELIVERY

- standard sizes: 2 weeks
- special sizes: 3 weeks



champagne



green mix



taupe



white





# Ravenna

## QUALITY

- wool, viscose, cotton
- pitloom - 2900g/m<sup>2</sup> - 20 mm
- handwoven - India

## STANDARD SIZES

- 160x230 cm
- 200x290 cm
- 240x340 cm

## DELIVERY

- standard sizes: 2 weeks

[back to index](#)



green mix



silver



taupe



white





# Napoli

## QUALITY

- wool, viscose, cotton
- handloom - 3900g/m<sup>2</sup> - 15 mm
- handwoven - India

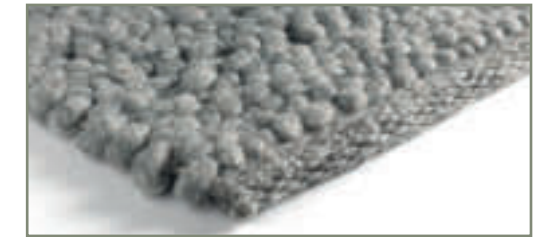
## STANDARD SIZES

- 160x230 cm
- 200x290 cm
- 240x340 cm

## DELIVERY

- standard sizes: 2 weeks

[back to index](#)



grey



natural mix



silver



taupe





# Kingstown

## QUALITY

- wool, cotton
- handloom - 3500g/m<sup>2</sup> - 20 mm
- handwoven - India

## CUSTOM SIZES

- minimum 3m<sup>2</sup>
- maximum 500x800 cm

## SHAPES



## DELIVERY

- special sizes: 8 weeks

[back to index](#)



grey



beige



natural





# Newton

## QUALITY

- wool, cotton
- handloom - 3500g/m<sup>2</sup> - 20 mm
- handwoven - India

## CUSTOM SIZES

- minimum 3m<sup>2</sup>
- maximum 500x800 cm

## SHAPES



## DELIVERY

- special sizes: 8 weeks

[back to index](#)



white



grey



anthracite





# Westport

## QUALITY

- wool, cotton
- handloom - 4000g/m<sup>2</sup> - 20 mm
- handwoven - India

## CUSTOM SIZES

- minimum 3m<sup>2</sup>
- maximum 500x800 cm

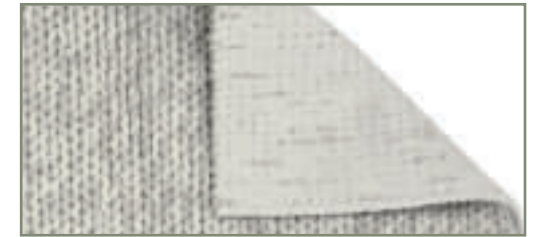
## SHAPES



## DELIVERY

- special sizes: 8 weeks

[back to index](#)



white



beige



grey





# Madeira

## QUALITY

- PET yarn
- handwoven - 1700g/m<sup>2</sup> - 6 mm
- handwoven - India

## STANDARD SIZES

- Ø 150 cm
- Ø 200 cm

## DELIVERY

- standard sizes: 2 weeks

[back to index](#)



beige/grey/white



anthracite/grey/white

IN- AND OUTDOOR USE











**Aciento bv**

Luipaardstraat 12 - 8500 Kortrijk - Belgium

+32 (0)56 51 45 71

info@aciento.com

**www.aciento.be**