

# Apartments & Services



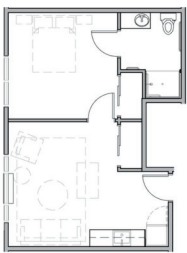
## About Stephen's Place

Stephen's Place offers independent, semi-independent, and supported living apartments for adults who are neurodivergent.

Our community is designed to provide residents as much independence as possible while providing support and a safety net as needed.

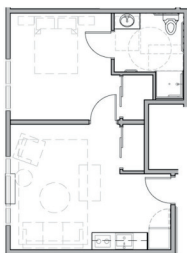
## 2024 Rent and Support Fees

Studio  
**\$4,800**



310-330 sq ft

1-Bedroom  
**\$5,000**



460-493 sq ft

Premium 1-Bedroom  
**\$5,100**



605-740 sq ft



### Team Approach

- 24/7 Safety & Support
- Health & Wellness
- Employment Support
- Volunteer Programming
- Group Transportation
- Individualized Care Plans
- Daily Activities & Programming

### Independent Living Skills

- Personal Care
- Laundry & Cleaning
- Budgeting
- Shopping
- Cooking
- Goal Setting

### Amenities

- Yearly Trips
- Community Board
- Modern Design
- Spacious Interiors
- In Unit Kitchenettes
- Safety Bathrooms
- Walk-in Bathtub
- Property Security
- Medical Administration
- Call System for Emergencies & Support
- Wellness Room
- Meeting Rooms + Private Dining Room
- 3 Meals + 2 Snacks a Day
- Horticultural Therapist
- Arts & Crafts
- Gym & Fitness
- Games Area
- Library
- TV Lounge with Popcorn Maker
- Outdoor Courtyard with BBQ