



TARNI
RESOURCES

CAPABILITY STATEMENT

2023



CONNECTING COMMUNITIES WITH OPPORTUNITIES



ABOUT US

Tarni Resources connects indigenous communities with meaningful opportunities, no matter the distance.

Our services, including Remote Rideshare, LTL Transport and Consulting & Advisory, together with our strategic partnerships network, combine to offer a unique 360° approach to doing business. Not only do we directly employ and engage with indigenous community members, but we also promote and provide opportunities for indigenous-owned businesses to deliver services, increasing indigenous engagement across a number of Australian sectors.

OUR ORIGINS

We acknowledge and pay respect to the past, present and future Traditional Custodians and Elders of this nation and the continuation of cultural, spiritual and educational practices of Aboriginal and Torres Strait Islander peoples.

The word 'Tarni' means *breaking waves* in the Kaurna language, which can be adapted to *changing the tide*, or *breaking the mould*.

Through our work, our relationships with indigenous communities and our experienced partner network, we aim to break waves and bring about positive change for indigenous people and businesses.

OUR IMPACT

THROUGH OUR WORK AND OUR APPROACH, WE AIM TO ADDRESS:

1. The geographical and cultural divides between remote communities and employment opportunities, and the current lack of reliable, effective and financially viable commuting options to work sites.
2. The lack of people, assets and service providers available to engage in an activity that provides remote communities with improved ease of access.
3. The widespread inconsistency in organisations meeting their indigenous land use and native title obligations to surrounding remote communities.
4. The requirement for flexible work arrangements, which allow Indigenous employees to meet their work, family and/or community obligations.
5. Recruitment and workplace policies that facilitate an Indigenous-friendly working environment that ensures Indigenous people have an equal opportunity to gain employment.
6. Facilitation of pre-employment assessments and tailored training to prepare Indigenous job-seekers for employment.



WUNDARLE
ABORIGINA



OUR SERVICES

REMOTE RIDESHARING

Our Remote Ridesharing service addresses the challenges of providing remote indigenous communities and regional industrial hubs with reliable, effective and financially viable passenger transport options to employment sites.

With support from our strategic partner network, we can offer a fleet of vehicles and a team of skilled drivers to provide dependable, effective commuting options to bridge the divides, both cultural and geographical.

Our services include:

Community Travel Support

Two-way 'door to door' transport services between remote Indigenous communities and places of employment, town centres for essential services, or other needs transport.

Heritage Survey Transport

Culturally sensitive transport for elders and community members to carry out native title surveyance

Airport/Site Transfers

Airport-to-site or Site-to-Site personnel transfers for mining operators & contractors

LTL TRANSPORT

Our fit-for-purpose fleet of LV's extends our services to provide time-sensitive, point-to-point LTL transport. Our direct hotshot services get your urgent consignments on the road and on-site as soon as possible, helping to minimise downtime and avoid costly delays to your operations.

OUR SERVICES CONT.

CONSULTING & ADVISORY

We work closely with organisations to first understand their situation and goals, before assisting them to develop culturally responsive strategies to improve Indigenous participation, engagement, and employment.

We work directly with internal stakeholders to:

- Understand the organisations history, existing gaps, and goals
- Address these by implementing effective processes within the organisation
- Engage and educate their team/s
- Setup staff accountability measures, and,
- Provide ongoing support to ensure these changes are embedded into their organisation

Our consulting & advisory services include:

- Capacity Plans
- Indigenous Engagement & Procurement Strategies
- Cultural Competency Frameworks
- Indigenous Content for Tenders
- Frontline Community & Stakeholder Engagement
- Comprehensive Financial Management (VCFO Services)
- Strategy Development & Business Planning
- Executive Coaching & Leadership Development
- Micro-business & Start-Up Support

Our team has extensive experience working with private, government, corporate and not-for-profit organisations across Australia to provide **meaningful opportunities for Indigenous communities.**



PARTNERSHIPS & INDIGENOUS SUPPLY CHAIN

We believe that a strong and well-connected Indigenous supply chain fosters social and economic empowerment throughout the regions in which we work. By championing this, we aim to increase indigenous employment and progress our commitment to closing the gap.

ORIGIN HSE

WORK HEALTH & SAFETY + LABOUR HIRE PARTNER

Origin HSE is part of a group of Supply Nation certified organisations, offering work health and safety (WHS) consultancy solutions with a serious commitment to WHS best practices. Origin HSE provides an all-encompassing range of WHS consulting solutions, including safety audits, WHS risk assessments, and incident evaluations. In addition, they also specialise in WHS labour hire, assisting with the recruitment of WHS managers, advisors, trainers, and auditors.

Their experience and expertise in this space positions them as one of WA's industry-leading providers in WHS management services. We work directly with Origin HSE's team to ensure staff members are engaged, safe, and empowered.

<https://www.originhse.com.au>

RAC

BUSINESSWISE - FLEET ROADSIDE ASSISTANCE PARTNER

RAC has been serving Western Australians for over 115 years, establishing themselves as one of the most trusted and recognised organisations in the state. As a purpose-led organisation, RAC actively reinvests its profits into the wider WA community, committing to champion change that leads to a safer, sustainable and connected future for Western Australians. The principles of social purpose and member value are at the heart of RAC, which aligns with Tarni's mission to bring opportunities to communities, no matter the distance.

BusinessWise by RAC will provide Tarni Resources with roadside assistance for our fleet of vehicles and drivers across the state, providing critical support and confidence to our drivers, and Tarni's capacity more broadly.

<https://rac.com.au/about-rac>

OUR TEAM



ZACH GREEN

Director, Indigenous Engagement

Zach is a proud Gundjimtara (South-west Victoria) and Palawa (Tasmania/Flinders Island) man, born and raised in Victoria.

Zach has spent the majority of his career working in Indigenous Affairs for some of Australia's largest companies, advising and using his voice to improve indigenous rights and working conditions.

Zach's role is to ensure the business operates in a culturally appropriate manner. By implementing and maintaining effective engagement strategies, Zach ensures the needs of our First Nation's people are held paramount in all dealings.



JAMES TURNER

Director, Finance & Operations

James is a seasoned transport & logistics executive boasting both high-level operational and commercial capabilities. James' experience spans line haul operations, oversize & over mass logistics, bulk haulage, and most importantly passenger transport.

Sharing Zach's passion to improve rights and working conditions, James' role is to ensure the business operates in an effective and sustainable manner and remains a driving force for change for Aboriginal and Torres Strait Islander peoples.



SUSTAINABILITY

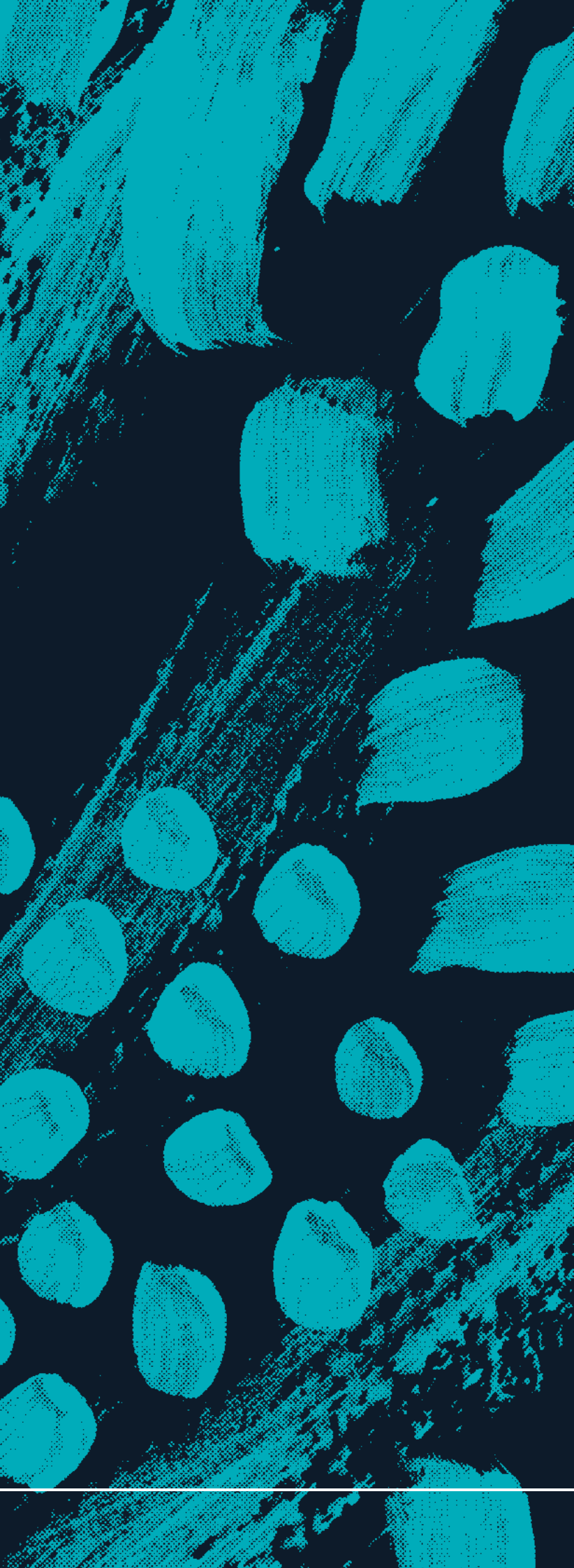
Tarni Resources aims to be a force for good for our people, our partners and our planet.

We are driven to make a positive impact on current and future generations. To achieve this, we recognise that sustainability must be a core component of the way we do business.

We are committed to making continuous improvements to our sustainability initiatives across our entire organisation.

To achieve this, we will be constantly monitoring:

- Opportunities to move towards an entirely electric fleet of vehicles in the future
- Options to measure and offset our carbon emissions
- The sustainability initiatives of our network of strategic partners
- The health and wellbeing of our people, and more.



CONTACT US

To learn more or discuss how we can help you, get in touch with our team today via the contact details below.

We look forward to hearing from you.

ZACH GREEN

0492 163 397

zach@tarniresources.com.au

JAMES TURNER

0460 632 753

james@tarniresources.com.au

Level 4/30-34 Charles St, South Perth, WA