



Evolution in Locks

Product Lines

Quality & History

Since 1965 we have contributed to the hardware industry with our knowledge, expertise & underlying goal of constant development that guarantees quality & recognition of our products; which have been approved by American & International standards.



gaab.locks



@gaablocks



gaab locks



gaab locks



JAQUE



INDEX

Page 1-7
RIM PANIC

Page 8
EMERGENCY EXIT PAD
CLOSING SELECTOR FOR DOUBLE DOORS

Page 9-10
EXTERNAL HANDLE ACCESSES

Page 11
DOOR LOCKS

Page 12
THREE POINTS LOCK
TWO POINT FLUSH BOLT

Page 13
FLUSHBOLT TWO POINTS

Page 14
GLASS DOOR LOCK
SMART LOCKS

Page 15
ACCESSORIES





PANIC EXIT DEVICE

T352



- ▶ Active push bar & back bar made of extruded aluminum
end back bar & caps made of injection aluminum
- ▶ Top and bottom strikes made of deep drawn sheet steel. Metal Bolts of 9/16" diameter and 5/8" max projection easily adjustable
- ▶ Three options length device for 36", 42" & 48". Maximum cutting 6"
- ▶ Suitable for doors up to 96" height with device mounted at 40" centerline above finished floor. For higher doors an extension or threaded rod for up to 120' is required (Available separately)
- ▶ Suitable for 1 3/4" & 2" doors thickness
- ▶ Suitable for doors with up to 3/16" style wall thickness & minimum 2 1/2" of style width is required.
- ▶ Non-handed
- ▶ Projection: 3" when fully projected, 2" when dogged
- ▶ Standard dogging with 3/16" hex key
- ▶ Suitable for use with any standard 1" to 1-1/4" length, 1-5/32 diameter mortise cylinder with MS® cam in conjunction with the escutcheon (Available separately)
- ▶ May come with switch or without switch.



COLORS

- Gray
- Black Matte
- Clear Anodized
- Dark Bronze Anodized



PANIC EXIT DEVICE

T341-04



- ▶ Push style Bar
- ▶ Rim type
- ▶ 1 point latching
- ▶ UL Listed, 3 hours Fire Rated. ANSI Grade 1
- ▶ Steel
- ▶ Measures: Length 42" - Width 6" - Height 2.5"
- ▶ Standard - Could be customized
- ▶ Non-handed for LEFT HAND or RIGHT HAND doors
- ▶ Master key option available
- ▶ Accessories: fixing screws, end cover & striker
- ▶ Modular & Reversible



▶ Stainless Steel Material



| Item | Description |
|----------|-------------------------------------|
| T341-04 | Panic Exit Device - Gray |
| T341-04S | Panic Exit Device - Stainless Steel |

PANIC EXIT DEVICE SURFACE VERTICAL ROD



PANIC EXIT DEVICE SURFACE VERTICAL ROD

T342-04

ANSI



- ▶ Push style Bar
- ▶ Rim type
- ▶ 2 point latching
- ▶ UL Listed, 3 hours Fire Rated. ANSI Grade 1
- ▶ Steel
- ▶ Measures: Length 42" - Width 6" - Height 2.5"
- ▶ Standard - Could be customized
- ▶ Non-handed for LEFT HAND or RIGHT HAND doors
- ▶ Master key system available
- ▶ Accessories: fixing screws, end cover and striker
- ▶ Modular and Reversible

▶ Stainless Steel Material



Item

Description

T342-04

Panic Exit Device Surface Vertical - Gray

T342-04S

Panic Exit Device Surface Vertical Rod - Stainless Steel



PANIC EXIT DEVICE

T341-05



- ▶ Push style Bar
- ▶ Rim type
- ▶ 1 point latching
- ▶ UL Listed, 3 hours Fire Rated. AnSI Grade 1
- ▶ Steel
- ▶ Measures: Length 42" - Width 6" - Height 2.5"
- ▶ Standard - Could be customized
- ▶ Non-handed for LEFT HAND or RIGHT HAND doors
- ▶ Master key option available
- ▶ Accessories: fixing screws, end cover & striker
- ▶ Modular & Reversible

T342-05

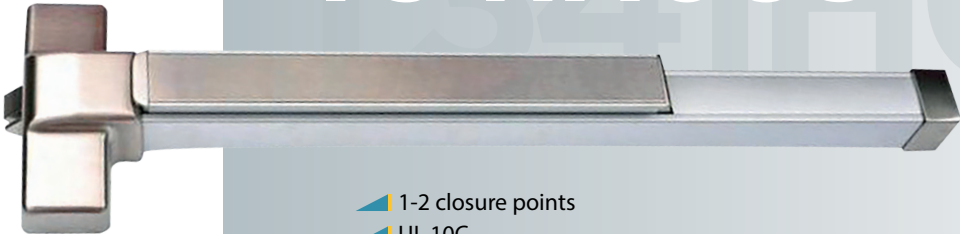


| Item | Description |
|---------|--------------------------|
| T341-05 | Panic Exit Device - Gray |
| T342-05 | Panic Exit Device - Gray |



PANIC EXIT DEVICE

T341H06S



- ▶ 1-2 closure points
- ▶ UL 10C
- ▶ Reversible
- ▶ For single and double doors
- ▶ 3 Hours Fire Rated
- ▶ Applies to wooden, aluminum and metal doors
- ▶ Applies to high traffic doors
- ▶ Profile and mobile base in folded steel
- ▶ High performance and durability paint
- ▶ Optional exit handle
- ▶ Nominal length of the device
33" length

T342H06S



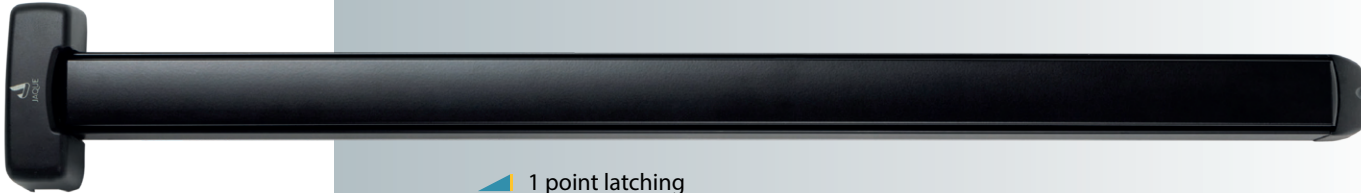
| Item | Description |
|----------|-----------------|
| T341H06S | Stainless Steel |
| T342H06S | Stainless Steel |



PANIC EXIT DEVICE



T391



- ▶ 1 point latching
- ▶ UL listed (UL 305)
- ▶ Modular & Reversible
- ▶ For single or double doors
- ▶ Suitable for metal, wood & aluminum doors
- ▶ Suitable for heavy traffic doors
- ▶ Strike (roller type)
- ▶ Extruded aluminum - made rail case and touch bar
- ▶ High performance epoxy paint finish with high strength and durability
- ▶ Optional outside trim
- ▶ Equipped with dogging / undogging function
- ▶ Total nominal length of the device:
 - Standard length: 33" (850mm)
 - Minimum length: 16" (400mm)
- ▶ Suitable for doors up to 8' (2440mm) height - 4' (1220 mm) width
- ▶ Max weight 440 lbs (200kgs)
- ▶ Dogging Function



| Item | Description |
|------|-------------|
|------|-------------|

| | |
|---------|-------------------------------|
| T391-04 | Rim Panic Exit Device - Gray |
| T391-01 | Rim Panic Exit Device - Black |



SURFACE VERTICAL ROD EXIT DEVICE



T392



- ▶ 2 point latching
- ▶ UL listed (UL 305)
- ▶ Modular & Reversible
- ▶ For single or double doors
- ▶ Suitable for metal, wood and aluminum doors
- ▶ Suitable for heavy traffic doors
- ▶ Suitable for parallel frames
- ▶ Strike (roller type)
- ▶ Front & Back casing made out of Zamak
- ▶ Extruded aluminum - made rail case and touch bar
- ▶ High performance epoxy paint finish with high strength & durability
- ▶ Optional outside trim
- ▶ Equipped with dogging / undogging function
- ▶ Total nominal length of the device:
- ▶ Standard length: 33" (850mm) Minimum length: 16" (400mm)
- ▶ Suitable for doors up to 8' (2440mm) height 4'(1220mm) width
- ▶ Max weight 440 lbs (200kgs)
- ▶ Dogging Function



Item

Description

T392-04

Surface Vertical Rod Exit Device

THREE-POINT LATCHING EXIT DEVICE



T393



- ▶ 3 point latching
- ▶ UL listed (UL 305)
- ▶ Modular & Reversible
- ▶ For single or double doors
- ▶ Suitable for metal, wood & aluminum doors
- ▶ Suitable for heavy traffic doors
- ▶ Suitable for parallel frames
- ▶ Strike (roller type)
- ▶ Zamak - made front and back covers
- ▶ Extruded aluminum - made rail case and touch bar
- ▶ High performance epoxy paint finish with high strength & durability
- ▶ Optional outside trim
- ▶ Equipped with dogging / undogging function
- ▶ Total nominal length of the device:
- ▶ Standard length: 33" (850mm) Minimum length: 16" (400mm)
- ▶ Suitable for doors up to 8' (2440mm) height 4'(1220mm) width
- ▶ Max weight 440 lbs (200kgs)
- ▶ Dogging Function



Item

Description

T393-04

Three - Point Latching Exit Device



RIM PANIC EXIT DEVICE

T300



- ▶ Approved under UNE EN-1125 standards (European)
- ▶ Approved with 200,000 opening cycles
- ▶ Modular & Reversible
- ▶ For single or double doors add (T291 series)
- ▶ Three-point latching option for single doors
- ▶ Suitable for metal, wood, aluminum & glass doors (kit for glass sold separately)
- ▶ Suitable for heavy traffic doors
- ▶ Zamak - made front and back covers
- ▶ Extruded aluminum - made rail case and touch bar
- ▶ High performance epoxy paint finish with high strength and durability
- ▶ Optional outside trim
- ▶ Equipped with dogging / undogging function
- ▶ Total nominal length of the device:
Standard length: 33" (850mm)
- ▶ Minimum length: 16" (400mm)
- ▶ Suitable for doors up to 8' (2440mm) height - 4' (1220 mm) width
- ▶ Max weight 440 lbs (200kgs)
- ▶ Doggie Function



Item

Description

T300-04

Rim Panic Exit Device - Gray

CROSSBAR EXIT DEVICES



CROSSBAR EXIT DEVICE



T290



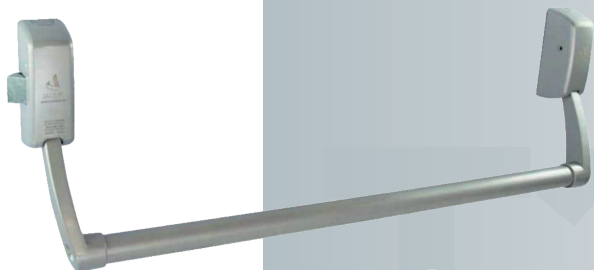
- ▶ Approved under UNE EN-1125 standards (European)
- ▶ Approved with 200,000 opening cycles
- ▶ Modular & Reversible
- ▶ Quick & easy installation
- ▶ Suitable for metal, wood, aluminum & glass doors (kit sold separately)
- ▶ High performance epoxy paint finish with high strength & durability
- ▶ Optional outside trim
- ▶ Optional switch for electromagnetic latch opening
- ▶ Crossbar tube: standard diameter: 1" (25.4 mm)
- ▶ Optional length 39" (1000 mm) and 47" (1200 mm)



| Item | Description |
|------|-------------|
|------|-------------|

| | |
|----------|-----------------------------------|
| T290-04B | Push Lever Arms - Grey |
| T005-09 | 47" (1200mm) Crossbar Tube - Grey |
| T005-04 | 39" (1000mm) Crossbar Tube - Grey |

CROSSBAR EXIT DEVICE-FIRE RATED



T295



- ▶ Approved under UNE EN-1125/1634 standards (European)
- ▶ Approved with 200,000 opening cycles
- ▶ Modular & Reversible
- ▶ Quick and easy installation
- ▶ Suitable for metal, wood, aluminum & glass doors (glass kit sold separately)
- ▶ High performance epoxy paint finish with high strength and durability
- ▶ Optional outside trim
- ▶ Crossbar tube: standard diameter: 1" (25.4 mm)
- ▶ Optional length 39" 1000 mm) and 47" (1200 mm)



| Item | Description |
|------|-------------|
|------|-------------|

| | |
|---------|-----------------------------------|
| T295-04 | Push Lever Arms Fire Rated - Gray |
| T005-09 | 47" (1200mm) Crossbar Tube - Gray |
| T005-04 | 39" (1000mm) Crossbar Tube - Gray |



EMERGENCY TOUCH PAD



T240

- ▶ Provides a quick, safe & effective exit
- ▶ Suitable for metal, wood, aluminum & glass doors (glass bed kit sold separately)
- ▶ Optional outside trim
- ▶ Quick and easy installation
- ▶ High performance epoxy paint finish with high strength and durability
- ▶ Nylon push pad
- ▶ Reversible

T242



| Item | Description |
|---------|--|
| T240-04 | Emergency Exit Touch Pad - Gray |
| T240-05 | Emergency Exit Touch Pad - Black |
| T242-04 | Emergency Exit Touch Pad - Black Red |
| T242-05 | Emergency Exit Touch Pad - Gray Gray |
| T242-08 | Emergency Exit Touch Pad - Black Black |

DOOR SEQUENCE SELECTOR FOR DOUBLE DOORS



T210

- ▶ Suitable for double doors with or without top flap
- ▶ Suitable for metal, wood & aluminum doors with side flap
- ▶ Suitable for panic exit devices
- ▶ Selector arm & support made of cold rolled sheet 4mm thick
- ▶ Blue zinc plated finish
- ▶ Nylon wheels
- ▶ Its use with door closers is mandatory
- ▶ Mandatory use for fire doors according to International standard EN-1158
- ▶ Suitable for doors up to 8' (2440 mm) height 4' (1220 mm) width
- ▶ Maximum weight 220 Lbs. (100 kgs)
- ▶ Reversible



| Item | Description |
|---------|----------------------------------|
| T210-03 | Door Sequence Selector for Doors |



OUTSIDE LEVER TRIM FOR PANIC DEVICE

T840M

- ▶ Quick and easy installation
- ▶ High performance epoxy paint finish with high strength and durability
- ▶ Schlage keyway, clutch free wheeling
- ▶ Stainless steel finish alternative
- ▶ 3 Application categories: Passage, Storeroom & Classroom
- ▶ Suitable for T341 & T342



Item Description

| | |
|---------|--|
| T840M13 | Outside with Cylinder Trim |
| T840M14 | Outside Classroom Trim Stainless Steel |
| T840M15 | Outside Classroom Trim |
| T840M16 | Outside Storeroom Trim |
| T840M17 | Outside Passage Trim |



OUTSIDE LEVER



T800M



- ▶ Suitable for metal, wood, aluminum & glass doors
- ▶ Quick & easy installation
- ▶ Suitable for T240, T391, T392, T393, T395, T290, T295 & T300 Panic Bar Series.
- ▶ High performance epoxy paint finish with high strength & durability
- ▶ Optional cylinder with ordinary or flat key
- ▶ Optional same combination key
- ▶ Optional passage style trim
- ▶ Standard key N° 71 for rekeying
- ▶ Recommended in doors with a thickness of 1.5" and 2.55"
- ▶ In case of glass doors, a specific support must be used (not included)

Item

Description

T800M14

Ordinary Key - Gray

T800M11

Classroom - Black Matte

PASSAGE LEVER TRIM



T850M



- ▶ Suitable for metal, wood, aluminum & glass doors
- ▶ Quick & easy installation
- ▶ Suitable for T240, T391, T392, T393, T395, T290, T295 & T300 Panic Bar Series.
- ▶ 4 High performance epoxy paint finish with high strength & durability
- ▶ Injected Nylon cover
- ▶ Recommended to be used in doors with a thickness of 1.5" & 2.55"
- ▶ In case of glass doors, a specific support must be used, (not included)

Item

Description

T850M04

Passage Lever Trim - Gray

PULL HANDLE TRIM



T870



- ▶ Suitable for metal, wood, aluminum & glass doors
- ▶ Quick & easy installation
- ▶ Suitable for T240, T391, T392, T393, T395, T290, T295 & T300 Panic Bar Series.
- ▶ Standard key N° 71 for rekeying
- ▶ Recommended to be used in doors with a thickness of 1.5" & 2.55"
- ▶ In case of glass doors, a specific support must be used, (not included)

Item

Description

T870-14

Pull Handle Trim - Gray



STANDARD DOOR CLOSER



R402

- ▶ UL 10C Certified 90 min
- ▶ Meet with AnSI 156.4 Grade 1
- ▶ 2 million opening cycles
- ▶ ADA: 5016 with barrier free (BF) function for elderly / handicapped
- ▶ Multi size, adjustable spring force from 1 to 6
- ▶ Rack & pinion mechanism contained in a high tensile precision, cast aluminum housing needle bearing
- ▶ Applicable to door weight between 15 to 150 KG
- ▶ Optional delay action & slim full plastic cover
- ▶ Universal application (Non-handed for standard, top jamb, or parallel arm installation)
- ▶ Included Components:
 - Bracket
 - Standard arm
 - Plastic inclined cover



| Item | Description |
|---------|---|
| R402-00 | Standard Door Closer - Fire Rated |
| R402-01 | Standard Door Closer - Dark Bronze Anodized |

HEAVY DUTY DOOR CLOSER



R403

- ▶ Heavy duty door closer, for commercial doors
- ▶ UL Certificated 10C 90min fire resistance
- ▶ AnSI GRADE1, 2 million cycles in endurance
- ▶ Precise cast iron body & forged steel arm, hold open arm optional
- ▶ Adjustable closing & latching speed
- ▶ Adjustable back-check, delay action optional - precision heavy duty rack (Piston) & pinion gear, needle bearing
- ▶ Decorative plastic cover included
- ▶ Stainless - steel cover optional
- ▶ ADA approve, barrier Free, lower opening resistance for the handicapped / elderly



| Item | Description |
|---------|--|
| R403-00 | Heavy Duty Door Closer - Fire Rated Gray |
| R403-01 | Heavy Duty Door Closer - Fire Rated Dark Bronze Anodized |
| R403-02 | Heavy Duty Door Closer - Fire Rated Black Matte |

THREE POINT LOCK FLUSHBOLT



THREE POINT LOCK



T503

- ▶ The bolt length provides maximum security for a single - leaf door
- ▶ Suitable for sliding narrow style aluminum, steel & wood (for 1 point latch only) doors in commercial, industrial & institutional buildings
- ▶ A solid hook bolt resists the sliding or revolving doors opening
- ▶ The blocking system, located in the center of the lock, provides high security against forcing attempts
- ▶ Utilizes a laminated steel short bolt, activated by a pivot mechanism to security
- ▶ 360° turn key or thumb turn projects or retracts the counterbalanced bolt. Key can be removed only when bolt is locked or unlocked position
- ▶ Lock supports any standard 1" (25.4 mm) length 1-5/32" (29.4 mm) diameter mortise cylinder. Lock supports cylinder from either or both sides
- ▶ Backset: 1-1/8" (28.6 mm), 1 1/4" (31.7mm) & 1-1/2" (38.1 mm)
- ▶ Up and bottom fixing holes are mortised and made by carbon steel sheet
- ▶ Up and bottom fixing bolts are made by laminated steel, the diameter is 9/16" & a maximum projection of 5/8" easily manual adjustable
- ▶ Suitable for doors up to 96" height mounted at 40" centerline above floor. For higher doors an extension or threaded rod up to 20" is required (Available separately)
- ▶ One or three locking points depending on the place to be fitted

FLUSHBOLT



T511

- ▶ Manual lock for hinged doors & sliding doors
- ▶ Suitable for single & double door
- ▶ Easy access
- ▶ Can be fitted on the edge or on the front or the door
- ▶ Suitable for aluminum & metal doors
- ▶ Rod extension compatible

Item

Description

T511-04

Flushbolt - Gray

T511-05

Flushbolt - Black Matte

T511-06

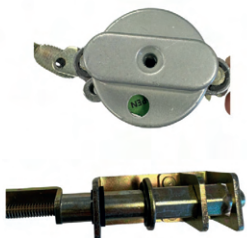
Flushbolt - White

T511-12

Flushbolt - Dark Bronze

FLUSHBOLT TWO POINT

T512



- ▶ This system is normally used in inactive sheets of double doors.
- ▶ It is operated by simply turning the knob ¼ turn clockwise.
- ▶ It is equipped with two 14mm thick locking bolts, they are project 19mm towards the frame and adjustable, quiet part of the building, and nylon seals included to prevent water ingress.
- ▶ Drive knob finishes in Grey, White, Black Matte, and Dark Bronze.
- ▶ It suitable for doors up to 2440mm, and there is a additional extension up to 3048mm in total.
- ▶ Suitable for minimum door thicknesses of 44mm with profiles uprights with a minimum width of 63mm. with wall thicknesses from 2.5mm to 3.2mm and with a maximum distance from the 38mm door edge.



SMART LOCK

R750

- ▶ Suitable for wood, aluminum or metal doors
- ▶ Suitable for doors from 13.8" to 21.7" (350 to 550mm) of width
- ▶ Measures 9.213" x 2.52" x 0.709" (234 x 64 x 18mm)
- ▶ Functions: Fingerprint, digital pad & encrypted key
- ▶ Bluetooth commanded by the TLock App (QR)
- ▶ Emergency access under frontal panel key
- ▶ Password or 6 - 2 digits
- ▶ 5v emergency power supply with micro usb
- ▶ Card reading distance 0.2" - 0.8" (5 - 20mm)
- ▶ Fingerprint recognition time: Less than 0.5 sec.
- ▶ Card type: IC ml
- ▶ 4.8V Low battery indicator
- ▶ Emergency dynamic consumption: about 150mA
- ▶ Supply voltage: 6V
- ▶ Power supply: 4 pcs AAA batteries
- ▶ Applicable temperature^o-33.8°F to 140°F



MORTISE LOCK



| Item | Description |
|---------|-------------|
| R750-04 | Smart Lock |



TEMPERED GLASS DOOR LOCK

T180



- ▶ Injected aluminum - made front & back case
- ▶ Easy installation, no cutting glass required
- ▶ Non-handed
- ▶ High performance epoxy paint finish with high strength & durability
- ▶ Suitable for tempered glass door 3/8" and 1/2" (10 mm & 12 mm thickness)
- ▶ Fully adjustable



BLACK



GRAY



WHITE



RED



PINK



YELLOW



GREEN



BLUE



Artículo

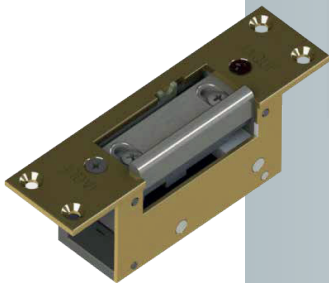
Descripción

| | |
|---------|--|
| T180-00 | Tempered Glass Door Lock - Standard Gray |
| T180-04 | Tempered Glass Door Lock - Black |
| T180-05 | Tempered Glass Door Lock - Yellow |
| T180-06 | Tempered Glass Door Lock - Red |
| T180-07 | Tempered Glass Door Lock - Pink |
| T180-08 | Tempered Glass Door Lock - Blue |
| T180-09 | Tempered Glass Door Lock - White |
| T180-11 | Tempered Glass Door Lock - Green |



ELECTRIC STRIKE DOOR - STANDARD

T705



- ▶ Zamak-made body, lever and latch-bolt
- ▶ 3/32" (2.5mm) thickness steel front
- ▶ AC 12V input voltage / 850 mA
- ▶ Permanent Unlock Option
- ▶ Equipped wire output for electrical installation
- ▶ Reversible



| Item | Description |
|---------|---|
| T705-00 | Electric Strike Door |
| T707-00 | Electric Strike Door With Permanent Unlock Option |

DOOR SEQUENCE SELECTOR FOR DOUBLE DOORS

T730



- ▶ Body, stop, latch and levers made of zamak under pressure
- ▶ 3/32" (2.5mm) thick steel front
- ▶ Input voltage of 12Vac 850mA
- ▶ Injected nylon finish
- ▶ Suitable for push and touch line devices
- ▶ Reversible



| Item | Description |
|---------|--|
| T730-01 | Electric Strike Door For Panic Exit Devices - Gray |



LATCH CASES



LATCH CASES

T291-04B

T291-05

T291

- ▶ Approved under UNE EN-1125 standards (European)
- ▶ Suitable for single & double doors
- ▶ Suitable for T300 series & T290 series
- ▶ Suitable for doors up to 8' (2440 mm) height - 4' (1220 mm) width
- ▶ Max weight 440 lbs (200 kgs)
- ▶ Suitable for steel, wood, aluminum & glass doors
- ▶ High performance epoxy paint finish with high strength and durability
- ▶ Mounting kit for glass sold separately



R352



R503



S511-03



S511-05



S511-04



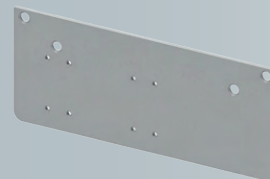
I402HOA-00 I403HOA-00



DPL402-00



DPL403-00



I352





Evolution in Locks

Commitment

We have a strong commitment to the public, to continue providing outstanding quality panic devices at competitive rates. Offering versatile engineering & unique products.

