

# vision reflection guide

START THE NEW YEAR STRONG WITH A FRESH NEW INTENTION



Leslie M. Bosserman, M.Ed., CPCC

Founder of Lead With Intention®



**2 0 2 3 I S D O N E**

**HOW DO YOU WANT TO FEEL NOW?**

AS WE START A NEW YEAR, TAKE SOME TIME  
TO CONSIDER HOW 2024 WILL CHANGE YOU.





# intentions v. resolutions

BALANCING THE **BEING** WITH THE **DOING**

While you may have a list of New Year's Resolutions, **intention setting is very different.**

**Resolutions** focus on *actions*.

**Intentions** focus on *attitudes*.

In order to make any headway on your list of resolutions and personal goals, you first need to be grounded in **how** you want to live and **what** this looks and feels like. Far too often, this becomes the afterthought or byproduct of a hurried and frazzled life, rather than the other way around.

*imagine what it would be like if your life was full of energy, motivation, ease, and flow.*

**What would be possible then?**

# my intentions + actions

WHO I NEED TO BE

WHAT I NEED TO DO

MY ACCOUNTABILITY CHECKLIST







# my fully aligned self

IF YOU FULLY EMBODIED THESE INTENTIONS,  
WHAT WOULD BE POSSIBLE FOR YOU THEN?



*leave it right here...*

WHAT DO YOU NEED TO RELEASE IN  
ORDER TO MOVE FORWARD INTO 2024?



# my 2024 vision

THIS YEAR, I WILL...

AND I WILL STOP...

SO I CAN START...



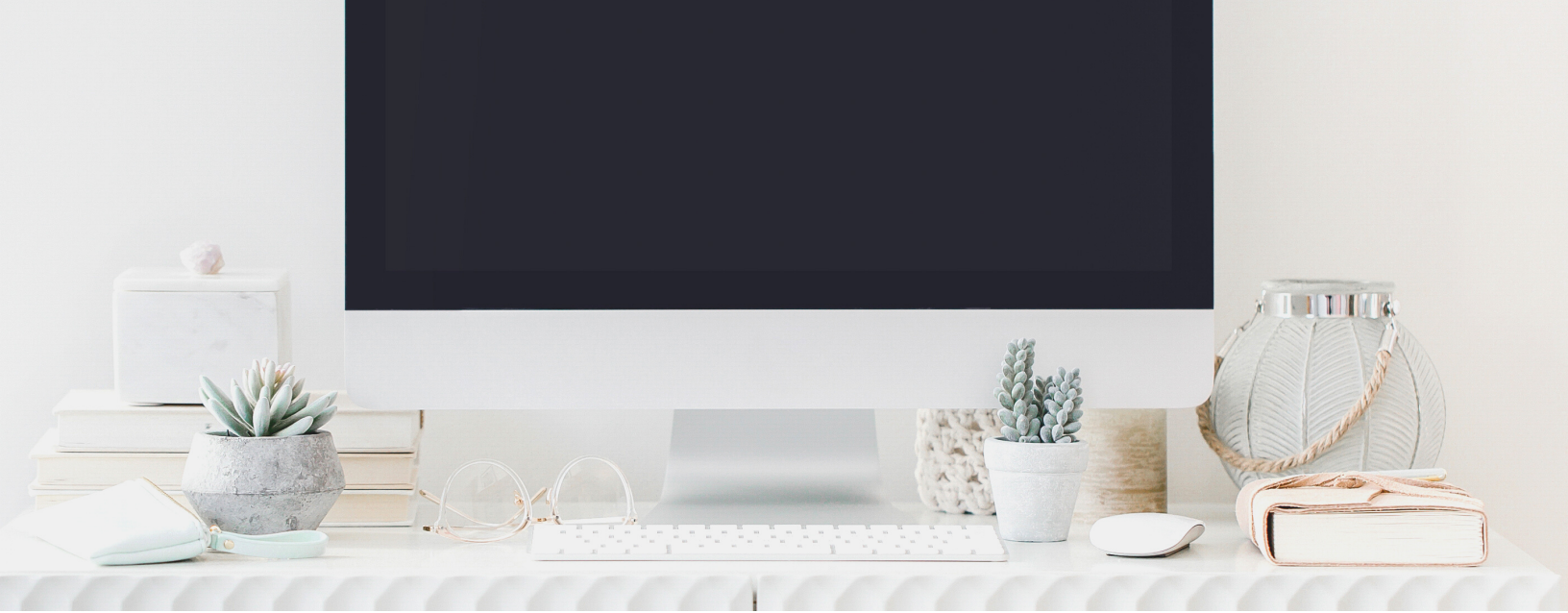


# *personal reflections*

RIGHT NOW, WHAT I NEED MOST IS...

IN SIX MONTHS, MY LIFE WILL LOOK + FEEL...





## *our community*

Lead With Intention® offers intentionally curated events for thoughtful women from one-day gatherings to boutique-style getaways. All of our offerings are designed and facilitated by Professional Coach and Leadership Strategist, Leslie Bosserman who partners with other local makers and creators to curate custom experiences for individual leaders and their teams.

## *meet the creator*

Leslie Bosserman, M.Ed., CPCC, graduated from UCLA with degrees in Communications, Education, and Applied Developmental Psychology. She also is a trained as a Certified Professional Co-Active Coach and has experience working in Higher Education in student leadership development. Leslie is the Co-Founder of The Makers Place™ where she currently serves as the Community Manager and Director of the Mini Makers™ Preschool. She also works as a Leadership Coach and Lifestyle Strategist at her boutique practice, Lead With Intention®.

## *stay in touch*

**Message:** [Leslie@LeadWithIntention.com](mailto:Leslie@LeadWithIntention.com)

**Web:** [www.LeadWithIntention.com](http://www.LeadWithIntention.com)

**Mobile:** 310.409.9240

**Social:** [@LeadWithIntention](https://www.instagram.com/LeadWithIntention)



Leslie M. Bossertman, M.Ed., CPCC

Founder of Lead With Intention®

