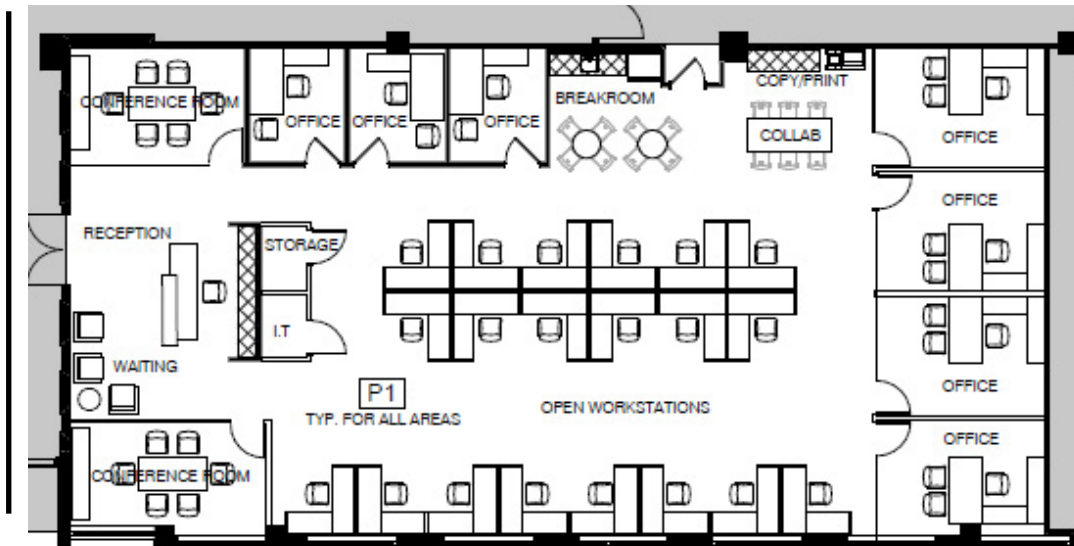




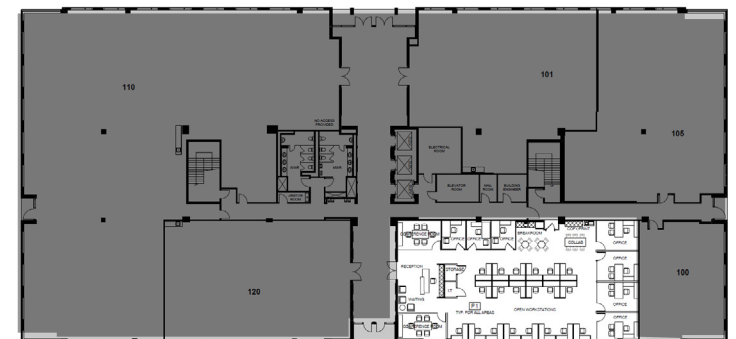
FLAGLER STATION

BUILDING 1100
10451 NW 117TH AVE

Suite 115 | 3,605 RSF



FULL FLOOR



LEASING CONTACT:

Eric Groffman
+1 786 390 7497
eric.groffman@cbre.com

Cameron Tallon
+1 407 284 7455
cameron.tallon@cbre.com

Emily Brais
+1 305 733 4092
emily.brais@cbre.com

