



Veterinary Simulator Industries

IMPROVING ANIMAL WELFARE THROUGH SIMULATION

**NEW  
PRODUCT  
RELEASES  
INSIDE**



# 2024 Product Catalogue

Building Best In Class Simulators Since 2009



VISIT US ONLINE AT [VETSIMULATORS.COM](https://www.vetsimulators.com)

## ABOUT VSI

Veterinary Simulator Industries was incorporated in 2009, specializing in creating best in class animal simulators for use in veterinary educational settings.

Dedication to continued innovation, quality and service has fueled our company's incredible growth and today, our simulators are in use in 55 countries and over 160 major educational institutions globally.

Designed in a unique partnership between professional designer/fabricators and veterinary educators our simulators provide teaching tools that are realistic in appearance, highly functional, and able to meet the rigorous demands of veterinary students and teachers.

Our simulators save veterinary educators time and money by limiting the number of teaching animals that an institution needs to keep and maintain.

Our simulators contribute to evolving testing standards. By practicing on our realistic simulators, students can build confidence and proficiency in various procedures before performing on live animals, thereby allowing the training to be a positive experience for both student and animal.

Learn more about what we do

[VETSIMULATORS.COM](https://vetsimulators.com) →



Please scan to connect to  
[VetSimulators.com](https://VetSimulators.com)

# Enhancing Animal Welfare Through Simulation.

Simulation is one of the most effective and risk-free ways to prepare veterinary students for the complexities of professional practice. Regulatory bodies as well as educational institutions are creating guidelines for performing invasive procedures on healthy live animals in teaching.

These new restrictions could potentially limit training time and access to live animals for students. Veterinary Simulator Industries is proud to manufacture veterinary simulators that provide ethical training alternatives that meet with the changing guidelines. VSI is continually developing new simulation products and constantly refining existing models based on feedback from our customers. We are proud to be a Canadian company.

## (AVMA) AMERICAN VETERINARY MEDICAL ASSOCIATION

“Simulation provides a valuable tool for developing and refining clinical and technical skills in a controlled environment. AVMA recognizes the significance of simulation in enhancing veterinary education, ensuring competency, and promoting animal welfare.”



## (AAVMC) AMERICAN ASSOCIATION OF VETERINARY MEDICAL COLLEGES

“Incorporating simulators in veterinary education aligns with our commitment to fostering competence and proficiency among veterinary professionals. Simulators offer a safe and standardized platform for honing skills critical to optimal patient care.”



## (EU) EUROPEAN UNION

“Recognizing the dynamic landscape of veterinary education, the European Union encourages the integration of simulation-based learning. Simulators contribute to the acquisition of practical skills, allowing students to navigate diverse clinical scenarios and challenges they may encounter in their professional journeys.”





## OUR MISSION STATEMENT

We manufacture best in class simulators that allow veterinary students to become proficient in their diagnostic and practical skills without the need to endanger or cause unnecessary discomfort to live animals. Our simulators intersect with curriculum requirements to provide maximum benefits to students and educators.

Learn more about us and meet our team

[VETSIMULATORS.COM](https://vetsimulators.com) →

## Awards & Accolades



Nominee for the 2018 Governor General's Innovation Award



VSI Ltd. was voted one of ten regional winners in the 2016 Small Business Challenge sponsored by the Globe and Mail and Telus



In 2015, Alberta's Venture Magazine voted Veterinary Simulator Industries Ltd. as one of Alberta's top 20 most innovative organizations



VSI Ltd. was a finalist in the Calgary Chamber of Commerce Business awards in the Innovation category in September 2014.



IMPROVING ANIMAL  
WELFARE THROUGH  
SIMULATION SINCE 2009

1.403.262.9393 | [vetsimulators.com](https://vetsimulators.com)

# Table of Contents

Equine.....	7
Bovine.....	25
Ovis.....	39
Swine.....	43
Canine.....	45
Euthanasia Training Models.....	55
Suture Training.....	59
Replacement Parts.....	61



EQUINE

NEW  
PRODUCT  
FOR 2024

Designed  
& Manufactured  
in Canada

# Equine Dystocia Simulator

With Equine Nasogastric Intubation and Neck Venipuncture w/ Intramuscular Injection

## Equine Body Features:

- Modeled as a standard 15 hand Quarter Horse
- Steel reinforced epoxy/fibreglass construction with water resistant components for ease of cleaning
- 1.36m at the shoulder and 2.44m from nose to tail. Widest point is 0.8m
- Inflatable foal air bed support system
- Clear vinyl uterine bag
- Soft durable birthing perineum panel
- Replica pelvis
- Padded fetal extractor, obstetric chain, head snare and landing mat
- Comes standard in brown
- Custom markings available upon request
- Full customer service support for installation, care and maintenance



# Equine Dystocia Simulator

## With Equine Nasogastric Intubation and Neck Venipuncture w/ Intramuscular Injection

### Day One Skills & Product Benefits:

#### Dystocia Training:

Students will gain confidence and develop familiarity with foal positioning and palpation. 34kg (75lbs) birthing foal size

- Airway for intubation tube
- Rectal palpation
- Durable, flexible and easy to clean skin
- Compatible with the equine uterus set for artificial insemination training upgrade kit and palpation of multi stage ovaries
- Realistic in size and aesthetically pleasing

#### Nasogastric Intubation and Neck Venipuncture:

The Equine Nasogastric Intubation and Neck Venipuncture/IM Injection is removable from the equine body and may be used as a standalone unit. Can be purchased separately.

- Jugular venipuncture with palpable veins that can endure multiple punctures (20 or 22 gauge needle recommended for simulation)
- Easily replaceable latex vein tubing that can endure multiple punctures; includes 5 sets of veins
- Mechanical pressurization system allows for positive pressure for blood draw
- Long lasting, easily removable, washable, replaceable hide covering with mane
- IM site that can endure multiple punctures and accept fluid injections
- Soft silicone head with flexible ears and well rendered anatomy illustrates facial injection sites and accepts a bridle
- Rolling Stand, adjustable for height, rostral tilt, and 90 degree rotation

#### REPLACEABLE PARTS:

- Birthing Perineum Panel
- Palpation Panel and Equine Uterus Set
- Standard Tail
- Uterine Bag
- Foal
- Veins
- Blood
- Neck Hide

#### UPGRADEABLE PARTS:

Artificial Insemination techniques can be practiced with the purchase of the Palpation Panel With Equine Theriogenology Uterus Set. Equine uterus set includes interchangeable ovaries.

VETSIMULATORS.COM →

Contact us at [vetsimulators.com](https://vetsimulators.com) or e-mail [consult@vetsimulators.com](mailto:consult@vetsimulators.com) for a quote.



Please scan to connect to  
VetSimulators.com

EQUINE

**NEW  
PRODUCT  
FOR 2024**

Designed  
& Manufactured  
in Canada

# Dystocia Foal Model





# Dystocia Foal Model

## Product Features:

- Fully articulated steel skeleton, with ribcage, vertebrae, pelvis and spine
- Realistic movement; durable and flexible skin and tail
- Skull with jaw, teeth, soft palate
- Esophagus for intubation and palpable anus
- Reinforced ears and forelegs with durable hooves for chaining
- Realistic 34.1kg (75 lb) weight
- Standard brown
- Custom colours and marking available at an additional cost upon request
- Foal Bag for storage and transportation

The Dystocia Foal Model is included with our Equine Dystocia Simulator

[VETSIMULATORS.COM](https://vetsimulators.com) →

Contact us at [vetsimulators.com](https://vetsimulators.com) or e-mail [consult@vetsimulators.com](mailto:consult@vetsimulators.com) for a quote.



Please scan to connect to [VetSimulators.com](https://vetsimulators.com)

EQUINE

**NEW  
PRODUCT  
FOR 2024**

Designed  
& Manufactured  
in Canada

# Equine Nasogastric & Venipuncture with IM Injection



## Technical Specifications:

- VSI metal Rolling Stand
- Durable Silicone with metal armature
- Removable head for ease of transportation, and replacement of components
- Removable/washable hide covering. Can be replaced when worn
- Comes with 5 sets of replacement veins

# Equine Nasogastric & Venipuncture with IM Injection

## Product Features:

- Replica nasal passageway that simulates anatomical structure while students practice passing the intubation tube via the esophagus
- Well rendered internal anatomy will allow the student to confirm tube placement in the esophagus via a visual reference site on the left side of the neck. Students can then continue to pass the tube into the stomach chamber
- Smell and or suction test can be performed to indicate proper placement of the tube in the stomach chamber
- Lavage technique and administration of fluids can be simulated
- Jugular venipuncture with palpable veins (18-20 gauge needle recommended for simulation).
- Easily replaceable latex vein tubing that can endure multiple punctures for simulation purposes
- Mechanical vein pressurizing system allows for positive pressure for blood draw (18-20 gauge needle recommended for simulation).
- Intramuscular site that can endure multiple punctures and accept fluid injections
- Soft silicone head with flexible ears and well rendered anatomy enables students to locate facial injection sites. Head also accepts bit & bridle
- Rolling stand, adjustable for height, rostral tilt and 90 degree rotation

## REPLACEABLE PARTS:

- Veins
- Intramuscular Pads
- Mane
- Hide Covering
- Blood
- Bloog Bag
- Stomach Chamber

**Not recommended for IV catheterization.**

[VETSIMULATORS.COM](https://vetsimulators.com) →

Contact us at [vetsimulators.com](https://vetsimulators.com) or e-mail [consult@vetsimulators.com](mailto:consult@vetsimulators.com) for a quote.



Please scan to connect to  
[VetSimulators.com](https://VetSimulators.com)

**EQUINE**

Designed  
& Manufactured  
in Canada

# Equine Palpation Colic Simulator

With Equine Neck Venipuncture  
w/ Intramuscular Injection



Developed in collaboration with



**VSI** IMPROVING ANIMAL  
WELFARE THROUGH  
SIMULATION SINCE 2009

1.403.262.9393 | [vetsimulators.com](http://vetsimulators.com)

**EQUINE**

Designed  
& Manufactured  
in Canada

# Equine Palpation Colic Simulator

With Equine Neck Venipuncture  
w/ Intramuscular Injection

[VETSIMULATORS.COM](https://vetsimulators.com) →

Contact us at [vetsimulators.com](https://vetsimulators.com) or  
e-mail [consult@vetsimulators.com](mailto:consult@vetsimulators.com)  
for a quote.



Please scan to connect to  
[VetSimulators.com](https://VetSimulators.com)

Developed in collaboration with



# Equine Palpation Colic Simulator

With Equine Neck Venipuncture  
w/ Intramuscular Injection

## ARTIFICIAL INSEMINATION SIMULATION FEATURE

### Horse Body Features:

- Modeled as a standard 15 hand Quarter Horse
- Steel reinforced epoxy/fibreglass construction with water resistant components for ease of cleaning
- 1.5m at the shoulder and 2.25m from nose to tail. Widest point is 0.6m
- 5 section inflatable latex GI Tract. Right and left ventral colon, right and left dorsal colon, and cecum. 3m section of small intestine with mount
- Spleen and left kidney attached with the renosplenic ligament.
- Palpable aorta capable of simulating a pulse
- Palpable soft uterus with cervix, urethra and broad ligament
- 3 sets of interchangeable ovaries; anestrus, estrus, and estrus with follicles
- Artificial Insemination
- Abdominocentesis function with replaceable pad; fluid reservoir and palpable linea
- Comes standard in black  
- Custom markings available upon request
- Artificial, removable tail
- Soft, durable perineum panel
- Replica polyurethane pelvis
- Inflatable vinyl rectum
- Recycled plastic base

Developed in collaboration with



UNIVERSITY OF CALGARY  
FACULTY OF VETERINARY MEDICINE

# Equine Palpation Colic Simulator

With Equine Neck Venipuncture  
w/ Intramuscular Injection

The Equine Neck Venipuncture/  
IM Injection is removable from the  
horse body and may be used as a  
stand alone unit. Can be purchased  
separately. Features include:

- Jugular venipuncture with palpable veins
- Easily replaceable latex vein tubing that can endure multiple punctures; includes 5 sets of veins
- Mechanical system allows the veins to be pressurized
- Long lasting, easily removable, washable, replaceable hide covering with mane
- IM site that can endure multiple punctures and accept fluid injections
- Soft silicone head with flexible ears and well rendered anatomy illustrates facial injection sites and accepts a bridle
- Rolling Stand, adjustable for height, rostral tilt, and 90 degree rotation

## REPLACEABLE PARTS:

- Abdominocentesis pad
- GI Tract
- Perineum Panel with Equine Uterus Assembly
- Ovaries
- Spleen
- Kidney
- Aorta
- Veins
- Intramuscular Pads
- Mane and Hide
- Equine Uterus
- Rectum Cuff
- ABS Ring

**Please note that certain components are natural latex rubber.**

Also available without the Rolling Stand. Includes a removable limb to allow compatibility with our Equine Palpation Radiology Limb, which can be added as an upgrade.

VETSIMULATORS.COM →

Contact us at [vetsimulators.com](https://vetsimulators.com) or  
e-mail [consult@vetsimulators.com](mailto:consult@vetsimulators.com)  
for a quote.



Please scan to connect to  
[VetSimulators.com](https://VetSimulators.com)



**EQUINE**

Designed  
& Manufactured  
in Canada

# Equine Neck Venipuncture & Intramuscular Injection



Developed in collaboration with



**UNIVERSITY OF CALGARY**  
FACULTY OF VETERINARY MEDICINE

**VSI** IMPROVING ANIMAL  
WELFARE THROUGH  
SIMULATION SINCE 2009

1.403.262.9393 | [vetsimulators.com](http://vetsimulators.com)



# Equine Neck Venipuncture & Intramuscular Injection

## Product Features:

- Jugular venipuncture with palpable veins
- Easily replaceable latex vein tubing that can endure multiple punctures; includes 5 sets of veins
- Mechanical system allows the veins to be pressurized
- Long lasting, easily removable, washable, replaceable hide covering with mane
- IM site that can endure multiple punctures and accept fluid injections
- Soft silicone head with flexible ears and well rendered anatomy illustrates facial injection sites and accepts a bridle
- Rolling Stand, adjustable for height, rostral tilt, and 90 degree rotation

## REPLACEABLE PARTS:

- Veins
- Intramuscular Pads
- Mane
- Hide Covering
- Blood
- Pressurized Bag

**Not recommended for IV catheterization. Recommend using a smaller needle size 18 or 20 gauge.**

An integrated model combining the Equine Neck Venipuncture and Equine Palpation / Colic Simulator is available.

[VETSIMULATORS.COM](https://vetsimulators.com) →

Contact us at [vetsimulators.com](https://vetsimulators.com) or e-mail [consult@vetsimulators.com](mailto:consult@vetsimulators.com) for a quote.



Please scan to connect to  
[VetSimulators.com](https://VetSimulators.com)



EQUINE

Designed  
& Manufactured  
in Canada

# Equine GI Tract



Developed in collaboration with



**UNIVERSITY OF CALGARY**  
FACULTY OF VETERINARY MEDICINE



IMPROVING ANIMAL  
WELFARE THROUGH  
SIMULATION SINCE 2009

1.403.262.9393 | [vetsimulators.com](http://vetsimulators.com)

# Equine GI Tract

## Product Features:

- Anatomically correct model
- 5 section inflatable latex GI tract with pump
- Right and left ventral colon, right and left dorsal colon, and cecum
- 3 m section of inflatable latex small intestine included

**Please note that certain components are natural latex rubber. Care and maintenance instructions included.**

The Equine GI Tract is included in our Equine Palpation / Colic Simulator

Available to purchase separately.

[VETSIMULATORS.COM](https://vetsimulators.com) →

Contact us at [vetsimulators.com](https://vetsimulators.com) or e-mail [consult@vetsimulators.com](mailto:consult@vetsimulators.com) for a quote.



Please scan to connect to  
VetSimulators.com

**EQUINE**

Designed  
& Manufactured  
in Canada

# Equine Radiology Limb



Developed in collaboration with



**UNIVERSITY OF CALGARY**  
FACULTY OF VETERINARY MEDICINE

**VSI** IMPROVING ANIMAL  
WELFARE THROUGH  
SIMULATION SINCE 2009

1.403.262.9393 | [vetsimulators.com](http://vetsimulators.com)

# Equine Radiology Limb

## Right Distal Forelimb

- Features a fully articulated skeleton
- The bone material is radiodense allowing for visualization using radiography techniques
- Allows movement at the carpus and fetlock joints
- Has a soft silicone skin for palpation
- Ability to attach the limb onto all new VSI Equine Palpation Colic Simulators that feature a removable distal limb, now standard on the full horse model
- Includes stand for clamping to a table

[VETSIMULATORS.COM](https://vetsimulators.com) →

Contact us at [vetsimulators.com](https://vetsimulators.com) or  
e-mail [consult@vetsimulators.com](mailto:consult@vetsimulators.com)  
for a quote.



Please scan to connect to  
[VetSimulators.com](https://VetSimulators.com)



EQUINE

Designed  
& Manufactured  
in Canada

# Equine Theriogenology Model



Developed in collaboration with



**VSI** IMPROVING ANIMAL  
WELFARE THROUGH  
SIMULATION SINCE 2009

1.403.262.9393 | [vetsimulators.com](http://vetsimulators.com)

# Equine Theriogenology Model

## Product Features:

- Rear portion of our Quarter Horse model constructed in epoxy/fiberglass
- Soft, durable perineum panel
- Inflatable vinyl rectum with pump
- Artificial, removable tail.
- Polyurethane pelvis replica
- Palpable soft uterus with cervix, urethra, and broad ligament
- 3 sets of easily interchangeable ovaries; anestrus, estrus, and estrus with follicles with storage case
- Artificial Insemination

## REPLACEABLE PARTS:

- Perineum panel with equine uterus assembly
- Ovaries
- Artificial Tail
- ABS rings
- Rectal cuff
- Uterus
- Tail

VETSIMULATORS.COM →

Contact us at [vetsimulators.com](https://vetsimulators.com) or  
e-mail [consult@vetsimulators.com](mailto:consult@vetsimulators.com)  
for a quote.



Please scan to connect to  
[VetSimulators.com](https://VetSimulators.com)

BOVINE

Designed  
& Manufactured  
in Canada

# Holstein Model Dystocia Simulator



Developed in collaboration with



UNIVERSITY OF CALGARY  
FACULTY OF VETERINARY MEDICINE

**VSI** IMPROVING ANIMAL  
WELFARE THROUGH  
SIMULATION SINCE 2009

1.403.262.9393 | [vetsimulators.com](http://vetsimulators.com)



# Holstein Model Dystocia Simulator

## Product Features:

- Modeled as a True Type Canadian Holstein Friesen
- Steel reinforced epoxy/fiberglass construction, with water resistant components throughout for ease of cleaning
- Recycled plastic base
- 1.57m at the shoulder and over 2.80m from nose to tail, 1m at widest point.
- Matching Holstein Calf included
- Inflatable calf air bed support system
- Clear vinyl uterine bag
- Soft, durable perineum panel
- Soft removable tail
- Functional udder with milk tank; ability to simulate mastitic milk and can be introduced in any quadrant
- Replica polyurethane pelvis
- Padded fetal extractor, obstetric chain and head snare
- Landing mat provided to prevent damage to calf
- Dr Franks Fetal Extractor

## REPLACEABLE PARTS:

- Birthing Perineum Panel
- Uterine Bag
- Tail
- Teats
- Calf
- Milk Tank
- Landing Mat
- Fetal Extractor
- Uterine Bag
- Calf Airbed

The Holstein Dystocia Model is also compatible with our **Bovine Theriogenology Uterus Set**

Upgrade to venipuncture & epidural tail available. See pages 38-39 for details.

[VETSIMULATORS.COM](https://vetsimulators.com) →

Contact us at [vetsimulators.com](https://vetsimulators.com) or e-mail [consult@vetsimulators.com](mailto:consult@vetsimulators.com) for a quote.



Please scan to connect to  
[VetSimulators.com](https://VetSimulators.com)

**BOVINE**

Designed  
& Manufactured  
in Canada

# Hereford Model Dystocia Simulator



Developed in collaboration with



**UNIVERSITY OF CALGARY**  
FACULTY OF VETERINARY MEDICINE



IMPROVING ANIMAL  
WELFARE THROUGH  
SIMULATION SINCE 2009

1.403.262.9393 | [vetsimulators.com](http://vetsimulators.com)

# Hereford Model Dystocia Simulator

## Product Features:

- Modeled as a True Type Canadian Hereford
- Steel reinforced epoxy/fiberglass construction, with water resistant components throughout for ease of cleaning
- Recycled plastic base
- 1.57m at the shoulder and over 2.80m from nose to tail, 1m at widest point.
- Matching Holstein Calf included
- Inflatable calf air bed support system
- Clear vinyl uterine bag
- Soft, durable perineum panel
- Soft removable tail
- Functional udder with milk tank; ability to simulate mastitic milk and can be introduced in any quadrant
- Replica polyurethane pelvis
- Padded fetal extractor, obstetric chain and head snare
- Landing mat provided to prevent damage to calf
- Dr Franks Fetal Extractor

## REPLACEABLE PARTS:

- Birthing Perineum Panel
- Uterine Bag
- Tail
- Teats
- Calf
- Milk Tank
- Landing Mat
- Fetal Extractor
- Uterine Bag
- Calf Airbed

The Hereford Dystocia Model is also compatible with our

### **Bovine Theriogenology Uterus Set**

Upgrade to venipuncture & epidural tail available. See pages 38-39 for details.

[VETSIMULATORS.COM](https://vetsimulators.com) →

Contact us at [vetsimulators.com](https://vetsimulators.com) or e-mail [consult@vetsimulators.com](mailto:consult@vetsimulators.com) for a quote.



Please scan to connect to  
[VetSimulators.com](https://vetsimulators.com)

**BOVINE**

Designed  
& Manufactured  
in Canada

# Compact Model Dystocia Simulator



Developed in collaboration with



**UNIVERSITY OF CALGARY**  
FACULTY OF VETERINARY MEDICINE



1913

**OLDS COLLEGE**



IMPROVING ANIMAL  
WELFARE THROUGH  
SIMULATION SINCE 2009

1.403.262.9393 | [vetsimulators.com](http://vetsimulators.com)

# Compact Model Dystocia Simulator

## Product Features:

- Tabletop simulator that is modeled as a Hereford
- Steel reinforced epoxy/fiberglass construction, with water resistant components throughout for ease of cleaning.
- 0.65m tall and 1.3 long, tail to bulkhead and 0.8m at widest point
- Available in brown or black
- Matching calf included
- Inflatable calf air bed support system
- Clear vinyl uterine bag
- Soft, durable perineum panel
- Soft removable tail
- Replica polyurethane pelvis
- Padded fetal extractor, obstetric chain and head snare
- Landing mat provided to prevent damage to calf
- Dr. Franks fetal extractor

## REPLACEABLE PARTS:

- Birthing Perineum Panel
- Uterine Bag
- Tail
- Calf

The Compact Dystocia Model is also compatible with our Bovine Theriogenology Uterus Set.

Upgrade to venipuncture & epidural tail available. See pages 38-39 for details.

[VETSIMULATORS.COM](https://vetsimulators.com) →

Contact us at [vetsimulators.com](https://vetsimulators.com) or e-mail [consult@vetsimulators.com](mailto:consult@vetsimulators.com) for a quote.



Please scan to connect to  
[VetSimulators.com](https://VetSimulators.com)



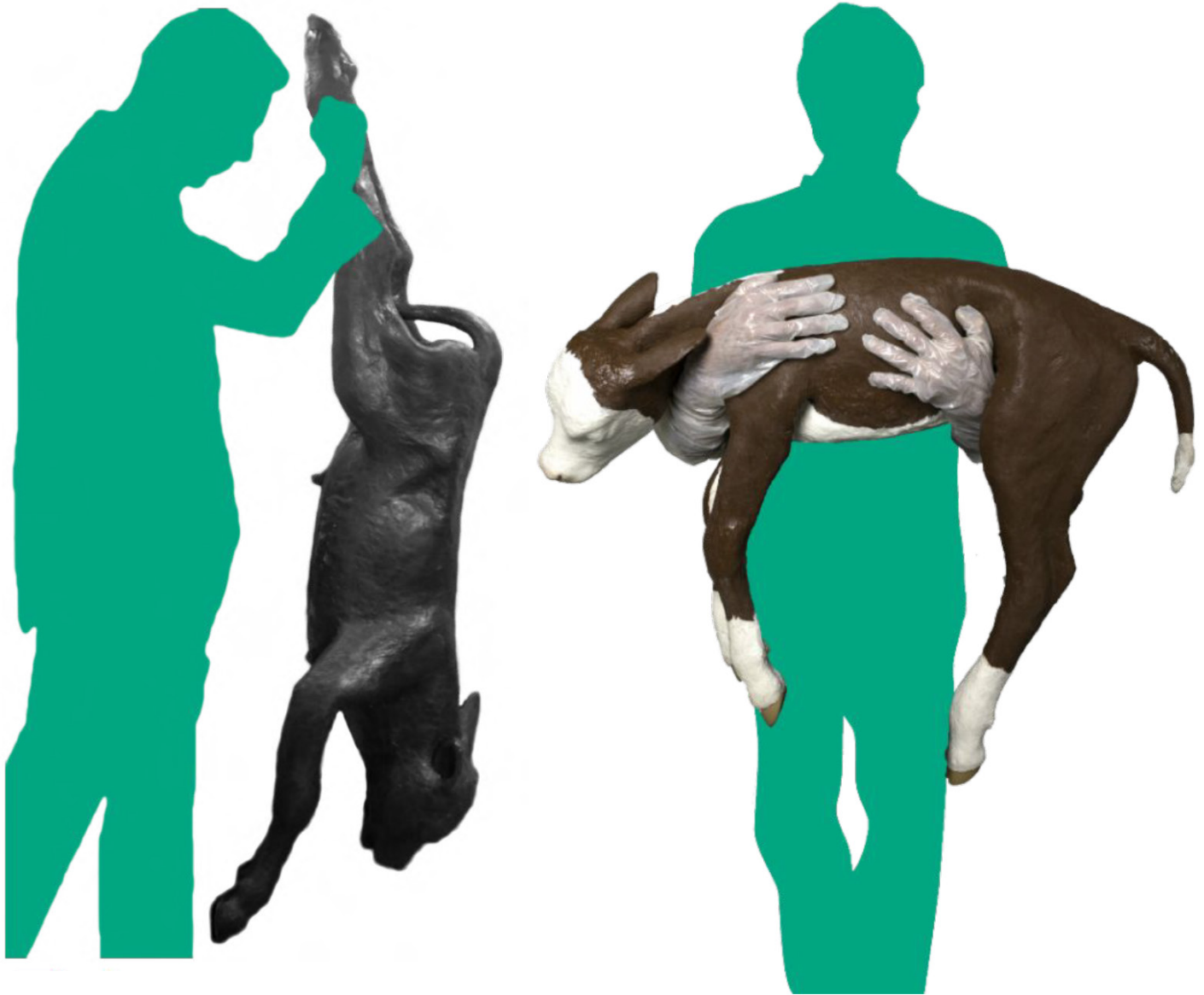
Developed in collaboration with



BOVINE

Designed  
& Manufactured  
in Canada

# Dystocia Calf Model



Developed in collaboration with



**UNIVERSITY OF CALGARY**  
FACULTY OF VETERINARY MEDICINE

**VSI** IMPROVING ANIMAL  
WELFARE THROUGH  
SIMULATION SINCE 2009

1.403.262.9393 | [vetsimulators.com](http://vetsimulators.com)

# Dystocia Calf Model

## Product Features:

- Fully articulated steel skeleton, with ribcage, vertebrae, pelvis and spine
- Realistic movement; durable and flexible skin and tail
- Skull with jaw, teeth, soft palate
- Palpable anus
- Intubation through esophagus
- Reinforced ears and forelegs with durable hooves for chaining
- Realistic 22.7kg (50 lb) weight
- Available in 4 breeds colours: Hereford, Holstein, Black and Red Angus
- Custom colours available at an additional cost
- Calf Bag for storage and transport



The Dystocia Calf Model is included with our Hereford Dystocia, Holstein Dystocia and Compact Dystocia Simulators

[VETSIMULATORS.COM](https://vetsimulators.com) →

Contact us at [vetsimulators.com](https://vetsimulators.com) or e-mail [consult@vetsimulators.com](mailto:consult@vetsimulators.com) for a quote.



Please scan to connect to [VetSimulators.com](https://VetSimulators.com)

**BOVINE**

**NEW  
PRODUCT  
FOR 2024**

Designed  
& Manufactured  
in Canada

# Bovine Venipuncture & Intramuscular Injection Model



## Technical Specifications:

- VSI metal Rolling Stand
- Durable Silicone with metal armature
- Removable head for ease of transportation, and replacement of components
- Removable/washable hide covering. Can be replaced when worn
- Comes with 5 sets of replacement veins



# Bovine Venipuncture & Intramuscular Injection Model

## Product Features:

### Jugular Venipuncture:

- Using anatomical landmarks, students will learn to seclude and palpate veins
- Endures multiple punctures and includes 5 sets of replacement veins
- Pressurized blood bag included
- Replaceable hide covering to conceal injection sites and blood draw site

### Intramuscular Injection Site:

- Well rendered anatomy illustrates injection landmarks
- Accepts fluid injections and can endure multiple punctures

### Soft Silicone Head:

- Removable and replaceable ears for tagging

### Rolling Stand:

- Adjustable for height, rostral tilt, 90 degree rotation
- Stand is compatible with other VSI products

### REPLACEABLE PARTS:

- Veins
- Intramuscular pads x2
- Hide covering
- Pressurized Blood bag
  - VSI Blood
  - Replacement Ears (L&R)

VETSIMULATORS.COM →

Contact us at [vetsimulators.com](https://vetsimulators.com) or e-mail [consult@vetsimulators.com](mailto:consult@vetsimulators.com) for a quote.

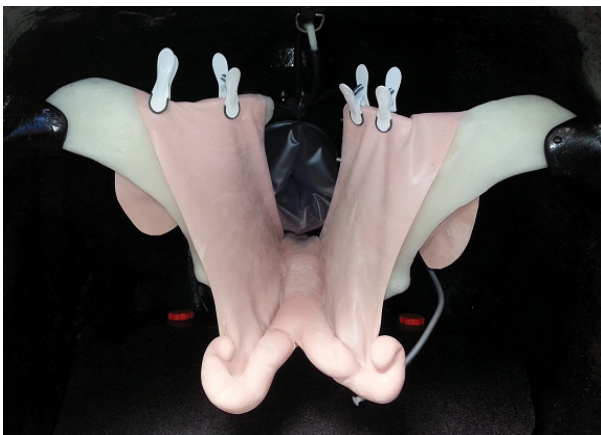


Please scan to connect to  
[VetSimulators.com](https://VetSimulators.com)

**BOVINE**

Designed  
& Manufactured  
in Canada

# Bovine Theriogenology Model



# Bovine Theriogenology Model

## Product Features:

- Rear portion of our Hereford model constructed in epoxy/fiberglass
- Constructed with pelvis, soft perineum palpation panel, inflatable vinyl rectum, and flexible tail.

Includes the Bovine Theriogenology Uterus Set (5):

- Open Cow, suitable for AI training
- Heifer, suitable for AI training
- 45 days of pregnancy, with slightly enlarged horn and amniotic vesicle
- 60 days of pregnancy, with uterine slip and fetus
- 90 days of pregnancy, with uterine slip, fetus, and placentomes
- All models have representations of the cervix, broad ligament, and ovaries
- Various representations of ovaries displaying different stages of follicles and corpus luteum

## REPLACEABLE PARTS:

- Palpation Perineum Panel
- Tail
- Each Uterus

**\*Please note that these products are made with natural latex rubber**

The Bovine Theriogenology Uterus Set is also sold separately and are compatible in our Dystocia Models with the purchase of the Palpation Panel Assembly.

Upgrade to venipuncture & epidural tail available. See pages 38-39 for details.

[VETSIMULATORS.COM](https://vetsimulators.com) →

Contact us at [vetsimulators.com](https://vetsimulators.com) or e-mail [consult@vetsimulators.com](mailto:consult@vetsimulators.com) for a quote.



Please scan to connect to  
[VetSimulators.com](https://VetSimulators.com)

**BOVINE**

Designed  
& Manufactured  
in Canada

# Bovine Theriogenology Uterus set (5)



# Bovine Theriogenology

## Uterus set (5)

### Product Features:

- **Open Cow**  
Suitable for AI training
  - **Heifer**  
Suitable for AI training
  - 45 Days of Pregnancy  
With slightly enlarged horn and amniotic vesicle
  - 60 Days of Pregnancy  
With uterine slip and fetus
  - 90 Days of Pregnancy  
With uterine slip, fetus, placentomes
  - Bovine Palpation Panel Assembly  
Enables compatibility of our Bovine
  - Bovine Ovaries Set
  - All models have representations of the cervix, broad ligament, and ovaries
  - The Uterus Set includes four different representations of ovaries displaying different stages of follicles and corpus luteum.
- Each uterus sold separately does not include ovaries; they are available for purchase as a set

**\*Please note that these products are made with natural latex rubber**

VETSIMULATORS.COM →

Contact us at [vetsimulators.com](https://vetsimulators.com) or e-mail [consult@vetsimulators.com](mailto:consult@vetsimulators.com) for a quote.



Please scan to connect to  
[VetSimulators.com](https://VetSimulators.com)

**BOVINE**

# Bovine Venipuncture & Epidural Tail

**NEW  
PRODUCT  
FOR 2024**

Designed  
& Manufactured  
in Canada

## Technical Specifications:

- Silicone tail
  - Attaches to current Bovine Dystocia and Bovine Theriogenology Model
  - Table top Stand
- Full articulation
- Replica bones
- Venipuncture and Epidural Functions
- VSI Blood
- Hide covering
- Durable and high fidelity components
- Palpable replica bones
- Venipuncture
- Epidural
  - Vacuum draw when epidural is performed

## REPLACEABLE PARTS:

- Custom VSI blood
- Replacement tubing for Epidural
- Replaceable tubing for Venipuncture
- Hide covering
- Bovine Tail stand



[VETSIMULATORS.COM](https://vetsimulators.com) →

Contact us at [vetsimulators.com](https://vetsimulators.com) or  
e-mail [consult@vetsimulators.com](mailto:consult@vetsimulators.com)  
for a quote.



Please scan to connect to  
[VetSimulators.com](https://VetSimulators.com)

# TB Caudal Fold Tail

## Product Features:

In our VSI Tuberculosis Caudal Fold Tail model, students can actively engage by observing and palpating the architecture of the tail fold in the Bovine model. This hands-on experience facilitates a prompt recognition of various responses to a positive TB test.

### THE PRODUCT INCLUDES FOUR DISTINCT STAGES:

- X1 Normal
- X1 Small Firm
- X1 Diffused
- X1 Medium Firm

Each stage is available for individual purchase, with or without a stand.

### REPLACEABLE PARTS:

- Normal Tail Hide
- Small Firm Tail Hide
- Diffused Tail Hide
- Medium Firm Tail Hide
- Bovine Tail
- Bovine Tail Stand

These tails are compatible with mounting on all VSI Bovine models.



[VETSIMULATORS.COM](https://vetsimulators.com) →

Contact us at [vetsimulators.com](https://vetsimulators.com) or  
e-mail [consult@vetsimulators.com](mailto:consult@vetsimulators.com)  
for a quote.



Please scan to connect to  
[VetSimulators.com](https://VetSimulators.com)

OVIS

# Southdown Ewe Dystocia Simulator

**NEW  
PRODUCT  
FOR 2024**

Designed  
& Manufactured  
in Canada

Simulator comes standard  
with twins.



## Technical Specifications:

- 2 female lambs (twins) included with purchase.
- Single or triplets may be purchased separately.
- 35" high, 54" in length and 18" at its widest
- Steel reinforced fibreglass model, water resistant components for easy cleaning
- Removable hatch for easy access points
- Interchangeable parts for multiple simulations
- Inflatable lamb air bed support
- Vinyl uterine bag
- Soft, durable birthing perineum panel
- Flexible removable tail
- Replica pelvis
- Head snare, landing mat
- Full customer service support for installation, care and maintenance

Developed in collaboration with





# Southdown Ewe Dystocia Simulator

## Product Features:

- Students can practice positioning the lambs in a variety of positions to accommodate for various dystocia simulations
- Udders allow students to practice tubing and cleaning procedures
- Application of simulated ointments for treatment of infection
- Lamb positioning and palpation
- Twin articulating southdown lambs included. Metal skeleton allows for appropriate force and for lambs to be positioned.
- Airway for intubation tube
- Umbilicus landmark to indicate injection site
- Full natural tail for tail docking indications
- Durable, flexible and easy to clean skin
- Compatible with the VSI Ewe Uterus Set for artificial insemination training upgrade kit
- Realistic in size and aesthetically pleasing allowing for better immersion in training scenarios



## REPLACEABLE PARTS:

- Birthing Perineum Panel
- Ewe Uterus Set
- Udders
- Standard Tail
- Uterine Bag
- Lamb

## UPGRADABLE PARTS:

- Artificial Insemination techniques can be practiced with the purchase of Ewe Theriogenology Uterus Set. Ewe uterus set includes interchangeable ovaries.

VETSIMULATORS.COM →

Contact us at [vetsimulators.com](https://vetsimulators.com) or  
e-mail [consult@vetsimulators.com](mailto:consult@vetsimulators.com)  
for a quote.



Please scan to connect to  
[VetSimulators.com](https://VetSimulators.com)

OVIS

**NEW  
PRODUCT  
FOR 2024**

Designed  
& Manufactured  
in Canada

# Dystocia Lamb

Single (Male)



Twins (Female)



Triplets (Male)



Developed in collaboration with



# Dystocia Lamb

## Product Features:

- Fully articulating steel skeleton, with ribcage, pelvis and spine allows for appropriate force when positioning
- Realistic movements; durable, flexible and easy to clean
- Skull, jaw, teeth and soft palate for realistic intubation
- Umbilicus landmark to indicate injection site
- Full natural tail for tail docking indications
- Reinforced ears and durable hooves
- Available in 3 sizes: single, twin, triplet
- Lamb bag for storage and transportation

VETSIMULATORS.COM →

Contact us at [vetsimulators.com](https://vetsimulators.com) or  
e-mail [consult@vetsimulators.com](mailto:consult@vetsimulators.com)  
for a quote.



Please scan to connect to  
[VetSimulators.com](https://VetSimulators.com)

Developed in collaboration with



SWINE

**NEW  
PRODUCT  
FOR 2024**

Designed  
& Manufactured  
in Canada

# Piglet Restraint & Blood Draw Simulator



## Technical Specifications:

- Articulating steel skeleton for realistic movements
- Anatomically correct landmarks
- Injection and jugular blood draw sites
- Simulated blood source contained within body cavity for ease of use
- Made of easily cleanable high grade silicone
- Durable hooves



IMPROVING ANIMAL  
WELFARE THROUGH  
SIMULATION SINCE 2009

1.403.262.9393 | [vetsimulators.com](https://vetsimulators.com)

# Piglet Restraint & Blood Draw Simulator

## Product Features:

### Restraint

- Articulating skeleton allows students to practice multiple restraint positions

### Injection and Blood Draw

- Anatomically correct allowing students to expose and locate the jugular groove for injection and blood draw
- Students can identify alternate blood draw and injection sites.

## REPLACEABLE PARTS:

- Veins
- Blood
- Hide

VETSIMULATORS.COM →

Contact us at [vetsimulators.com](https://vetsimulators.com) or e-mail [consult@vetsimulators.com](mailto:consult@vetsimulators.com) for a quote.

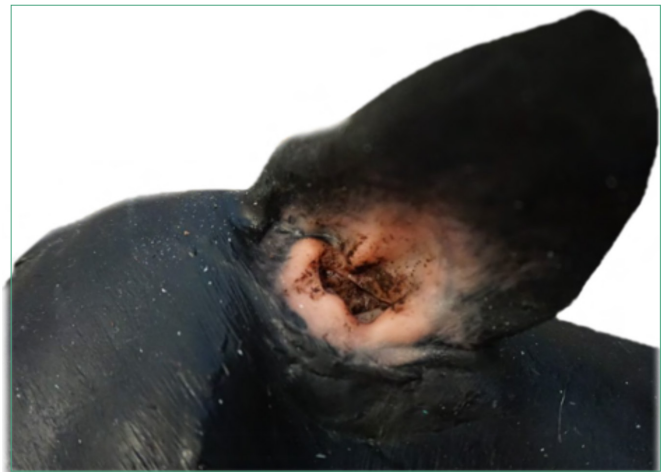
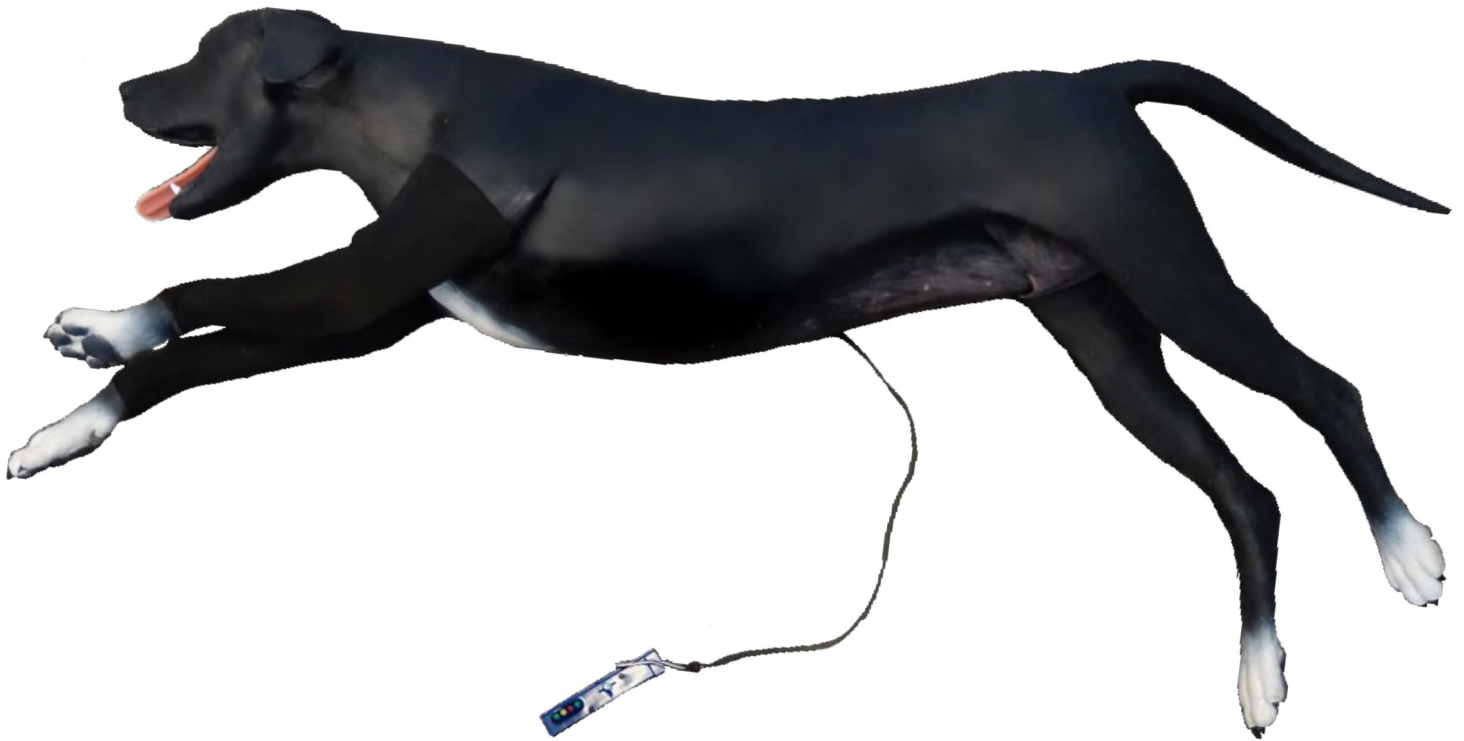


Please scan to connect to  
[VetSimulators.com](https://VetSimulators.com)

CANINE

Designed  
& Manufactured  
in Canada

# Canine Basic Life Support Simulator



# Canine Basic Life Support Simulator

## Product Features:

- Fully articulated steel skeleton with ribcage, and separated toes
- Representation of trachea and esophagus which allows for practical intubation training
- Representation of nasal passage to allow for nasogastric intubation training
- Representation of cephalic vein to practice venipuncture and catheterization in both front limbs
- Chest compression function with feedback monitor which provides feedback on speed and depth of compressions
- Representation of ear and simulated debris to practice ear cleaning techniques
- Ideal for practicing restraint and bandaging techniques
- Comes with VSI carrying bag

## REPLACEABLE PARTS:

- Tongue
- Venipuncture Tubing
- Laryngopharynx Component
- Ear Capsule (Left & Right)
- Compression Monitor
- Belly Capsule
- Leg Covering
- Venipuncture Fluid Bag
- Spring/Rib/Chest Piece

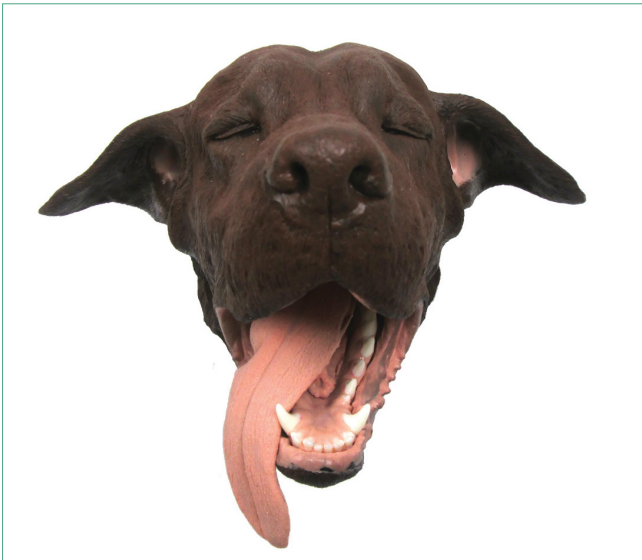
[VETSIMULATORS.COM](https://vetsimulators.com) →

Contact us at [vetsimulators.com](https://vetsimulators.com) or  
e-mail [consult@vetsimulators.com](mailto:consult@vetsimulators.com)  
for a quote.



Please scan to connect to  
[VetSimulators.com](https://VetSimulators.com)

# Canine Dental Surgical Model





# Canine Dental Surgical Model

## Product Features:

- Simulated teeth and bone are surrounded with soft rubber gums
- Allows for practical simulation including extraction of all teeth, probing, nerve blocks, as well as tongue, epiglottis, esophagus, and trachea to allow for intubation training
- Maxilla and mandible are easily replaced
- Clamp and arm for securing model to table is included

## Canine Dental Surgical Base Model:

### WHAT'S INCLUDED:

- Canine dental model in either brown or black
- Clamp and arm for securing to table
- Two extraction jaw sets

## Canine Dental Surgical Model Package:

### WHAT'S INCLUDED:

- Canine dental model in either brown or black
- Three replaceable extraction jaw sets
- Carrying case with custom foam inserts
- Clamp and arm for securing to table
- BONUS clear jaw set

### REPLACEMENT PARTS:

- Tongue
- Larynx/Pharynx
- Mandible
- Maxilla

VETSIMULATORS.COM →

Contact us at [vetsimulators.com](https://vetsimulators.com) or  
e-mail [consult@vetsimulators.com](mailto:consult@vetsimulators.com)  
for a quote.



Please scan to connect to  
[VetSimulators.com](https://VetSimulators.com)

CANINE

Designed  
& Manufactured  
in Canada

# Canine Dental Technician Model



# Canine Dental Technician Model

## Product Features:

- Simulated teeth and bone are surrounded with soft rubber gums
- Allows for practical simulation including manual and ultrasonic scaling, probing, nerve blocks, as well as tongue, epiglottis, esophagus, and trachea to allow for intubation training
- Maxilla and mandible are easily replaced
- Model comes with clamp and arm

## Canine Dental Technician Base Model:

### WHAT'S INCLUDED:

- Canine dental model in either brown or black
- 30 ml jar of artificial calculus
- One set with calculus accumulation for scaling
- One radiodense jaw set to practice positioning techniques for radiographs
- \* X-ray set has gums with periodontal ligament

## Canine Dental Technician Model Package:

### WHAT'S INCLUDED:

- Canine dental model in either brown or black
- Two replaceable scaling sets
- One replaceable x-ray set
- Carrying case with custom foam inserts
- Clamp and arm for securing to table
- BONUS clear jaw set
- 30 ml jar of artificial calculus

Jaw set consists of one mandible and one maxilla.

[VETSIMULATORS.COM](https://vetsimulators.com) →

Contact us at [vetsimulators.com](https://vetsimulators.com) or e-mail [consult@vetsimulators.com](mailto:consult@vetsimulators.com) for a quote.



Please scan to connect to  
[VetSimulators.com](https://VetSimulators.com)

CANINE

Designed  
& Manufactured  
in Canada

# Canine Bandaging Limbs



Developed in collaboration with



UNIVERSITY OF CALGARY  
FACULTY OF VETERINARY MEDICINE

**VSI** IMPROVING ANIMAL  
WELFARE THROUGH  
SIMULATION SINCE 2009

1.403.262.9393 | [vetsimulators.com](http://vetsimulators.com)

# Canine Bandaging Limbs

## Product Features:

- Represents a medium sized dog
- Features separated toes
- Durable silicone with articulated skeleton
- Solid mounting points
- Each paw has a rubber sleeve to allow for taping

VETSIMULATORS.COM →

Contact us at [vetsimulators.com](https://vetsimulators.com) or  
e-mail [consult@vetsimulators.com](mailto:consult@vetsimulators.com)  
for a quote.



Please scan to connect to  
[VetSimulators.com](https://VetSimulators.com)

CANINE

Designed  
& Manufactured  
in Canada

# Canine Spay Simulator



Developed in collaboration with



**UNIVERSITY OF CALGARY**  
FACULTY OF VETERINARY MEDICINE



IMPROVING ANIMAL  
WELFARE THROUGH  
SIMULATION SINCE 2009

1.403.262.9393 | [vetsimulators.com](http://vetsimulators.com)

# Canine Spay Simulator

## Components:

- Replaceable uterus with ovaries, broad ligament, round ligament and suspensory ligaments
- Large and small intestine with mesentery and cecum
- Spleen, kidneys and bladder
- Upper and lower thermoformed ABS plastic shell with suction cups
- Canine multi layer suture pad that features nipples and umbilicus
- Attachment pins for suture pad

## Consumable Parts:

- Canine Uterus  
with broad & suspensory  
ligaments
- Canine Suture Pad  
with nipples and umbilicus

Each Canine Spay Unit includes  
3 canine multi layer suture pads  
and 3 uteri

[VETSIMULATORS.COM](https://vetsimulators.com) →

Contact us at [vetsimulators.com](https://vetsimulators.com) or  
e-mail [consult@vetsimulators.com](mailto:consult@vetsimulators.com)  
for a quote.



Please scan to connect to  
[VetSimulators.com](https://VetSimulators.com)

# Captive Bolt Gun Training Models



Long Faced Bovine



Market Steer



Short Faced Bovine



Market Hog



# Captive Bolt Gun Training Models

## Penetrating Models

Each head includes 2 reusable silicone canisters with 4 skull / hair plates

- Long Face Bovine (Holstein)
- Short Face Bovine (Hereford)
- Market Steer (approx yearling 1000lbs)
- Sow
- Market Hog
- Market Lamb

**Rolling Stand to be purchased separately**

[VETSIMULATORS.COM](https://vetsimulators.com) →

Contact us at [vetsimulators.com](https://vetsimulators.com) or  
e-mail [consult@vetsimulators.com](mailto:consult@vetsimulators.com)  
for a quote.



Please scan to connect to  
[VetSimulators.com](https://VetSimulators.com)



Sow



Market Lamb

All head models are equipped with a reusable brain canister with skull plate and hair covering. The brain is a dimensionally accurate biological representation.

The targeting brain canisters can be removed and opened to show the shot accuracy, bolt track, depth of penetration.

# Captive Bolt Gun Training Models

## Reusable Brain Canisters

- Large Canister -  
Short Face, Long Face & Steer
- Large Skull / Hair Plate
  
- Medium Canister -  
Sow & Market Hog
- Medium Skull / Hair Plate
  
- Small Canister -  
Market Lamb
- Small Skull / Hair Plate



- Replaceable Ears\*

**\*Available only on the Short Face and Long Face Bovine models.**

[VETSIMULATORS.COM](https://vetsimulators.com) →

Contact us at [vetsimulators.com](https://vetsimulators.com) or  
e-mail [consult@vetsimulators.com](mailto:consult@vetsimulators.com)  
for a quote.



Please scan to connect to  
[VetSimulators.com](https://VetSimulators.com)

# Non-Penetrating Euthanasia Models

## Non Penetrating

3 heads are included with  
each non penetrating bolt model

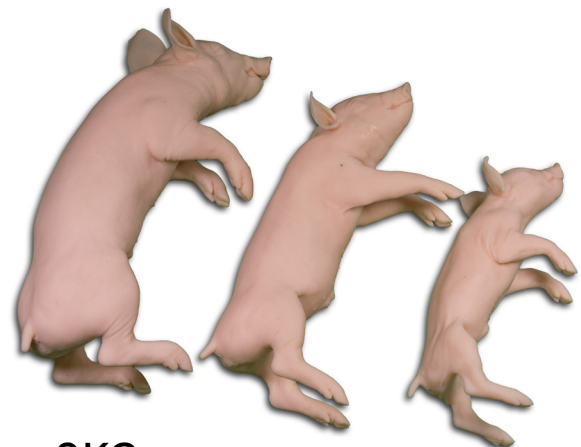
- Small 3kg Piglet (neonate)
- Medium 6kg Piglet
- Large 9kg Piglet
- Set of all 3 piglets
- 4kg Lamb

## Replaceable Heads

- Small 3kg Piglet
- Medium 6 kg Piglet
- Large 9kg Piglet
- 4kg Lamb



4KG  
Lamb



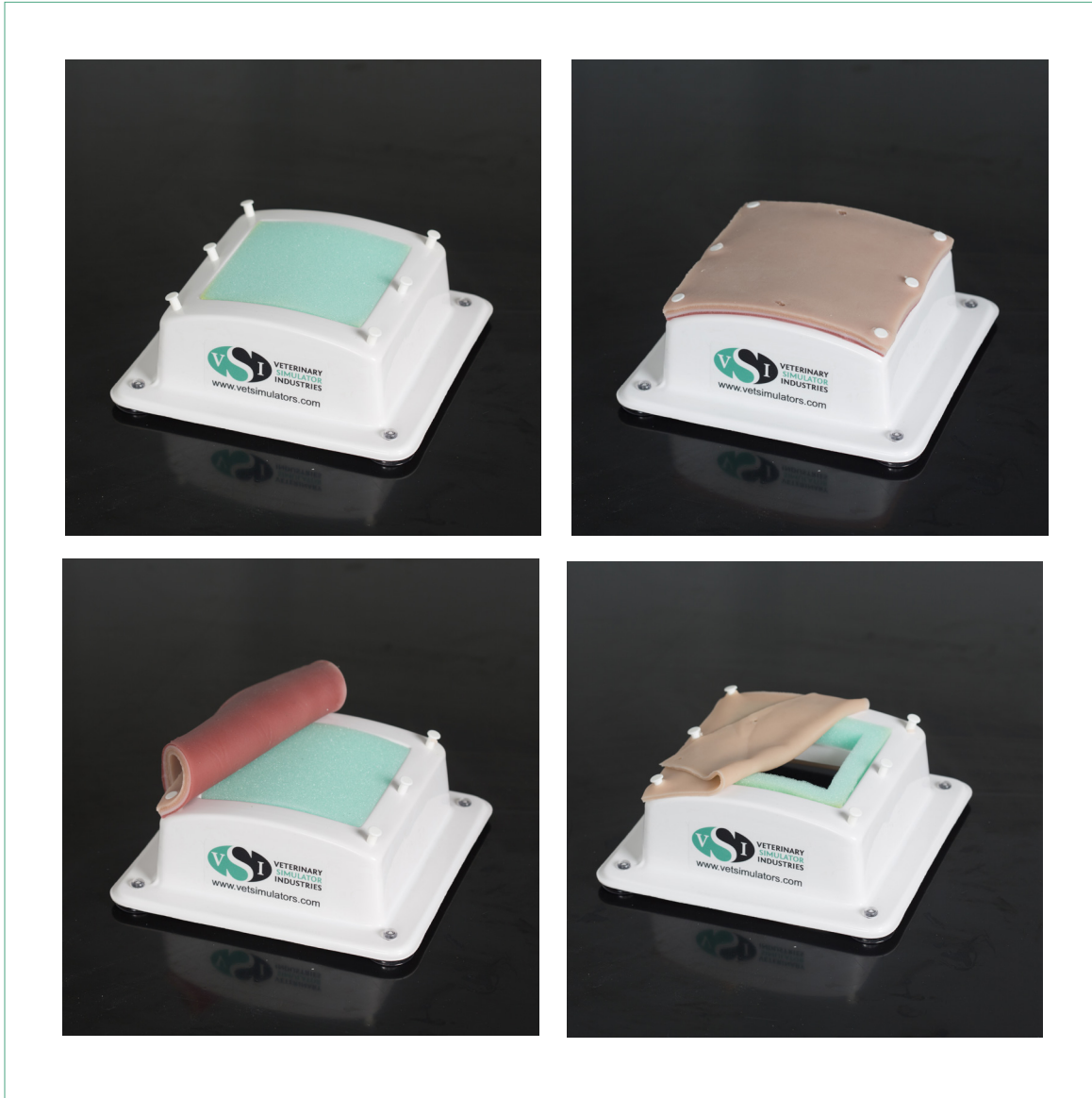
9KG      6KG      3KG  
Piglets

**Full body models have feel and weight of live animals and have replaceable heads for use with non penetrating captive bolts. Used for training animal positioning and bolt placement.**

**Each head can endure multiple shots.**

**Each body includes 3 replaceable heads.**

# Suture Pads



Developed in collaboration with



# Suture Pads

- **Multi Layer Suture Pad**
  - » Consist of four (4) layers intended to represent the dermis, subcutaneous, linea and transverse fascia
- **Canine Multi Layer Suture Pad**
  - » Feature nipples and umbilicus
  - » Consist of four (4) layers intended to represent the dermis, subcutaneous, linea and transverse fascia
- **Hollow Organ Suture Pad**
  - » Consists of one (1) layer, intended to represent a hollow organ
- **Suture Pad Base Unit**
  - » Thermoformed ABS plastic shell with suture pad attachment pins
  - » Supplied with two foam inserts. Solid foam insert is for use with the multi layer suture pad. Perimeter foam insert is for use with the hollow organ suture pad. Can be stored on the inside of the base when not in use.
  - » Has suction cups that will adhere to smooth surfaces.

[VETSIMULATORS.COM](https://vetsimulators.com) →

Contact us at [vetsimulators.com](https://vetsimulators.com) or  
e-mail [consult@vetsimulators.com](mailto:consult@vetsimulators.com)  
for a quote.



Please scan to connect to  
[VetSimulators.com](https://vetsimulators.com)

# Equine Replacement Parts



Abdominocentesis  
Belly Plug



Spleen and Kidney



Equine Uterus



Equine Ovary

# Equine Replacement Parts

- GI Tract with Small Intestine
  - Small Intestine
  - Inflatable Rectum
  - Reproductive Tract Assembly  
Includes Perineum Panel, Uterus, Rectum, Ring
  - Equine Ovaries Set (6) with case
  - Large Ovaries with Follicles (2)
  - Large Ovaries without Follicles (2)
  - Small Anestrus Ovaries (2)
  - Spleen
  - Kidney
  - Aorta
  - Abdominocentesis / Belly Tap Plug
- 
- Intramuscular Pads (2)
  - Equine Jugular Veins (10)
  - Neck Venipuncture Skin Covering

- Neck Venipuncture Skin Covering with Mane
  - Neck Venipuncture Mane
  - Equine Neck Venipuncture Fluid 0.5L
- 
- Equine Palpation Radiology Limb with Stand
  - Equine Palpation Radiology Limb without Stand
  - Equine Limb Stand

VETSIMULATORS.COM →

Contact us at [vetsimulators.com](https://vetsimulators.com) or e-mail [consult@vetsimulators.com](mailto:consult@vetsimulators.com) for a quote.



Please scan to connect to  
[VetSimulators.com](https://VetSimulators.com)

# Bovine Replacement Parts



Calf Air Bed Support



Bovine Tail



Padded Fetal Extractor



Uterine Bag



# Bovine Replacement Parts

- Hereford/Holstein Birthing Panel Assembly  
Pre assembled panel, uterine bag, ring
- Hereford/Holstein Birthing Perineum Panel
- Hereford/Holstein Uterine Bag
- Hereford/Holstein Palpation Panel Assembly  
Pre assembled panel, inflatable rectum, ring
- Hereford/Holstein Palpation Perineum Panel
- Inflatable Rectum
- Hereford/Holstein Tail
- Hereford/Holstein Epidural/Venipuncture Tail
- Hereford/Holstein Calf Air Bed Support
- Compact Calf Air Bed Support
- Hereford Teats
- Holstein Teats
- Pelvic Air Bladder
- Bovine Pelvis
- Single Color Calf Red & Black Angus
- Two Color Calf Hereford & Holstein
- Bovine Theriogenology Uterus Set (5) Including Palpation Panel Assembly
  - Open Cow Uterus
  - Heifer Uterus
  - 45 Days of Pregnancy Uterus
  - 60 Days of Pregnancy Uterus
  - 90 Days of Pregnancy Uterus
- Bovine Ovaries Set (8)
- Bovine Intramuscular Pads (2) Replacement Part
- Bovine Jugular Veins (10) Replacement Part
- Bovine Neck Venipuncture Skin Covering
- Bovine Neck Venipuncture Skin Covering with Mane
- Bovine Neck Venipuncture Mane
- Bovine Neck Venipuncture Fluid 0.5L

VETSIMULATORS.COM →

Contact us at [vetsimulators.com](https://vetsimulators.com) or  
e-mail [consult@vetsimulators.com](mailto:consult@vetsimulators.com)  
for a quote.



Please scan to connect to  
[VetSimulators.com](https://VetSimulators.com)

# Canine Replacement Parts

## Canine Dental Model

- Extraction - Mandible **RED**
- Extraction - Maxilla **RED**
- **\*Extraction jaw sets not suitable for x-ray**
- Scaling/Polishing - Mandible **BLUE**
- Scaling/Polishing - Maxilla **BLUE**
- X-ray ONLY jaw set - Mandible **GREEN**
- X-ray ONLY jaw set - Maxilla **GREEN**
- Clear jaw set  
(Maxilla, Mandible)
- 30 ml artificial calculus
- Laryngopharynx Component
- Replaceable Tongue
- Clamp/arm
- Canine Head in black or brown

**\*Crating/shipping/handling not included**



# Canine Replacement Parts

## Canine Spay Model

- Canine Uterus
- Canine Multi Layer Suture Pad
- Base Plastic Shell
- Spleen Replacement
- Kidney Replacements (2)
- Bladder Replacement
- Canine GI Tract Replacement  
Mesentary, cecum, small & large intestine

[VETSIMULATORS.COM](https://vetsimulators.com) →

Contact us at [vetsimulators.com](https://vetsimulators.com) or  
e-mail [consult@vetsimulators.com](mailto:consult@vetsimulators.com)  
for a quote.



Please scan to connect to  
[VetSimulators.com](https://vetsimulators.com)



Canine Spleen



Canine Uterus



Base Plastic Shell



Veterinary Simulator  
Industries

IMPROVING ANIMAL WELFARE  
THROUGH SIMULATION SINCE 2009



## WORLDWIDE PRESENCE

Learn more about who  
uses our products at  
[vetsimulators.com/worldwide](https://vetsimulators.com/worldwide) →

403.262.9393  
[consult@vetsimulators.com](mailto:consult@vetsimulators.com)

[VETSIMULATORS.COM](https://vetsimulators.com)



Designed  
& Manufactured  
in Canada