

DETROIT ZOOLOGICAL SOCIETY®



DETROIT ZOO • BELLE ISLE NATURE CENTER

# 2024 Amazon Rainforest Expedition

Trip 1 – March 16-24, 2024

Trip 2- March 23-31, 2024

Iquitos, Peru





## CONTENTS

- 3 Introduction
- 4 CONAPAC Programs
- 5 Testimonials
- 6 Trip One Itinerary
- 7 Trip Two Itinerary
- 8 Program Fees
- 9 Rainforest Excursions
- 11 Lodging
- 12 Frequently Asked Questions
- 13 What to Bring
- 14 Terms & Conditions

## SUMMARY

The Detroit Zoological Society and Peruvian partner, CONAPAC (Conservacion de la Naturaleza Amazonica del Peru, A.C.), work together with Amazon Explorama Lodges to facilitate the Adopt-A-School program. Over the years, the program has grown and evolved to meet the changing needs of Amazon River students, teachers and classrooms. Each year, we are excited to invite volunteers to help with the delivery of school supplies and to assist in community service projects. Join us to celebrate 30 years of supporting this incredibly diverse and beautiful part of the world.





## INTRODUCTION

### ADOPT-A-SCHOOL PROGRAM

Since its inception in 1990, CONAPAC (Conservación de la Naturaleza Amazónica del Perú, A.C.) has continually evolved to meet new challenges, from the purchase and protection of primary rainforests to the implementation of water treatment plants for clean drinking water. CONAPAC's primary focus and commitment have been the Adopt-A-School (AAS) Program in our Amazon and Napo River partner communities. Beginning in 1993, with just 10 schools, we provided books and school supplies to rural student populations. During our 2023 delivery, we served more than 100 schools in 52 different communities. Nearly 3,000 students and teachers benefitted from the supplies.

To facilitate these deliveries and Amazon Explorama Lodges provides logistical support, boat drivers and guides, and donates lodging and meals for all participants. Without their support, the Adopt-A-School Program would not be possible.

Over the years, many friends have been made through the Adopt-A-School Program, and thousands of young people have been given the opportunity to learn more about the world around them.

## TEACHER and COMMUNITY WORKSHOPS

One of the programs we are most proud of is our ongoing teacher and community leader workshops. The ability to bring teachers and community leaders together for an opportunity to learn new techniques and teaching strategies focused on environmental education is essential to broaden our goals of environmental awareness. Attendance is required for all schools in the Adopt-A-School program.

## SCHOOL KITCHENS

CONAPAC is working with rural river villages to build school kitchens in our partner communities. Currently, there are 13 school kitchens in operation. In the new kitchen/dining areas, students have a safe and clean place to eat balanced meals each school day. These kitchens complement the government-funded food program called *Qali Warma*, which promotes “healthy minds & strong children” through good nutrition.

## AGROFORESTRY

Through our partnership with The Fruit Tree Planting Foundation, thousands of tropical fruit trees have been planted in select communities to support reforestation, provide supplemental nutritional produce for family and community consumption. Depending on the harvest, families may choose to sell the produce in area markets as an additional source of income.

## CLEAN WATER TREATMENT SYSTEMS

Since 2008, CONAPAC has built treatment facilities to provide clean drinking water to rural communities in the Amazon, as well as provided individual family filtration systems in small villages with our partners from Global Access 2030. These efforts prevent the consumption of parasites and waterborne illnesses that cause malnutrition. Usage rates have increased each year as awareness is raised through water education programs and consistent monitoring by CONAPAC staff members and volunteers. A year-round program of water plant monitoring and education, called Adopt-A-Drop, is provided by CONAPAC and its donors. CONAPAC maintains a high level of service for the residents as they transition from dependence on unsafe river water to reliable access to clean, safe, purified drinking water.





## TESTIMONIALS

**Pachita, Pennsylvania:** "I love CONAPAC and everything it stands for. Whatever your passion, CONAPAC has something for you! Conservation? They're on it? Children? Education? Clean water? Economic development? I made my first trip to Peru in 2002 as a tourist. I adopted my first school. From the time I set foot off the boat in Jorge Chavez my life was changed forever. Since that first trip, I have made more than 40 trips to the Amazon. People I went to "help" became my friends. Members of the AAS team became extended family. I look so forward to spring in the Amazon, making new friends and hugging old."

**Therese, Michigan:** "I was so excited to get back to the Amazon Rainforest and the communities after a three-year hiatus. The smiles on the children's faces are priceless. This was my 8th trip down there and I will be returning again. We take things for granted like clean water. We turn on the faucet and there's the water. But they have to filter the water they get from the Amazon river daily through water filtration systems Adopt-A-School/CONAPAC has installed and the individual units that the schools have for the children to drink. The kitchens we are building for the school kids is also an amazing project I have had the fortune of helping with. Hope to see some new faces in the future joining us on an adventure that you will never forget."

# Trip One: School Supply Deliveries

## March 16-24, 2024

The first trip is dedicated to bringing school supplies to partner communities, which include close to 3,000 students and teachers from more than 100 schools. These visits celebrate education and offer opportunities for cultural exchange.

### Cost of the trip: \$1,500 per person Itinerary subject to change

Join us as we travel the Amazon and Napo Rivers, in the heart of the Peruvian Rainforest, to deliver school supplies to thousands of children and hundreds of teachers in remote, rural river villages. These school supplies will provide them the opportunity to earn a basic education and better understand how valuable the rainforest ecosystem is to the world.

Guests will have the opportunity to visit at least a dozen communities over the course of the week, participating in celebrations, songs, dances and countless smiles as a year's worth of supplies are hand-delivered to each child.

We will also experience the rainforest through excursions such as the Canopy Walkway, traditional Yagua Community visit, rainforest walks, ReNuPeRu Ethnobotanical Garden, night boat rides, and much more. An incredible experience that's not to be missed.

All lodging and accommodations are provided by: Exploraciones Amazonicas, S.A—Explorama Lodges, Avenida de la Marina 340, Iquitos, Peru. [explorama.com](http://explorama.com)

\*If you would like to fly into Iquitos a day early (March 15) and stay the night at Explorama's Jungle House in Iquitos, lodging is \$40-\$80 per night and is not included in the volunteer fee.

Day	Date	Routing	Activities	Meals Provided
1	March 16	Arrive in Iquitos by noon*	Transport to lodge, prepare supplies	L, D
2	March 17		Rainforest Excursion	B, L, D
3	March 18		School Supply Deliveries	B, L, D
4	March 19		School Supply Deliveries	B, L, D
5	March 20		School Supply Deliveries	B, L, D
6	March 21		School Supply Deliveries	B, L, D
7	March 22		School Supply Deliveries	B, L, D
8	March 23		Rainforest Excursion / CONAPAC Support	B, L, D
9	March 24	Depart Iquitos on a 5 p.m. or later flight	Transport to Iquitos / Depart	B, L

# Trip Two: School Supply Deliveries/Community Project

**March 23-31, 2024**

The second trip will deliver the remaining school supplies with four days spent in a single community for a special project.

**Cost of the trip: \$1,500 per person  
Itinerary subject to change**

Participants will spend a day delivering school supplies to children in remote, rural villages. These school supplies will provide students with the necessary supplies to go to school and learn more about the rainforest ecosystem. The next four days will be spent in a community, working alongside the community members, as we build, repair or improve structures, install water filtration systems, or provide other support as needed. This is a hands-on trip that has been deemed a life-changing experience by those that participate. Construction will be a focus in the service project but feel invited to come prepared with craft activities and games to play with the kids if swinging hammers isn't your preference. Please note that while construction skills help, they are not a requirement. We have a job for everyone!

We will also experience the rainforest through excursions such as the Canopy Walkway, traditional Yagua Community visit, rainforest walks, ReNuPeRu Ethnobotanical Garden, night boat rides, and much more.

All lodging and accommodations are provided by: Exploraciones Amazonicas, S.A—Explorama Lodges, Avenida de la Marina 340, Iquitos, Peru. [explorama.com](http://explorama.com)

\*If you would like to fly into Iquitos a day early (March 22) and stay the night at Explorama's Jungle House in Iquitos, lodging is \$40-\$80 per night and is not included in the volunteer fee.

Day	Date	Routing	Activities	Meals Provided
1	March 23	Arrive in Iquitos by noon*	Transport to lodge, prepare supplies.	L, D
2	March 24		Rainforest Excursion	B, L, D
3	March 25		School Supply Deliveries	B, L, D
4	March 26		School Supply Deliveries	B, L, D
5	March 27		Community Project	B, L, D
6	March 28		Community Project	B, L, D
7	March 29		Community Project	B, L, D
8	March 30		Rainforest Excursion / CONAPAC Support	B, L, D
9	March 31	Depart Iquitos on a 5 p.m. or later flight	Transport to Iquitos / Depart	B, L

# Adopt-A-School Program Fees

## INCLUDED IN THE TRIP FEE

### Accommodations:

Accommodations vary from rustic to comfortable in three different lodges. See page 11 for lodging information.

### Meals:

The meals indicated on the trip itinerary are served individually plated to all Explorama guests in a common dining room. Expedition volunteers will sit at tables reserved for our group. Fresh fruits and vegetables native to the area, as well as baked goods, freshly caught fish, grains, and meats will be served. The meals are well-balanced and options are available to suit most dietary needs. Any special dietary needs or allergies should be communicated to Detroit Zoological Society staff upon registering for the expedition.

### In-country Transportation:

Explorama guides will greet us at the Iquitos Airport, accompany us throughout the week, and provide all road and river transportation during the trip. They will transport us back to the Iquitos Airport for our Sunday afternoon departure from Iquitos to Lima and stay with us until we enter the boarding area at the airport. We will be transported primarily by boat with some bus and motokar rides.

### Payments:

A deposit of USD \$500 per person is required by November 1, 2023, to register as a trip volunteer. The total balance of \$1,500 is due in full 90 days prior to departure. Payments can be made by wire transfer or by major credit card.

### Children

Admitted from the age of 8 years if accompanied by a fully responsible adult.

## NOT INCLUDED IN THE TRIP FEE

### Airfare:

It is the participant's responsibility to arrange flights to arrive in Iquitos on the first morning of the trip as well as their return flights on the last day of the trip. Once in Iquitos, transportation will be provided by Explorama guides and their contracted agents.

### Luggage:

International flights limit travelers on the amount of luggage allowed. Please check with your airline for additional costs and restrictions. We ask that you dedicate some space in a large piece of luggage or an entire small piece of luggage to help carry program-related supplies. Supplies will be distributed at a pre-travel night meeting in Detroit or mailed to out-of-town participants.

### Extra Expenses:

Extra expenses include costs associated with obtaining passports, excess baggage, and personal items such as drinks, laundry, telephone calls, excursions, or deviations from the program. There will be opportunities to purchase souvenirs and gifts during the trip, however, these costs are incurred on an individual basis. Special requests and outings may incur additional charges.

### Arriving Before/Staying After the Trip:

Both trip fees include all city and river transportation within the trip dates. Some volunteers may choose to arrive or depart earlier than the set itinerary. If so, a separate transportation fee of \$150 will be the volunteer's responsibility and billed through Amazon Explorama Lodges.

### Medical Services/Vaccinations:

We are traveling to remote locations with few or no options for rapid transportation. There is a clinic near Explorama Lodge and a hospital in the city of Iquitos. Transportation to a hospital in Lima may be arranged for extreme emergencies. Bring all prescription and over-the-counter medicines with you in water-tight containers. Vaccinations are at the discretion of the participant. The CDC offers suggestions for visiting Peru at [www.cdc.gov](http://www.cdc.gov). Please consult with your primary care physician or a travel physician. New COVID restrictions may be in place by the Peruvian government, such as vaccination requirements to enter the country. Volunteers will be kept up-to-date with these important updates.

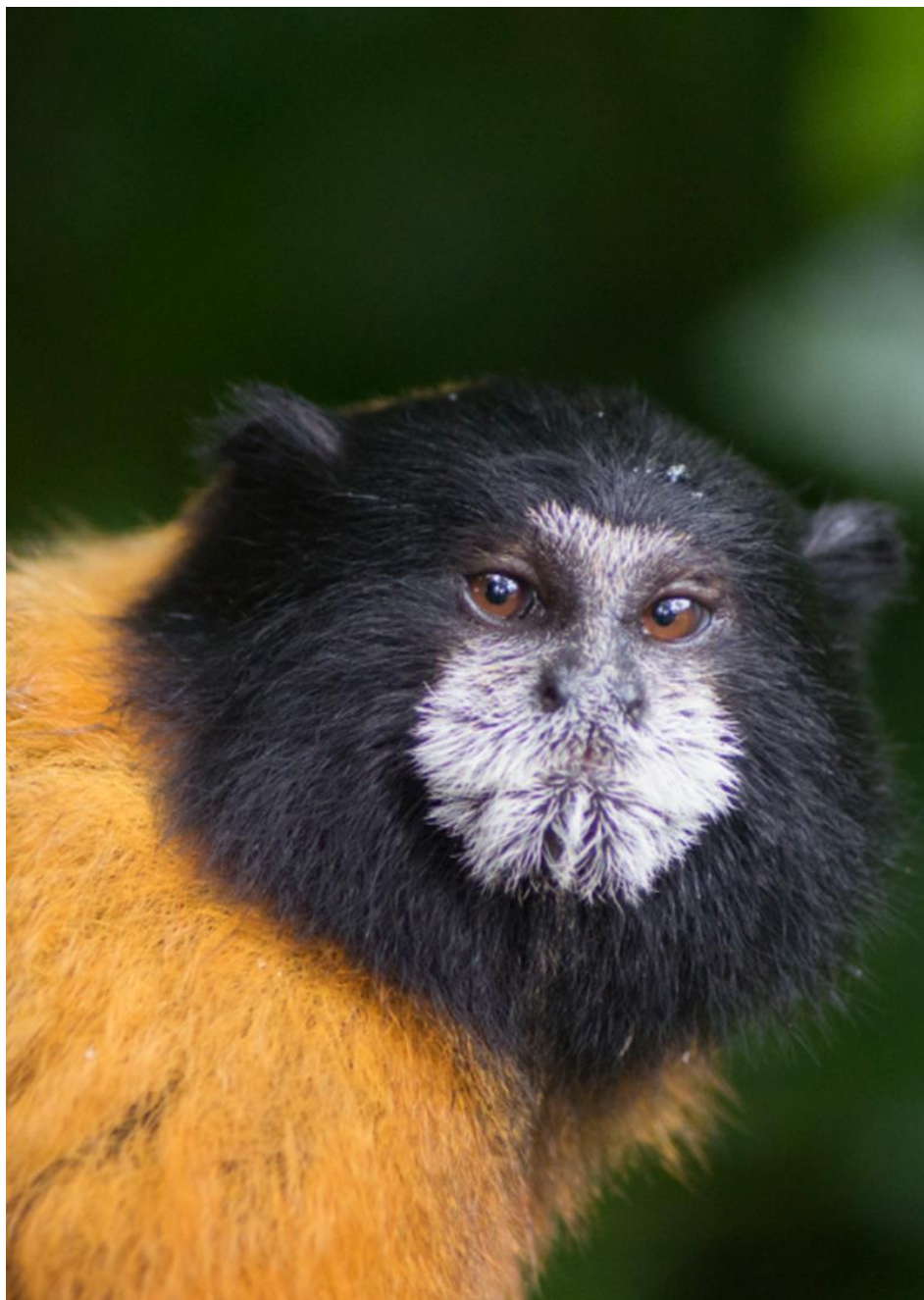


# Excursions

## CANOPY WALKWAY

The Canopy Walkway is an experience unequalled in the rainforest! At a height of over 35 meters (115 feet) and extending for 500 meters (one-third of a mile), the Canopy Walkway provides the best vantage point for observing Amazon wildlife and vegetation above the treetops and requires no special skills or equipment. The suspended walkway is spread between 14 of the area's largest rainforest trees and is one of the longest canopy walkways in the world. Regularly maintained by Explorama Lodges for the exclusive use of its guests and scientists, the Canopy Walkway has extended research into an area where little is known, and much is left to be discovered.





## More Excursions

### WILDLIFE SIGHTSEEING

Volunteers will have the option to explore the rainforest with Explorama's guides. The guides are rainforest experts who will provide more insight and information about the ecology of the rainforest and the people who call it home.

### MEDICINAL GARDEN

A short hike to the medicinal gardens provides a unique opportunity to meet the resident shaman and see the traditional healing methods of the native cultures.

### YAGUAVILLAGE

Take a trip with Explorama guides to a neighboring Yagua village for a unique cultural experience. This may include learning how to use a blow dart gun and provide you with the opportunity to purchase handmade crafts and souvenirs.

### MOLASSES and RUM DISTILLERY

A visit to a local sugar cane farm showcases traditional methods for creating delicious molasses and several flavors of rum unique to this region of the Amazon.

### PIRANHA FISHING

Give your best attempt at being an angler! Guides will take groups piranha fishing for the opportunity to put dinner on your plate that very same day.

### RELAXATION

And of course, you are also welcome to just kick back and relax in the hammocks, take a swim in the pool (Ceiba Tops), or have a cold drink in the dining hall. Additionally, Ceiba Tops now features a riverfront outdoor lounge area, air-conditioned exercise room, billiards, ping pong table, and other games for your use and pleasure in a one-of-a-kind rainforest setting.

# Lodging



## JUNGLE HOUSE

If you are arriving early or staying late, please inquire about staying in Iquitos at Explorama's newest addition, the Jungle House. This small hotel just two blocks from Iquitos's main square provides you with air-conditioned rooms, a TV, swimming pool, and complimentary breakfast.



## EXPLORNAPO

On the Napo River, 160 km/100 mi from Iquitos, EXPLORNAPO provides access to the pristine forest of Explorama's Sucusari Reserve, as well as access to the adjoining Amazon Canopy Walkway, one of the longest treetop walkways in the world. This adventure offers the opportunity to stay in an authentic Amazon River style with palm-thatched houses, rustic lighting, and healthy cooking in a rainforest surrounding. Shower and toilet facilities adjoin each house.



## EXPLORAMA LODGE

Originally built in 1964 and located in an extensive Primary Rainforest Reserve 80 km/50 mi down the Amazon River from Iquitos, Explorama Lodge has 40 typical palm-thatched jungle lodge rooms with private bathroom facilities. The lodge has maintained its romantic atmosphere with rustic lighting, mosquito-netted beds, including accommodations for couples, and covered walkways to the Tahuampa Bar and Hammock House where you can relax surrounded by a myriad of rainforest sounds.

## CEIBA TOPS

Located on the banks of the Amazon River just 40 km (25 mi) from Iquitos, Ceiba Tops offers the comforts of home, air-conditioned rooms with private bathrooms, in the most luxurious of Amazonian Rainforest settings. At Ceiba Tops, elaborate gardens, a swimming pool, water slide, hammock house, and the Esmeralda Lounge all complement the surrounding exotic environment and you can even stay in touch with your home via free Wi-Fi Internet.



For more pictures and information link to [explorama.com](http://explorama.com)

# WHAT TO BRING

## SUGGESTED CLOTHING

The average temperature in the Peruvian Amazon during Adopt-A-School trips tends to range between the mid-80s to mid-90s with high humidity. It can also be rainy, so lightweight, quick-dry clothing is optimal during your visit to the Amazon. A lightweight waterproof raincoat or poncho is also recommended.

## WATERPROOF BOOTS

The Amazon can be a very wet place. Whether the river is high or low this upcoming year, it may be wise to bring tall rubber boots or waterproof hiking boots. If requested, waterproof rubber boots can be provided for your use. A pair of flip-flops or other open-toed sandals are appropriate to wear around the lodges.

## FACE PROTECTION

UV filtering sunglasses are essential. Due to the equatorial sun, you will also need good sunblock lotion for your face (protection factor 30 and above) and lip balm. It is also advised to bring a hat and/or visor.

## PHOTOGRAPHY

During visits to the communities, you may want to photograph your experiences to share with friends and family. Bringing a waterproof camera bag is recommended due to the high humidity. To see the wildlife, you should have a good pair of lightweight binoculars (the suggested magnification is 7x or 8x). If you are passionate about photography, do not forget a good zoom lens to capture great wildlife photographs while on side excursions. Also, take with you a good supply of memory cards and spare batteries.

## AND FURTHERMORE...

*Do not forget to bring with you:*

Personal medications.

Backpack (or small day pack) to carry your belongings during deliveries, service projects, and side excursions.

Cash for tipping—please strive to bring clean, new bills without rips, tears, or markings of any kind. Most US banks can accommodate this request, exchanging older bills with new ones. Clean singles are particularly valued.

## CHECKLIST

### CLOTHING

- Sunhat or visors
- Pair of sandals or flip-flops for the lodge and showering
- Comfortable closed-toe walking shoes for jumping in and out of boats and walking on uneven, damp, or flooded ground
- Tall rubber boots
- Shorts or other comfortable hot weather clothing for the lodge
- Light, quick-dry long pants, such as convertible/zip-off pants for excursions and visiting the communities (one pair for every 2-3 days of the trip should suffice)
- Light, long-sleeve shirts or jacket for sun protection
- T-shirts or tank tops, plan on one for each day of the trip
- At least one pair of socks for each day of the trip
- Bandanna(s) for sun/insect protection
- Light rain jacket or poncho with hood
- Night (bed) attire (anticipate very warm sleeping conditions)
- Swimsuit

### ACCESSORIES

- Small, strong flashlight/headlamp
- Sunscreen
- Sunglasses
- DEET or strong insect repellent—please with no more than 40% DEET concentrate.
- Binoculars
- Camera
- Extra digital camera memory cards and batteries
- Personal care items - look for environmentally-friendly soaps and shampoos
- Medications (pack in your carry-on in water-tight containers)
- Powdered, individual hydrating drink packets
- Reusable water bottle—complimentary clean drinking water is always available at every lodge.
- Mesh bags for dirty laundry
- Resealable, water-tight bags for keeping items dry
- Work gloves and disposable protective masks if you're participating in the second trip
- Basic first-aid kit

**Pro Tip:** Bring one change of clean clothes for flying home, keeping them in an airtight plastic bag throughout your volunteer experience

# FREQUENTLY ASKED QUESTIONS

## How much baggage can one carry?

You are allowed to bring as much baggage as the international flight will allow. We ask that you reserve space in a large piece of luggage or an entire small piece of luggage to assist with transporting program materials down to Peru with us.

## What is the local currency?

The Peruvian sole is the national currency. One dollar is equivalent to approximately 3 soles but varies daily. Check closer to the trip.. Many street vendors will not accept U.S. currency. Most large airports in the States will have opportunities to exchange cash or you can order ahead from your local bank. There are also kiosks in the Lima airport for currency exchange. If you bring US money, bring fresh bills, with no rips, tears, folds, marks or writing of any kind. New bills are best.

## Are credit cards acceptable?

VISA, MASTERCARD and AMERICAN EXPRESS credit cards are accepted at all Amazon Explorama Lodges and some businesses in Iquitos. Debit cards are accepted for payment on site at Ceiba Tops only.

## What is the basic health information?

The Center for Disease Control offers suggestions on vaccines and medical preparations before a trip to Peru. Please check with your primary physician and a travel clinic for personalized care suggestions.

## Is there clean drinking water?

Drinking or using water from any tap in Peru should be absolutely avoided. Only drink bottled water. The lodges will provide free, filtered, potable water throughout your stay at Explorama Lodges. Please bring one or two reusable water bottles with you to fill at the lodges each morning.

## What are the major security concerns?

As in any other destination worldwide, normal precautions should be taken. Visitors are advised not to leave cash and valuables in their rooms at the lodges. One should never carry large sums of cash and should keep handbags or other belongings close in crowds or on busy streets. Each lodge has a secure safe in the manager's office that can be used free of charge.

## What is the local voltage?

Electricity and generated supplies in lodges provide 220-240 Volts AC 50 cycles. Each lodge should have power strips with 110V 50 cycles. Sockets are similar to those used in the United States.

## What is the local language?

Spanish is the official language. In addition, some communities that we will visit will also have their own language. Our guides will all speak fluent English, as will many of the Explorama Lodge staff and boat drivers. You will usually have access to someone who can translate for you.

## What is the weather like?

During our visit, we will experience temperatures in the high 80s to mid-90s each day. The sun is very strong as we are only 3 degrees south of the equator. It will likely rain several times during our stay, including heavy downpours and possibly thunder. The humidity is very high, 80 to 100 percent each day. Evenings are only slightly cooler, in the mid-80s range. The sun rises at 6 a.m. and sets at 6 p.m. year-round.

## How are the bugs?

There are many insects, including mosquitos. With appropriate care, including long sleeves, long pants, and insect repellent, most people are protected from a variety of insect irritations. The rainforest is home to a variety of insects, many of them larger

than we are familiar with. Most are harmless and there will be guides (who are rainforest experts) and staff available to answer questions and provide assistance.

# Trip Reservation

Please reserve space for me on your Adopt-A-School Conservation Expedition

**Trip One** - Arriving March 16 by noon in Iquitos, departing March 24, 2024, after 5 p.m.

**Trip Two** - Arriving March 23 by noon in Iquitos, departing March 31, 2024, after 5 p.m.

Enclosed is my non-refundable deposit of \$\_\_\_\_\_ (\$500 per person - Due November 1, 2023).

I understand that the total cost is \$1,500 (including deposit) and is due by January 2, 2024.

Name: \_\_\_\_\_

(Name as it exactly appears or will appear on the passport)

Address: \_\_\_\_\_

City: \_\_\_\_\_ State: \_\_\_\_\_

Zip: \_\_\_\_\_

Phone: \_\_\_\_\_

E-mail: \_\_\_\_\_

## Donation Acknowledgment:

Mail my donation acknowledgment.

E-mail my donation acknowledgment.

Deposit Information:

Check enclosed, made payable to Detroit Zoological Society  
Send to: Detroit Zoological Society, Attn: Claire Lannoye-Hall, 8450 W. 10 Mile Road, Royal Oak, MI 48067

For Visa, MasterCard, or Discover card, please call the Detroit Zoological Society at (248) 541 - 5717

Pay online at [detroitzoo.org/support/give/adopt-a-school](https://detroitzoo.org/support/give/adopt-a-school) and select the designation of Adopt-A-School.

Please fill out this form and mail it with your payment via mail or email to [amazontravel@dzs.org](mailto:amazontravel@dzs.org)

T-Shirt Size (Circle Size): S M L XL XXL XXXL

*The Detroit Zoological Society, CONAPAC and Amazon Explorama Lodges do not and shall not discriminate on the basis of race, color, religion (creed), gender, gender expression, age, national origin (ancestry), disability, marital status, sexual orientation, or military status, in any of its activities or operations.*