

WELCOME!

Thank you for joining us for the
ISW North Lawndale: Ogden Avenue
Pulaski to Roosevelt Corridor Improvements

PUBLIC MEETING #1

April 12, 2023

INTRODUCTIONS



Chicago Department of Transportation

Lubka Benak, Project Director, CDOT
Vanessa Irizarry, AICP, Project Manager, CDOT
Cody Matchen, Project Engineer, CDOT



Elected Officials

Alderwoman Scott (24th Ward)
Alderman Rodriguez (22nd Ward)
Alderman Ervin (28th Ward)



Civiltech Engineering (Lead)

Transportation Engineering

- Chris Wolff
- Lissa Sweeney
- Amanda Kleinwachter
- Zaneta Marcinik
- Mike Folkening
- Phil Hutchinson
- John Magill
- Edith Portales



Homan Grown

Community Engagement Support & Landscape Design

- Pastor Reshorna Fitzpatrick
- Annamaria Leon

Quigg Engineering (MBE)

Data Collection & Transportation Engineering

Guarino Historic Resources

Historic Preservation

GSG Consultants (MBE)

Geotechnical Engineering

Gehl

Urban Design

DB Sterlin Consultants (MBE)

Topographic Survey

Lamar Johnson Collaborative

Community Engagement & Urban Design

Singh & Associates (WBE)

Electrical and Traffic Signal Engineering

MEETING AGENDA

Brief Presentation

- 01 Project Overview
- 02 Past and Current Planning Efforts
- 03 Challenges and Opportunities
- 04 Placemaking

Your Feedback (Dining Room)

- 05 Activity Stations



PROJECT OVERVIEW

INVEST SOUTH/WEST

Supports the Invest South/West initiative to re-activate neighborhood cores that have historically served as focal points for pedestrian activity, shopping, services, transportation, public spaces and quality-of-life amenities for residents.

Part of Chicago Works: Mayor Lori E. Lightfoot's five-year capital plan that will Invest in Communities Through Infrastructure.

Streetcapes consist of infrastructure, pedestrian safety, and placemaking improvements with the goal of creating unified, safe, walkable, and attractive street. The streetscape projects are comprehensive and include public right-of-way improvements from building face to building face.

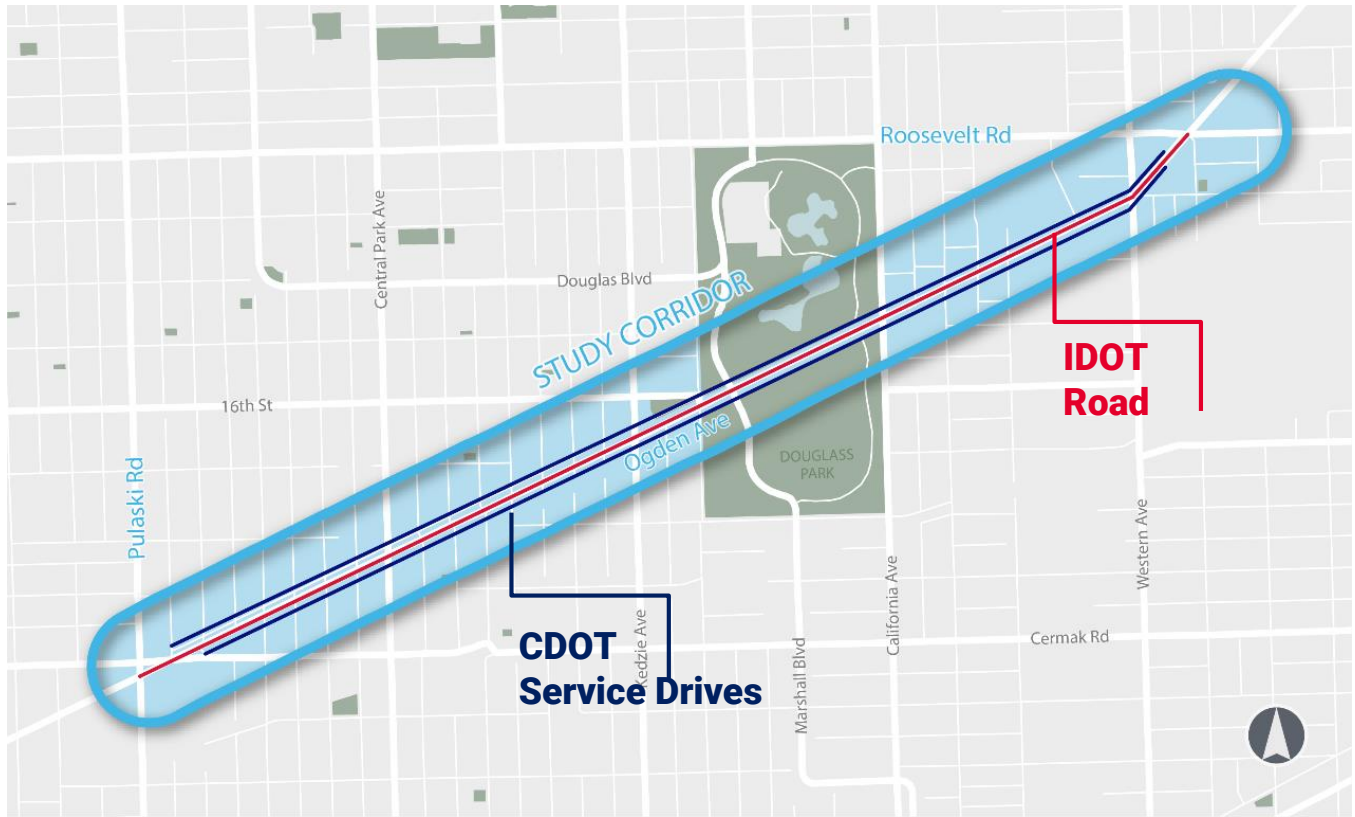
The Project Includes:

- Public Outreach
- Placemaking and urban design strategy
- Concept design & engineering
- Detailed design & engineering
- Construction of the corridor



PROJECT BOUNDARY

ISW North Lawndale: Ogden Avenue Improvements Pulaski to Roosevelt



PROJECT SCOPE



Street Geometry



Drainage Improvements



Sidewalk Improvements



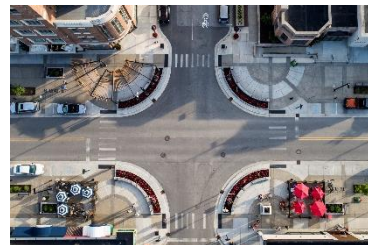
Light Pole Identifier



Road Resurfacing



Lighting



Intersection Improvements



Gateway Identifiers



Landscape/Sustainability



Seating Areas

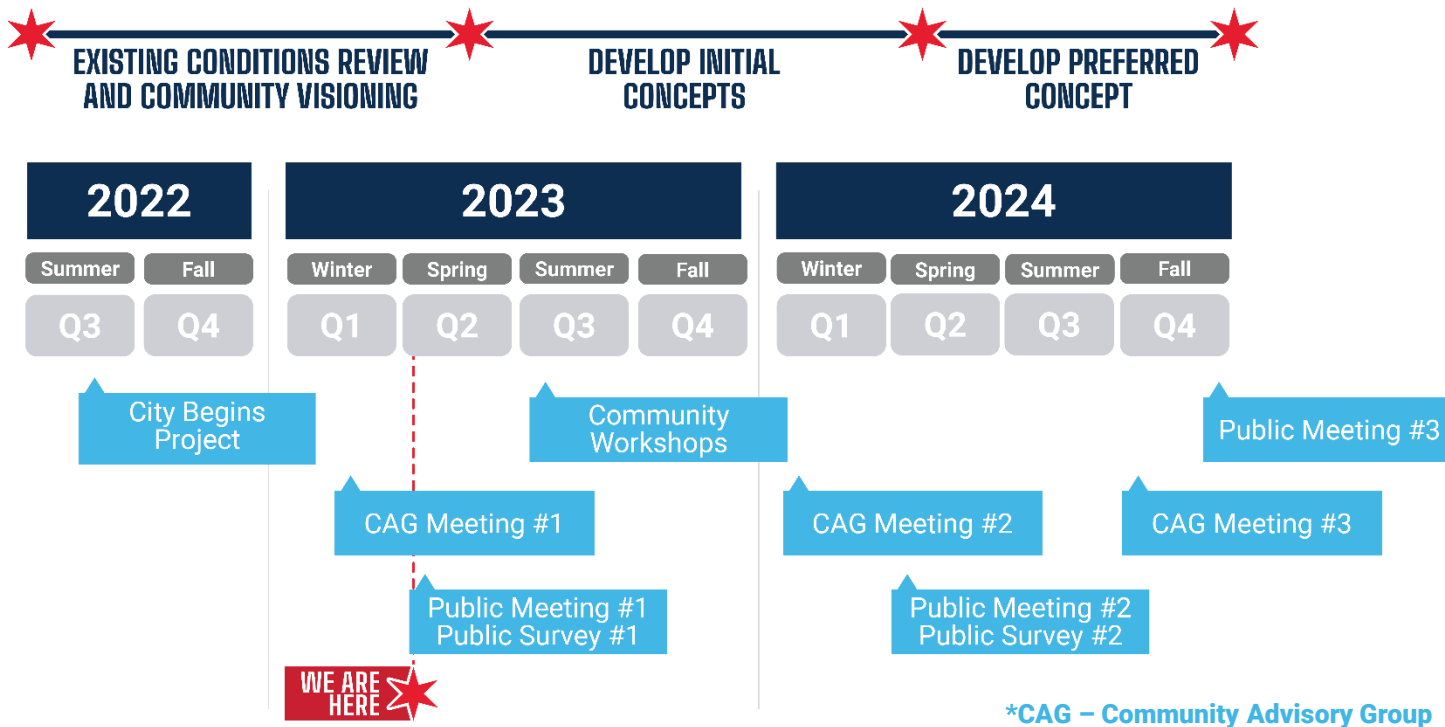


Curb Extensions / ADA Upgrades



Pavement Marking

PROJECT TIMELINE



CDOT has initiated a Phase I study of the Ogden Avenue Corridor Improvements Project in collaboration with the Illinois Department of Transportation, as Ogden Avenue is a state route. This includes community visioning, design development, preliminary engineering, and environmental clearances. The public will be engaged at every stage of the process. Phase II of the project will be the Detailed Design, during which final engineering plans are developed, followed by construction.

PROJECT OVERVIEW



This is an opportunity to reimagine Ogden Avenue as a **multimodal transportation corridor**, as a hub for **community activity**, and catalyst for **economic development**.



PAST AND CURRENT PLANNING EFFORTS

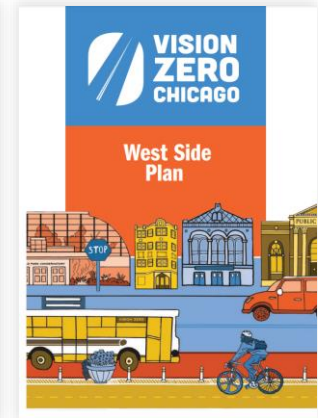
PAST AND CURRENT PLANNING EFFORTS

Key Takeaways

From a review of past and current community planning efforts, the following themes emerged which will be taking into consideration during the Ogden Avenue Corridor Improvement project.

Safety

- Prioritize efforts that focus on safety for all modes along Ogden Avenue. (NLCCC Quality of Life Plan, 2018; Vision Zero West Side Plan, 2019)
- Reconfigure the roadway to create a safer, more pedestrian and cyclist friendly corridor. Install safety treatments to alert drivers, slow down traffic, and guide pedestrians. Improve pedestrian waiting zones. Target safety improvements around public transit stations. (NLCCC Quality of Life Plan, 2018; Vision Zero West Side Plan, 2019; INVEST South/West Kick-Off Meeting, 2020)
- Examples of treatments to focus on include speed humps, pedestrian countdown timers, high visibility crosswalks, ADA ramps, refuge islands, curb extensions, and improved lighting. (NLCCC Quality of Life Plan, 2018)



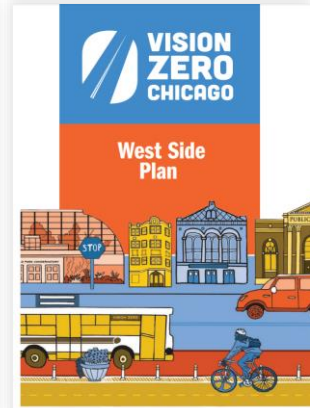
PAST AND CURRENT PLANNING EFFORTS

Key Takeaways

From a review of past and current community planning efforts, the following themes emerged which will be taking into consideration during the Ogden Avenue Corridor Improvement project.

Placemaking and Aesthetics

- Create a more pedestrian and business friendly environment and better serves the local community. **(NLCCC Quality of Life Plan, 2018; INVEST South/West Kick-Off Meeting, 2020)**
- Reclaim space for community features. Examples include wider sidewalks, outdoor seating and dining areas, landscaping, and protected bike lanes. **(NLCCC Quality of Life Plan, 2018; INVEST South/West Kick-Off Meeting, 2020)**
- Install green infrastructure in right-of-way for stormwater management, including bioswales, small native plantings, and/or permeable pavers. **(NLCCC Quality of Life Plan, 2018)**
- Create and install community branding and identifiers along Ogden, highlighting historic US Route 66. Install gateway murals. **(NLCCC Quality of Life Plan, 2018)**



ALIGNING WITH COMMUNITY PLANS

Community Planning Efforts

North Lawndale Quality of Life Plan – Comprehensive community plan completed in 2018.

- Prioritizes Ogden as a key community corridor for economic development and institutions.
- Recommends roadway improvements to better support pedestrians, cyclists and public transit.

INVEST South/West – Broad initiative to reactivate key commercial corridors on Chicago’s south and west sides.

- Leverages public funding and land resources to attract private investment in disinvested communities
- Resulted in two active mixed-use development projects on Ogden Avenue.



Key Takeaways

- New planned developments encourage a more pedestrian-friendly environment with outdoor plaza space and parking screened behind buildings.
- New development should support retail amenities that serve community needs.
- Vacant land on the corridor is currently a challenge, but also an opportunity for transformational redevelopment.

CHALLENGES AND OPPORTUNITIES

CHALLENGES & OPPORTUNITIES

Roadway Configuration

Challenges

- Highway-like feel
- Very long pedestrian crossings

Opportunities

- Reduce vehicle lanes
- Repurpose space for non-vehicular uses



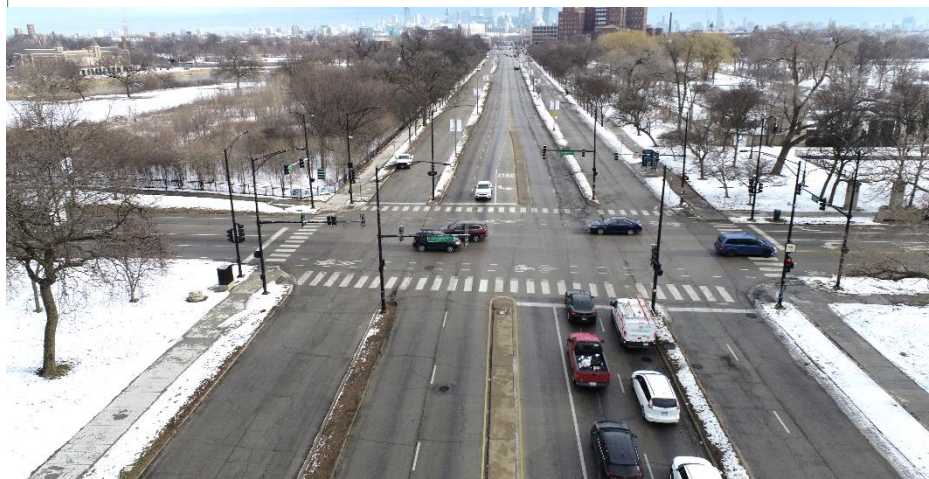
Intersections

Challenges

- Safety issues at intersections
- Service drives create delays

Opportunities

- Simplify intersections



CHALLENGES & OPPORTUNITIES

Pedestrian Experience

Challenges

- Excessive distances to cross Ogden with no refuge spaces

Opportunities

- Shorten crossing distances
- Refuge medians, curb extensions, raised crosswalks
- Wider sidewalks for more comfortable experience



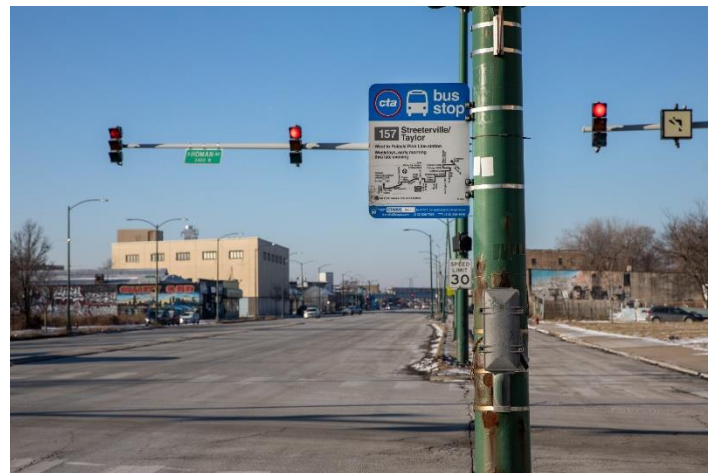
Transit Amenities

Challenges

- Bus stops located within narrow medians
- Bus stops not ADA accessible

Opportunities

- Focus safety improvements at transit stops and stations



CHALLENGES & OPPORTUNITIES

Douglass Park

Challenges

- Ogden Avenue creates a barrier for park users

Opportunities

- Safer park access across Ogden



Corridor Identity

Opportunities

- Create a cohesive corridor identity and aesthetic for the corridor
- Identifiers such as gateways and light pole banners
- Historic Route 66 has been identified by stakeholders as a potential theme





PLACEMAKING

ISW NORTH LAWNDALE
OGDEN AVENUE
Corridor Improvements

CITY OF CHICAGO
INVEST
SOUTH * WEST
MAYOR LOUI F. LIGHTFOOT

CHICAGO
WORKS
MAYOR LOUI F. LIGHTFOOT

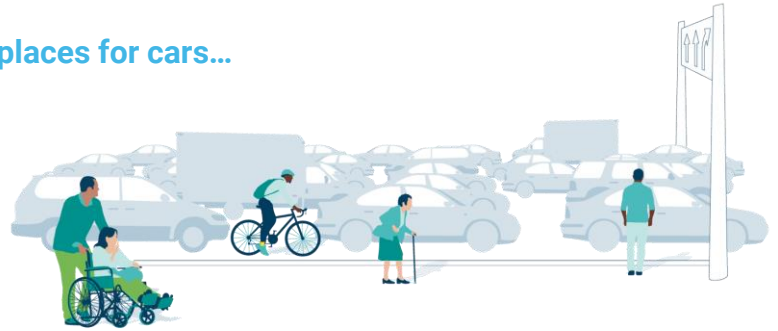


PLACEMAKING

Placemaking is the collaborative and ongoing process of creating quality places where people want to live, work, play and learn.

Transformative placemaking doesn't just beautify a place — it uses place as a stage on which communities build power.

From places for cars...



to places for people.

Investing in placemaking on Ogden Avenue can generate social, economic and environmental benefits, at the individual, neighborhood and citywide level.



MENTAL HEALTH & WELLBEING

Removing an hour from your commute produces the equivalent happiness of a 40% pay increase

– “The Stress That Doesn’t Pay: The Commuting Paradox”, Stutzer and Frey.

Neighbourhoods with stronger walkability indices are associated with decreased property crime, murders, and violent crime

– “Does walkability matter? An examination of walkability’s impact on housing values, foreclosures and crime” Gilderbloom, J. et al.

PHYSICAL ACTIVITY

90 minutes of physical activity built into your routine can be achieved through urban design alone

– “Physical activity in relation to urban environments in 14 cities worldwide: a cross-sectional study.” James F Sallis, Jens Troelsen, et al.



ENVIRONMENTAL SUSTAINABILITY

Biking is nearly 10X more carbon efficient than driving

– “What’s the carbon footprint of ... cycling a mile?” The Guardian

ECONOMIC DEVELOPMENT

Shoppers arriving on foot, visit businesses more regularly spending more per month

– “Consumer Behavior and Travel Choices: A focus on Cyclist and Pedestrians” NACTO

Placemaking on Ogden Avenue

Across the entire Avenue



Encourage active transportation



Improve the pedestrian experience



Mitigate extreme climate conditions



Celebrate local history and identity

Within specific nodes



Support local businesses



Amplify existing centers of activity



Activate underutilized spaces



Provide quality connections between mobility modes

WE WANT TO HEAR FROM YOU

We have various stations where you can provide feedback today!

Please join us in the Dining Room for activity stations and food.



Station #1 Challenges and Assets

Where do you go along Ogden Avenue? Where is it difficult to cross the street? Are there areas you avoid due to safety issues? Tell us about community assets and challenges you experience along Ogden Avenue on a map of the corridor.



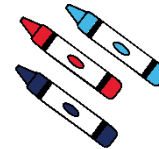
Station #3 Placemaking Elements

Review images of placemaking elements, such as lighting, trees, landscaping, community identifiers, and community gathering spaces, and tell us which you would like to see along Ogden Avenue and why.



Station #4 Public Survey

Answer questions about your connection to Ogden Avenue, your experience in the corridor today, and your vision for the future of the corridor.



Station #5 Kid's Corner

Kids can tell us about their neighborhood and learn about bike safety with drawing and coloring activities!



Station #2 Ogden Avenue Today & Vision for Ogden Avenue

What comes to mind when traveling on Ogden Avenue today, and what would you like to see in the future? Share your ideas by drawing or writing on poster boards.

We welcome feedback after the meeting!

Take the Online Public Survey:



[ImproveOgdenAve.org/
get-involved](https://ImproveOgdenAve.org/get-involved)

Email the Project Team:



info@improveogdenave.org

Fill out the Online Comment Form & Subscribe to the Project Newsletter on the Project Website:



ImproveOgdenAve.org

While comments are welcome at any time to info@improveogdenave.org, the public comment period & public survey for this public meeting are open through May 12, 2023.

THANK YOU!