

ABOUT THE PROJECT

The Environmental Art Project (EAP), presented by MAC Inc., invites primary school and homeschool students to explore local environmental issues, whilst developing their own positive message about protecting ecosystems.

The 2024 theme is Conservation and Protection of Local Waterways.

An Education Resource pack, school incursions and artist-led workshops are available to inspire a future generation of changemakers. To get started, visit:

MUNDARINGARTSCENTRE.COM.AU/EAP

Design your own colour poster to enter.

All entries are showcased in an exhibition at Midland Junction Arts Centre, from which up to 26 prizes of \$50 value will be awarded, with the school of the winning entry receiving an additional \$50 prize for the purchase of environmental education resources.

Book prizes are also awarded to students with highly commended entries.

Winning entries will be transformed into public outcomes such as street banners.



IMPORTANT DATES 2024

Entries Close: 5pm, Fri 20 September 2024

Deliver via post or in person to:

Mundaring Arts Centre

7190 Great Eastern Hwy Mundaring WA 6073

Deliver in person only:

Midland Junction Arts Centre

276 Great Eastern Hwy Midland WA 6056

Tues - Fri 10am - 5pm & Sat - Sun 11am - 3pm

Notification: Winners notified by 21 Oct 2024

Exhibition: 22 Oct - 30 Nov at Midland Junction Arts Centre for National Water Week

Virtual Exhibition: Online from 30 Oct

Shire of Mundaring Ceremony: Tues 19 Nov

City of Swan Award Ceremony: Sat 30 Nov

FOR MORE INFO

Contact Mundaring Arts Centre Inc.

08 9250 8062 | info@mundaringartscentre.com.au

MUNDARINGARTSCENTRE.COM.AU/EAP

Mundaring Arts Centre Inc. (MAC Inc.) acknowledges the First Peoples of this land and recognises their continuous connection to culture, community and Country.



MUNDARING ARTS CENTRE

Midland Junction Arts Centre

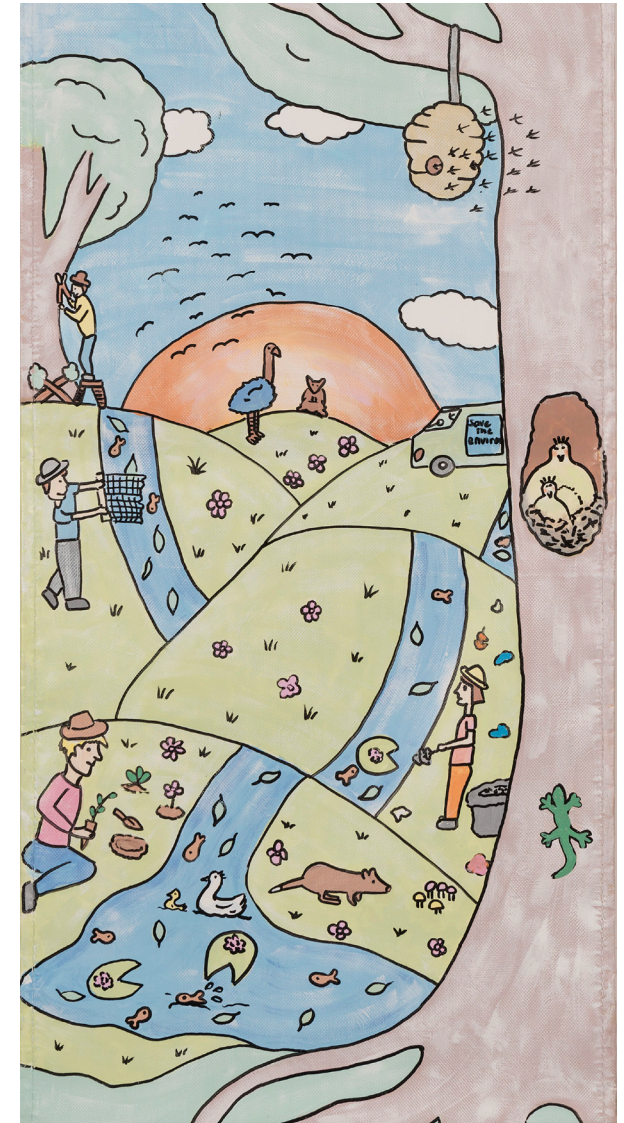
MANAGED BY MUNDARING ARTS CENTRE INC | SUPPORTED BY CITY OF SWAN



ENVIRONMENTAL ART PROJECT 2024

CONSERVATION AND PROTECTION OF LOCAL WATERWAYS

Let's protect our water future



2024 THEME

CONSERVATION AND PROTECTION OF LOCAL WATERWAYS

Living on the world's driest inhabited continent we understand that water is a precious resource. We all play a part in the protection and conservation of our local waterways. This year's project guides students to understand how these ecosystems work, how they are changing, and depict their creative solutions to reduce impact, restore and protect our water future.

AREAS OF FOCUS

Lower Primary Years 1 - 3

What makes a healthy waterway?

Students are to investigate the components of a healthy waterway. Their artwork should depict a thriving aquatic ecosystem and highlight the importance of the various elements that work together to sustain it. The artwork could include potential threats to this environment.

Upper Primary Years 4 - 6

How can we protect or improve the health of our waterways?

Students are to investigate one type of waterway - creek, wetland, river, lake, or water catchment area. They will explore the elements that maintain a healthy ecosystem and identify at least one threat to this environment. Their research and artwork should also propose ways to improve the waterway's health.

IMAGES: Cover by Sacoya Malone;
Person by Brooke Daljac; *Turtle* by Sarah Cook
Project page: *Stories of Our Waterways* by Jarnda
Councillor-Barnes, 2024



ENTRY TERMS & CONDITIONS

- Only one entry is allowed per student.
- Entries must be created on A4 paper, Portrait Only.
- Please attach the Entry Form to the blank side of the entry using tape. Do not staple.
- The competition is open to primary school students from the eastern region of Perth, however prizes will only be awarded to students who attend school or reside within the Shire of Mundaring or City of Swan.
- If a home schooler is awarded a prize, the associated school prize will be given to the home schooler Organisation within the Shire of Mundaring or City of Swan.
- Entries must be received at Mundaring Arts Centre and Midland Junction Arts Centre by 5pm, 20 Sept. No late submissions will be accepted.
- Entries will be featured in an online exhibition on Mundaring Arts Centre Inc. websites from 30 Oct.
- All artwork that meets entry conditions will be showcased at the Midland Junction Arts Centre.
- By submitting an entry, participants agree that Copyright remains with Mundaring Arts Centre Inc. Winning entries may be reproduced as banners, other public art display and products, and used for publicity and promotional purposes.
- While every effort will be made to handle the artworks with care, Mundaring Arts Centre Inc. does not assume responsibility for any damage, harm, or theft that may occur.
- Submitted entries must be the original creation of the participant(s). In the case of a joint entry by two individuals, any awarded prize money will be equally divided between them should they win.
- The decisions made by the competition judges are final, and no further discussions or correspondence will be entertained.
- Prize winners will be informed through their respective schools or the provided parent/guardian email address.

ENTRY FORM 2024

Please clearly complete this entry form

NAME

SCHOOL

YEAR LEVEL (PLEASE CIRCLE)

1 2 3 4 5 6

AGREEMENT

I have read the terms and conditions of this award and agree to abide by them.

SIGNATURE OF
TEACHER/PARENT/GUARDIAN

TEACHER/PARENT/GUARDIAN EMAIL

Once completed, attach this entry form
with tape to the back of your entry

Entries are to be portrait not landscape

