

# International contemporary jewellery triennial



Seminar program

The Finnish Jewellery Art Association  
LAB University of Applied Sciences  
The Finnish Forest Museum Lusto

# KORU8 Seminar

- small changes are possible

**Friday 7th June 2024**

**place: LAB University of Applied Sciences, Lappeenranta**

09:30-10:00 registration

10:00 Welcome words

10:10 Nora Schuurman (FI), Doctor, *Forests as multispecies homes*

10:55 Sarah Powell (UK), jewellery artist, *Lost and found - stories of place and material*

11:25 Åsa Elmstam (SE), artist, craftist, silversmith, activist, climate activist  
Forrest politics, *art and the climate crisis*

11:55 Lunch and lottery

13:25 Timo Tähkänä (FI), Doctoral student in Fine Arts, *A short greeting and introduction of themselves and their research*

13:30 Jorge Manilla (MX/BE) Artist and Head professor, KHiO, (NO), *"To the versions of me that no longer exist" a reflection on identity and definitions of what we call personal and cultural roots.*

14:00 Sanna Lindholm (SE), artist, KORU8 workshop leader, *The air vibrates the movement flows*

14:30 Katharina Dettar (UK/ES/DE), artist, Senior Lecturer at Central Saint Martins, KORU8 workshop leader, *A stone's throw*

15:00 Coffee break & exhibitions at the campus area

15:45 Jenna Purhonen (FI), fungal conservation ecologist, *Ecology of wood-inhabiting fungi, hidden beauties of the forests*

16:30 Maria Kiialainen (FI), MFA, *Fungus Stories: Between Visible and Invisible Worlds*

16:45 Terhi Tolvanen (FI/FR), artist, *Short Stories about Trees and Other*

17:15 Final words & surprise program (The seminar day 1 ends at 18:00)

**Saturday 8th June 2024**

**Place: The Finnish Forest Museum LUSTO, Punkaharju**

9:00 the bus from Lappeenranta to Lusto

11:00 arrival to Lusto

11:15 Reetta Karhunkorva (FI), research manager, *Diversity and layers of Forest Cultures and Human-Forest Relationships*

11:45 Helena Lundahl (FI), visual artist, *artist lecture*

12:00 Willemien Bruwer (ZA/BE), artist, *artist lecture*

12:30 Inni Pärnänen (FI), artist, designer, *MA Work in a plywood factory*

12:45 Manami Aoki (JP), jewellery artist, *artist lecture (pre-recorded video)*

13:00 Final words

13:10 self-guided KORU8 exhibition tour & time for lunch

16:00 The bus from Lusto to Lappeenranta

18:00 arrival to Lappeenranta

# Table of contents

## Friday 7th June 2024

Nora Schuurman	4
Sarah Powell	5
Åsa Elmstam	6
Timo Tähkänen	7
Jorge Manilla	8
Sanna Lindholm	10
Katharina Dettar	11
Jenna Purhonen	12
Maria Kiialainen	13
Terhi Tolvanen	14

## Saturday 8th June 2024

Reetta Karhunkorva	16
Helena Lundahl	17
Maria Ignacia Walker	18
Inni Pärnänen	19
Manami Aoki	20

# Nora Schuurman

doctor



## Forests as multispecies homes

In Finland, forests are a common element of the daily environment in which we live. The majority of the landscape is covered by forests and forestry a central sector of the economy, yet human–forest relations are a significant aspect of culture and everyday life. Encounters between humans and animals in forests are a part of this: wildlife such as birds are observed in the forest, others, for example snakes and insects are avoided, and small ones such as mice may enter the house. Companion animals moving in the forest with humans also respond to the presence of wildlife. It is through these everyday experiences that the forest becomes part of the lived space of the home, shared with multiple other species. The feeling of homeness is embedded in places, bodies, and routines, but also in ideas and memories about home.

### BIO:

Nora Schuurman is a cultural geographer and human–animal studies scholar working at the University of Turku. In her work she has examined relations between humans and other species, including co-living, care and death. In her current project Shared Paths: Forests as Multispecies Homes, funded by the Kone Foundation and part of their For the Woods –initiative, she focuses on experiences of forests becoming home, shared with various other species. Apart from her academic career she has also published novels. She lives in Kontiolahti, Eastern Finland, with her multispecies family.

# Sarah Powell

Jewellery artist



## Lost and found – stories of place and material

Behind the materials we use, there is a story of origin. We can trace it usually through a sequence of events that have occurred, allowing the material to exist in a given place on Earth. In another way, we can see place as a starting point to understand material and its story, cultural associations and inherent knowledge of the land it inhabits. As an artist and maker, I am interested in what is to be told when a deeper level of materiality is considered, through a connection to land and place.

### BIO:

Based in London, Sarah attended the Academy of Fine Art, Munich from 2014-2020, where she studied in the class of Jewellery and Hollowware and completed a BA in Fine Art (First) at Kingston University, London in 2009. Her work grows from a central root of place, identity and materiality in relation to the natural world. In working with found materials such as shale, flint and chalk, she forges a connection to the land that is the backbone of her practice. Through the physicality of making, both fragility and resilience are explored simultaneously in relation to the body.

Sarah's work has been selected for Schmuck 2023 and Talente 2018 in Munich. Recent exhibitions include *Campfire* at Galerie Door, Netherlands (2022) and *In tonations* (2021) at the Thames-side studios viewing room, London. Her work is held in various private collections throughout Europe.

Friday 7th June, LAB University of Applied Arts, Lappeenranta

# Åsa Elmstam

Artist, Craftist, Silversmith, Artist, Climateactivist



## Forest politics, the climate crisis and my artistic work combined with this.

### BIO:

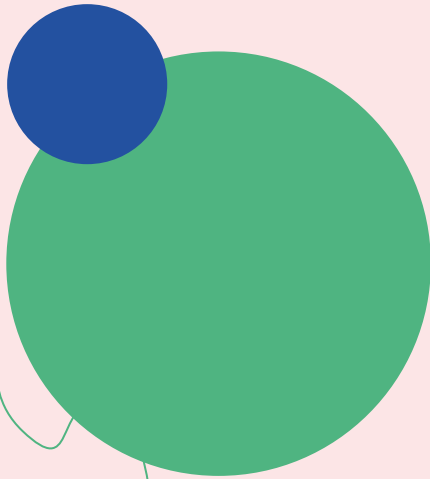
Åsa Elmstam studied in the jewellery and metal department at Konstfack Stockholm and Sustainable projects at the Zokei university Tokyo. Her background is thus a mixture of Silversmithing, jewellery art, woodwork and studies in sustainable development.

She describes that she often uses her art as a carrier of the messages she is passionate about and wants to influence the society with. Recurring themes have been overconsumption, the climate crisis and the value of craftsmanship.

Friday 7th June, LAB University of Applied Arts, Lappeenranta

# Timo Tähkänen

Doctoral student in Fine Arts



## A short greeting and introduction of themselves and their research.

### BIO:

Timo Tähkänen is a Finnish visual and performance artist, an art pedagogue and a first year doctoral student in The University of the Arts Helsinki, The Academy of Fine Arts. In their research, they ask how listening other in a queer body affects their process of making art and teaching visual arts. Their artistic research is supported by the Kone Foundation.

# Jorge Manilla



Photo: Arturo Haro

Artist and Head professor Metal and Art Jewellery subject area (Oslo National Academy of the Arts) Oslo, Norway

"To the versions of me that no longer exist" a reflection on identity and definitions of what we call personal and cultural roots.

Using as a starting point contrast between beliefs of the Aztec culture and its relationship with nature and rhizomatic thinking, personal, political and social histories, will show us how delineations, real or imagined, shape our cultures and communities.

By tracing my roots I try to understand my own contemporaneity, I will share different ways that I use to investigate my own artistic practice to define its dynamic and ever-evolving coexistence.

#### BIO:

Jorge Manilla is an artist born in Mexico City, lives and works between Oslo, Norway and Ghent Belgium.

By using materials such as wood, leather, paper, seaweed, polymer gypsum, Manilla creates monochrome organic compositions and three-dimensional structures where geometry





and the organic aspects interact in a contrasting way.

Evoking what could be a mystical past, an architectural decay of urban landscapes or very intimate and personal representations of how the artist imagine human bodies affected by emotional states, His work expresses abstract and enigmatic narratives where the physical, mystical and the emotional are depicted in generally disturbing pieces.

Manilla creates objects / jewellery that seem to be collected from a past with a deep history or, on the contrary, post-apocalyptic objects that seem to us to think of a future in decline where the rational and emotional of the human being is in constant struggle.

After obtaining his Master's Degree in 2006 at St Lucas University College of Art and Design in Antwerp Belgium, Manilla continued working as a freelance artist and as art educator at different institutions in Europe.

Parallel to his artistic and educational practice in Europe, Manilla is also active in Central and South America, like Brazil, Chile, Argentina and Mexico as tutor and management of jewellery projects.

Jorge Manilla also has taught at different institutions in Belgium, Brussels, St Niklass and at the Royal Academy of Fine Arts in Antwerp, He also started doctoral research under the name "Other bodies- fragments are not just small parts».

In 2017, Manilla obtained the position as Head Professor of the subject area Metal and art jewellery at the Oslo National Academy of the Arts, Norway, a position that he continues to hold full time until today.

Manilla is constantly active as a visiting professor at different official institutions as well as private independent organizations, as a critic and tutor of art programs, giving workshops on creative, technical, and conceptual processes.

Manilla's work has been acquired by various museums and collections and private foundations all around the world.

# Sanna Lindholm

Artist



## The air vibrates the movement flows

In the lecture Lindholm will describe her artistic process and background. Also she will give introductions to selected works as well as her relationship with wood and lath.

### BIO:

Sanna Lindholm works with sculpture in wood, often with the woodturner as a sculpting tool in combination with hand tools and traditional techniques. The rotation in nature, the production in the lathe and the wood's cyclic energy have in her work strong ties to each other. There, thoughts and ideas about transformation, movement and transiency are central.

Wood as a material has a significant role in her practice partly based on its physical properties and possibilities where she feels great freedom. As well as being a material that carries the story of time stored within itself, a story that reveals conditions and changes over the course of time in its growth and through its physical structure links forms and motifs in a cyclical flow of energy. There, is not only the idea of progress and a forward motion present, but also the link backwards and a reminder of the perishable, impermanent and vulnerable.

# Katharina Dettar



Photo: James Rippingale

Artist, Senior Lecturer at Central Saint Martins, London, United Kingdom

## a stone's throw

The origin of materials is not always within close proximity to the workshops using them for manufacturing, or their final place destination. Globalisation refers to the process by which advancements in trade and technology have made the world more connected and interdependent. In this lecture we will look into the stories of stones that have been transported across the world through the ages and have become artefacts in museums.

### BIO:

Born in Fürth, raised in Catalonia, living in London.

Her practice explores the notions of jewellery and object through materials. Having an interest and awareness in the origin of these, part of her outcomes investigates themes such as waste, sustainability, and nature.

Her work has been exhibited in museums and galleries in Europe, North America and Asia. Her pieces are part of public collections in Museum Arnhem, CODA Museum Apeldoorn, Muzeum Cesueho Raje Turnov, the International Collection of Contemporary Jewellery Legnica, International Collection Hochschule Idar-Oberstein, and the Royal College of Art Collection in London.

Katharina holds an MA from the Royal College of Art, and previously studied in Idar-Oberstein, Lappeenranta and Barcelona. The Studienstiftung des deutschen Volkes supported her throughout her studies in Germany and UK. Winner of the Talente Prize in Munich and the Förderpreis des Landes Rheinland-Pfalz in 2010.

Currently a senior lecturer at Central Saint Martins and Visiting Lecturer at the University of Herfordshire, Guest Lecturer at the Royal College of Art since 2020. Katharina worked as a gallery manager at Gallery S O London from 2018 to its closure in 2021.

# Jenna Purhonen

Fungal conservation ecologist



Photo: Sonja Saine

## Ecology of wood-inhabiting fungi, hidden beauties of the forests

Wood-inhabiting fungi are a crucial for boreal forest ecosystem functioning, for example in carbon cycling. Many species are severely affected and threatened by human actions like commercial timber harvesting, but for large number of species their identity and ecology remain still very poorly known. In my talk, I will first introduce the diversity and different roles of wood-inhabiting fungal species in boreal forests. I will also explain why so many of these species are threatened. Then I will present how to study the most poorly known fungal groups with examples of species, that have not been found before from Finland or that are new to science, the hidden beauties of the forest.

### BIO:

I study fungal community ecology and conservation biology, especially of poorly known fungal groups. In my current project, I investigate and develop long term monitoring of deadwood organisms, including fungi, bryophytes, insects, and lichens.

# Maria Kiialainen

MFA



## Fungus Stories: Between Visible and Invisible Worlds

Explore the captivating kingdom of fungi with Maria Kiialainen. In this seminar, we will examine their ecological significance, evolutionary history, and symbiotic relationships with other organisms. From the majestic mushrooms sprouting from forest floors to the microscopic mycelium weaving through soil, fungi embody a remarkable diversity of forms and functions. Maria will enrich our exploration by showcasing her artistic work, providing vivid examples that illuminate the beauty and complexity of these enigmatic organisms.

### BIO:

Maria Kiialainen was born in Helsinki 1989, currently living and working Helsinki, Finland. She graduated as Master of arts from Burg Giebichenstein University of Art and Design. With her graduation work she has won the Saale Sparkasse art award. Maria has been actively taking part in exhibitions worldwide and has been selected as finalist to Talente and BKV-Prize for Young Applied Arts Awards. Her work has been widely exhibited in international exhibitions and competitions and found in the Finnish national art collection.

Her creations are wearable sculptures that exist in symbiosis with the wearer's body, and in exhibition spaces, they become part of larger installations. The microcosm, the invisible world of organisms and their networks that are not visible to the naked eye, captivates with its diversity. Through her jewelry, Maria delves into the microcosm's ecosystem through narrative personification. She explores the effects of living organisms and biological processes in her work, aiming to better understand nature and our connection to it.

# Terhi Tolvanen



## Short Stories about Trees and Other

When I left Finland 30 years ago to study in Amsterdam, I didn't know I would stay living abroad for so long time. The confrontation with mentality differences was immediate. It totally changed my perception of one's living space. The obvious of nature's presence was very different. These experiences have led to a jewelry artist career long fascination about the dialogue between nature and human.

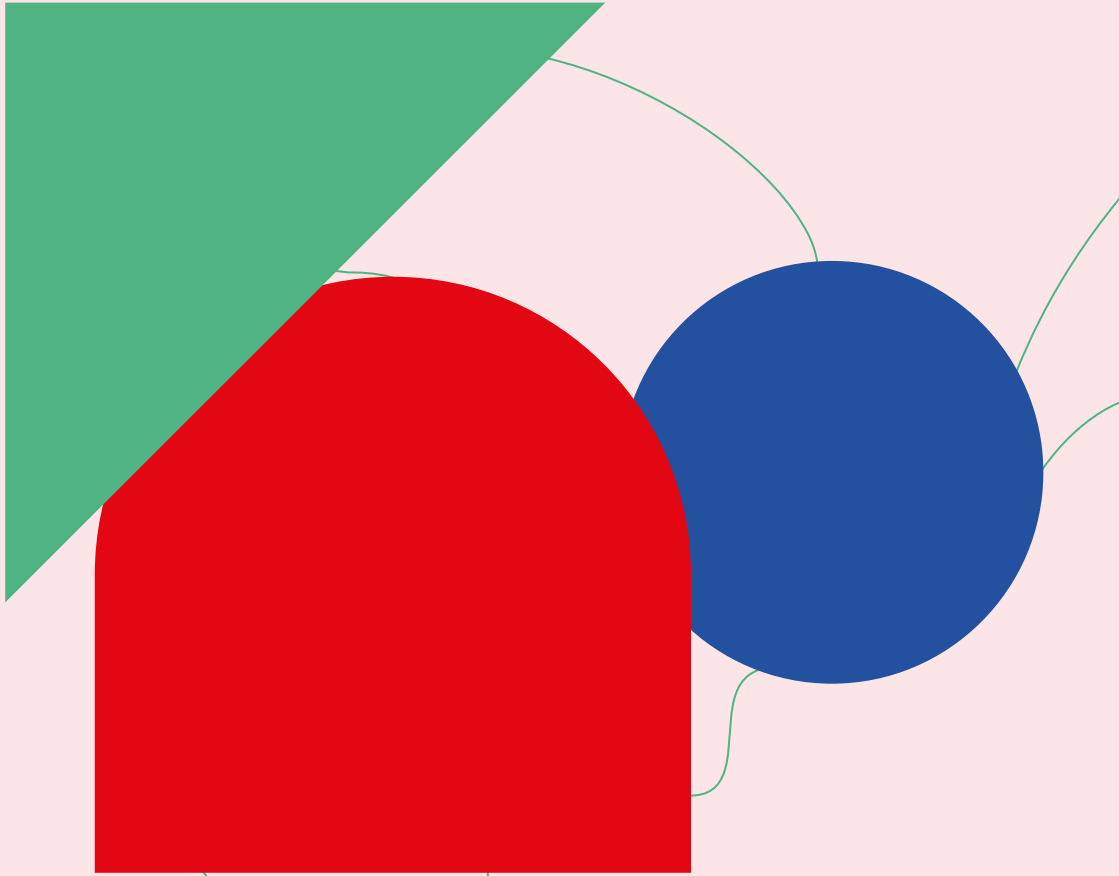
I take you for a walk. Let's go shopping on a small country road!

### BIO:

Terhi Tolvanen specializes in sculptural jewelry where nature is continuously reinvented. Her work deals with situations where natural and man-made, and control and freedom are in connected dialogue.

She lives and works in Haims, France. Since 2017 Terhi is also teaching in ENSAD, the École National Supérieur d'Art et Design in Limoges, France.

She originates from Finland where she was born in Helsinki in 1968. After her silversmithing studies at the Design Institute in Lanti, Finland she continued her education at the Gerrit Rietveld Academy in Amsterdam, NL. In 1997 she was invited to study at the Sandberg Institute, Amsterdam, NL for her Master of Arts degree, which she obtained in 1999. She was nominated for the Gerrit Rietveld Academy Award in 1997 and in 2007 she received



a Highly Commended from the Dutch Design Awards in the category Fashion & Free Design.

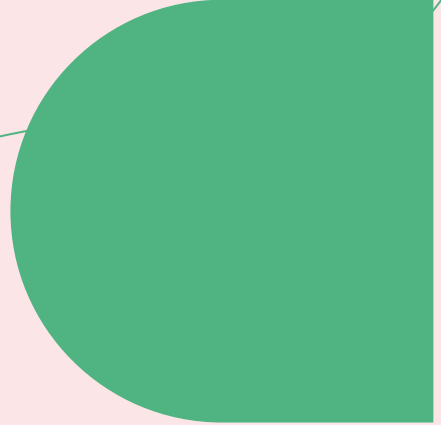
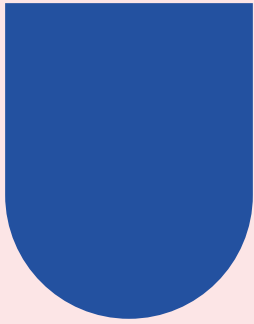
Since her graduation Terhi is exhibiting her work in many solo- and group exhibitions internationally. Her jewelry is in many important collections around the world such as the Schmuck Museum in Pforzheim in Germany, Victoria&Albert Museum in London, UK, Stichting Françoise van den Bosch, Stedelijk Museum Amsterdam and Coda Museum in Apeldoorn, both in the Netherlands. The latest museum acquisitions are the Dallas Museum of Art in Texas and the Musée Les Arts Decoratifs in Paris, France.

# Reetta Karhunkorva

Research Manager



Photo: Sari Kotivirta, Lusto



## Diversity and layers of Forest Cultures and Human-Forest Relationships

### BIO:

Reetta Karhunkorva (M.A.) works as Senior Forest Culture Specialist at The Finnish Forest Museum Lusto, a national museum focusing on forest culture. She is preparing her PhD thesis on private forest owners' relationships with the forests at the University of Eastern Finland. Karhunkorva has long experience as a museum professional, and has worked on museum collections, exhibitions, expert work, living heritage and museum concept development





Saturday 8th June, The Finnish Forest Museum LUSTO, Punkaharju

# Helena Lundahl

Visual artist



## Artist talk

Helena Lundahl will be talking about the backstory of her work "Metsänpeitto" which can be seen in the Koru8 triennial.

### BIO:

Helena Lundahl is a visual artist working with ceramics, metal and text.

She's intrigued by the concept of secrets and their connection to power, present in various social contexts such as beliefs, superstition and religions. Through her art she's exploring power and control strengthened by rituals, traditions, unspoken rules and inclusion and exclusion. Her interest in these topics rises from the intersection of religion and mythologies. She's fascinated by the close proximities of religion and superstition and how old beliefs and habits exist and take new forms in our contemporary society.

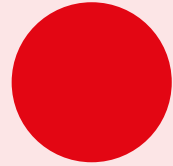
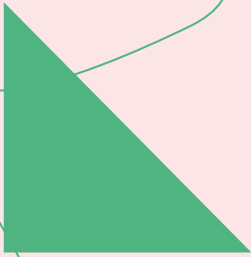
The artistic process plays a significant role in her work. The work moves forward from the twilight of uncertainty and is guided to its final form through the subconscious, writing, drawing and visual cues. Characters are born and strengthened when working with them.

She holds a BA from jewellery design and she is currently doing her masters at Aalto University in Contemporary Design program during which she participated in an exchange program at HDK-Valand in the Jewellery Art master's program in Gothenburg. She is a board member in the Finnish Jewelry Art Association.

Saturday 8th June, The Finnish Forest Museum LUSTO, Punkaharju

# Willemien Bruwer

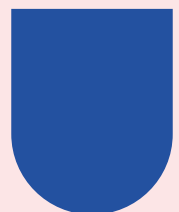
Artist



## Artist lecture

coming soon

BIO:  
coming soon



# Inni Pärnänen



Visual artist

## Work in a plywood factory

Last year I started to work in a plywood factory. I go there around once a week in seek of new directions in my artistic work. The factory owner provided me a room for my project. The building is old and noisy and during the winter it has also been cold inside. Mostly I wonder what kind of routes I am following.

### BIO:

Inni Pärnänen is a Finnish designer and artist. She is primarily known in the field of jewellery but in recent years her production has expanded to other areas of design and art. A demand for an increase in scale in her production for example, has placed her work in the arena of public art.

Her process begins with an interest in a material or a technique. It is characteristic for her to create three dimensional constructions through the use of simple geometric principles. She has explored repeatedly stacking and attaching elements, as well as worked with the flexibility of materials, she has also experimented with the functionality and durability of honeycomb and saddle-shaped forms. She is guided in her work by perceptions of correspondence in human-built structures and natural forms and the thinking processes which these perceptions set in motion.

Saturday 8th June, The Finnish Forest Museum LUSTO, Punkaharju

# Manami Aoki

Visual artist



## Artist lecture

Introducing works created by processing wood into fibers using unique technique.

### BIO:

Manami Aoki, born in 1995. Studied contemporary jewellery in Tokyo. Creating works using an iconic technique that processes wood into fibers. Currently working as artist, presenting works primarily in Japan and Europe.